

Data Path : Z:\voasrv\HPCHEM1\MSVOA_X\Data\VX060421\
 Data File : VX022430.D
 Acq On : 04 Jun 2021 22:30
 Operator : JC/MD
 Sample : VX0604WBL02
 Misc : 5.0mL/MSVOA_X/WATER
 ALS Vial : 25 Sample Multiplier: 1

Instrument :
 MSVOA_X
 ClientSampleId :
 VX0604WBL02

Integration Parameters: RTEINT.P
 Integrator: RTE
 Smoothing : ON Filtering: 5
 Sampling : 1 Min Area: 3 % of largest Peak
 Start Thrs: 0.2 Max Peaks: 100
 Stop Thrs : 0 Peak Location: TOP

If leading or trailing edge < 100 prefer < Baseline drop else tangent >
 Peak separation: 5

Method : Z:\voasrv\HPCHEM1\MSVOA_X\Method\82X051921W.M
 Title : SW846 8260

Signal : TIC: VX022430.D\data.ms

peak #	R.T. min	first scan	max scan	last scan	PK TY	peak height	corr. area	corr. % max.	% of total
1	1.569	71	79	81	rBV6	2881	5795	1.27%	0.251%
2	5.397	696	707	723	rVB2	47776	138222	30.36%	5.980%
3	5.562	723	734	750	rBV	75351	214997	47.23%	9.302%
4	5.964	789	800	812	rBV2	60469	160351	35.23%	6.938%
5	6.769	921	932	945	rBV2	138703	328145	72.09%	14.198%
6	8.653	1234	1241	1253	rBV	301109	455210	100.00%	19.696%
7	10.055	1466	1471	1485	rVB	279044	380075	83.49%	16.445%
8	11.085	1634	1640	1652	rVB	210779	267938	58.86%	11.593%
9	12.024	1788	1794	1801	rBV	266591	325494	71.50%	14.083%
10	13.268	1994	1998	2006	rVB2	7501	10262	2.25%	0.444%
11	13.841	2088	2092	2097	rBV3	3297	5787	1.27%	0.250%
12	14.042	2120	2125	2128	rBV	10937	11927	2.62%	0.516%
13	14.761	2239	2243	2246	rBV2	6338	7029	1.54%	0.304%

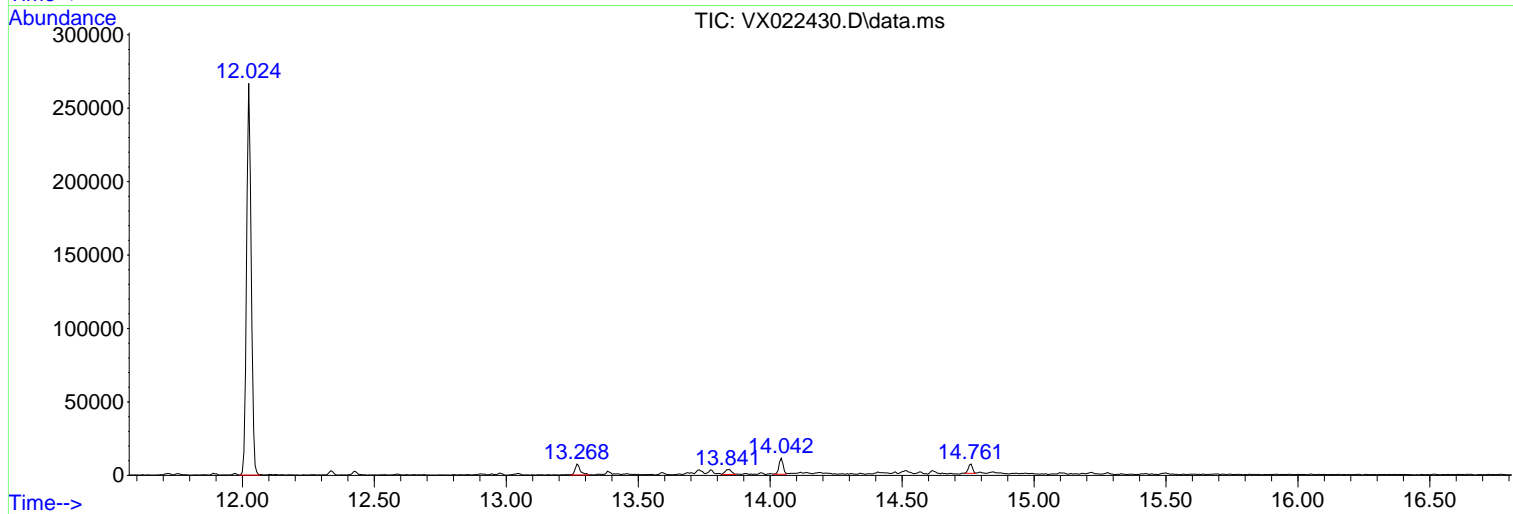
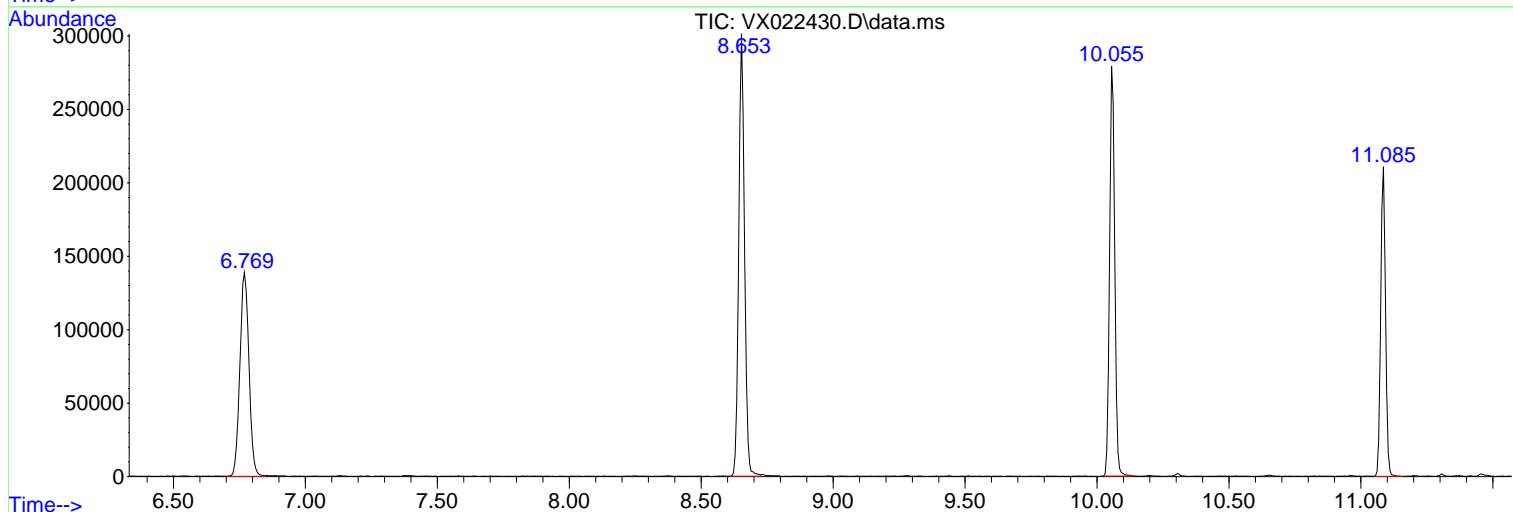
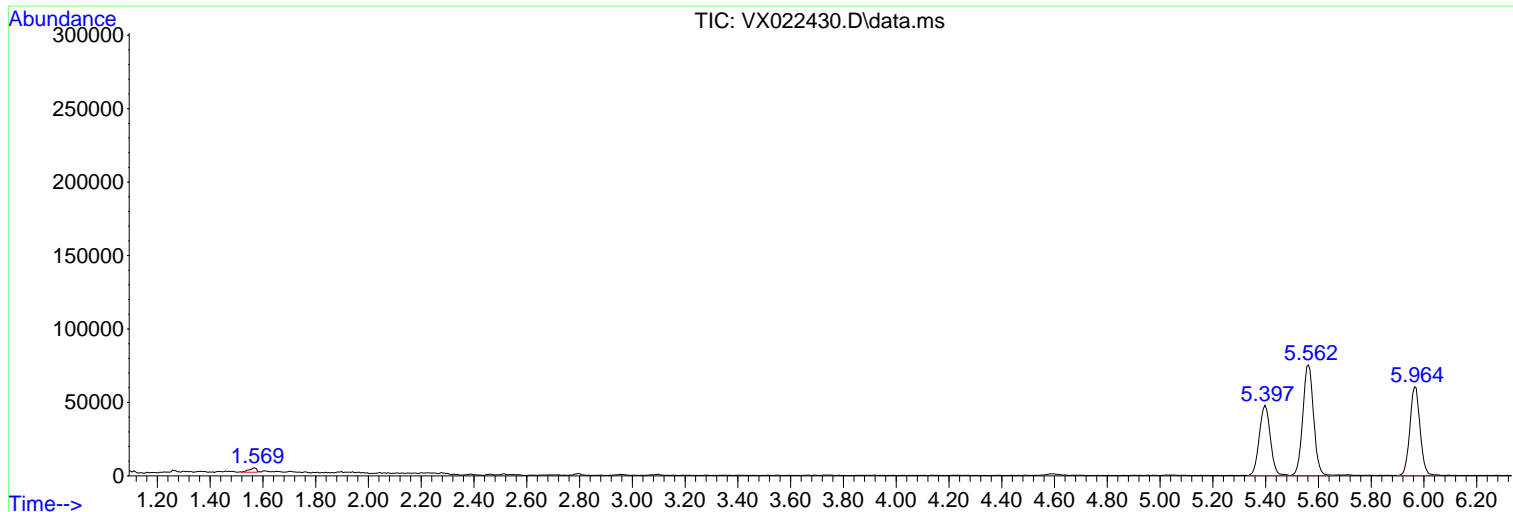
Sum of corrected areas: 2311232

Data Path : Z:\voasrv\HPCHEM1\MSVOA_X\Data\VX060421\
 Data File : VX022430.D
 Acq On : 04 Jun 2021 22:30
 Operator : JC/MD
 Sample : VX0604WBL02
 Misc : 5.0mL/MSVOA_X/WATER
 ALS Vial : 25 Sample Multiplier: 1

Instrument :
 MSVOA_X
 ClientSampleId :
 VX0604WBL02

Quant Method : Z:\voasrv\HPCHEM1\MSVOA_X\Method\82X051921W.M
 Quant Title : SW846 8260

TIC Library : C:\DATABASE\NIST11.L
 TIC Integration Parameters: LSCINT.P



Library Search Compound Report

Data Path : Z:\voasrv\HPCHEM1\MSVOA_X\Data\VX060421\
Data File : VX022430.D
Acq On : 04 Jun 2021 22:30
Operator : JC/MD
Sample : VX0604WBL02
Misc : 5.0mL/MSVOA_X/WATER
ALS Vial : 25 Sample Multiplier: 1

Instrument :
MSVOA_X
ClientSampleId :
VX0604WBL02

Quant Method : Z:\voasrv\HPCHEM1\MSVOA_X\Method\82X051921W.M
Quant Title : SW846 8260

TIC Library : C:\DATABASE\NIST11.L
TIC Integration Parameters: LSCINT.P

No Library Search Compounds Detected

Data Path : Z:\voasrv\HPCHEM1\MSVOA_X\Data\VX060421\
Data File : VX022430.D
Acq On : 04 Jun 2021 22:30
Operator : JC/MD
Sample : VX0604WBL02
Misc : 5.0mL/MSVOA_X/WATER
ALS Vial : 25 Sample Multiplier: 1

Instrument :
MSVOA_X
ClientSampleId :
VX0604WBL02

Quant Method : Z:\voasrv\HPCHEM1\MSVOA_X\Method\82X051921W.M
Quant Title : SW846 8260

TIC Library : C:\DATABASE\NIST11.L
TIC Integration Parameters: LSCINT.P

TIC Top Hit name	RT	EstConc	Units	Response	--Internal Standard--		
					#	RT	Resp Conc
