

Data Path : Z:\voasrv\HPCHEM1\MSVOA\_X\Data\VX060524\  
 Data File : VX041752.D  
 Acq On : 05 Jun 2024 16:02  
 Operator : JC/MD  
 Sample : P2718-01  
 Misc : 5.0mL/MSVOA\_X/WATER  
 ALS Vial : 18 Sample Multiplier: 1

Instrument :  
 MSVOA\_X  
 ClientSampleId :

Quant Time: Jun 06 02:21:33 2024  
 Quant Method : Z:\voasrv\HPCHEM1\MSVOA\_X\Method\82X052924W.M  
 Quant Title : SW846 8260  
 QLast Update : Thu May 30 07:36:24 2024  
 Response via : Initial Calibration

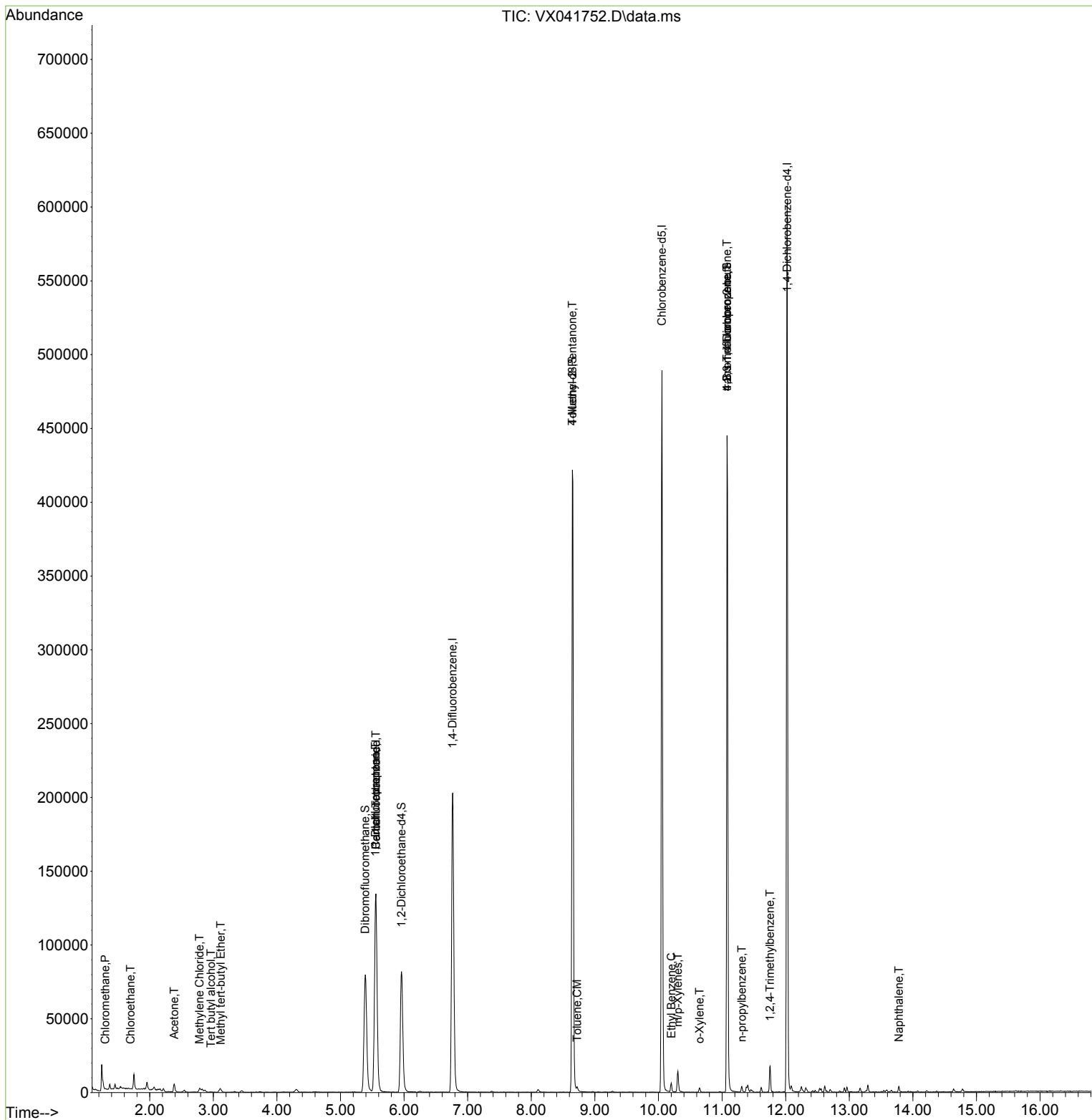
Compound	R.T.	QIon	Response	Conc	Units	Dev(Min)
-----						
Internal Standards						
1) Pentafluorobenzene	5.556	168	140547	50.000	ug/l	# 0.00
34) 1,4-Difluorobenzene	6.763	114	217582	50.000	ug/l	0.00
63) Chlorobenzene-d5	10.055	117	229947	50.000	ug/l	0.00
72) 1,4-Dichlorobenzene-d4	12.024	152	133643	50.000	ug/l	0.00
System Monitoring Compounds						
33) 1,2-Dichloroethane-d4	5.958	65	82760	48.011	ug/l	0.00
Spiked Amount	50.000	Range	78 - 117	Recovery	=	96.020%
35) Dibromofluoromethane	5.385	113	69861	46.439	ug/l	0.00
Spiked Amount	50.000	Range	75 - 124	Recovery	=	92.880%
50) Toluene-d8	8.646	98	258936	49.261	ug/l	0.00
Spiked Amount	50.000	Range	92 - 112	Recovery	=	98.520%
62) 4-Bromofluorobenzene	11.079	95	110578	56.998	ug/l	0.00
Spiked Amount	50.000	Range	83 - 123	Recovery	=	114.000%
Target Compounds						
						Qvalue
3) Chloromethane	1.300	50	299	0.222	ug/l	94
6) Chloroethane	1.696	64	455	0.543	ug/l	# 43
11) Tert butyl alcohol	2.965	59	308	1.010	ug/l	# 78
16) Acetone	2.385	43	6181	5.478	ug/l	97
19) Methyl tert-butyl Ether	3.117	73	1064	0.254	ug/l	# 1
20) Methylene Chloride	2.782	84	772	0.500	ug/l	# 81
36) 1,1-Dichloropropene	5.549	75	9156	5.027	ug/l	# 51
38) Carbon Tetrachloride	5.556	117	11977	5.787	ug/l	# 14
51) 4-Methyl-2-Pentanone	8.646	43	1200	0.533	ug/l	# 1
52) Toluene	8.720	92	1053	0.291	ug/l	96
67) Ethyl Benzene	10.201	91	4169	0.530	ug/l	100
68) m/p-Xylenes	10.305	106	3719	1.189	ug/l	97
69) o-Xylene	10.646	106	781	0.251	ug/l	89
76) 1,2,3-Trichloropropane	11.079	75	57194	24.528	ug/l	# 39
78) n-propylbenzene	11.311	91	2993	0.329	ug/l	93
81) trans-1,4-Dichloro-2-b...	11.079	75	57194	66.851	ug/l	# 5
84) 1,2,4-Trimethylbenzene	11.756	105	8614	1.228	ug/l	95
95) Naphthalene	13.780	128	3260	0.377	ug/l	95
-----						

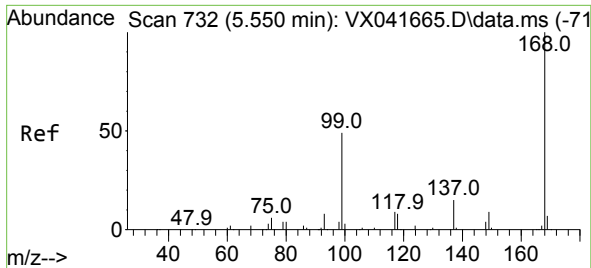
(#) = qualifier out of range (m) = manual integration (+) = signals summed

Data Path : Z:\voasrv\HPCHEM1\MSVOA\_X\Data\VX060524\  
 Data File : VX041752.D  
 Acq On : 05 Jun 2024 16:02  
 Operator : JC/MD  
 Sample : P2718-01  
 Misc : 5.0mL/MSVOA\_X/WATER  
 ALS Vial : 18 Sample Multiplier: 1

Instrument :  
 MSVOA\_X  
 ClientSampleId :

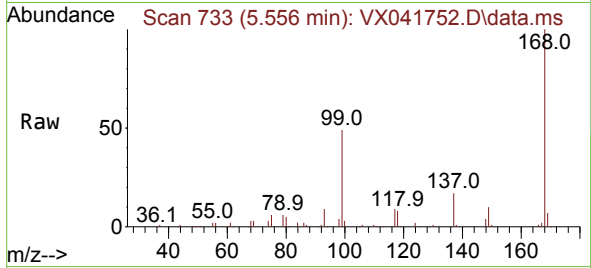
Quant Time: Jun 06 02:21:33 2024  
 Quant Method : Z:\voasrv\HPCHEM1\MSVOA\_X\Method\82X052924W.M  
 Quant Title : SW846 8260  
 QLast Update : Thu May 30 07:36:24 2024  
 Response via : Initial Calibration



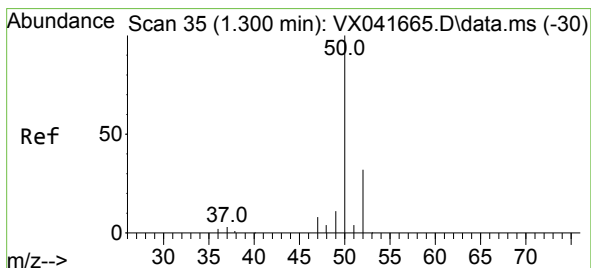
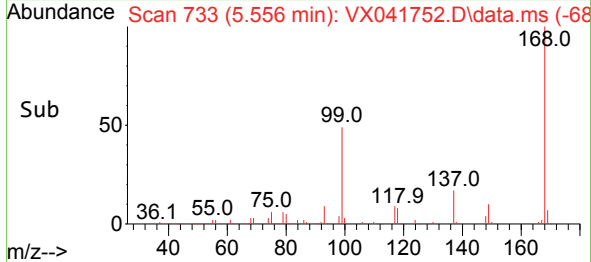
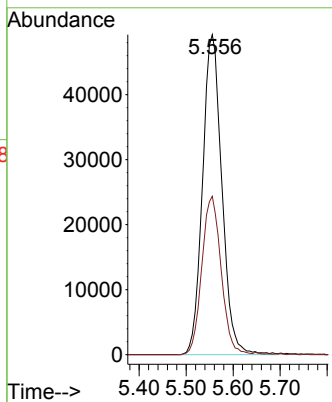


#1  
 Pentafluorobenzene  
 Concen: 50.000 ug/l  
 RT: 5.556 min Scan# 71  
 Delta R.T. 0.006 min  
 Lab File: VX041752.D  
 Acq: 05 Jun 2024 16:02

Instrument :  
 MSVOA\_X  
 ClientSampleId :

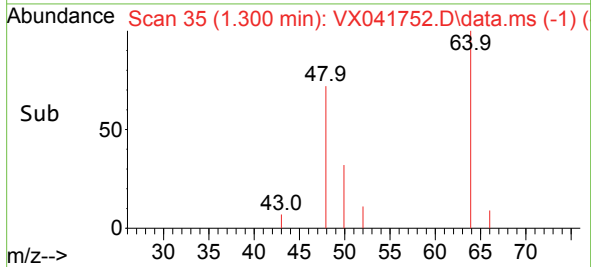
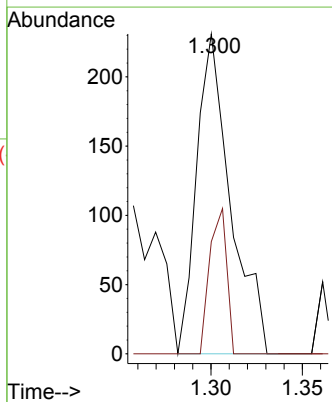
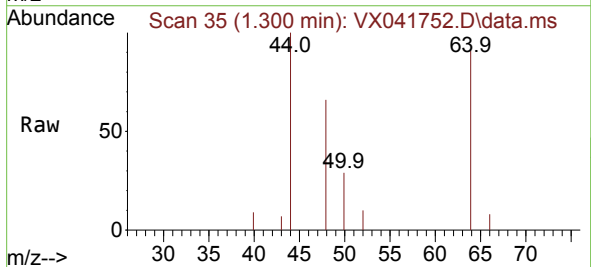


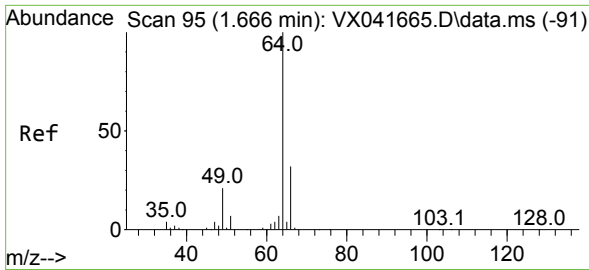
Tgt Ion:168 Resp: 140547  
 Ion Ratio Lower Upper  
 168 100  
 99 49.5 56.6 85.0#



#3  
 Chloromethane  
 Concen: 0.222 ug/l  
 RT: 1.300 min Scan# 35  
 Delta R.T. -0.000 min  
 Lab File: VX041752.D  
 Acq: 05 Jun 2024 16:02

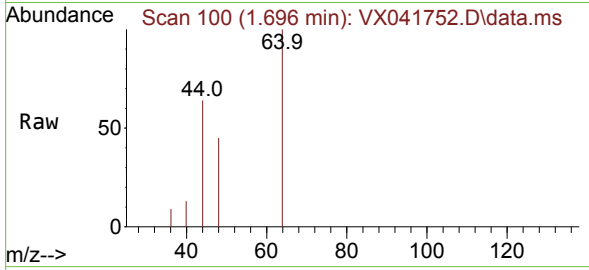
Tgt Ion: 50 Resp: 299  
 Ion Ratio Lower Upper  
 50 100  
 52 35.1 25.5 38.3



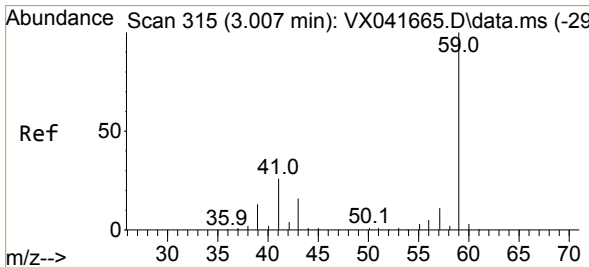
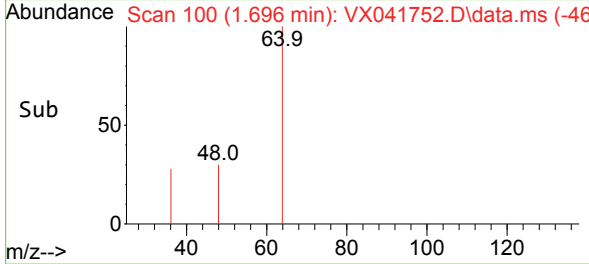
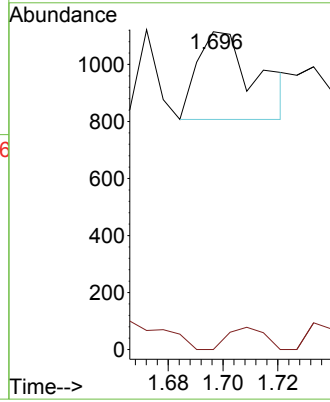


#6  
 Chloroethane  
 Concen: 0.543 ug/l  
 RT: 1.696 min Scan# 10  
 Delta R.T. 0.030 min  
 Lab File: VX041752.D  
 Acq: 05 Jun 2024 16:02

Instrument :  
 MSVOA\_X  
 ClientSampleId :

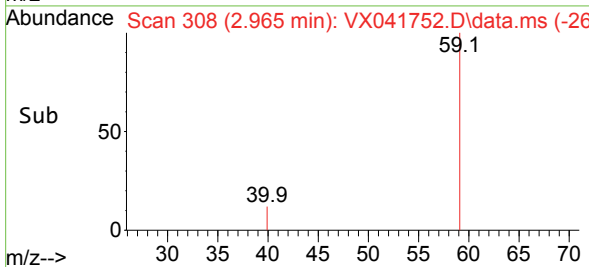
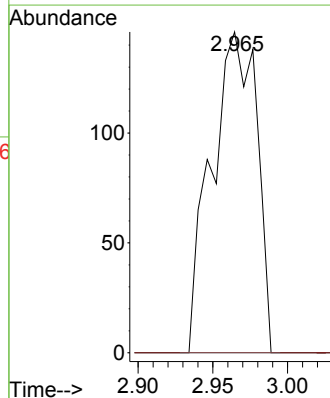
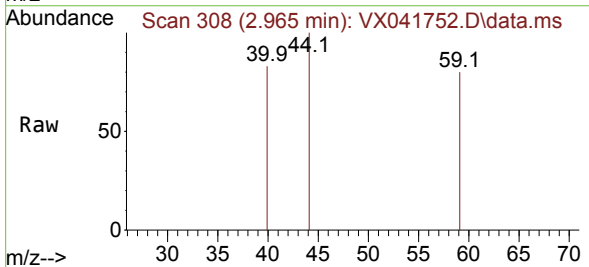


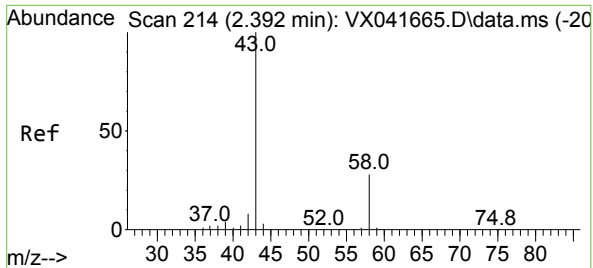
Tgt Ion: 64 Resp: 455  
 Ion Ratio Lower Upper  
 64 100  
 66 0.0 25.1 37.7#



#11  
 Tert butyl alcohol  
 Concen: 1.010 ug/l  
 RT: 2.965 min Scan# 308  
 Delta R.T. -0.043 min  
 Lab File: VX041752.D  
 Acq: 05 Jun 2024 16:02

Tgt Ion: 59 Resp: 308  
 Ion Ratio Lower Upper  
 59 100  
 57 0.0 6.0 9.0#



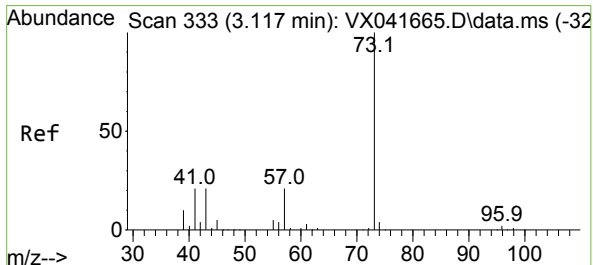
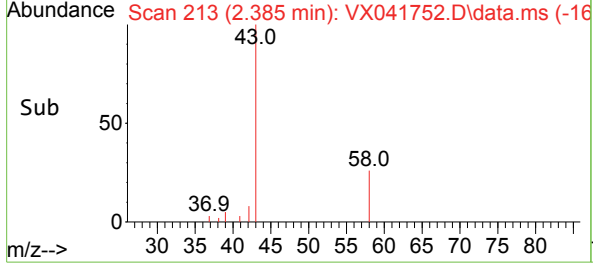
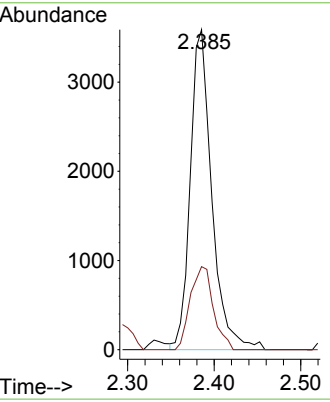
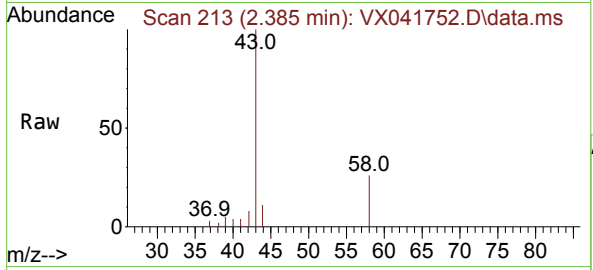


#16  
 Acetone  
 Concen: 5.478 ug/l  
 RT: 2.385 min Scan# 214  
 Delta R.T. -0.007 min  
 Lab File: VX041752.D  
 Acq: 05 Jun 2024 16:02

Instrument : MSVOA\_X  
 ClientSampleId :

Tgt Ion: 43 Resp: 6181

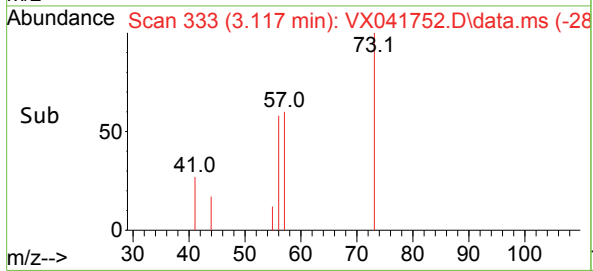
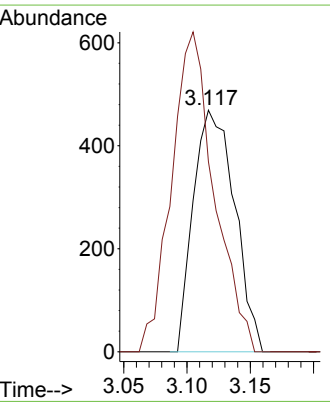
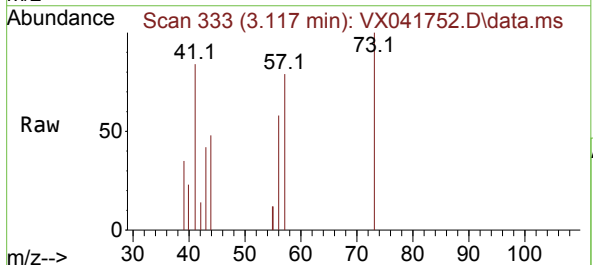
Ion	Ratio	Lower	Upper
43	100		
58	26.0	21.9	32.9

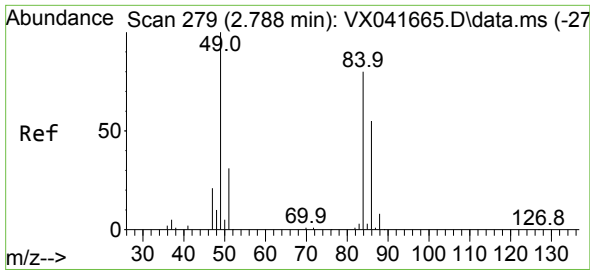


#19  
 Methyl tert-butyl Ether  
 Concen: 0.254 ug/l  
 RT: 3.117 min Scan# 333  
 Delta R.T. -0.000 min  
 Lab File: VX041752.D  
 Acq: 05 Jun 2024 16:02

Tgt Ion: 73 Resp: 1064

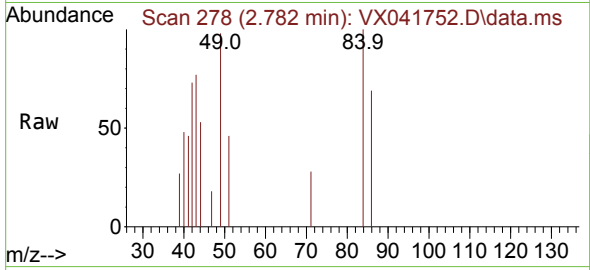
Ion	Ratio	Lower	Upper
73	100		
57	78.7	17.3	25.9#





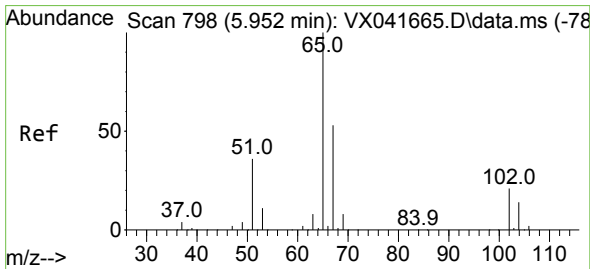
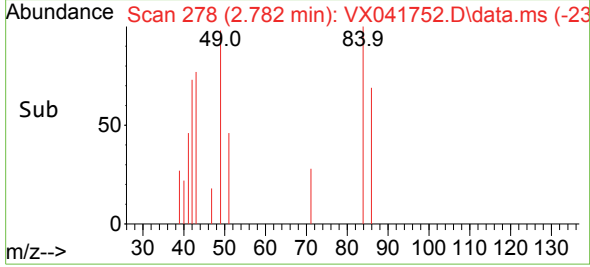
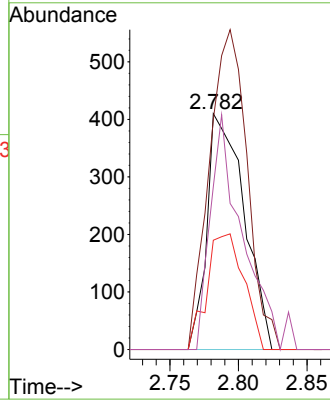
#20  
 Methylene Chloride  
 Concen: 0.500 ug/l  
 RT: 2.782 min Scan# 21  
 Delta R.T. -0.006 min  
 Lab File: VX041752.D  
 Acq: 05 Jun 2024 16:02

Instrument :  
 MSVOA\_X  
 ClientSampleId :



Tgt Ion: 84 Resp: 772

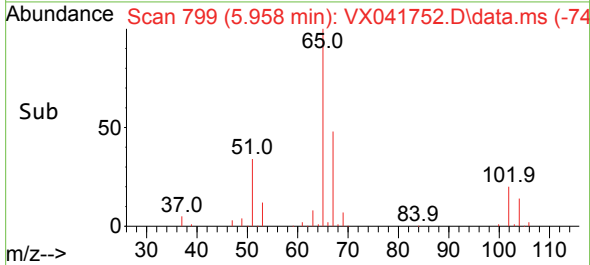
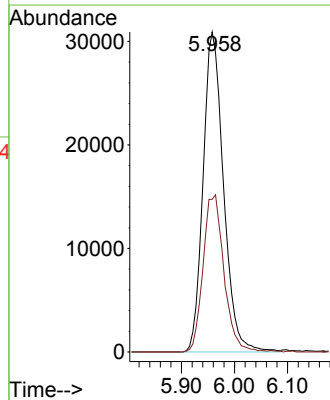
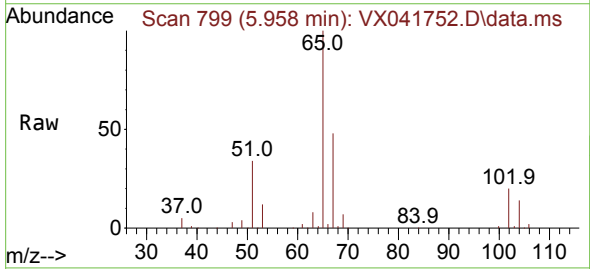
Ion	Ratio	Lower	Upper
84	100		
49	97.6	103.6	155.4#
51	46.3	33.8	50.6
86	69.0	49.4	74.0

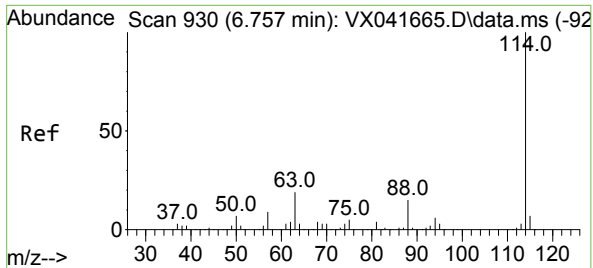


#33  
 1,2-Dichloroethane-d4  
 Concen: 48.011 ug/l  
 RT: 5.958 min Scan# 799  
 Delta R.T. 0.006 min  
 Lab File: VX041752.D  
 Acq: 05 Jun 2024 16:02

Tgt Ion: 65 Resp: 82760

Ion	Ratio	Lower	Upper
65	100		
67	50.1	0.0	100.2



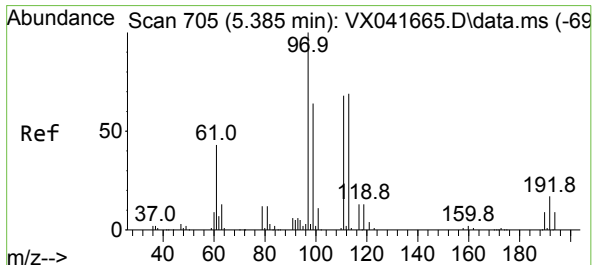
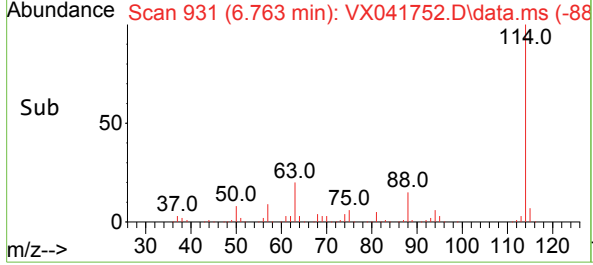
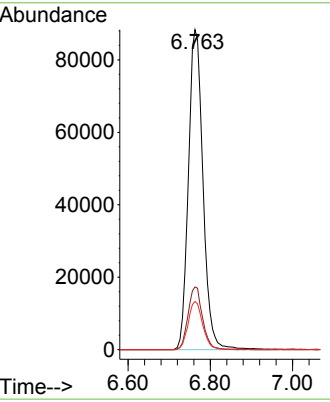
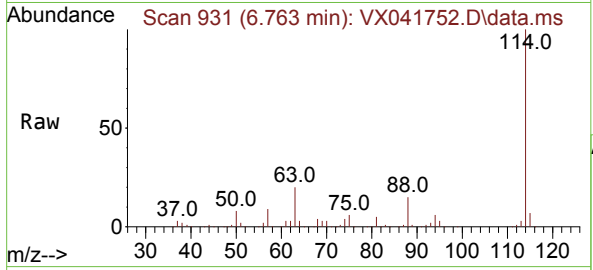


#34  
 1,4-Difluorobenzene  
 Concen: 50.000 ug/l  
 RT: 6.763 min Scan# 911  
 Delta R.T. 0.006 min  
 Lab File: VX041752.D  
 Acq: 05 Jun 2024 16:02

Instrument : MSVOA\_X  
 ClientSampleId :

Tgt Ion:114 Resp: 217582

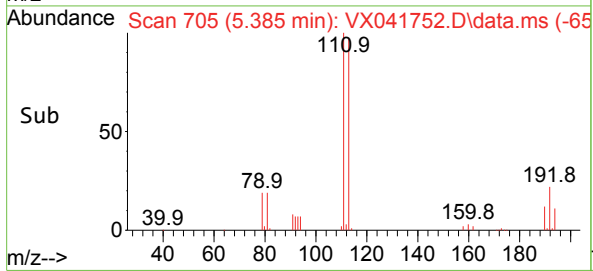
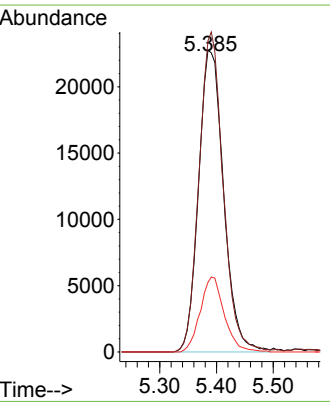
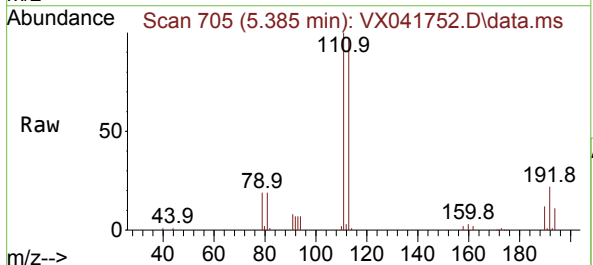
Ion	Ratio	Lower	Upper
114	100		
63	19.6	0.0	45.0
88	15.1	0.0	36.6

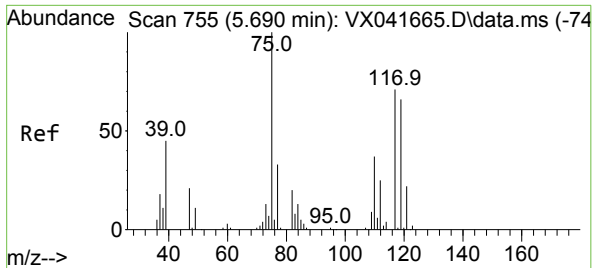


#35  
 Dibromofluoromethane  
 Concen: 46.439 ug/l  
 RT: 5.385 min Scan# 705  
 Delta R.T. -0.000 min  
 Lab File: VX041752.D  
 Acq: 05 Jun 2024 16:02

Tgt Ion:113 Resp: 69861

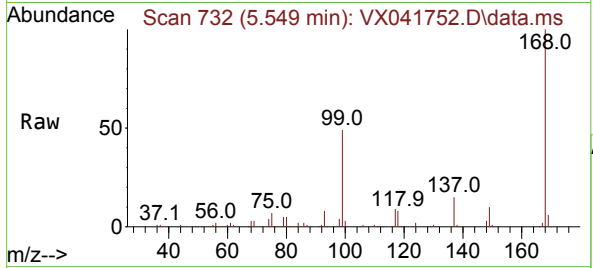
Ion	Ratio	Lower	Upper
113	100		
111	101.9	82.9	124.3
192	23.8	13.3	19.9





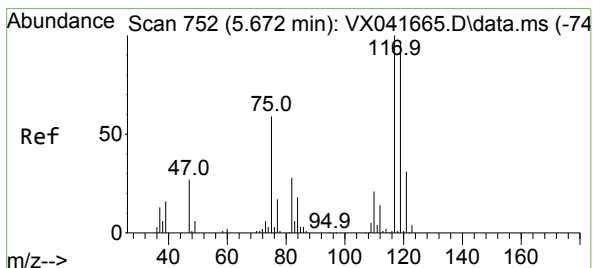
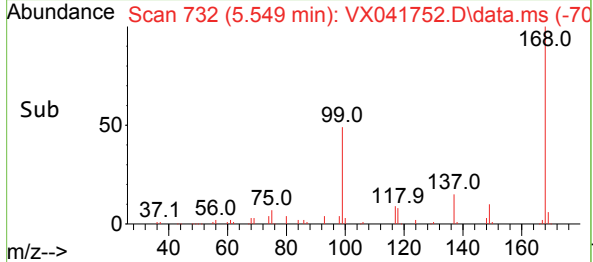
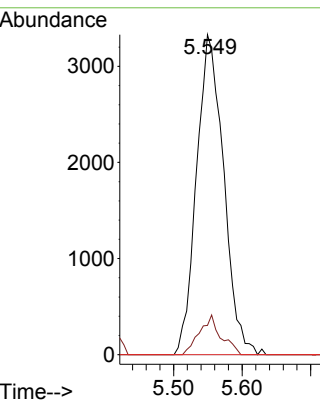
#36  
 1,1-Dichloropropene  
 Concen: 5.027 ug/l  
 RT: 5.549 min Scan# 711  
 Delta R.T. -0.140 min  
 Lab File: VX041752.D  
 Acq: 05 Jun 2024 16:02

Instrument :  
 MSVOA\_X  
 ClientSampleId :



Tgt Ion: 75 Resp: 9156

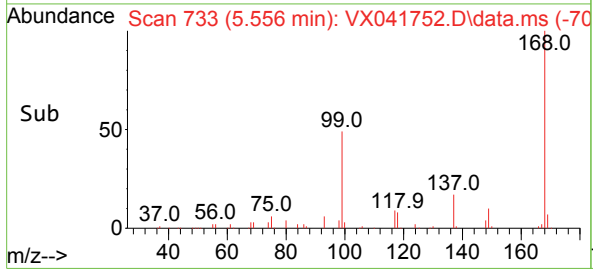
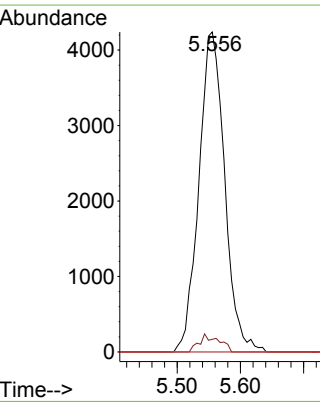
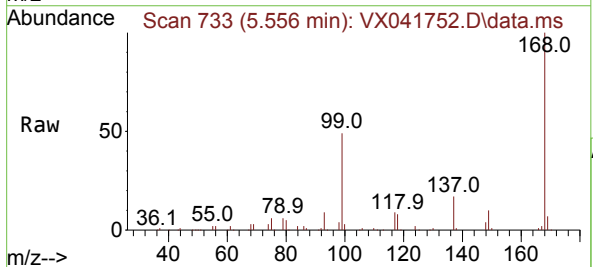
Ion	Ratio	Lower	Upper
75	100		
110	9.8	17.0	50.9#
77	0.0	24.7	37.1#



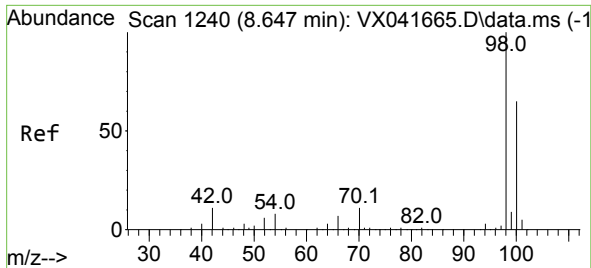
#38  
 Carbon Tetrachloride  
 Concen: 5.787 ug/l  
 RT: 5.556 min Scan# 733  
 Delta R.T. -0.116 min  
 Lab File: VX041752.D  
 Acq: 05 Jun 2024 16:02

Tgt Ion: 117 Resp: 11977

Ion	Ratio	Lower	Upper
117	100		
119	4.0	78.2	117.2#
121	0.0	24.4	36.6#

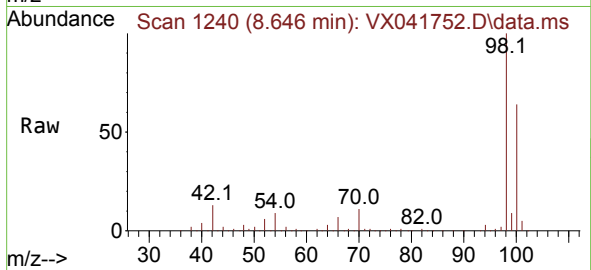




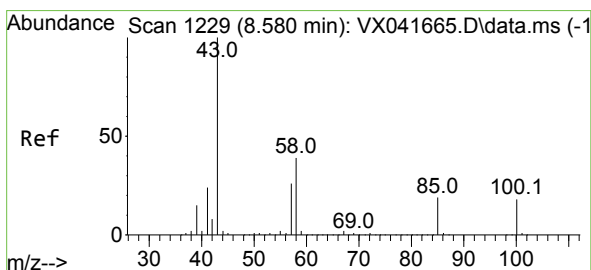
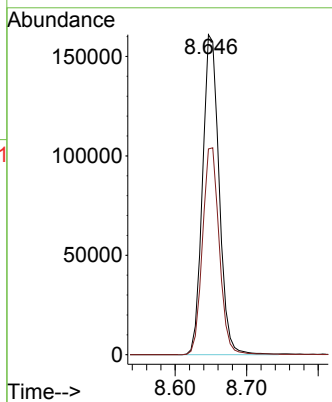
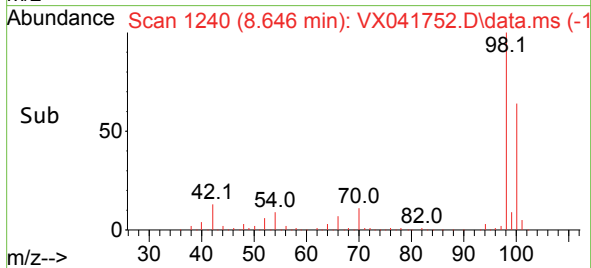


#50  
 Toluene-d8  
 Concen: 49.261 ug/l  
 RT: 8.646 min Scan# 1240  
 Delta R.T. -0.000 min  
 Lab File: VX041752.D  
 Acq: 05 Jun 2024 16:02

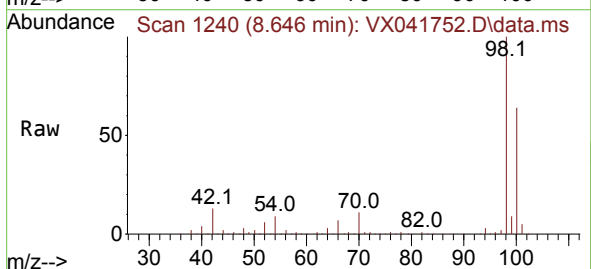
Instrument :  
 MSVOA\_X  
 ClientSampleId :



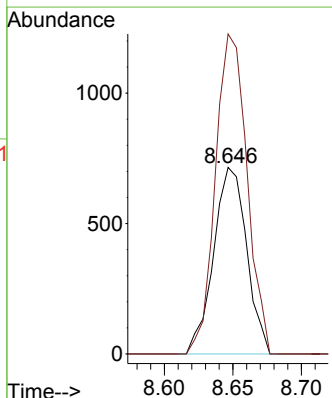
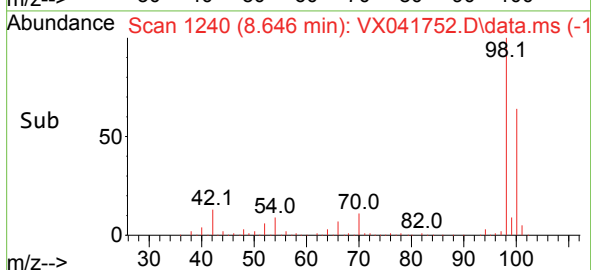
Tgt Ion: 98 Resp: 258936  
 Ion Ratio Lower Upper  
 98 100  
 100 65.5 53.1 79.7

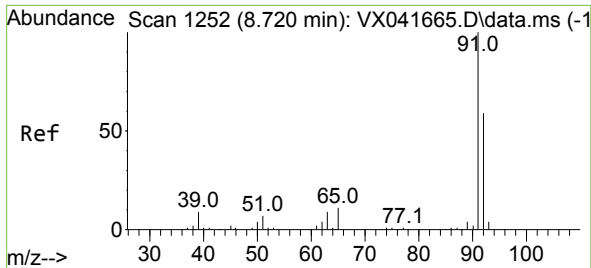


#51  
 4-Methyl-2-Pentanone  
 Concen: 0.533 ug/l  
 RT: 8.646 min Scan# 1240  
 Delta R.T. 0.067 min  
 Lab File: VX041752.D  
 Acq: 05 Jun 2024 16:02



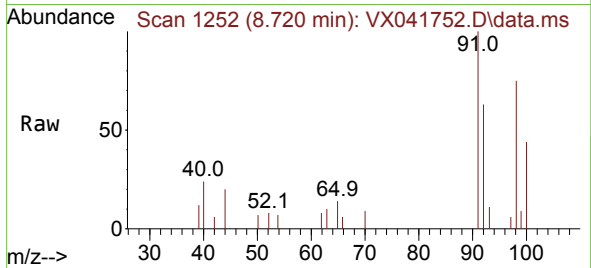
Tgt Ion: 43 Resp: 1200  
 Ion Ratio Lower Upper  
 43 100  
 58 164.3 30.4 45.6#



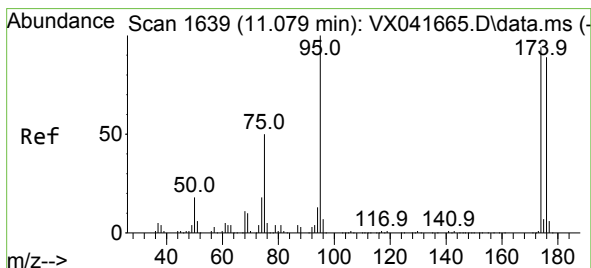
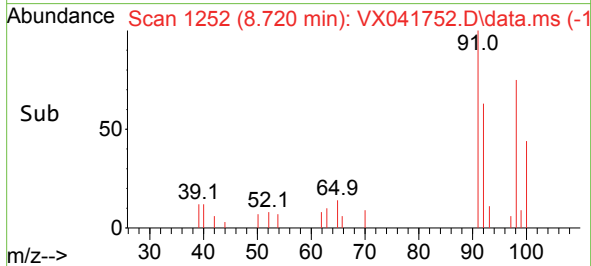
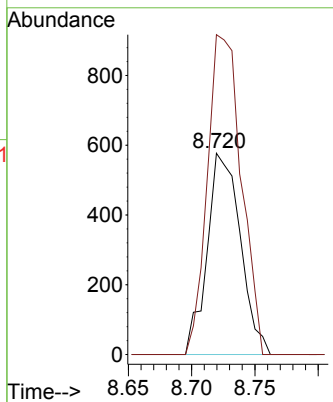


#52  
 Toluene  
 Concen: 0.291 ug/l  
 RT: 8.720 min Scan# 11  
 Delta R.T. -0.000 min  
 Lab File: VX041752.D  
 Acq: 05 Jun 2024 16:02

Instrument :  
 MSVOA\_X  
 ClientSampleId :

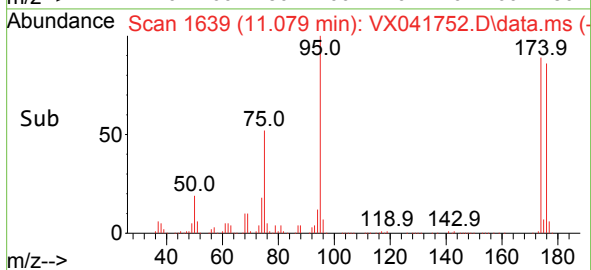
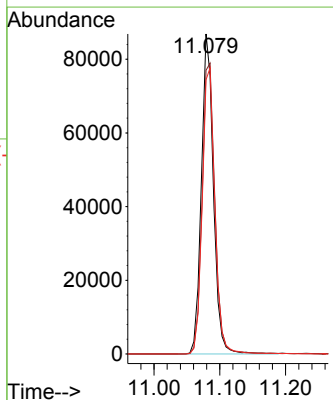
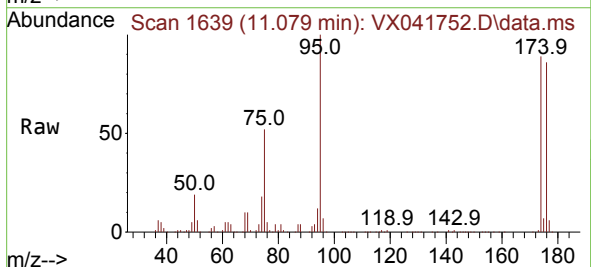


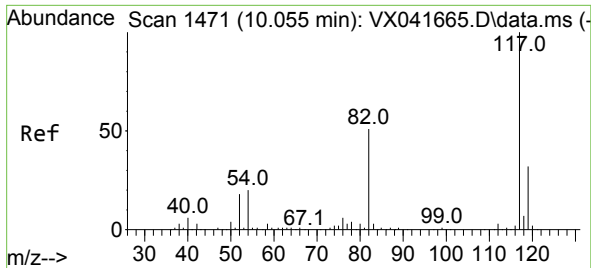
Tgt Ion: 92 Resp: 1053  
 Ion Ratio Lower Upper  
 92 100  
 91 162.4 134.2 201.2



#62  
 4-Bromofluorobenzene  
 Concen: 56.998 ug/l  
 RT: 11.079 min Scan# 1639  
 Delta R.T. -0.000 min  
 Lab File: VX041752.D  
 Acq: 05 Jun 2024 16:02

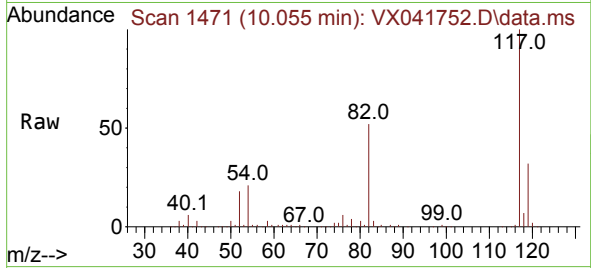
Tgt Ion: 95 Resp: 110578  
 Ion Ratio Lower Upper  
 95 100  
 174 96.4 0.0 135.6  
 176 93.3 0.0 131.0



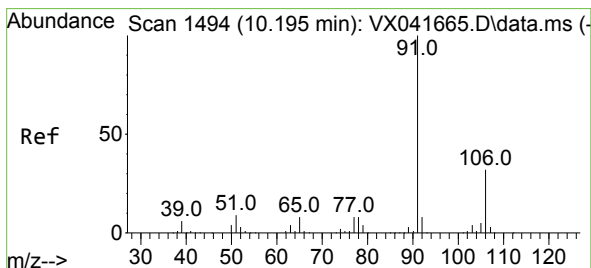
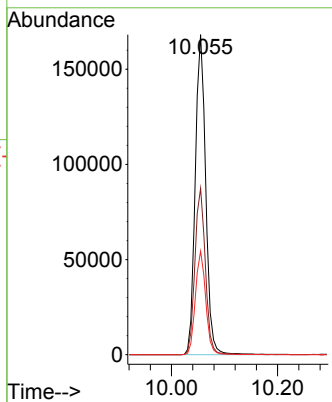
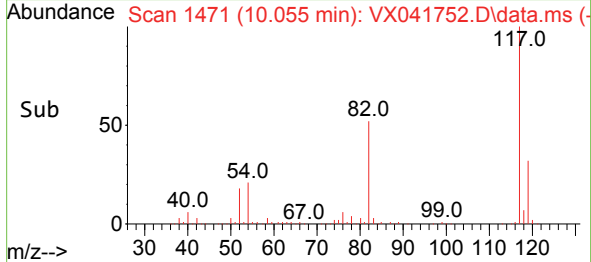


#63  
 Chlorobenzene-d5  
 Concen: 50.000 ug/l  
 RT: 10.055 min Scan# 14  
 Delta R.T. -0.000 min  
 Lab File: VX041752.D  
 Acq: 05 Jun 2024 16:02

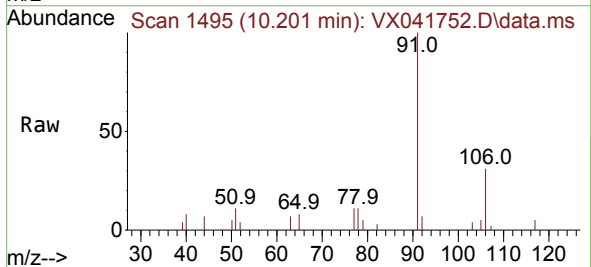
Instrument :  
 MSVOA\_X  
 ClientSampleId :



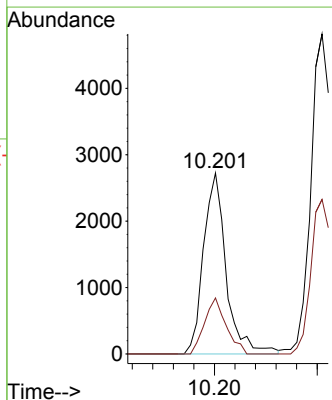
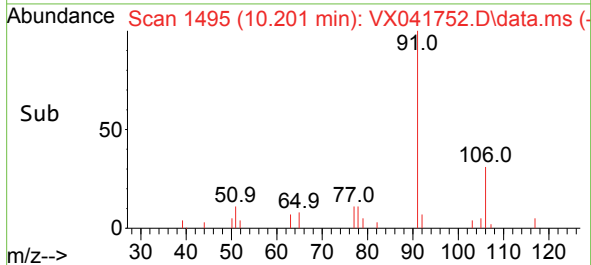
Tgt Ion:117 Resp: 229947  
 Ion Ratio Lower Upper  
 117 100  
 82 52.0 46.2 69.4  
 119 32.3 25.5 38.3

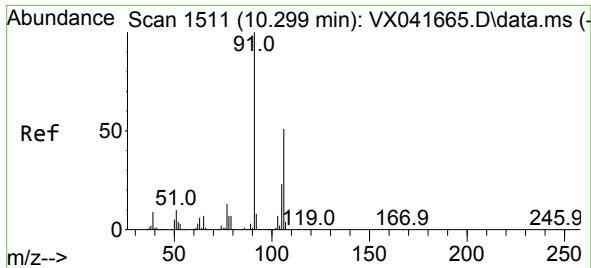


#67  
 Ethyl Benzene  
 Concen: 0.530 ug/l  
 RT: 10.201 min Scan# 1495  
 Delta R.T. 0.006 min  
 Lab File: VX041752.D  
 Acq: 05 Jun 2024 16:02



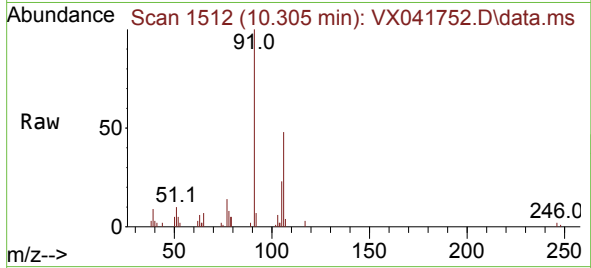
Tgt Ion: 91 Resp: 4169  
 Ion Ratio Lower Upper  
 91 100  
 106 30.9 24.9 37.3



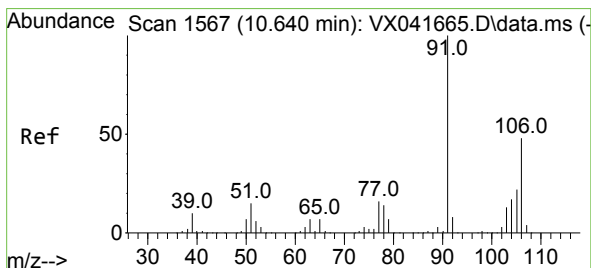
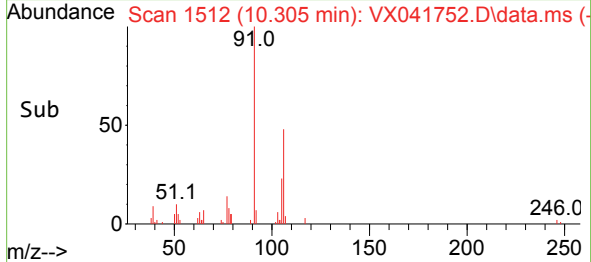
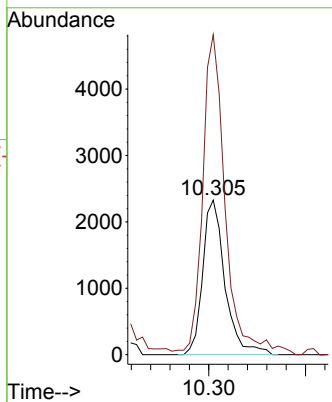


#68  
 m/p-Xylenes  
 Concen: 1.189 ug/l  
 RT: 10.305 min Scan# 1512  
 Delta R.T. 0.006 min  
 Lab File: VX041752.D  
 Acq: 05 Jun 2024 16:02

Instrument :  
 MSVOA\_X  
 ClientSampleId :

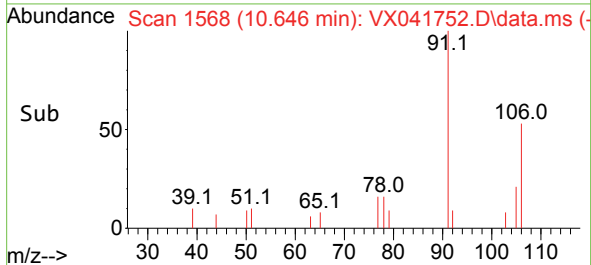
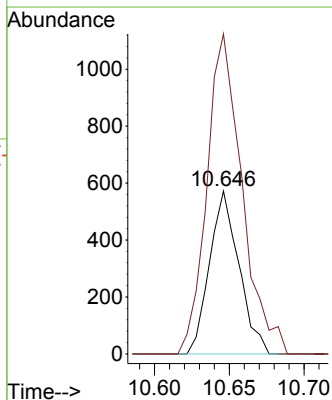
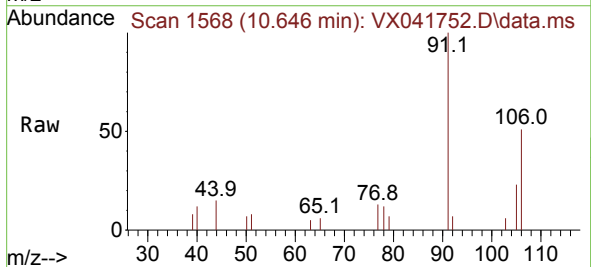


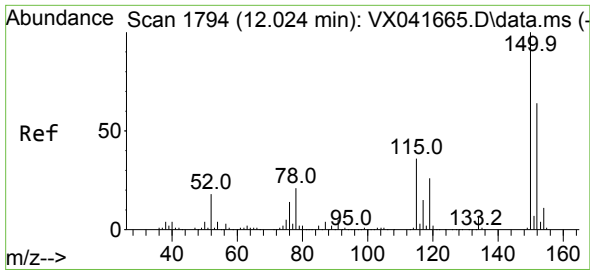
Tgt Ion:106 Resp: 3719  
 Ion Ratio Lower Upper  
 106 100  
 91 211.1 165.5 248.3



#69  
 o-Xylene  
 Concen: 0.251 ug/l  
 RT: 10.646 min Scan# 1568  
 Delta R.T. 0.006 min  
 Lab File: VX041752.D  
 Acq: 05 Jun 2024 16:02

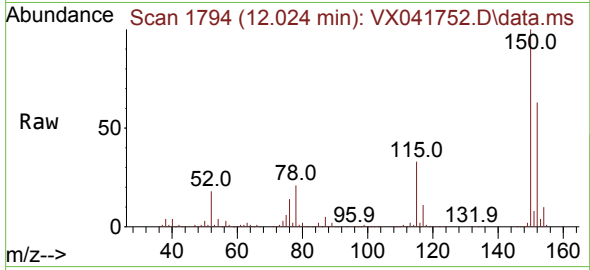
Tgt Ion:106 Resp: 781  
 Ion Ratio Lower Upper  
 106 100  
 91 235.2 108.9 326.8



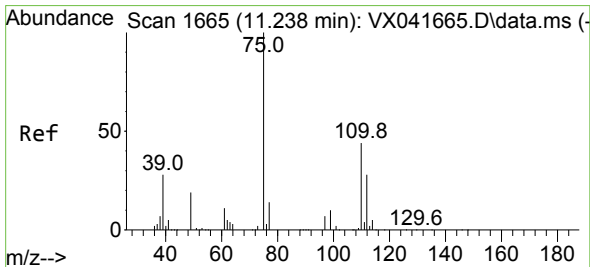
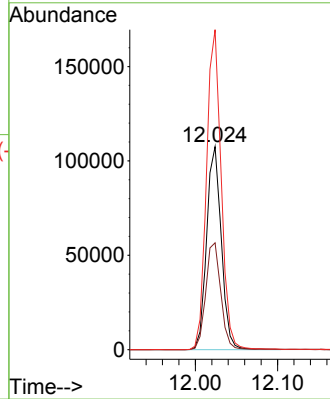
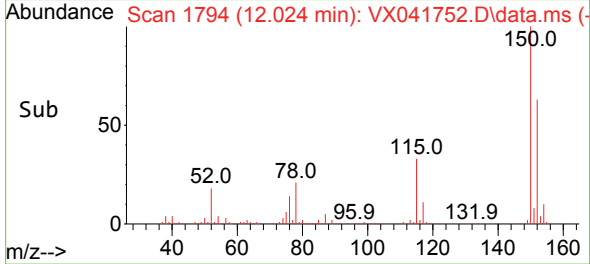


#72  
 1,4-Dichlorobenzene-d4  
 Concen: 50.000 ug/l  
 RT: 12.024 min Scan# 1  
 Delta R.T. -0.000 min  
 Lab File: VX041752.D  
 Acq: 05 Jun 2024 16:02

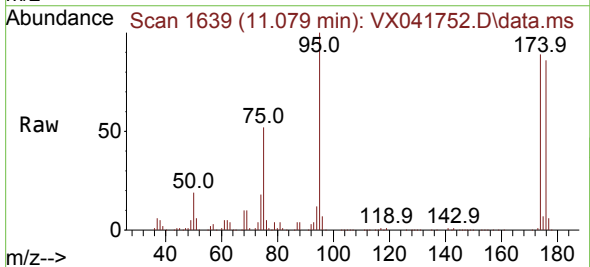
Instrument :  
 MSVOA\_X  
 ClientSampleId :



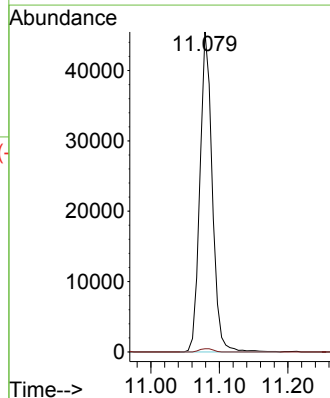
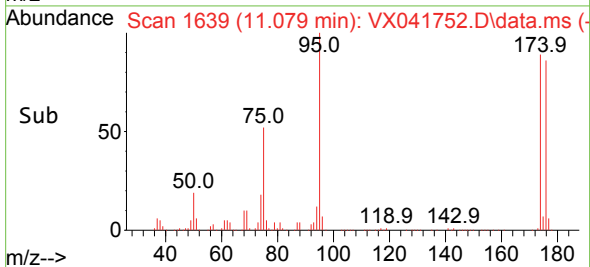
Tgt Ion:152 Resp: 133643  
 Ion Ratio Lower Upper  
 152 100  
 115 54.3 43.3 129.9  
 150 157.9 0.0 345.0

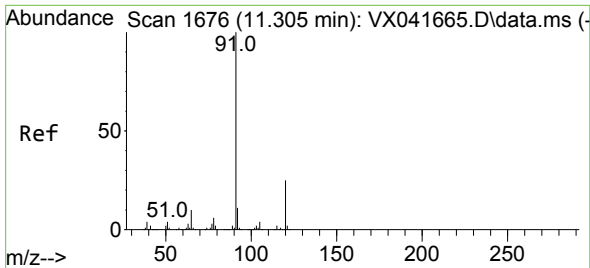


#76  
 1,2,3-Trichloropropane  
 Concen: 24.528 ug/l  
 RT: 11.079 min Scan# 1639  
 Delta R.T. -0.159 min  
 Lab File: VX041752.D  
 Acq: 05 Jun 2024 16:02



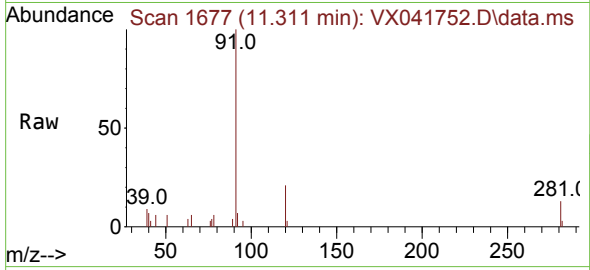
Tgt Ion: 75 Resp: 57194  
 Ion Ratio Lower Upper  
 75 100  
 77 1.1 19.1 57.5#



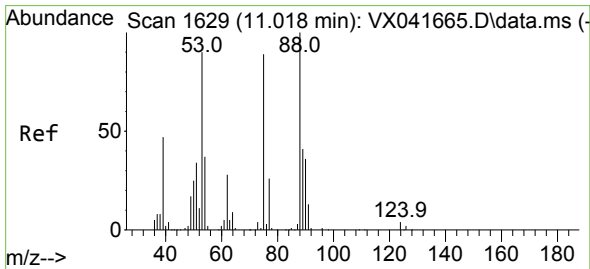
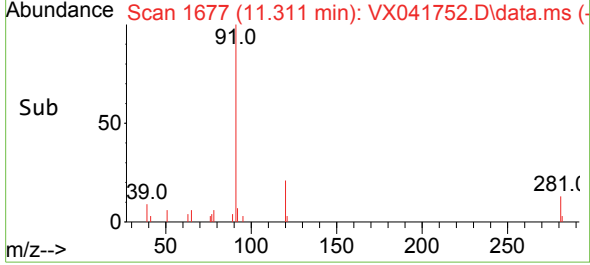
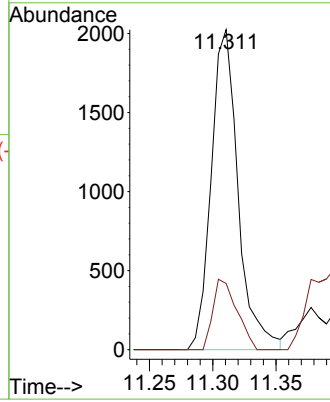


#78  
 n-propylbenzene  
 Concen: 0.329 ug/l  
 RT: 11.311 min Scan# 1677  
 Delta R.T. 0.006 min  
 Lab File: VX041752.D  
 Acq: 05 Jun 2024 16:02

Instrument : MSVOA\_X  
 ClientSampleId :

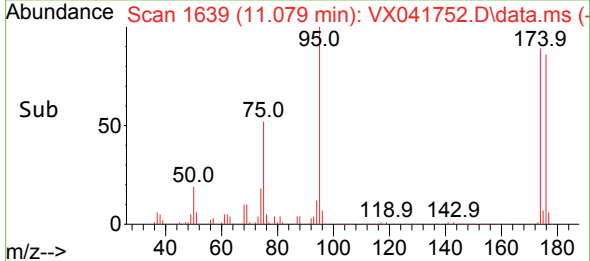
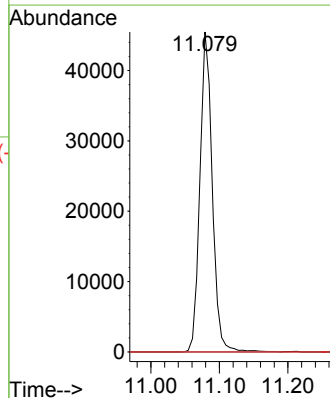
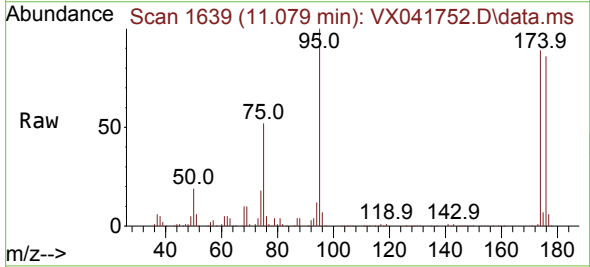


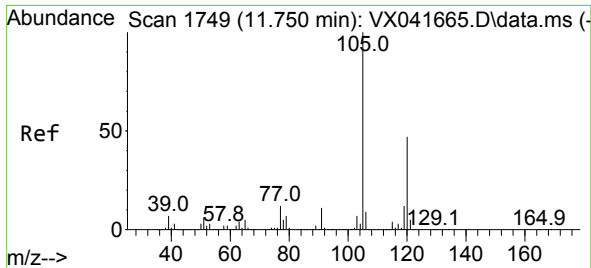
Tgt Ion: 91 Resp: 2993  
 Ion Ratio Lower Upper  
 91 100  
 120 19.5 11.5 34.4



#81  
 trans-1,4-Dichloro-2-butene  
 Concen: 66.851 ug/l  
 RT: 11.079 min Scan# 1639  
 Delta R.T. 0.061 min  
 Lab File: VX041752.D  
 Acq: 05 Jun 2024 16:02

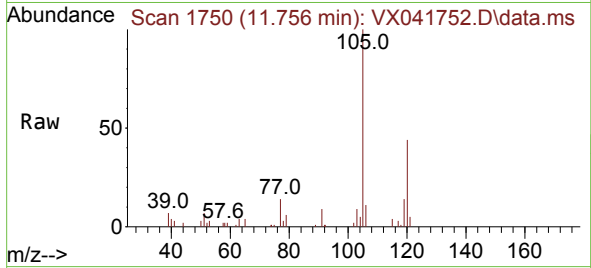
Tgt Ion: 75 Resp: 57194  
 Ion Ratio Lower Upper  
 75 100  
 53 0.0 90.5 135.7#  
 89 0.0 36.9 55.3#



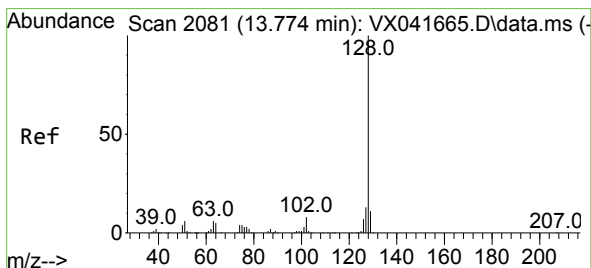
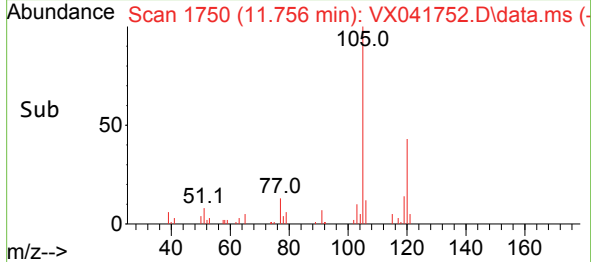
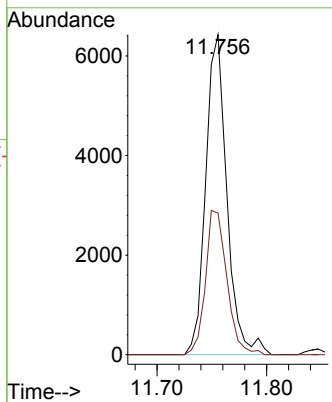


#84  
 1,2,4-Trimethylbenzene  
 Concen: 1.228 ug/l  
 RT: 11.756 min Scan# 11756  
 Delta R.T. 0.006 min  
 Lab File: VX041752.D  
 Acq: 05 Jun 2024 16:02

Instrument :  
 MSVOA\_X  
 ClientSampleId :



Tgt Ion:105 Resp: 8614  
 Ion Ratio Lower Upper  
 105 100  
 120 45.7 21.2 63.6



#95  
 Naphthalene  
 Concen: 0.377 ug/l  
 RT: 13.780 min Scan# 2082  
 Delta R.T. 0.006 min  
 Lab File: VX041752.D  
 Acq: 05 Jun 2024 16:02

Tgt Ion:128 Resp: 3260  
 Ion Ratio Lower Upper  
 128 100  
 127 14.9 10.3 15.5  
 129 9.1 8.8 13.2

