

Data Path : Z:\VOASRV\HPCHEM1\MSVOA X\DATA\VX060618\
 Data File : VX002358.D
 Acq On : 06 Jun 2018 17:42
 Operator : JC/MD
 Sample : J3312-01
 Misc : 5.0mL/MSVOA X/WATER
 ALS Vial : 17 Sample Multiplier: 1

Instrument :
 MSVOA_X
 ClientSampled :
 W-17

Quant Time: Jun 07 03:24:37 2018
 Quant Method : Z:\VOASRV\HPCHEM1\MSVOA_X\METHOD\82X060418W.M
 Quant Title : SW846 8260
 QLast Update : Tue Jun 05 03:22:35 2018
 Response via : Initial Calibration

Internal Standards	R.T.	QIon	Response	Conc	Units	Dev(Min)
1) Pentafluorobenzene	5.67	168	234373	50.00	ug/l	0.00
34) 1,4-Difluorobenzene	6.87	114	340732	50.00	ug/l	0.00
63) Chlorobenzene-d5	10.12	117	309725	50.00	ug/l	0.00
72) 1,4-Dichlorobenzene-d4	12.09	152	176771	50.00	ug/l	0.00

System Monitoring Compounds

33) 1,2-Dichloroethane-d4	6.07	65	159485	47.41	ug/l	0.00
Spiked Amount	50.000		Recovery	=	94.82%	
35) Dibromofluoromethane	5.51	113	119610	44.64	ug/l	0.00
Spiked Amount	50.000		Recovery	=	89.28%	
50) Toluene-d8	8.72	98	483511	47.08	ug/l	0.00
Spiked Amount	50.000		Recovery	=	94.16%	
62) 4-Bromofluorobenzene	11.14	95	171069	43.19	ug/l	0.00
Spiked Amount	50.000		Recovery	=	86.38%	

Target Compounds

						Qvalue
3) Chloromethane	1.32	50	580	Below Cal	#	81
5) Bromomethane	1.65	94	802	Below Cal	#	75
6) Chloroethane	1.69	64	629	0.32	ug/l	# 43
8) Diethyl Ether	2.18	74	150	Below Cal		98
10) Methyl Iodide	2.52	142	1341	0.38	ug/l	# 93
11) Tert butyl alcohol	3.07	59	1024	Below Cal	#	56
13) Acrolein	2.29	56	73	Below Cal	#	14
15) Acrylonitrile	3.15	53	310	Below Cal	#	43
16) Acetone	2.45	43	869	Below Cal	#	79
18) Methyl Acetate	2.76	43	244	Below Cal		98
19) Methyl tert-butyl Ether	3.20	73	251	Below Cal	#	67
20) Methylene Chloride	2.86	84	647	Below Cal	#	55
22) Diisopropyl ether	3.90	45	127	Below Cal	#	35
28) Bromochloromethane	4.99	49	25	Below Cal	#	13
31) Cyclohexane	5.57	56	5049	1.19	ug/l	95
36) 1,1-Dichloropropene	5.67	75	16117	4.50	ug/l	# 52
38) Carbon Tetrachloride	5.67	117	21743	5.80	ug/l	# 15
39) Methylcyclohexane	7.47	83	4536	1.28	ug/l	# 82
65) Chlorobenzene	10.14	112	2015	0.26	ug/l	98
73) Isopropylbenzene	11.02	105	62751	5.10	ug/l	100
76) 1,2,3-Trichloropropane	11.14	75	91862	23.68	ug/l	# 32
78) n-propylbenzene	11.37	91	31432	2.30	ug/l	98
79) 2-Chlorotoluene	11.37	91	31432	3.64	ug/l	# 39
81) trans-1,4-Dichloro-2-buten	11.14	75	91862	83.02	ug/l	# 6
82) 4-Chlorotoluene	11.37	91	31432	3.16	ug/l	# 44
83) tert-Butylbenzene	11.77	119	30095	2.93	ug/l	95
84) 1,2,4-Trimethylbenzene	11.95	105	62520	5.76	ug/l	# 32
85) sec-Butylbenzene	11.95	105	62520	5.19	ug/l	81
86) p-Isopropyltoluene	12.24	119	12131	1.11	ug/l	95
89) n-Butylbenzene	12.39	91	15558	1.69	ug/l	# 64
90) Hexachloroethane	12.67	117	23805	13.60	ug/l	# 1
92) 1,2-Dibromo-3-Chloropropan	12.98	75	1605	1.90	ug/l	# 1
95) Naphthalene	13.84	128	12513	0.97	ug/l	# 83

Data Path : Z:\VOASRV\HPCHEM1\MSVOA X\DATA\VX060618\
 Data File : VX002358.D
 Acq On : 06 Jun 2018 17:42
 Operator : JC/MD
 Sample : J3312-01
 Misc : 5.0mL/MSVOA X/WATER
 ALS Vial : 17 Sample Multiplier: 1

Instrument :
 MSVOA_X
 ClientSampleId :
 W-17

Quant Time: Jun 07 03:24:37 2018
 Quant Method : Z:\VOASRV\HPCHEM1\MSVOA_X\METHOD\82X060418W.M
 Quant Title : SW846 8260
 QLast Update : Tue Jun 05 03:22:35 2018
 Response via : Initial Calibration

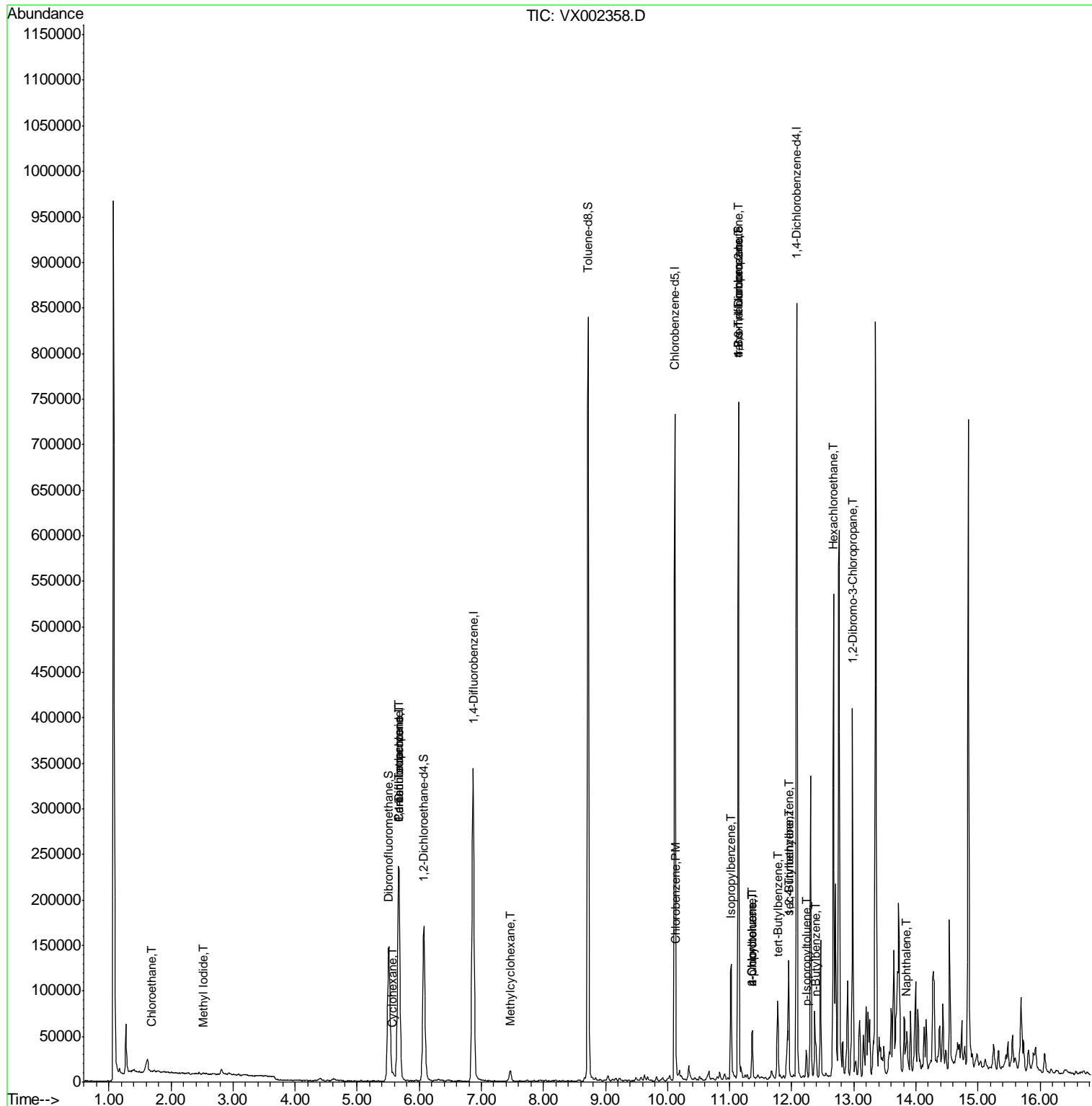
Internal Standards	R.T.	QIon	Response	Conc	Units	Dev(Min)
--------------------	------	------	----------	------	-------	----------

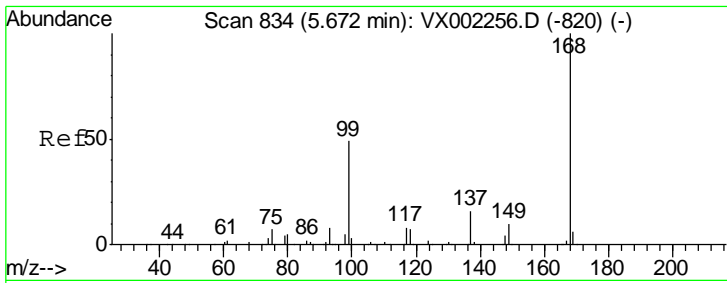
(#) = qualifier out of range (m) = manual integration (+) = signals summed

Data Path : Z:\VOASRV\HPCHEM1\MSVOA X\DATA\VX060618\
 Data File : VX002358.D
 Acq On : 06 Jun 2018 17:42
 Operator : JC/MD
 Sample : J3312-01
 Misc : 5.0mL/MSVOA X/WATER
 ALS Vial : 17 Sample Multiplier: 1

Instrument :
 MSVOA_X
 ClientSampled :
 W-17

Quant Time: Jun 07 03:24:37 2018
 Quant Method : Z:\VOASRV\HPCHEM1\MSVOA_X\METHOD\82X060418W.M
 Quant Title : SW846 8260
 QLast Update : Tue Jun 05 03:22:35 2018
 Response via : Initial Calibration

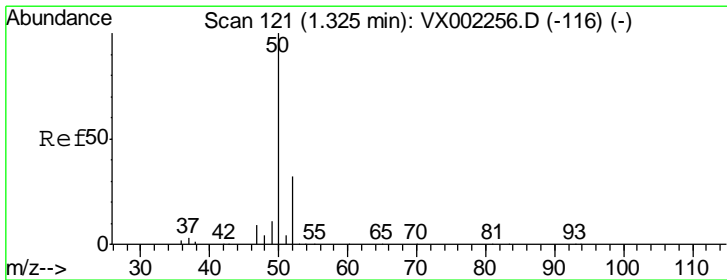
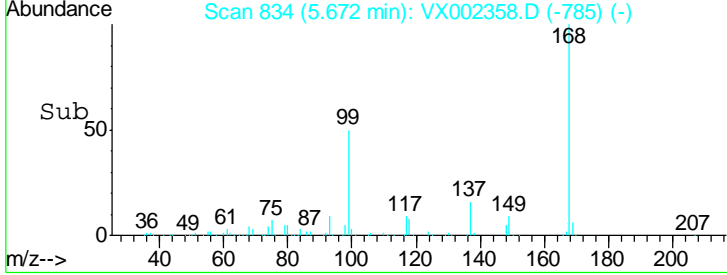
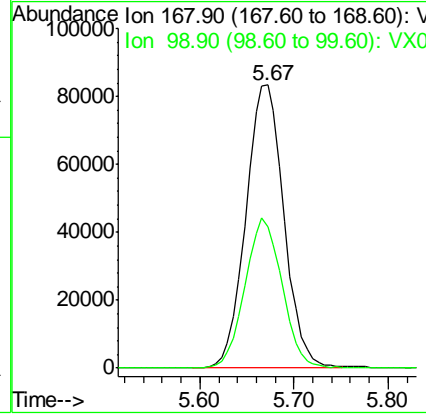
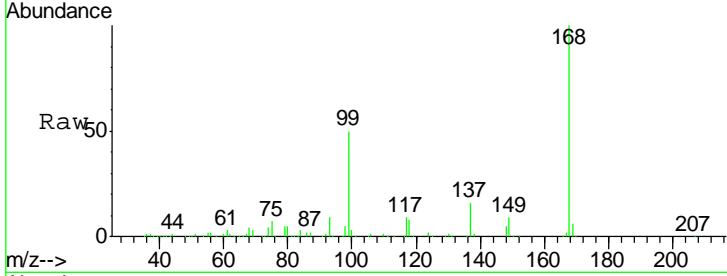




#1
 Pentafluorobenzene
 Concen: 50.00 ug/l
 RT: 5.67 min Scan# 834
 Delta R.T. 0.00 min
 Lab File: VX002358.D
 Acq: 06 Jun 2018 17:42

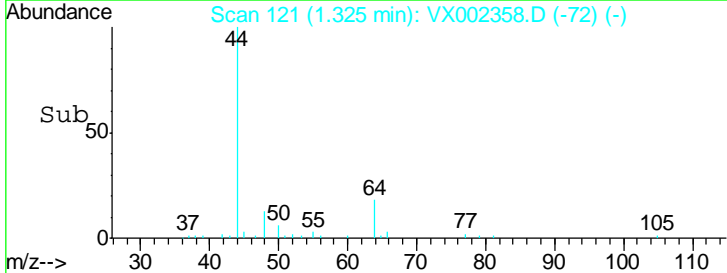
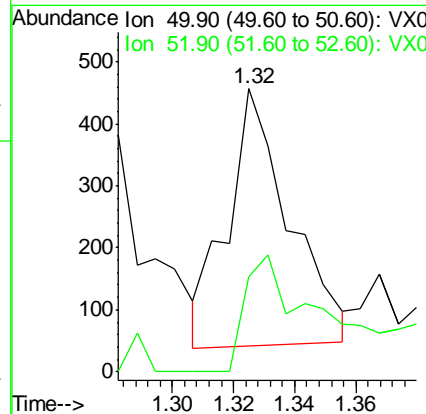
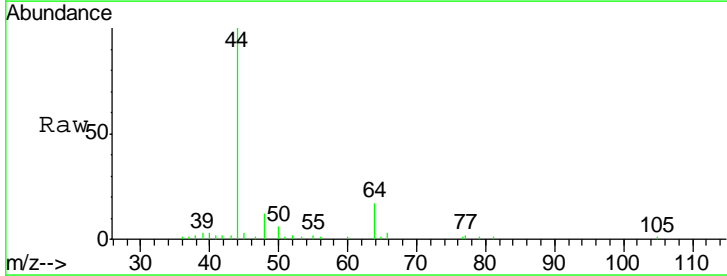
Instrument : MSVOA_X
 ClientSampled : W-17

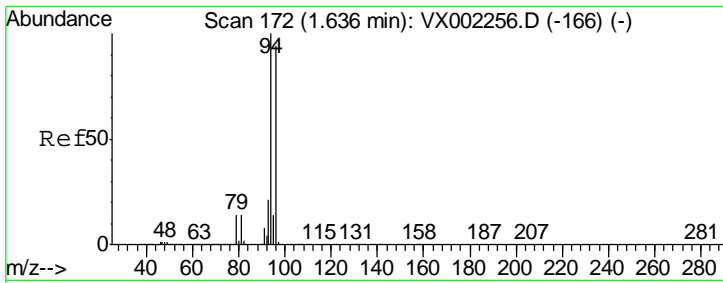
Tgt Ion	Resp	Lower	Upper
168	100		
99	50.1	39.3	58.9



#3
 Chloromethane
 Concen: Below Cal
 RT: 1.32 min Scan# 121
 Delta R.T. 0.00 min
 Lab File: VX002358.D
 Acq: 06 Jun 2018 17:42

Tgt Ion	Resp	Lower	Upper
50	100		
52	42.9	25.7	38.5#

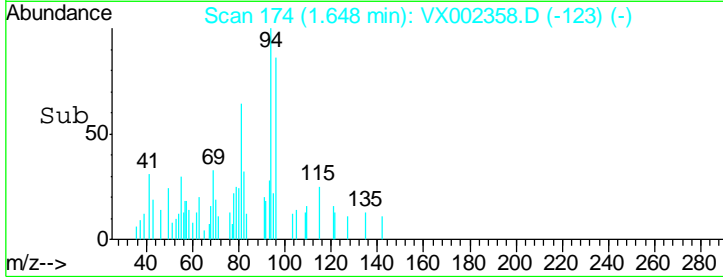
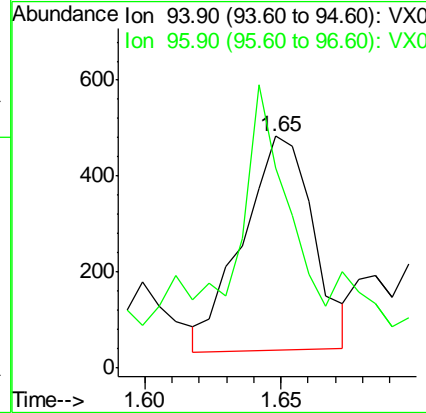
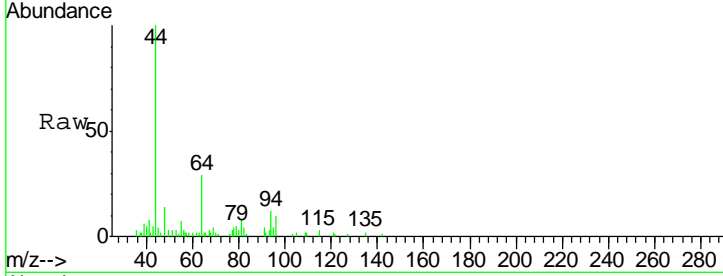




#5
 Bromomethane
 Concen: Below Cal
 RT: 1.65 min Scan# 174
 Delta R.T. 0.01 min
 Lab File: VX002358.D
 Acq: 06 Jun 2018 17:42

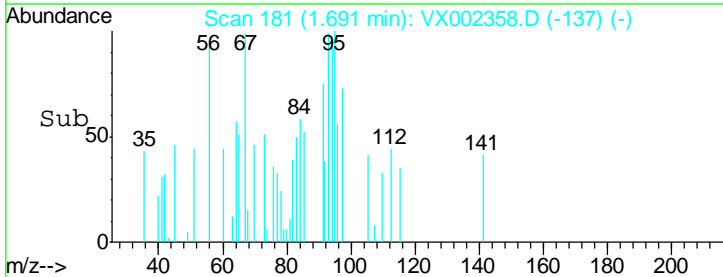
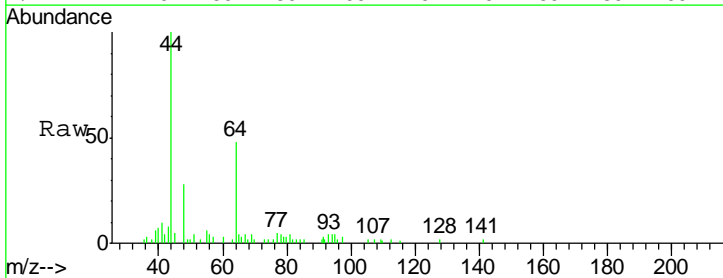
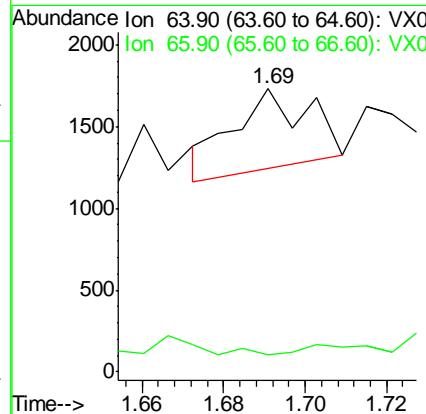
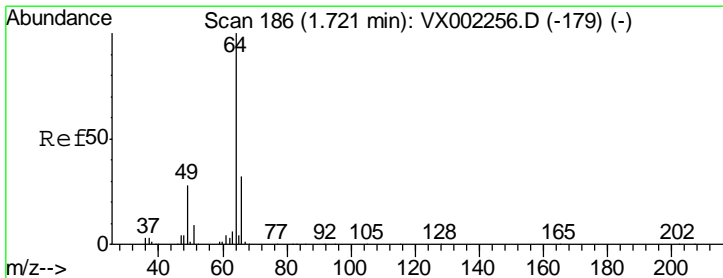
Instrument : MSVOA_X
 ClientSampled : W-17

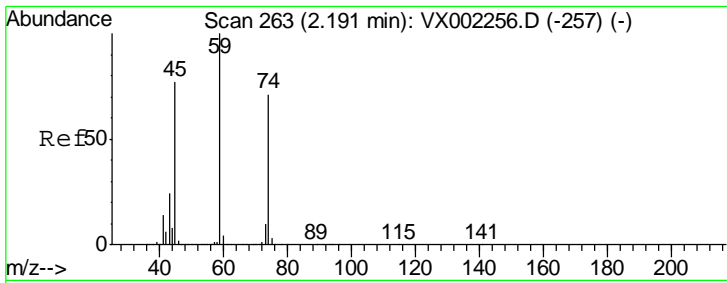
Tgt Ion: 94 Resp: 802
 Ion Ratio Lower Upper
 94 100
 96 69.1 74.9 112.3#



#6
 Chloroethane
 Concen: 0.32 ug/l
 RT: 1.69 min Scan# 181
 Delta R.T. -0.03 min
 Lab File: VX002358.D
 Acq: 06 Jun 2018 17:42

Tgt Ion: 64 Resp: 629
 Ion Ratio Lower Upper
 64 100
 66 0.0 25.5 38.3#

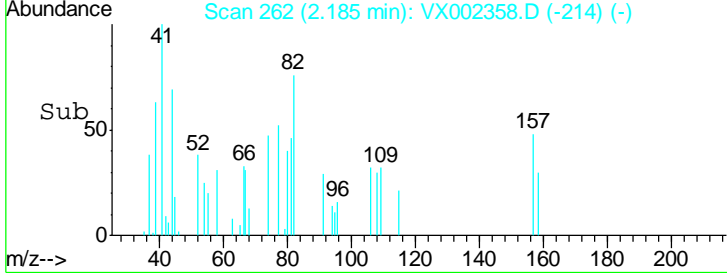
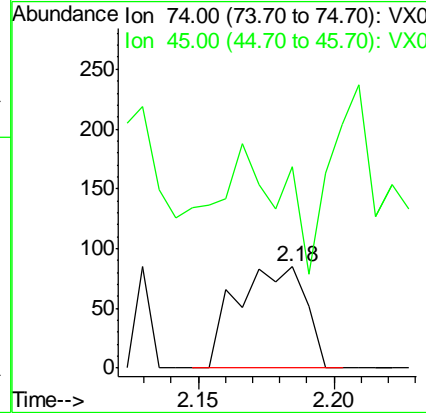
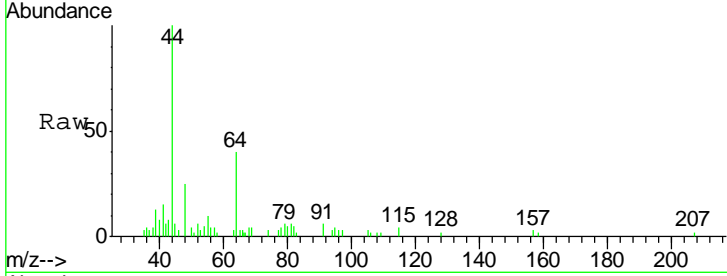




#8
 Diethyl Ether
 Concen: Below Cal
 RT: 2.18 min Scan# 262
 Delta R.T. -0.01 min
 Lab File: VX002358.D
 Acq: 06 Jun 2018 17:42

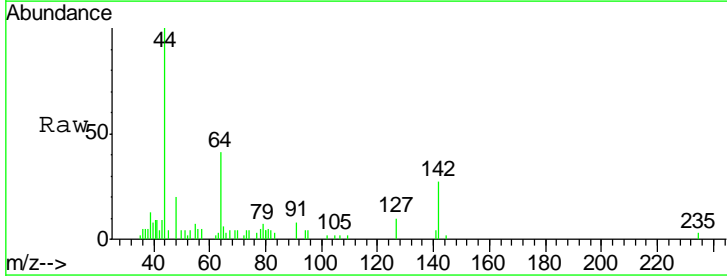
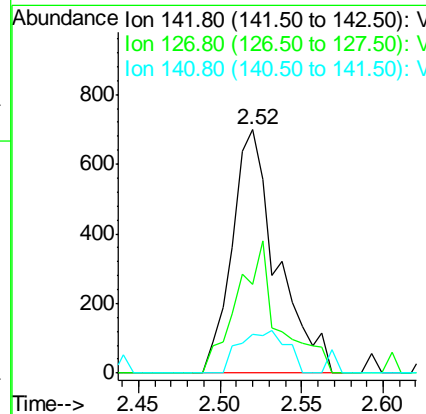
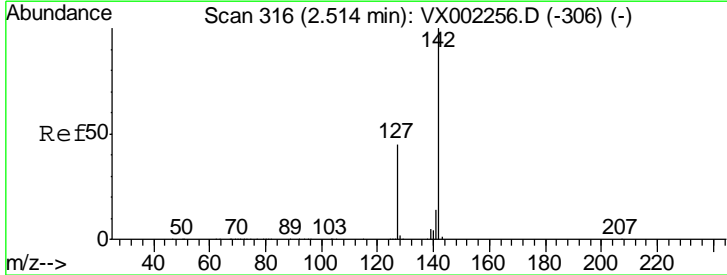
Instrument :
 MSVOA_X
 ClientSampled :
 W-17

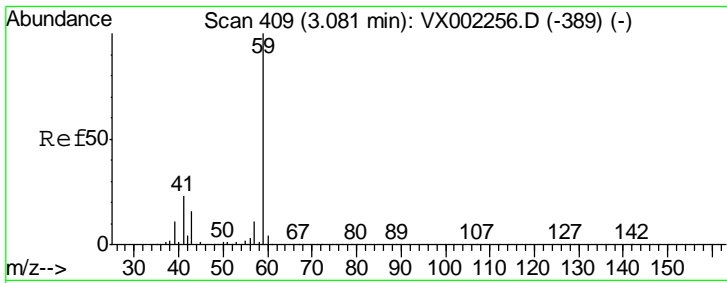
Tgt Ion	Resp	Lower	Upper
74	100		
45	108.7	53.1	159.4



#10
 Methyl Iodide
 Concen: 0.38 ug/l
 RT: 2.52 min Scan# 317
 Delta R.T. 0.01 min
 Lab File: VX002358.D
 Acq: 06 Jun 2018 17:42

Tgt Ion	Resp	Lower	Upper
142	100		
127	50.1	36.6	55.0
141	18.2	11.3	16.9#

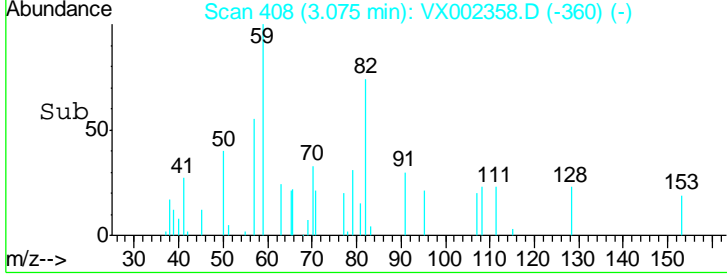
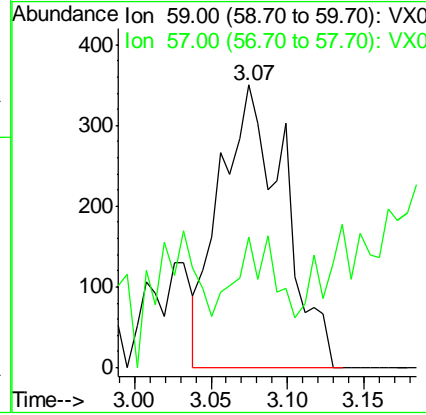
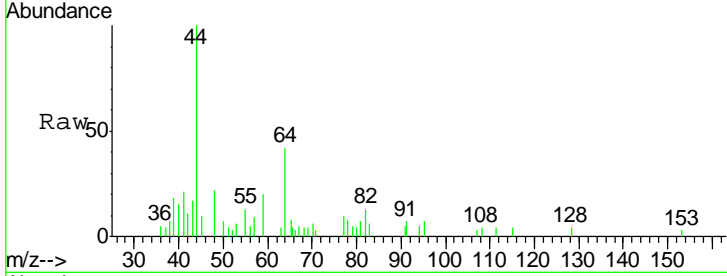




#11
 Tert butyl alcohol
 Concen: Below Cal
 RT: 3.07 min Scan# 408
 Delta R.T. -0.01 min
 Lab File: VX002358.D
 Acq: 06 Jun 2018 17:42

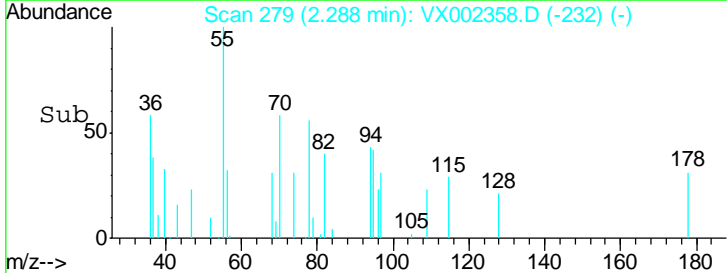
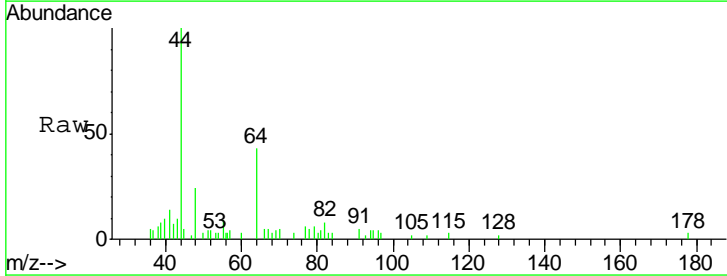
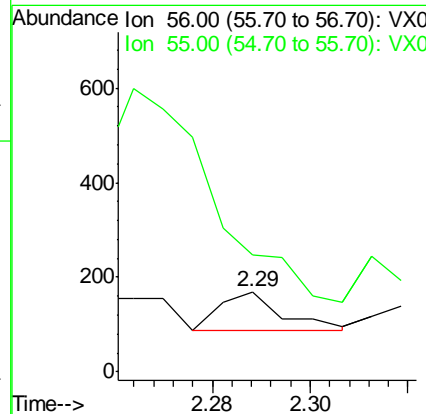
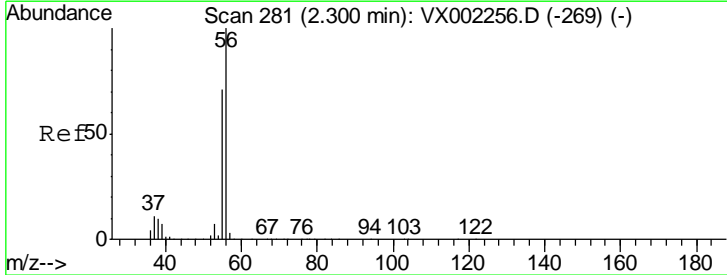
Instrument : MSVOA_X
 ClientSampled : W-17

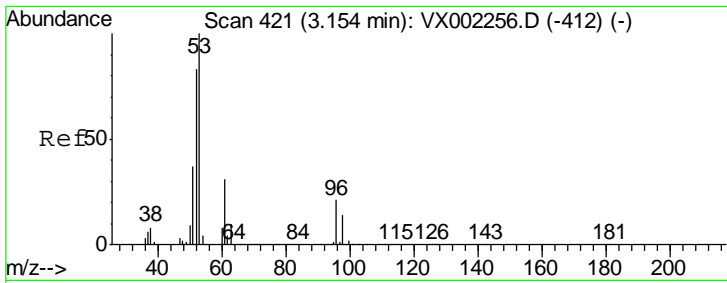
Tgt Ion	Resp	Lower	Upper
59	1024		
57	26.7	8.2	12.2#



#13
 Acrolein
 Concen: Below Cal
 RT: 2.29 min Scan# 279
 Delta R.T. -0.01 min
 Lab File: VX002358.D
 Acq: 06 Jun 2018 17:42

Tgt Ion	Resp	Lower	Upper
56	73		
55	0.0	57.0	85.4#

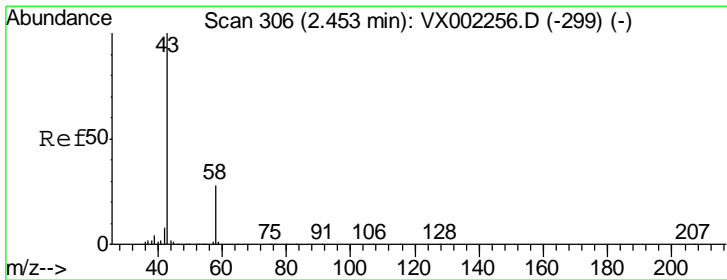
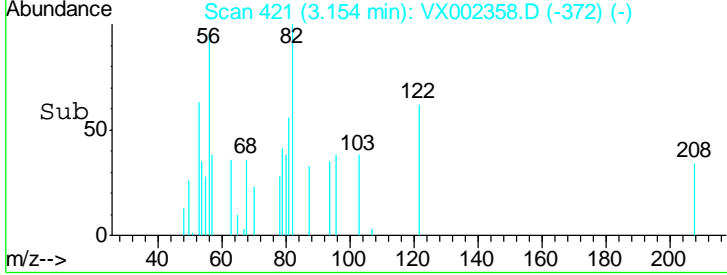
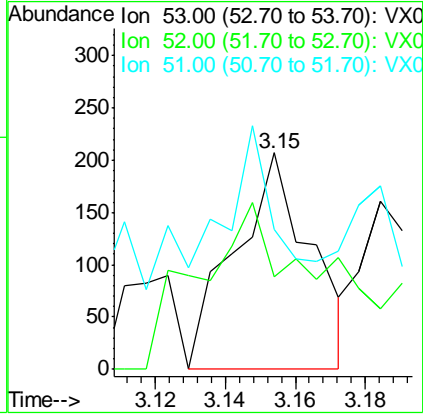
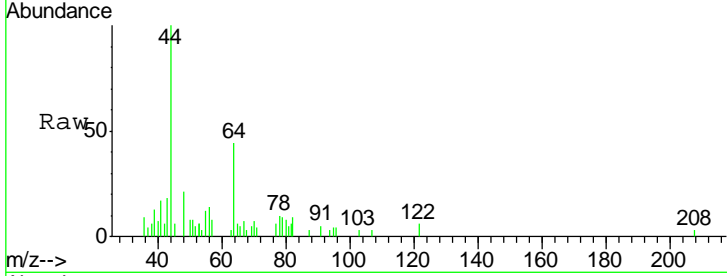




#15
 Acrylonitrile
 Concen: Below Cal
 RT: 3.15 min Scan# 421
 Delta R.T. 0.00 min
 Lab File: VX002358.D
 Acq: 06 Jun 2018 17:42

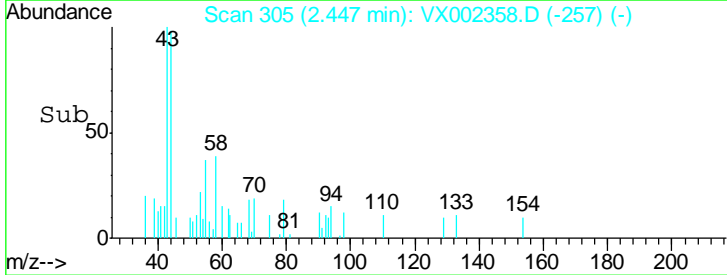
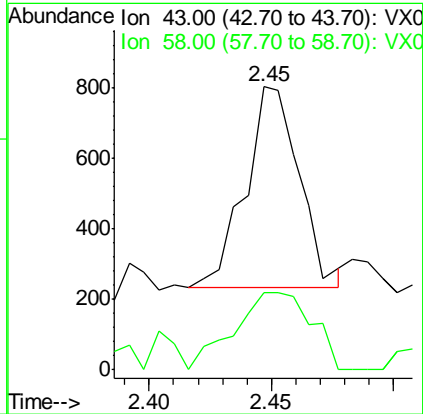
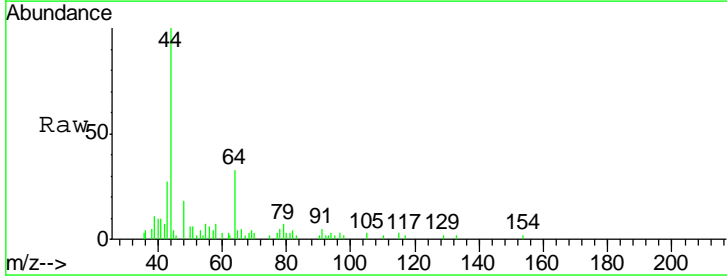
Instrument :
 MSVOA_X
 ClientSampled :
 W-17

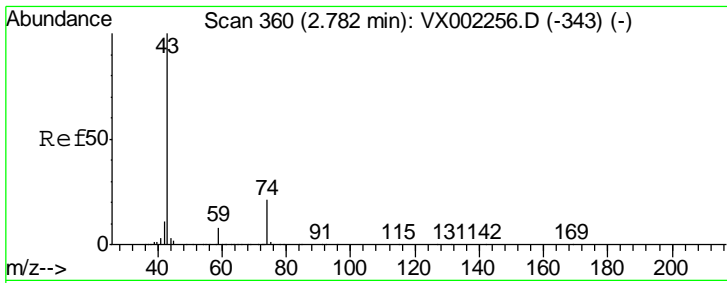
Tgt Ion	Resp	Lower	Upper
53	100		
52	145.2	66.7	100.1#
51	56.1	29.9	44.9#



#16
 Acetone
 Concen: Below Cal
 RT: 2.45 min Scan# 305
 Delta R.T. -0.01 min
 Lab File: VX002358.D
 Acq: 06 Jun 2018 17:42

Tgt Ion	Resp	Lower	Upper
43	100		
58	38.6	22.1	33.1#

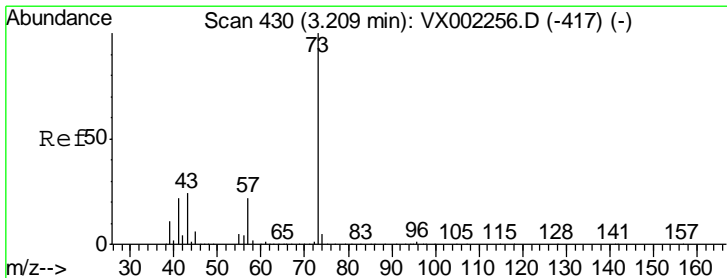
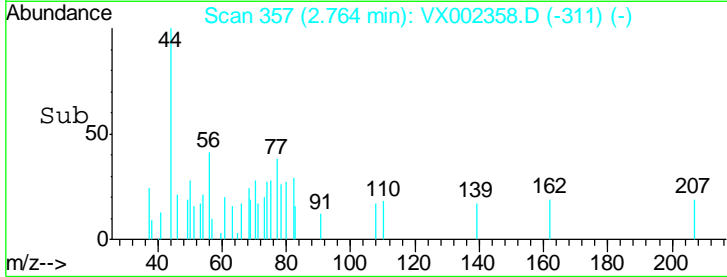
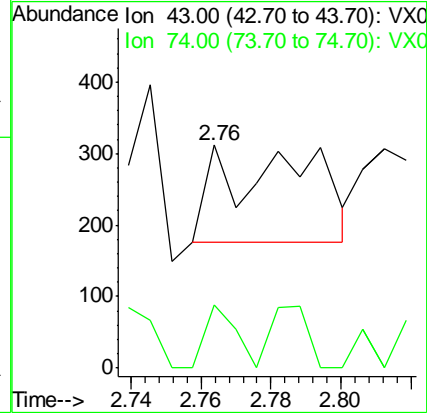
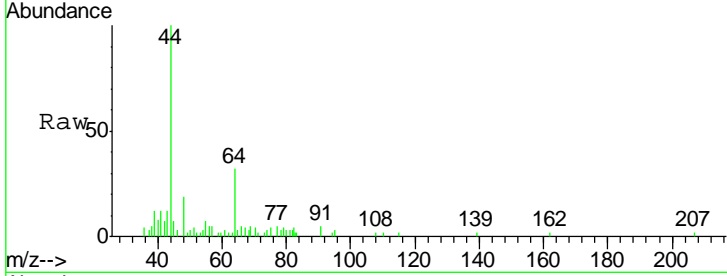




#18
 Methyl Acetate
 Concen: Below Cal
 RT: 2.76 min Scan# 357
 Delta R.T. -0.02 min
 Lab File: VX002358.D
 Acq: 06 Jun 2018 17:42

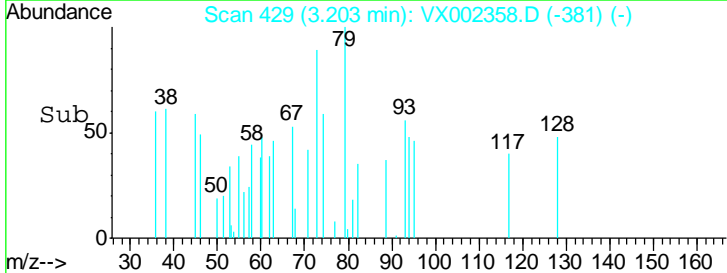
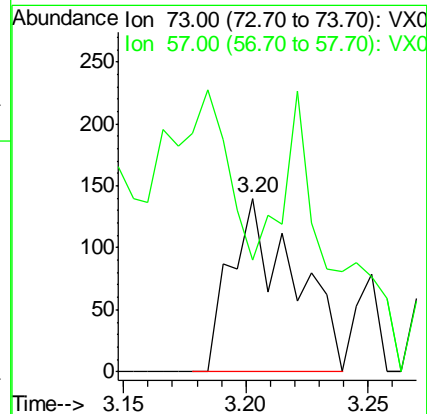
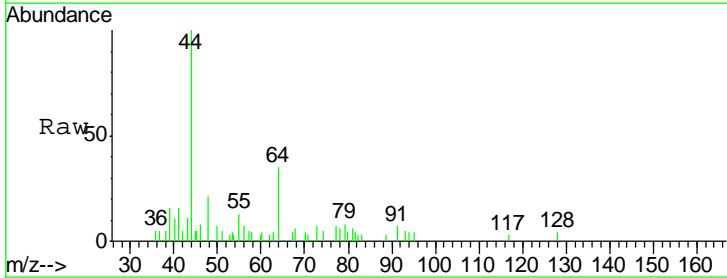
Instrument :
 MSVOA_X
 ClientSampled :
 W-17

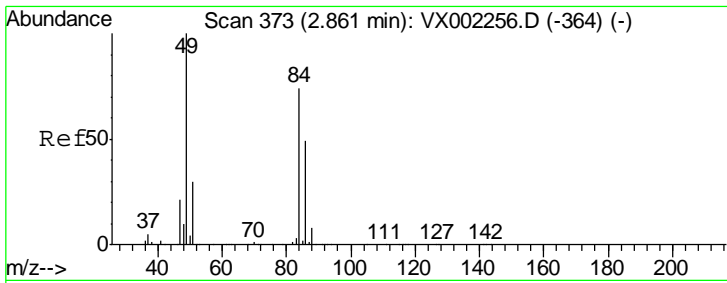
Tgt Ion	Resp	Lower	Upper
43	100		
74	21.7	16.7	25.1



#19
 Methyl tert-butyl Ether
 Concen: Below Cal
 RT: 3.20 min Scan# 429
 Delta R.T. -0.01 min
 Lab File: VX002358.D
 Acq: 06 Jun 2018 17:42

Tgt Ion	Resp	Lower	Upper
73	100		
57	6.4	17.7	26.5#

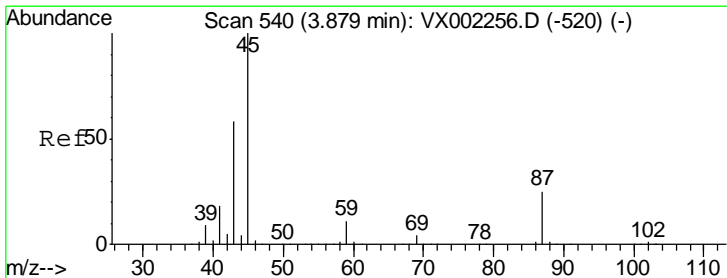
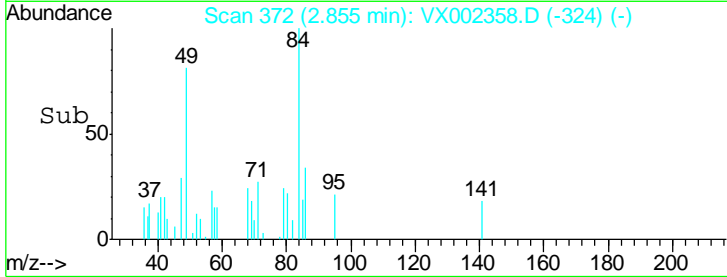
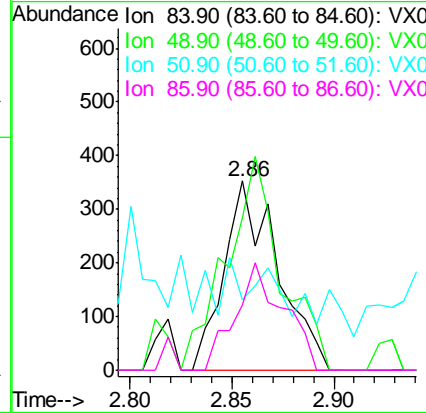
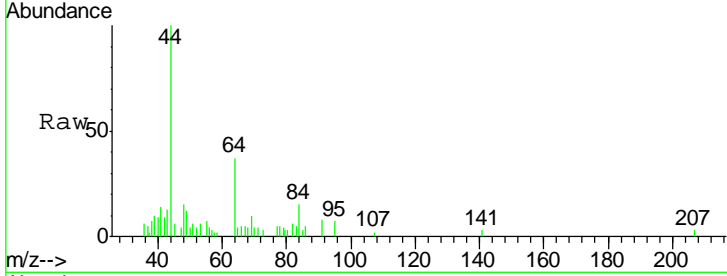




#20
Methylene Chloride
Concen: Below Cal
RT: 2.86 min Scan# 372
Delta R.T. -0.01 min
Lab File: VX002358.D
Acq: 06 Jun 2018 17:42

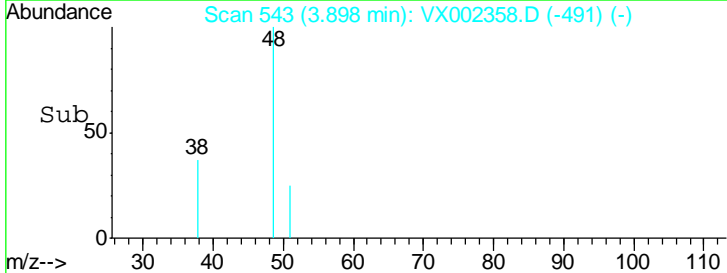
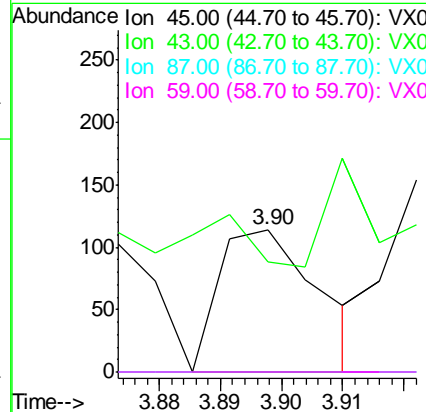
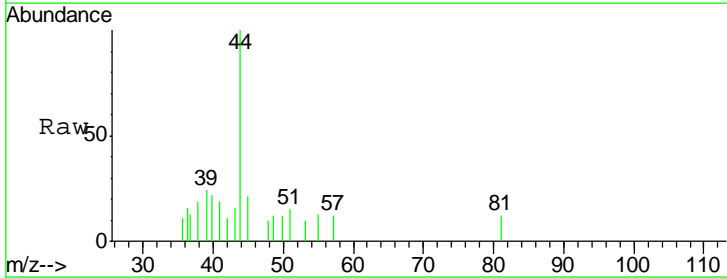
Instrument :
MSVOA_X
ClientSampled :
W-17

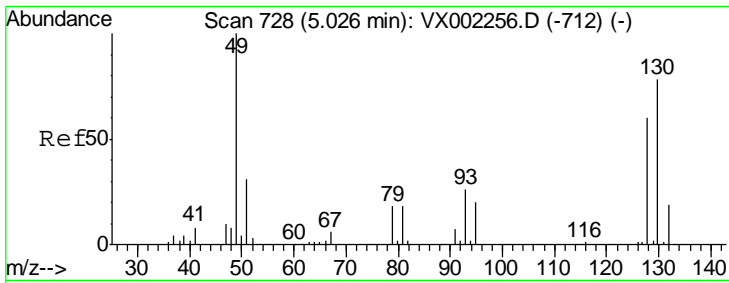
Tgt Ion	Resp	Lower	Upper
84	100		
49	81.0	107.8	161.6#
51	6.8	32.8	49.2#
86	34.4	52.5	78.7#



#22
Diisopropyl ether
Concen: Below Cal
RT: 3.90 min Scan# 543
Delta R.T. 0.02 min
Lab File: VX002358.D
Acq: 06 Jun 2018 17:42

Tgt Ion	Resp	Lower	Upper
45	100		
43	0.0	46.8	70.2#
87	0.0	20.2	30.4#
59	0.0	8.7	13.1#

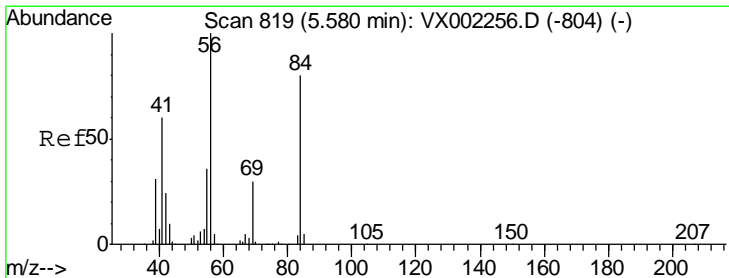
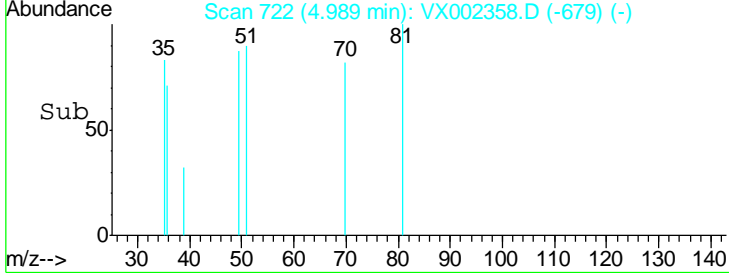
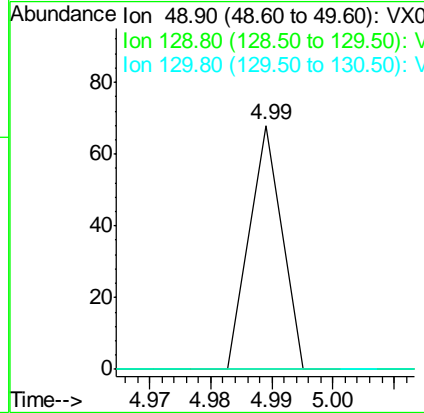
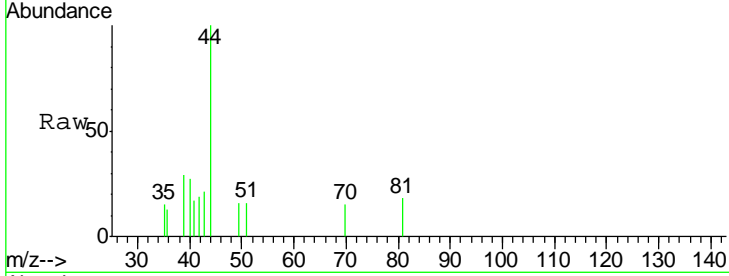




#28
 Bromochloromethane
 Concen: Below Cal
 RT: 4.99 min Scan# 722
 Delta R.T. -0.04 min
 Lab File: VX002358.D
 Acq: 06 Jun 2018 17:42

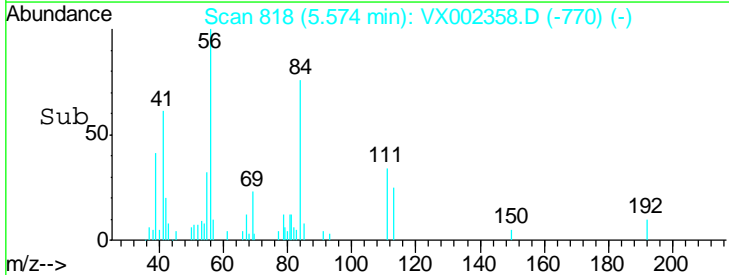
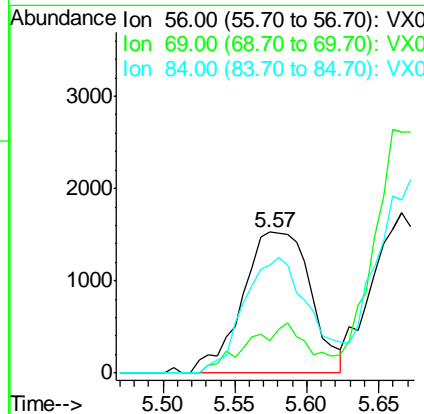
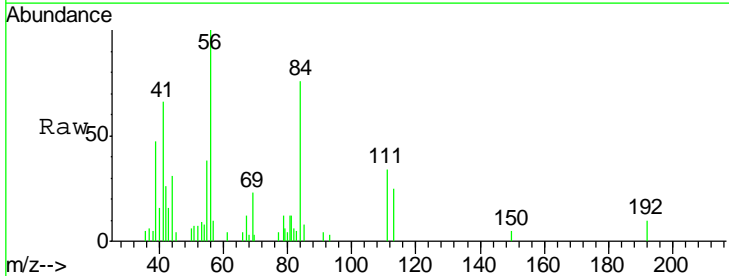
Instrument : MSVOA_X
 ClientSampled : W-17

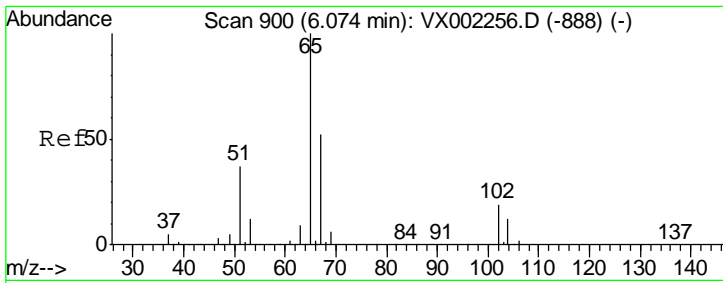
Tgt Ion	Resp	Lower	Upper
49	100		
129	0.0	0.0	4.2
130	0.0	61.2	91.8#



#31
 Cyclohexane
 Concen: 1.19 ug/l
 RT: 5.57 min Scan# 818
 Delta R.T. -0.01 min
 Lab File: VX002358.D
 Acq: 06 Jun 2018 17:42

Tgt Ion	Resp	Lower	Upper
56	100		
69	26.2	23.7	35.5
84	76.3	64.1	96.1

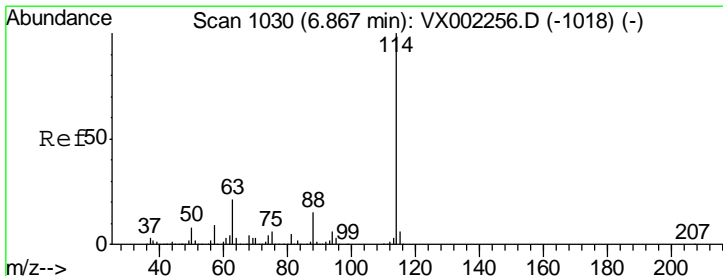
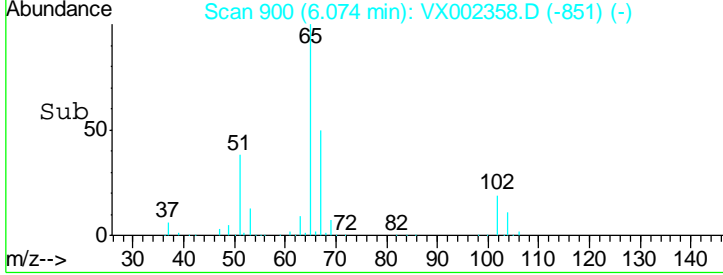
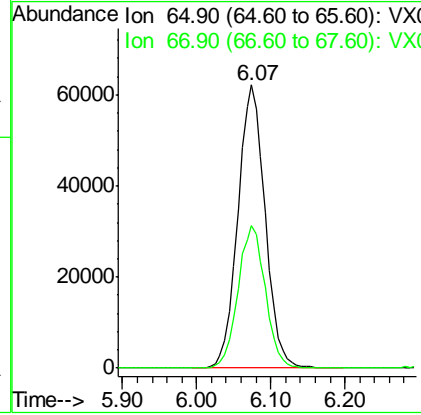
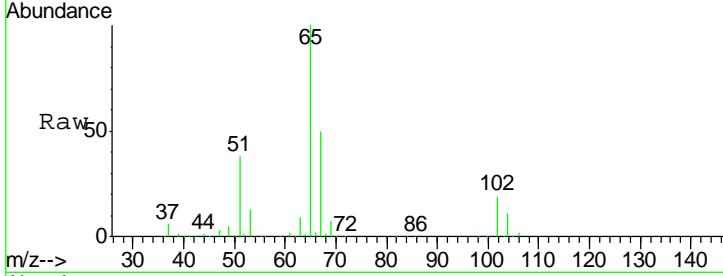




#33
 1,2-Dichloroethane-d4
 Concen: 47.41 ug/l
 RT: 6.07 min Scan# 900
 Delta R.T. 0.00 min
 Lab File: VX002358.D
 Acq: 06 Jun 2018 17:42

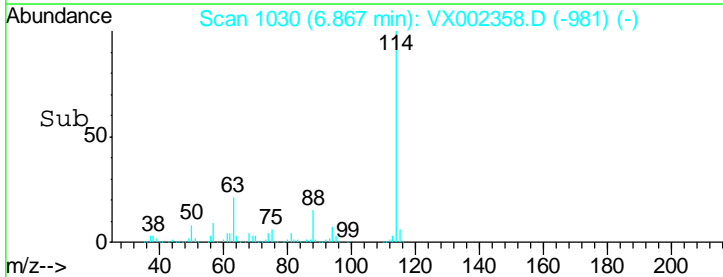
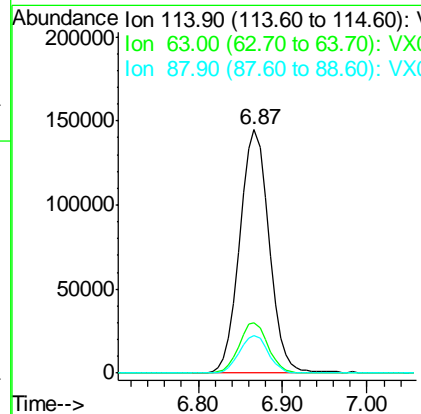
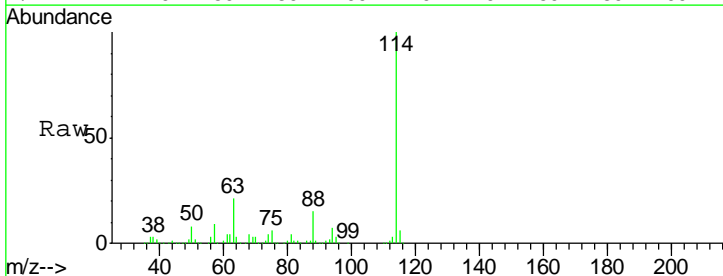
Instrument : MSVOA_X
 ClientSampled : W-17

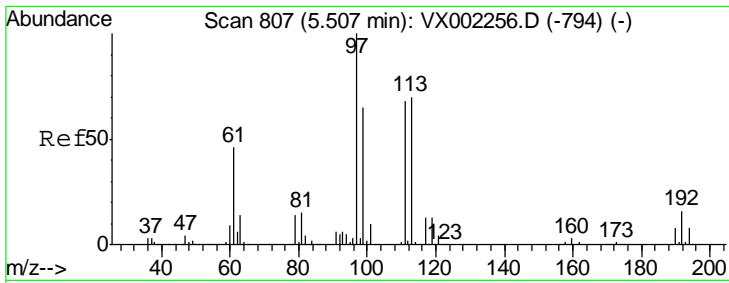
Tgt Ion	Resp	Lower	Upper
65	159485		
67	50.6	0.0	102.6



#34
 1,4-Difluorobenzene
 Concen: 50.00 ug/l
 RT: 6.87 min Scan# 1030
 Delta R.T. 0.00 min
 Lab File: VX002358.D
 Acq: 06 Jun 2018 17:42

Tgt Ion	Resp	Lower	Upper
114	340732		
63	20.6	0.0	41.4
88	15.4	0.0	30.0

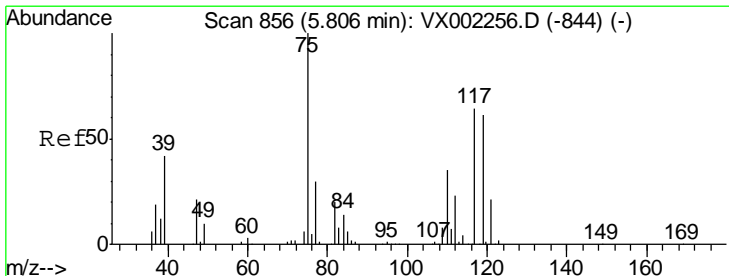
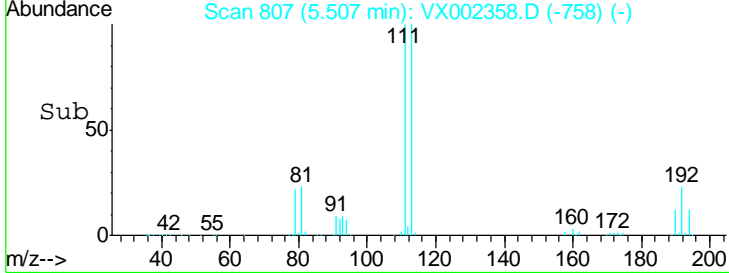
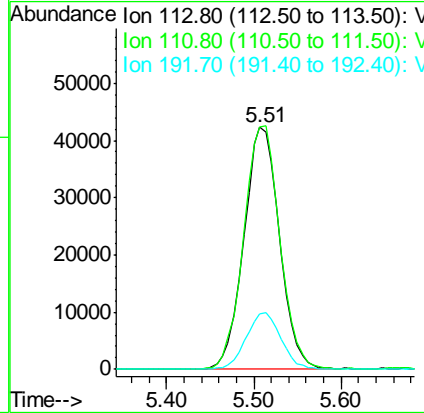
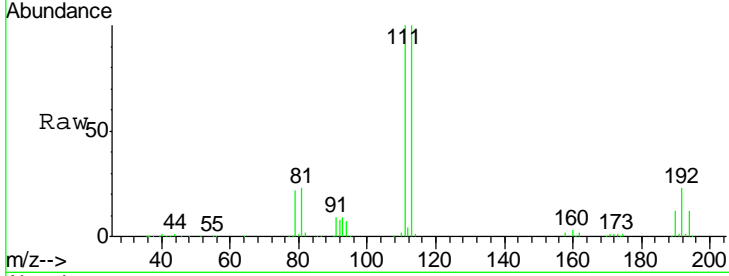




#35
 Dibromofluoromethane
 Concen: 44.64 ug/l
 RT: 5.51 min Scan# 807
 Delta R.T. 0.00 min
 Lab File: VX002358.D
 Acq: 06 Jun 2018 17:42

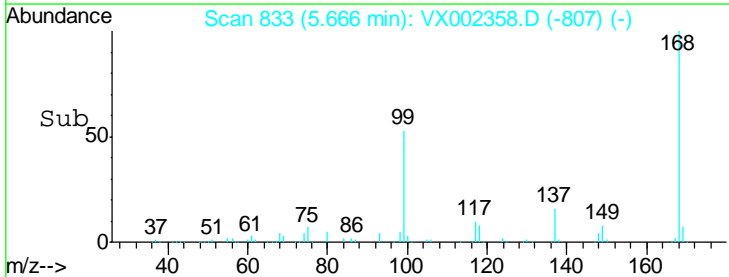
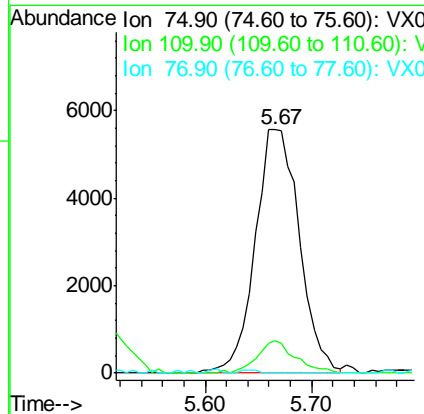
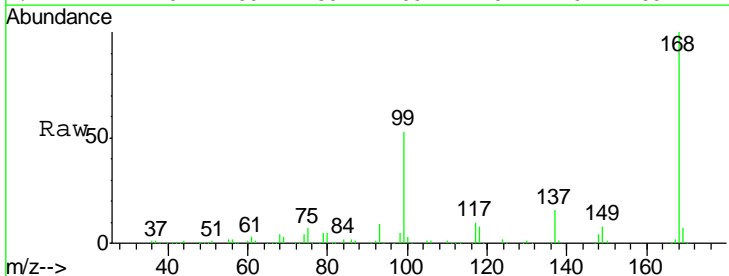
Instrument : MSVOA_X
 ClientSampled : W-17

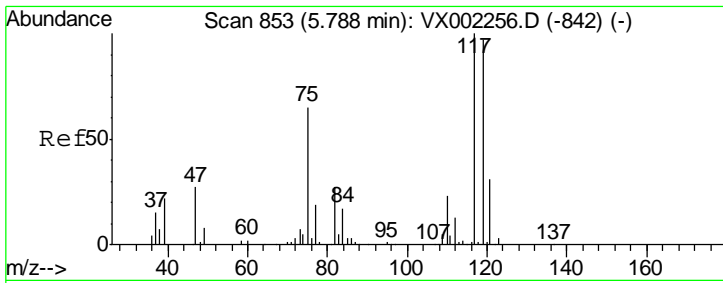
Tgt Ion	Resp	Lower	Upper
113	119610		
111	102.2	81.4	122.0
192	23.1	19.1	28.7



#36
 1,1-Dichloropropene
 Concen: 4.50 ug/l
 RT: 5.67 min Scan# 833
 Delta R.T. -0.14 min
 Lab File: VX002358.D
 Acq: 06 Jun 2018 17:42

Tgt Ion	Resp	Lower	Upper
75	16117		
110	11.6	18.1	54.4#
77	0.0	24.3	36.5#

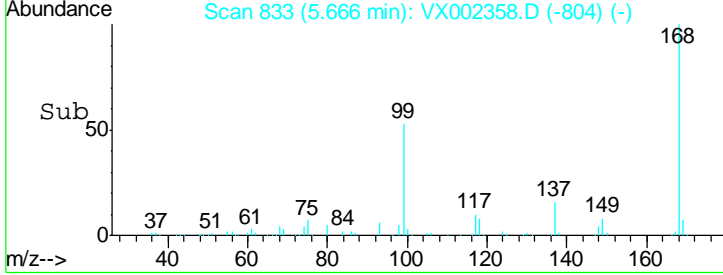
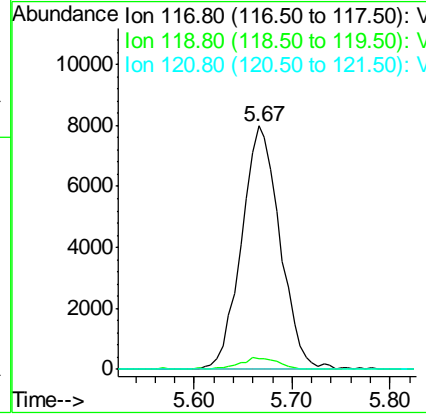
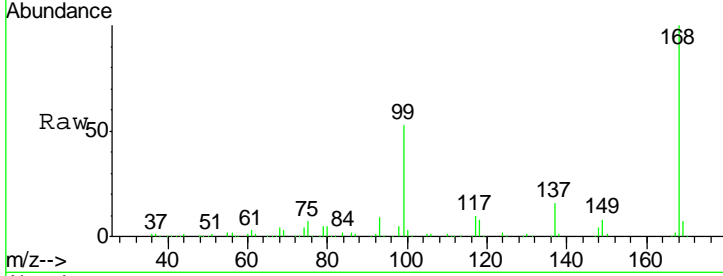




#38
 Carbon Tetrachloride
 Concen: 5.80 ug/l
 RT: 5.67 min Scan# 833
 Delta R.T. -0.12 min
 Lab File: VX002358.D
 Acq: 06 Jun 2018 17:42

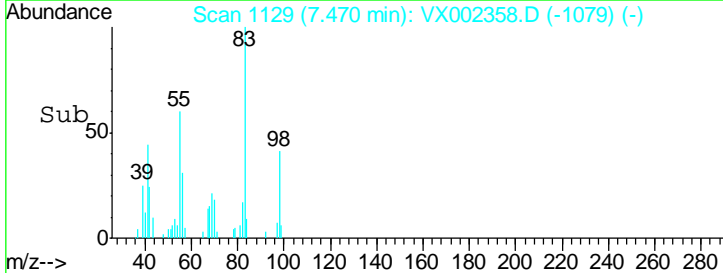
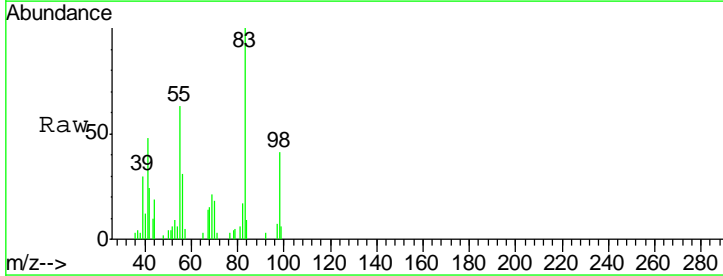
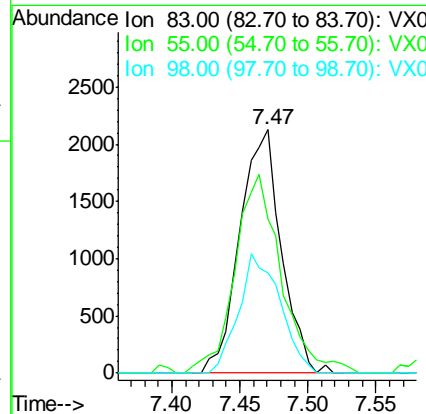
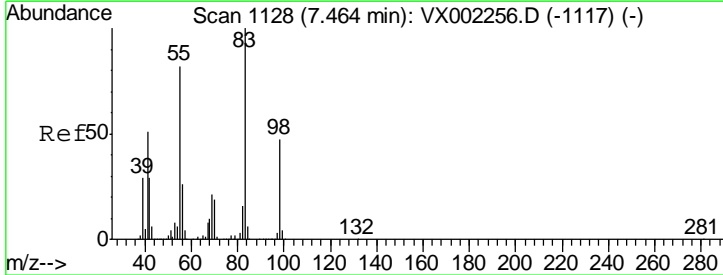
Instrument :
 MSVOA_X
ClientSampled :
 W-17

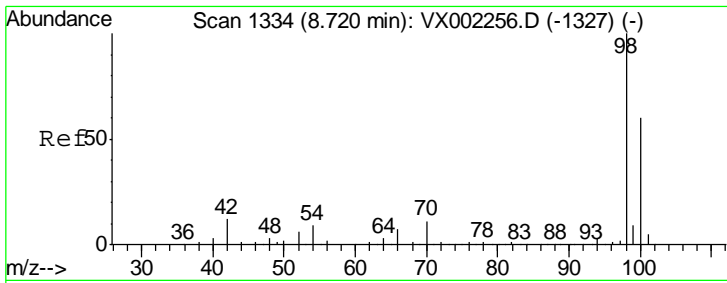
Tgt Ion	Resp	Lower	Upper
117	100		
119	4.5	77.4	116.0#
121	0.0	24.4	36.6#



#39
 Methylcyclohexane
 Concen: 1.28 ug/l
 RT: 7.47 min Scan# 1129
 Delta R.T. 0.01 min
 Lab File: VX002358.D
 Acq: 06 Jun 2018 17:42

Tgt Ion	Resp	Lower	Upper
83	100		
55	60.3	65.4	98.0#
98	41.3	37.4	56.0

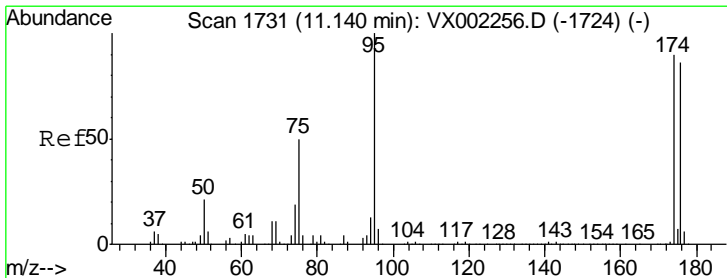
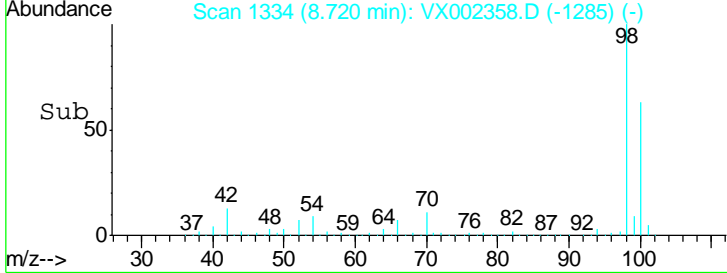
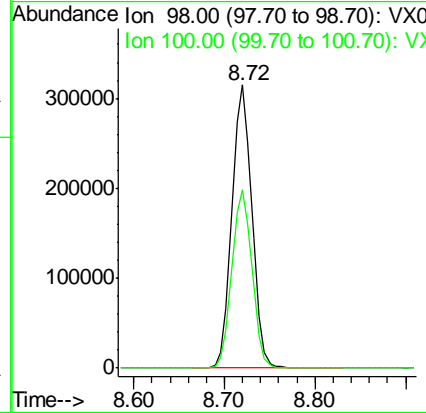
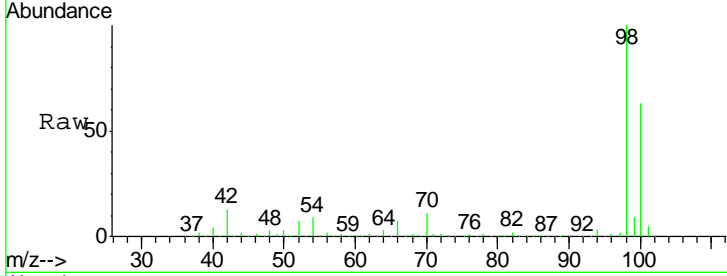




#50
 Toluene-d8
 Concen: 47.08 ug/l
 RT: 8.72 min Scan# 1334
 Delta R.T. 0.00 min
 Lab File: VX002358.D
 Acq: 06 Jun 2018 17:42

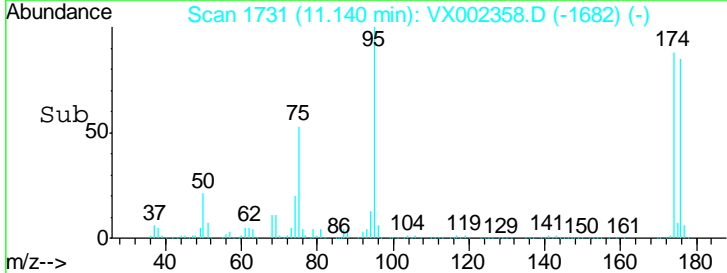
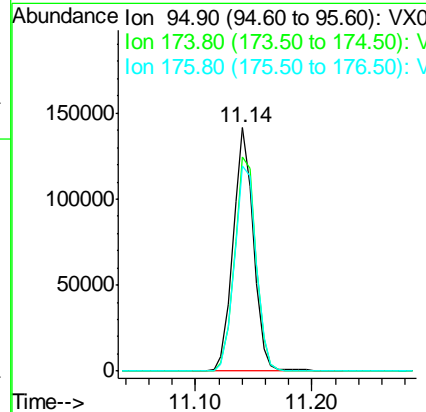
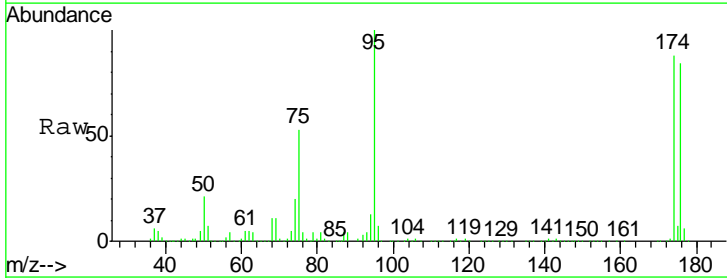
Instrument :
 MSVOA_X
 ClientSampled :
 W-17

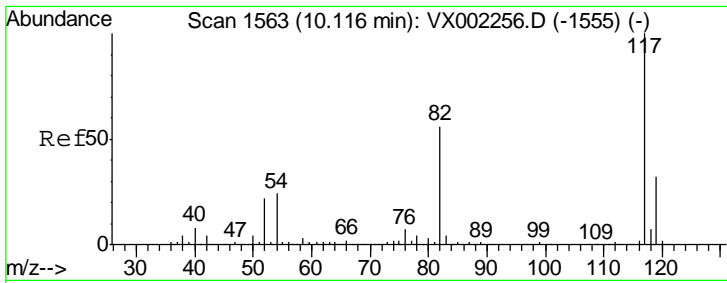
Tgt Ion	Resp	Lower	Upper
98	483511		
98	100		
100	63.3	50.9	76.3



#62
 4-Bromofluorobenzene
 Concen: 43.19 ug/l
 RT: 11.14 min Scan# 1731
 Delta R.T. 0.00 min
 Lab File: VX002358.D
 Acq: 06 Jun 2018 17:42

Tgt Ion	Resp	Lower	Upper
95	171069		
95	100		
174	93.0	0.0	187.4
176	90.5	0.0	181.0

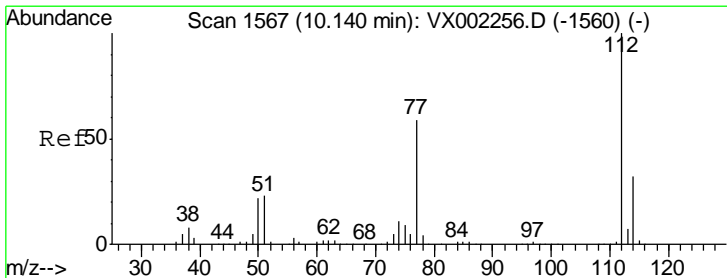
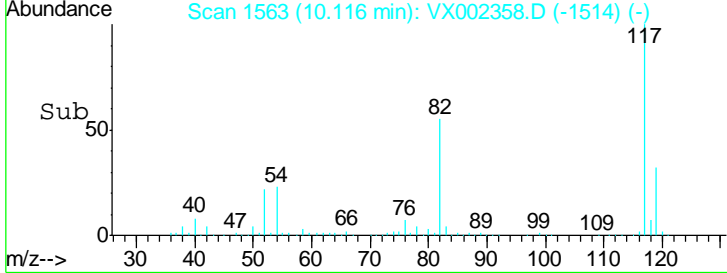
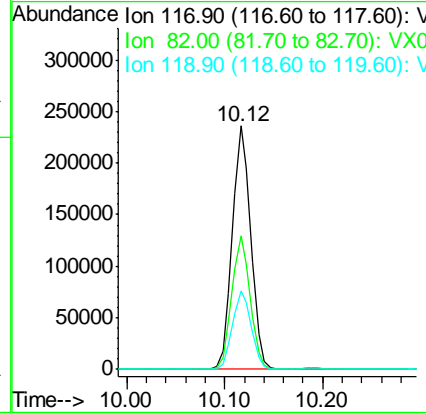
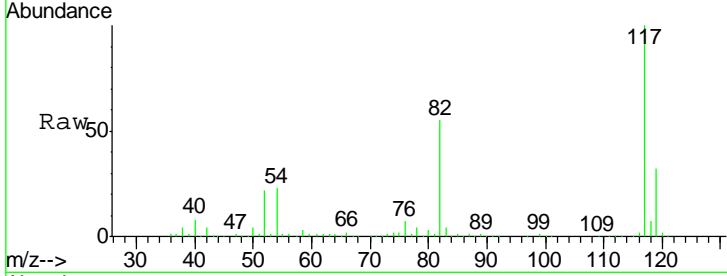




#63
 Chlorobenzene-d5
 Concen: 50.00 ug/l
 RT: 10.12 min Scan# 1563
 Delta R.T. 0.00 min
 Lab File: VX002358.D
 Acq: 06 Jun 2018 17:42

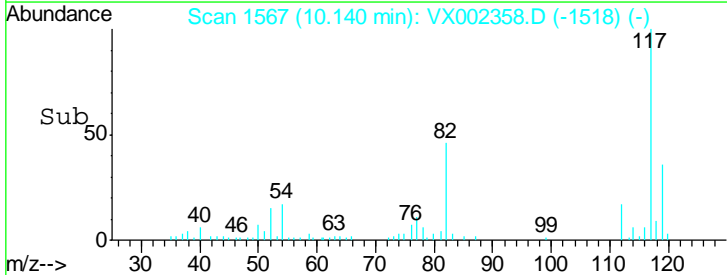
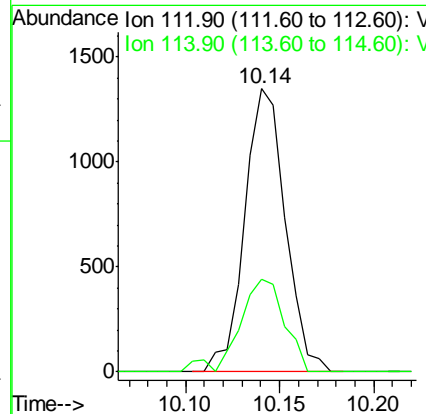
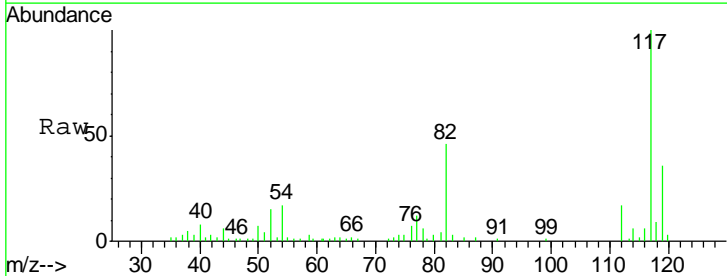
Instrument : MSVOA_X
 ClientSampled : W-17

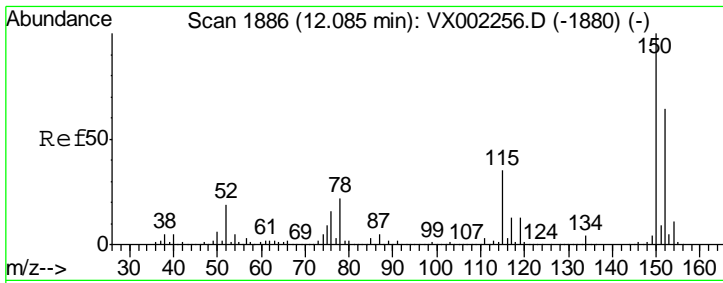
Tgt Ion	Resp	Lower	Upper
117	100		
82	55.0	45.0	67.4
119	32.0	25.8	38.6



#65
 Chlorobenzene
 Concen: 0.26 ug/l
 RT: 10.14 min Scan# 1567
 Delta R.T. 0.00 min
 Lab File: VX002358.D
 Acq: 06 Jun 2018 17:42

Tgt Ion	Resp	Lower	Upper
112	100		
114	32.7	25.3	37.9

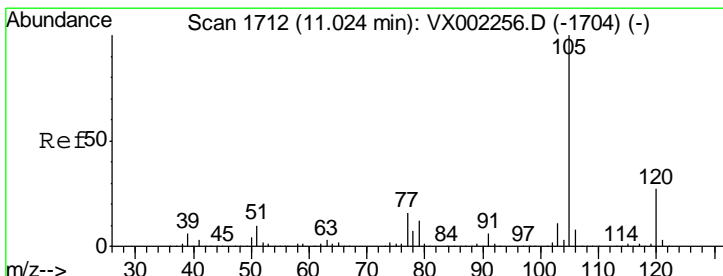
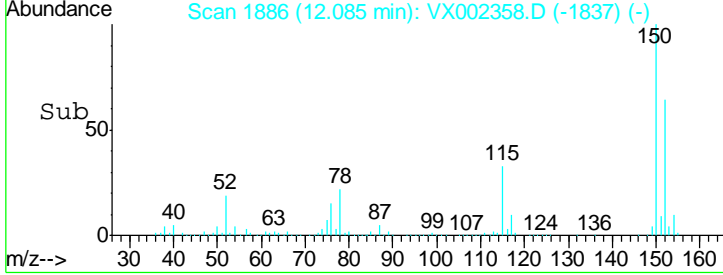
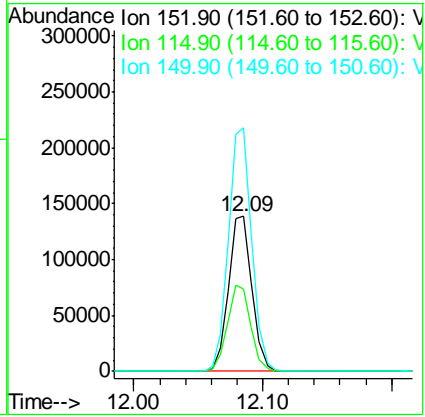
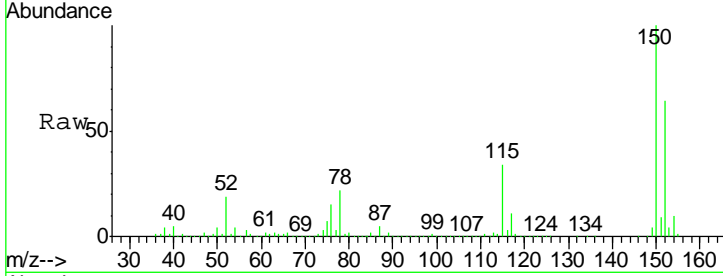




#72
 1,4-Dichlorobenzene-d4
 Concen: 50.00 ug/l
 RT: 12.09 min Scan# 1886
 Delta R.T. 0.00 min
 Lab File: VX002358.D
 Acq: 06 Jun 2018 17:42

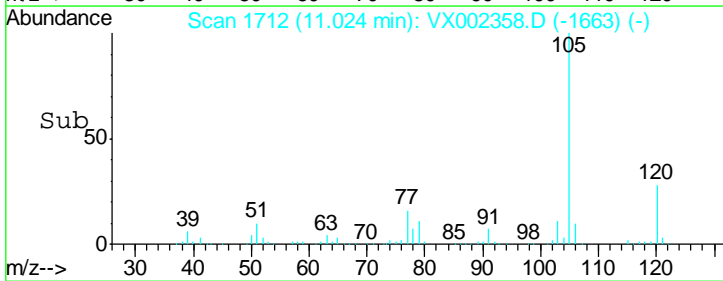
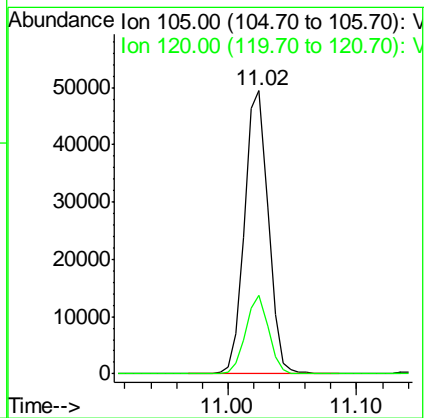
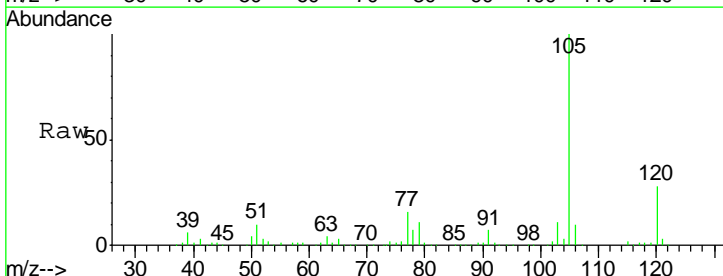
Instrument : MSVOA_X
 ClientSampled : W-17

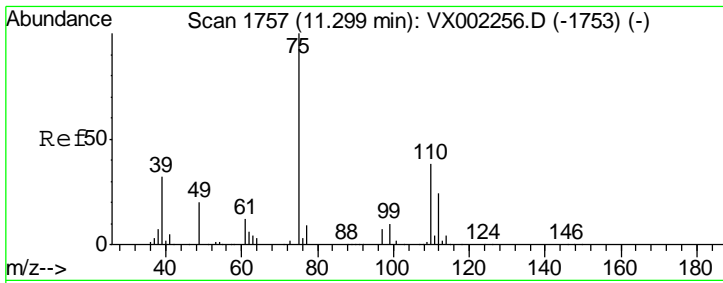
Tgt Ion	Resp	Lower	Upper
152	100		
115	55.7	40.1	120.2
150	156.9	0.0	347.2



#73
 Isopropylbenzene
 Concen: 5.10 ug/l
 RT: 11.02 min Scan# 1712
 Delta R.T. 0.00 min
 Lab File: VX002358.D
 Acq: 06 Jun 2018 17:42

Tgt Ion	Resp	Lower	Upper
105	100		
120	26.8	13.5	40.4

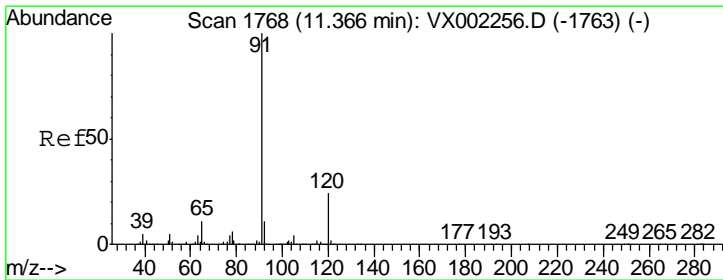
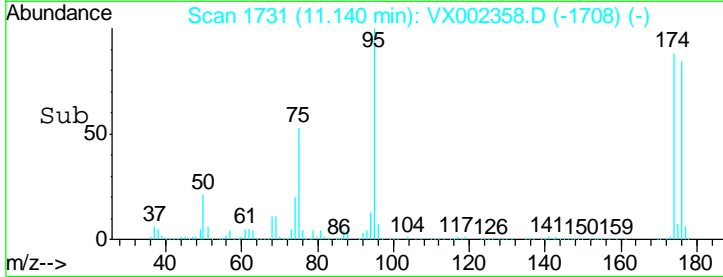
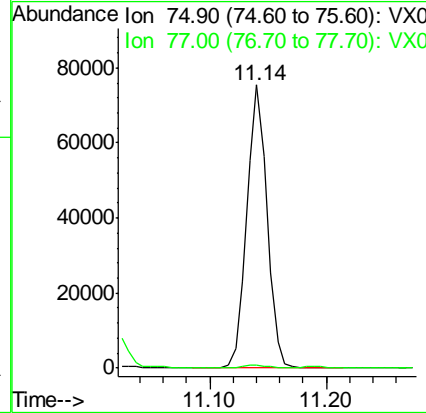
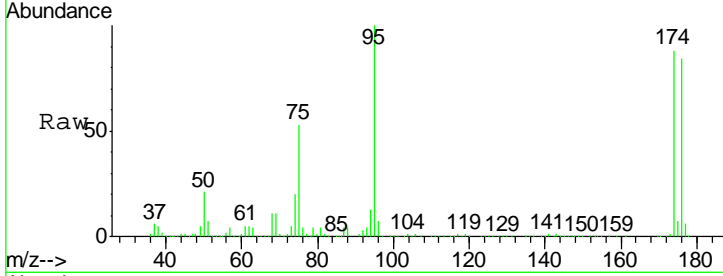




#76
 1,2,3-Trichloropropane
 Concen: 23.68 ug/l
 RT: 11.14 min Scan# 1731
 Delta R.T. -0.16 min
 Lab File: VX002358.D
 Acq: 06 Jun 2018 17:42

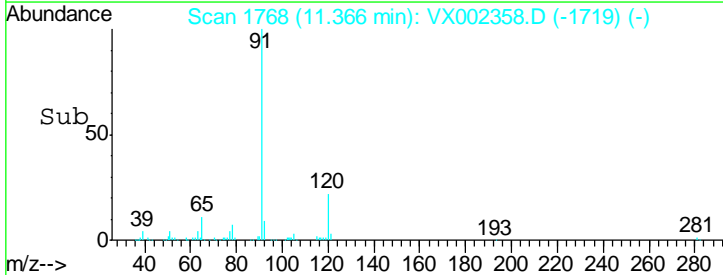
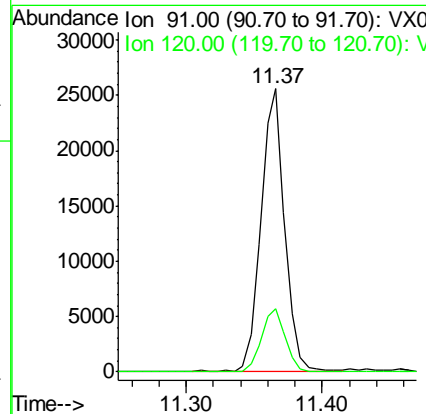
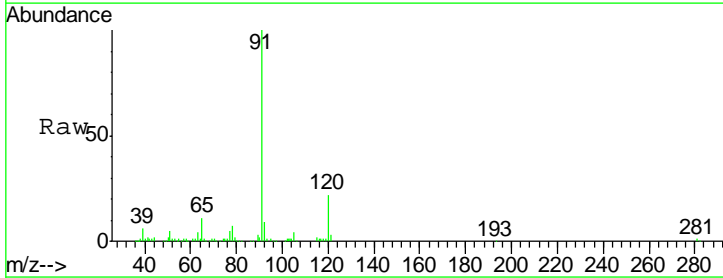
Instrument : MSVOA_X
 ClientSampled : W-17

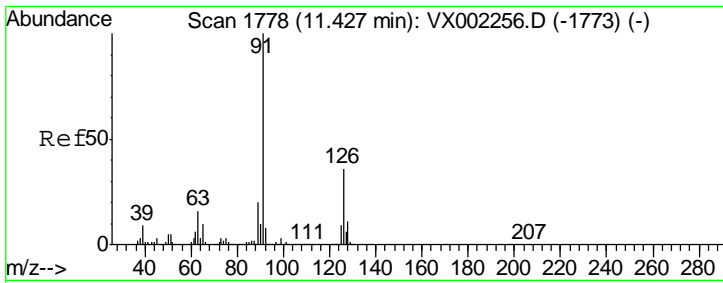
Tgt Ion: 75 Resp: 91862
 Ion Ratio Lower Upper
 75 100
 77 1.0 22.8 68.3#



#78
 n-propylbenzene
 Concen: 2.30 ug/l
 RT: 11.37 min Scan# 1768
 Delta R.T. 0.00 min
 Lab File: VX002358.D
 Acq: 06 Jun 2018 17:42

Tgt Ion: 91 Resp: 31432
 Ion Ratio Lower Upper
 91 100
 120 22.5 11.8 35.4

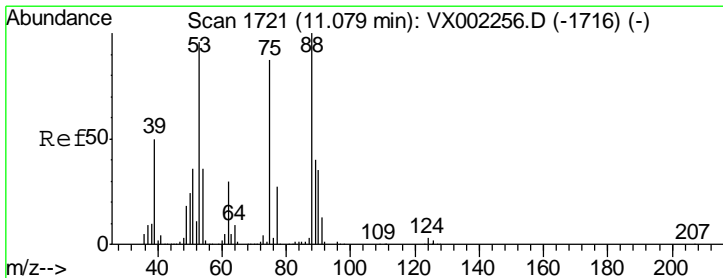
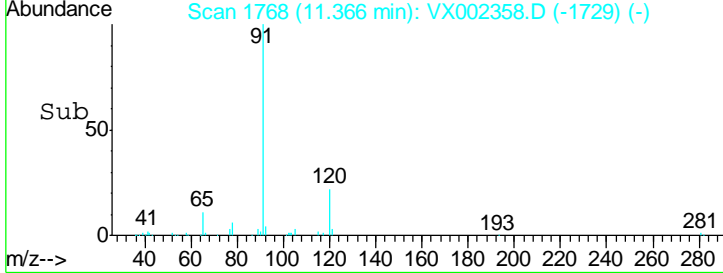
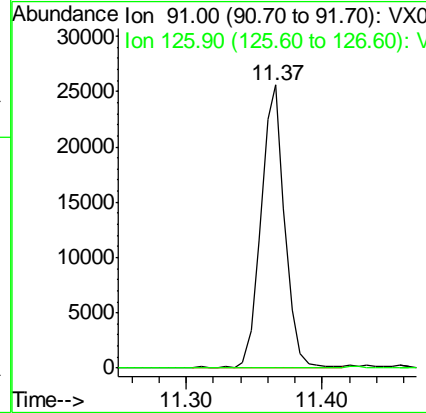
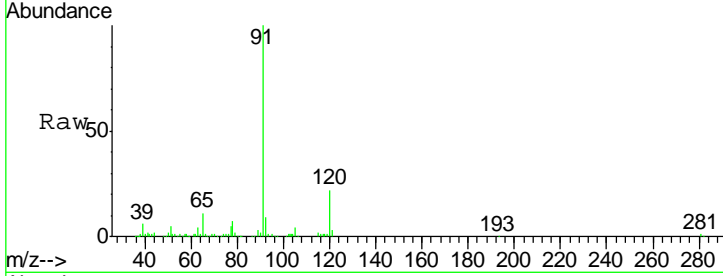




#79
 2-Chlorotoluene
 Concen: 3.64 ug/l
 RT: 11.37 min Scan# 1768
 Delta R.T. -0.06 min
 Lab File: VX002358.D
 Acq: 06 Jun 2018 17:42

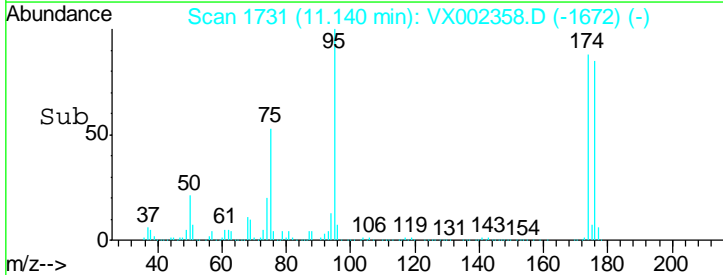
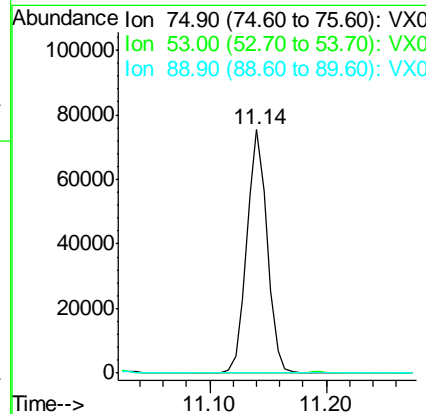
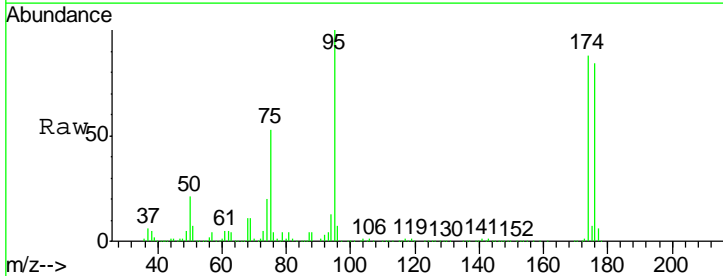
Instrument :
 MSVOA_X
 ClientSampled :
 W-17

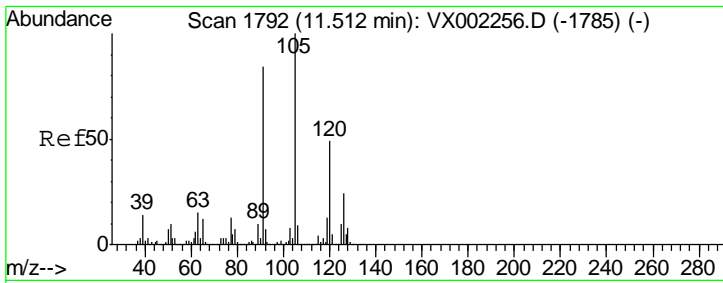
Tgt Ion: 91 Resp: 31432
 Ion Ratio Lower Upper
 91 100
 126 0.0 17.7 53.1#



#81
 trans-1,4-Dichloro-2-butene
 Concen: 83.02 ug/l
 RT: 11.14 min Scan# 1731
 Delta R.T. 0.06 min
 Lab File: VX002358.D
 Acq: 06 Jun 2018 17:42

Tgt Ion: 75 Resp: 91862
 Ion Ratio Lower Upper
 75 100
 53 0.1 86.8 130.2#
 89 0.0 38.2 57.2#

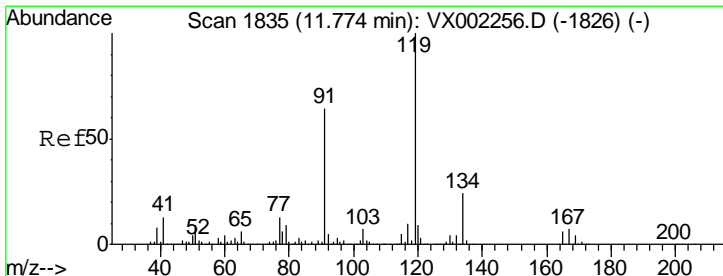
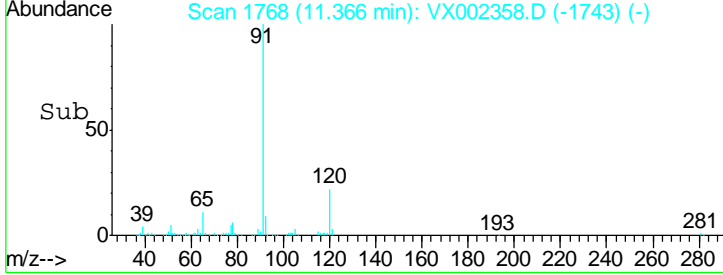
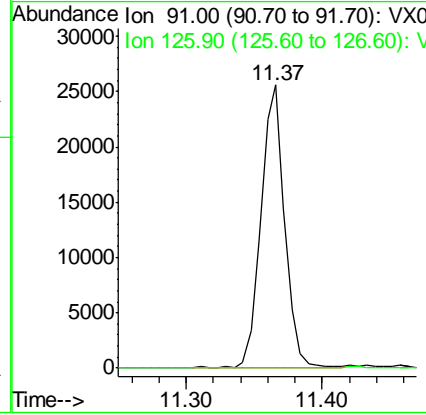
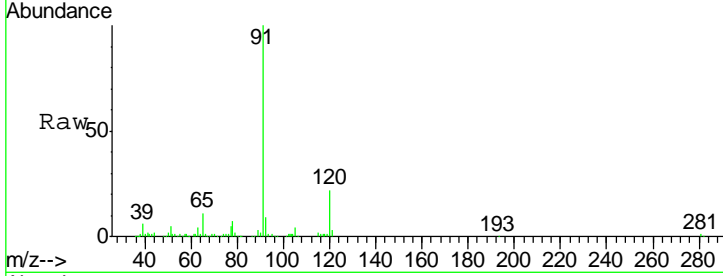




#82
 4-Chlorotoluene
 Concen: 3.16 ug/l
 RT: 11.37 min Scan# 1768
 Delta R.T. -0.15 min
 Lab File: VX002358.D
 Acq: 06 Jun 2018 17:42

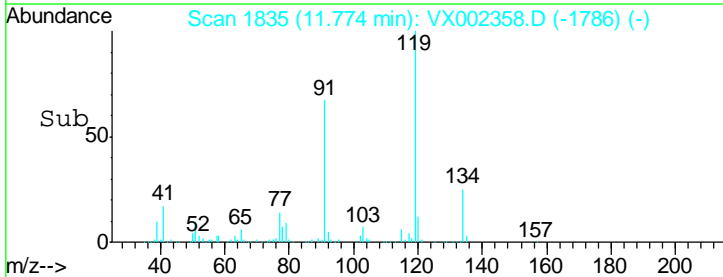
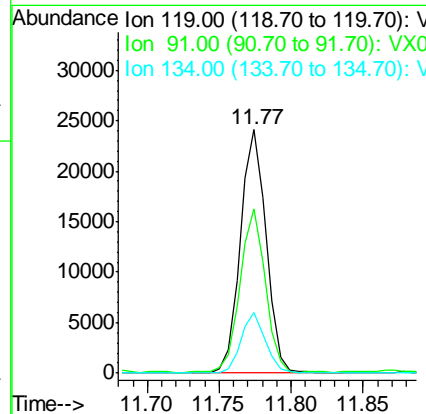
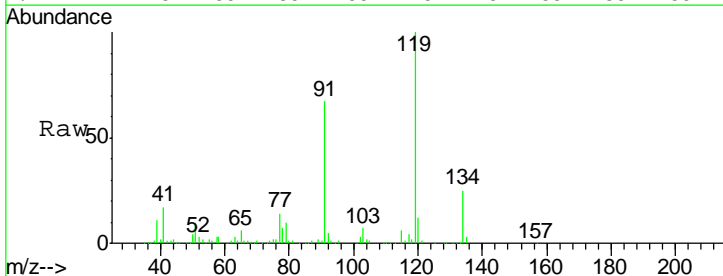
Instrument : MSVOA_X
 ClientSampled : W-17

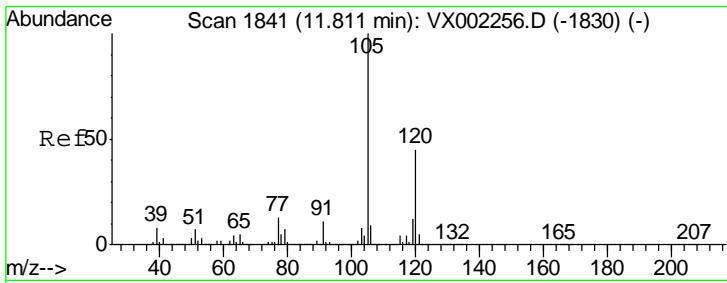
Tgt Ion	Resp	Lower	Upper
91	100		
126	0.0	15.4	46.4#



#83
 tert-Butylbenzene
 Concen: 2.93 ug/l
 RT: 11.77 min Scan# 1835
 Delta R.T. 0.00 min
 Lab File: VX002358.D
 Acq: 06 Jun 2018 17:42

Tgt Ion	Resp	Lower	Upper
119	100		
91	66.2	30.3	90.9
134	23.6	11.7	35.1

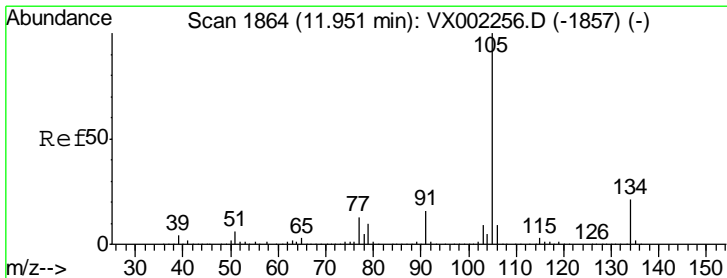
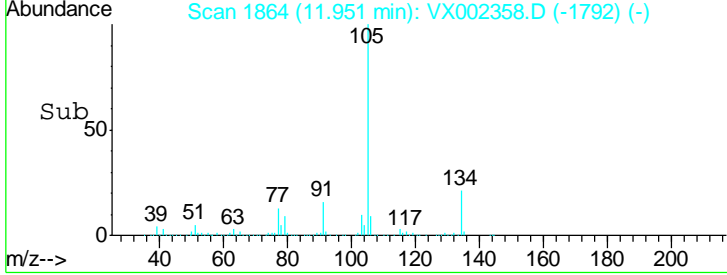
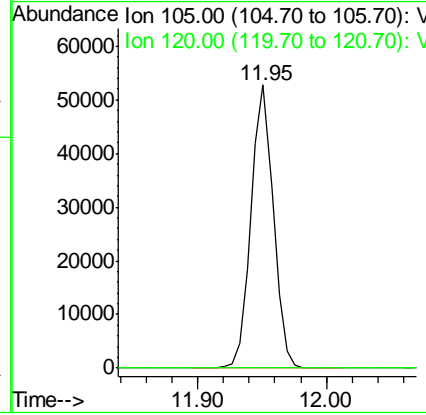
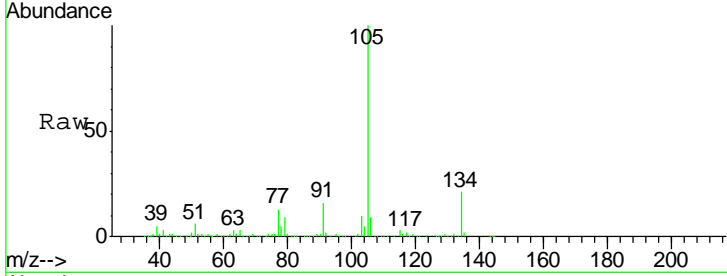




#84
 1,2,4-Trimethylbenzene
 Concen: 5.76 ug/l
 RT: 11.95 min Scan# 1864
 Delta R.T. 0.14 min
 Lab File: VX002358.D
 Acq: 06 Jun 2018 17:42

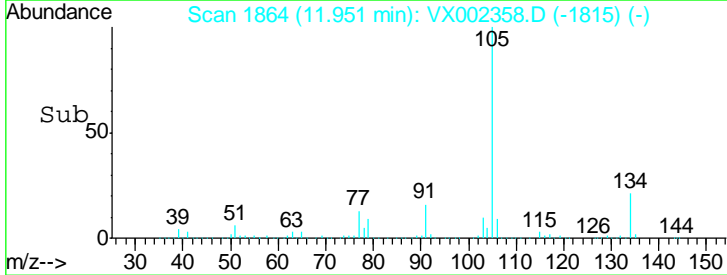
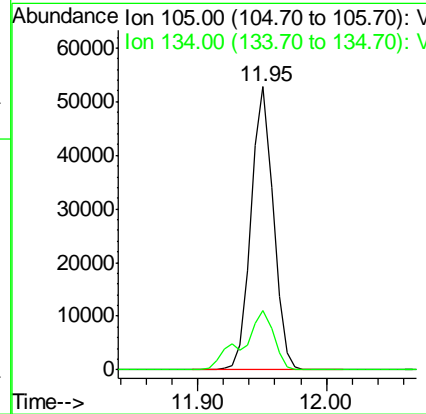
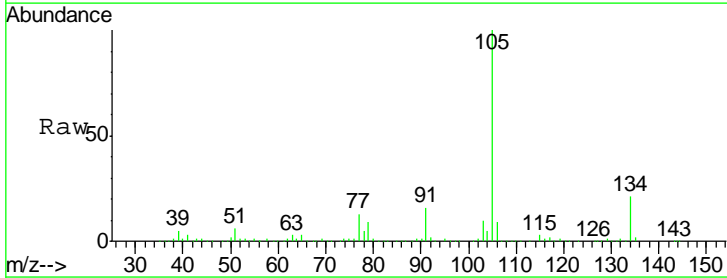
Instrument :
 MSVOA_X
 ClientSampled :
 W-17

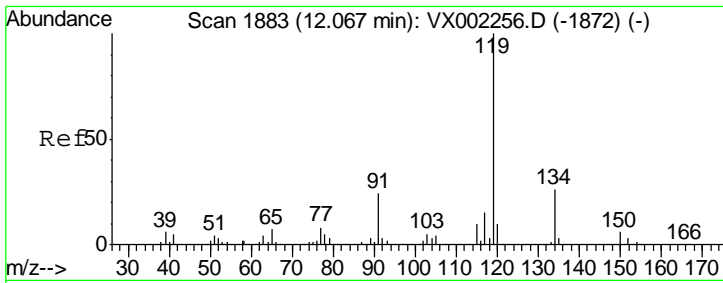
Tgt Ion:105 Resp: 62520
 Ion Ratio Lower Upper
 105 100
 120 0.2 22.3 66.8#



#85
 sec-Butylbenzene
 Concen: 5.19 ug/l
 RT: 11.95 min Scan# 1864
 Delta R.T. 0.00 min
 Lab File: VX002358.D
 Acq: 06 Jun 2018 17:42

Tgt Ion:105 Resp: 62520
 Ion Ratio Lower Upper
 105 100
 134 29.7 10.4 31.1

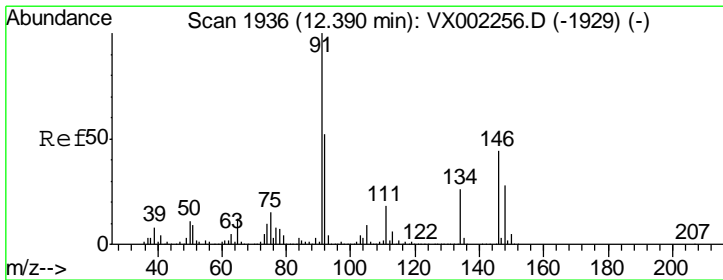
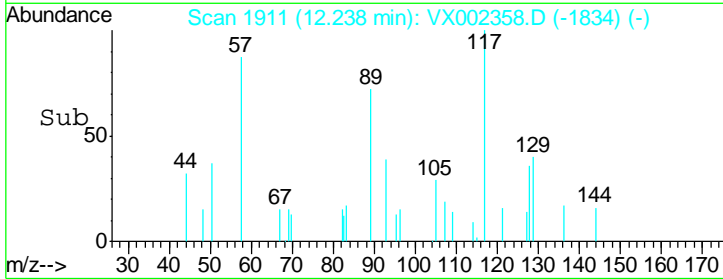
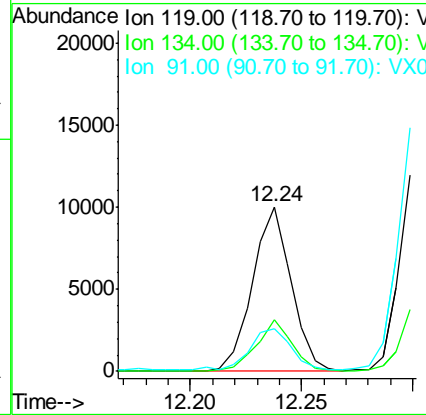
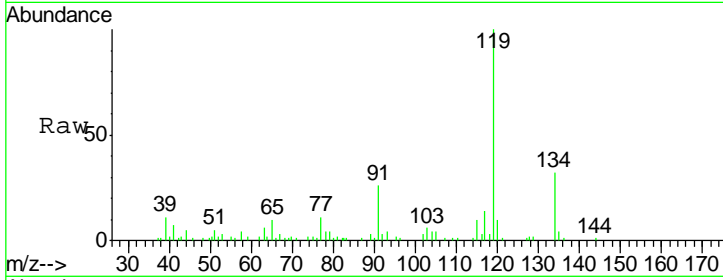




#86
 p-Isopropyltoluene
 Concen: 1.11 ug/l
 RT: 12.24 min Scan# 1911
 Delta R.T. 0.17 min
 Lab File: VX002358.D
 Acq: 06 Jun 2018 17:42

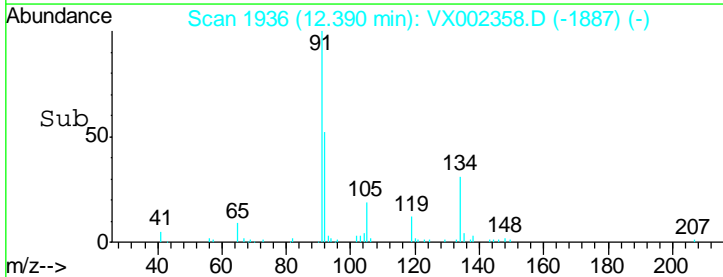
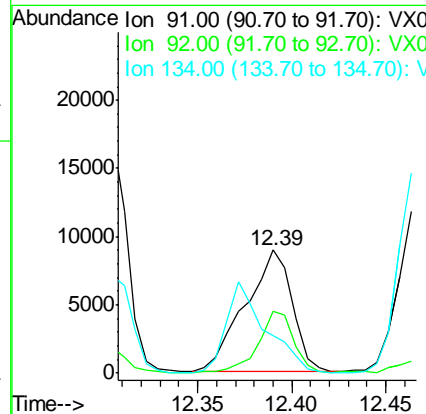
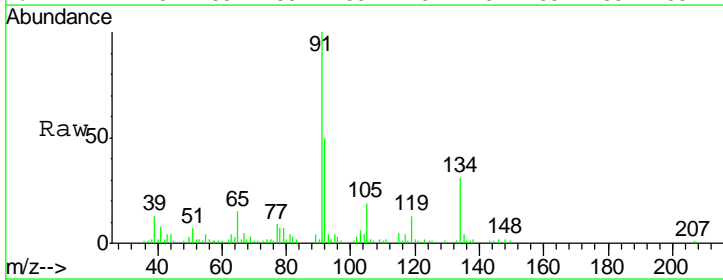
Instrument :
 MSVOA_X
 ClientSampled :
 W-17

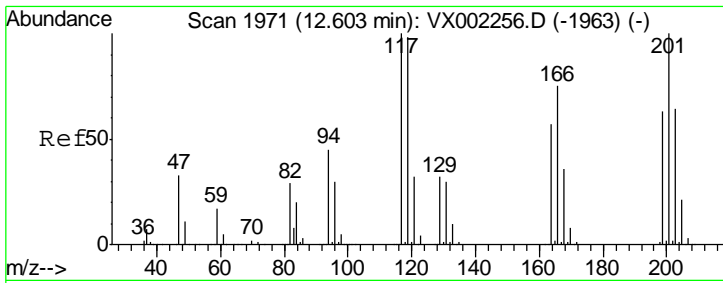
Tgt Ion	Resp	Lower	Upper
119	12131		
134	29.1	13.4	40.1
91	26.9	11.9	35.7



#89
 n-Butylbenzene
 Concen: 1.69 ug/l
 RT: 12.39 min Scan# 1936
 Delta R.T. 0.00 min
 Lab File: VX002358.D
 Acq: 06 Jun 2018 17:42

Tgt Ion	Resp	Lower	Upper
91	15558		
92	38.8	26.0	78.0
134	63.5	13.5	40.5#

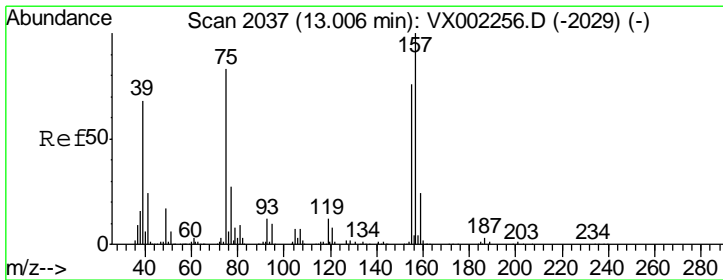
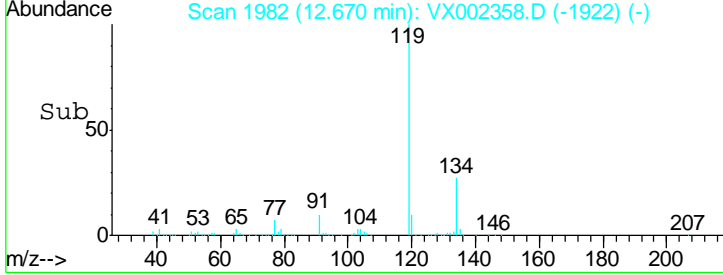
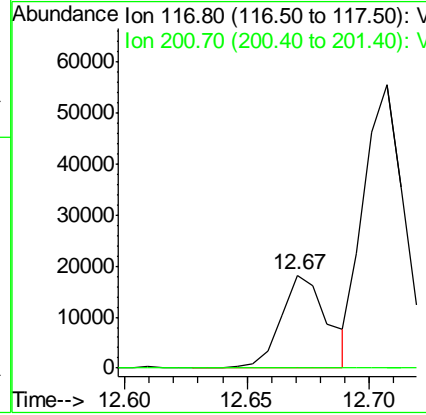
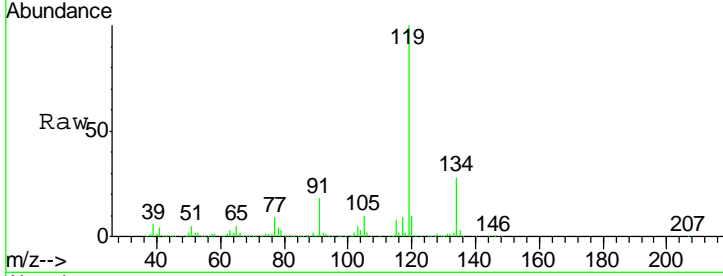




#90
 Hexachloroethane
 Concen: 13.60 ug/l
 RT: 12.67 min Scan# 1982
 Delta R.T. 0.07 min
 Lab File: VX002358.D
 Acq: 06 Jun 2018 17:42

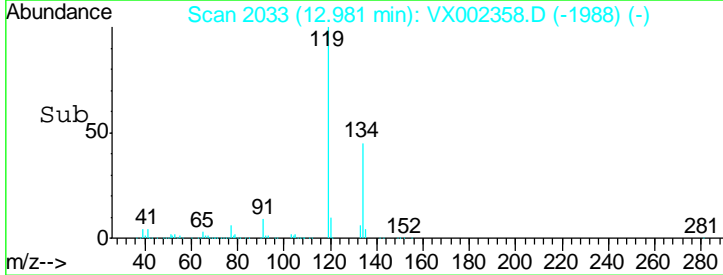
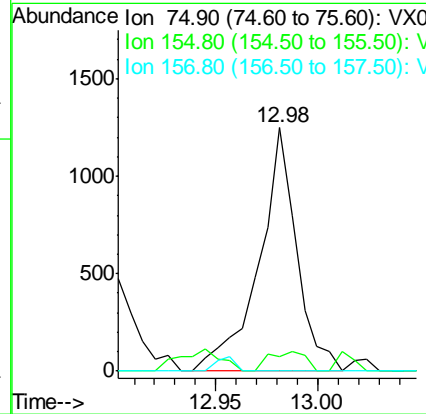
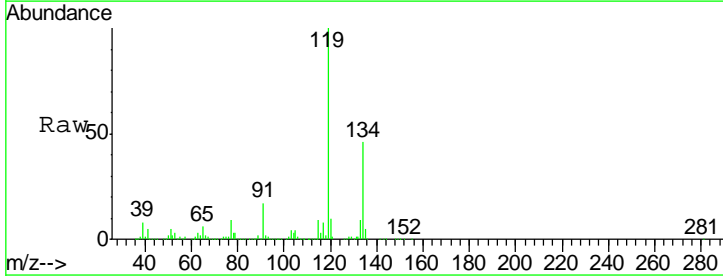
Instrument : MSVOA_X
 ClientSampled : W-17

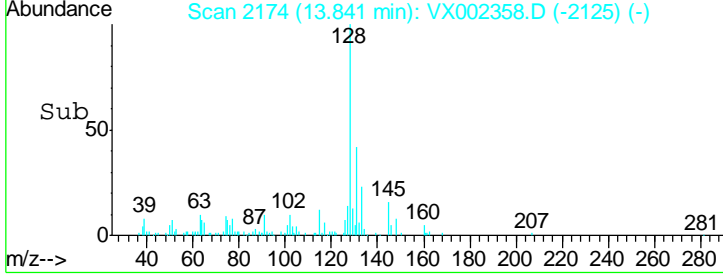
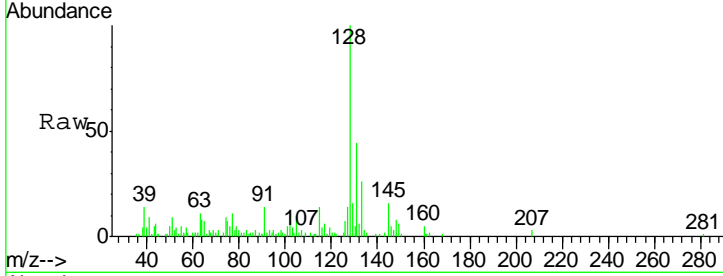
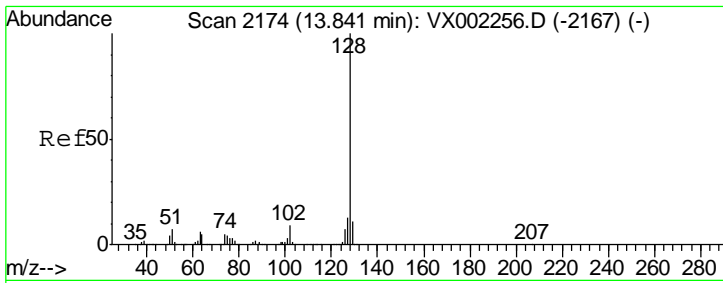
Tgt Ion: 117 Resp: 23805
 Ion Ratio Lower Upper
 117 100
 201 0.0 49.0 147.0#



#92
 1,2-Dibromo-3-Chloropropane
 Concen: 1.90 ug/l
 RT: 12.98 min Scan# 2033
 Delta R.T. -0.02 min
 Lab File: VX002358.D
 Acq: 06 Jun 2018 17:42

Tgt Ion: 75 Resp: 1605
 Ion Ratio Lower Upper
 75 100
 155 7.7 45.8 137.4#
 157 0.0 60.1 180.3#





#95
 Naphthalene
 Concen: 0.97 ug/l
 RT: 13.84 min Scan# 2174
 Delta R.T. 0.00 min
 Lab File: VX002358.D
 Acq: 06 Jun 2018 17:42

Instrument :
 MSVOA_X
 ClientSampled :
 W-17

Tot Ion	128	Resp	12513
Ion Ratio	Lower	Upper	
128	100		
127	10.1	10.4	15.6#
129	0.0	8.6	13.0#

