

Data Path : Z:\VOASRV\HPCHEM1\MSVOA X\DATA\VX060618\  
 Data File : VX002362.D  
 Acq On : 06 Jun 2018 19:29  
 Operator : JC/MD  
 Sample : J3312-05  
 Misc : 5.0mL/MSVOA X/WATER  
 ALS Vial : 21 Sample Multiplier: 1

Instrument :  
 MSVOA\_X  
 ClientSampled :  
 PW-01

Quant Time: Jun 07 03:26:04 2018  
 Quant Method : Z:\VOASRV\HPCHEM1\MSVOA\_X\METHOD\82X060418W.M  
 Quant Title : SW846 8260  
 QLast Update : Tue Jun 05 03:22:35 2018  
 Response via : Initial Calibration

Internal Standards	R.T.	QIon	Response	Conc	Units	Dev(Min)
1) Pentafluorobenzene	5.67	168	235786	50.00	ug/l	0.00
34) 1,4-Difluorobenzene	6.87	114	352117	50.00	ug/l	0.00
63) Chlorobenzene-d5	10.12	117	324641	50.00	ug/l	0.00
72) 1,4-Dichlorobenzene-d4	12.09	152	185095	50.00	ug/l	0.00

## System Monitoring Compounds

33) 1,2-Dichloroethane-d4	6.07	65	163672	48.43	ug/l	0.00
Spiked Amount	50.000		Recovery	=	96.86%	
35) Dibromofluoromethane	5.51	113	122757	44.33	ug/l	0.00
Spiked Amount	50.000		Recovery	=	88.66%	
50) Toluene-d8	8.72	98	499325	47.05	ug/l	0.00
Spiked Amount	50.000		Recovery	=	94.10%	
62) 4-Bromofluorobenzene	11.14	95	179950	43.97	ug/l	0.00
Spiked Amount	50.000		Recovery	=	87.94%	

## Target Compounds

						Qvalue
3) Chloromethane	1.30	50	4454	Below Cal	#	71
5) Bromomethane	1.66	94	1019	Below Cal	#	80
6) Chloroethane	1.68	64	780	0.39	ug/l	# 71
8) Diethyl Ether	2.39	74	48	Below Cal		74
10) Methyl Iodide	2.52	142	1001	0.28	ug/l	# 90
11) Tert butyl alcohol	3.07	59	1934	Below Cal	#	73
13) Acrolein	2.27	56	39115	111.43	ug/l	# 1
14) Allyl chloride	2.81	41	52132	9.57	ug/l	# 4
15) Acrylonitrile	3.17	53	2561	Below Cal	#	34
16) Acetone	2.45	43	8403	Below Cal		95
18) Methyl Acetate	2.77	43	1237	Below Cal	#	71
19) Methyl tert-butyl Ether	3.21	73	522	Below Cal	#	1
20) Methylene Chloride	2.86	84	716	Below Cal	#	34
22) Diisopropyl ether	3.88	45	19	Below Cal	#	46
23) Vinyl Acetate	3.81	43	4176	0.47	ug/l	# 86
25) 2-Butanone	4.73	43	1760	0.76	ug/l	96
28) Bromochloromethane	5.03	49	19	Below Cal	#	13
30) Chloroform	5.28	83	4889	0.94	ug/l	# 19
31) Cyclohexane	5.58	56	75373	17.70	ug/l	96
36) 1,1-Dichloropropene	5.68	75	16635	4.49	ug/l	# 51
38) Carbon Tetrachloride	5.67	117	22293	5.76	ug/l	# 15
39) Methylcyclohexane	7.46	83	82238	18.15	ug/l	98
40) Benzene	6.15	78	8762	0.77	ug/l	99
43) Isopropyl Acetate	6.39	43	22846	3.02	ug/l	# 64
48) Methyl methacrylate	7.74	41	5323	1.40	ug/l	# 57
52) Toluene	8.79	92	196404	27.21	ug/l	99
55) 1,1,2-Trichloroethane	9.17	97	7203	2.43	ug/l	# 19
56) Ethyl methacrylate	9.16	69	1851	0.39	ug/l	# 1
65) Chlorobenzene	10.14	112	70868	8.77	ug/l	99
67) Ethyl Benzene	10.26	91	9363	0.69	ug/l	94
68) m/p-Xylenes	10.37	106	77092	14.67	ug/l	99
69) o-Xylene	10.70	106	11776	2.25	ug/l	97
73) Isopropylbenzene	11.02	105	125115	9.72	ug/l	100
74) N-amyl acetate	6.39	43	22846	3.29	ug/l	# 61

Data Path : Z:\VOASRV\HPCHEM1\MSVOA X\DATA\VX060618\  
 Data File : VX002362.D  
 Acq On : 06 Jun 2018 19:29  
 Operator : JC/MD  
 Sample : J3312-05  
 Misc : 5.0mL/MSVOA X/WATER  
 ALS Vial : 21 Sample Multiplier: 1

Instrument :  
 MSVOA\_X  
 ClientSampleId :  
 PW-01

Quant Time: Jun 07 03:26:04 2018  
 Quant Method : Z:\VOASRV\HPCHEM1\MSVOA\_X\METHOD\82X060418W.M  
 Quant Title : SW846 8260  
 QLast Update : Tue Jun 05 03:22:35 2018  
 Response via : Initial Calibration

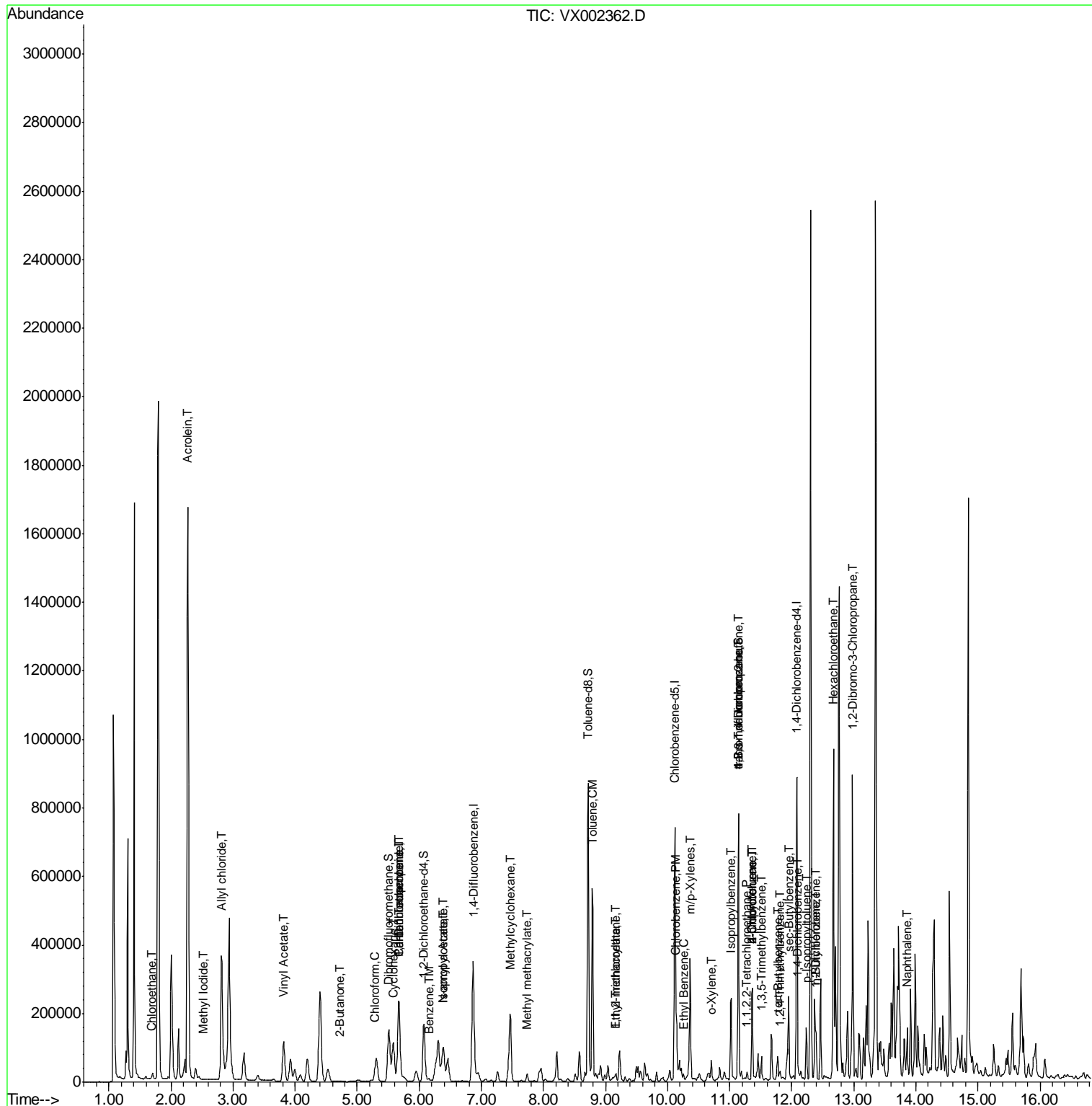
Internal Standards	R.T.	QIon	Response	Conc	Units	Dev(Min)
75) 1,1,2,2-Tetrachloroethane	11.28	83	1233	0.30	ug/l #	56
76) 1,2,3-Trichloropropane	11.14	75	95469	23.51	ug/l #	32
78) n-propylbenzene	11.37	91	159071	11.11	ug/l	99
79) 2-Chlorotoluene	11.37	91	159071	17.60	ug/l #	39
80) 1,3,5-Trimethylbenzene	11.51	105	27851	2.52	ug/l	100
81) trans-1,4-Dichloro-2-buten	11.14	75	95469	82.40	ug/l #	6
82) 4-Chlorotoluene	11.37	91	159071	15.25	ug/l #	44
83) tert-Butylbenzene	11.77	119	23734	2.21	ug/l	93
84) 1,2,4-Trimethylbenzene	11.81	105	8531	0.75	ug/l	99
85) sec-Butylbenzene	11.95	105	118029	9.36	ug/l	82
86) p-Isopropyltoluene	12.24	119	61416	5.35	ug/l	96
88) 1,4-Dichlorobenzene	12.10	146	3690	0.55	ug/l #	63
89) n-Butylbenzene	12.39	91	58126	6.03	ug/l #	68
90) Hexachloroethane	12.67	117	42721	23.30	ug/l #	1
91) 1,2-Dichlorobenzene	12.40	146	3388	0.51	ug/l	88
92) 1,2-Dibromo-3-Chloropropan	12.98	75	3230	3.65	ug/l #	25
95) Naphthalene	13.85	128	4839	0.36	ug/l #	30

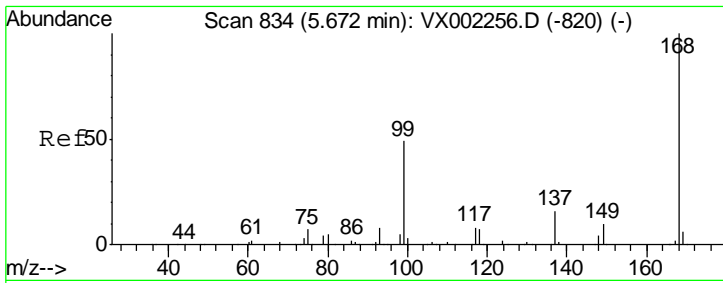
(#) = qualifier out of range (m) = manual integration (+) = signals summed

Data Path : Z:\VOASRV\HPCHEM1\MSVOA X\DATA\VX060618\  
 Data File : VX002362.D  
 Acq On : 06 Jun 2018 19:29  
 Operator : JC/MD  
 Sample : J3312-05  
 Misc : 5.0mL/MSVOA X/WATER  
 ALS Vial : 21 Sample Multiplier: 1

Instrument :  
 MSVOA\_X  
 Client Sampled :  
 PW-01

Quant Time: Jun 07 03:26:04 2018  
 Quant Method : Z:\VOASRV\HPCHEM1\MSVOA\_X\METHOD\82X060418W.M  
 Quant Title : SW846 8260  
 QLast Update : Tue Jun 05 03:22:35 2018  
 Response via : Initial Calibration

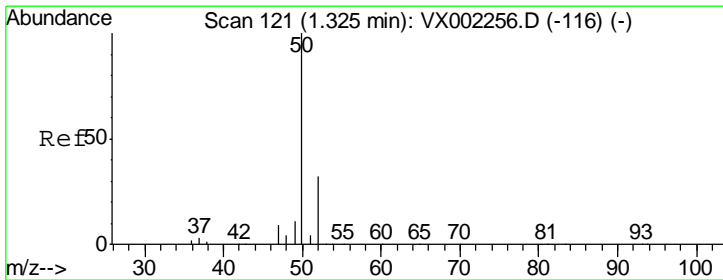
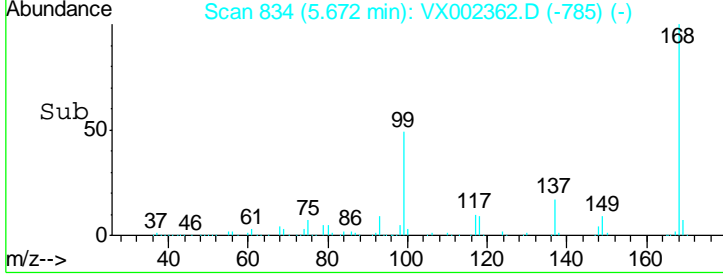
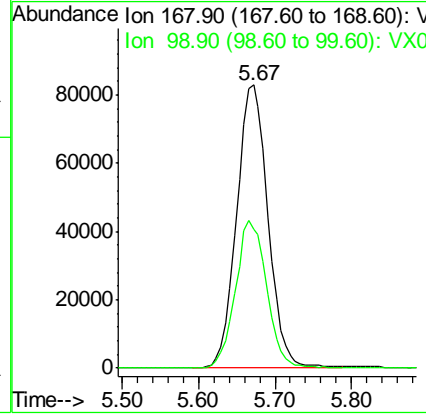
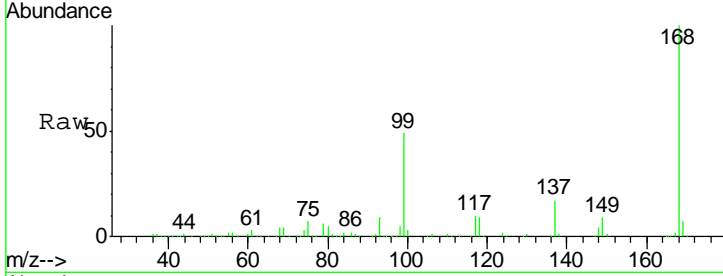




#1  
 Pentafluorobenzene  
 Concen: 50.00 ug/l  
 RT: 5.67 min Scan# 834  
 Delta R.T. -0.00 min  
 Lab File: VX002362.D  
 Acq: 06 Jun 2018 19:29

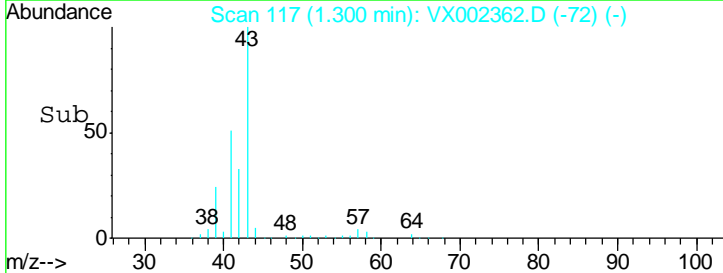
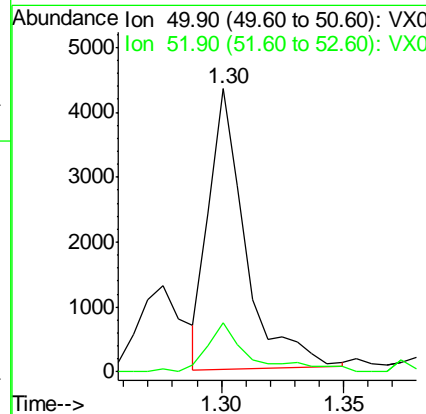
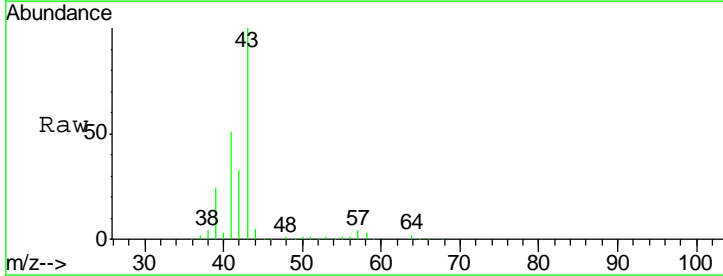
Instrument : MSVOA\_X  
 ClientSampled : PW-01

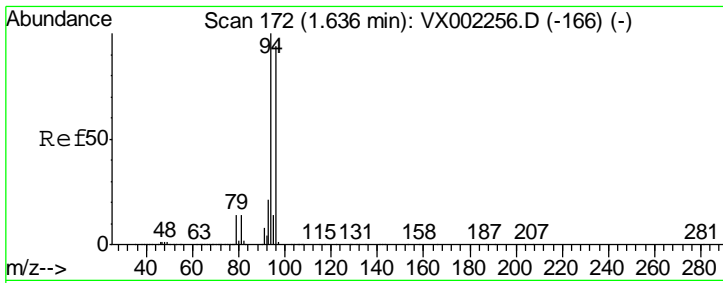
Tgt Ion	Resp	Lower	Upper
168	100		
99	49.1	39.3	58.9



#3  
 Chloromethane  
 Concen: Below Cal  
 RT: 1.30 min Scan# 117  
 Delta R.T. -0.02 min  
 Lab File: VX002362.D  
 Acq: 06 Jun 2018 19:29

Tgt Ion	Resp	Lower	Upper
50	100		
52	15.9	25.7	38.5#

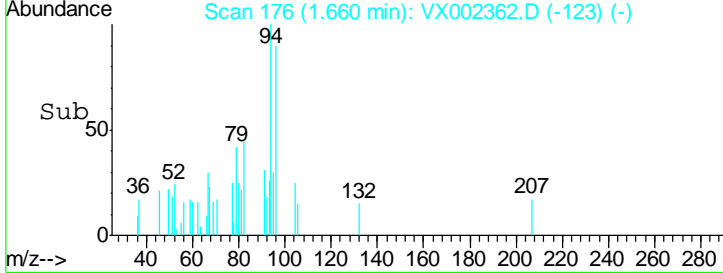
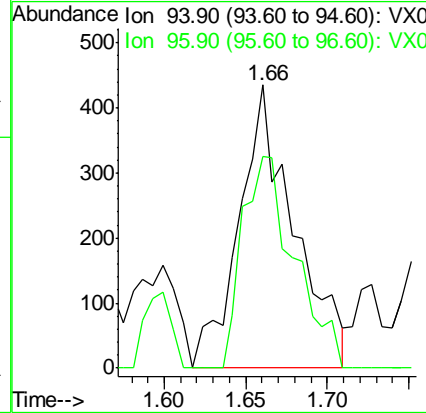
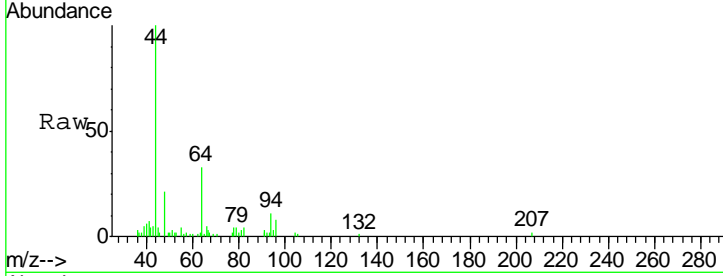




#5  
 Bromomethane  
 Concen: Below Cal  
 RT: 1.66 min Scan# 176  
 Delta R.T. 0.03 min  
 Lab File: VX002362.D  
 Acq: 06 Jun 2018 19:29

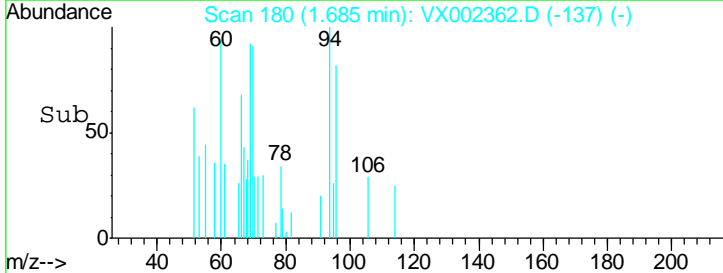
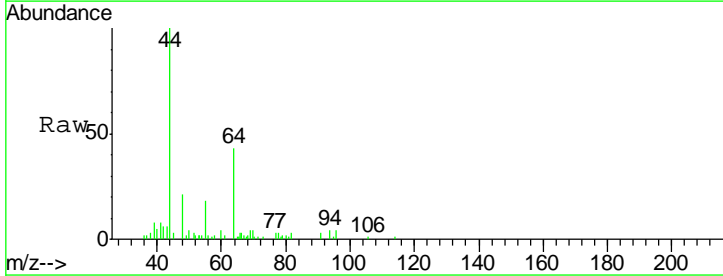
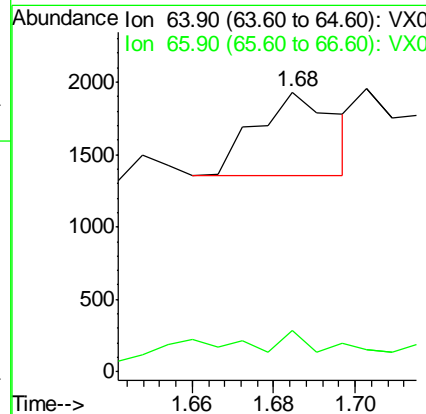
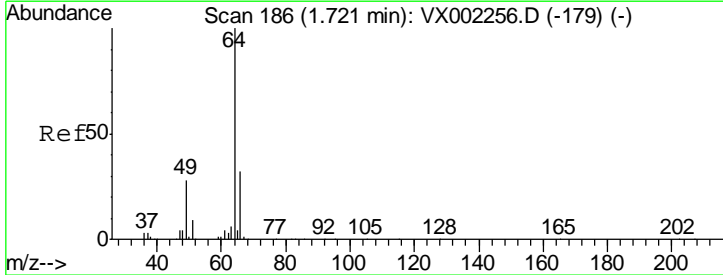
**Instrument :**  
 MSVOA\_X  
**ClientSampled :**  
 PW-01

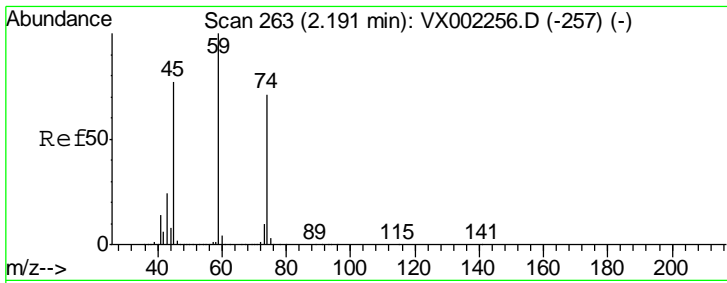
Tgt Ion: 94 Resp: 1019  
 Ion Ratio Lower Upper  
 94 100  
 96 74.7 74.9 112.3#



#6  
 Chloroethane  
 Concen: 0.39 ug/l  
 RT: 1.68 min Scan# 180  
 Delta R.T. -0.04 min  
 Lab File: VX002362.D  
 Acq: 06 Jun 2018 19:29

Tgt Ion: 64 Resp: 780  
 Ion Ratio Lower Upper  
 64 100  
 66 15.7 25.5 38.3#

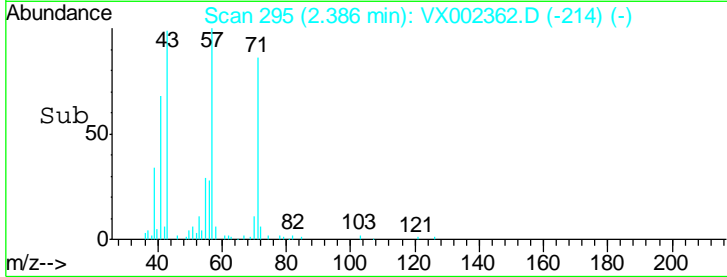
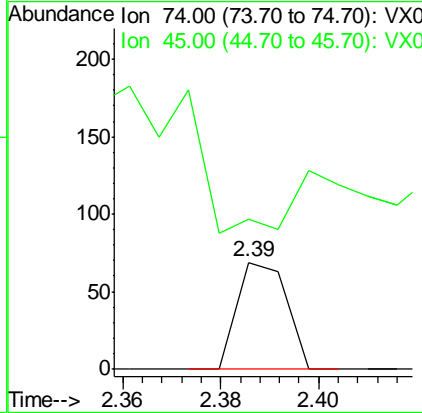
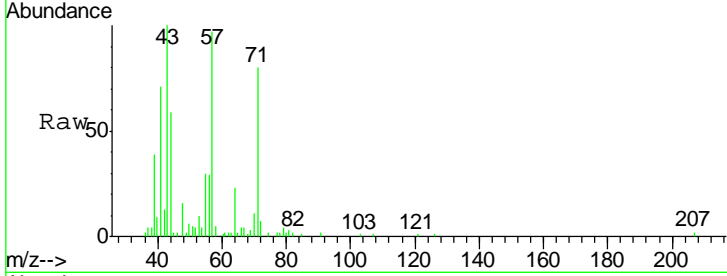




#8  
 Diethyl Ether  
 Concen: Below Cal  
 RT: 2.39 min Scan# 295  
 Delta R.T. 0.20 min  
 Lab File: VX002362.D  
 Acq: 06 Jun 2018 19:29

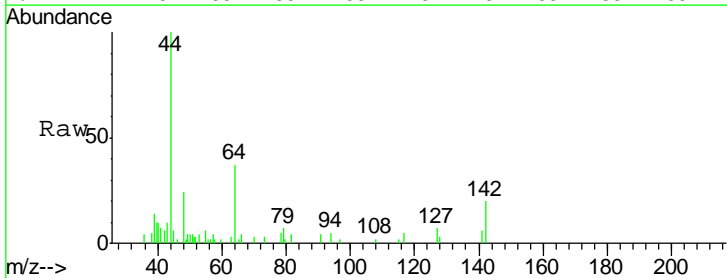
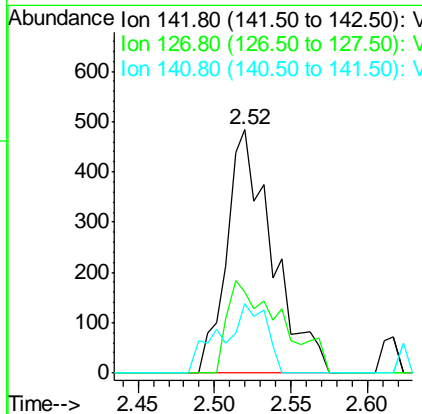
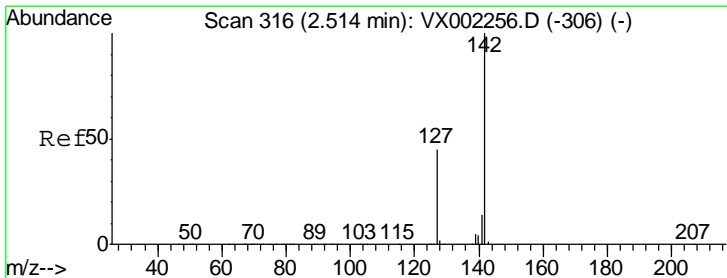
**Instrument :**  
 MSVOA\_X  
**ClientSampled :**  
 PW-01

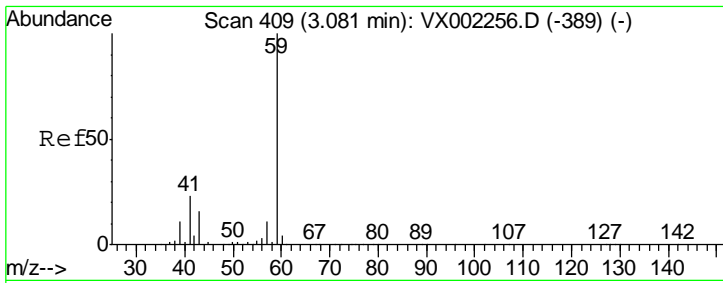
Tgt Ion	Resp	Lower	Upper
74	100		
45	79.2	53.1	159.4



#10  
 Methyl Iodide  
 Concen: 0.28 ug/l  
 RT: 2.52 min Scan# 317  
 Delta R.T. 0.01 min  
 Lab File: VX002362.D  
 Acq: 06 Jun 2018 19:29

Tgt Ion	Resp	Lower	Upper
142	100		
127	44.1	36.6	55.0
141	28.5	11.3	16.9#

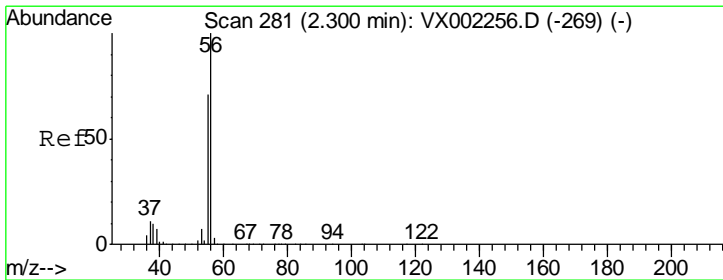
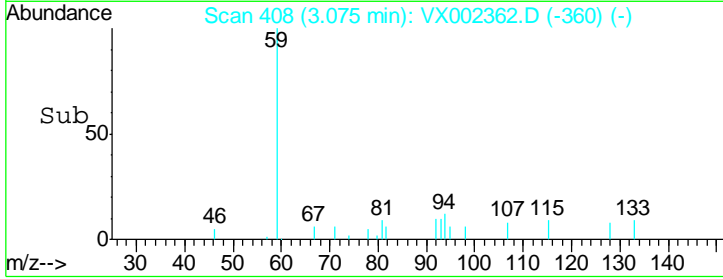
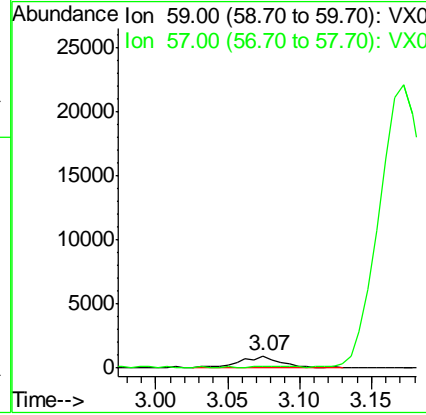
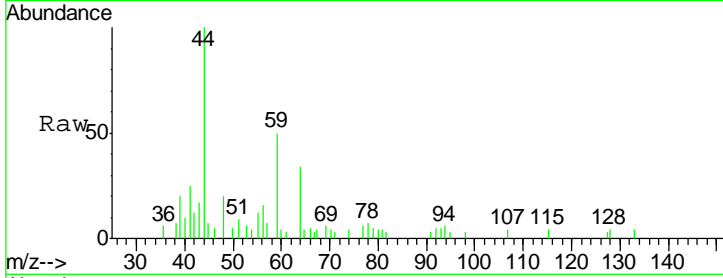




#11  
 Tert butyl alcohol  
 Concen: Below Cal  
 RT: 3.07 min Scan# 408  
 Delta R.T. -0.01 min  
 Lab File: VX002362.D  
 Acq: 06 Jun 2018 19:29

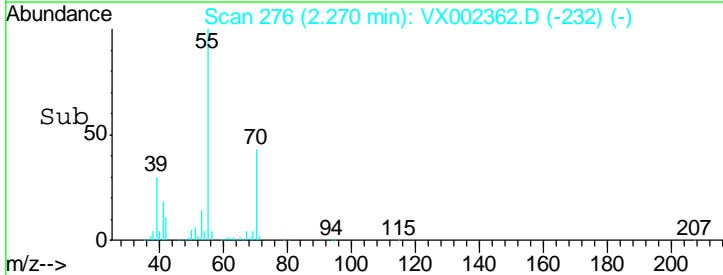
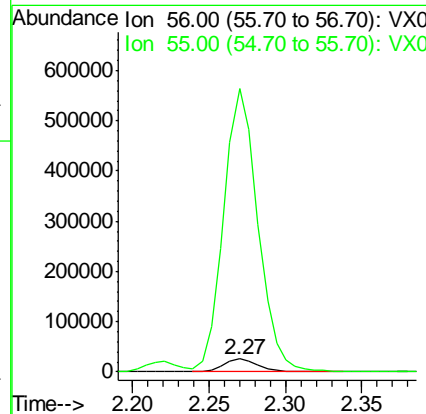
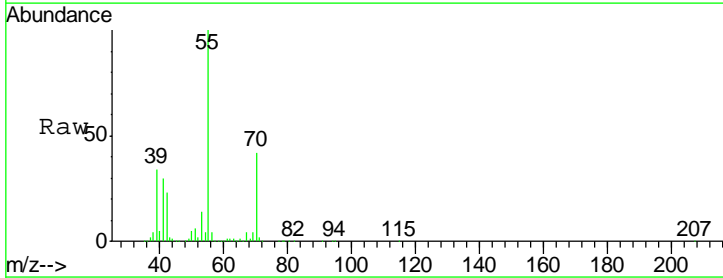
Instrument : MSVOA\_X  
 ClientSampled : PW-01

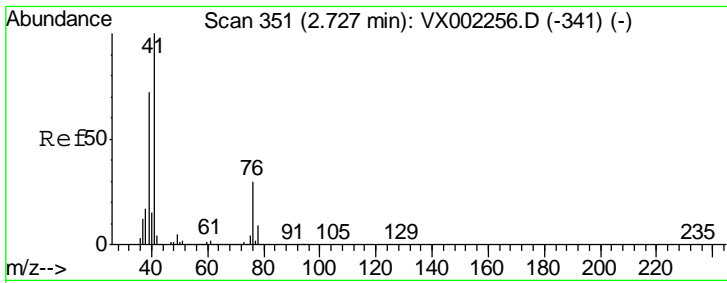
Tgt Ion: 59 Resp: 1934  
 Ion Ratio Lower Upper  
 59 100  
 57 0.0 8.2 12.2#



#13  
 Acrolein  
 Concen: 111.43 ug/l  
 RT: 2.27 min Scan# 276  
 Delta R.T. -0.03 min  
 Lab File: VX002362.D  
 Acq: 06 Jun 2018 19:29

Tgt Ion: 56 Resp: 39115  
 Ion Ratio Lower Upper  
 56 100  
 55 2244.8 57.0 85.4#

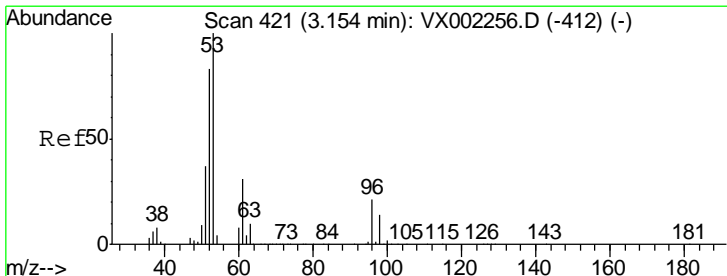
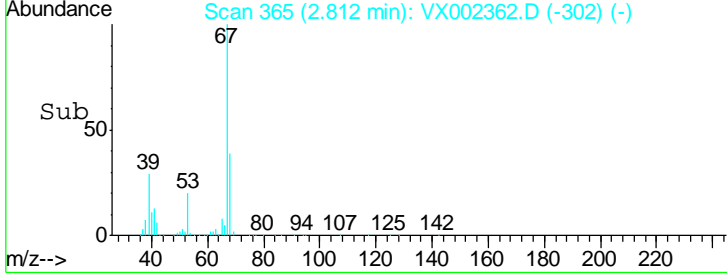
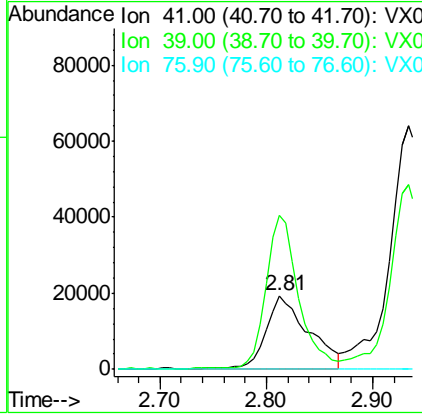
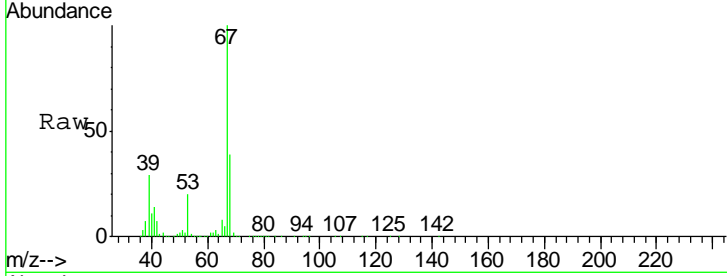




#14  
 Allyl chloride  
 Concen: 9.57 ug/l  
 RT: 2.81 min Scan# 365  
 Delta R.T. 0.09 min  
 Lab File: VX002362.D  
 Acq: 06 Jun 2018 19:29

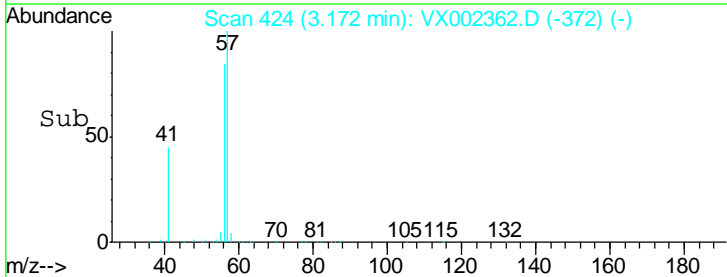
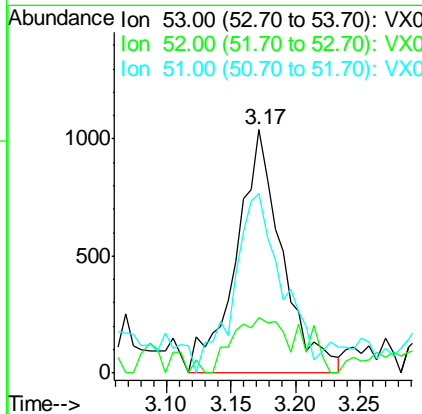
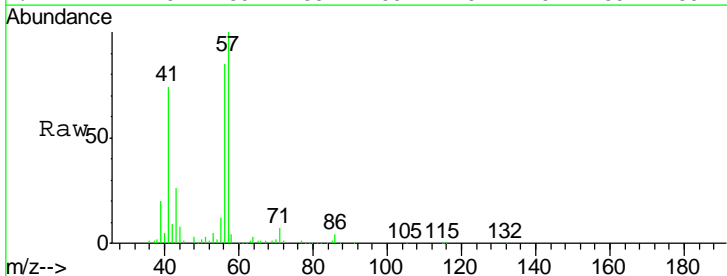
Instrument : MSVOA\_X  
 ClientSampled : PW-01

Tgt Ion	Resp	Lower	Upper
41	100		
39	164.1	56.8	85.2#
76	0.1	23.8	35.8#

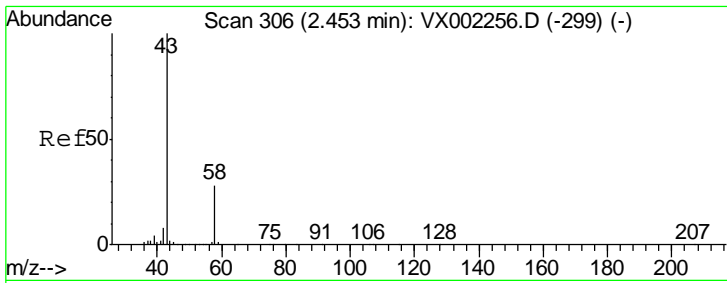


#15  
 Acrylonitrile  
 Concen: Below Cal  
 RT: 3.17 min Scan# 424  
 Delta R.T. 0.02 min  
 Lab File: VX002362.D  
 Acq: 06 Jun 2018 19:29

Tgt Ion	Resp	Lower	Upper
53	100		
52	24.9	66.7	100.1#
51	78.8	29.9	44.9#



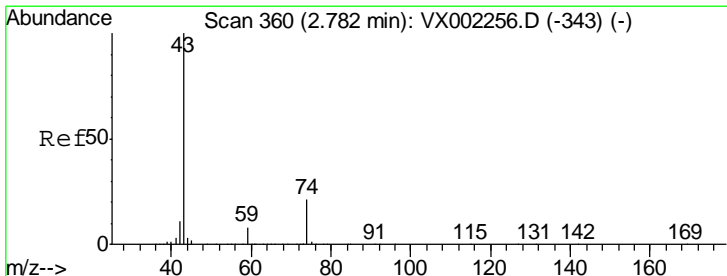
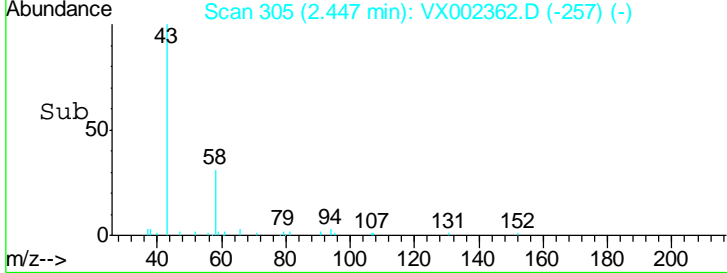
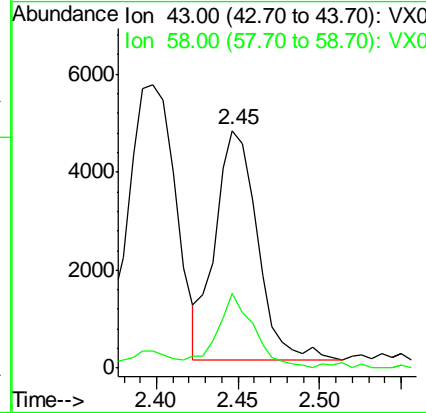
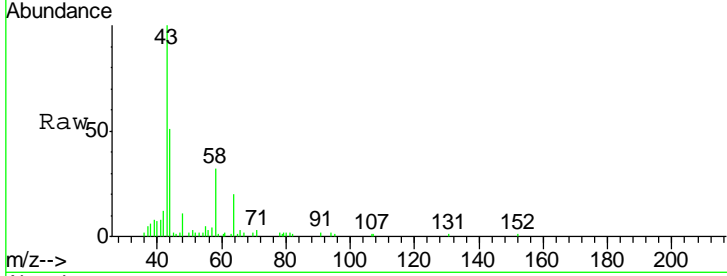




#16  
 Acetone  
 Concen: Below Cal  
 RT: 2.45 min Scan# 305  
 Delta R.T. -0.01 min  
 Lab File: VX002362.D  
 Acq: 06 Jun 2018 19:29

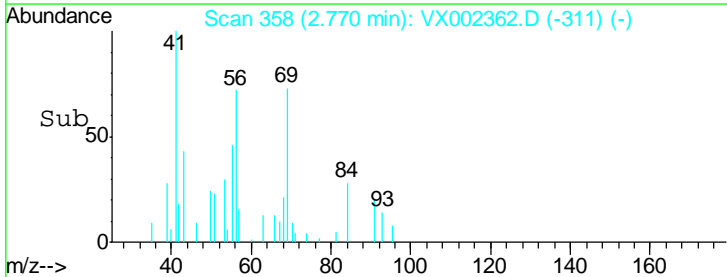
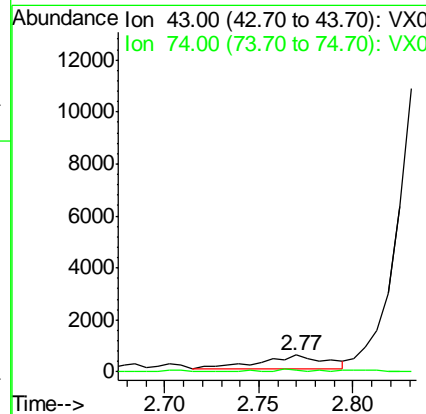
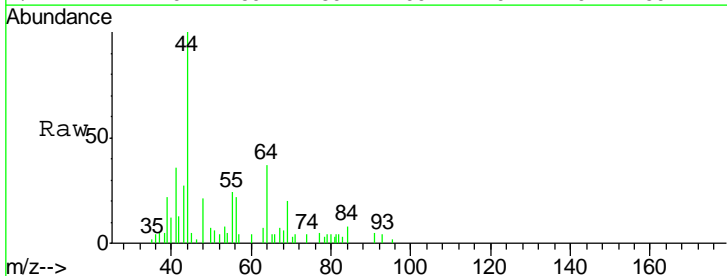
Instrument : MSVOA\_X  
 ClientSampled : PW-01

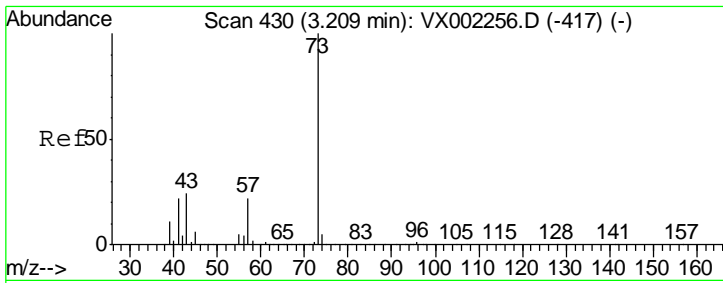
Tgt Ion	Resp	Lower	Upper
43	100		
58	30.4	22.1	33.1



#18  
 Methyl Acetate  
 Concen: Below Cal  
 RT: 2.77 min Scan# 358  
 Delta R.T. -0.01 min  
 Lab File: VX002362.D  
 Acq: 06 Jun 2018 19:29

Tgt Ion	Resp	Lower	Upper
43	100		
74	7.4	16.7	25.1#

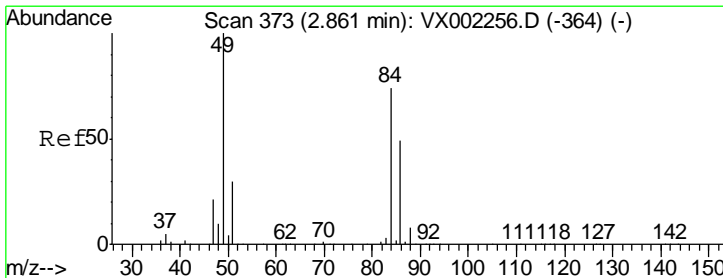
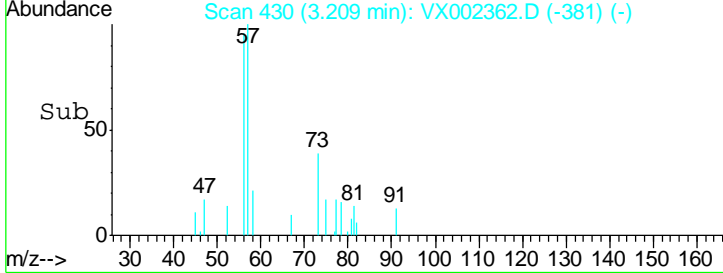
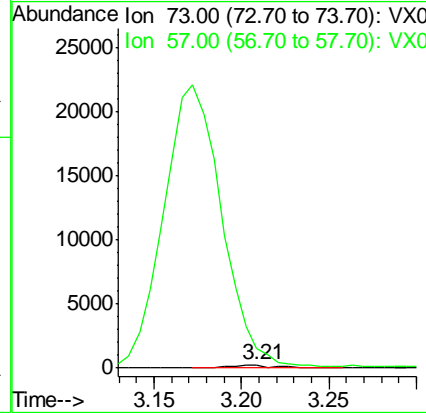
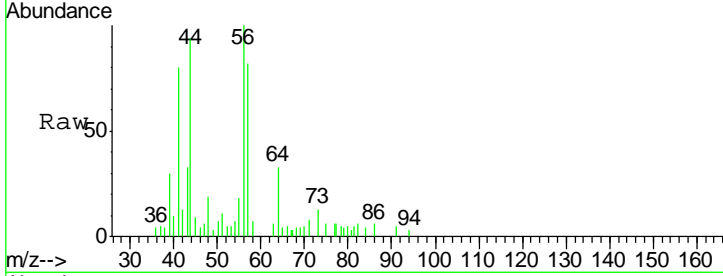




#19  
 Methyl tert-butyl Ether  
 Concen: Below Cal  
 RT: 3.21 min Scan# 430  
 Delta R.T. 0.00 min  
 Lab File: VX002362.D  
 Acq: 06 Jun 2018 19:29

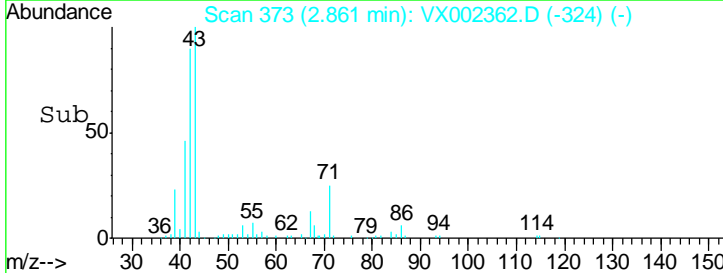
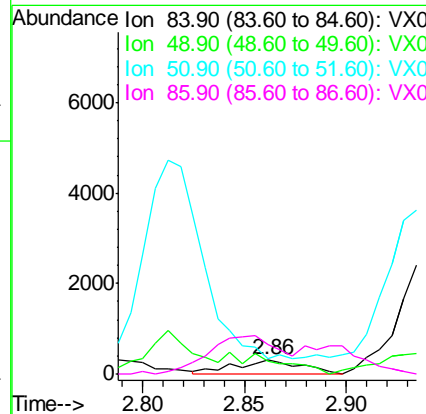
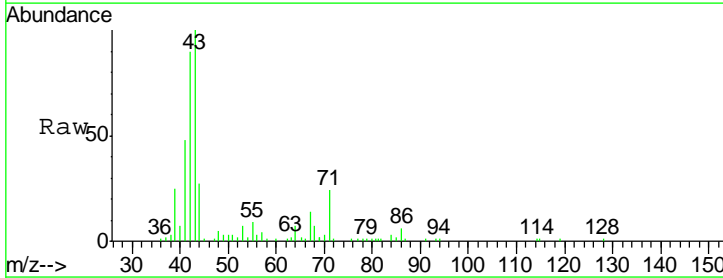
Instrument : MSVOA\_X  
 ClientSampled : PW-01

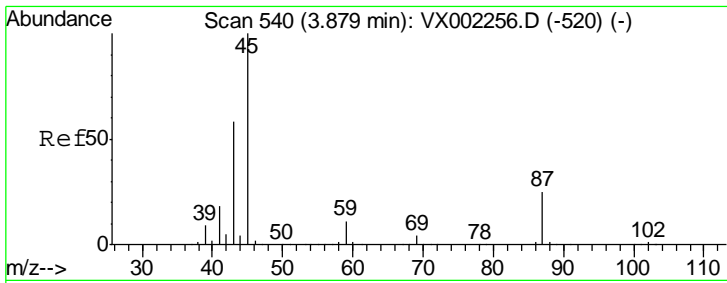
Tgt Ion	Resp	Lower	Upper
73	100		
57	560.7	17.7	26.5#



#20  
 Methylene Chloride  
 Concen: Below Cal  
 RT: 2.86 min Scan# 373  
 Delta R.T. 0.00 min  
 Lab File: VX002362.D  
 Acq: 06 Jun 2018 19:29

Tgt Ion	Resp	Lower	Upper
84	100		
49	59.0	107.8	161.6#
51	0.0	32.8	49.2#
86	122.8	52.5	78.7#

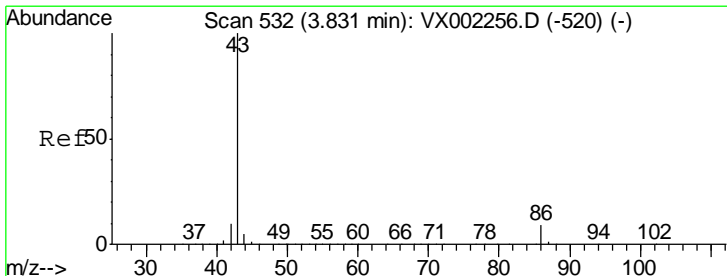
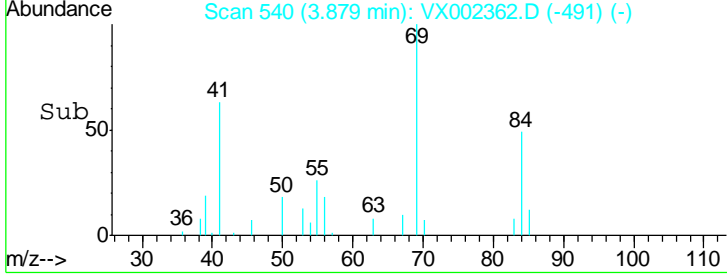
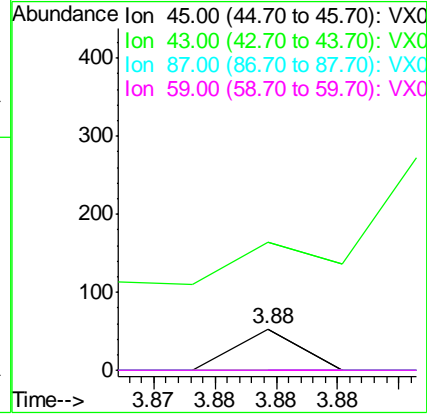
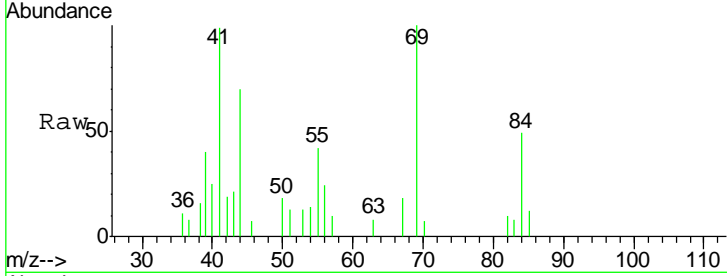




#22  
 Diisopropyl ether  
 Concen: Below Cal  
 RT: 3.88 min Scan# 540  
 Delta R.T. 0.00 min  
 Lab File: VX002362.D  
 Acq: 06 Jun 2018 19:29

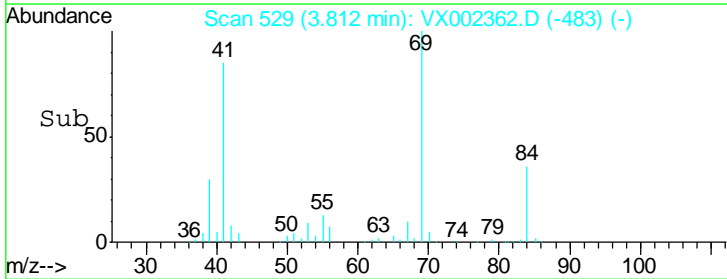
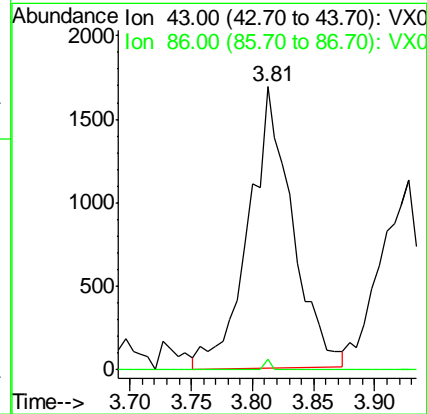
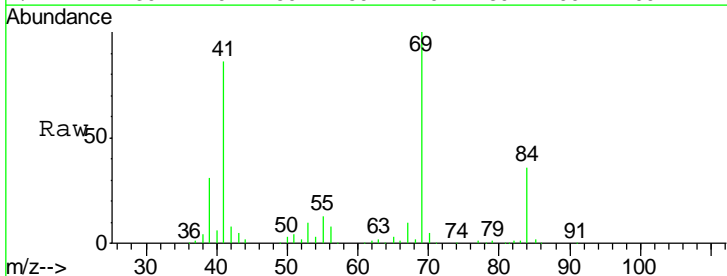
Instrument : MSVOA\_X  
 ClientSampled : PW-01

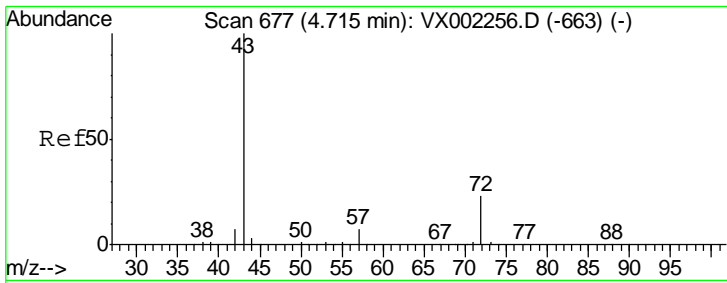
Tgt Ion	Resp	Lower	Upper
45	100		
43	103.8	46.8	70.2#
87	0.0	20.2	30.4#
59	0.0	8.7	13.1#



#23  
 Vinyl Acetate  
 Concen: 0.47 ug/l  
 RT: 3.81 min Scan# 529  
 Delta R.T. -0.02 min  
 Lab File: VX002362.D  
 Acq: 06 Jun 2018 19:29

Tgt Ion	Resp	Lower	Upper
43	100		
86	4.0	7.4	11.0#

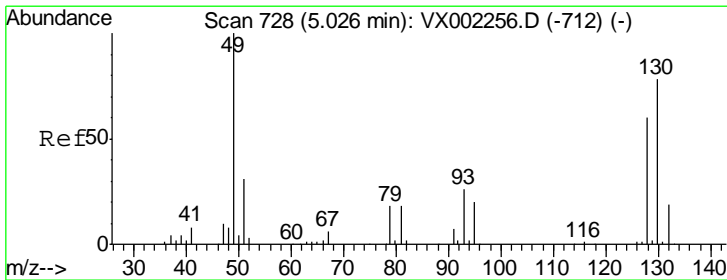
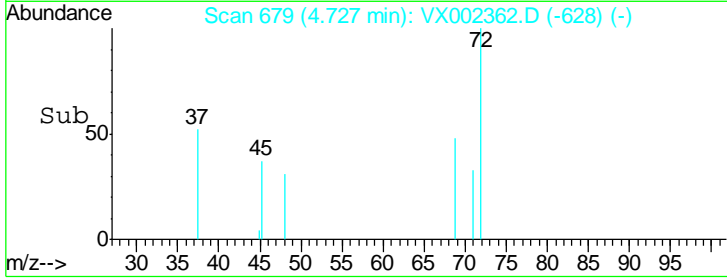
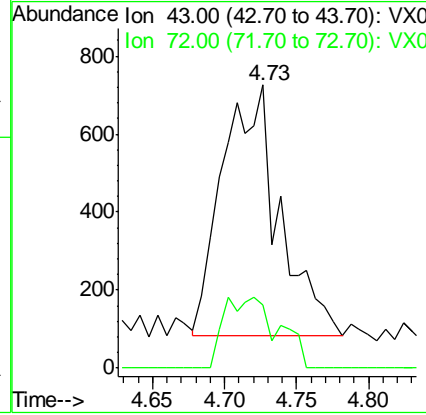
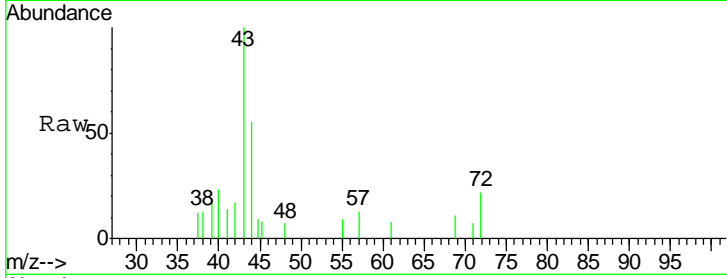




#25  
 2-Butanone  
 Concen: 0.76 ug/l  
 RT: 4.73 min Scan# 679  
 Delta R.T. 0.01 min  
 Lab File: VX002362.D  
 Acq: 06 Jun 2018 19:29

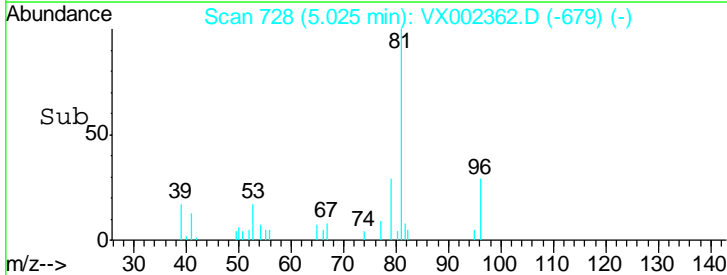
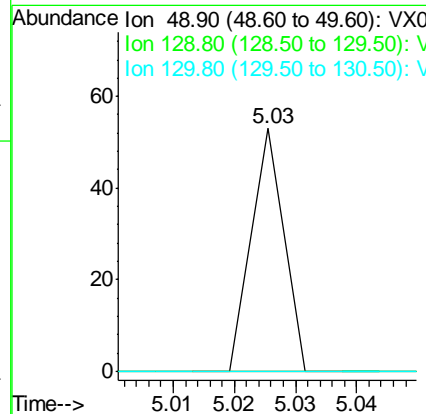
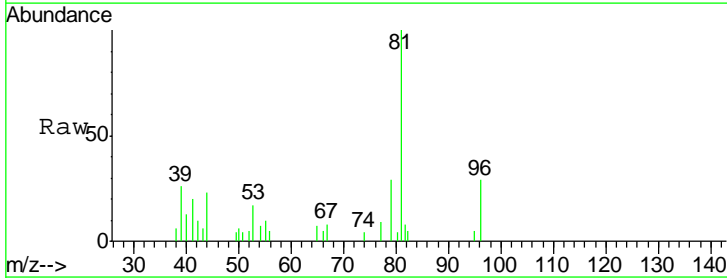
Instrument :  
 MSVOA\_X  
 ClientSampled :  
 PW-01

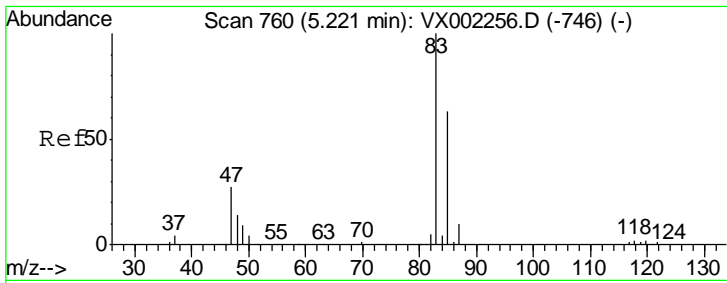
Tgt Ion	Resp	Lower	Upper
43	1760		
72	25.2	18.5	27.7



#28  
 Bromochloromethane  
 Concen: Below Cal  
 RT: 5.03 min Scan# 728  
 Delta R.T. 0.00 min  
 Lab File: VX002362.D  
 Acq: 06 Jun 2018 19:29

Tgt Ion	Resp	Lower	Upper
49	19		
129	0.0	0.0	4.2
130	0.0	61.2	91.8#

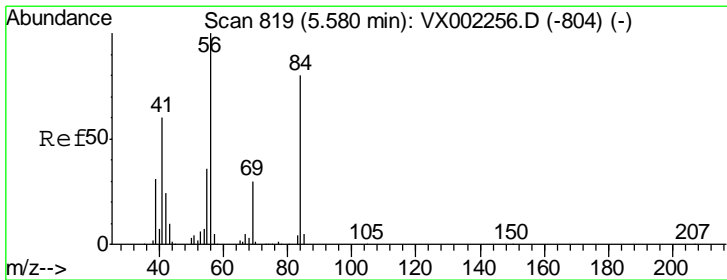
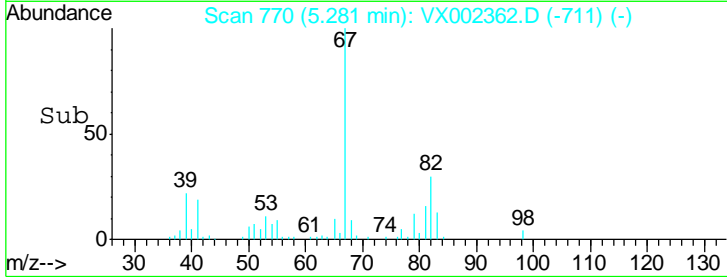
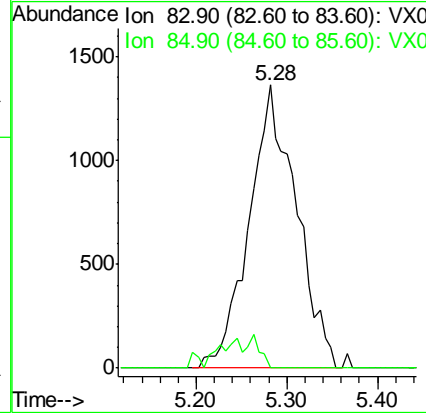
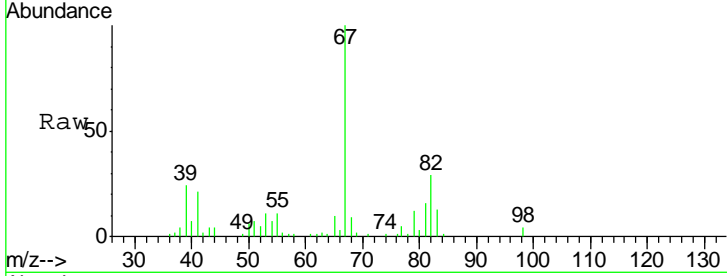




#30  
 Chloroform  
 Concen: 0.94 ug/l  
 RT: 5.28 min Scan# 770  
 Delta R.T. 0.06 min  
 Lab File: VX002362.D  
 Acq: 06 Jun 2018 19:29

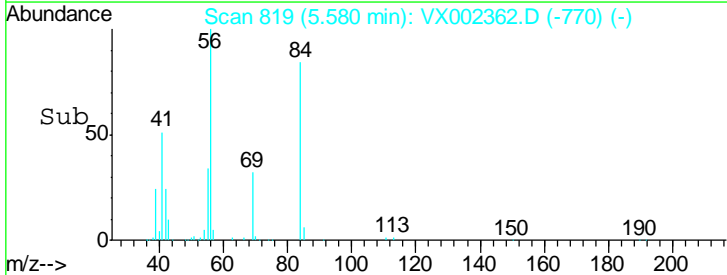
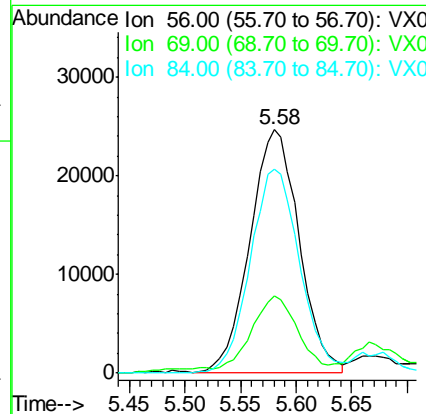
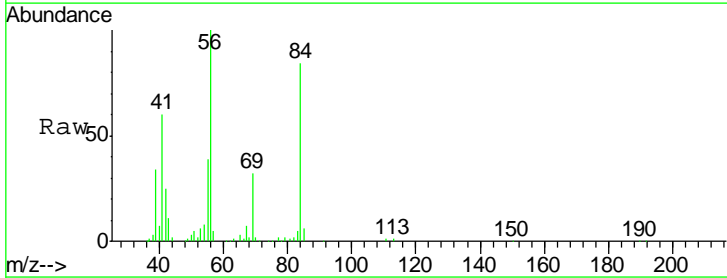
Instrument : MSVOA\_X  
 ClientSampled : PW-01

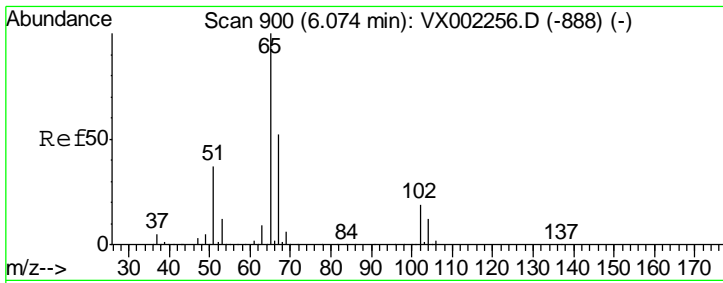
Tgt Ion	Resp	Lower	Upper
83	100		
85	0.0	50.4	75.6#



#31  
 Cyclohexane  
 Concen: 17.70 ug/l  
 RT: 5.58 min Scan# 819  
 Delta R.T. -0.00 min  
 Lab File: VX002362.D  
 Acq: 06 Jun 2018 19:29

Tgt Ion	Resp	Lower	Upper
56	100		
69	30.4	23.7	35.5
84	83.9	64.1	96.1

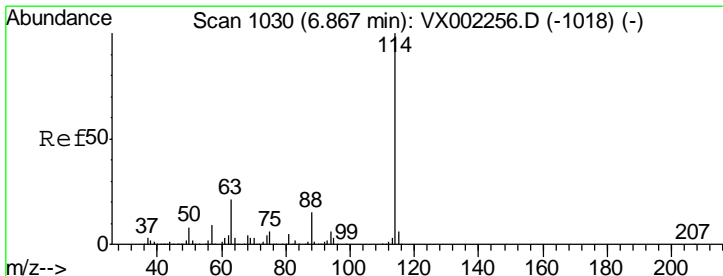
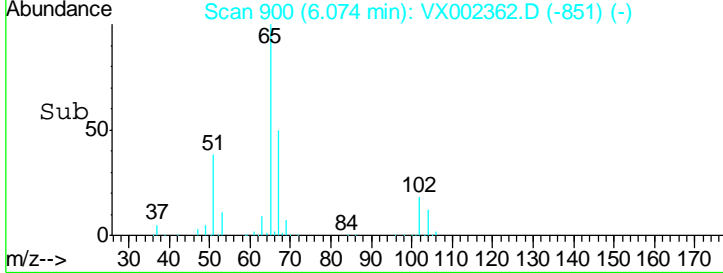
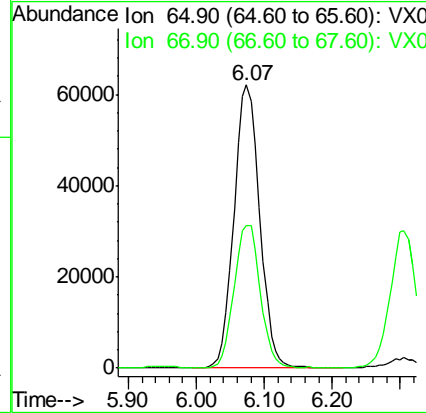
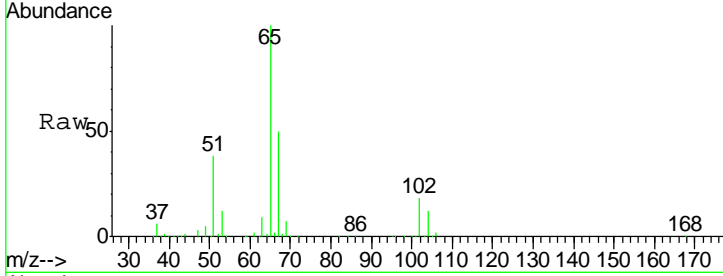




#33  
 1,2-Dichloroethane-d4  
 Concen: 48.43 ug/l  
 RT: 6.07 min Scan# 900  
 Delta R.T. 0.00 min  
 Lab File: VX002362.D  
 Acq: 06 Jun 2018 19:29

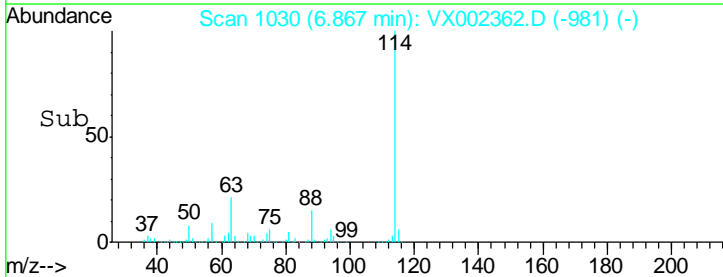
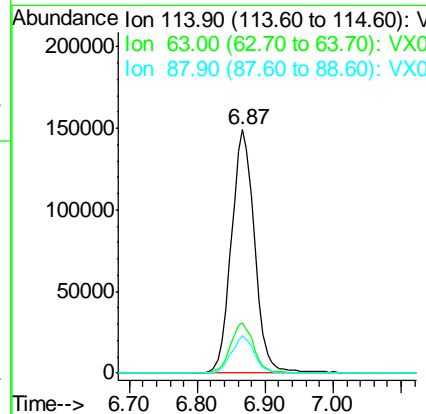
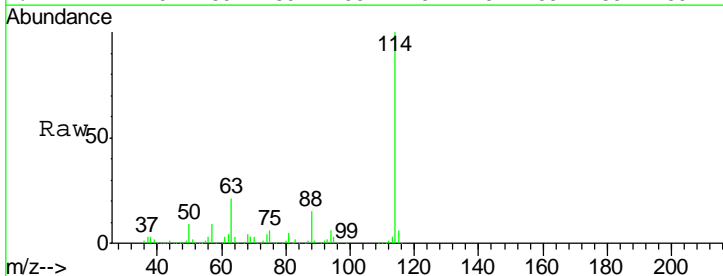
Instrument :  
 MSVOA\_X  
 ClientSampled :  
 PW-01

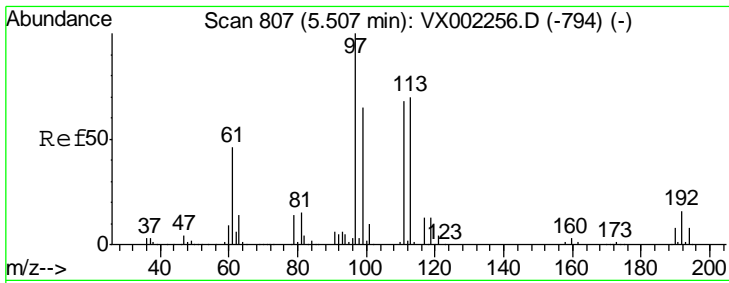
Tgt Ion	Resp	Lower	Upper
65	100		
67	51.4	0.0	102.6



#34  
 1,4-Difluorobenzene  
 Concen: 50.00 ug/l  
 RT: 6.87 min Scan# 1030  
 Delta R.T. -0.00 min  
 Lab File: VX002362.D  
 Acq: 06 Jun 2018 19:29

Tgt Ion	Resp	Lower	Upper
114	100		
63	20.6	0.0	41.4
88	15.2	0.0	30.0

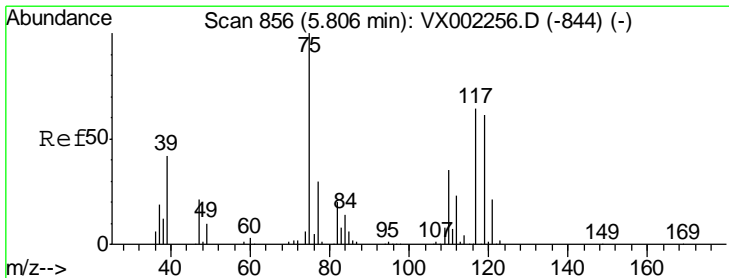
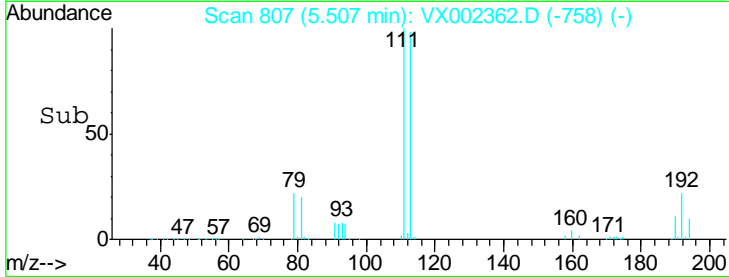
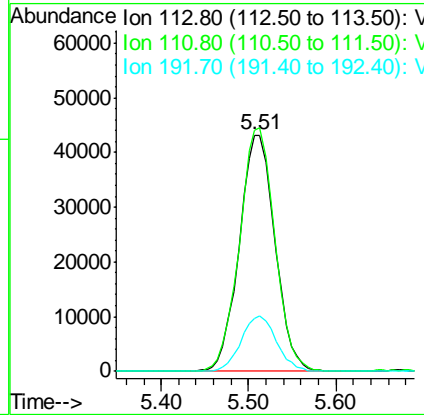
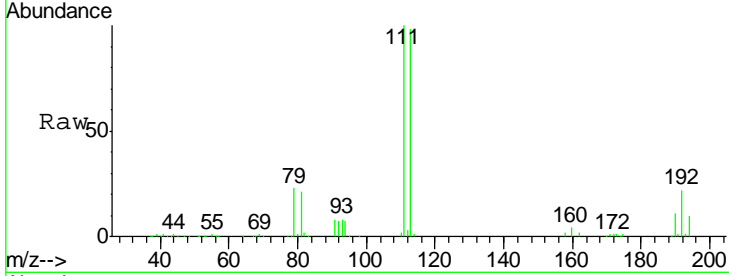




#35  
 Dibromofluoromethane  
 Concen: 44.33 ug/l  
 RT: 5.51 min Scan# 807  
 Delta R.T. -0.00 min  
 Lab File: VX002362.D  
 Acq: 06 Jun 2018 19:29

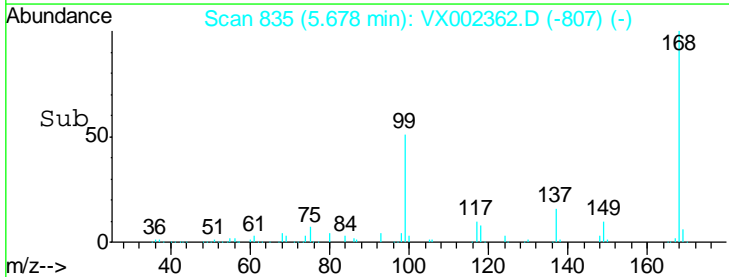
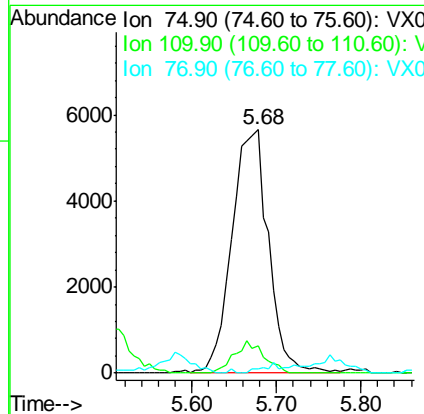
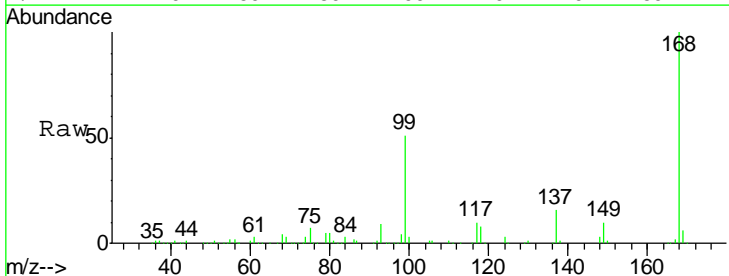
Instrument :  
 MSVOA\_X  
 ClientSampled :  
 PW-01

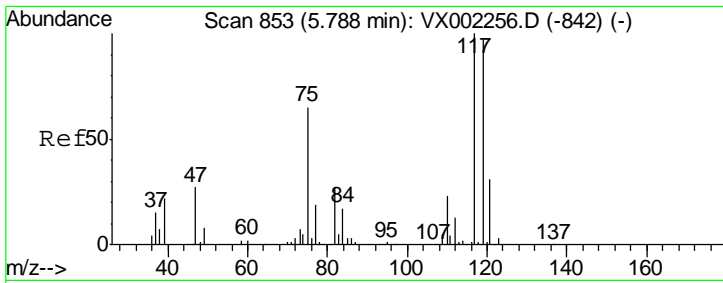
Tgt Ion	Resp	Lower	Upper
113	122757		
113	100		
111	101.8	81.4	122.0
192	23.2	19.1	28.7



#36  
 1,1-Dichloropropene  
 Concen: 4.49 ug/l  
 RT: 5.68 min Scan# 835  
 Delta R.T. -0.13 min  
 Lab File: VX002362.D  
 Acq: 06 Jun 2018 19:29

Tgt Ion	Resp	Lower	Upper
75	16635		
75	100		
110	10.7	18.1	54.4#
77	0.0	24.3	36.5#

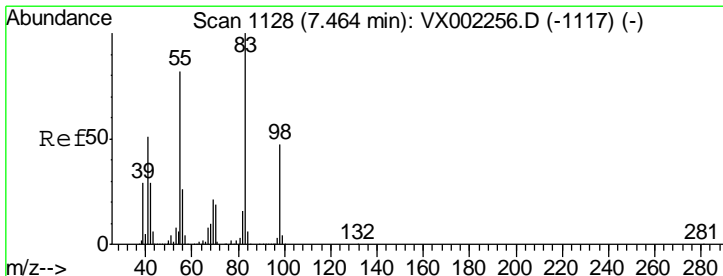
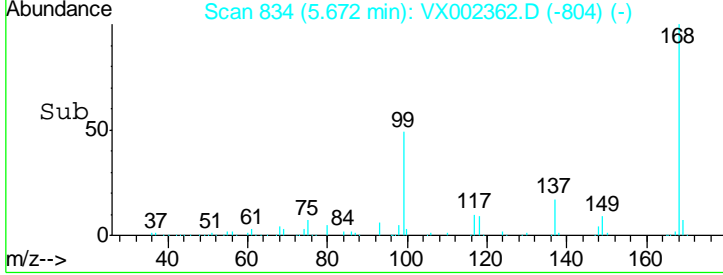
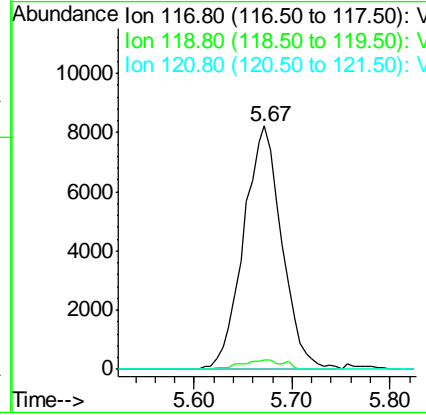
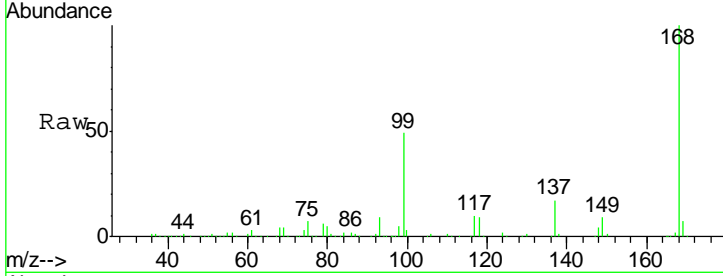




#38  
 Carbon Tetrachloride  
 Concen: 5.76 ug/l  
 RT: 5.67 min Scan# 834  
 Delta R.T. -0.12 min  
 Lab File: VX002362.D  
 Acq: 06 Jun 2018 19:29

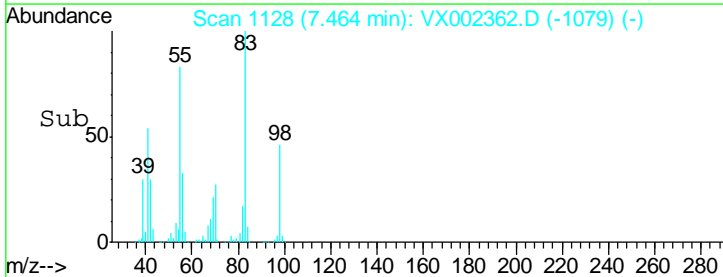
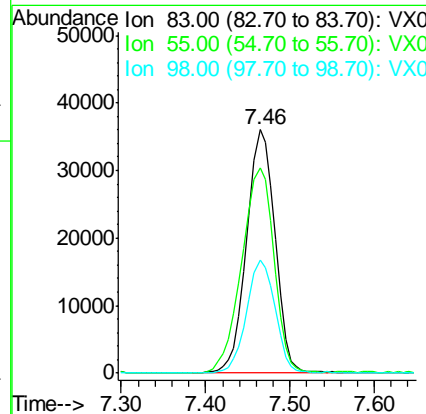
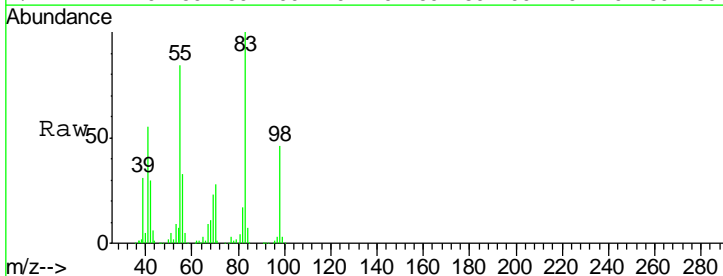
Instrument :  
 MSVOA\_X  
 ClientSampled :  
 PW-01

Tgt Ion	Resp	Lower	Upper
117	22293		
119	3.7	77.4	116.0#
121	0.0	24.4	36.6#

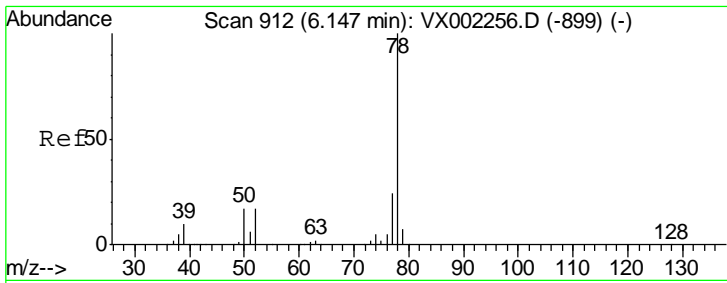


#39  
 Methylcyclohexane  
 Concen: 18.15 ug/l  
 RT: 7.46 min Scan# 1128  
 Delta R.T. 0.00 min  
 Lab File: VX002362.D  
 Acq: 06 Jun 2018 19:29

Tgt Ion	Resp	Lower	Upper
83	82238		
55	84.0	65.4	98.0
98	46.5	37.4	56.0



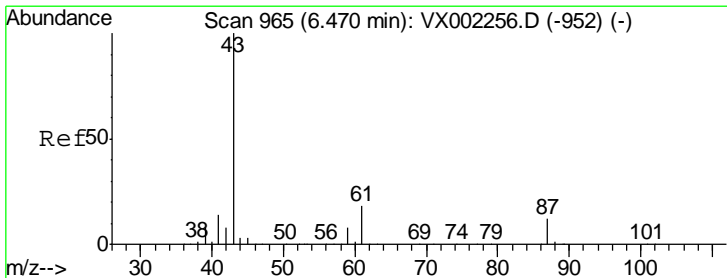
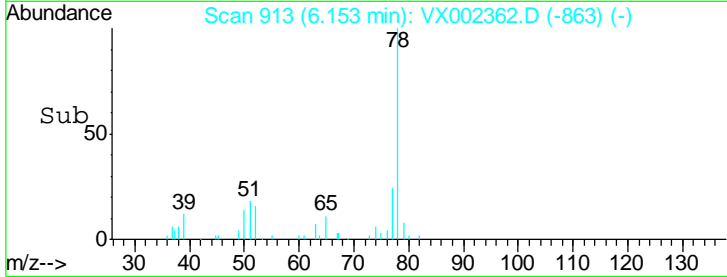
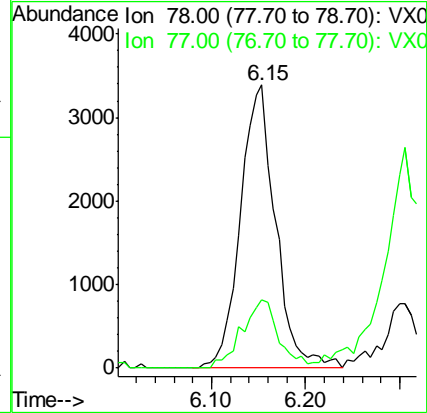
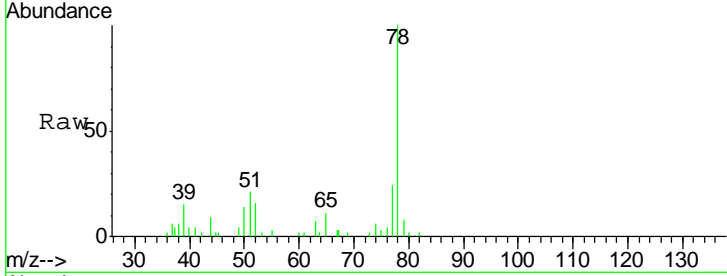




#40  
Benzene  
Concen: 0.77 ug/l  
RT: 6.15 min Scan# 913  
Delta R.T. 0.01 min  
Lab File: VX002362.D  
Acq: 06 Jun 2018 19:29

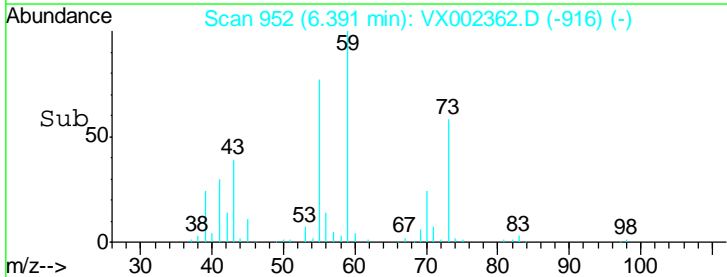
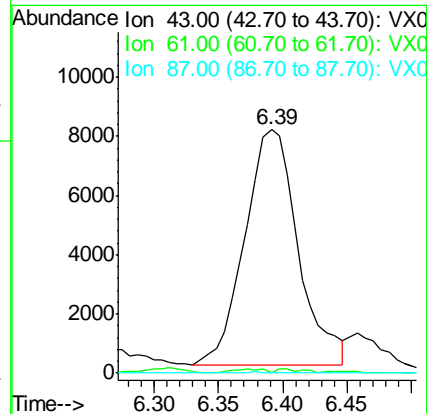
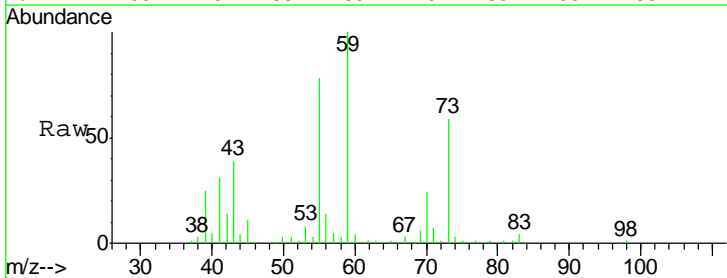
Instrument : MSVOA\_X  
ClientSampled : PW-01

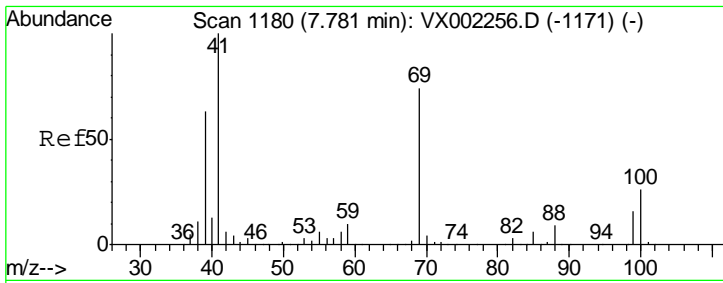
Tgt Ion	Resp	Lower	Upper
78	100		
77	24.3	19.1	28.7



#43  
Isopropyl Acetate  
Concen: 3.02 ug/l  
RT: 6.39 min Scan# 952  
Delta R.T. -0.08 min  
Lab File: VX002362.D  
Acq: 06 Jun 2018 19:29

Tgt Ion	Resp	Lower	Upper
43	100		
61	0.9	14.4	21.6#
87	0.0	9.5	14.3#

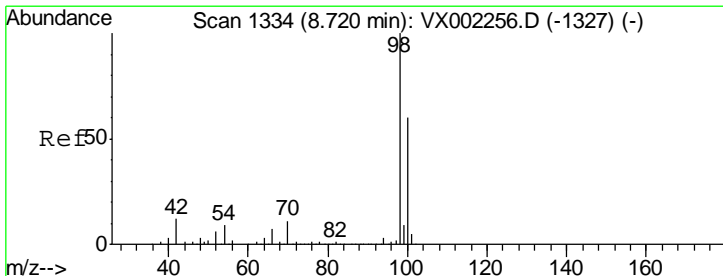
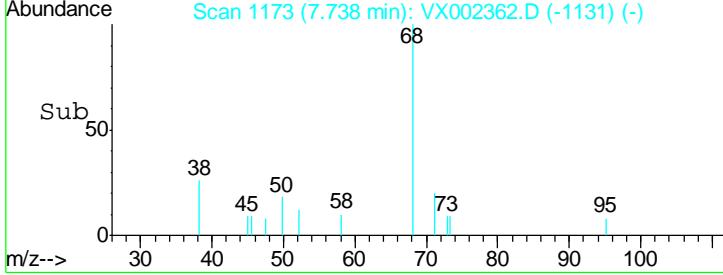
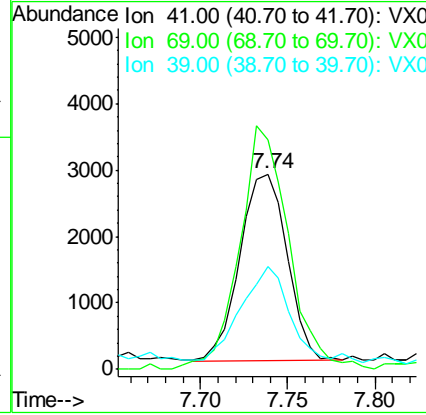
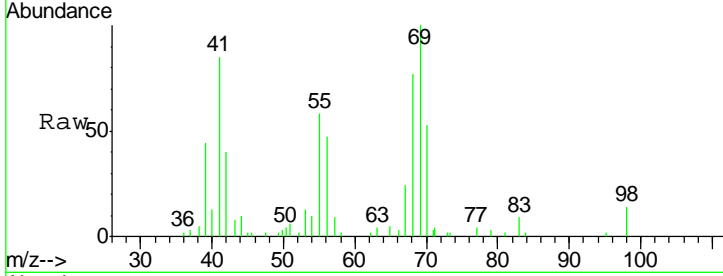




#48  
 Methyl methacrylate  
 Concen: 1.40 ug/l  
 RT: 7.74 min Scan# 1173  
 Delta R.T. -0.04 min  
 Lab File: VX002362.D  
 Acq: 06 Jun 2018 19:29

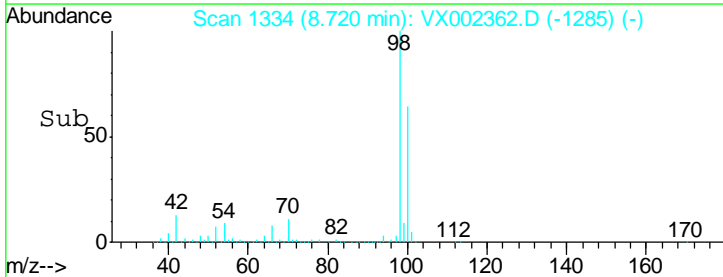
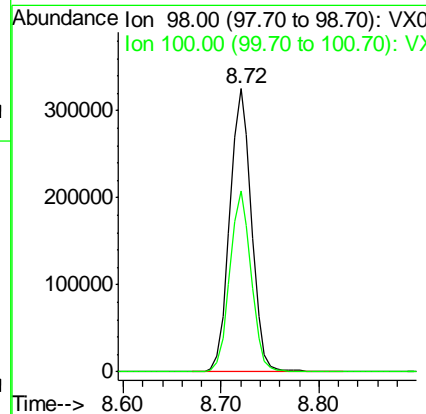
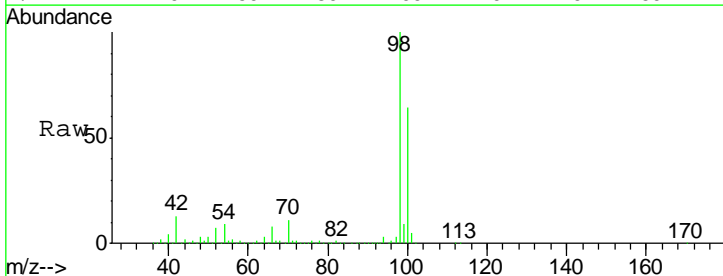
Instrument :  
 MSVOA\_X  
 ClientSampled :  
 PW-01

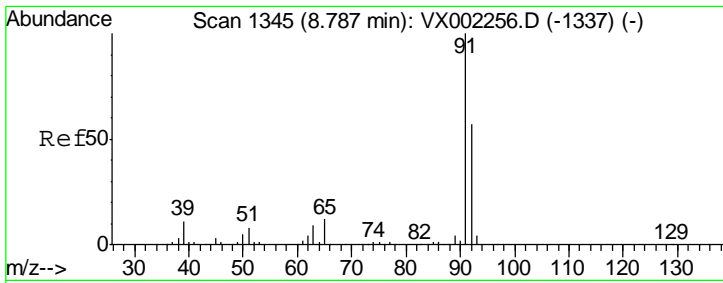
Tgt Ion	Resp	Lower	Upper
41	100		
69	134.2	59.1	88.7#
39	54.5	48.9	73.3



#50  
 Toluene-d8  
 Concen: 47.05 ug/l  
 RT: 8.72 min Scan# 1334  
 Delta R.T. -0.00 min  
 Lab File: VX002362.D  
 Acq: 06 Jun 2018 19:29

Tgt Ion	Resp	Lower	Upper
98	100		
100	63.6	50.9	76.3

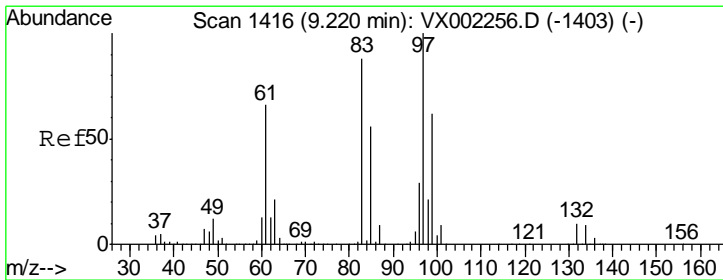
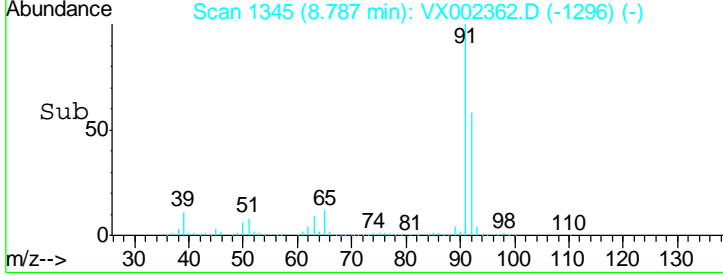
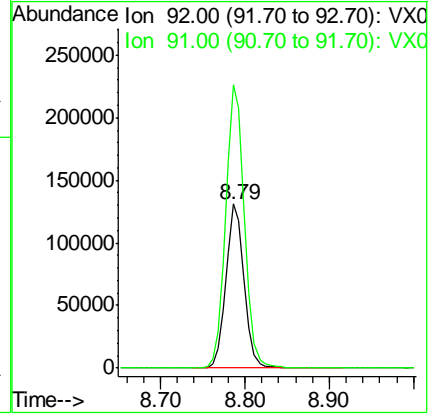
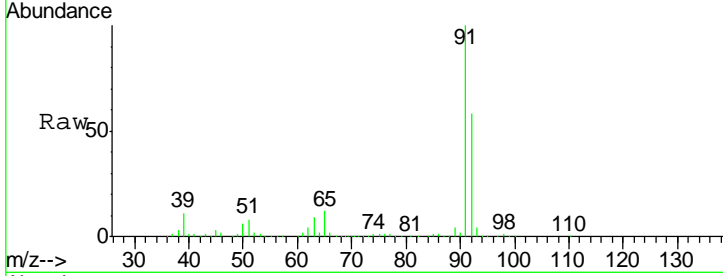




#52  
 Toluene  
 Concen: 27.21 ug/l  
 RT: 8.79 min Scan# 1345  
 Delta R.T. -0.00 min  
 Lab File: VX002362.D  
 Acq: 06 Jun 2018 19:29

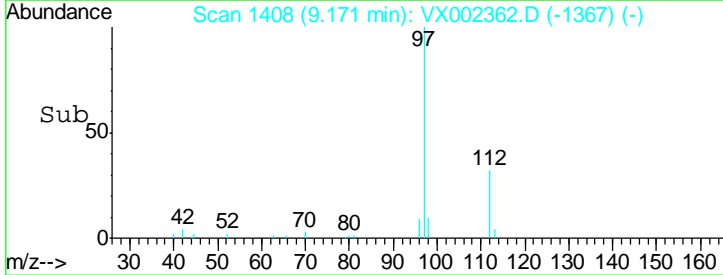
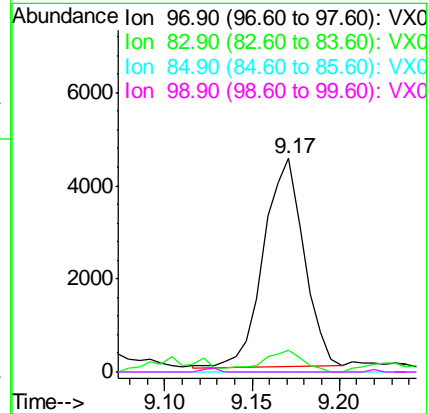
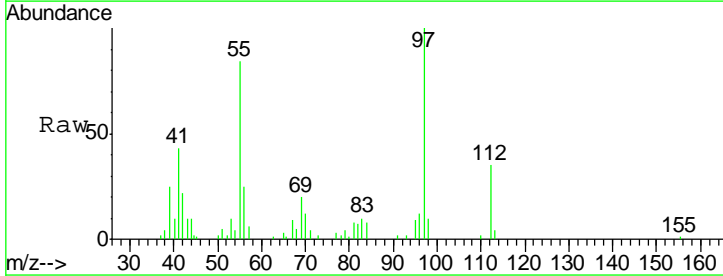
Instrument :  
 MSVOA\_X  
 ClientSampled :  
 PW-01

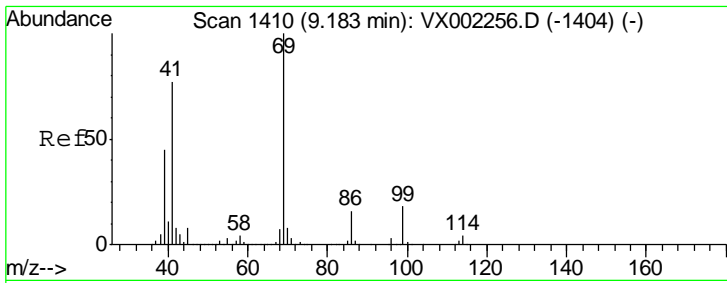
Tgt Ion	Resp	Lower	Upper
92	196404		
92	100		
91	177.0	140.4	210.6



#55  
 1,1,2-Trichloroethane  
 Concen: 2.43 ug/l  
 RT: 9.17 min Scan# 1408  
 Delta R.T. -0.05 min  
 Lab File: VX002362.D  
 Acq: 06 Jun 2018 19:29

Tgt Ion	Resp	Lower	Upper
97	7203		
97	100		
83	10.3	70.2	105.2#
85	0.0	44.9	67.3#
99	0.0	49.8	74.8#

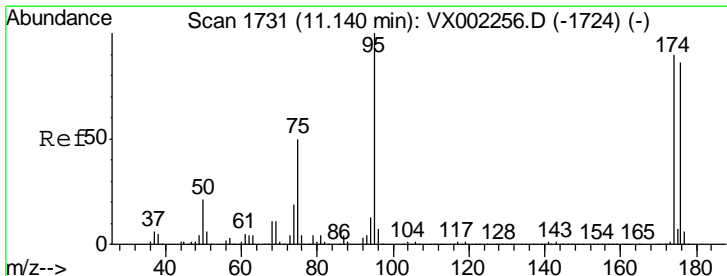
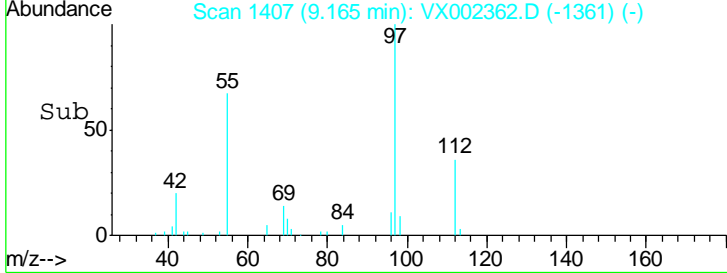
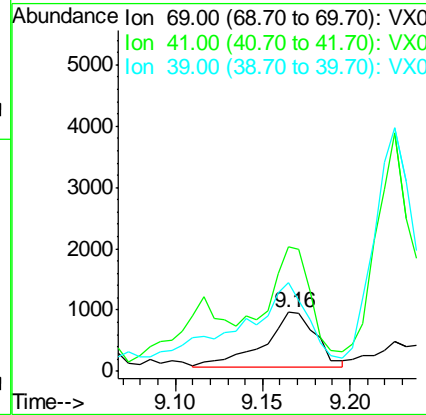
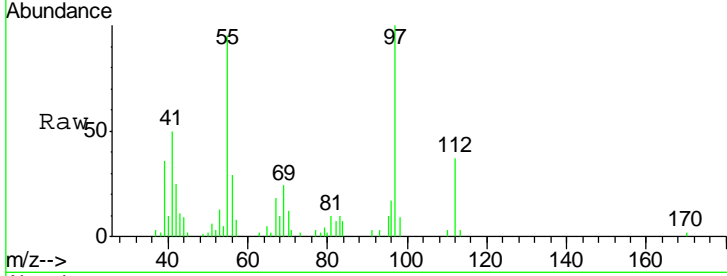




#56  
 Ethyl methacrylate  
 Concen: 0.39 ug/l  
 RT: 9.16 min Scan# 1407  
 Delta R.T. -0.02 min  
 Lab File: VX002362.D  
 Acq: 06 Jun 2018 19:29

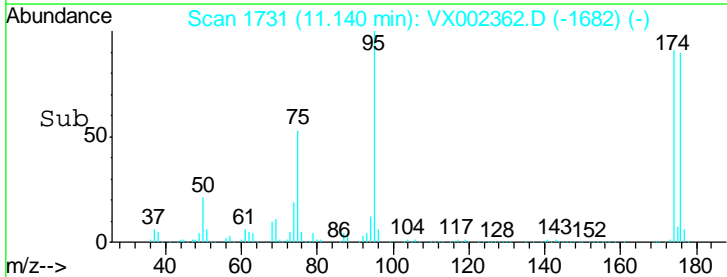
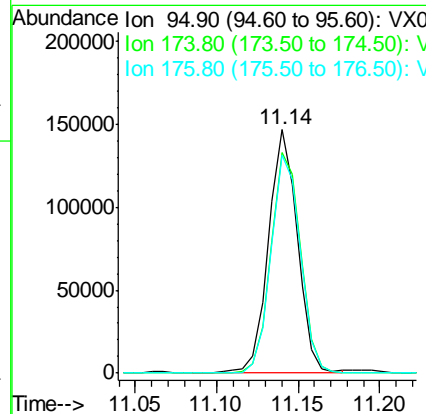
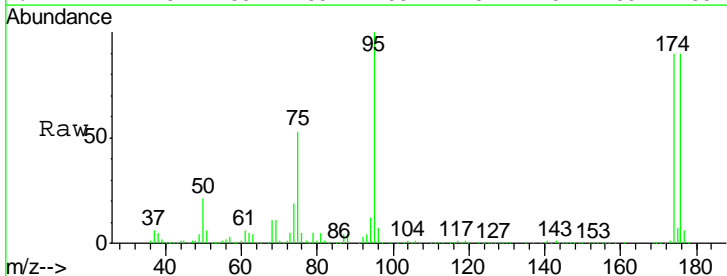
Instrument :  
 MSVOA\_X  
 ClientSampled :  
 PW-01

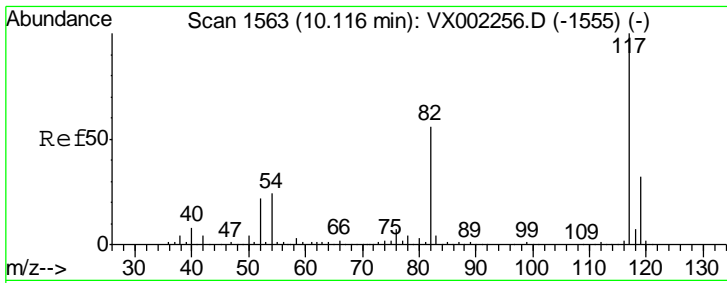
Tgt Ion	Resp	Lower	Upper
69	1851		
41	137.9	60.3	90.5#
39	175.7	35.8	53.8#



#62  
 4-Bromofluorobenzene  
 Concen: 43.97 ug/l  
 RT: 11.14 min Scan# 1731  
 Delta R.T. -0.00 min  
 Lab File: VX002362.D  
 Acq: 06 Jun 2018 19:29

Tgt Ion	Resp	Lower	Upper
95	179950		
174	93.1	0.0	187.4
176	91.1	0.0	181.0

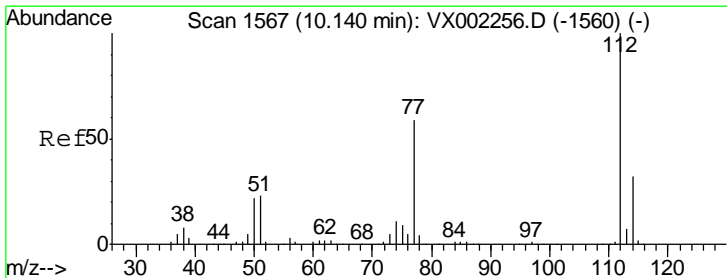
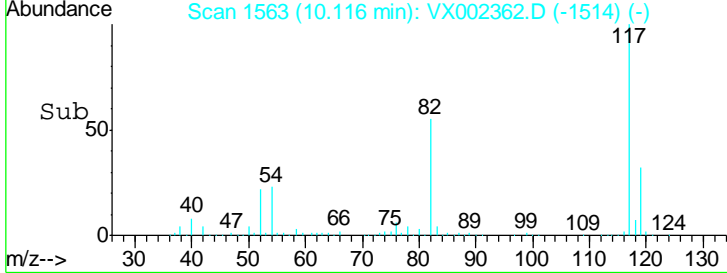
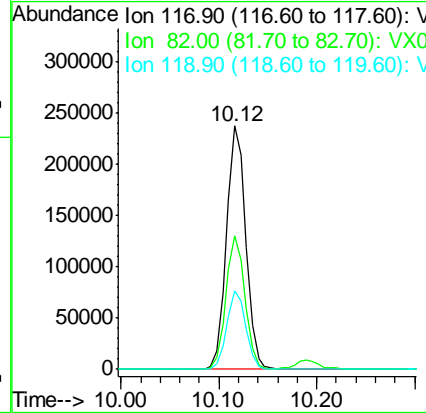
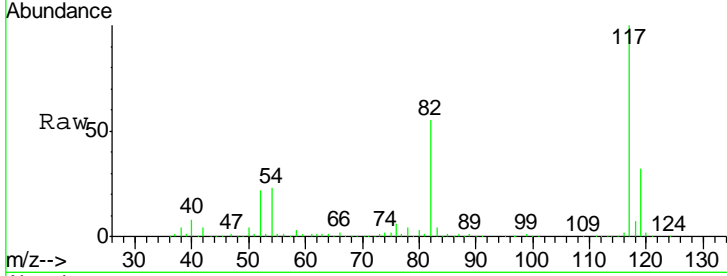




#63  
 Chlorobenzene-d5  
 Concen: 50.00 ug/l  
 RT: 10.12 min Scan# 1563  
 Delta R.T. -0.00 min  
 Lab File: VX002362.D  
 Acq: 06 Jun 2018 19:29

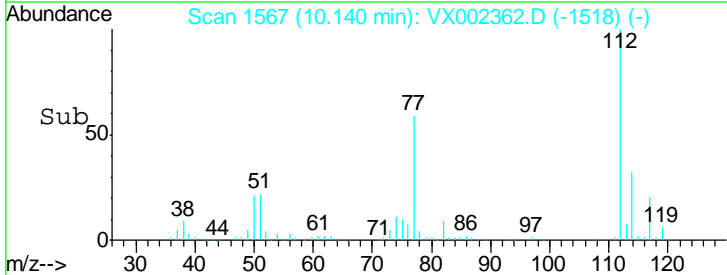
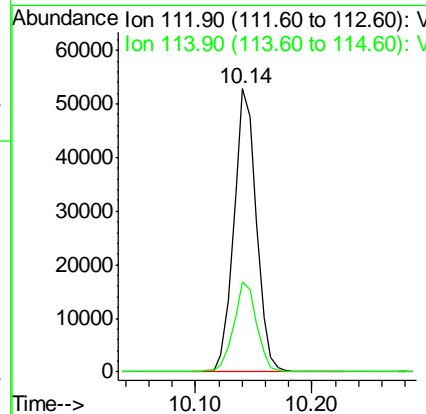
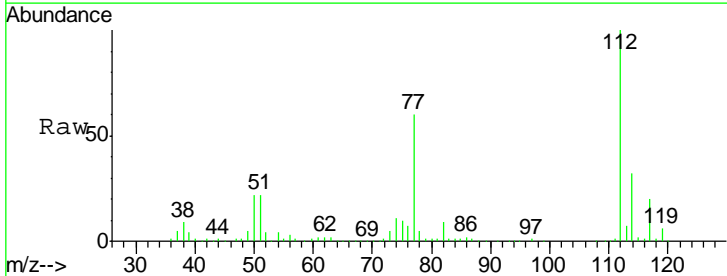
Instrument : MSVOA\_X  
 ClientSampled : PW-01

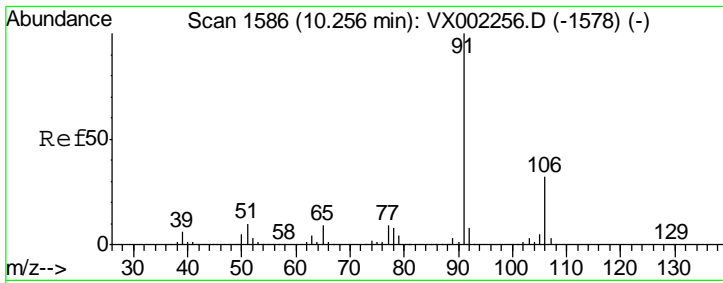
Tgt Ion	Resp	Lower	Upper
117	324641		
82	54.8	45.0	67.4
119	32.3	25.8	38.6



#65  
 Chlorobenzene  
 Concen: 8.77 ug/l  
 RT: 10.14 min Scan# 1567  
 Delta R.T. -0.00 min  
 Lab File: VX002362.D  
 Acq: 06 Jun 2018 19:29

Tgt Ion	Resp	Lower	Upper
112	70868		
114	31.9	25.3	37.9

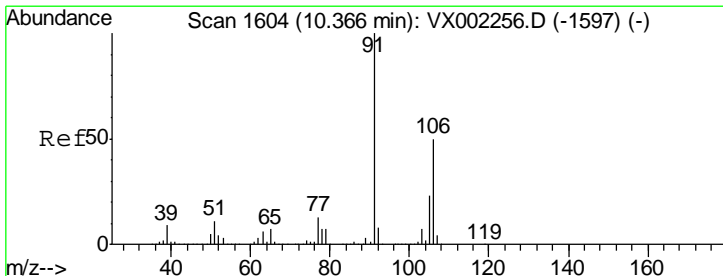
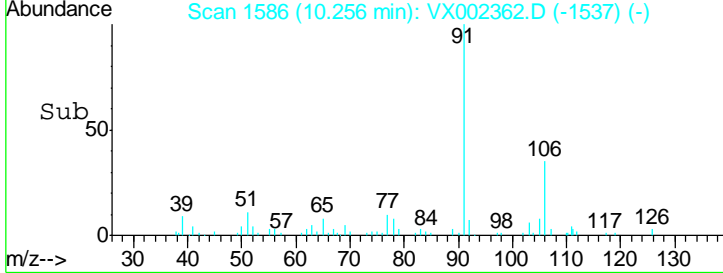
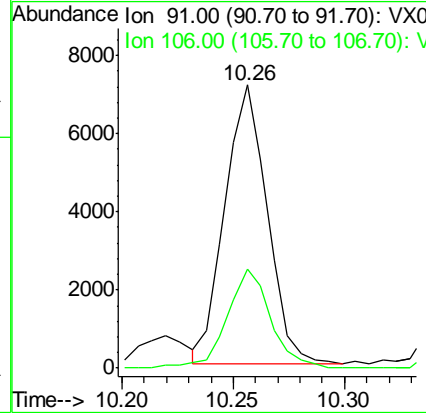
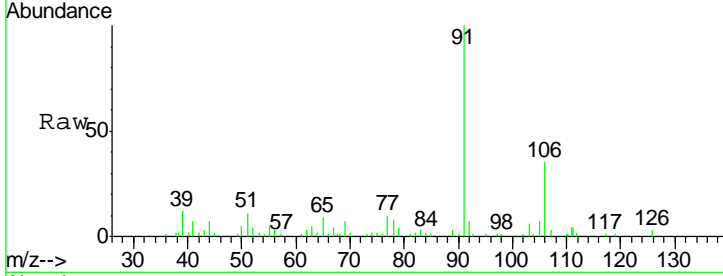




#67  
 Ethyl Benzene  
 Concen: 0.69 ug/l  
 RT: 10.26 min Scan# 1586  
 Delta R.T. -0.00 min  
 Lab File: VX002362.D  
 Acq: 06 Jun 2018 19:29

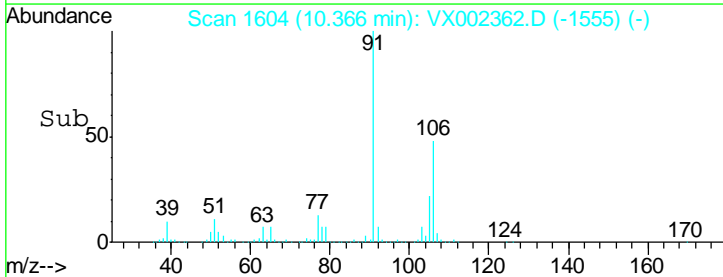
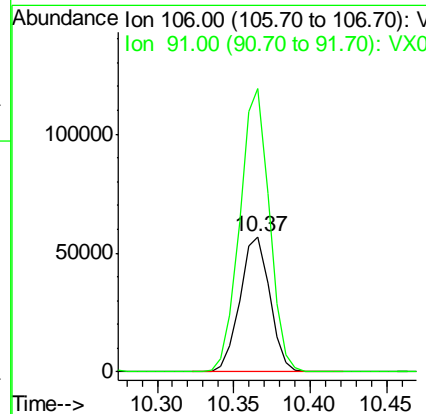
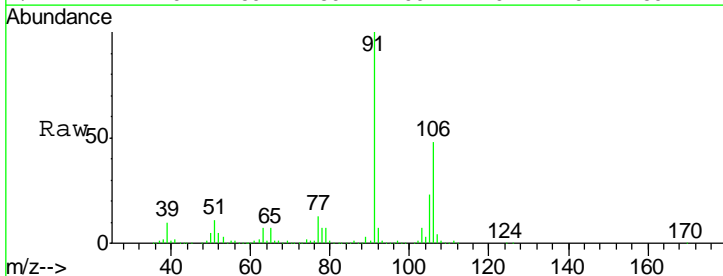
Instrument : MSVOA\_X  
 ClientSampled : PW-01

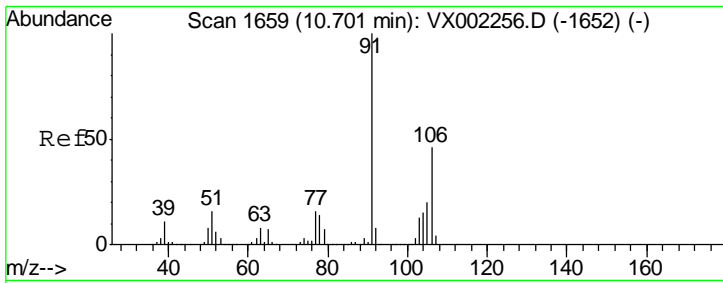
Tgt Ion	Resp	Lower	Upper
91	9363		
106	35.5	25.5	38.3



#68  
 m/p-Xylenes  
 Concen: 14.67 ug/l  
 RT: 10.37 min Scan# 1604  
 Delta R.T. -0.00 min  
 Lab File: VX002362.D  
 Acq: 06 Jun 2018 19:29

Tgt Ion	Resp	Lower	Upper
106	77092		
91	205.9	163.4	245.2

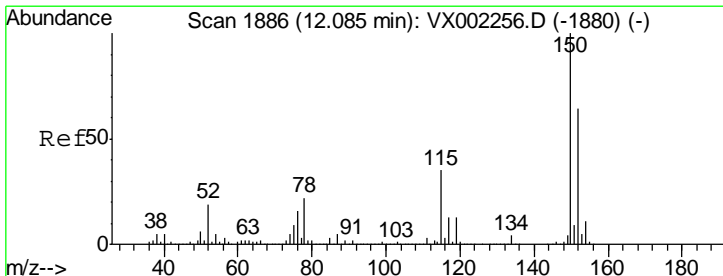
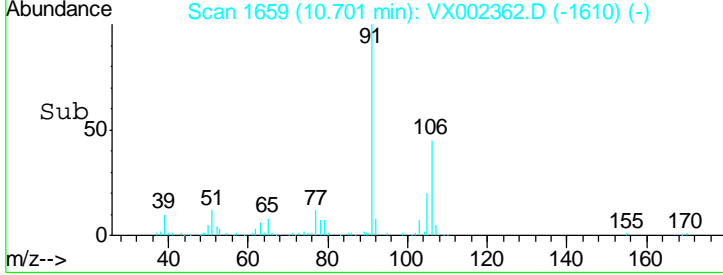
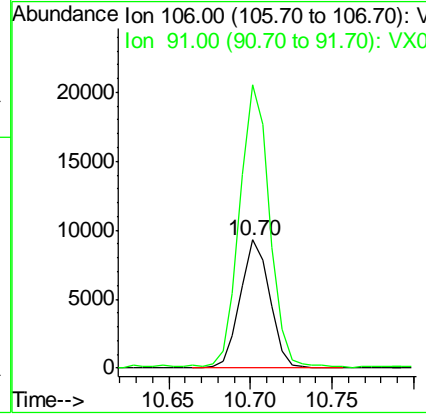
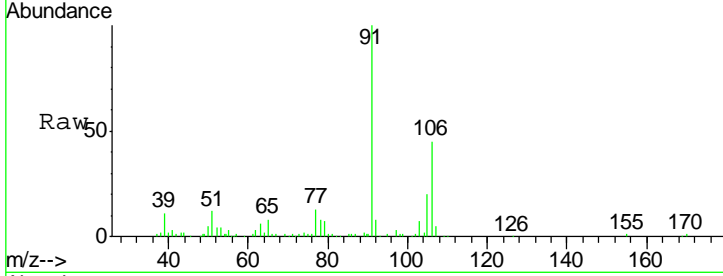




#69  
 o-Xylene  
 Concen: 2.25 ug/l  
 RT: 10.70 min Scan# 1659  
 Delta R.T. -0.00 min  
 Lab File: VX002362.D  
 Acq: 06 Jun 2018 19:29

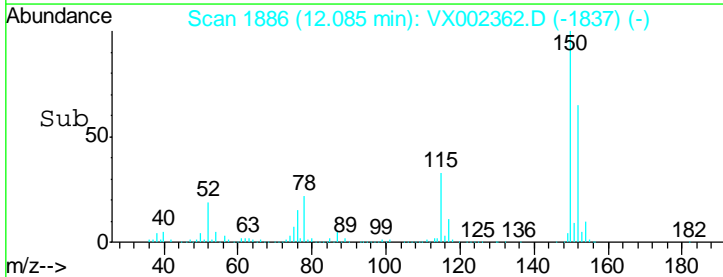
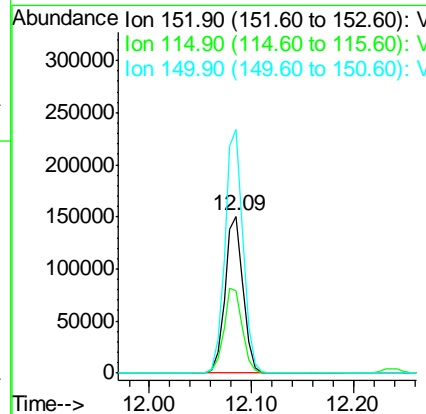
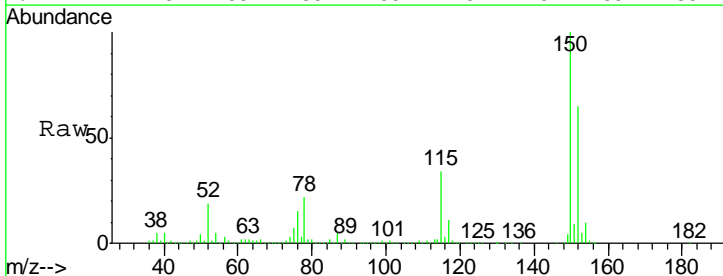
Instrument : MSVOA\_X  
 ClientSampled : PW-01

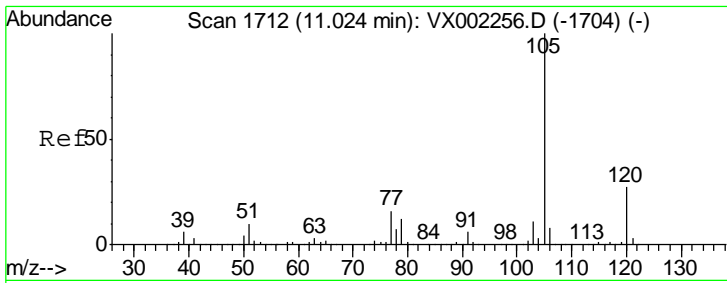
Tgt Ion: 106 Resp: 11776  
 Ion Ratio Lower Upper  
 106 100  
 91 222.0 108.2 324.6



#72  
 1,4-Dichlorobenzene-d4  
 Concen: 50.00 ug/l  
 RT: 12.09 min Scan# 1886  
 Delta R.T. -0.00 min  
 Lab File: VX002362.D  
 Acq: 06 Jun 2018 19:29

Tgt Ion: 152 Resp: 185095  
 Ion Ratio Lower Upper  
 152 100  
 115 55.1 40.1 120.2  
 150 156.6 0.0 347.2

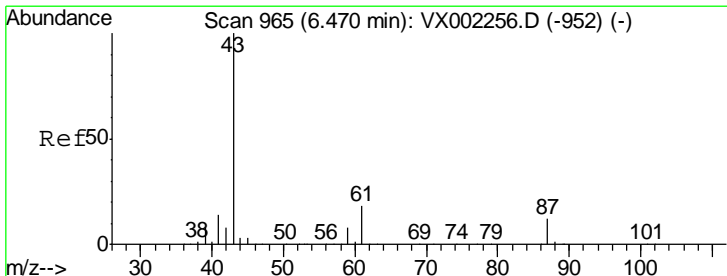
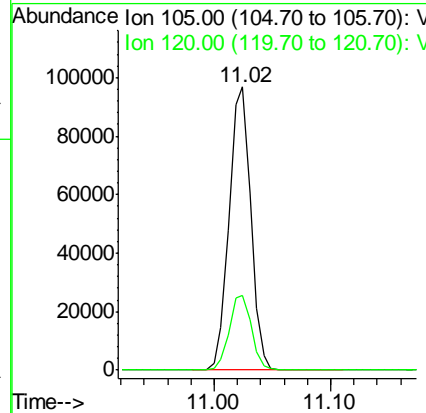
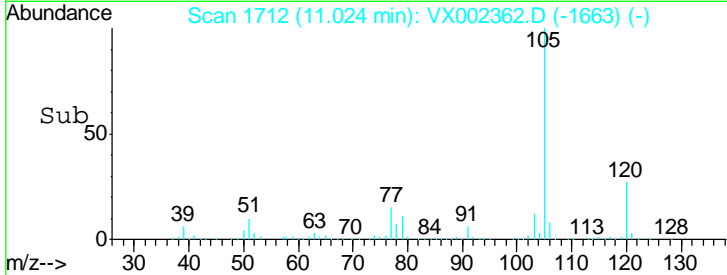
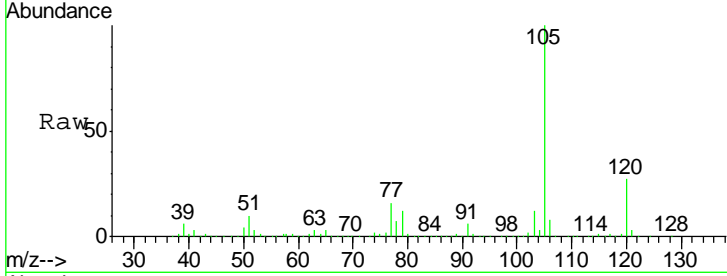




#73  
 Isopropylbenzene  
 Concen: 9.72 ug/l  
 RT: 11.02 min Scan# 1712  
 Delta R.T. -0.00 min  
 Lab File: VX002362.D  
 Acq: 06 Jun 2018 19:29

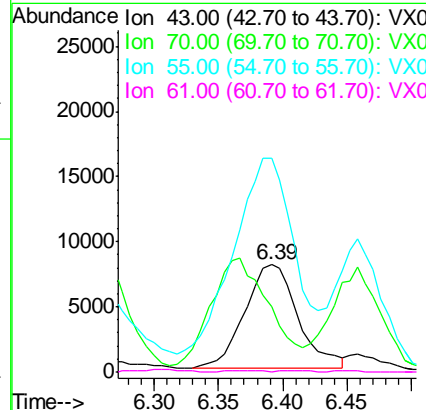
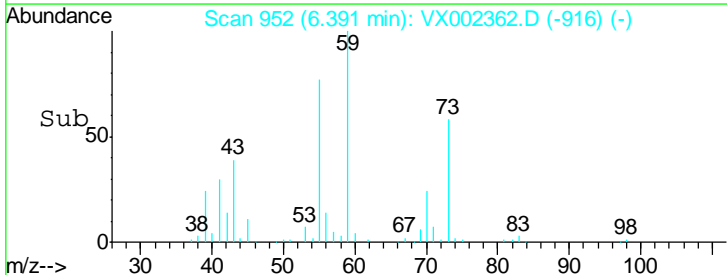
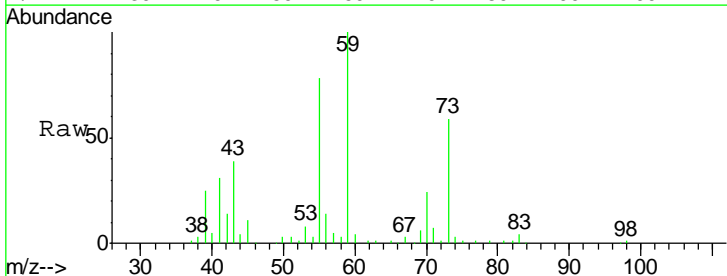
Instrument :  
 MSVOA\_X  
 ClientSampled :  
 PW-01

Tgt Ion	Resp	Lower	Upper
105	125115		
120	27.1	13.5	40.4

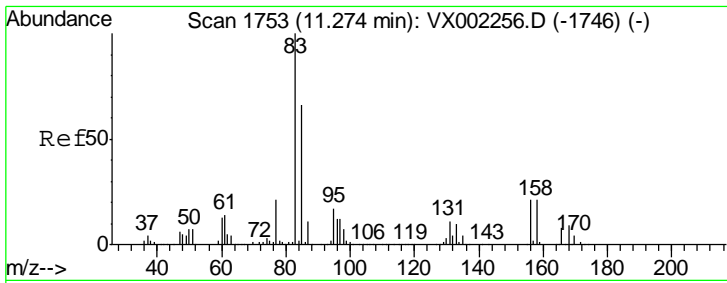


#74  
 N-aryl acetate  
 Concen: 3.29 ug/l  
 RT: 6.39 min Scan# 952  
 Delta R.T. -0.08 min  
 Lab File: VX002362.D  
 Acq: 06 Jun 2018 19:29

Tgt Ion	Resp	Lower	Upper
43	22846		
70	0.0	0.0	0.0
55	243.1	0.0	0.0#
61	0.9	14.4	21.6#



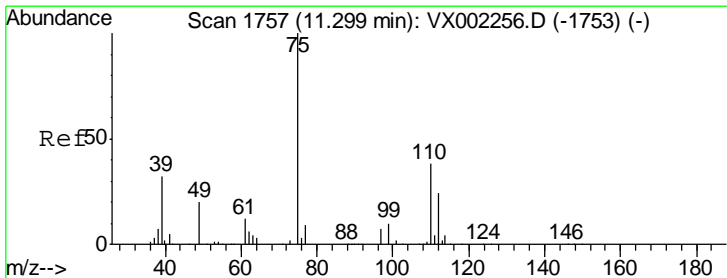
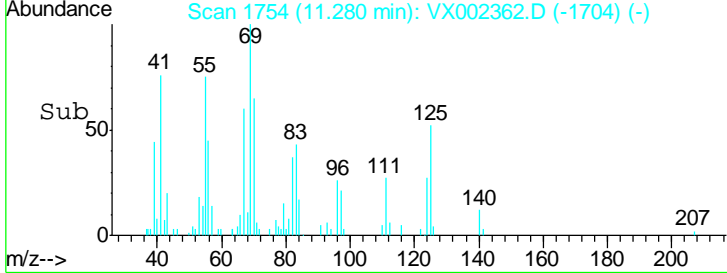
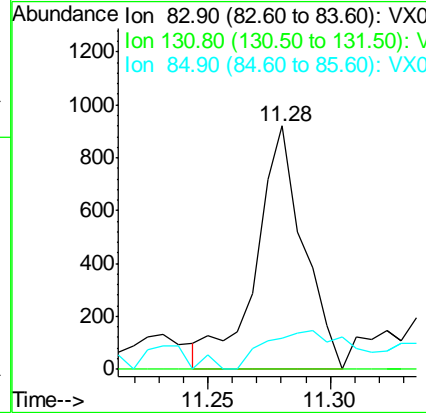
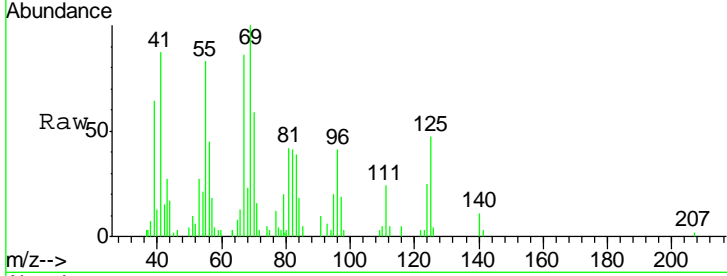




#75  
 1,1,2,2-Tetrachloroethane  
 Concen: 0.30 ug/l  
 RT: 11.28 min Scan# 1754  
 Delta R.T. 0.01 min  
 Lab File: VX002362.D  
 Acq: 06 Jun 2018 19:29

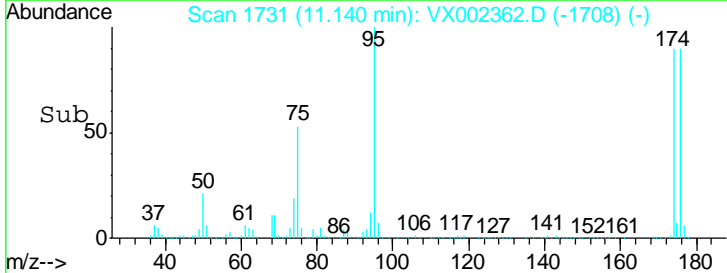
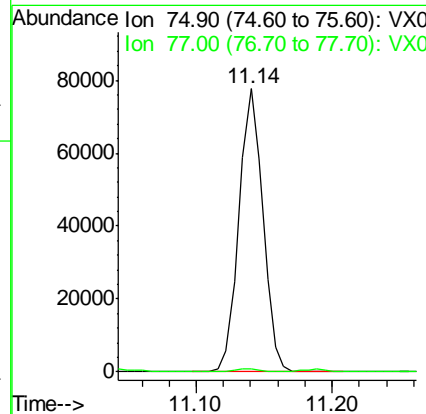
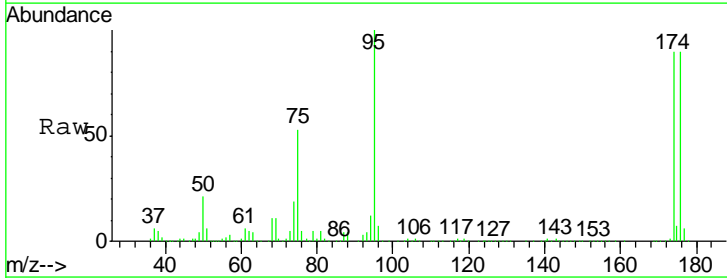
Instrument :  
 MSVOA\_X  
 ClientSampleID :  
 PW-01

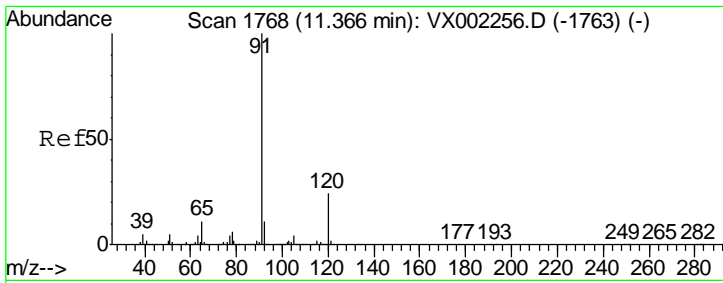
Tgt Ion	Resp	Lower	Upper
83	1233		
131	0.0	5.6	16.8#
85	28.4	32.4	97.2#



#76  
 1,2,3-Trichloropropane  
 Concen: 23.51 ug/l  
 RT: 11.14 min Scan# 1731  
 Delta R.T. -0.16 min  
 Lab File: VX002362.D  
 Acq: 06 Jun 2018 19:29

Tgt Ion	Resp	Lower	Upper
75	95469		
77	1.1	22.8	68.3#

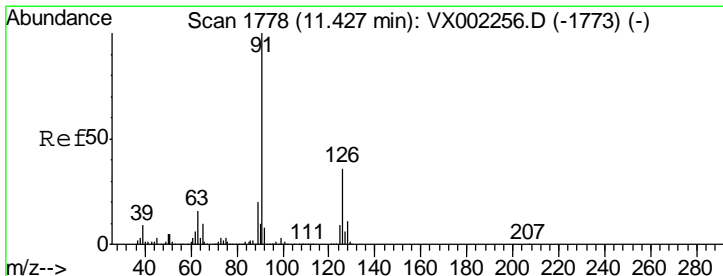
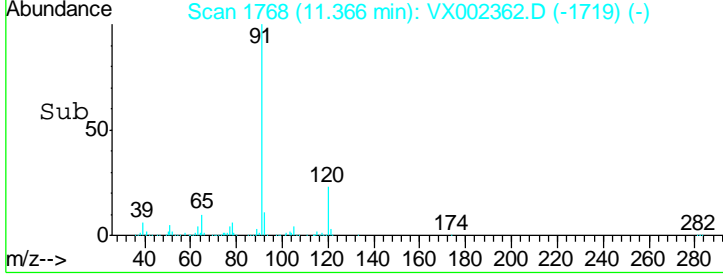
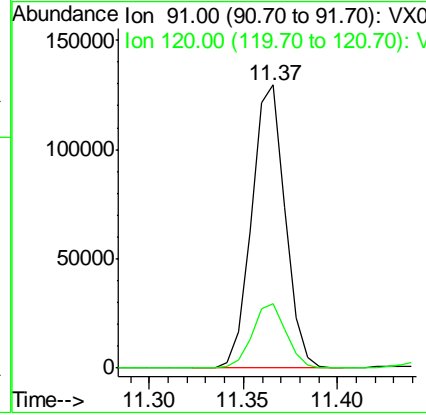
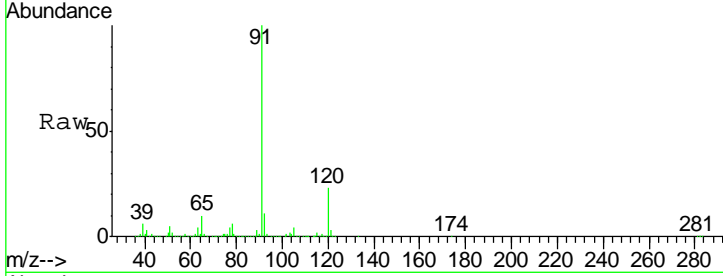




#78  
 n-propylbenzene  
 Concen: 11.11 ug/l  
 RT: 11.37 min Scan# 1768  
 Delta R.T. -0.00 min  
 Lab File: VX002362.D  
 Acq: 06 Jun 2018 19:29

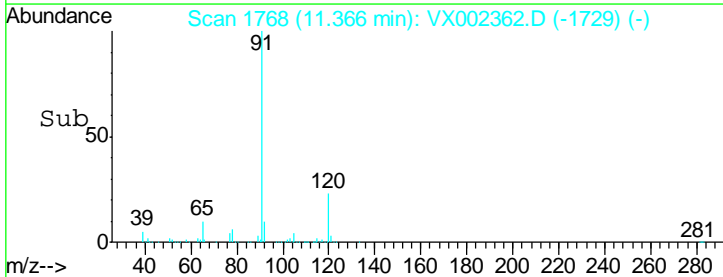
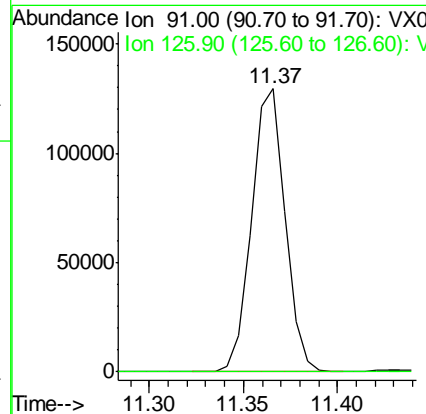
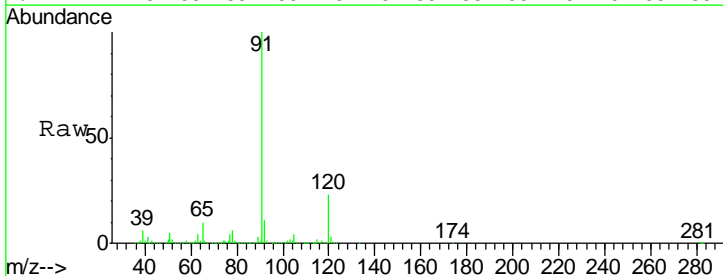
Instrument : MSVOA\_X  
 ClientSampled : PW-01

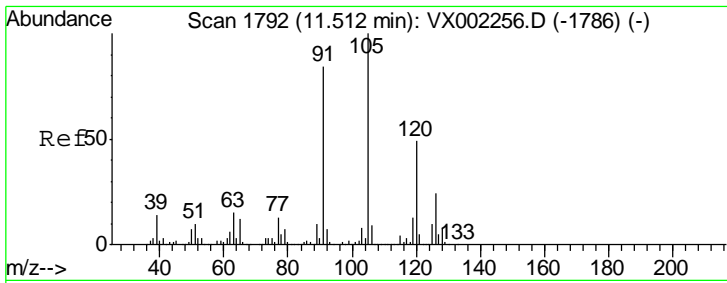
Tgt Ion	Resp	Lower	Upper
91	100		
120	23.0	11.8	35.4



#79  
 2-Chlorotoluene  
 Concen: 17.60 ug/l  
 RT: 11.37 min Scan# 1768  
 Delta R.T. -0.06 min  
 Lab File: VX002362.D  
 Acq: 06 Jun 2018 19:29

Tgt Ion	Resp	Lower	Upper
91	100		
126	0.0	17.7	53.1#

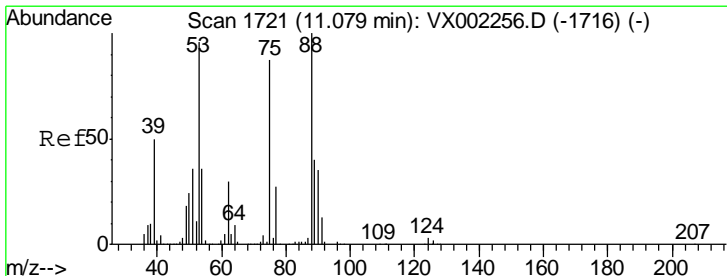
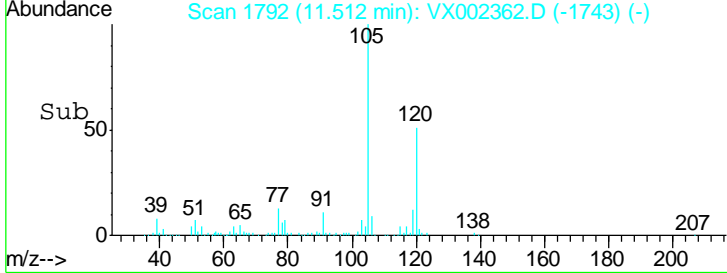
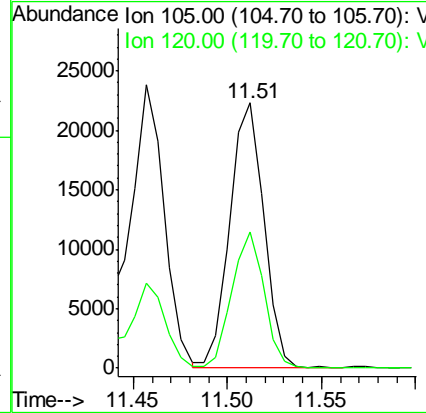
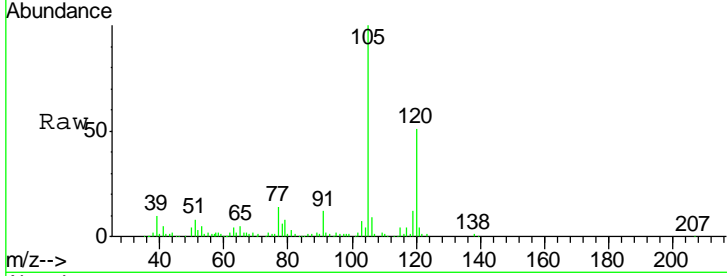




#80  
 1,3,5-Trimethylbenzene  
 Concen: 2.52 ug/l  
 RT: 11.51 min Scan# 1792  
 Delta R.T. -0.00 min  
 Lab File: VX002362.D  
 Acq: 06 Jun 2018 19:29

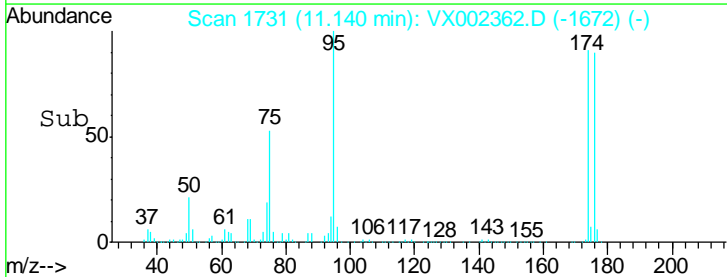
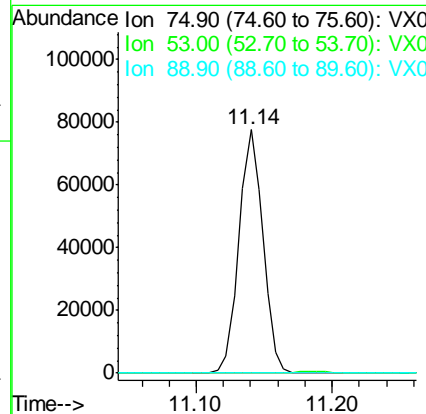
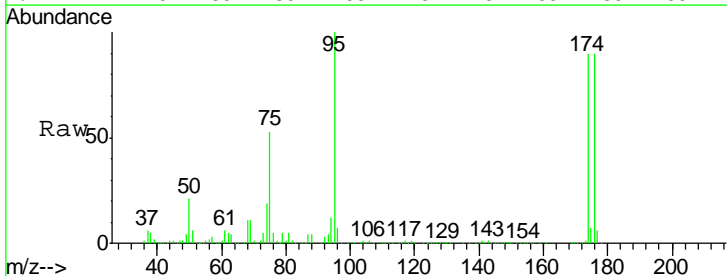
Instrument : MSVOA\_X  
 ClientSampled : PW-01

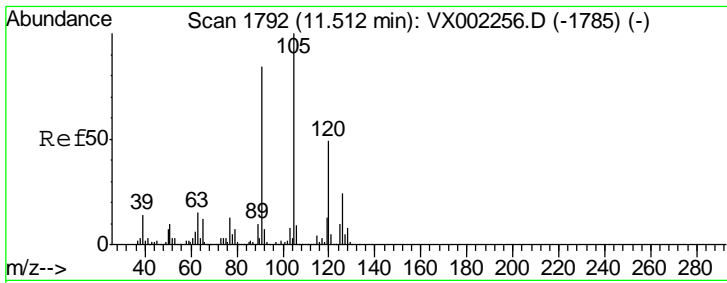
Tgt Ion	Resp	Lower	Upper
105	27851		
120	49.1	24.4	73.4



#81  
 trans-1,4-Dichloro-2-butene  
 Concen: 82.40 ug/l  
 RT: 11.14 min Scan# 1731  
 Delta R.T. 0.06 min  
 Lab File: VX002362.D  
 Acq: 06 Jun 2018 19:29

Tgt Ion	Resp	Lower	Upper
75	95469		
53	0.0	86.8	130.2#
89	0.0	38.2	57.2#

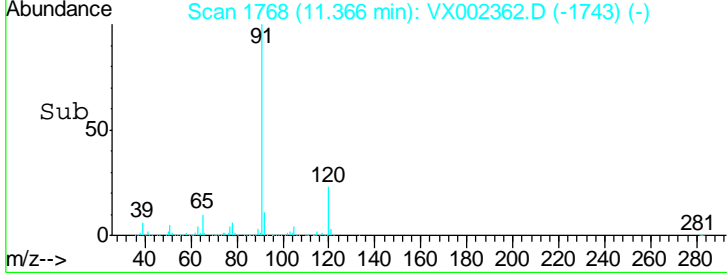
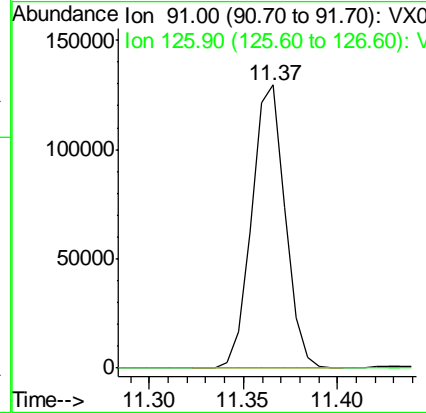
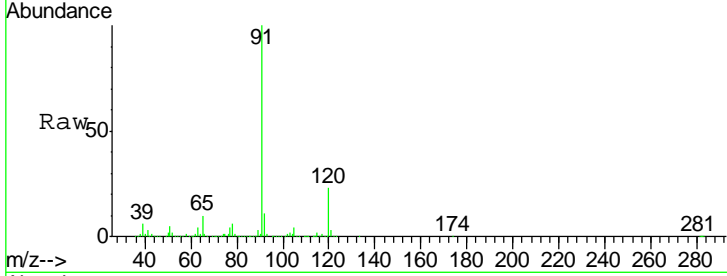




#82  
 4-Chlorotoluene  
 Concen: 15.25 ug/l  
 RT: 11.37 min Scan# 1768  
 Delta R.T. -0.15 min  
 Lab File: VX002362.D  
 Acq: 06 Jun 2018 19:29

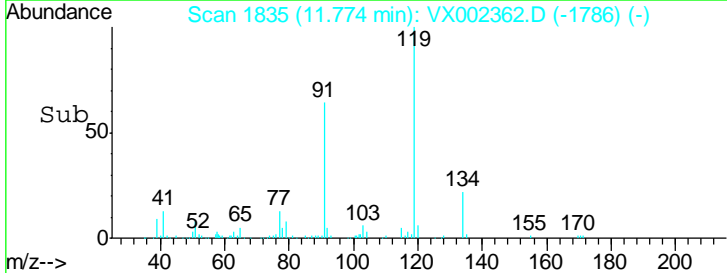
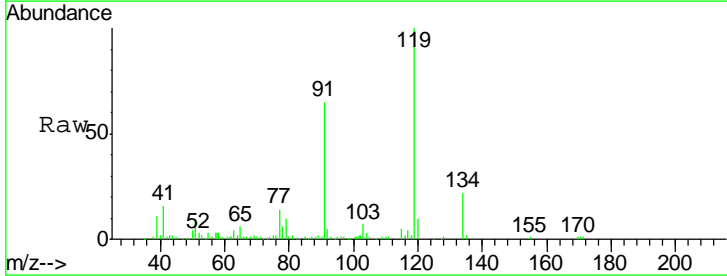
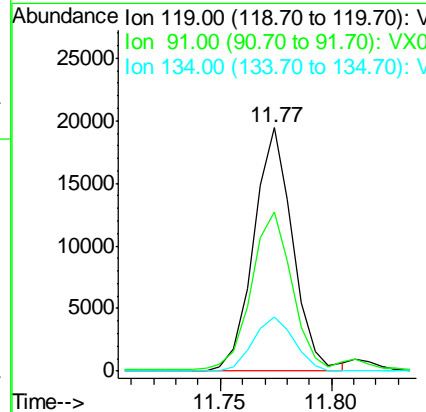
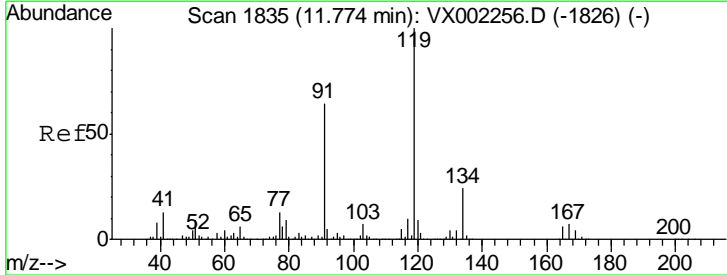
Instrument :  
 MSVOA\_X  
 ClientSampled :  
 PW-01

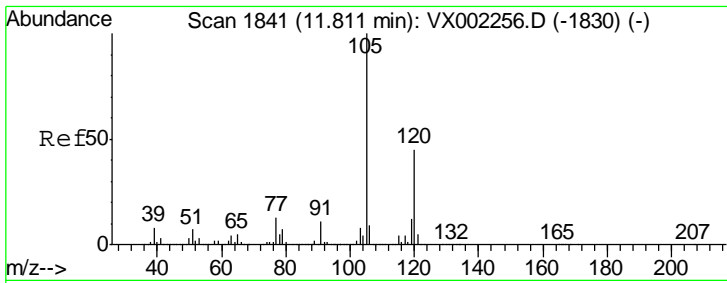
Tgt Ion: 91 Resp: 159071  
 Ion Ratio Lower Upper  
 91 100  
 126 0.0 15.4 46.4#



#83  
 tert-Butylbenzene  
 Concen: 2.21 ug/l  
 RT: 11.77 min Scan# 1835  
 Delta R.T. -0.00 min  
 Lab File: VX002362.D  
 Acq: 06 Jun 2018 19:29

Tgt Ion: 119 Resp: 23734  
 Ion Ratio Lower Upper  
 119 100  
 91 67.7 30.3 90.9  
 134 23.2 11.7 35.1

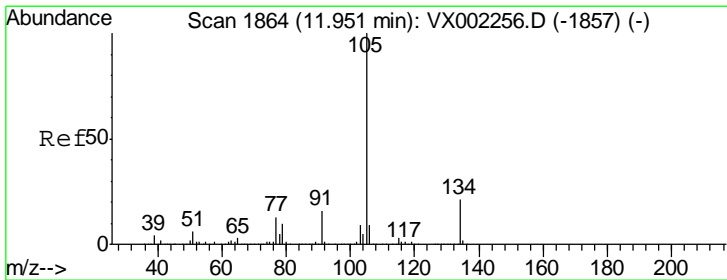
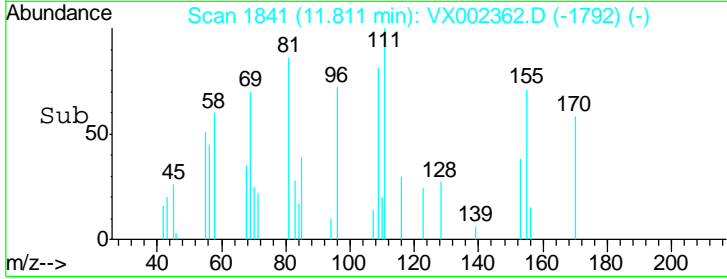
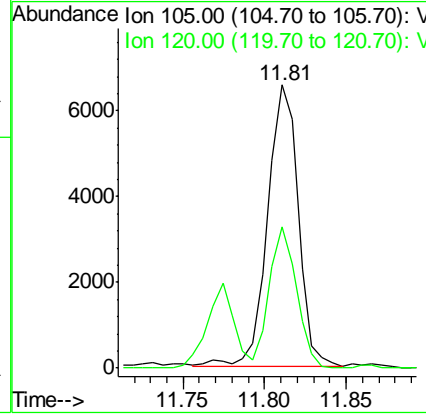
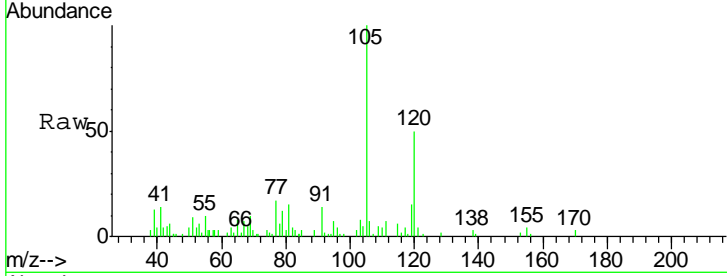




#84  
 1,2,4-Trimethylbenzene  
 Concen: 0.75 ug/l  
 RT: 11.81 min Scan# 1841  
 Delta R.T. -0.00 min  
 Lab File: VX002362.D  
 Acq: 06 Jun 2018 19:29

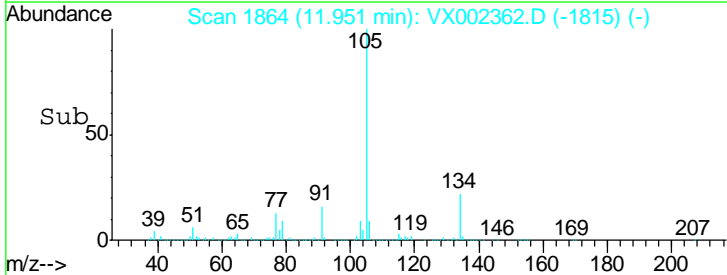
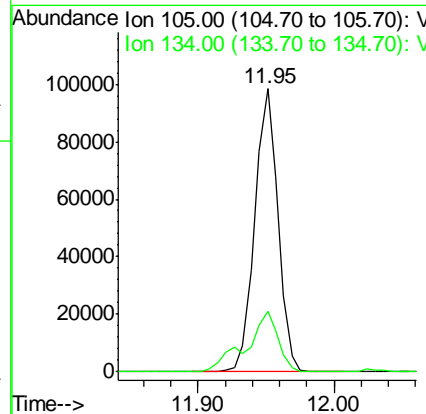
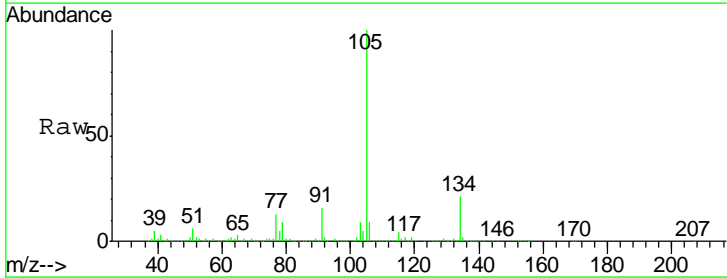
Instrument :  
 MSVOA\_X  
 ClientSampled :  
 PW-01

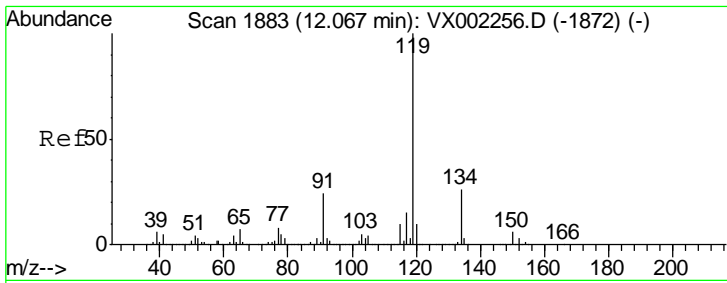
Tgt Ion:105 Resp: 8531  
 Ion Ratio Lower Upper  
 105 100  
 120 44.8 22.3 66.8



#85  
 sec-Butylbenzene  
 Concen: 9.36 ug/l  
 RT: 11.95 min Scan# 1864  
 Delta R.T. -0.00 min  
 Lab File: VX002362.D  
 Acq: 06 Jun 2018 19:29

Tgt Ion:105 Resp: 118029  
 Ion Ratio Lower Upper  
 105 100  
 134 29.3 10.4 31.1

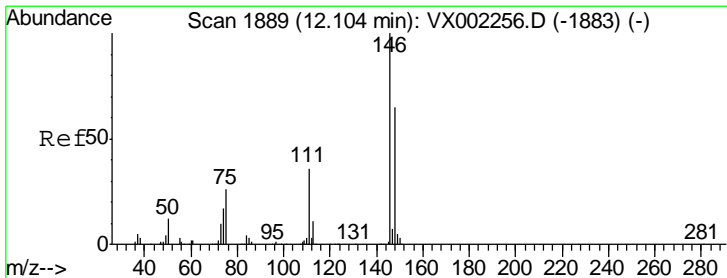
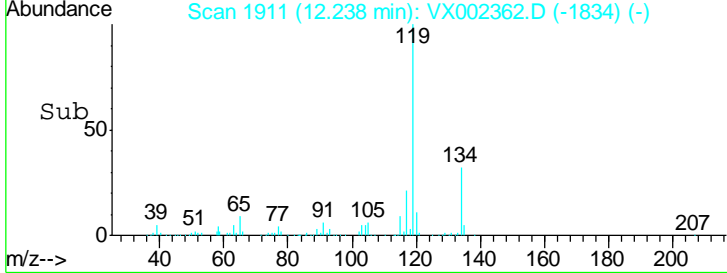
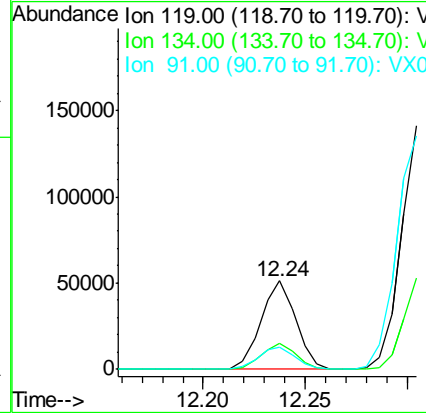
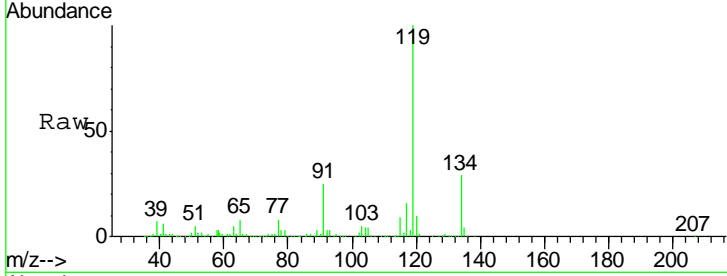




#86  
 p-Isopropyltoluene  
 Concen: 5.35 ug/l  
 RT: 12.24 min Scan# 1911  
 Delta R.T. 0.17 min  
 Lab File: VX002362.D  
 Acq: 06 Jun 2018 19:29

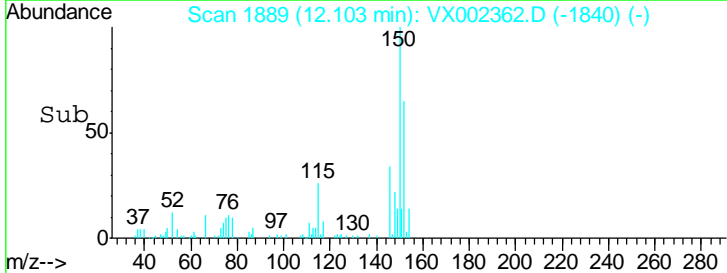
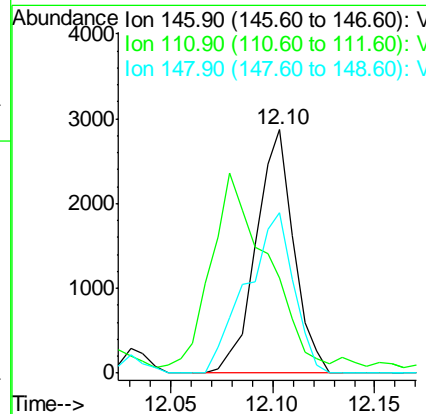
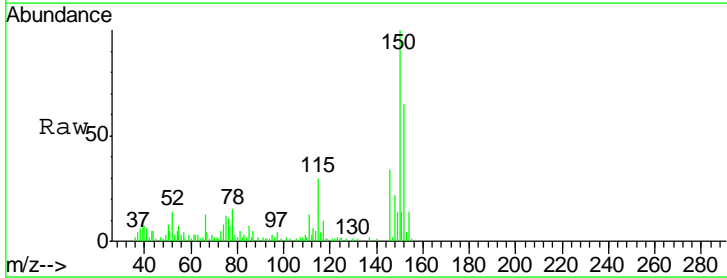
Instrument :  
 MSVOA\_X  
 ClientSampled :  
 PW-01

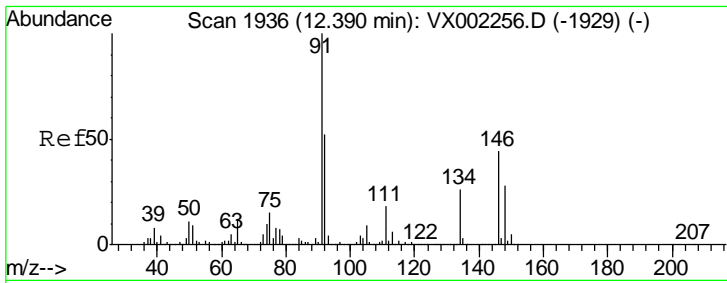
Tgt Ion	Resp	Lower	Upper
119	61416		
134	28.9	13.4	40.1
91	25.5	11.9	35.7



#88  
 1,4-Dichlorobenzene  
 Concen: 0.55 ug/l  
 RT: 12.10 min Scan# 1889  
 Delta R.T. -0.00 min  
 Lab File: VX002362.D  
 Acq: 06 Jun 2018 19:29

Tgt Ion	Resp	Lower	Upper
146	3690		
111	0.0	18.7	56.1#
148	82.5	32.4	97.0

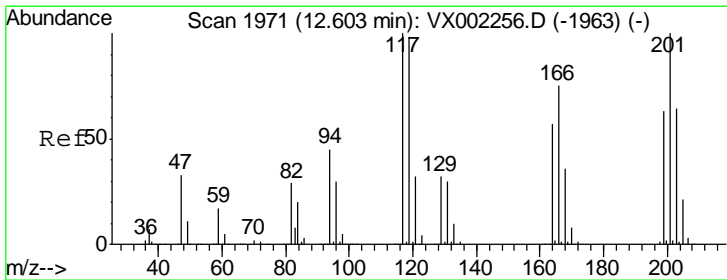
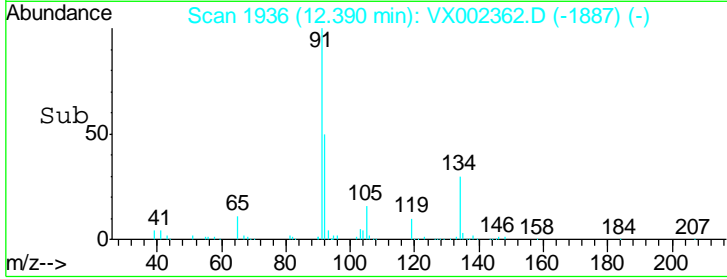
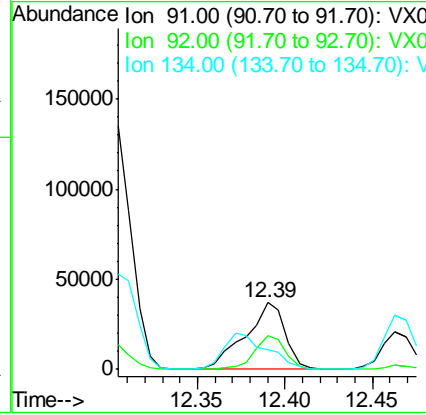
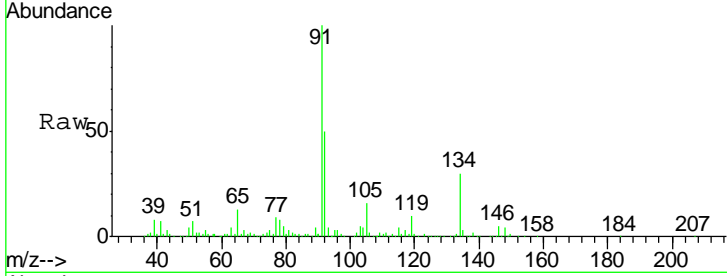




#89  
 n-Butylbenzene  
 Concen: 6.03 ug/l  
 RT: 12.39 min Scan# 1936  
 Delta R.T. -0.00 min  
 Lab File: VX002362.D  
 Acq: 06 Jun 2018 19:29

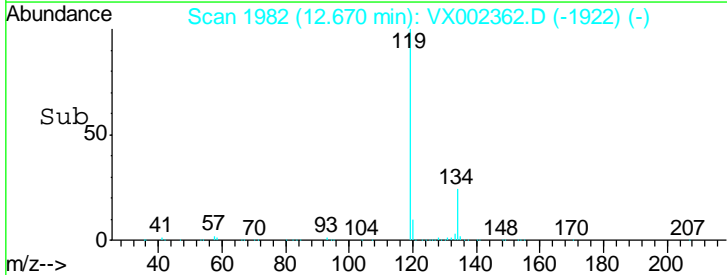
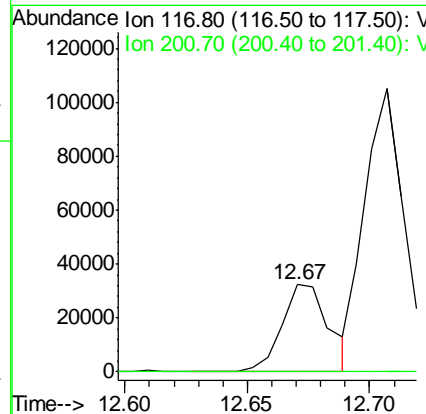
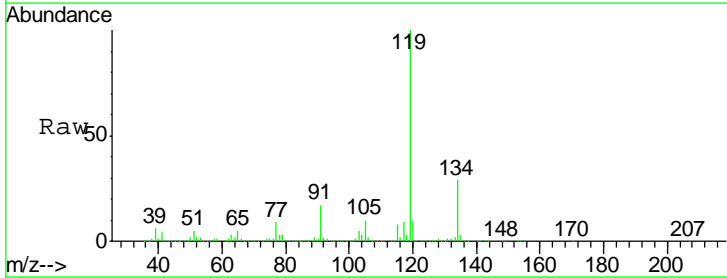
Instrument : MSVOA\_X  
 ClientSampled : PW-01

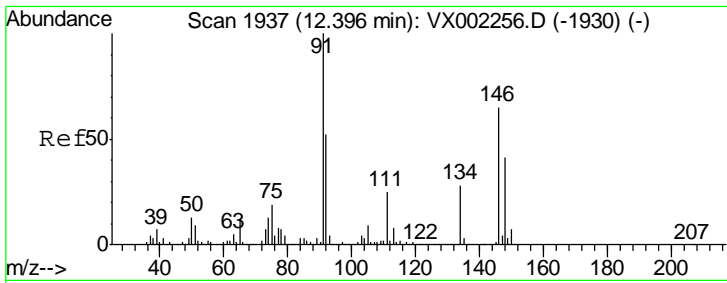
Tgt Ion	Resp	Lower	Upper
91	100		
92	40.1	26.0	78.0
134	58.9	13.5	40.5#



#90  
 Hexachloroethane  
 Concen: 23.30 ug/l  
 RT: 12.67 min Scan# 1982  
 Delta R.T. 0.07 min  
 Lab File: VX002362.D  
 Acq: 06 Jun 2018 19:29

Tgt Ion	Resp	Lower	Upper
117	100		
201	0.0	49.0	147.0#

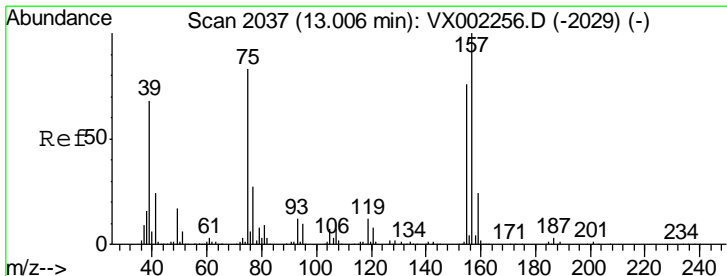
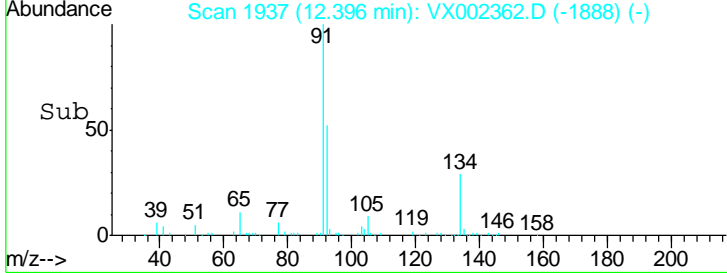
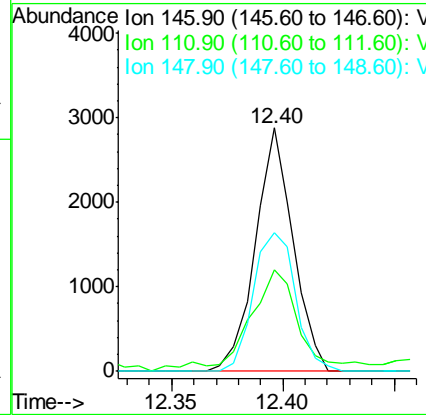
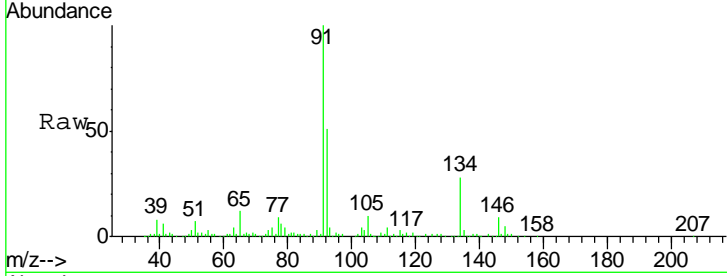




#91  
 1,2-Dichlorobenzene  
 Concen: 0.51 ug/l  
 RT: 12.40 min Scan# 1937  
 Delta R.T. -0.00 min  
 Lab File: VX002362.D  
 Acq: 06 Jun 2018 19:29

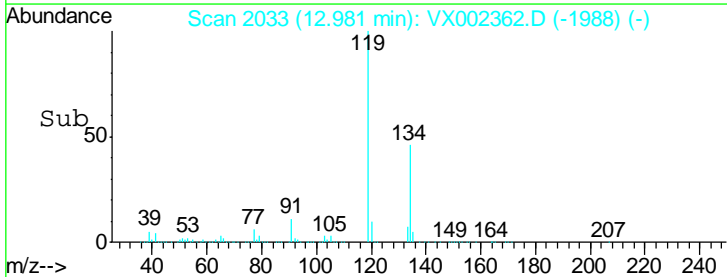
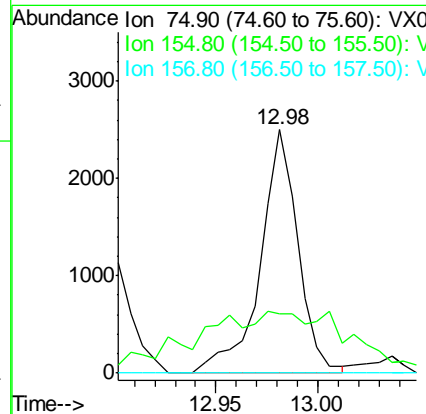
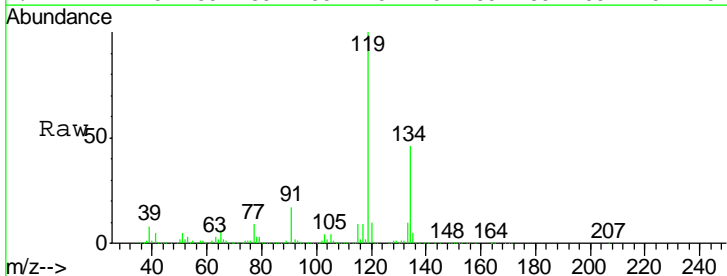
Instrument :  
 MSVOA\_X  
 ClientSampled :  
 PW-01

Tgt Ion	Resp	Lower	Upper
146	3388		
146	100		
111	56.9	19.4	58.1
148	64.1	31.7	95.1

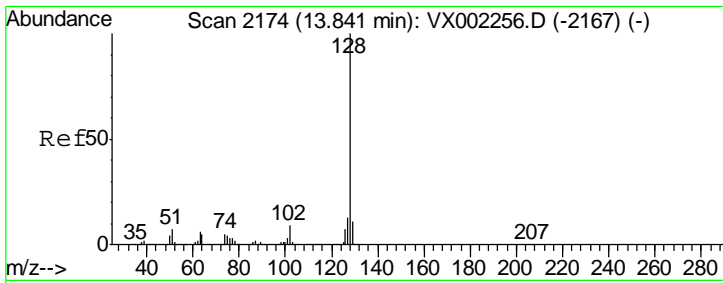


#92  
 1,2-Dibromo-3-Chloropropane  
 Concen: 3.65 ug/l  
 RT: 12.98 min Scan# 2033  
 Delta R.T. -0.02 min  
 Lab File: VX002362.D  
 Acq: 06 Jun 2018 19:29

Tgt Ion	Resp	Lower	Upper
75	3230		
75	100		
155	60.6	45.8	137.4
157	0.0	60.1	180.3#







#95  
 Naphthalene  
 Concen: 0.36 ug/l  
 RT: 13.85 min Scan# 2175  
 Delta R.T. 0.01 min  
 Lab File: VX002362.D  
 Acq: 06 Jun 2018 19:29

Instrument : MSVOA\_X  
 ClientSampled : PW-01

Tot Ion	128	127	129
Resp:	4839		
Ion Ratio	100	22.6	58.4
Lower		10.4	8.6
Upper		15.6#	13.0#

