

Data Path : Z:\VOASRV\HPCHEM1\MSVOA X\DATA\VX060618\
 Data File : VX002364.D
 Acq On : 06 Jun 2018 20:22
 Operator : JC/MD
 Sample : J3312-07
 Misc : 5.0mL/MSVOA X/WATER
 ALS Vial : 23 Sample Multiplier: 1

Instrument :
 MSVOA_X
 ClientSampled :

Quant Time: Jun 07 03:26:52 2018
 Quant Method : Z:\VOASRV\HPCHEM1\MSVOA_X\METHOD\82X060418W.M
 Quant Title : SW846 8260
 QLast Update : Tue Jun 05 03:22:35 2018
 Response via : Initial Calibration

Internal Standards	R.T.	QIon	Response	Conc	Units	Dev(Min)
1) Pentafluorobenzene	5.67	168	231488	50.00	ug/l	0.00
34) 1,4-Difluorobenzene	6.87	114	332698	50.00	ug/l	0.00
63) Chlorobenzene-d5	10.12	117	301401	50.00	ug/l	0.00
72) 1,4-Dichlorobenzene-d4	12.09	152	164671	50.00	ug/l	0.00

System Monitoring Compounds

33) 1,2-Dichloroethane-d4	6.07	65	157389	47.36	ug/l	0.00
Spiked Amount	50.000		Recovery	=	94.72%	
35) Dibromofluoromethane	5.51	113	117708	44.99	ug/l	0.00
Spiked Amount	50.000		Recovery	=	89.98%	
50) Toluene-d8	8.72	98	478630	47.73	ug/l	0.00
Spiked Amount	50.000		Recovery	=	95.46%	
62) 4-Bromofluorobenzene	11.14	95	164535	42.55	ug/l	0.00
Spiked Amount	50.000		Recovery	=	85.10%	

Target Compounds

						Qvalue
3) Chloromethane	1.32	50	4447	Below Cal	#	56
5) Bromomethane	1.66	94	795	Below Cal		82
6) Chloroethane	1.99	64	603	0.31	ug/l #	54
8) Diethyl Ether	2.30	74	94	Below Cal		99
10) Methyl Iodide	2.52	142	772	0.22	ug/l #	81
11) Tert butyl alcohol	3.06	59	1973	Below Cal	#	87
13) Acrolein	2.32	56	104	Below Cal	#	14
15) Acrylonitrile	3.17	53	396	Below Cal	#	36
16) Acetone	2.45	43	7409	Below Cal		93
18) Methyl Acetate	2.78	43	199	Below Cal	#	19
19) Methyl tert-butyl Ether	3.20	73	457	Below Cal	#	40
20) Methylene Chloride	2.86	84	1149	Below Cal	#	91
22) Diisopropyl ether	3.89	45	135	Below Cal	#	48
25) 2-Butanone	4.72	43	1030	0.45	ug/l #	88
28) Bromochloromethane	5.02	49	27	Below Cal	#	13
31) Cyclohexane	5.58	56	1545	0.37	ug/l #	74
36) 1,1-Dichloropropene	5.67	75	16478	4.71	ug/l #	50
38) Carbon Tetrachloride	5.67	117	21592	5.90	ug/l #	15
39) Methylcyclohexane	7.46	83	2183	0.77	ug/l	91
55) 1,1,2-Trichloroethane	9.17	97	2895	1.03	ug/l #	23
73) Isopropylbenzene	11.02	105	61364	5.36	ug/l	100
75) 1,1,2,2-Tetrachloroethane	11.28	83	940	0.26	ug/l #	43
76) 1,2,3-Trichloropropane	11.14	75	88109	24.38	ug/l #	33
78) n-propylbenzene	11.37	91	44594	3.50	ug/l	100
79) 2-Chlorotoluene	11.37	91	44594	5.55	ug/l #	40
81) trans-1,4-Dichloro-2-buten	11.14	75	88109	85.48	ug/l #	6
82) 4-Chlorotoluene	11.37	91	44594	4.81	ug/l #	44
83) tert-Butylbenzene	11.77	119	12704	1.33	ug/l	89
84) 1,2,4-Trimethylbenzene	11.95	105	66163	6.54	ug/l #	32
85) sec-Butylbenzene	11.95	105	66163	5.90	ug/l	99
86) p-Isopropyltoluene	12.24	119	23956	2.34	ug/l	95
89) n-Butylbenzene	12.39	91	19206	2.24	ug/l	95
90) Hexachloroethane	12.71	117	46621	28.59	ug/l #	1
92) 1,2-Dibromo-3-Chloropropan	13.03	75	207	0.26	ug/l #	1

Data Path : Z:\VOASRV\HPCHEM1\MSVOA X\DATA\VX060618\
 Data File : VX002364.D
 Acq On : 06 Jun 2018 20:22
 Operator : JC/MD
 Sample : J3312-07
 Misc : 5.0mL/MSVOA X/WATER
 ALS Vial : 23 Sample Multiplier: 1

Instrument :
 MSVOA_X
 ClientSampleId :

Quant Time: Jun 07 03:26:52 2018
 Quant Method : Z:\VOASRV\HPCHEM1\MSVOA_X\METHOD\82X060418W.M
 Quant Title : SW846 8260
 QLast Update : Tue Jun 05 03:22:35 2018
 Response via : Initial Calibration

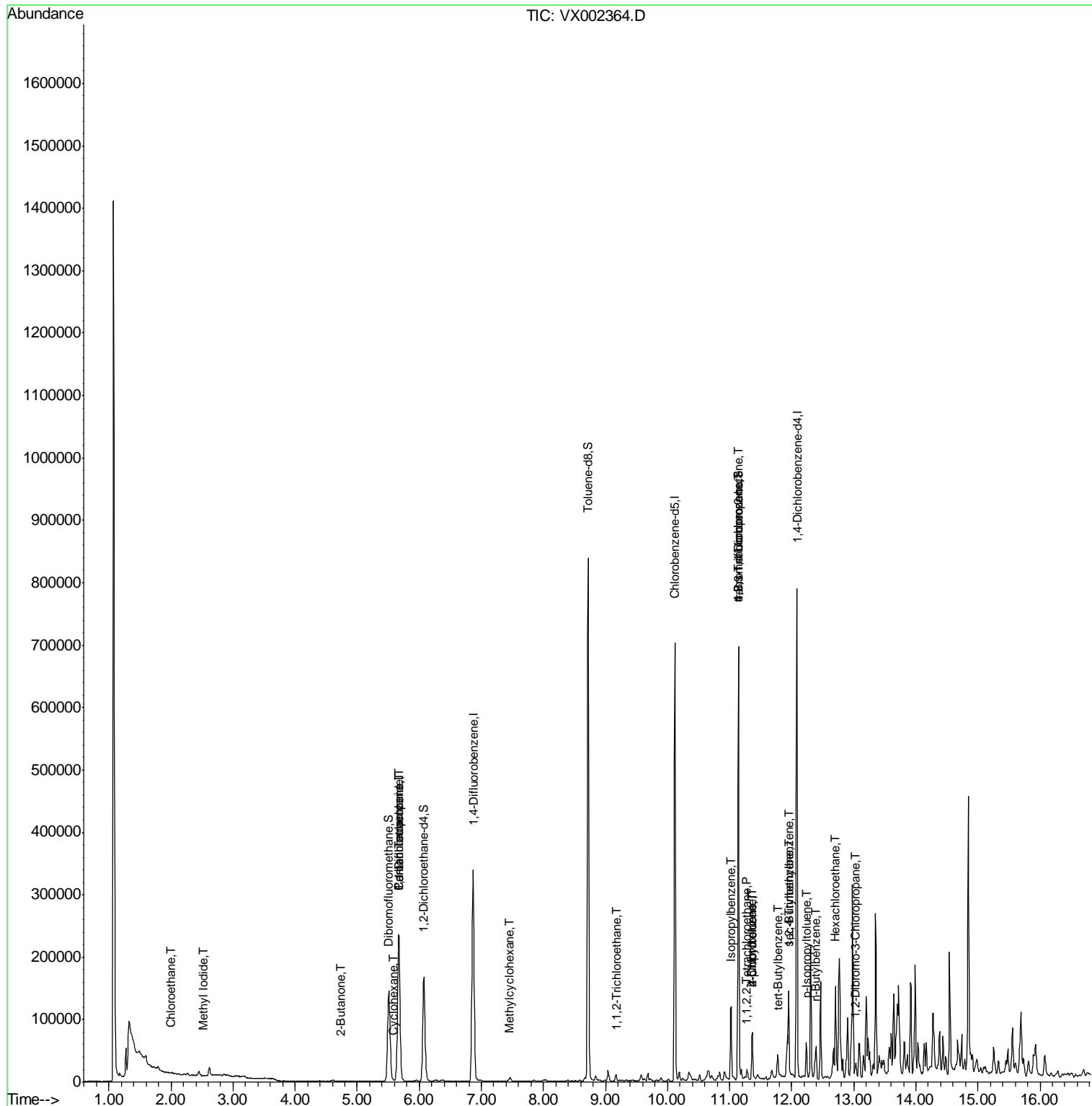
Internal Standards	R.T.	QIon	Response	Conc	Units	Dev(Min)
--------------------	------	------	----------	------	-------	----------

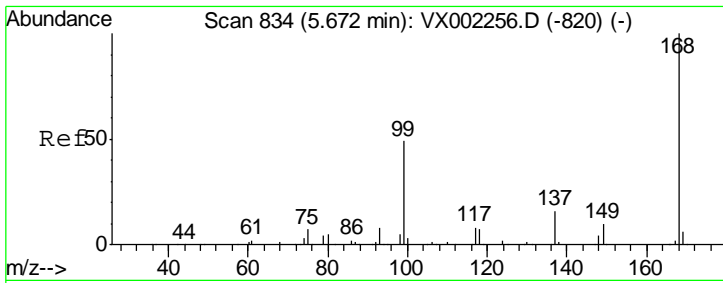
(#) = qualifier out of range (m) = manual integration (+) = signals summed

Data Path : Z:\VOASRV\HPCHEM1\MSVOA X\DATA\VX060618\
 Data File : VX002364.D
 Acq On : 06 Jun 2018 20:22
 Operator : JC/MD
 Sample : J3312-07
 Misc : 5.0mL/MSVOA X/WATER
 ALS Vial : 23 Sample Multiplier: 1

Instrument :
 MSVOA_X
 ClientSampled :

Quant Time: Jun 07 03:26:52 2018
 Quant Method : Z:\VOASRV\HPCHEM1\MSVOA_X\METHOD\82X060418W.M
 Quant Title : SW846 8260
 QLast Update : Tue Jun 05 03:22:35 2018
 Response via : Initial Calibration

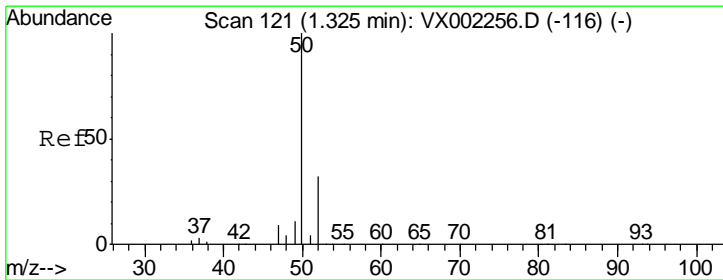
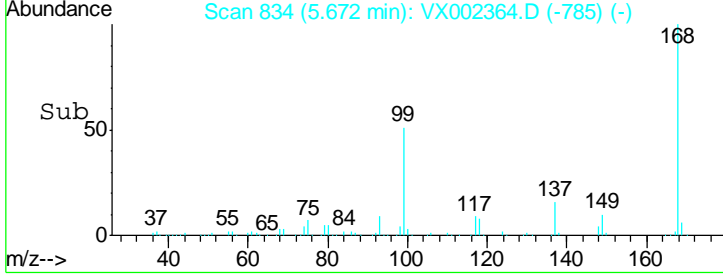
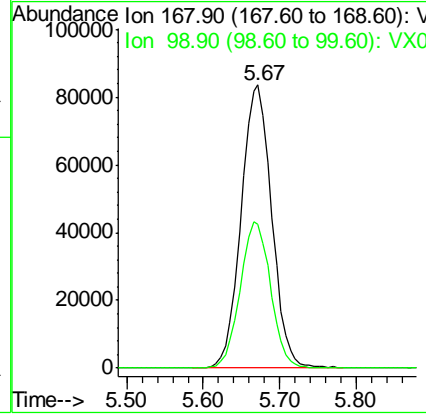
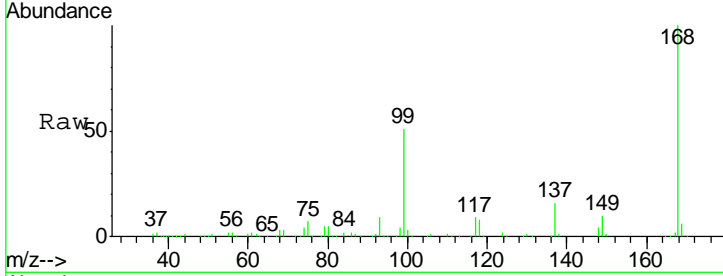




#1
 Pentafluorobenzene
 Concen: 50.00 ug/l
 RT: 5.67 min Scan# 834
 Delta R.T. -0.00 min
 Lab File: VX002364.D
 Acq: 06 Jun 2018 20:22

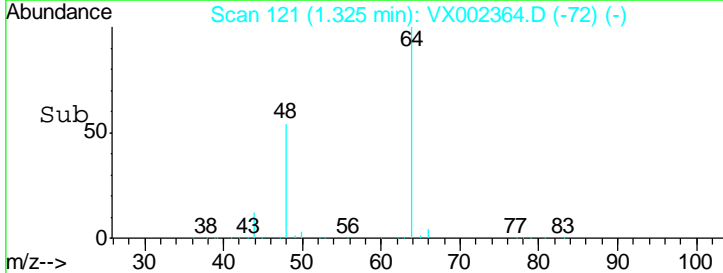
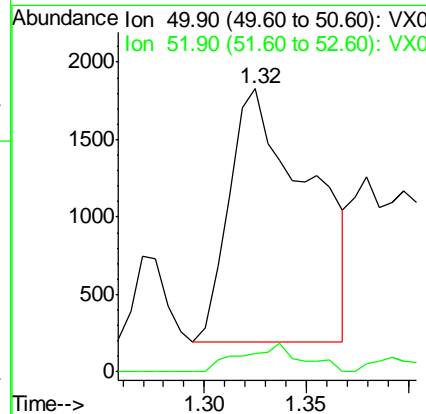
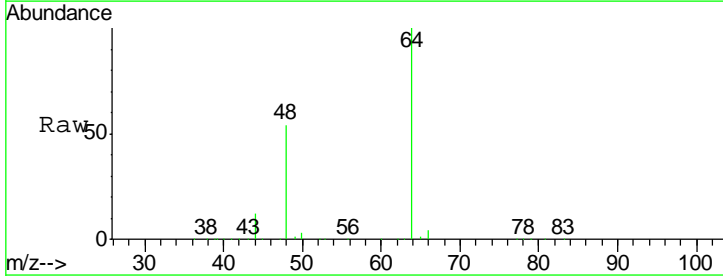
Instrument :
 MSVOA_X
 ClientSampled :

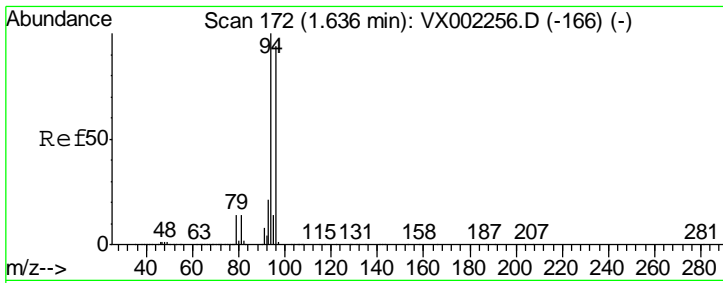
Tgt Ion	Resp	Lower	Upper
168	100		
99	50.7	39.3	58.9



#3
 Chloromethane
 Concen: Below Cal
 RT: 1.32 min Scan# 121
 Delta R.T. 0.00 min
 Lab File: VX002364.D
 Acq: 06 Jun 2018 20:22

Tgt Ion	Resp	Lower	Upper
50	100		
52	7.4	25.7	38.5#

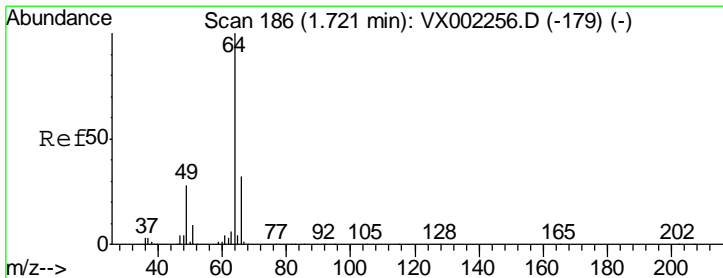
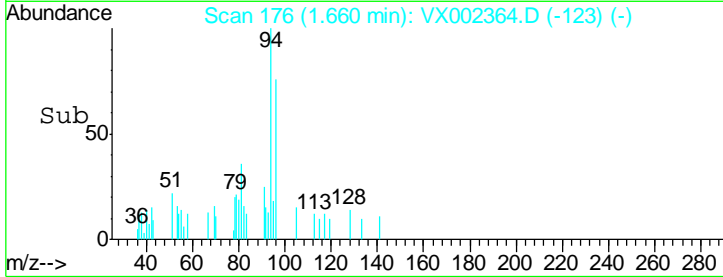
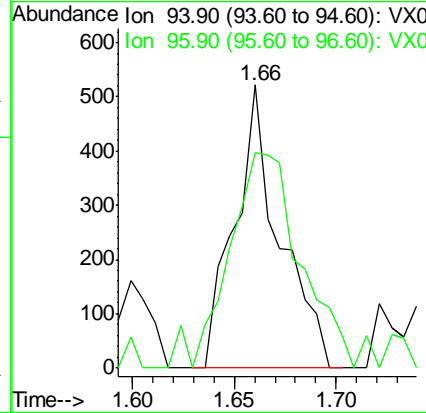
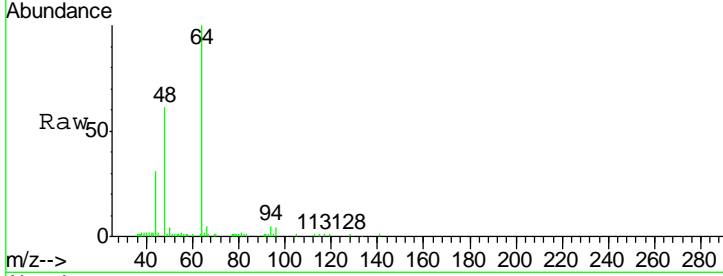




#5
 Bromomethane
 Concen: Below Cal
 RT: 1.66 min Scan# 176
 Delta R.T. 0.03 min
 Lab File: VX002364.D
 Acq: 06 Jun 2018 20:22

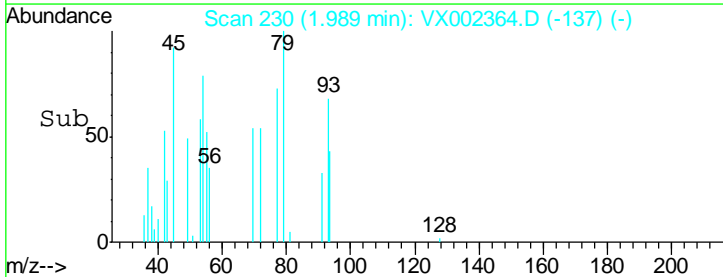
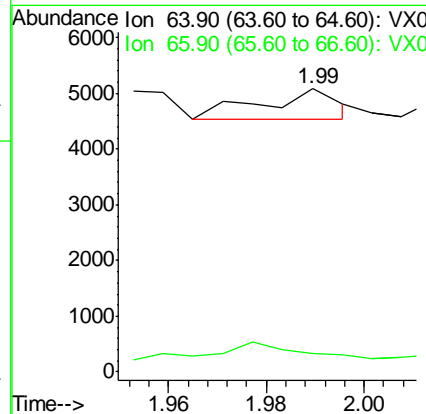
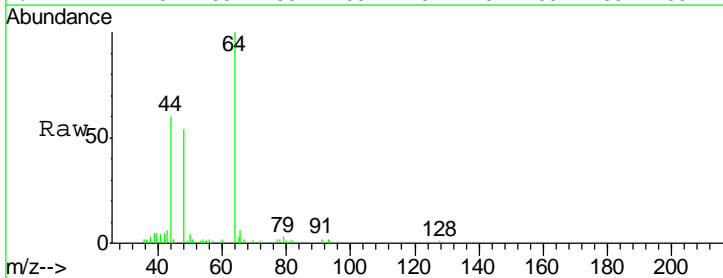
Instrument :
 MSVOA_X
 ClientSampled :

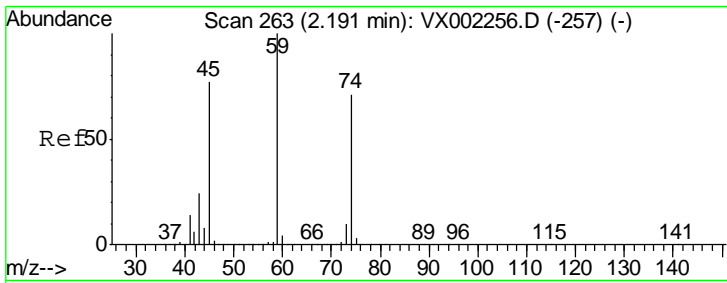
Tgt Ion: 94 Resp: 795
 Ion Ratio Lower Upper
 94 100
 96 75.9 74.9 112.3



#6
 Chloroethane
 Concen: 0.31 ug/l
 RT: 1.99 min Scan# 230
 Delta R.T. 0.27 min
 Lab File: VX002364.D
 Acq: 06 Jun 2018 20:22

Tgt Ion: 64 Resp: 603
 Ion Ratio Lower Upper
 64 100
 66 6.1 25.5 38.3#

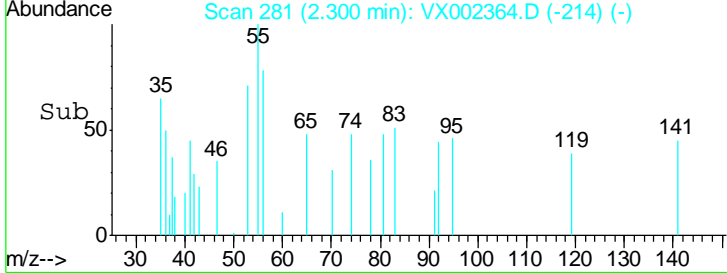
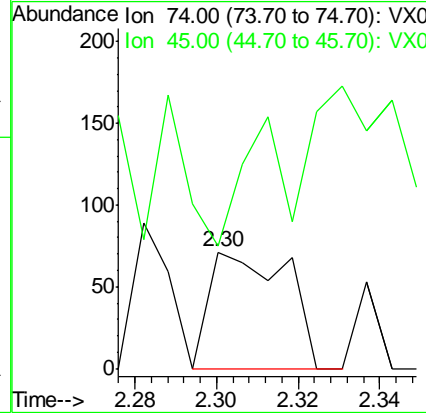
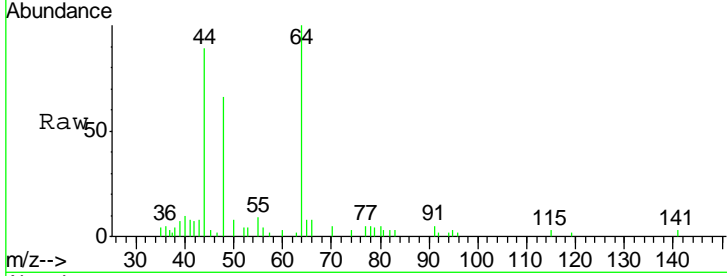




#8
 Diethyl Ether
 Concen: Below Cal
 RT: 2.30 min Scan# 281
 Delta R.T. 0.11 min
 Lab File: VX002364.D
 Acq: 06 Jun 2018 20:22

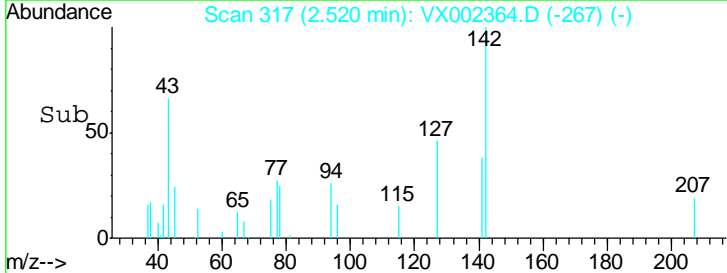
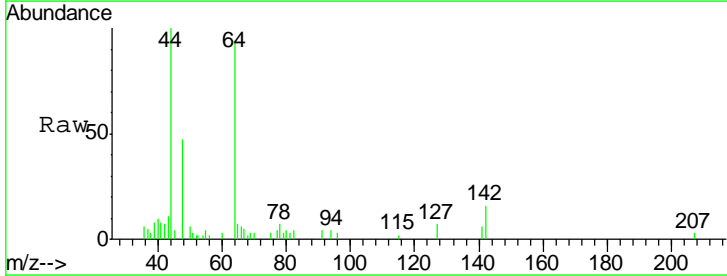
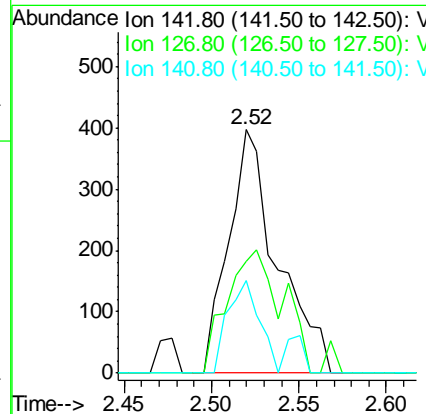
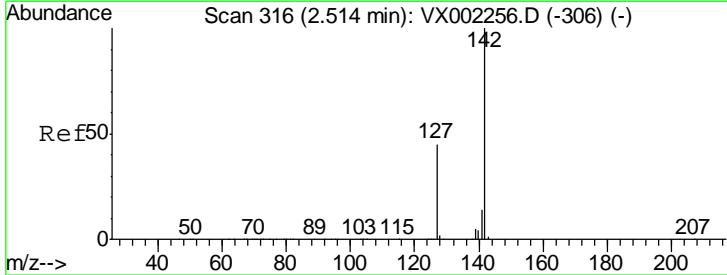
Instrument :
 MSVOA_X
 ClientSampled :

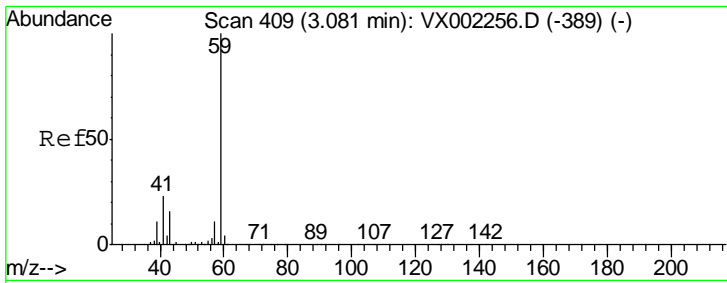
Tgt Ion	Resp	Lower	Upper
74	100		
45	105.3	53.1	159.4



#10
 Methyl Iodide
 Concen: 0.22 ug/l
 RT: 2.52 min Scan# 317
 Delta R.T. 0.01 min
 Lab File: VX002364.D
 Acq: 06 Jun 2018 20:22

Tgt Ion	Resp	Lower	Upper
142	100		
127	57.0	36.6	55.0#
141	24.6	11.3	16.9#

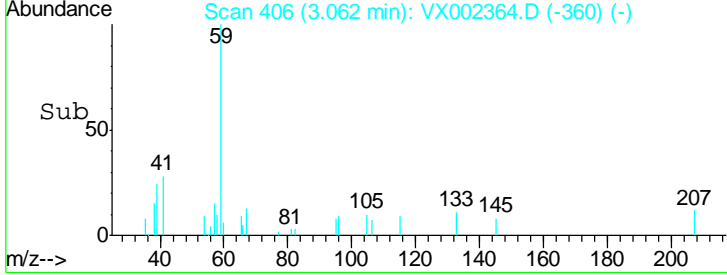
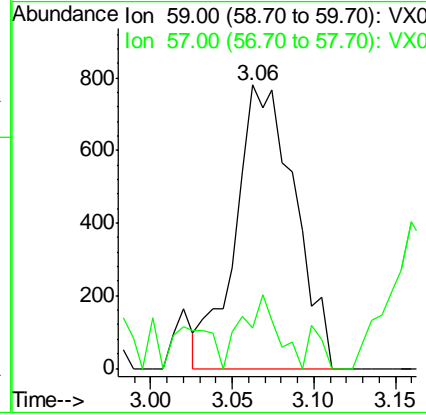
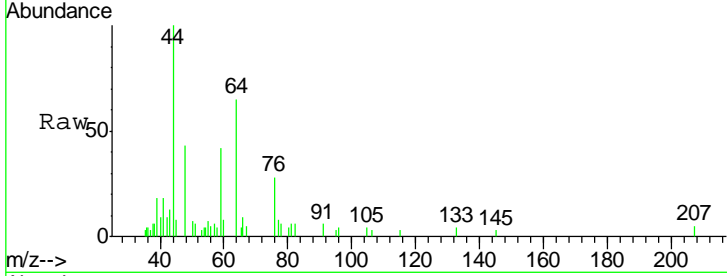




#11
 Tert butyl alcohol
 Concen: Below Cal
 RT: 3.06 min Scan# 406
 Delta R.T. -0.02 min
 Lab File: VX002364.D
 Acq: 06 Jun 2018 20:22

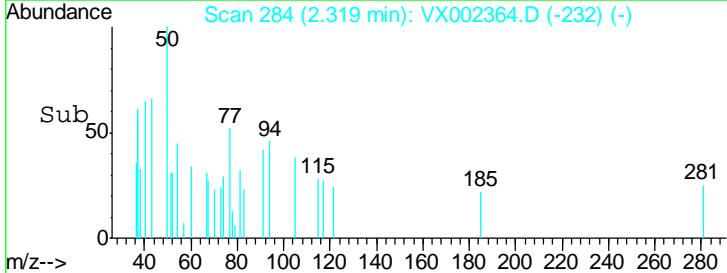
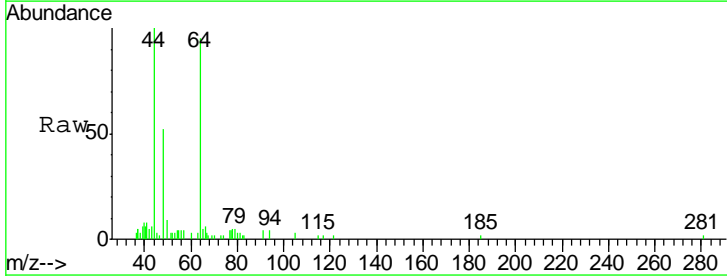
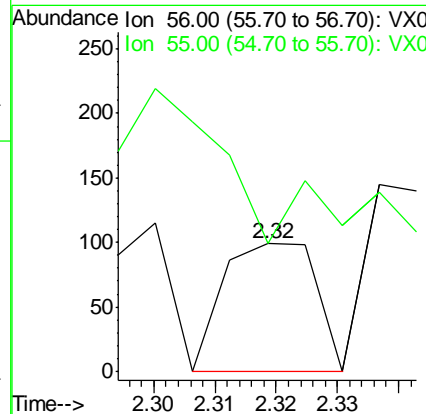
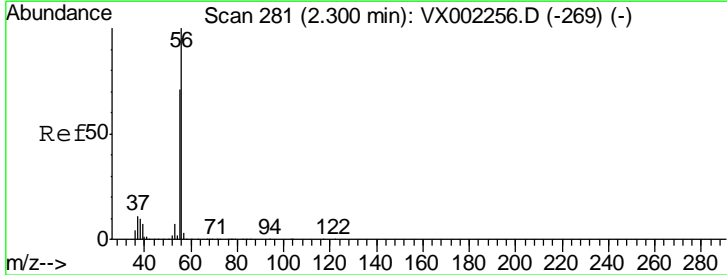
Instrument :
 MSVOA_X
 ClientSampled :

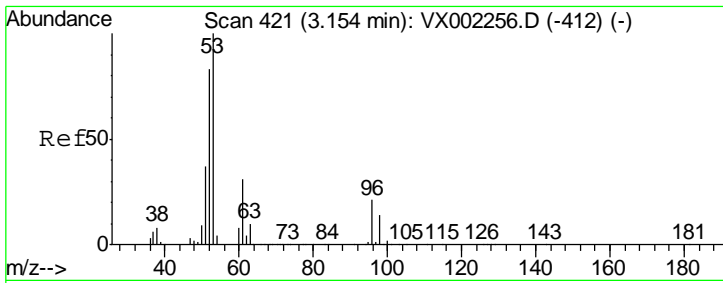
Tgt Ion: 59 Resp: 1973
 Ion Ratio Lower Upper
 59 100
 57 15.2 8.2 12.2#



#13
 Acrolein
 Concen: Below Cal
 RT: 2.32 min Scan# 284
 Delta R.T. 0.02 min
 Lab File: VX002364.D
 Acq: 06 Jun 2018 20:22

Tgt Ion: 56 Resp: 104
 Ion Ratio Lower Upper
 56 100
 55 0.0 57.0 85.4#

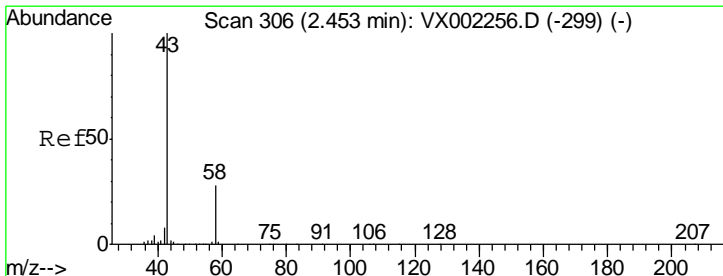
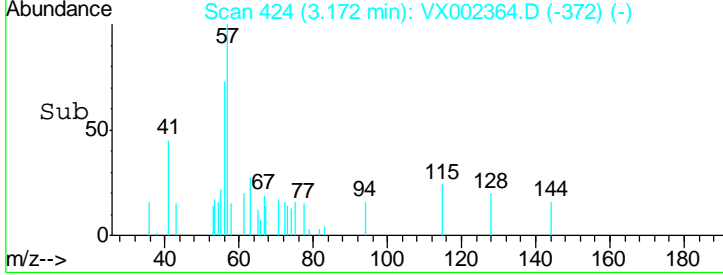
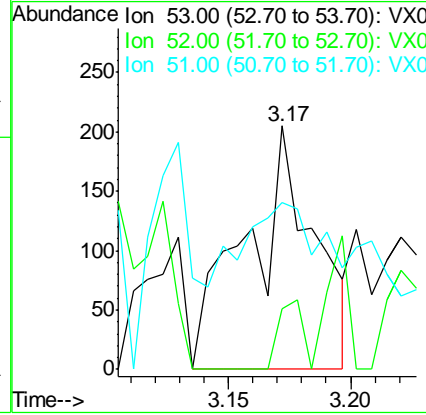
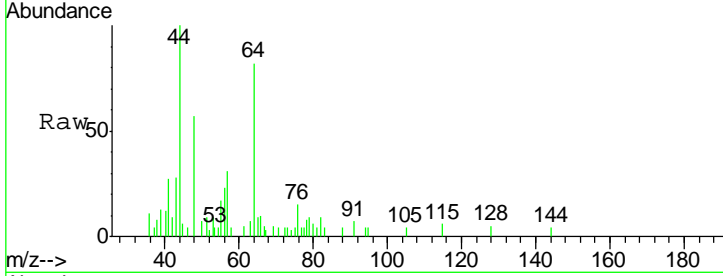




#15
 Acrylonitrile
 Concen: Below Cal
 RT: 3.17 min Scan# 424
 Delta R.T. 0.02 min
 Lab File: VX002364.D
 Acq: 06 Jun 2018 20:22

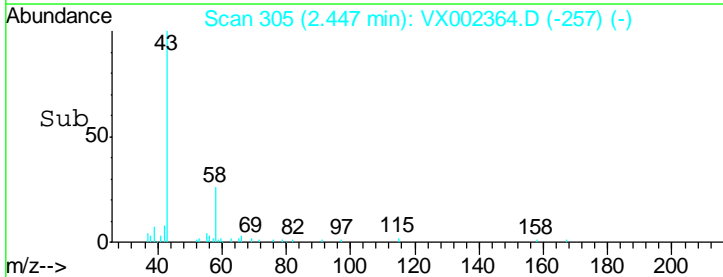
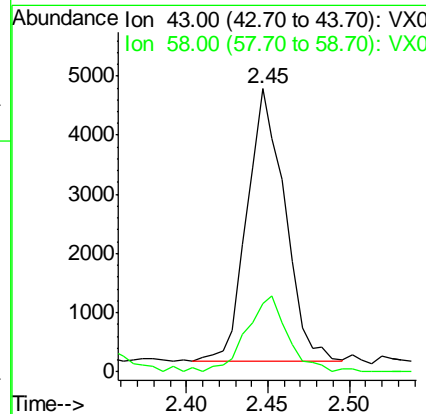
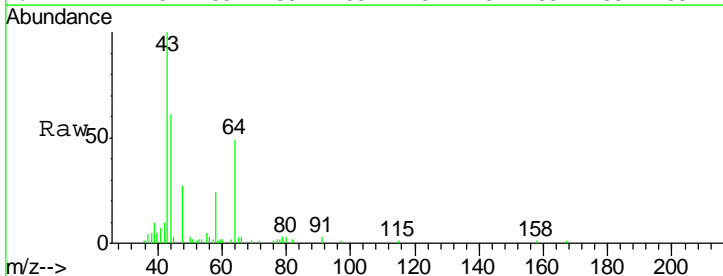
Instrument :
 MSVOA_X
 ClientSampled :

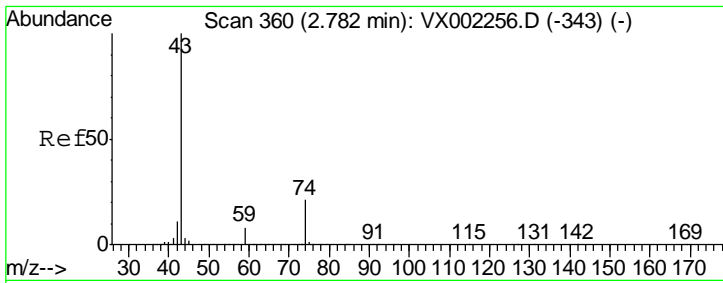
Tgt Ion	Resp	Lower	Upper
53	100		
52	10.1	66.7	100.1#
51	52.8	29.9	44.9#



#16
 Acetone
 Concen: Below Cal
 RT: 2.45 min Scan# 305
 Delta R.T. -0.01 min
 Lab File: VX002364.D
 Acq: 06 Jun 2018 20:22

Tgt Ion	Resp	Lower	Upper
43	100		
58	24.0	22.1	33.1

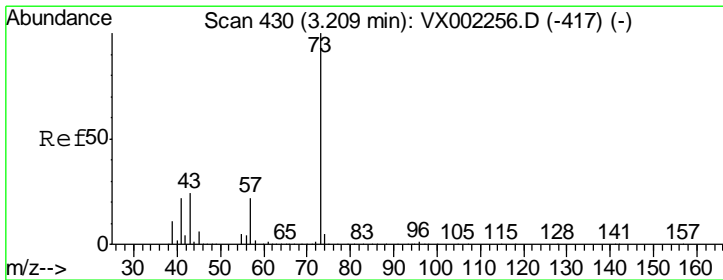
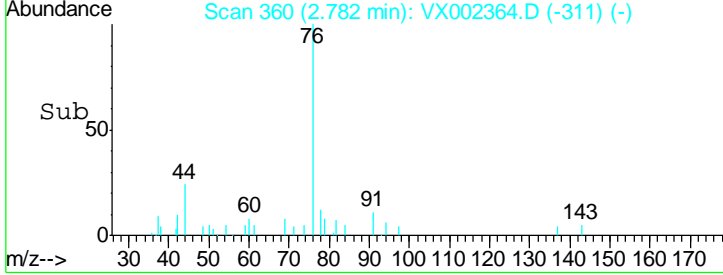
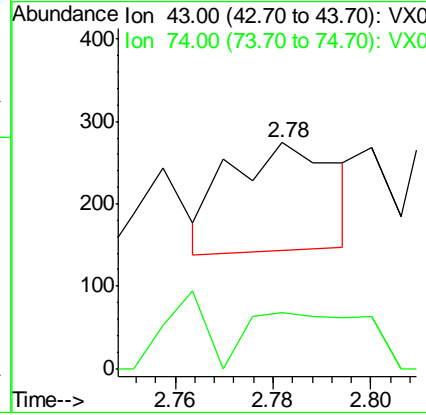
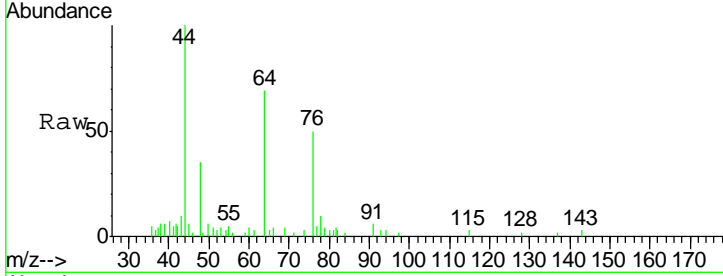




#18
 Methyl Acetate
 Concen: Below Cal
 RT: 2.78 min Scan# 360
 Delta R.T. -0.00 min
 Lab File: VX002364.D
 Acq: 06 Jun 2018 20:22

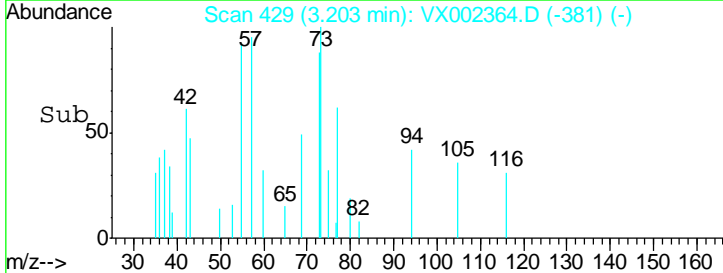
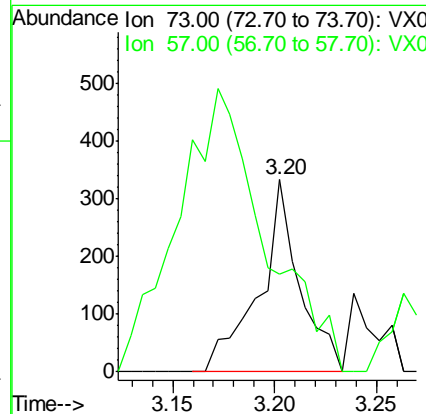
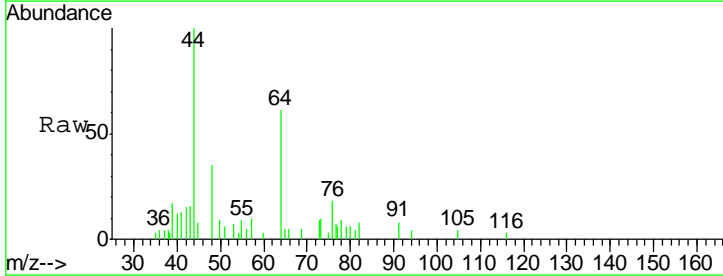
Instrument :
 MSVOA_X
 ClientSampled :

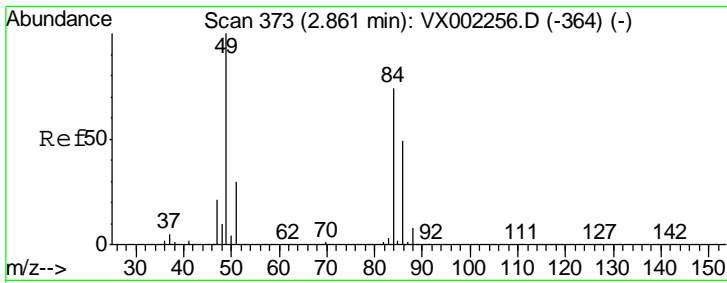
Tgt Ion	Resp	Lower	Upper
43	100		
74	58.8	16.7	25.1#



#19
 Methyl tert-butyl Ether
 Concen: Below Cal
 RT: 3.20 min Scan# 429
 Delta R.T. -0.01 min
 Lab File: VX002364.D
 Acq: 06 Jun 2018 20:22

Tgt Ion	Resp	Lower	Upper
73	100		
57	50.8	17.7	26.5#

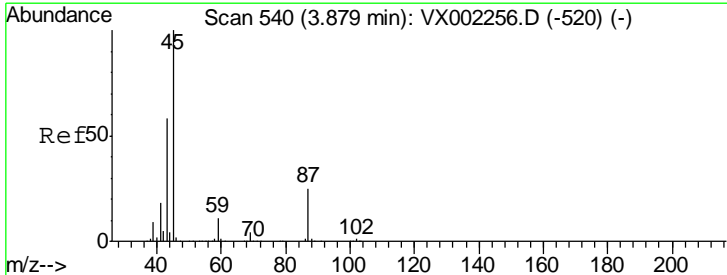
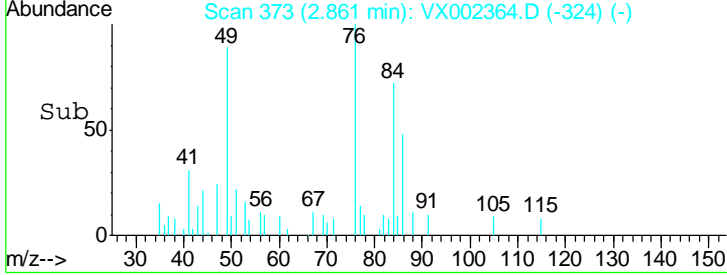
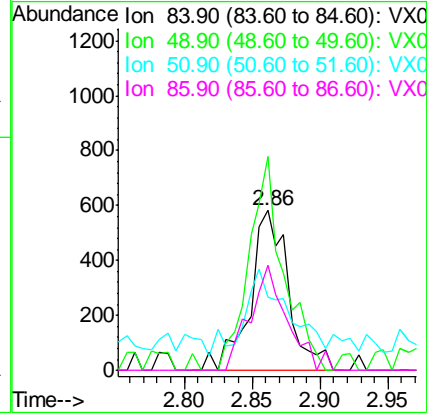
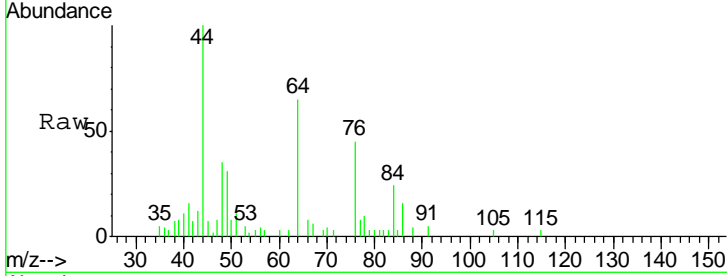




#20
 Methylene Chloride
 Concen: Below Cal
 RT: 2.86 min Scan# 373
 Delta R.T. 0.00 min
 Lab File: VX002364.D
 Acq: 06 Jun 2018 20:22

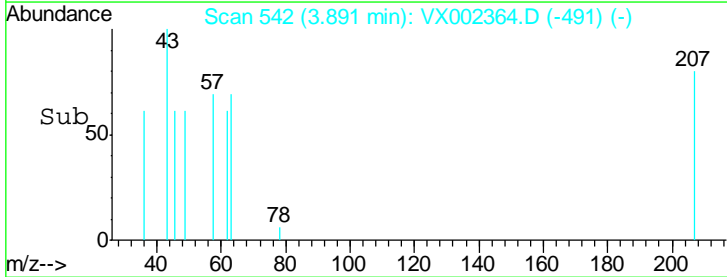
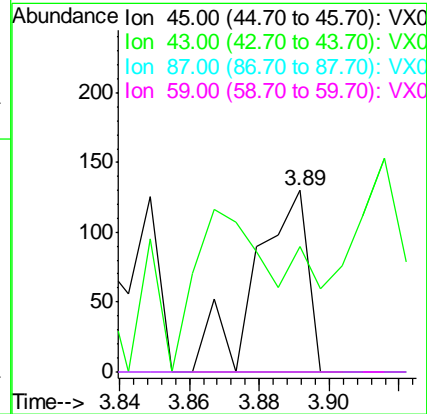
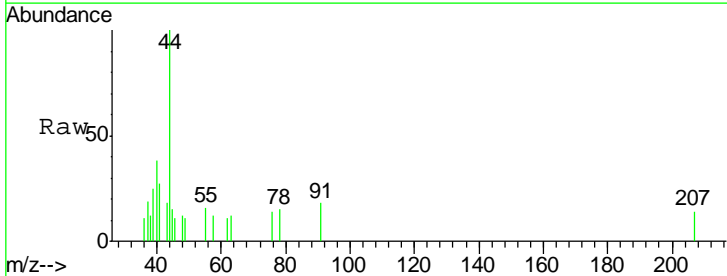
Instrument :
 MSVOA_X
 ClientSampled :

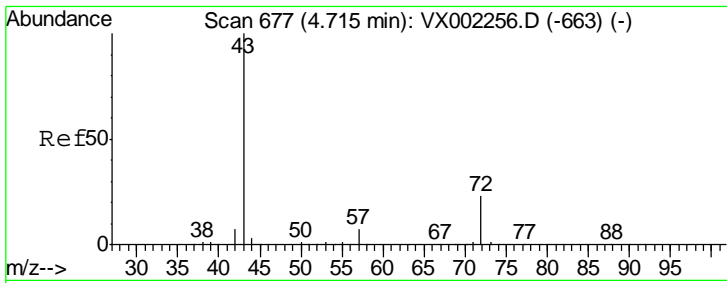
Tgt Ion	Resp	Lower	Upper
84	100		
49	123.9	107.8	161.6
51	27.7	32.8	49.2#
86	66.2	52.5	78.7



#22
 Diisopropyl ether
 Concen: Below Cal
 RT: 3.89 min Scan# 542
 Delta R.T. 0.01 min
 Lab File: VX002364.D
 Acq: 06 Jun 2018 20:22

Tgt Ion	Resp	Lower	Upper
45	100		
43	15.4	46.8	70.2#
87	0.0	20.2	30.4#
59	0.0	8.7	13.1#

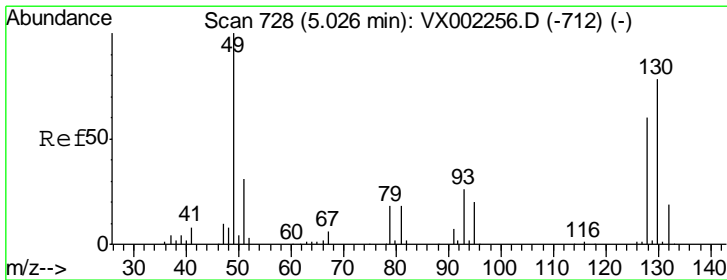
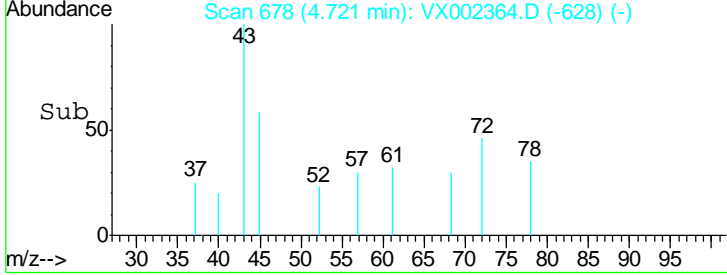
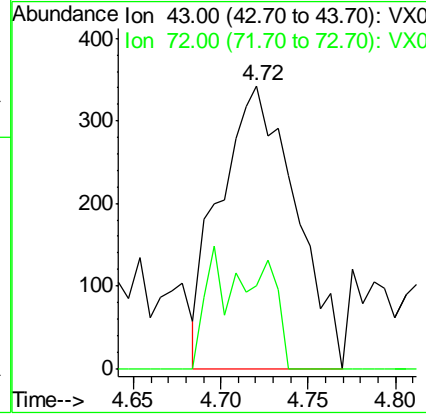
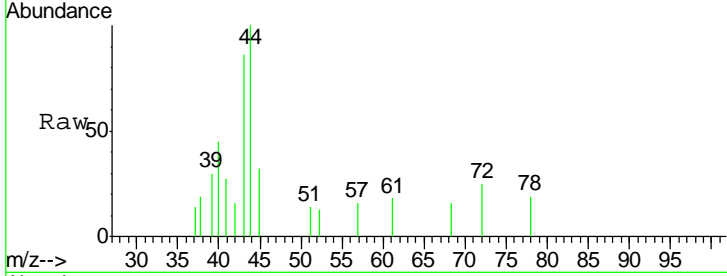




#25
 2-Butanone
 Concen: 0.45 ug/l
 RT: 4.72 min Scan# 678
 Delta R.T. 0.01 min
 Lab File: VX002364.D
 Acq: 06 Jun 2018 20:22

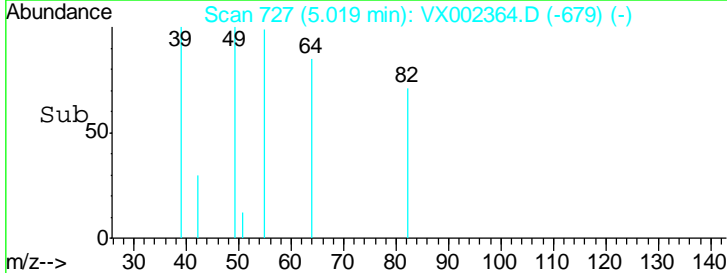
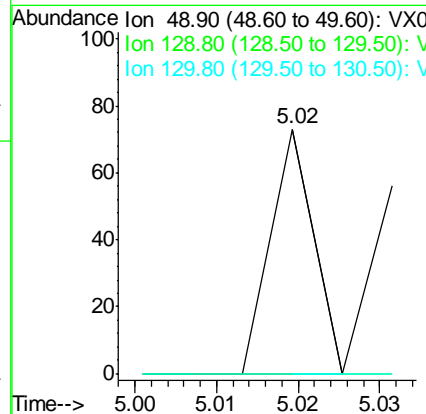
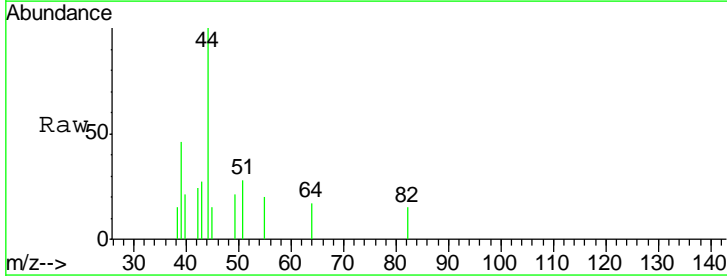
Instrument :
 MSVOA_X
 ClientSampled :

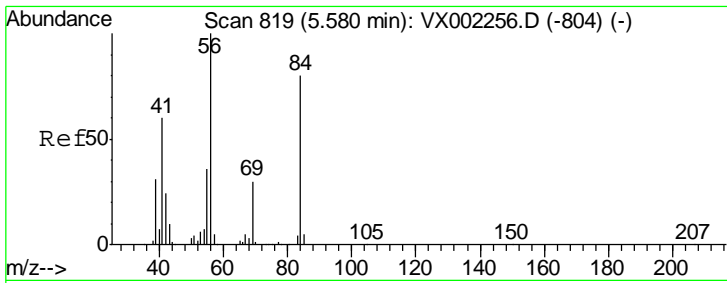
Tgt Ion	Resp	Lower	Upper
43	1030		
72	29.2	18.5	27.7#



#28
 Bromochloromethane
 Concen: Below Cal
 RT: 5.02 min Scan# 727
 Delta R.T. -0.01 min
 Lab File: VX002364.D
 Acq: 06 Jun 2018 20:22

Tgt Ion	Resp	Lower	Upper
49	27		
129	0.0	0.0	4.2
130	0.0	61.2	91.8#

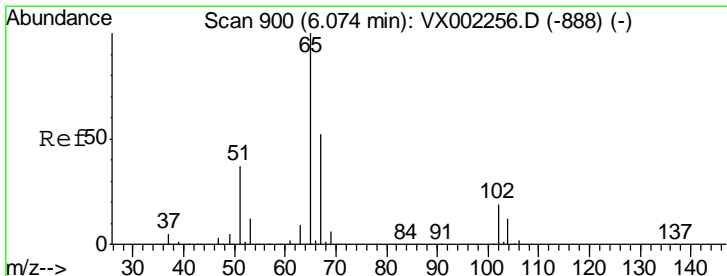
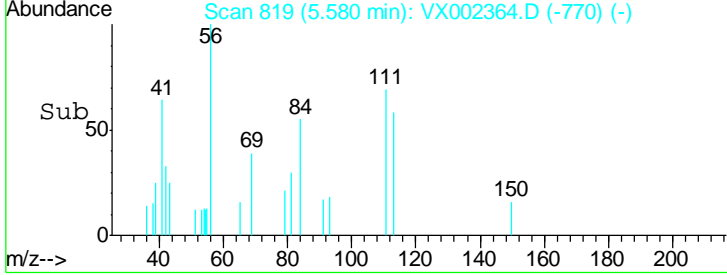
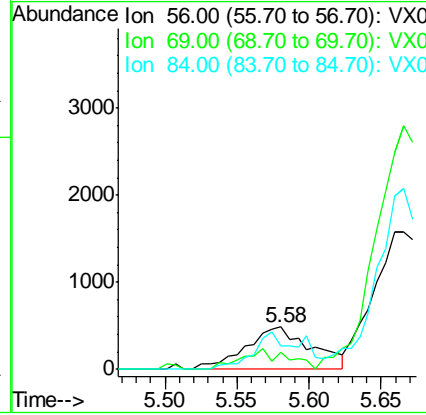
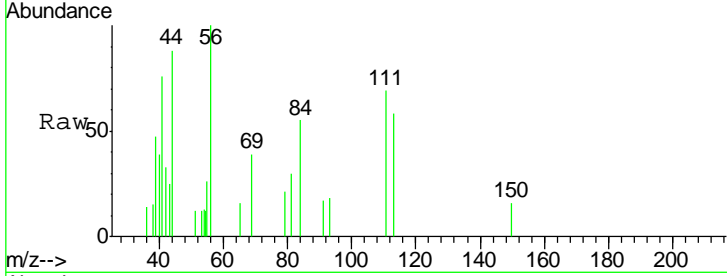




#31
 Cyclohexane
 Concen: 0.37 ug/l
 RT: 5.58 min Scan# 819
 Delta R.T. -0.00 min
 Lab File: VX002364.D
 Acq: 06 Jun 2018 20:22

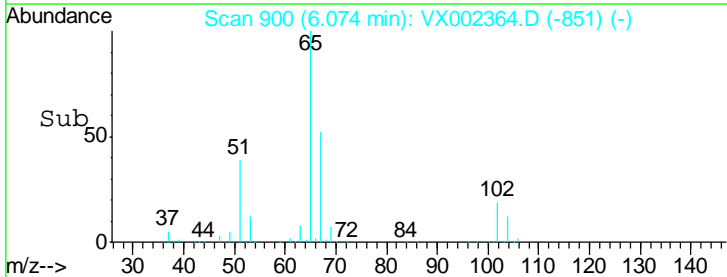
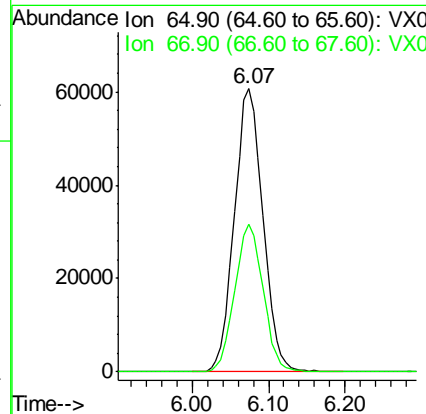
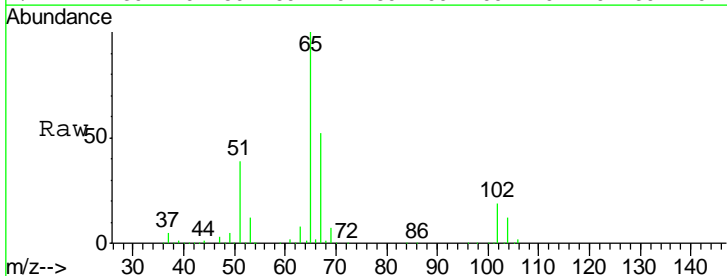
Instrument :
 MSVOA_X
 ClientSampled :

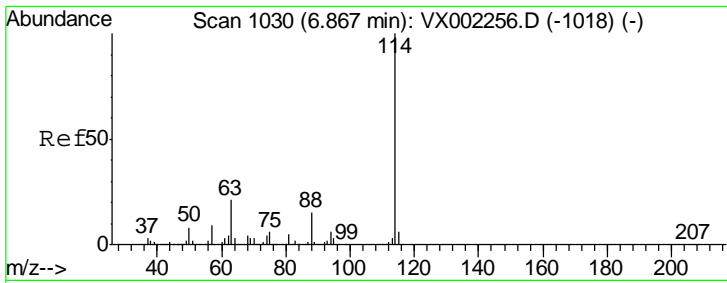
Tgt Ion	Resp	Lower	Upper
56	1545		
69	39.0	23.7	35.5#
84	54.6	64.1	96.1#



#33
 1,2-Dichloroethane-d4
 Concen: 47.36 ug/l
 RT: 6.07 min Scan# 900
 Delta R.T. -0.00 min
 Lab File: VX002364.D
 Acq: 06 Jun 2018 20:22

Tgt Ion	Resp	Lower	Upper
65	157389		
67	51.7	0.0	102.6

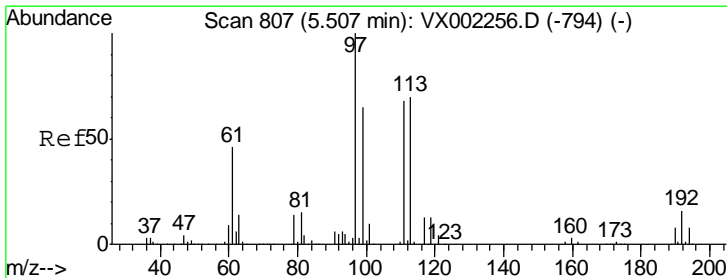
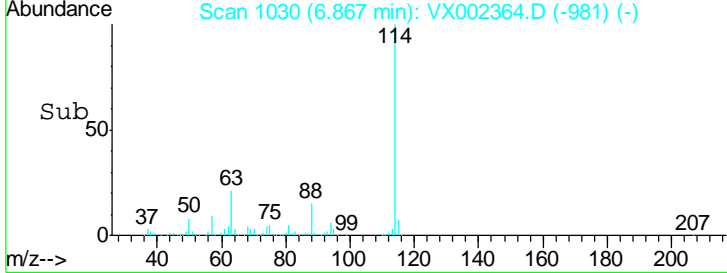
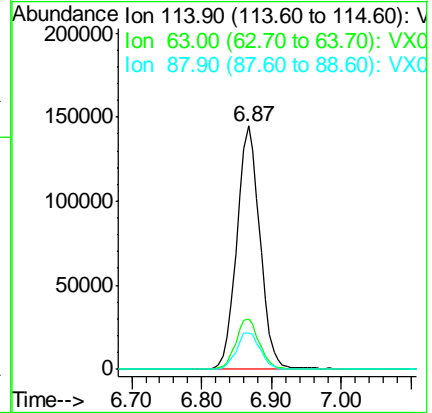
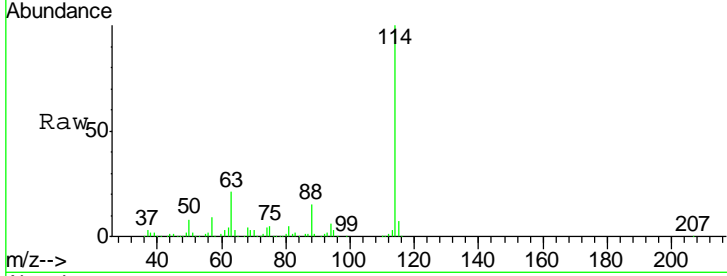




#34
 1,4-Difluorobenzene
 Concen: 50.00 ug/l
 RT: 6.87 min Scan# 1030
 Delta R.T. -0.00 min
 Lab File: VX002364.D
 Acq: 06 Jun 2018 20:22

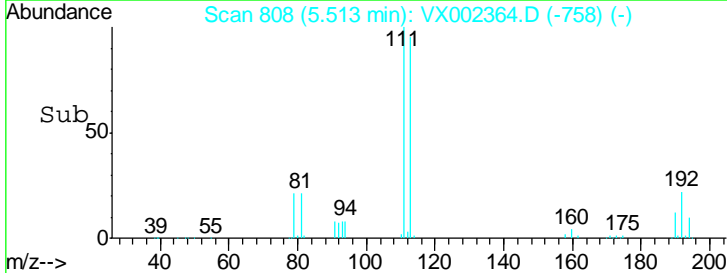
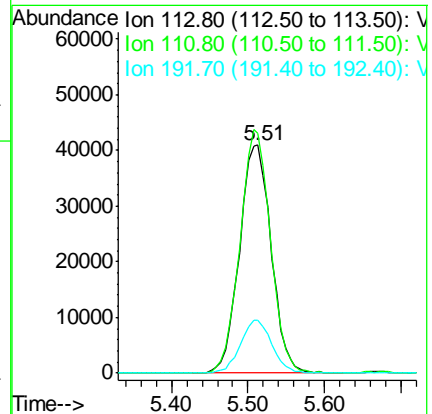
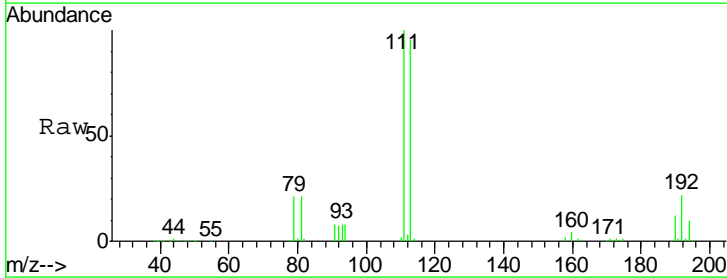
Instrument :
 MSVOA_X
 ClientSampled :

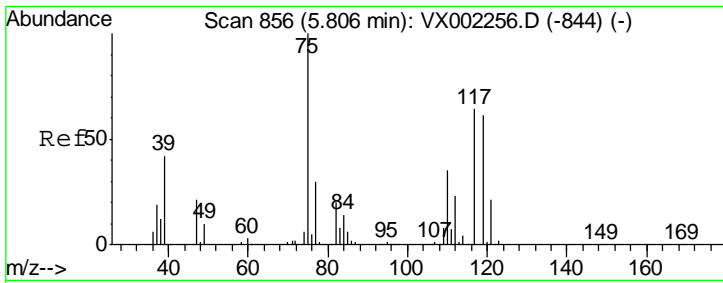
Tgt Ion	Resp	Lower	Upper
114	332698		
63	20.6	0.0	41.4
88	14.9	0.0	30.0



#35
 Dibromofluoromethane
 Concen: 44.99 ug/l
 RT: 5.51 min Scan# 808
 Delta R.T. 0.01 min
 Lab File: VX002364.D
 Acq: 06 Jun 2018 20:22

Tgt Ion	Resp	Lower	Upper
113	117708		
111	103.1	81.4	122.0
192	22.9	19.1	28.7

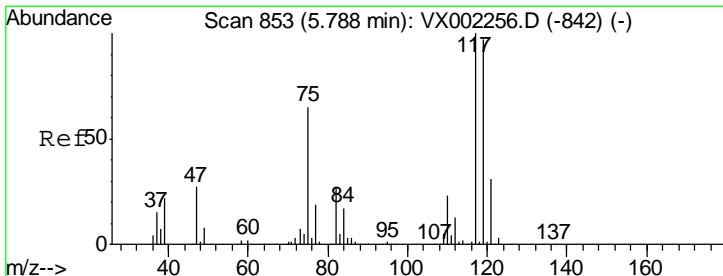
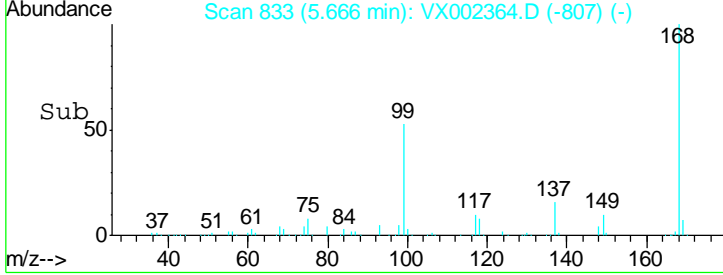
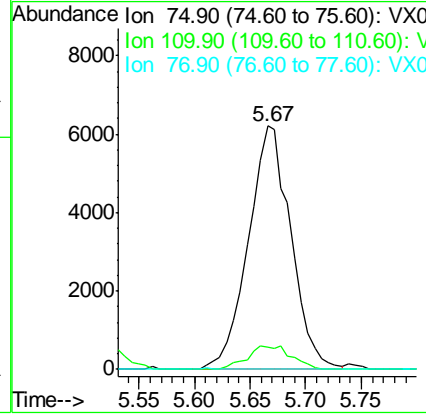
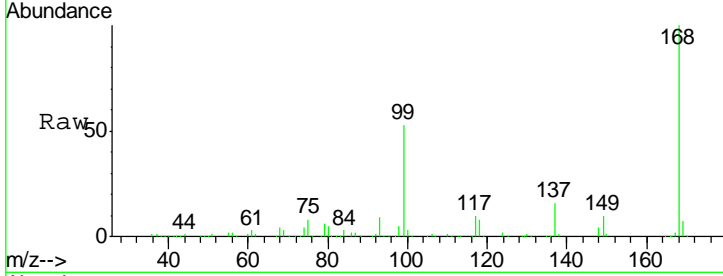




#36
 1,1-Dichloropropene
 Concen: 4.71 ug/l
 RT: 5.67 min Scan# 833
 Delta R.T. -0.14 min
 Lab File: VX002364.D
 Acq: 06 Jun 2018 20:22

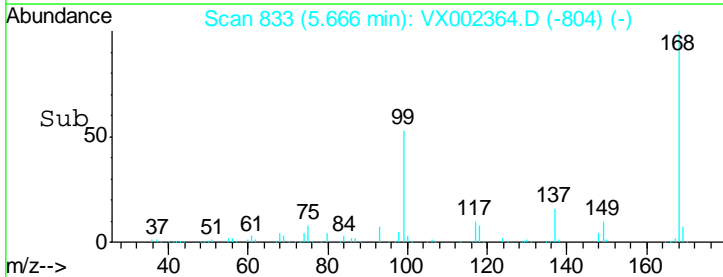
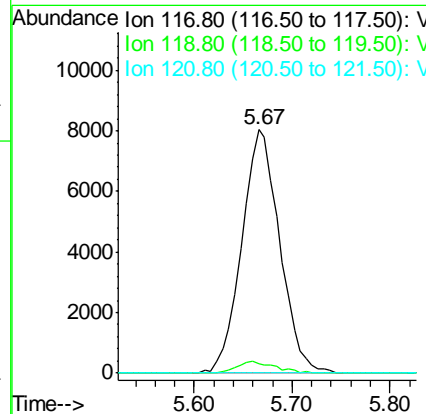
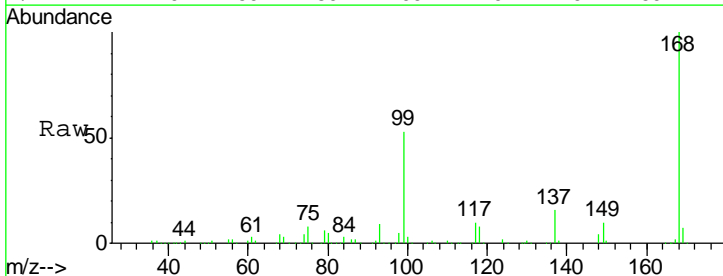
Instrument :
 MSVOA_X
 ClientSampled :

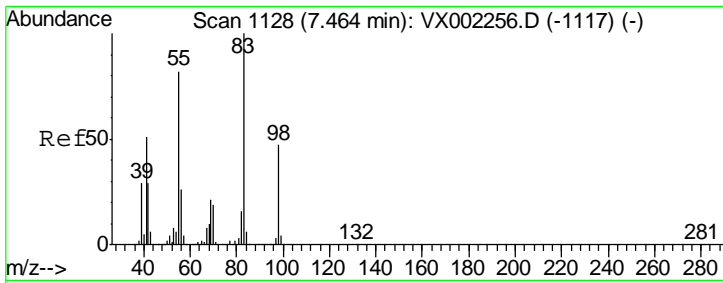
Tgt Ion	Resp	Lower	Upper
75	16478		
110	10.0	18.1	54.4#
77	0.0	24.3	36.5#



#38
 Carbon Tetrachloride
 Concen: 5.90 ug/l
 RT: 5.67 min Scan# 833
 Delta R.T. -0.12 min
 Lab File: VX002364.D
 Acq: 06 Jun 2018 20:22

Tgt Ion	Resp	Lower	Upper
117	21592		
119	3.8	77.4	116.0#
121	0.0	24.4	36.6#

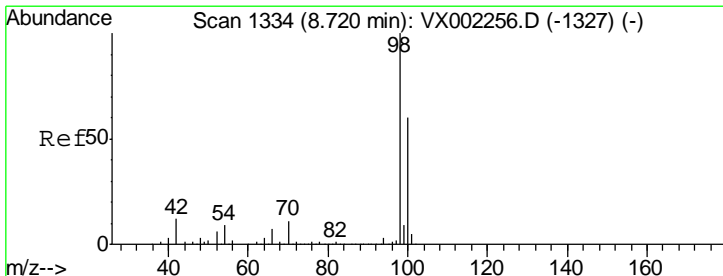
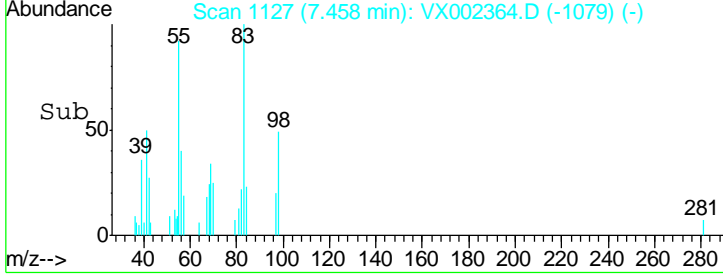
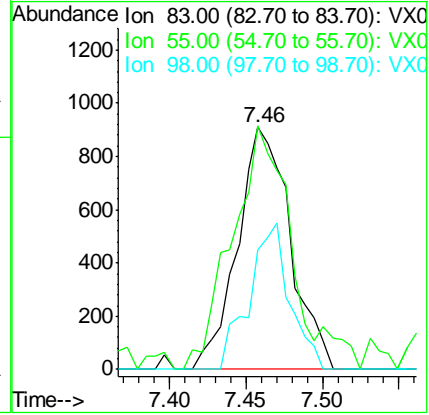
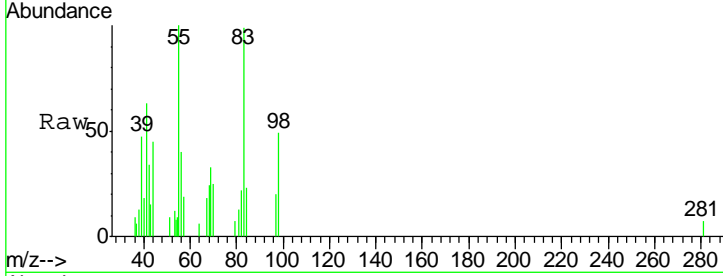




#39
 Methylcyclohexane
 Concen: 0.77 ug/l
 RT: 7.46 min Scan# 1127
 Delta R.T. -0.01 min
 Lab File: VX002364.D
 Acq: 06 Jun 2018 20:22

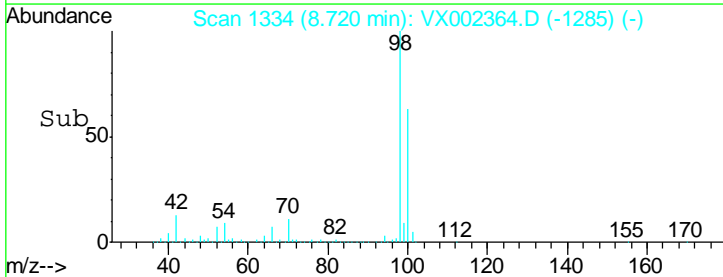
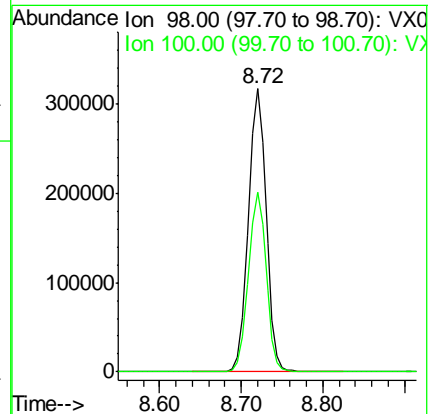
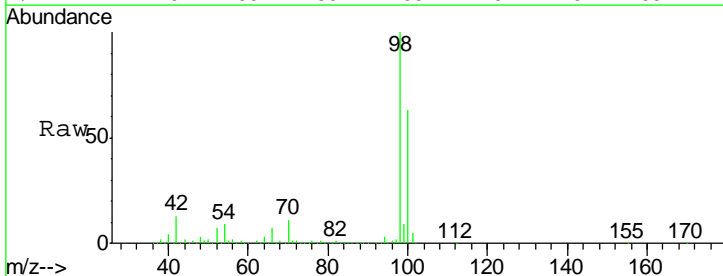
Instrument :
 MSVOA_X
 ClientSampled :

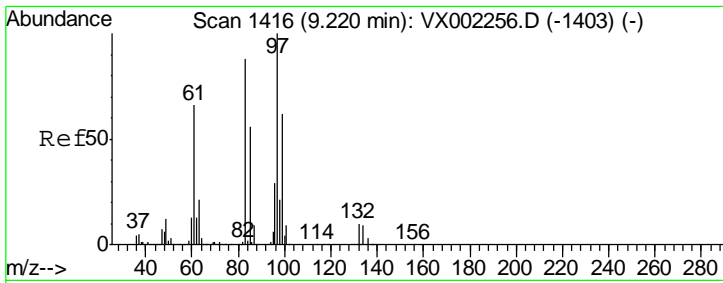
Tgt Ion	Resp	Lower	Upper
83	2183		
83	100		
55	92.4	65.4	98.0
98	49.3	37.4	56.0



#50
 Toluene-d8
 Concen: 47.73 ug/l
 RT: 8.72 min Scan# 1334
 Delta R.T. -0.00 min
 Lab File: VX002364.D
 Acq: 06 Jun 2018 20:22

Tgt Ion	Resp	Lower	Upper
98	478630		
98	100		
100	63.4	50.9	76.3

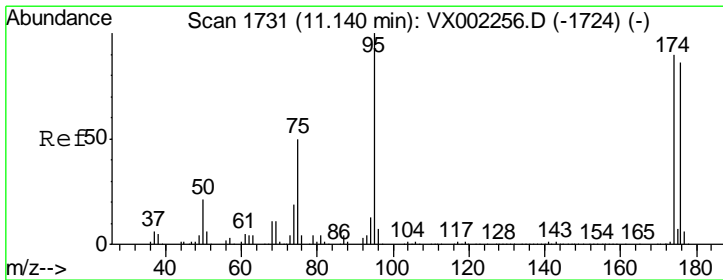
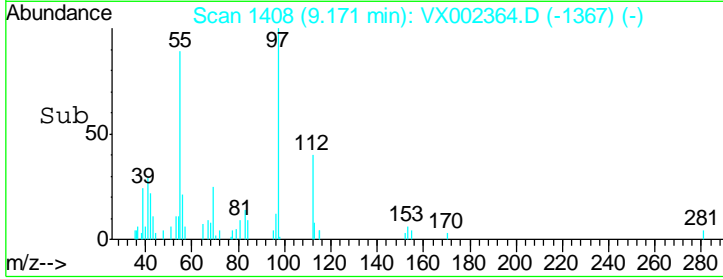
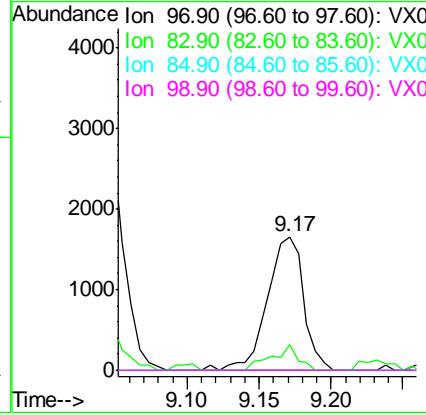
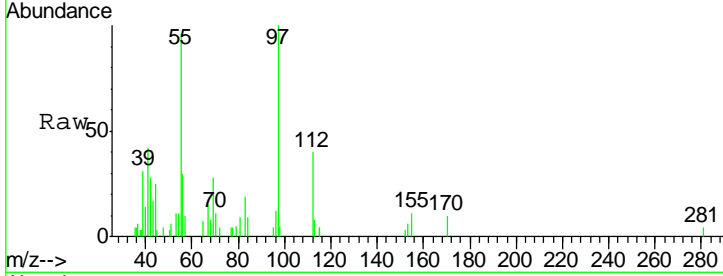




#55
 1,1,2-Trichloroethane
 Concen: 1.03 ug/l
 RT: 9.17 min Scan# 1408
 Delta R.T. -0.05 min
 Lab File: VX002364.D
 Acq: 06 Jun 2018 20:22

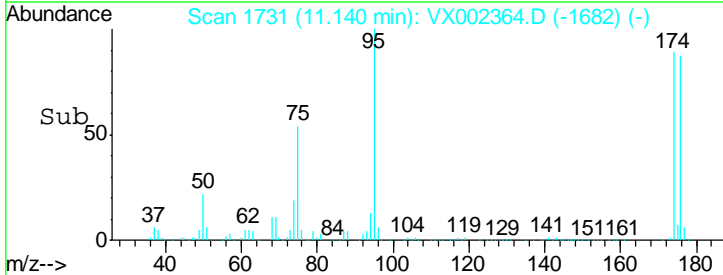
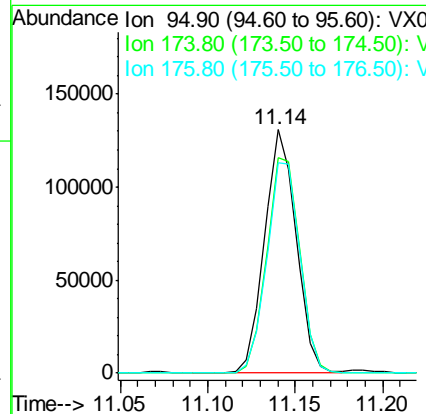
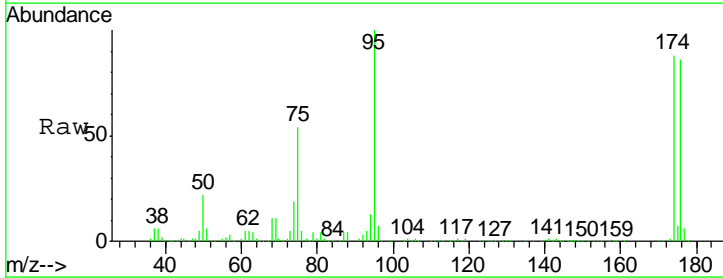
Instrument :
 MSVOA_X
 ClientSampled :

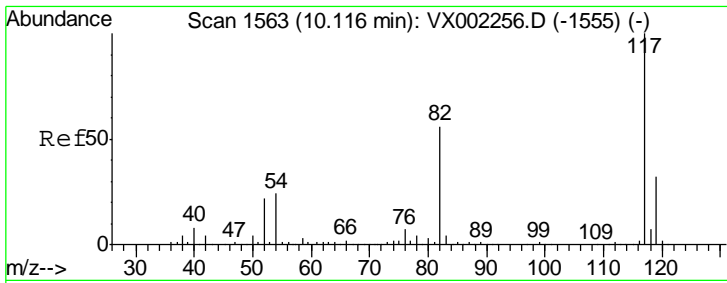
Tgt Ion	Resp	Lower	Upper
97	100		
83	19.4	70.2	105.2#
85	0.0	44.9	67.3#
99	0.0	49.8	74.8#



#62
 4-Bromofluorobenzene
 Concen: 42.55 ug/l
 RT: 11.14 min Scan# 1731
 Delta R.T. -0.00 min
 Lab File: VX002364.D
 Acq: 06 Jun 2018 20:22

Tgt Ion	Resp	Lower	Upper
95	100		
174	93.0	0.0	187.4
176	91.1	0.0	181.0

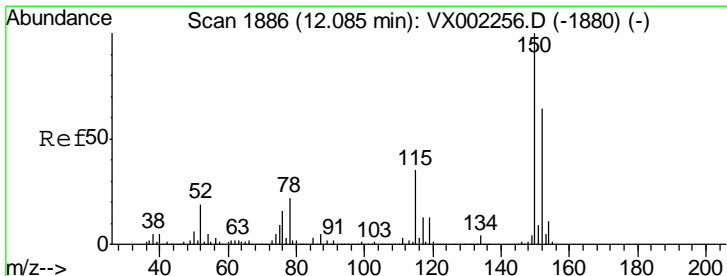
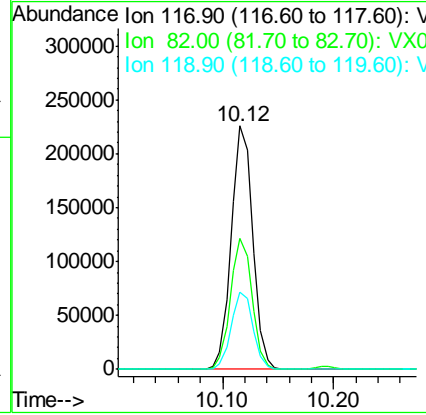
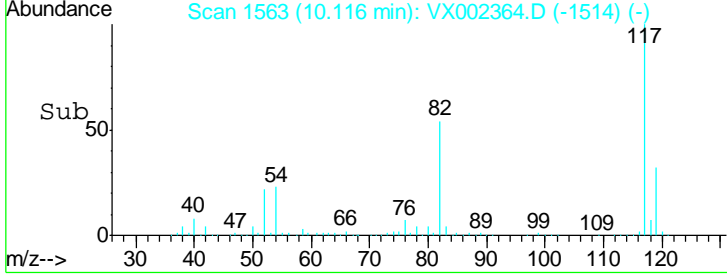
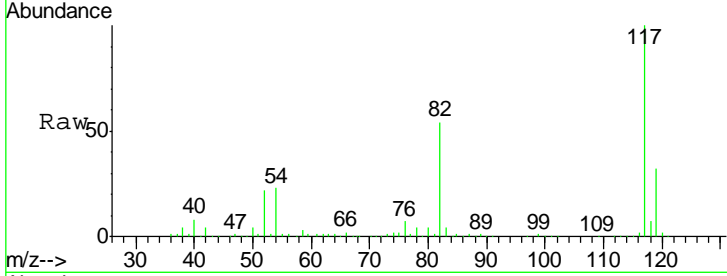




#63
 Chlorobenzene-d5
 Concen: 50.00 ug/l
 RT: 10.12 min Scan# 1563
 Delta R.T. -0.00 min
 Lab File: VX002364.D
 Acq: 06 Jun 2018 20:22

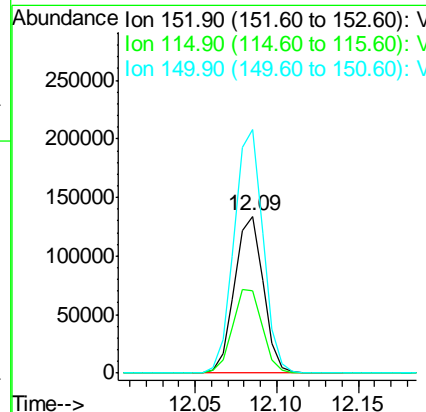
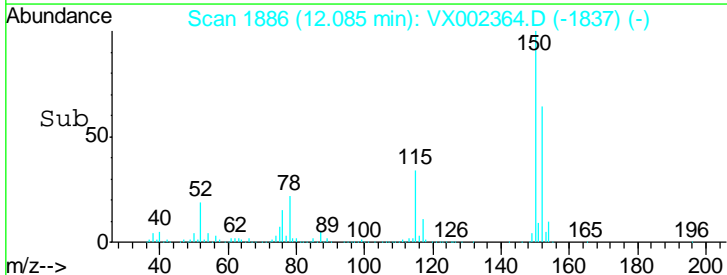
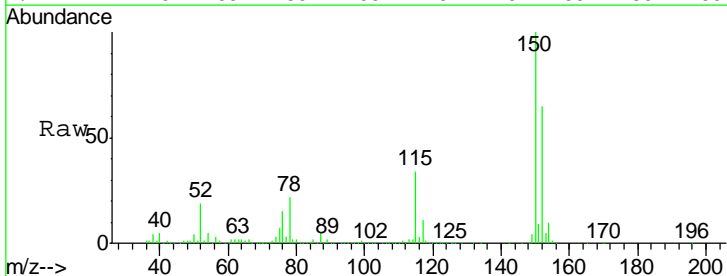
Instrument :
 MSVOA_X
 ClientSampled :

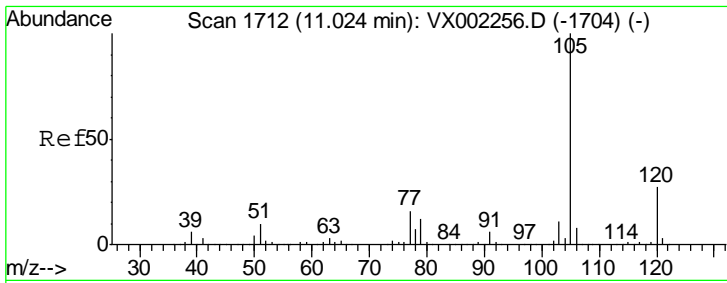
Tgt Ion	Resp	Lower	Upper
117	100		
82	54.0	45.0	67.4
119	31.8	25.8	38.6



#72
 1,4-Dichlorobenzene-d4
 Concen: 50.00 ug/l
 RT: 12.09 min Scan# 1886
 Delta R.T. -0.00 min
 Lab File: VX002364.D
 Acq: 06 Jun 2018 20:22

Tgt Ion	Resp	Lower	Upper
152	100		
115	55.1	40.1	120.2
150	155.9	0.0	347.2

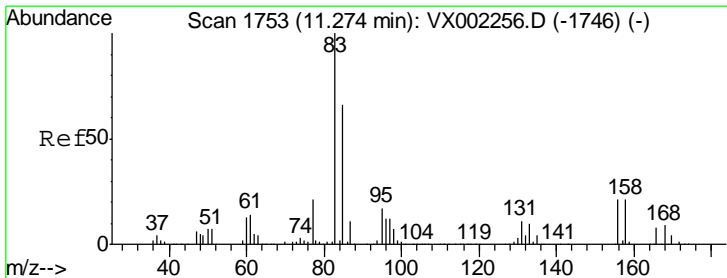
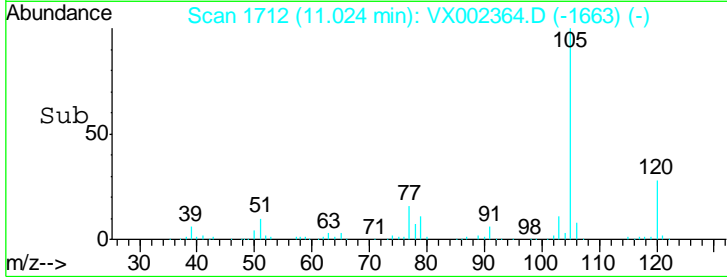
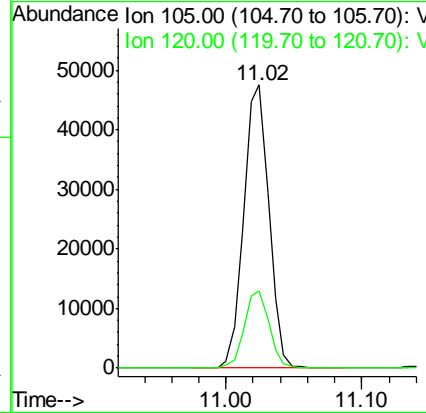
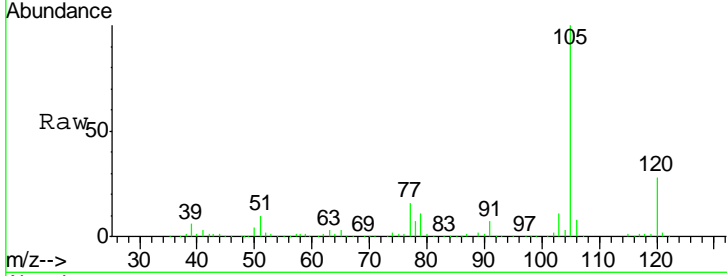




#73
 Isopropylbenzene
 Concen: 5.36 ug/l
 RT: 11.02 min Scan# 1712
 Delta R.T. -0.00 min
 Lab File: VX002364.D
 Acq: 06 Jun 2018 20:22

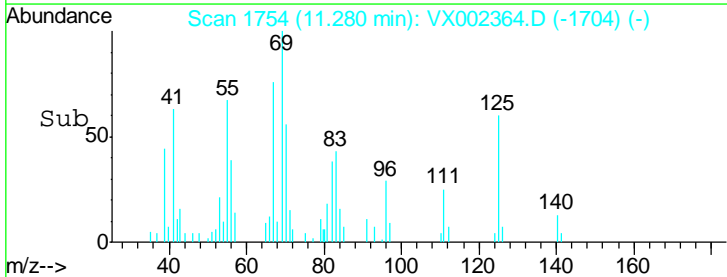
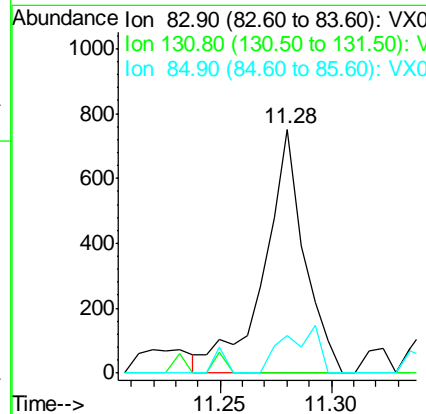
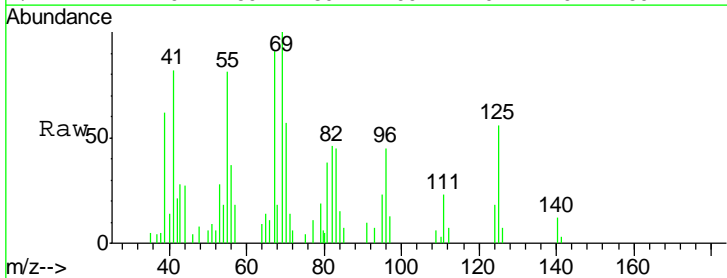
Instrument : MSVOA_X
 ClientSampled :

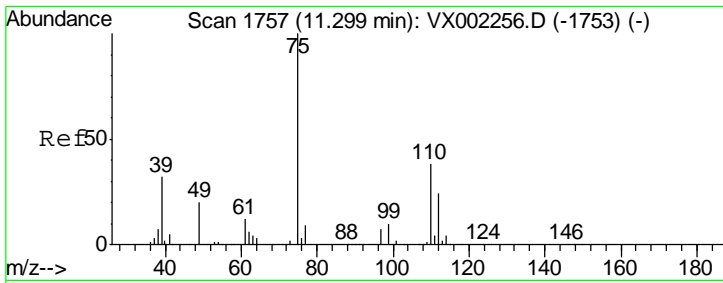
Tgt Ion	Resp	Lower	Upper
105	100		
120	26.8	13.5	40.4



#75
 1,1,2,2-Tetrachloroethane
 Concen: 0.26 ug/l
 RT: 11.28 min Scan# 1754
 Delta R.T. 0.01 min
 Lab File: VX002364.D
 Acq: 06 Jun 2018 20:22

Tgt Ion	Resp	Lower	Upper
83	100		
131	0.0	5.6	16.8#
85	16.4	32.4	97.2#

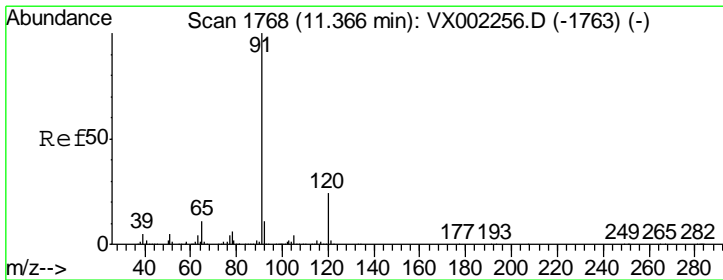
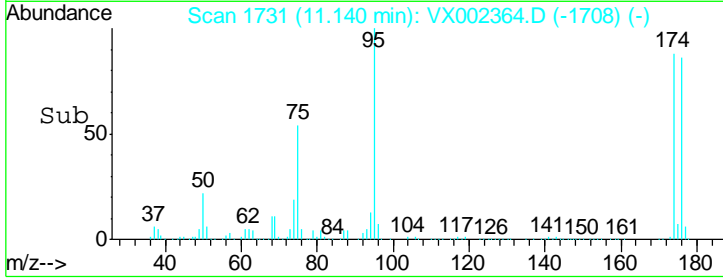
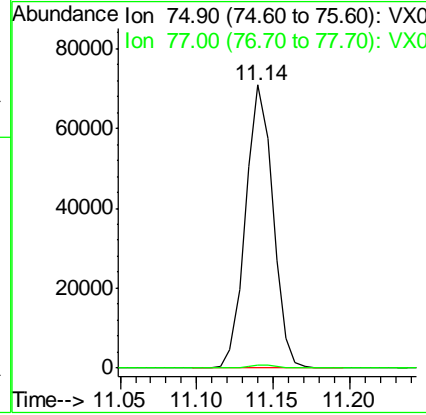
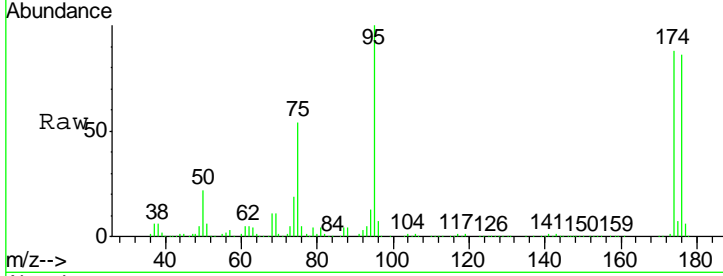




#76
 1,2,3-Trichloropropane
 Concen: 24.38 ug/l
 RT: 11.14 min Scan# 1731
 Delta R.T. -0.16 min
 Lab File: VX002364.D
 Acq: 06 Jun 2018 20:22

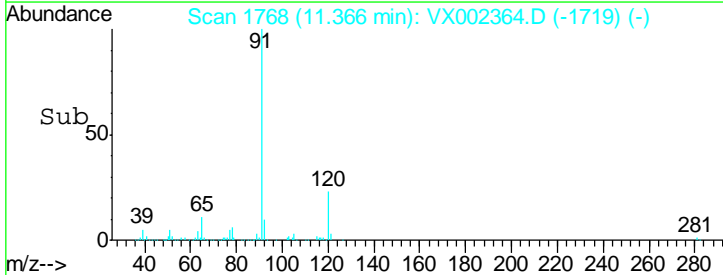
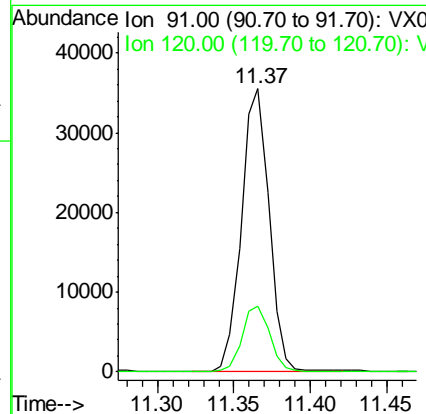
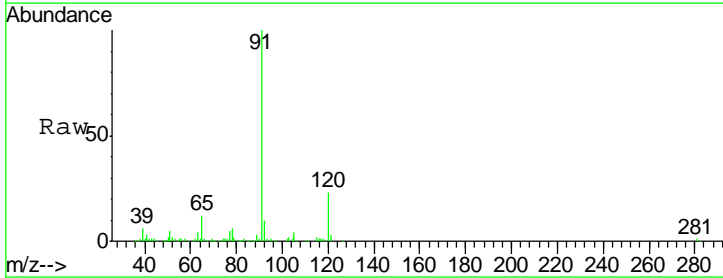
Instrument : MSVOA_X
 ClientSampled :

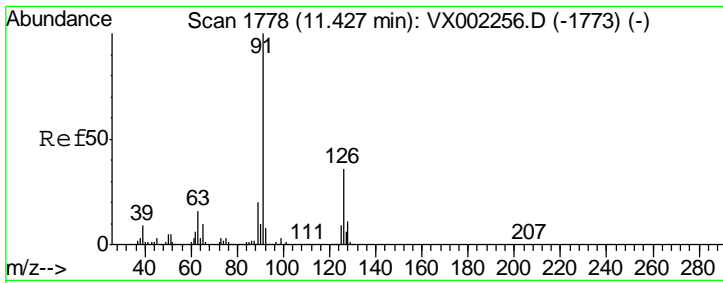
Tgt Ion: 75 Resp: 88109
 Ion Ratio Lower Upper
 75 100
 77 1.3 22.8 68.3#



#78
 n-propylbenzene
 Concen: 3.50 ug/l
 RT: 11.37 min Scan# 1768
 Delta R.T. -0.00 min
 Lab File: VX002364.D
 Acq: 06 Jun 2018 20:22

Tgt Ion: 91 Resp: 44594
 Ion Ratio Lower Upper
 91 100
 120 23.5 11.8 35.4

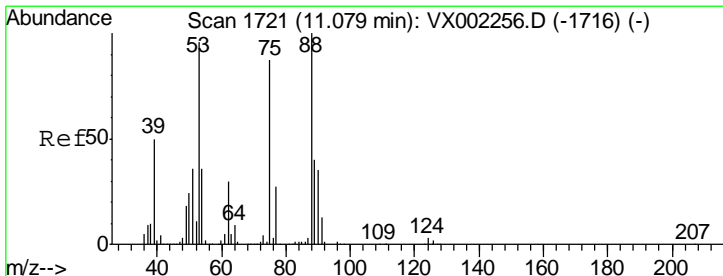
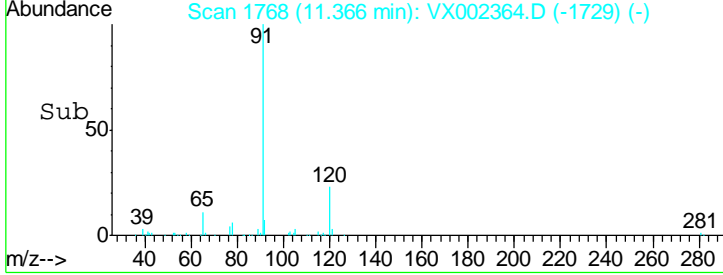
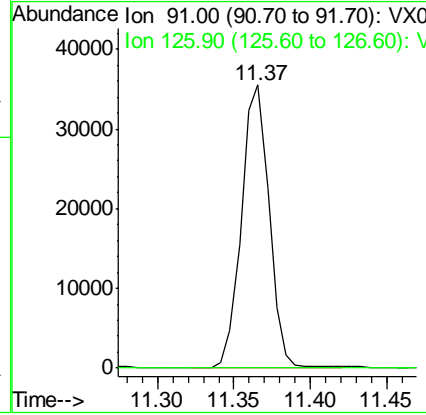
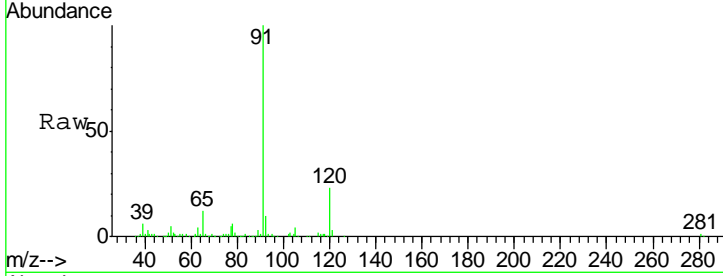




#79
 2-Chlorotoluene
 Concen: 5.55 ug/l
 RT: 11.37 min Scan# 1768
 Delta R.T. -0.06 min
 Lab File: VX002364.D
 Acq: 06 Jun 2018 20:22

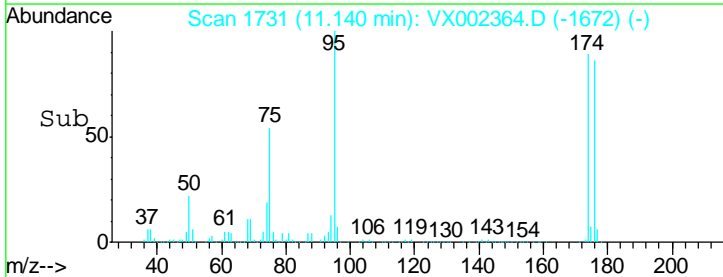
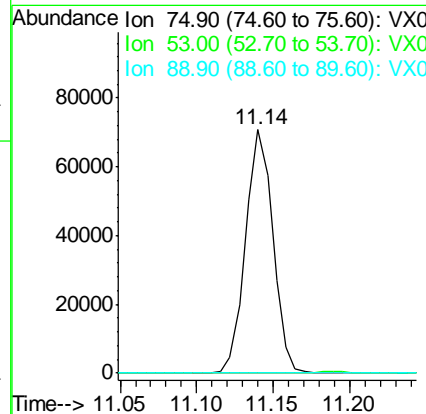
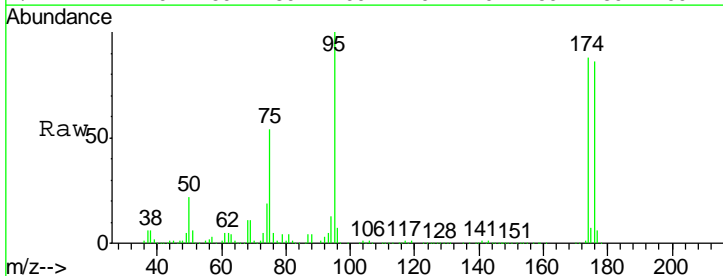
Instrument : MSVOA_X
 ClientSampled :

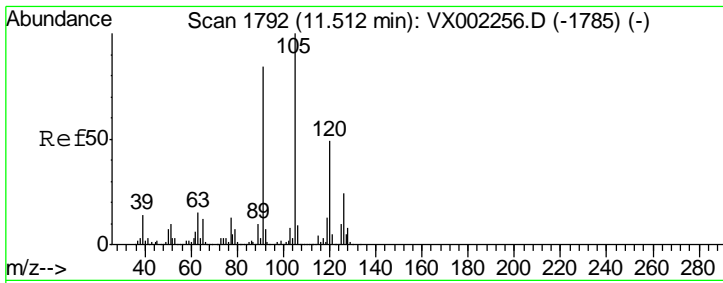
Tgt Ion	Resp	Lower	Upper
91	100		
126	0.2	17.7	53.1#



#81
 trans-1,4-Dichloro-2-butene
 Concen: 85.48 ug/l
 RT: 11.14 min Scan# 1731
 Delta R.T. 0.06 min
 Lab File: VX002364.D
 Acq: 06 Jun 2018 20:22

Tgt Ion	Resp	Lower	Upper
75	100		
53	0.0	86.8	130.2#
89	0.0	38.2	57.2#

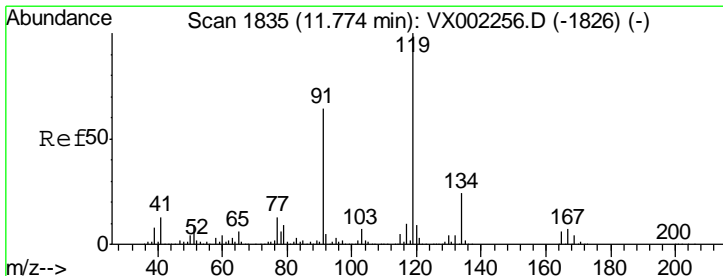
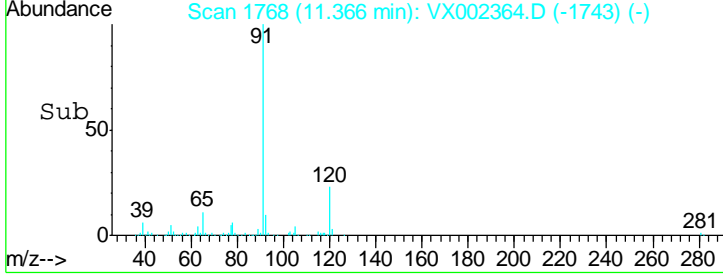
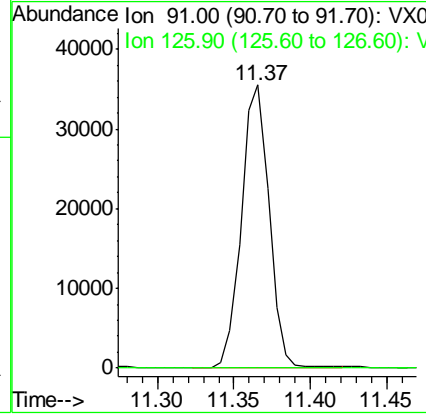
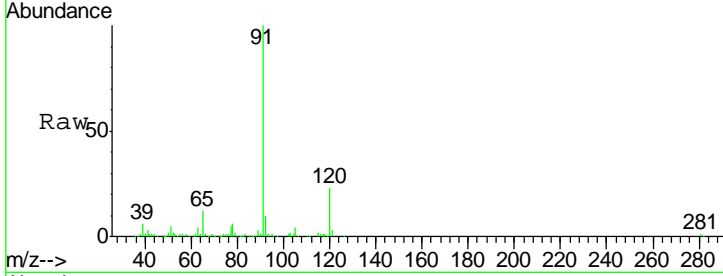




#82
 4-Chlorotoluene
 Concen: 4.81 ug/l
 RT: 11.37 min Scan# 1768
 Delta R.T. -0.15 min
 Lab File: VX002364.D
 Acq: 06 Jun 2018 20:22

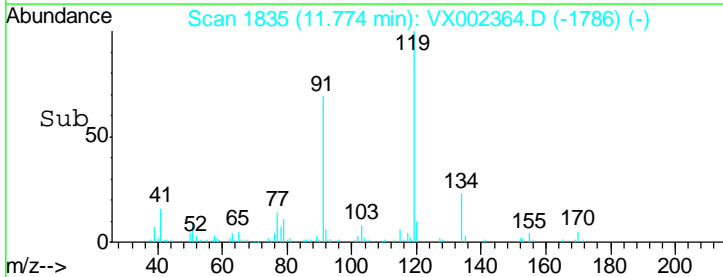
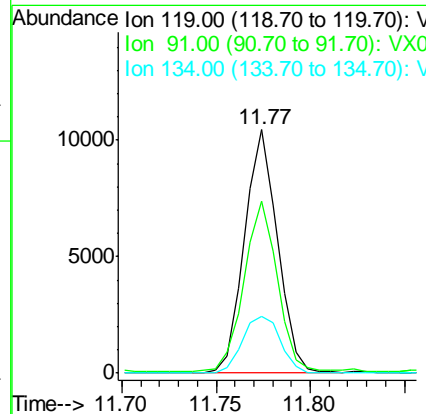
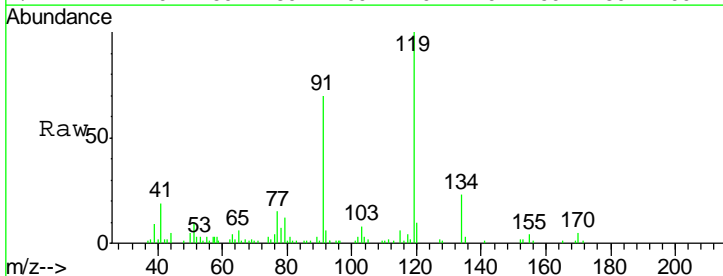
Instrument : MSVOA_X
 ClientSampled :

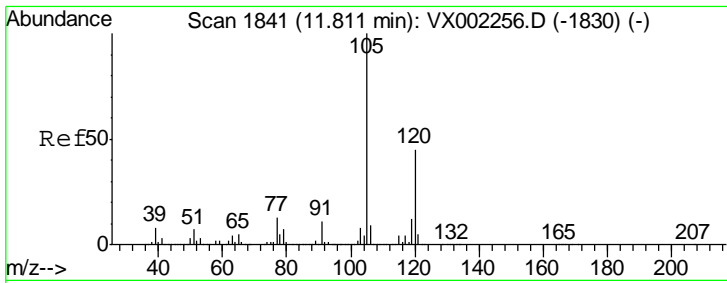
Tgt Ion	Resp	Lower	Upper
91	100		
126	0.2	15.4	46.4#



#83
 tert-Butylbenzene
 Concen: 1.33 ug/l
 RT: 11.77 min Scan# 1835
 Delta R.T. -0.00 min
 Lab File: VX002364.D
 Acq: 06 Jun 2018 20:22

Tgt Ion	Resp	Lower	Upper
119	100		
91	70.6	30.3	90.9
134	26.5	11.7	35.1

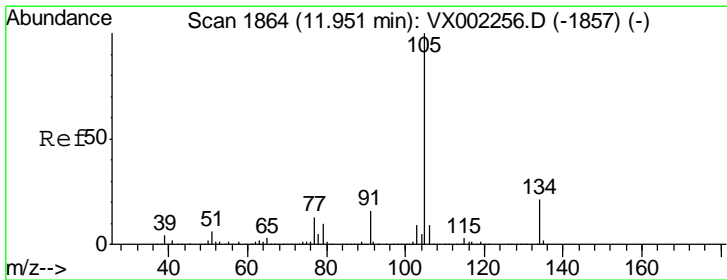
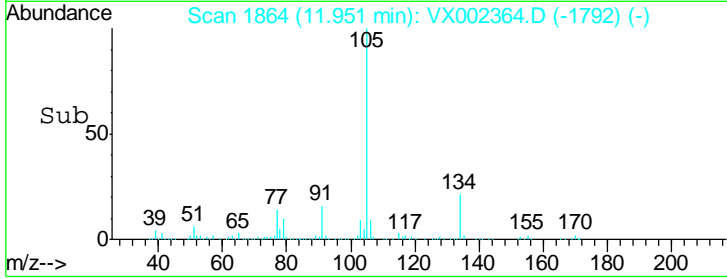
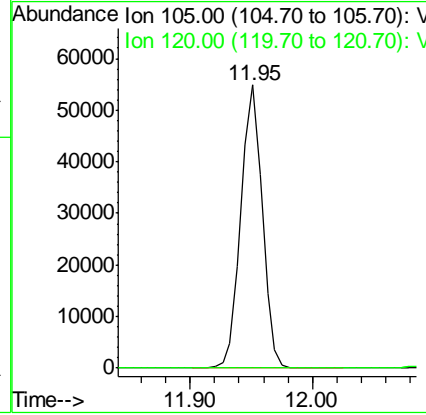
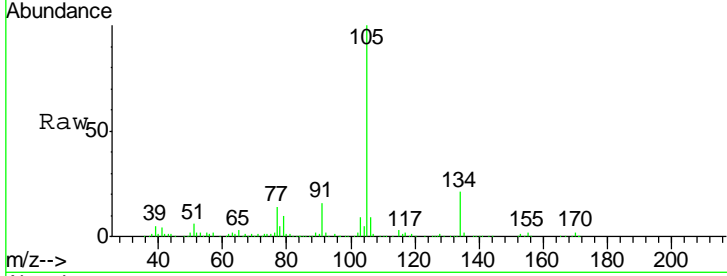




#84
 1,2,4-Trimethylbenzene
 Concen: 6.54 ug/l
 RT: 11.95 min Scan# 1864
 Delta R.T. 0.14 min
 Lab File: VX002364.D
 Acq: 06 Jun 2018 20:22

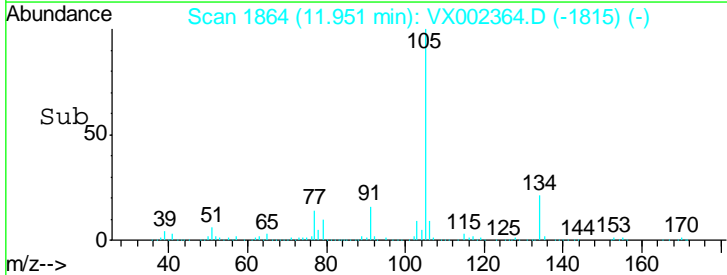
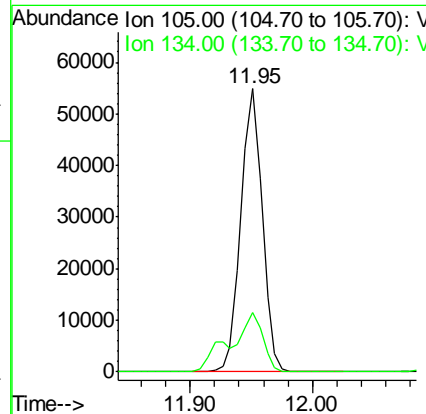
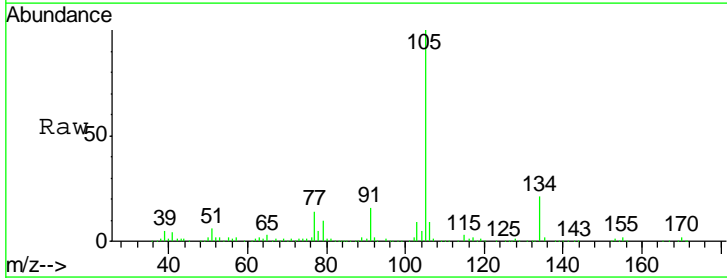
Instrument :
 MSVOA_X
 ClientSampled :

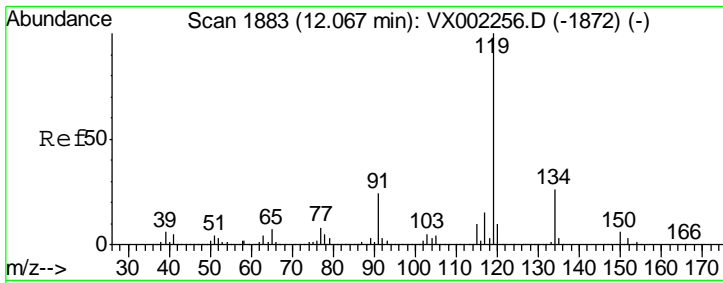
Tgt Ion:105 Resp: 66163
 Ion Ratio Lower Upper
 105 100
 120 0.2 22.3 66.8#



#85
 sec-Butylbenzene
 Concen: 5.90 ug/l
 RT: 11.95 min Scan# 1864
 Delta R.T. -0.00 min
 Lab File: VX002364.D
 Acq: 06 Jun 2018 20:22

Tgt Ion:105 Resp: 66163
 Ion Ratio Lower Upper
 105 100
 134 21.0 10.4 31.1

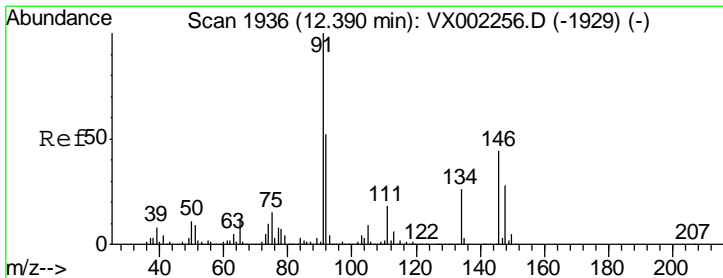
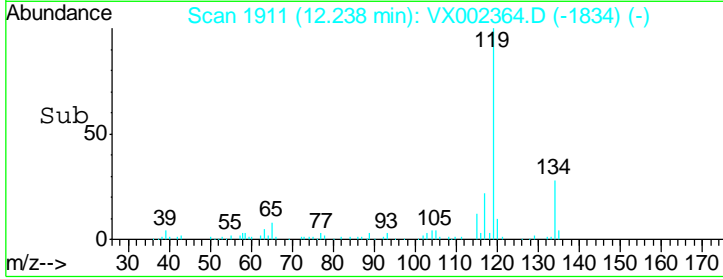
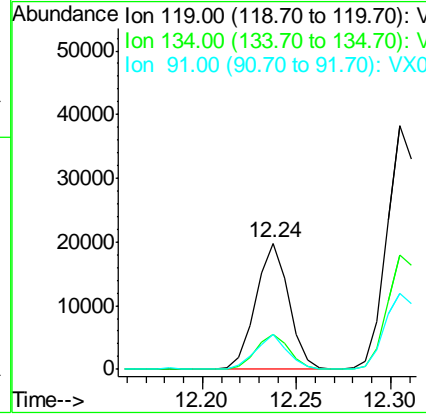
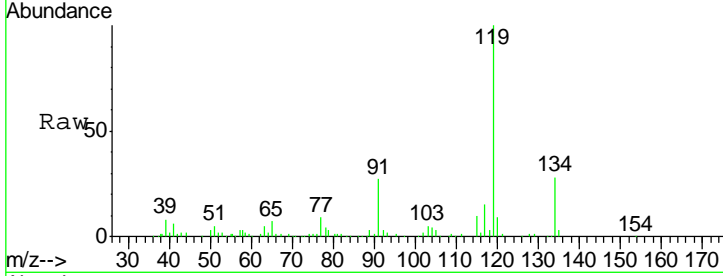




#86
 p-Isopropyltoluene
 Concen: 2.34 ug/l
 RT: 12.24 min Scan# 1911
 Delta R.T. 0.17 min
 Lab File: VX002364.D
 Acq: 06 Jun 2018 20:22

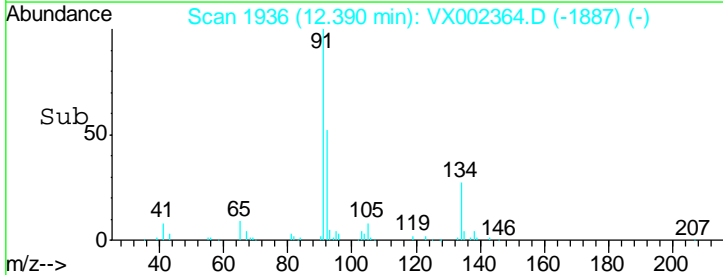
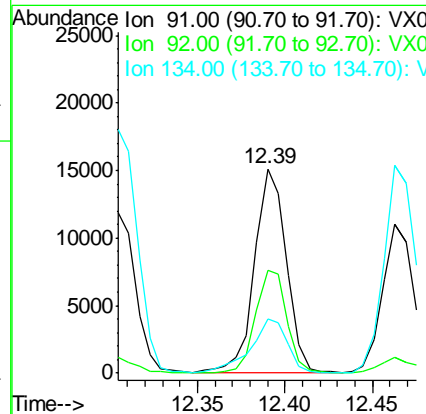
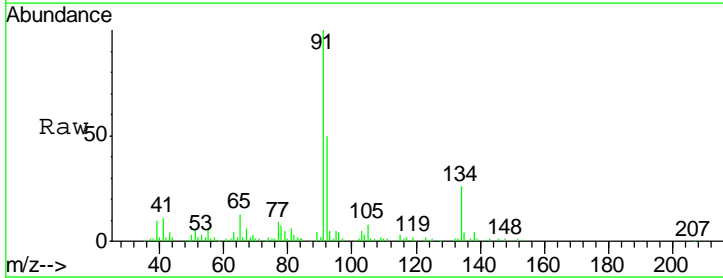
Instrument : MSVOA_X
 ClientSampled :

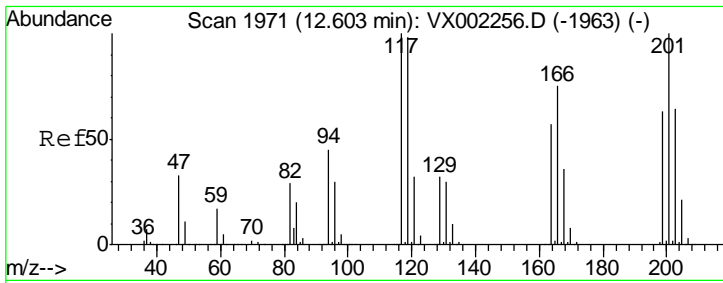
Tgt Ion	Resp	Lower	Upper
119	23956		
134	28.4	13.4	40.1
91	27.2	11.9	35.7



#89
 n-Butylbenzene
 Concen: 2.24 ug/l
 RT: 12.39 min Scan# 1936
 Delta R.T. -0.00 min
 Lab File: VX002364.D
 Acq: 06 Jun 2018 20:22

Tgt Ion	Resp	Lower	Upper
91	19206		
92	49.9	26.0	78.0
134	31.1	13.5	40.5

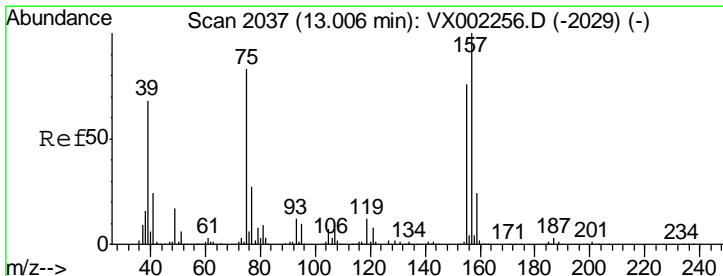
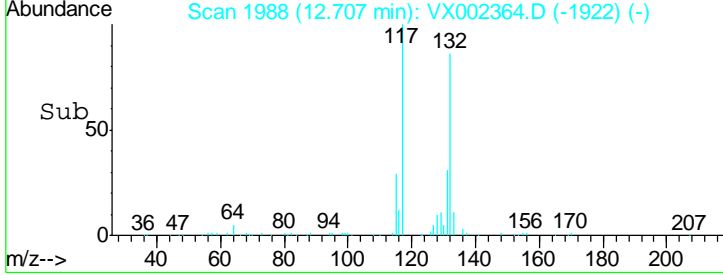
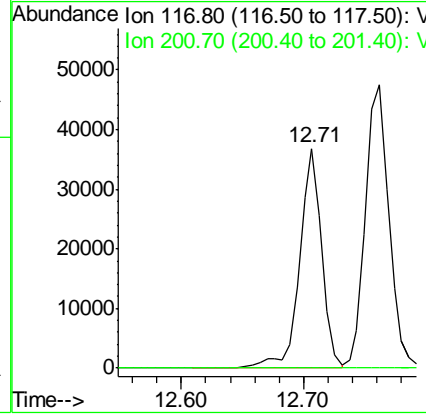
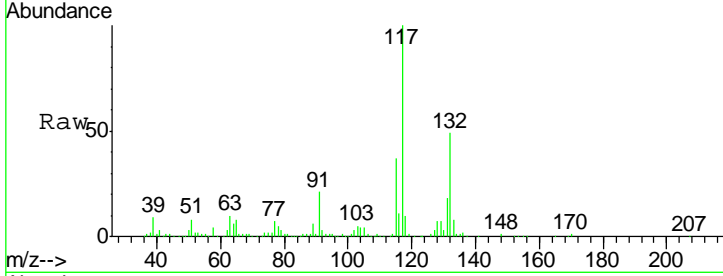




#90
 Hexachloroethane
 Concen: 28.59 ug/l
 RT: 12.71 min Scan# 1988
 Delta R.T. 0.10 min
 Lab File: VX002364.D
 Acq: 06 Jun 2018 20:22

Instrument : MSVOA_X
 ClientSampled :

Tgt Ion: 117 Resp: 46621
 Ion Ratio Lower Upper
 117 100
 201 0.0 49.0 147.0#



#92
 1,2-Dibromo-3-Chloropropane
 Concen: 0.26 ug/l
 RT: 13.03 min Scan# 2041
 Delta R.T. 0.02 min
 Lab File: VX002364.D
 Acq: 06 Jun 2018 20:22

Tgt Ion: 75 Resp: 207
 Ion Ratio Lower Upper
 75 100
 155 0.0 45.8 137.4#
 157 0.0 60.1 180.3#

