

Data Path : Z:\VOASRV\HPCHEM1\MSVOA X\DATA\VX061318\
 Data File : VX002518.D
 Acq On : 13 Jun 2018 19:35
 Operator : JC/MD
 Sample : J3402-04
 Misc : 5.0mL/MSVOA X/WATER
 ALS Vial : 19 Sample Multiplier: 1

Instrument :
 MSVOA_X
 ClientSampleId :
 LF5-0072

Integration Parameters: RTEINT.P
 Integrator: RTE
 Smoothing : ON Filtering: 5
 Sampling : 1 Min Area: 3 % of largest Peak
 Start Thrs: 0.2 Max Peaks: 100
 Stop Thrs : 0 Peak Location: TOP

If leading or trailing edge < 100 prefer < Baseline drop else tangent >
 Peak separation: 5

Method : Z:\VOASRV\HPCHEM1\MSVOA_X\METHOD\82X060418W.M
 Title : SW846 8260

Signal : TIC

peak #	R.T. min	first scan	max scan	last scan	PK TY	peak height	corr. area	corr. % max.	% of total
1	1.075	76	80	94	rBV	1148189	1445889	100.00%	19.296%
2	2.447	301	305	310	rBV	8992	15397	1.06%	0.205%
3	2.623	328	334	344	rVB	38405	71773	4.96%	0.958%
4	4.781	672	688	698	rBV2	9239	34984	2.42%	0.467%
5	5.507	797	807	820	rBV	145751	415939	28.77%	5.551%
6	5.665	822	833	848	rVV	202005	570572	39.46%	7.615%
7	6.074	888	900	918	rBV	170494	442365	30.59%	5.904%
8	6.866	1020	1030	1047	rBV	297839	705922	48.82%	9.421%
9	8.720	1327	1334	1350	rBV	819615	1253034	86.66%	16.722%
10	10.116	1554	1563	1572	rBV	637019	840290	58.12%	11.214%
11	11.140	1724	1731	1747	rBV	679591	845361	58.47%	11.282%
12	12.085	1878	1886	1894	rBV	668757	851671	58.90%	11.366%

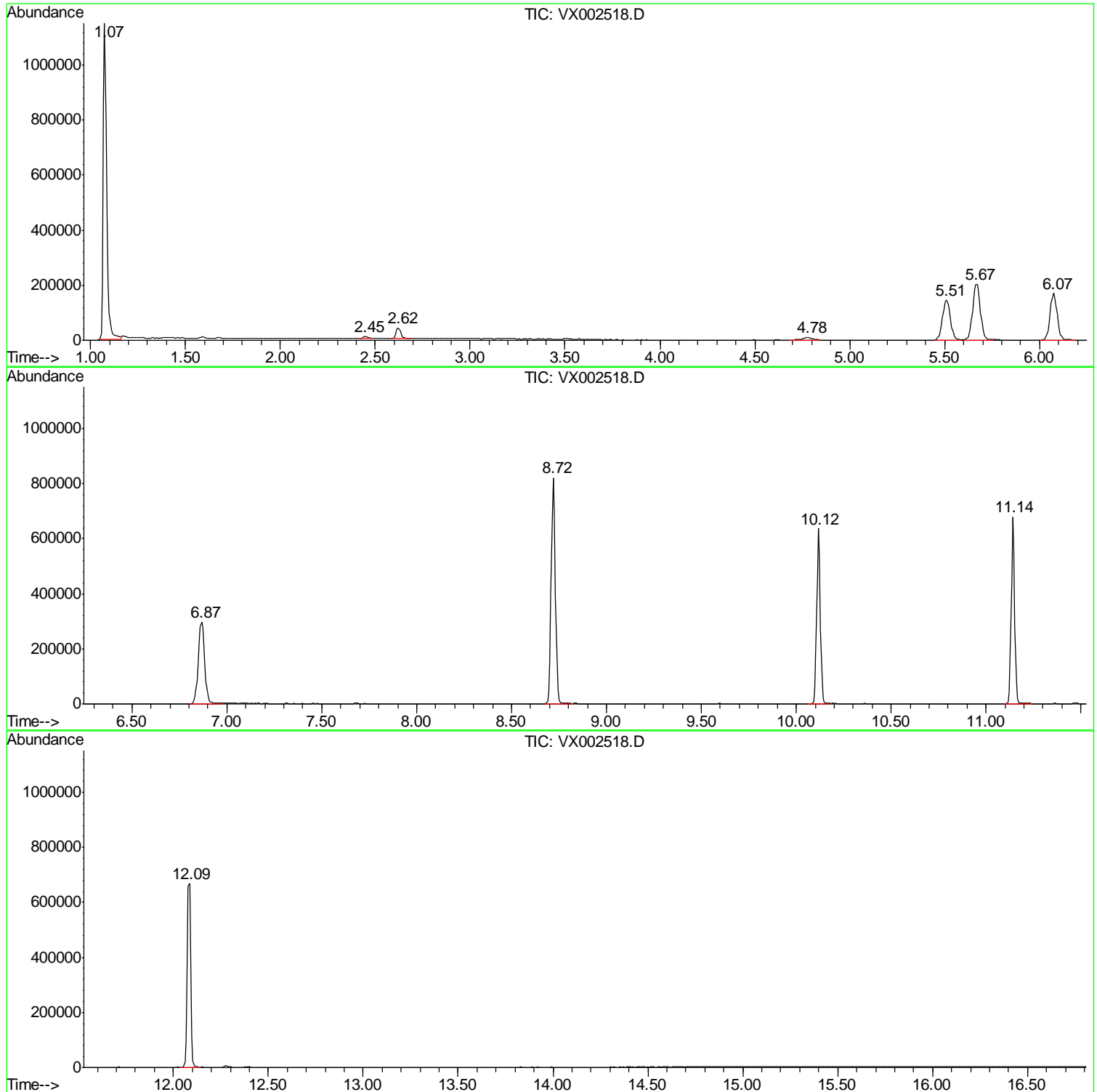
Sum of corrected areas: 7493197

Data Path : Z:\VOASRV\HPCHEM1\MSVOA X\DATA\VX061318\
Data File : VX002518.D
Acq On : 13 Jun 2018 19:35
Operator : JC/MD
Sample : J3402-04
Misc : 5.0mL/MSVOA X/WATER
ALS Vial : 19 Sample Multiplier: 1

Instrument :
MSVOA_X
ClientSampleId :
LF5-0072

Quant Method : Z:\VOASRV\HPCHEM1\MSVOA_X\METHOD\82X060418W.M
Quant Title : SW846 8260

TIC Library : C:\DATABASE\NIST11.L
TIC Integration Parameters: LSCINT.P



Data Path : Z:\VOASRV\HPCHEM1\MSVOA_X\DATA\VX061318\
Data File : VX002518.D
Acq On : 13 Jun 2018 19:35
Operator : JC/MD
Sample : J3402-04
Misc : 5.0mL/MSVOA_X/WATER
ALS Vial : 19 Sample Multiplier: 1

Instrument :
MSVOA_X
ClientSampleId :
LF5-0072

Quant Method : Z:\VOASRV\HPCHEM1\MSVOA_X\METHOD\82X060418W.M
Quant Title : SW846 8260

TIC Library : C:\DATABASE\NIST11.L
TIC Integration Parameters: LSCINT.P

Peak Number 1 Isopropyl Alcohol Concentration Rank 2

R.T.	EstConc	Area	Relative to ISTD	R.T.
2.62	6.29 ug/l	71773	Pentafluorobenzene	5.67

Hit#	of	5	Tentative ID	MW	MolForm	CAS#	Qual
1			Isopropyl Alcohol	60	C3H8O	000067-63-0	80
2			Propane, 2-ethoxy-	88	C5H12O	000625-54-7	72
3			Formic acid, 1-methylethyl ester	88	C4H8O2	000625-55-8	39
4			Hydrazine, ethyl-	60	C2H8N2	000624-80-6	39
5			2-Pentanol	88	C5H12O	006032-29-7	9

Data Path : Z:\VOASRV\HPCHEM1\MSVOA_X\DATA\VX061318\
Data File : VX002518.D
Acq On : 13 Jun 2018 19:35
Operator : JC/MD
Sample : J3402-04
Misc : 5.0mL/MSVOA_X/WATER
ALS Vial : 19 Sample Multiplier: 1

Instrument :
MSVOA_X
ClientSampleId :
LF5-0072

Quant Method : Z:\VOASRV\HPCHEM1\MSVOA_X\METHOD\82X060418W.M
Quant Title : SW846 8260

TIC Library : C:\DATABASE\NIST11.L
TIC Integration Parameters: LSCINT.P

TIC Top Hit name	RT	EstConc	Units	Response	--Internal Standard--			
					#	RT	Resp	Conc
Isopropyl Alcohol	2.62	6.3	ug/l	71773	1	5.67	570572	50.0