

Data Path : Z:\VOASRV\HPCHEM1\MSVOA X\DATA\VX061418\
 Data File : VX002583.D
 Acq On : 15 Jun 2018 06:02
 Operator : JC/MD
 Sample : J3480-04
 Misc : 5.0mL/MSVOA X/WATER
 ALS Vial : 40 Sample Multiplier: 1

Instrument :
 MSVOA_X
 ClientSampleId :
 OILY-STONES

Quant Time: Jun 15 07:39:22 2018
 Quant Method : Z:\VOASRV\HPCHEM1\MSVOA_X\METHOD\82X060418W.M
 Quant Title : SW846 8260
 QLast Update : Tue Jun 05 03:22:35 2018
 Response via : Initial Calibration

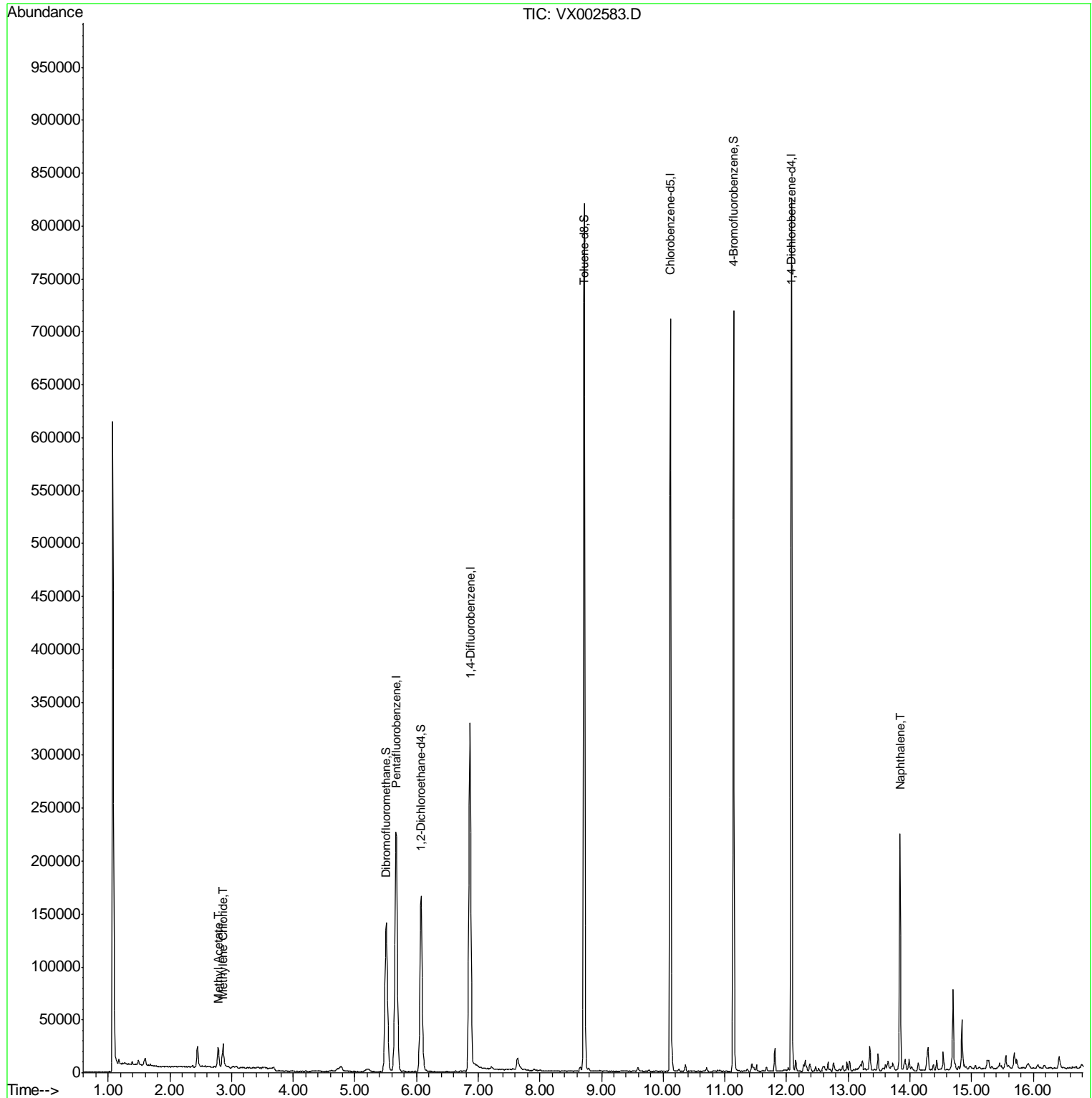
Internal Standards	R.T.	QIon	Response	Conc	Units	Dev(Min)
1) Pentafluorobenzene	5.67	168	223532	50.00	ug/l	0.00
34) 1,4-Difluorobenzene	6.87	114	324689	50.00	ug/l	0.00
63) Chlorobenzene-d5	10.12	117	300004	50.00	ug/l	0.00
72) 1,4-Dichlorobenzene-d4	12.09	152	171130	50.00	ug/l	0.00
System Monitoring Compounds						
33) 1,2-Dichloroethane-d4	6.07	65	155874	48.67	ug/l	0.00
Spiked Amount	50.000		Recovery	=	97.34%	
35) Dibromofluoromethane	5.51	113	114613	44.89	ug/l	0.00
Spiked Amount	50.000		Recovery	=	89.78%	
50) Toluene-d8	8.72	98	466643	47.68	ug/l	0.00
Spiked Amount	50.000		Recovery	=	95.36%	
62) 4-Bromofluorobenzene	11.14	95	164344	43.55	ug/l	0.00
Spiked Amount	50.000		Recovery	=	87.10%	
Target Compounds						
18) Methyl Acetate	2.78	43	22817	4.679	ug/l	98
20) Methylene Chloride	2.86	84	9752	1.159	ug/l	97
95) Naphthalene	13.84	128	133486	10.716	ug/l	99

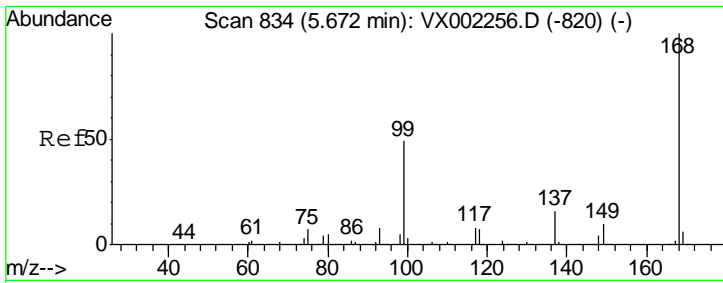
(#) = qualifier out of range (m) = manual integration (+) = signals summed

Data Path : Z:\VOASRV\HPCHEM1\MSVOA X\DATA\VX061418\
Data File : VX002583.D
Acq On : 15 Jun 2018 06:02
Operator : JC/MD
Sample : J3480-04
Misc : 5.0mL/MSVOA X/WATER
ALS Vial : 40 Sample Multiplier: 1

Instrument :
MSVOA_X
Client Sampled :
OILY-STONES

Quant Time: Jun 15 07:39:22 2018
Quant Method : Z:\VOASRV\HPCHEM1\MSVOA_X\METHOD\82X060418W.M
Quant Title : SW846 8260
QLast Update : Tue Jun 05 03:22:35 2018
Response via : Initial Calibration

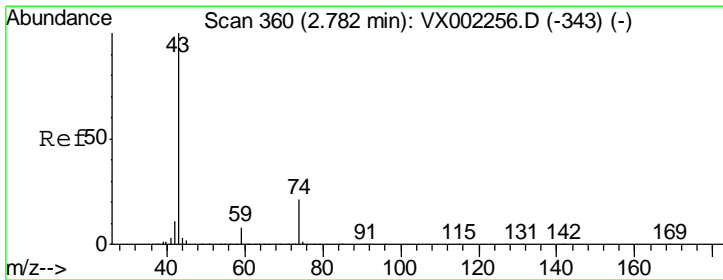
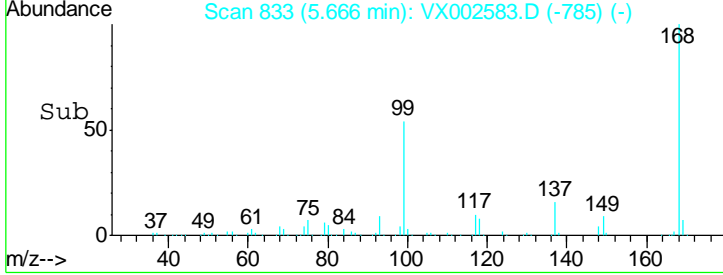
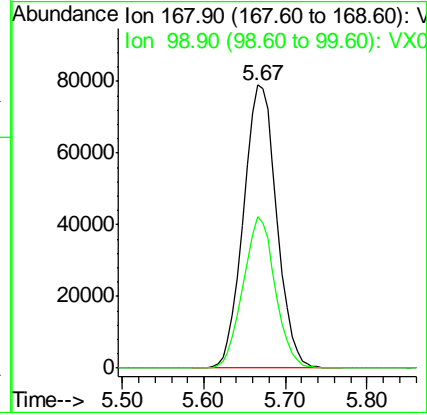
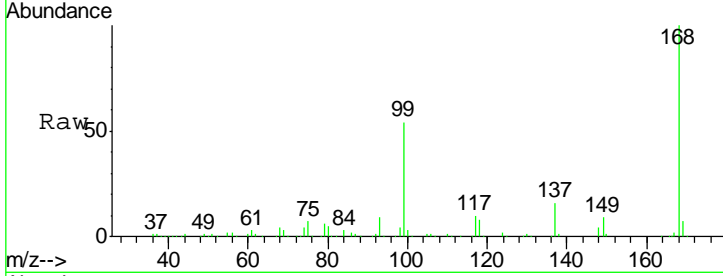




#1
 Pentafluorobenzene
 Concen: 50.000 ug/l
 RT: 5.67 min Scan# 833
 Delta R.T. -0.01 min
 Lab File: VX002583.D
 Acq: 15 Jun 2018 06:02

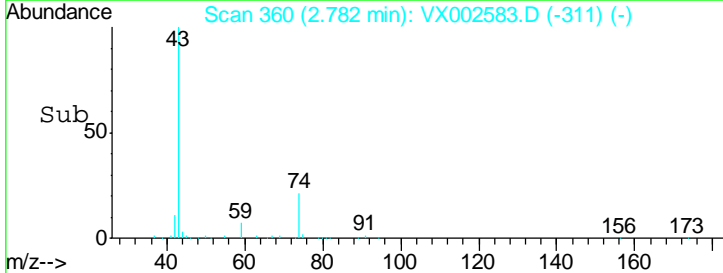
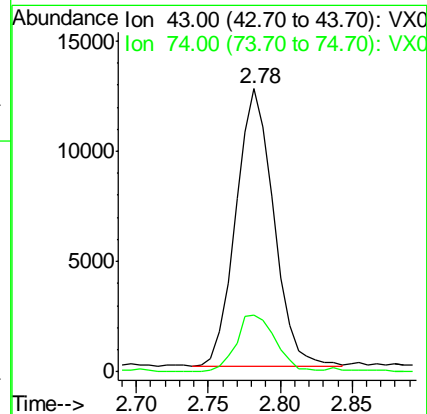
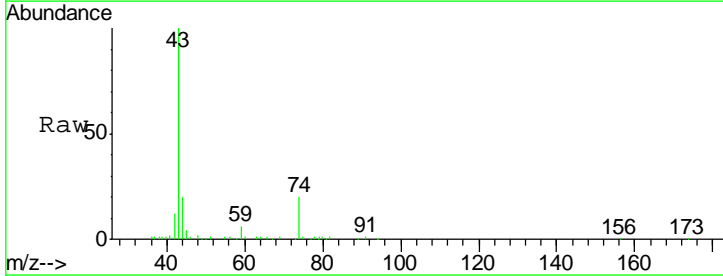
Instrument :
 MSVOA_X
 ClientSampled :
 OILY-STONES

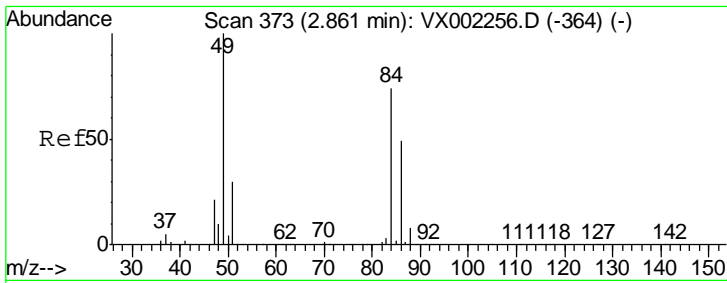
Tgt Ion: 168 Resp: 223532
 Ion Ratio Lower Upper
 168 100
 99 53.7 39.3 58.9



#18
 Methyl Acetate
 Concen: 4.679 ug/l
 RT: 2.78 min Scan# 360
 Delta R.T. -0.00 min
 Lab File: VX002583.D
 Acq: 15 Jun 2018 06:02

Tgt Ion: 43 Resp: 22817
 Ion Ratio Lower Upper
 43 100
 74 21.7 16.7 25.1

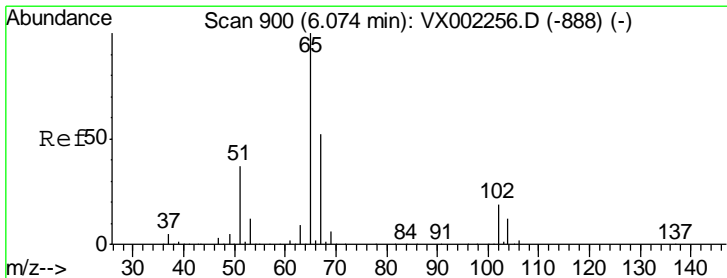
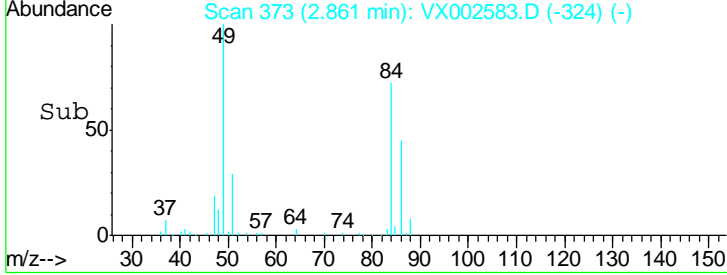
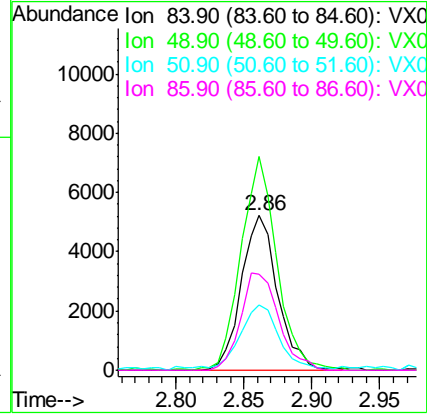
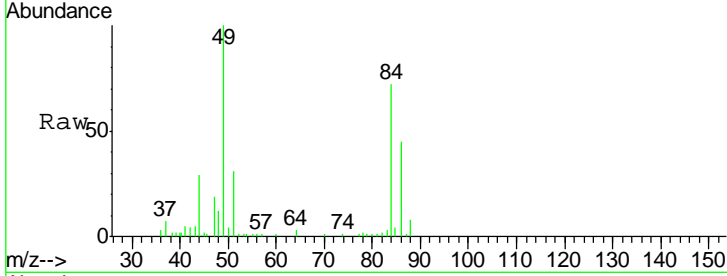




#20
 Methylene Chloride
 Concen: 1.159 ug/l
 RT: 2.86 min Scan# 373
 Delta R.T. 0.00 min
 Lab File: VX002583.D
 Acq: 15 Jun 2018 06:02

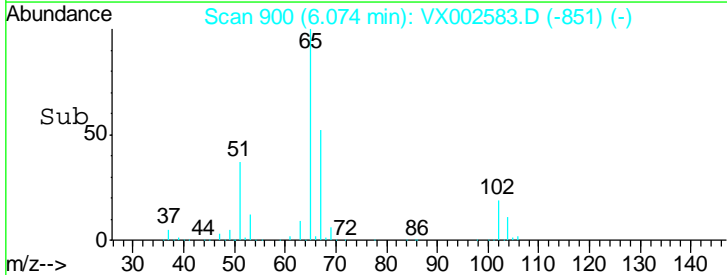
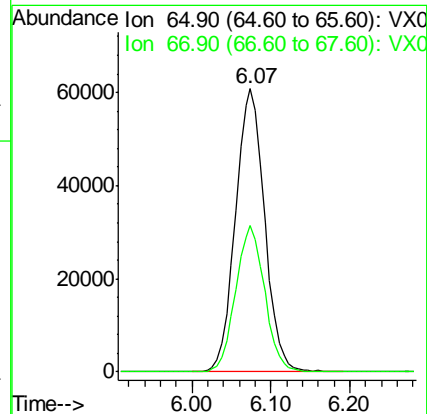
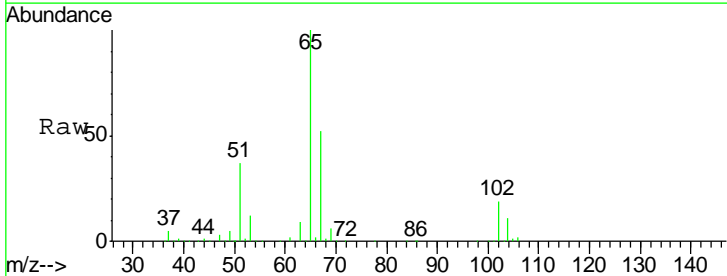
Instrument :
 MSVOA_X
ClientSampled :
 OILY-STONES

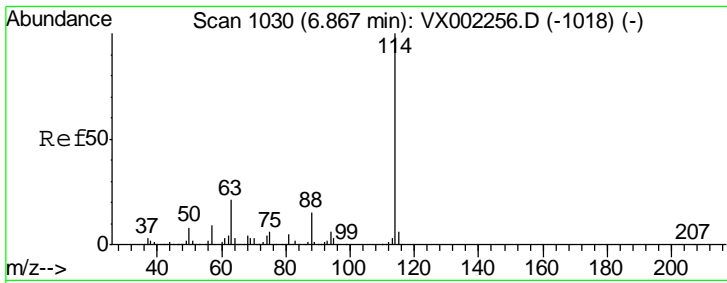
Tgt Ion	Resp	Lower	Upper
84	9752		
49	138.4	107.8	161.6
51	40.6	32.8	49.2
86	62.4	52.5	78.7



#33
 1,2-Dichloroethane-d4
 Concen: 48.672 ug/l
 RT: 6.07 min Scan# 900
 Delta R.T. 0.00 min
 Lab File: VX002583.D
 Acq: 15 Jun 2018 06:02

Tgt Ion	Resp	Lower	Upper
65	155874		
67	51.8	0.0	102.6

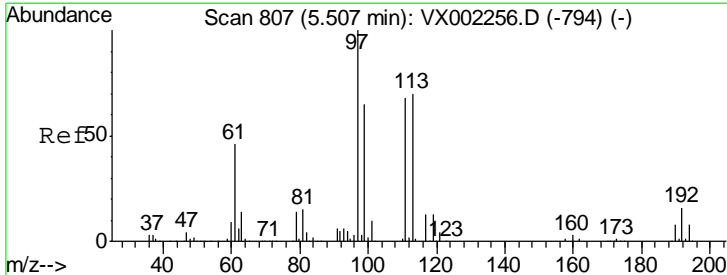
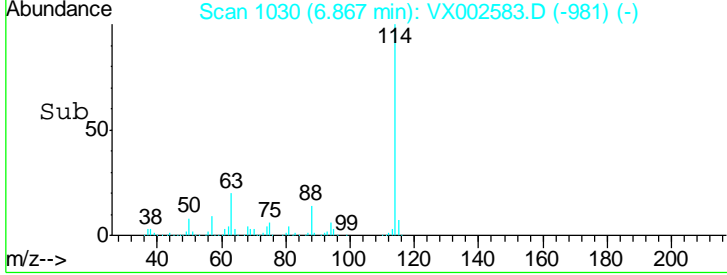
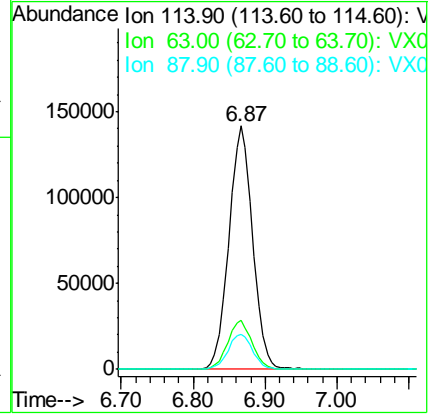
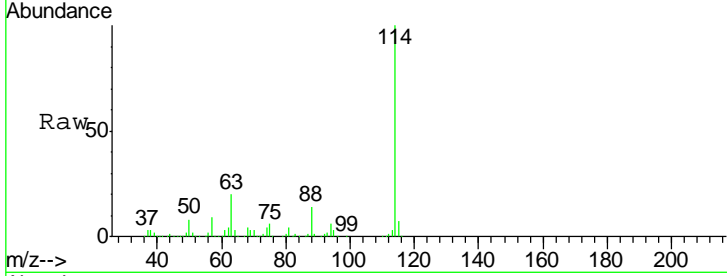




#34
 1,4-Difluorobenzene
 Concen: 50.000 ug/l
 RT: 6.87 min Scan# 1030
 Delta R.T. -0.00 min
 Lab File: VX002583.D
 Acq: 15 Jun 2018 06:02

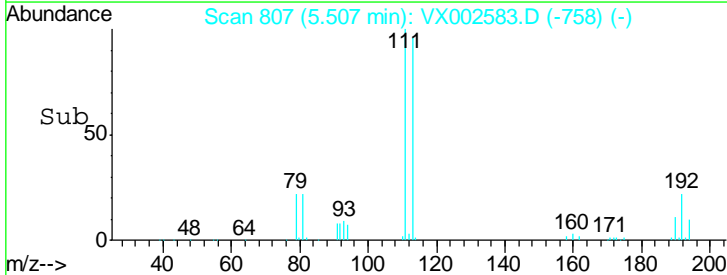
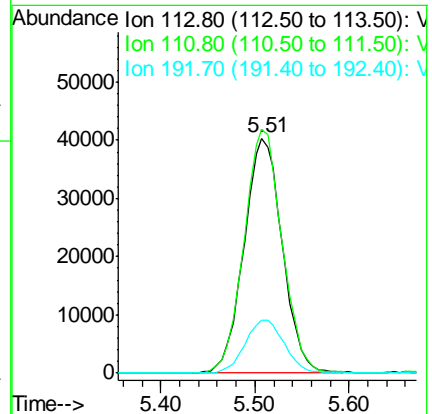
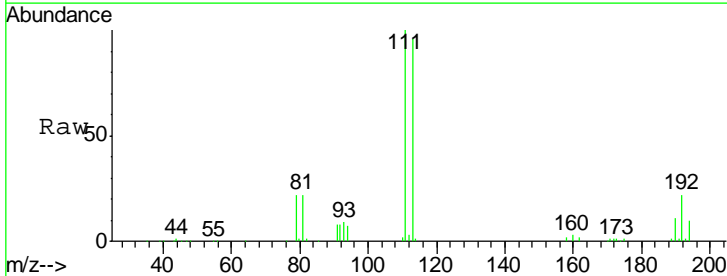
Instrument :
 MSVOA_X
 ClientSampled :
 OILY-STONES

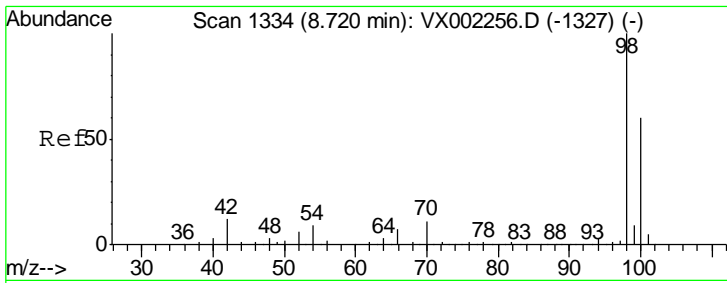
Tgt Ion	Resp	Lower	Upper
114	100		
63	20.0	0.0	41.4
88	14.3	0.0	30.0



#35
 Dibromofluoromethane
 Concen: 44.887 ug/l
 RT: 5.51 min Scan# 807
 Delta R.T. -0.00 min
 Lab File: VX002583.D
 Acq: 15 Jun 2018 06:02

Tgt Ion	Resp	Lower	Upper
113	100		
111	103.4	81.4	122.0
192	23.1	19.1	28.7

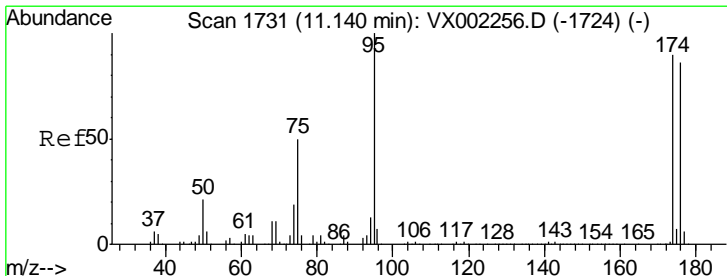
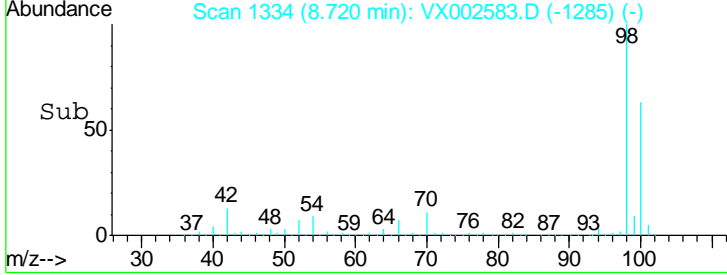
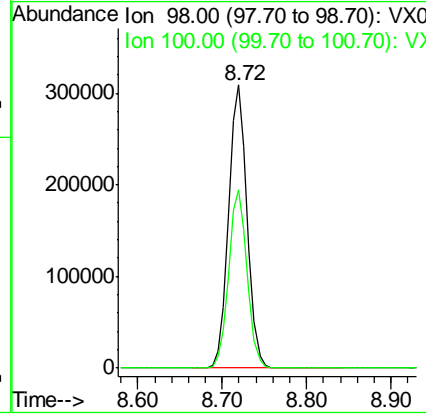
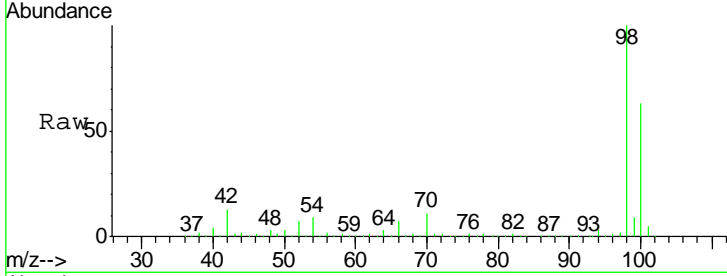




#50
 Toluene-d8
 Concen: 47.680 ug/l
 RT: 8.72 min Scan# 1334
 Delta R.T. -0.00 min
 Lab File: VX002583.D
 Acq: 15 Jun 2018 06:02

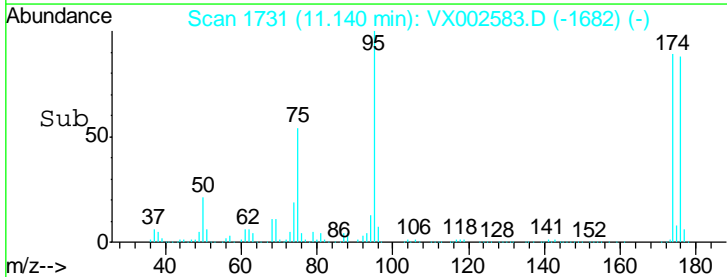
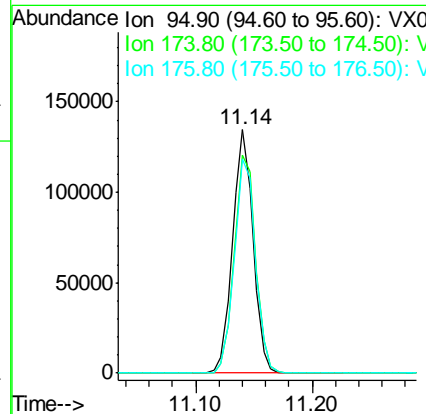
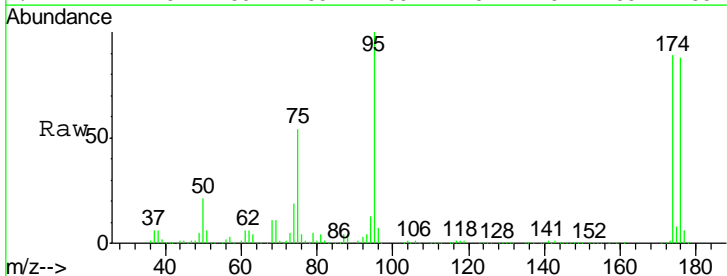
Instrument :
 MSVOA_X
ClientSampled :
 OILY-STONES

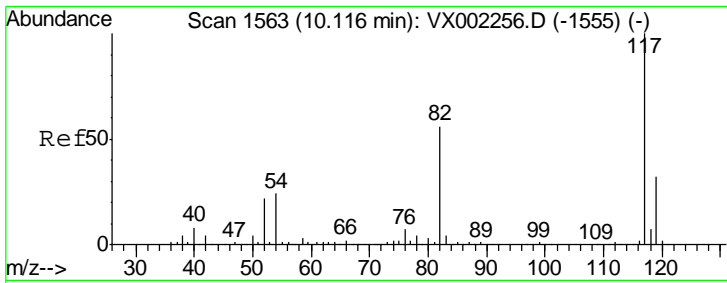
Tot Ion: 98 Resp: 466643
 Ion Ratio Lower Upper
 98 100
 100 62.5 50.9 76.3



#62
 4-Bromofluorobenzene
 Concen: 43.547 ug/l
 RT: 11.14 min Scan# 1731
 Delta R.T. -0.00 min
 Lab File: VX002583.D
 Acq: 15 Jun 2018 06:02

Tgt Ion: 95 Resp: 164344
 Ion Ratio Lower Upper
 95 100
 174 93.8 0.0 187.4
 176 91.3 0.0 181.0

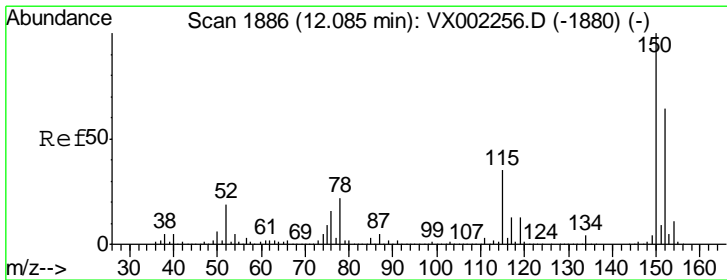
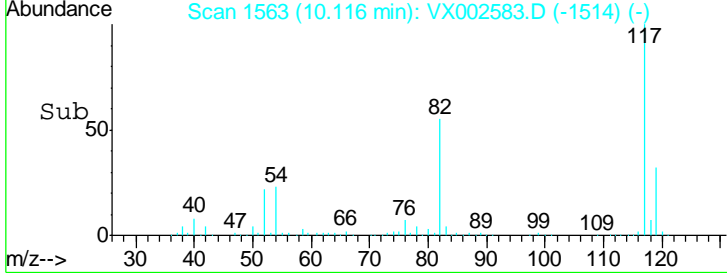
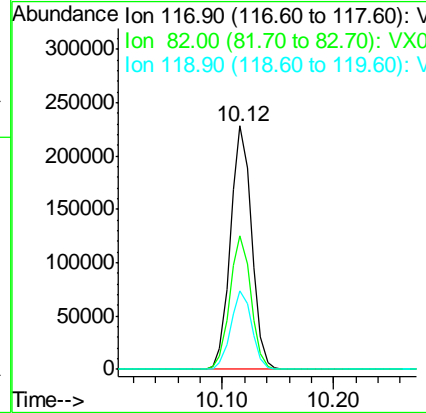
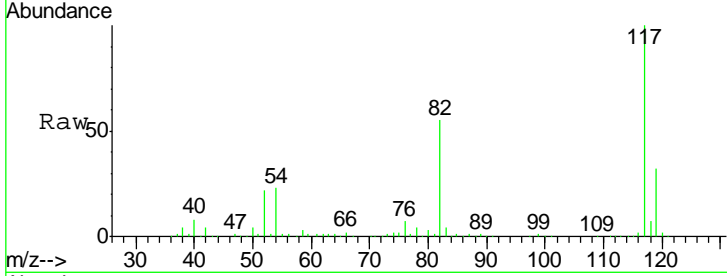




#63
 Chlorobenzene-d5
 Concen: 50.000 ug/l
 RT: 10.12 min Scan# 1563
 Delta R.T. -0.00 min
 Lab File: VX002583.D
 Acq: 15 Jun 2018 06:02

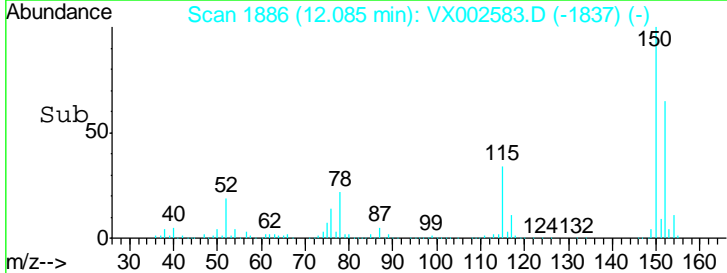
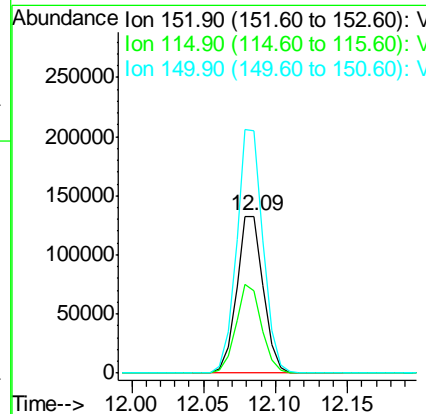
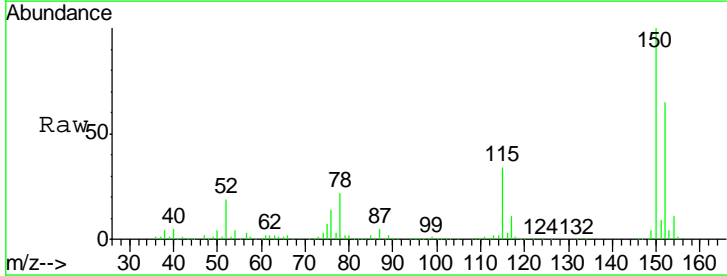
Instrument :
 MSVOA_X
 ClientSampled :
 OILY-STONES

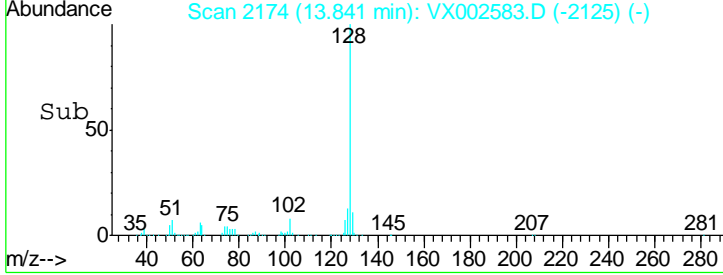
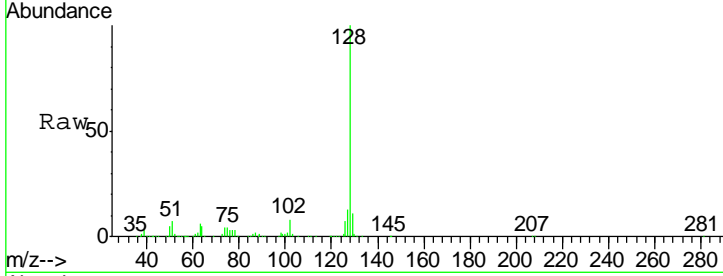
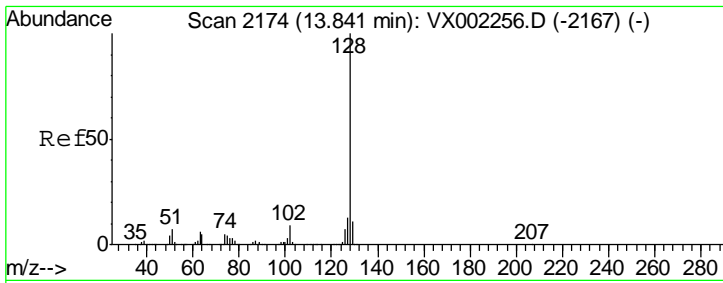
Tgt Ion	Resp	Lower	Upper
117	100		
82	54.8	45.0	67.4
119	32.3	25.8	38.6



#72
 1,4-Dichlorobenzene-d4
 Concen: 50.000 ug/l
 RT: 12.09 min Scan# 1886
 Delta R.T. -0.00 min
 Lab File: VX002583.D
 Acq: 15 Jun 2018 06:02

Tgt Ion	Resp	Lower	Upper
152	100		
115	54.8	40.1	120.2
150	154.4	0.0	347.2





#95
 Naphthalene
 Concen: 10.716 ug/l
 RT: 13.84 min Scan# 2174
 Delta R.T. -0.00 min
 Lab File: VX002583.D
 Acq: 15 Jun 2018 06:02

Instrument : MSVOA_X
 ClientSampled : OILY-STONES

Tot Ion	Ratio	Lower	Upper
128	100		
127	13.5	10.4	15.6
129	11.0	8.6	13.0

