

Data Path : Z:\VOASRV\HPCHEM1\MSVOA X\DATA\VX061618\
 Data File : VX002655.D
 Acq On : 16 Jun 2018 18:59
 Operator : JC/MD
 Sample : J3467-05DL 20X
 Misc : 5.0mL/MSVOA X/WATER
 ALS Vial : 5 Sample Multiplier: 1

Instrument :
 MSVOA_X
 ClientSampleId :
 PR-MW-05-061118DL

Quant Time: Jun 18 01:39:15 2018
 Quant Method : Z:\VOASRV\HPCHEM1\MSVOA_X\METHOD\82X061518W.M
 Quant Title : SW846 8260
 QLast Update : Sat Jun 16 01:37:33 2018
 Response via : Initial Calibration

Internal Standards	R.T.	QIon	Response	Conc	Units	Dev(Min)
1) Pentafluorobenzene	5.67	168	219025	50.00	ug/l	0.00
34) 1,4-Difluorobenzene	6.87	114	312823	50.00	ug/l	0.00
63) Chlorobenzene-d5	10.12	117	293563	50.00	ug/l	0.00
72) 1,4-Dichlorobenzene-d4	12.08	152	175193	50.00	ug/l	0.00

System Monitoring Compounds

33) 1,2-Dichloroethane-d4	6.07	65	148103	44.50	ug/l	0.00
Spiked Amount	50.000		Recovery	=	89.00%	
35) Dibromofluoromethane	5.51	113	116339	46.60	ug/l	0.00
Spiked Amount	50.000		Recovery	=	93.20%	
50) Toluene-d8	8.72	98	449424	47.41	ug/l	0.00
Spiked Amount	50.000		Recovery	=	94.82%	
62) 4-Bromofluorobenzene	11.14	95	162844	45.33	ug/l	0.00
Spiked Amount	50.000		Recovery	=	90.66%	

Target Compounds

						Qvalue
3) Chloromethane	1.33	50	680	0.246	ug/l	97
5) Bromomethane	1.65	94	1847	1.067	ug/l #	74
6) Chloroethane	1.73	64	519	0.274	ug/l	99
10) Methyl Iodide	2.51	142	3292	6.020	ug/l	95
11) Tert butyl alcohol	3.03	59	1255	1.824	ug/l #	73
13) Acrolein	2.27	56	393	8.048	ug/l #	1
15) Acrylonitrile	3.15	53	397	0.264	ug/l #	1
16) Acetone	2.45	43	1362	0.928	ug/l	94
17) Carbon Disulfide	2.57	76	2558	0.441	ug/l #	89
18) Methyl Acetate	2.78	43	1244	0.318	ug/l	93
20) Methylene Chloride	2.87	84	812	0.270	ug/l #	81
21) trans-1,2-Dichloroethene	3.18	96	563	0.212	ug/l #	66
25) 2-Butanone	4.71	43	704	0.365	ug/l #	52
29) Tetrahydrofuran	5.17	42	568	0.449	ug/l #	72
31) Cyclohexane	5.59	56	1450	0.369	ug/l #	80
36) 1,1-Dichloropropene	5.67	75	15510	4.668	ug/l #	50
38) Carbon Tetrachloride	5.67	117	21014	6.352	ug/l #	16
39) Methylcyclohexane	7.46	83	1393	0.359	ug/l #	87
49) 1,4-Dioxane	7.88	88	20	0.332	ug/l #	22
52) Toluene	8.79	92	59269	9.327	ug/l	100
53) t-1,3-Dichloropropene	8.45	75	236	2.448	ug/l	90
54) cis-1,3-Dichloropropene	9.05	75	301	3.285	ug/l	93
60) Dibromochloromethane	9.59	129	97	3.792	ug/l #	11
65) Chlorobenzene	10.14	112	2147	0.298	ug/l #	87
67) Ethyl Benzene	10.26	91	306520	25.207	ug/l	98
68) m/p-Xylenes	10.36	106	400677	85.419	ug/l	100
69) o-Xylene	10.70	106	1847	0.401	ug/l	91
73) Isopropylbenzene	11.02	105	30479	2.601	ug/l	98
76) 1,2,3-Trichloropropane	11.14	75	87277	26.401	ug/l #	33
78) n-propylbenzene	11.37	91	29357	2.185	ug/l	100
79) 2-Chlorotoluene	11.44	91	16396	2.044	ug/l #	44
80) 1,3,5-Trimethylbenzene	11.51	105	41527	4.194	ug/l	99
81) trans-1,4-Dichloro-2-buten	11.14	75	87277	81.591	ug/l #	7
82) 4-Chlorotoluene	11.51	91	6599	0.697	ug/l #	59

Data Path : Z:\VOASRV\HPCHEM1\MSVOA X\DATA\VX061618\
 Data File : VX002655.D
 Acq On : 16 Jun 2018 18:59
 Operator : JC/MD
 Sample : J3467-05DL 20X
 Misc : 5.0mL/MSVOA X/WATER
 ALS Vial : 5 Sample Multiplier: 1

Instrument :
 MSVOA_X
 ClientSampleId :
 PR-MW-05-061118DL

Quant Time: Jun 18 01:39:15 2018
 Quant Method : Z:\VOASRV\HPCHEM1\MSVOA_X\METHOD\82X061518W.M
 Quant Title : SW846 8260
 QLast Update : Sat Jun 16 01:37:33 2018
 Response via : Initial Calibration

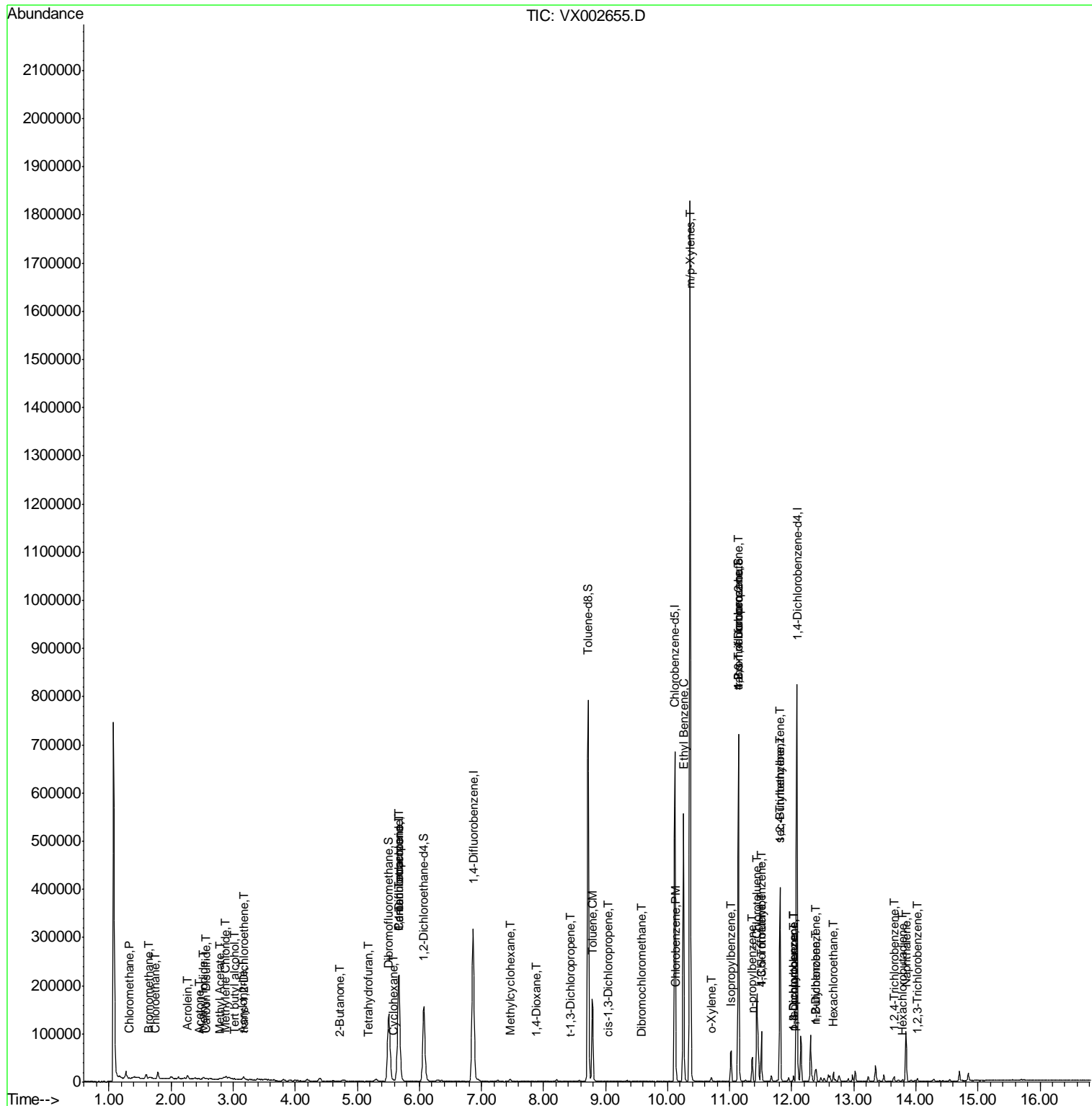
Internal Standards	R.T.	QIon	Response	Conc	Units	Dev(Min)
84) 1,2,4-Trimethylbenzene	11.81	105	164087	16.240	ug/l	98
85) sec-Butylbenzene	11.81	105	164087	13.834	ug/l #	56
86) p-Isopropyltoluene	12.03	119	2260	0.211	ug/l	90
87) 1,3-Dichlorobenzene	12.03	146	1475	0.246	ug/l	87
88) 1,4-Dichlorobenzene	12.03	146	1475	0.242	ug/l	87
89) n-Butylbenzene	12.39	91	4917	0.519	ug/l #	59
90) Hexachloroethane	12.67	117	914	3.142	ug/l #	1
91) 1,2-Dichlorobenzene	12.40	146	4573	0.759	ug/l	98
93) 1,2,4-Trichlorobenzene	13.65	180	2100	0.480	ug/l	87
94) Hexachlorobutadiene	13.79	225	692	0.300	ug/l	92
95) Naphthalene	13.84	128	65171	5.539	ug/l	99
96) 1,2,3-Trichlorobenzene	14.02	180	1540	0.351	ug/l #	92

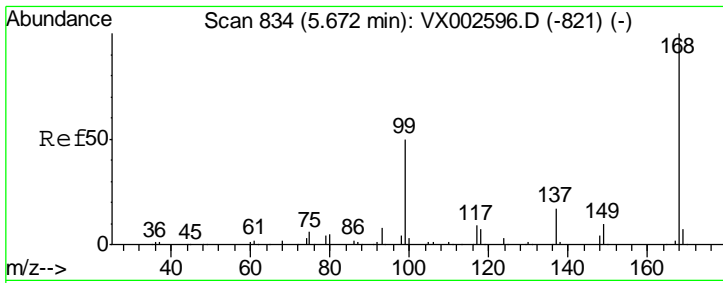
(#) = qualifier out of range (m) = manual integration (+) = signals summed

Data Path : Z:\VOASRV\HPCHEM1\MSVOA X\DATA\VX061618\
 Data File : VX002655.D
 Acq On : 16 Jun 2018 18:59
 Operator : JC/MD
 Sample : J3467-05DL 20X
 Misc : 5.0mL/MSVOA X/WATER
 ALS Vial : 5 Sample Multiplier: 1

Instrument :
 MSVOA_X
 ClientSampleId :
 PR-MW-05-061118DL

Quant Time: Jun 18 01:39:15 2018
 Quant Method : Z:\VOASRV\HPCHEM1\MSVOA_X\METHOD\82X061518W.M
 Quant Title : SW846 8260
 QLast Update : Sat Jun 16 01:37:33 2018
 Response via : Initial Calibration

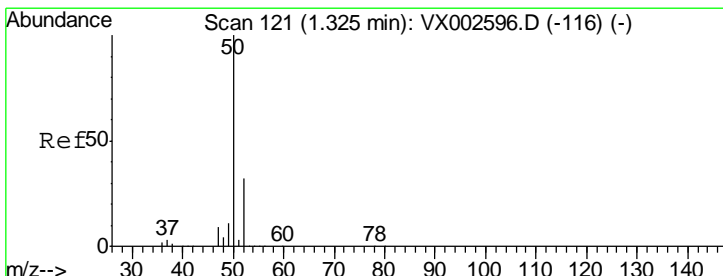
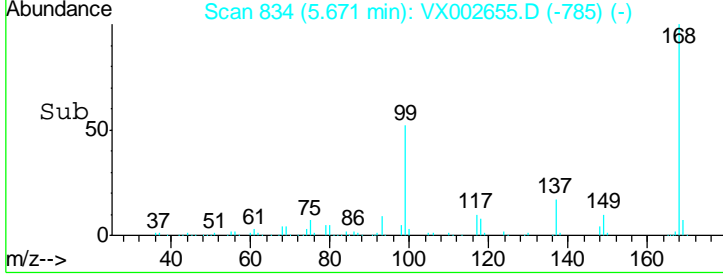
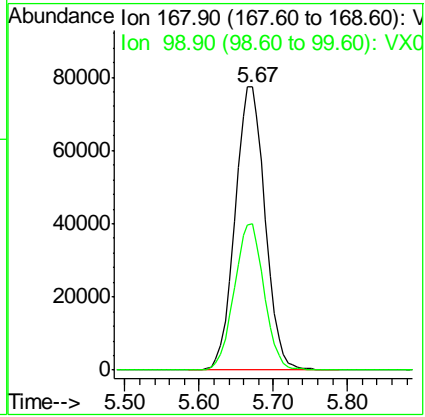
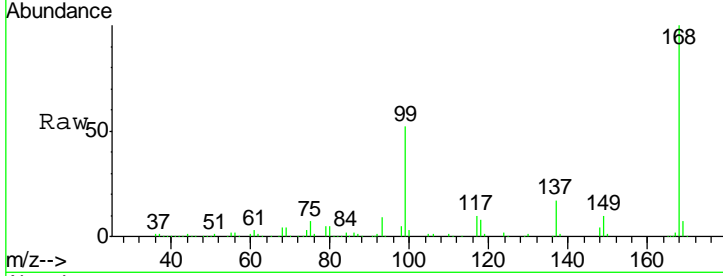




#1
 Pentafluorobenzene
 Concen: 50.000 ug/l
 RT: 5.67 min Scan# 834
 Delta R.T. -0.00 min
 Lab File: VX002655.D
 Acq: 16 Jun 2018 18:59

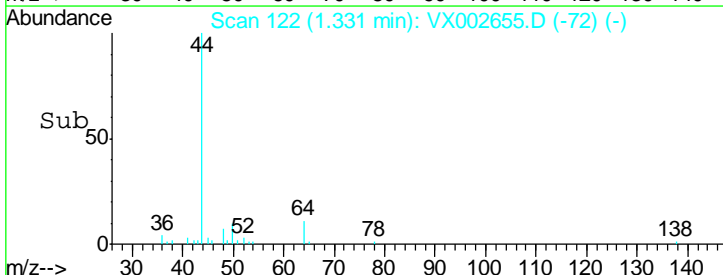
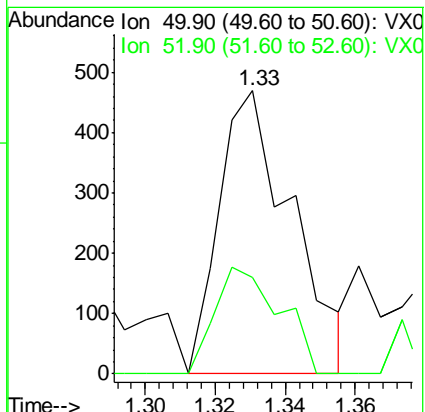
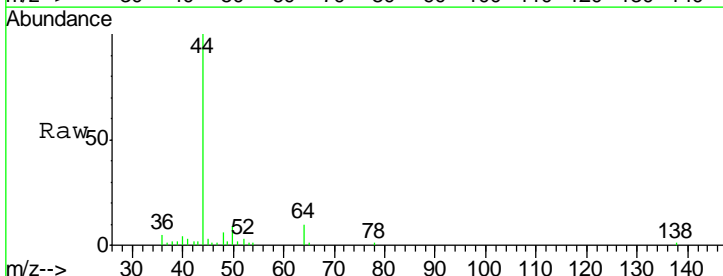
Instrument : MSVOA_X
 ClientSampled : PR-MW-05-061118DL

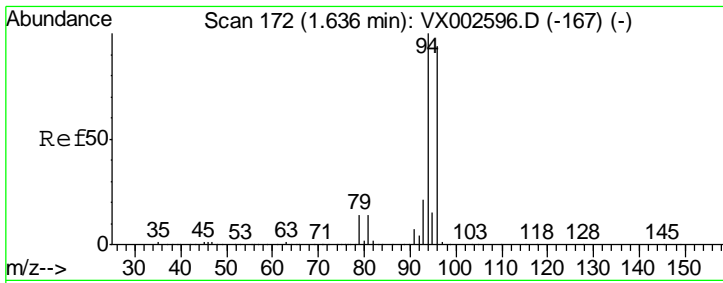
Tgt Ion	Resp	Lower	Upper
168	100		
99	51.7	39.3	58.9



#3
 Chloromethane
 Concen: 0.246 ug/l
 RT: 1.33 min Scan# 122
 Delta R.T. 0.01 min
 Lab File: VX002655.D
 Acq: 16 Jun 2018 18:59

Tgt Ion	Resp	Lower	Upper
50	100		
52	33.9	25.7	38.5

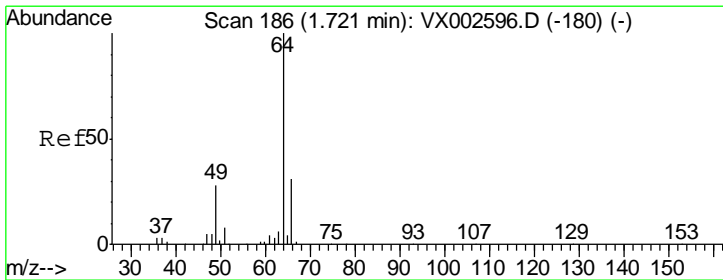
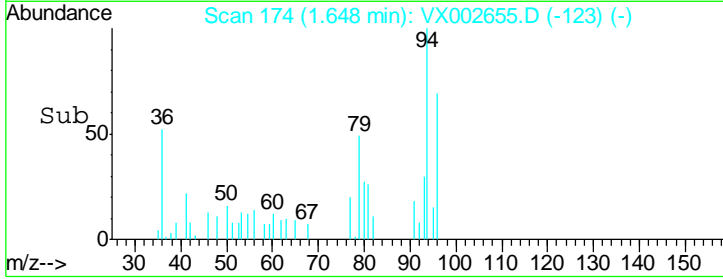
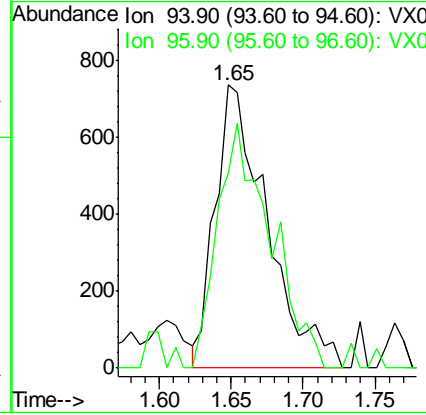
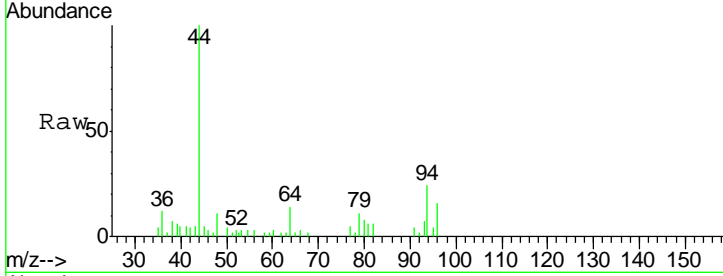




#5
 Bromomethane
 Concen: 1.067 ug/l
 RT: 1.65 min Scan# 174
 Delta R.T. 0.01 min
 Lab File: VX002655.D
 Acq: 16 Jun 2018 18:59

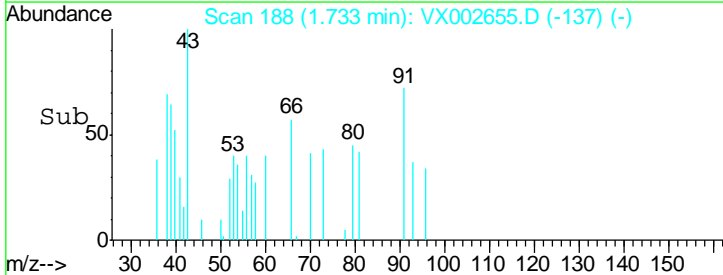
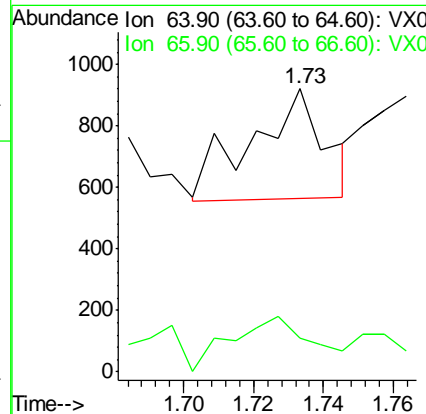
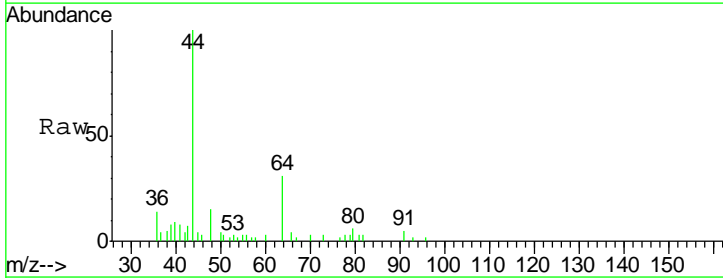
Instrument :
 MSVOA_X
ClientSampled :
 PR-MW-05-061118DL

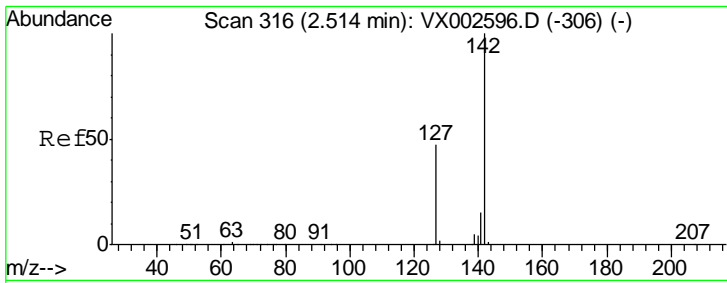
Tgt Ion: 94 Resp: 1847
 Ion Ratio Lower Upper
 94 100
 96 68.8 74.9 112.3#



#6
 Chloroethane
 Concen: 0.274 ug/l
 RT: 1.73 min Scan# 188
 Delta R.T. 0.01 min
 Lab File: VX002655.D
 Acq: 16 Jun 2018 18:59

Tgt Ion: 64 Resp: 519
 Ion Ratio Lower Upper
 64 100
 66 31.5 25.5 38.3

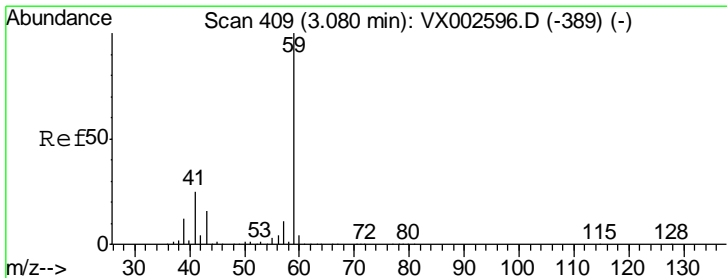
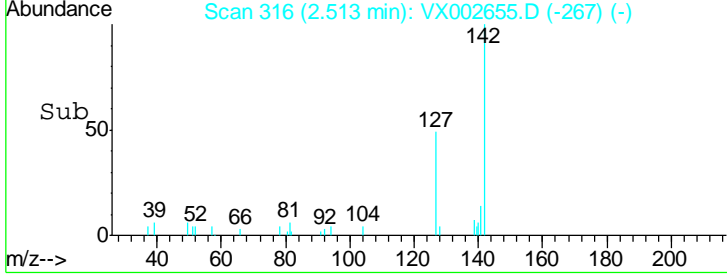
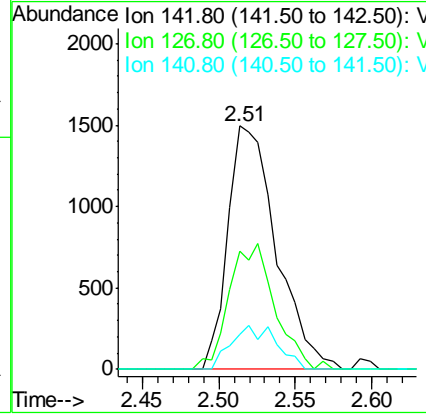
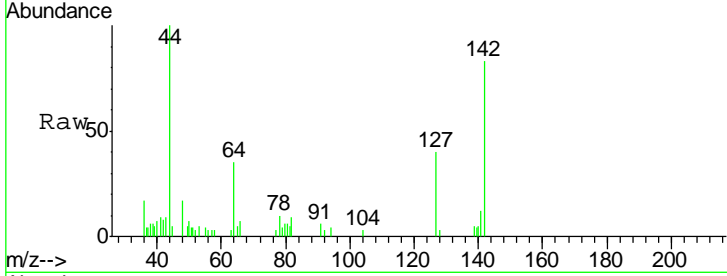




#10
Methyl Iodide
Concen: 6.020 ug/l
RT: 2.51 min Scan# 316
Delta R.T. 0.00 min
Lab File: VX002655.D
Acq: 16 Jun 2018 18:59

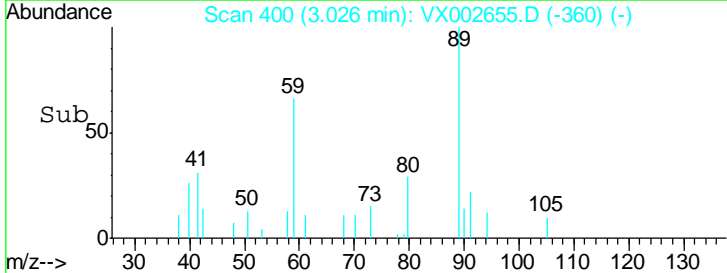
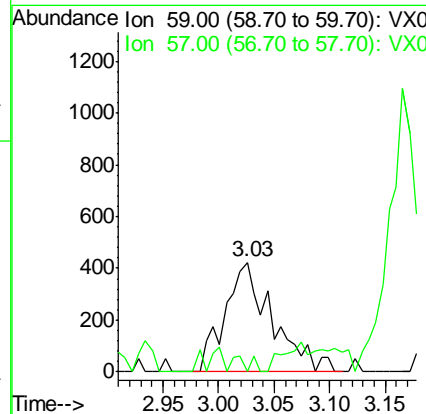
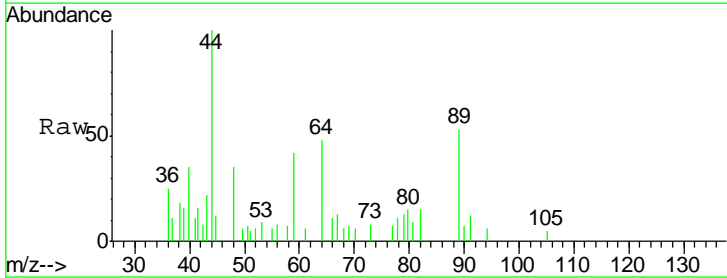
Instrument :
MSVOA_X
ClientSampled :
PR-MW-05-061118DL

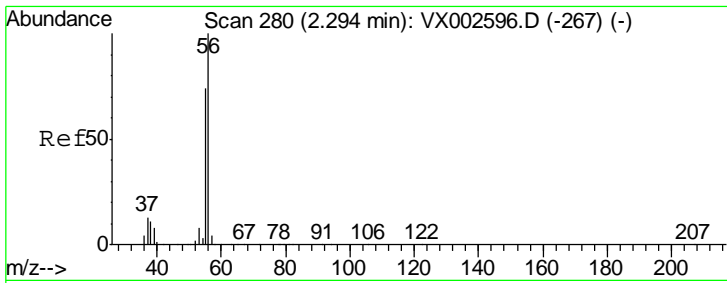
Tgt Ion	Resp	Lower	Upper
142	3292		
127	48.5	36.6	55.0
141	16.7	11.3	16.9



#11
Tert butyl alcohol
Concen: 1.824 ug/l
RT: 3.03 min Scan# 400
Delta R.T. -0.05 min
Lab File: VX002655.D
Acq: 16 Jun 2018 18:59

Tgt Ion	Resp	Lower	Upper
59	1255		
57	0.0	8.2	12.2#

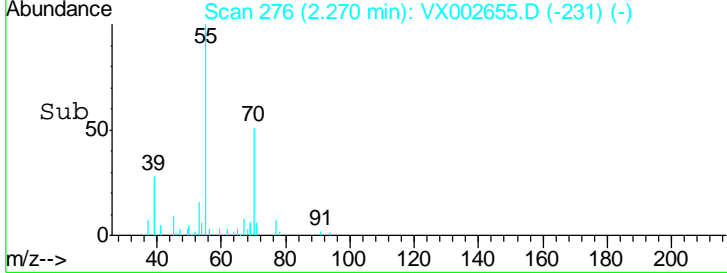
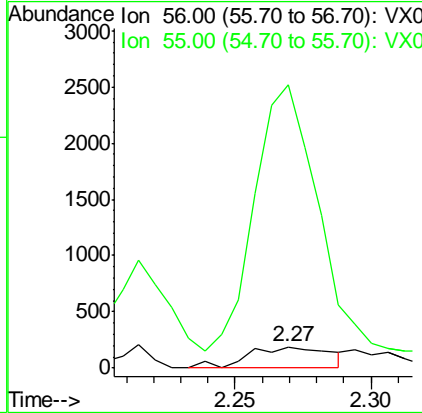
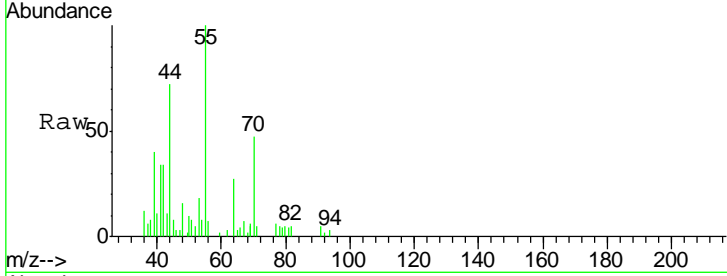




#13
 Acrolein
 Concen: 8.048 ug/l
 RT: 2.27 min Scan# 276
 Delta R.T. -0.02 min
 Lab File: VX002655.D
 Acq: 16 Jun 2018 18:59

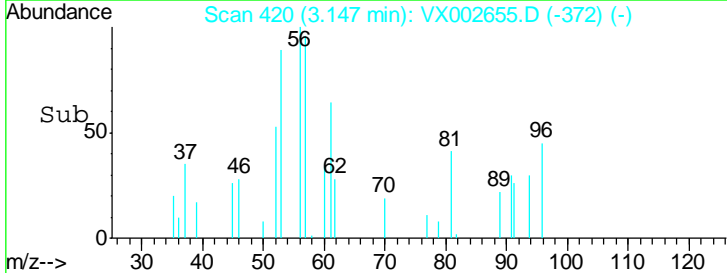
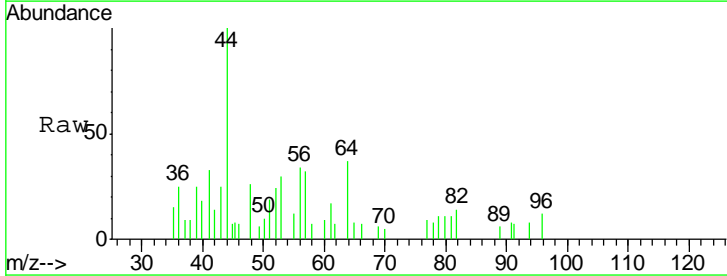
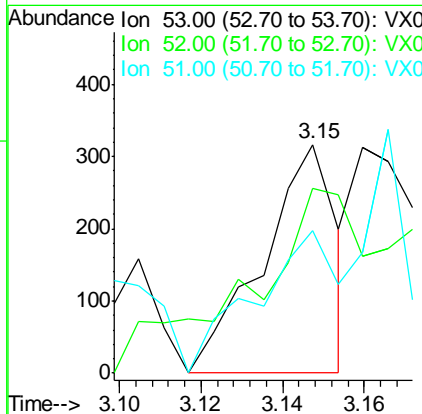
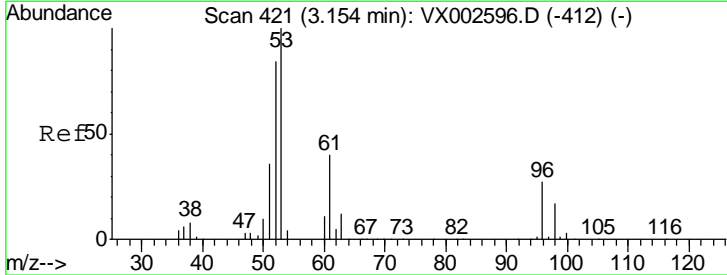
Instrument : MSVOA_X
 ClientSampled : PR-MW-05-061118DL

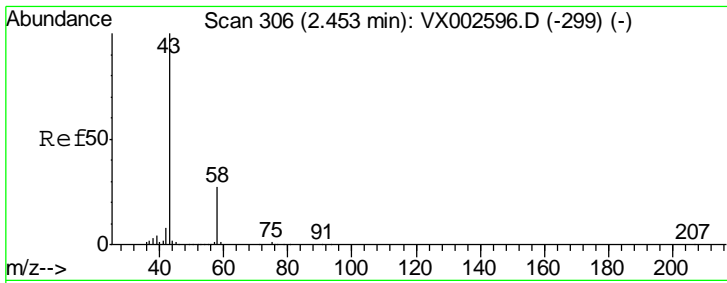
Tgt Ion: 56 Resp: 393
 Ion Ratio Lower Upper
 56 100
 55 1042.2 57.0 85.4#



#15
 Acrylonitrile
 Concen: 0.264 ug/l
 RT: 3.15 min Scan# 420
 Delta R.T. -0.01 min
 Lab File: VX002655.D
 Acq: 16 Jun 2018 18:59

Tgt Ion: 53 Resp: 397
 Ion Ratio Lower Upper
 53 100
 52 139.0 66.7 100.1#
 51 148.4 29.9 44.9#

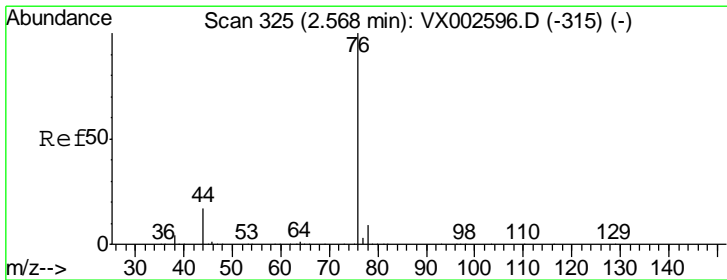
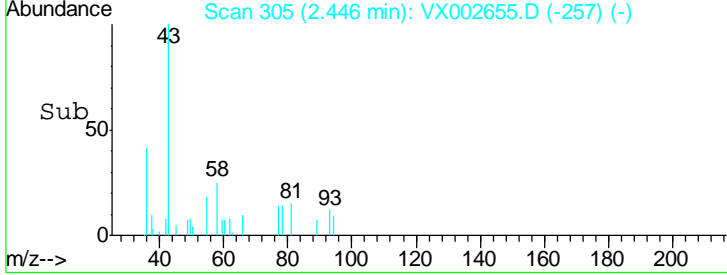
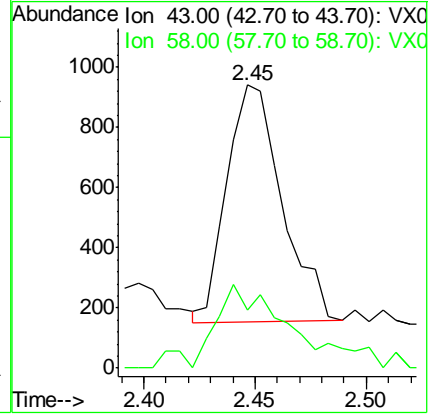
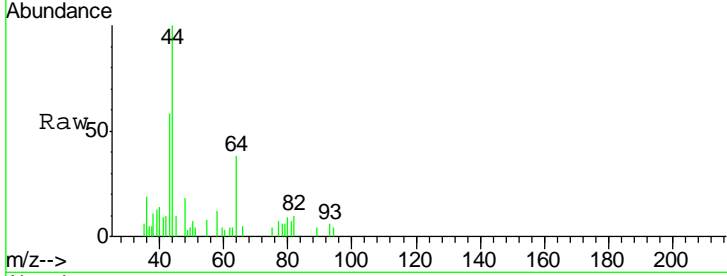




#16
 Acetone
 Concen: 0.928 ug/l
 RT: 2.45 min Scan# 305
 Delta R.T. -0.01 min
 Lab File: VX002655.D
 Acq: 16 Jun 2018 18:59

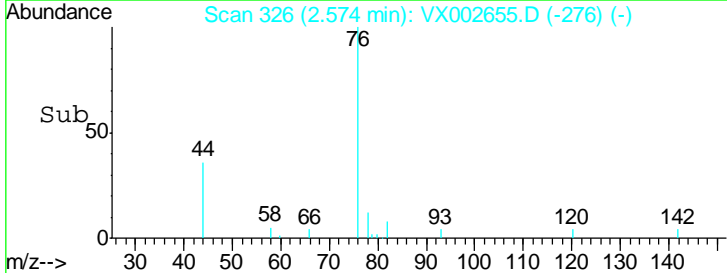
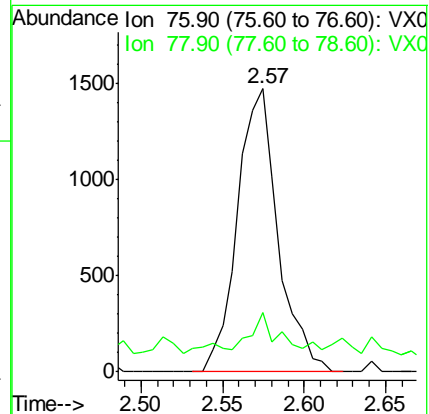
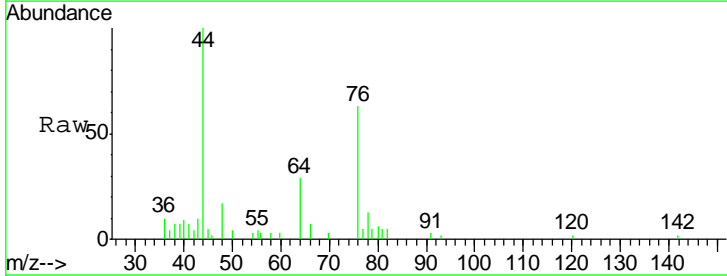
Tgt Ion	Resp	Lower	Upper
43	1362		
58	24.6	22.1	33.1

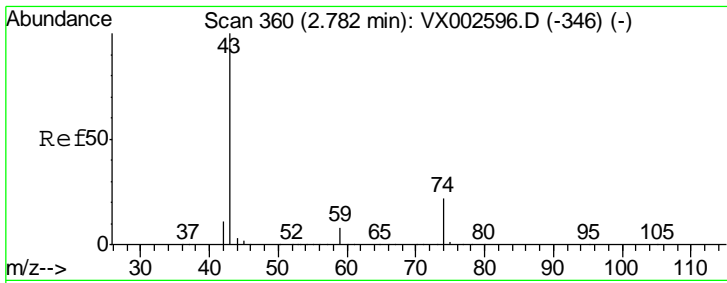
Instrument : MSVOA_X
 ClientSampled : PR-MW-05-061118DL



#17
 Carbon Disulfide
 Concen: 0.441 ug/l
 RT: 2.57 min Scan# 326
 Delta R.T. 0.01 min
 Lab File: VX002655.D
 Acq: 16 Jun 2018 18:59

Tgt Ion	Resp	Lower	Upper
76	2558		
78	12.6	6.9	10.3#

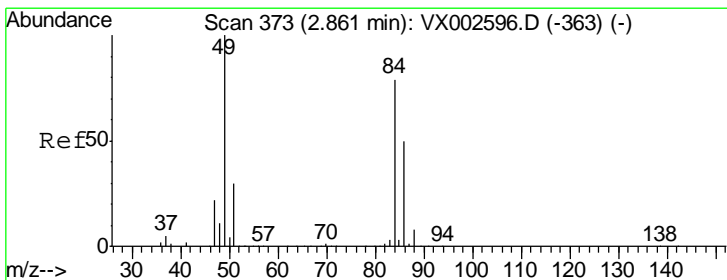
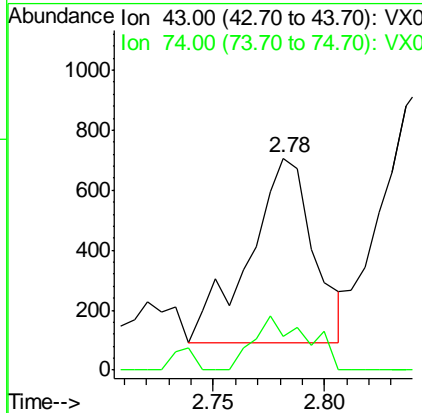
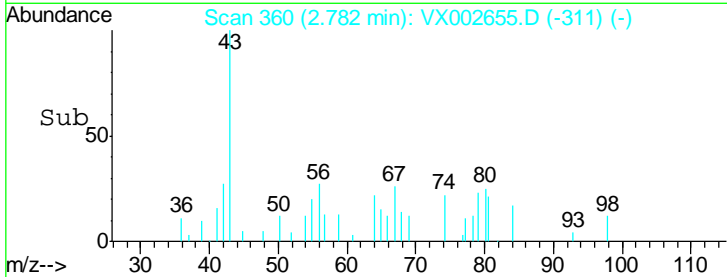
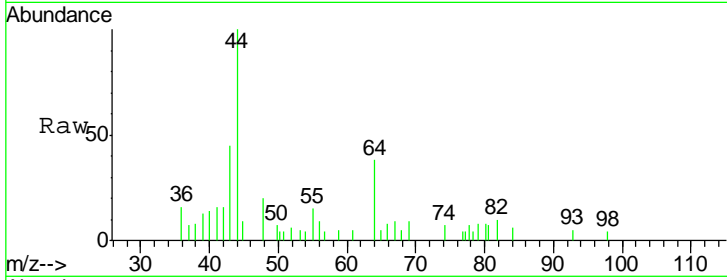




#18
Methyl Acetate
Concen: 0.318 ug/l
RT: 2.78 min Scan# 360
Delta R.T. -0.00 min
Lab File: VX002655.D
Acq: 16 Jun 2018 18:59

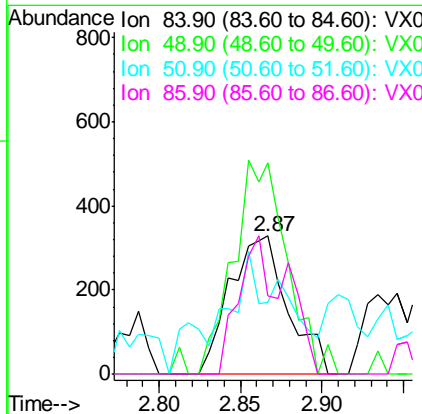
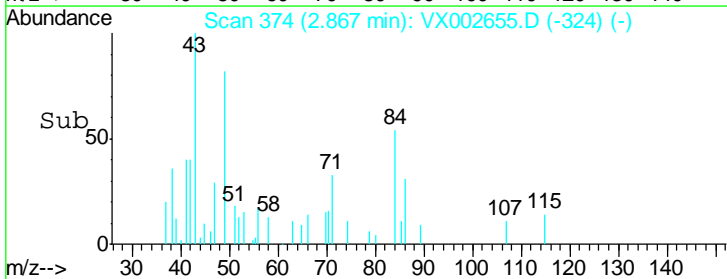
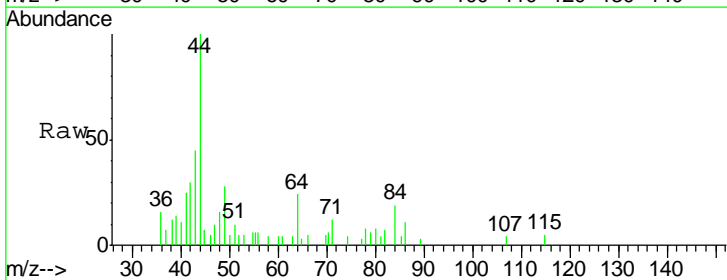
Instrument :
MSVOA_X
ClientSampled :
PR-MW-05-061118DL

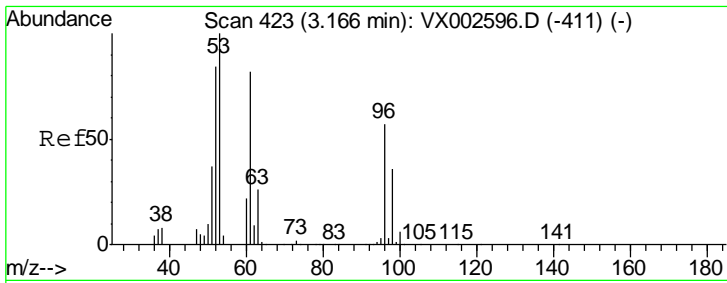
Tgt Ion	Resp	Lower	Upper
43	1244		
74	24.4	16.7	25.1



#20
Methylene Chloride
Concen: 0.270 ug/l
RT: 2.87 min Scan# 374
Delta R.T. 0.01 min
Lab File: VX002655.D
Acq: 16 Jun 2018 18:59

Tgt Ion	Resp	Lower	Upper
84	812		
49	153.0	107.8	161.6
51	14.6	32.8	49.2#
86	57.0	52.5	78.7

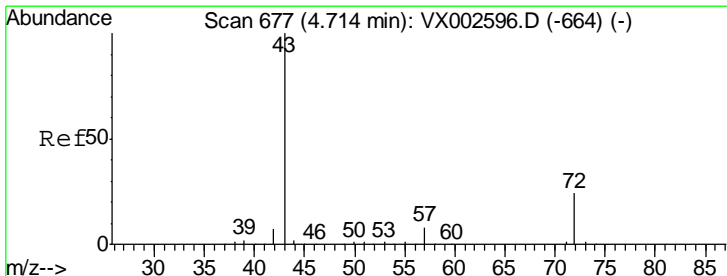
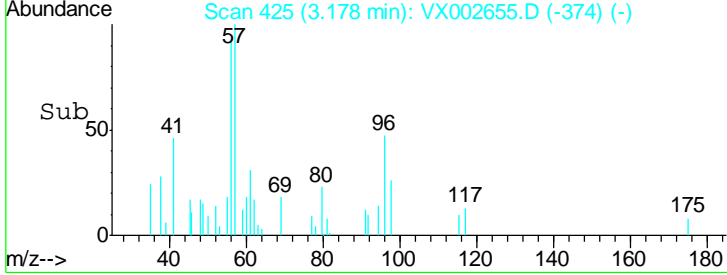
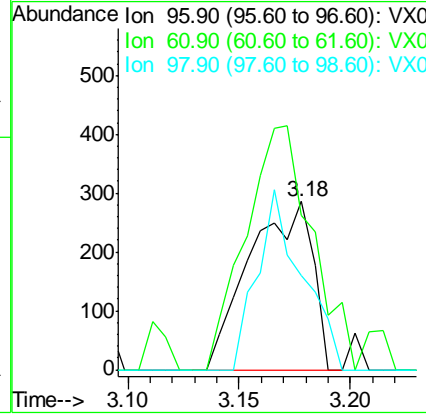
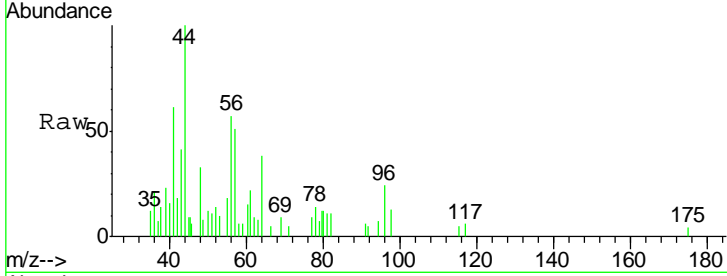




#21
 trans-1,2-Dichloroethene
 Concen: 0.212 ug/l
 RT: 3.18 min Scan# 425
 Delta R.T. 0.01 min
 Lab File: VX002655.D
 Acq: 16 Jun 2018 18:59

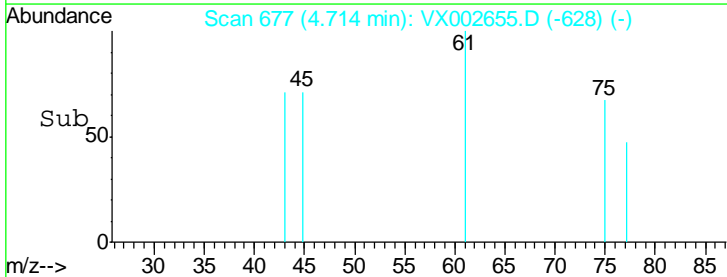
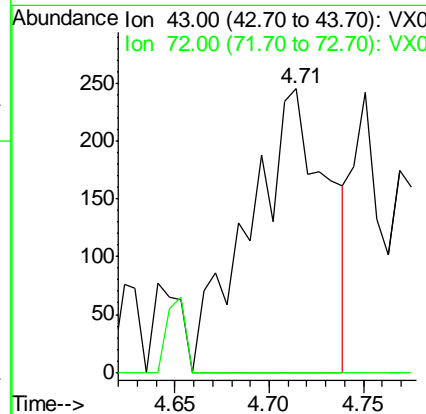
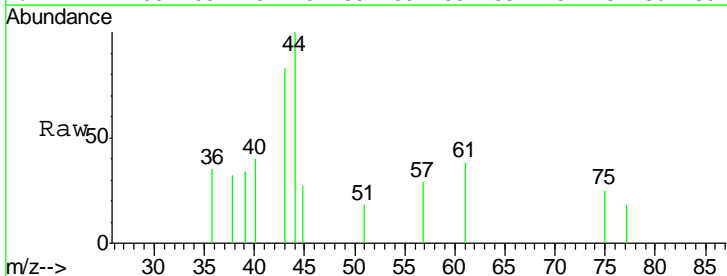
Instrument :
 MSVOA_X
ClientSampled :
 PR-MW-05-061118DL

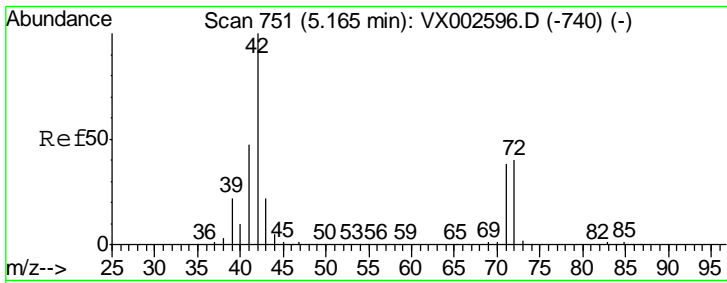
Tgt Ion	Resp	Lower	Upper
96	563		
61	92.0	117.0	175.4#
98	55.9	52.4	78.6



#25
 2-Butanone
 Concen: 0.365 ug/l
 RT: 4.71 min Scan# 677
 Delta R.T. -0.00 min
 Lab File: VX002655.D
 Acq: 16 Jun 2018 18:59

Tgt Ion	Resp	Lower	Upper
43	704		
43	100		
72	0.0	18.5	27.7#

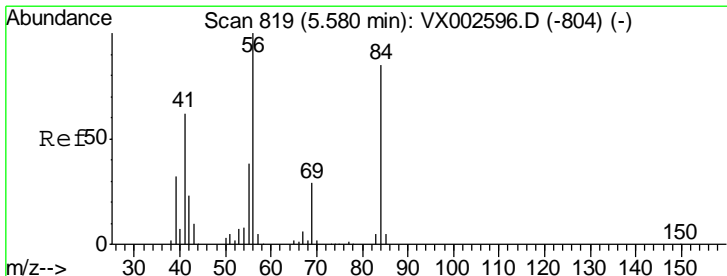
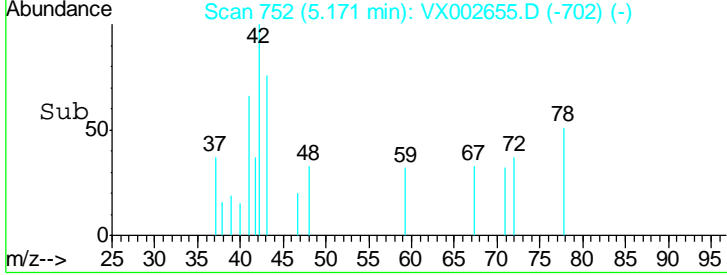
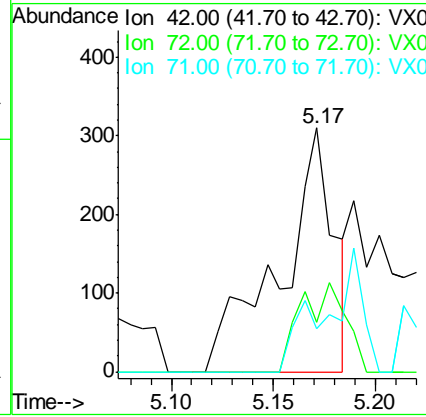
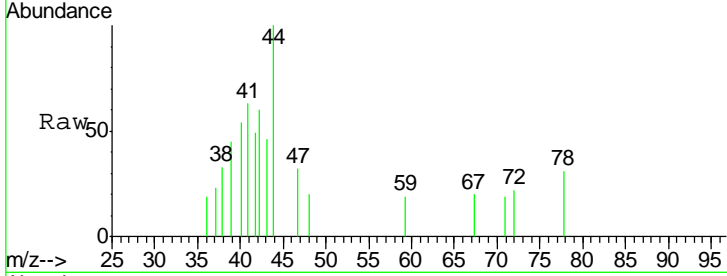




#29
 Tetrahydrofuran
 Concen: 0.449 ug/l
 RT: 5.17 min Scan# 752
 Delta R.T. 0.01 min
 Lab File: VX002655.D
 Acq: 16 Jun 2018 18:59

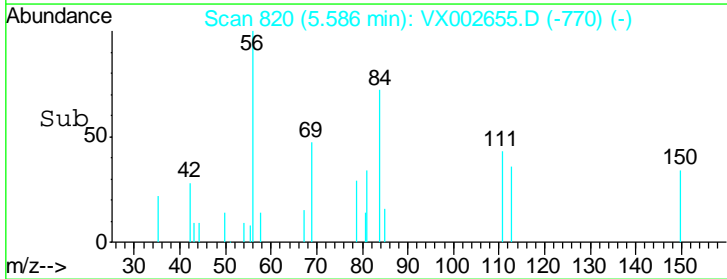
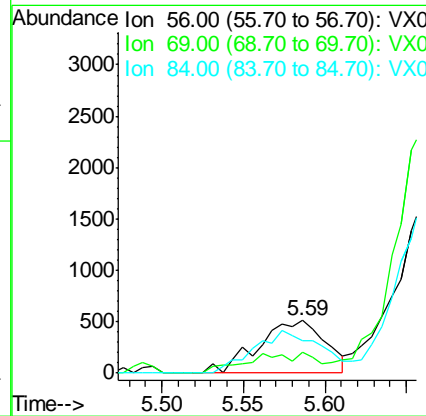
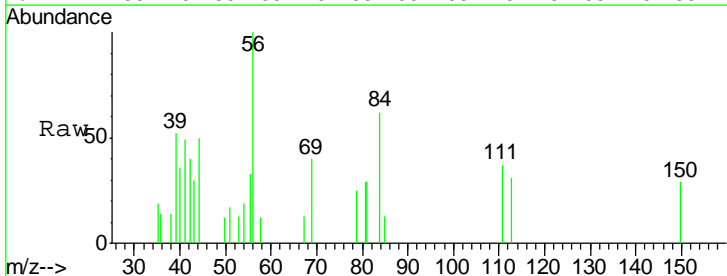
Instrument :
 MSVOA_X
ClientSampled :
 PR-MW-05-061118DL

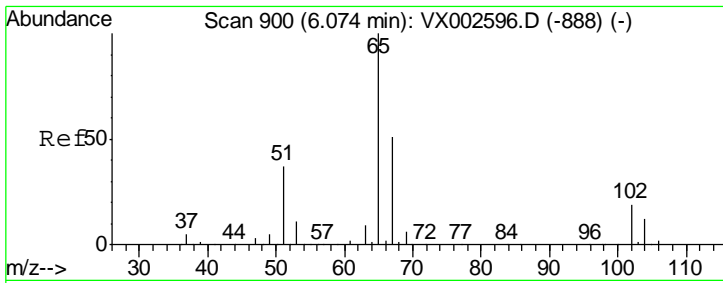
Tgt Ion	Resp	Lower	Upper
42	100		
72	30.5	32.0	48.0#
71	12.9	30.1	45.1#



#31
 Cyclohexane
 Concen: 0.369 ug/l
 RT: 5.59 min Scan# 820
 Delta R.T. 0.01 min
 Lab File: VX002655.D
 Acq: 16 Jun 2018 18:59

Tgt Ion	Resp	Lower	Upper
56	100		
69	40.4	23.7	35.5#
84	62.4	64.1	96.1#

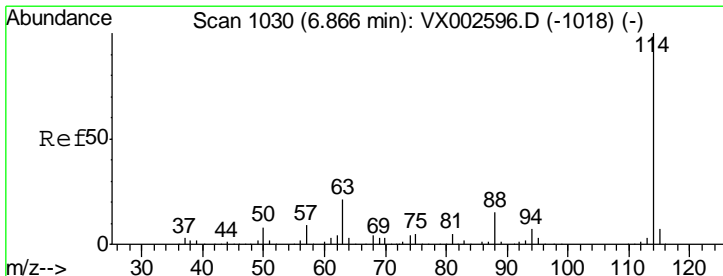
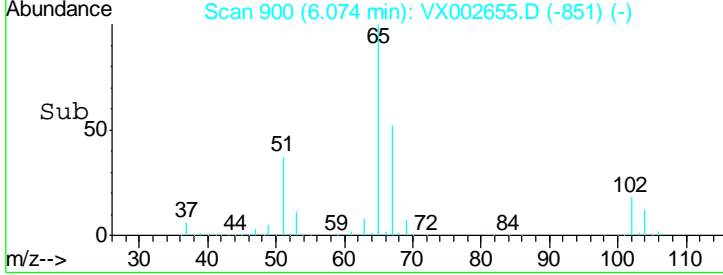
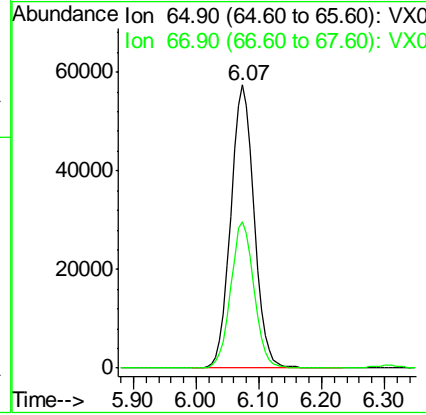
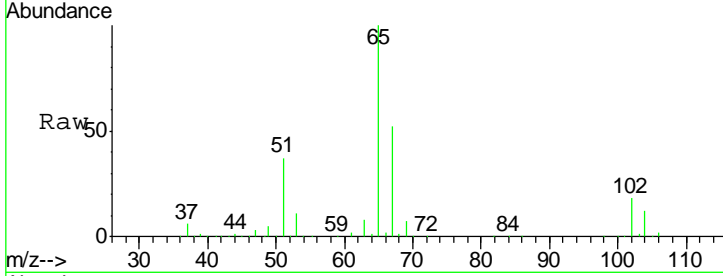




#33
 1,2-Dichloroethane-d4
 Concen: 44.497 ug/l
 RT: 6.07 min Scan# 900
 Delta R.T. 0.00 min
 Lab File: VX002655.D
 Acq: 16 Jun 2018 18:59

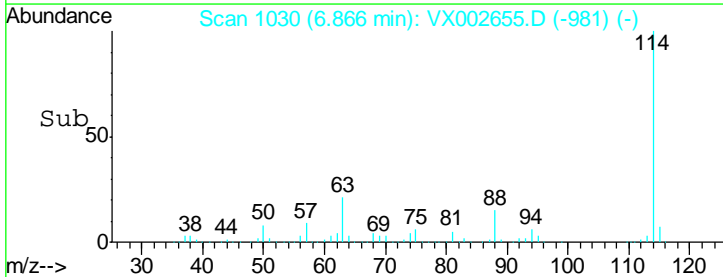
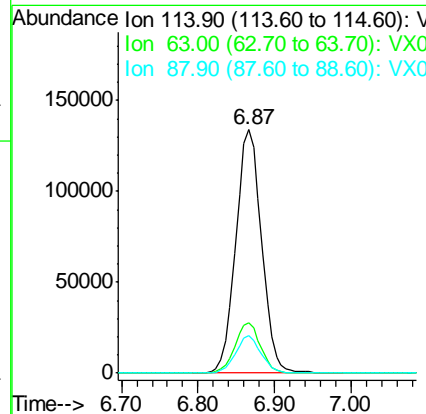
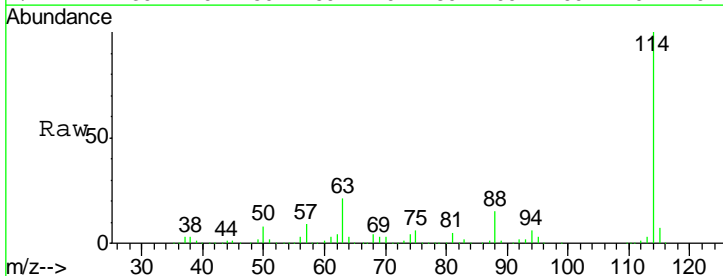
Instrument :
 MSVOA_X
 ClientSampled :
 PR-MW-05-061118DL

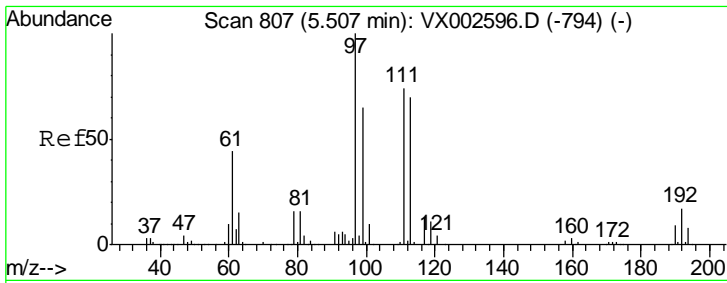
Tgt Ion: 65 Resp: 148103
 Ion Ratio Lower Upper
 65 100
 67 51.3 0.0 102.6



#34
 1,4-Difluorobenzene
 Concen: 50.000 ug/l
 RT: 6.87 min Scan# 1030
 Delta R.T. -0.00 min
 Lab File: VX002655.D
 Acq: 16 Jun 2018 18:59

Tgt Ion: 114 Resp: 312823
 Ion Ratio Lower Upper
 114 100
 63 20.7 0.0 41.4
 88 15.2 0.0 30.0

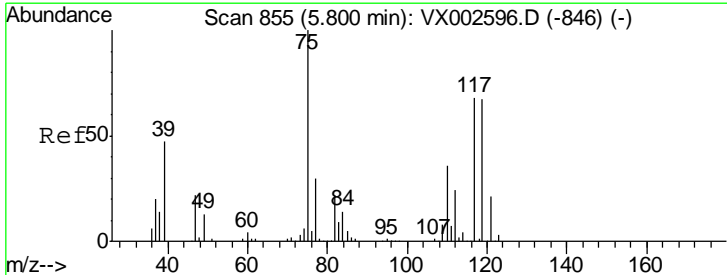
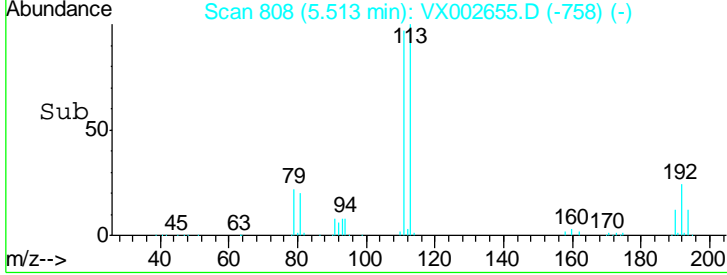
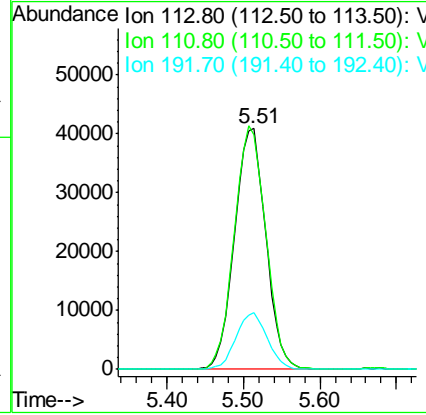
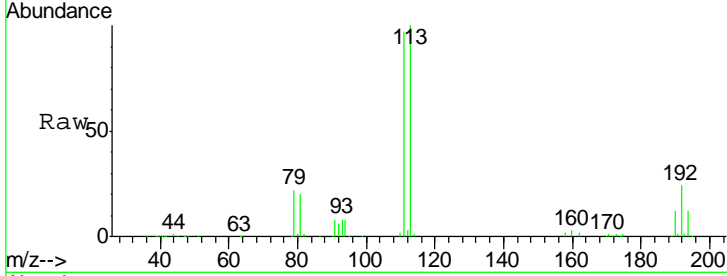




#35
 Dibromofluoromethane
 Concen: 46.598 ug/l
 RT: 5.51 min Scan# 808
 Delta R.T. 0.01 min
 Lab File: VX002655.D
 Acq: 16 Jun 2018 18:59

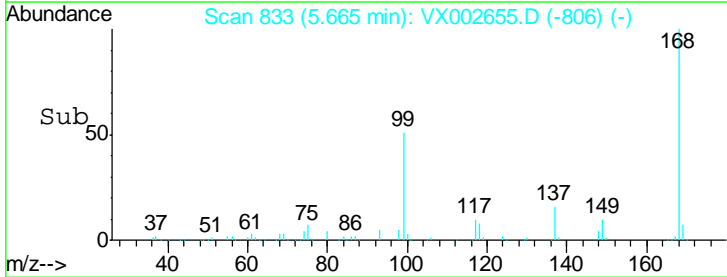
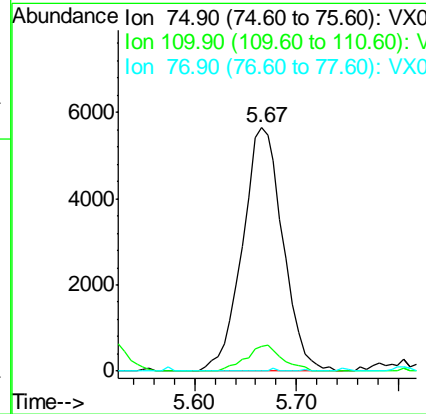
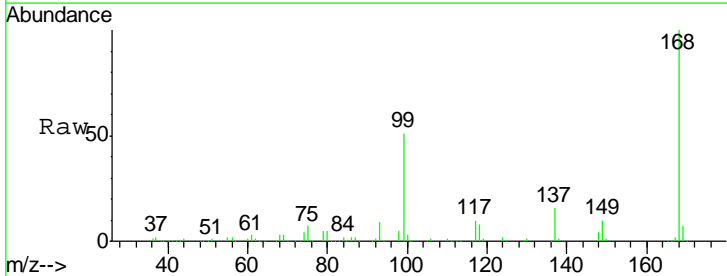
Instrument : MSVOA_X
 ClientSampled : PR-MW-05-061118DL

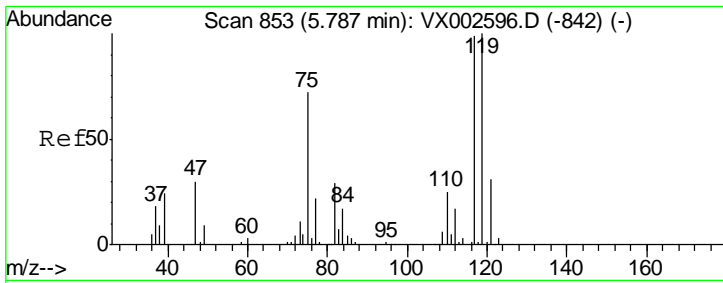
Tgt Ion	Resp	Lower	Upper
113	116339		
111	101.6	81.4	122.0
192	23.5	19.1	28.7



#36
 1,1-Dichloropropene
 Concen: 4.668 ug/l
 RT: 5.67 min Scan# 833
 Delta R.T. -0.13 min
 Lab File: VX002655.D
 Acq: 16 Jun 2018 18:59

Tgt Ion	Resp	Lower	Upper
75	15510		
110	9.7	18.1	54.4#
77	0.2	24.3	36.5#

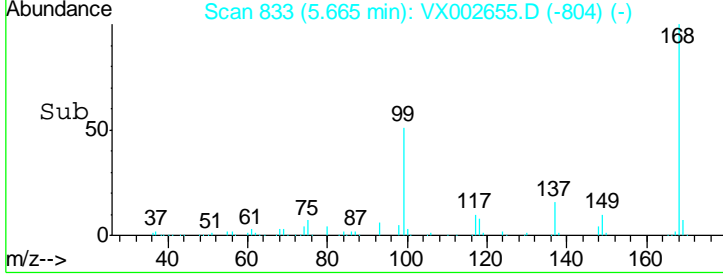
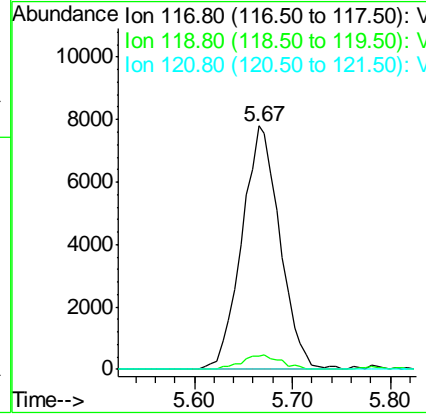
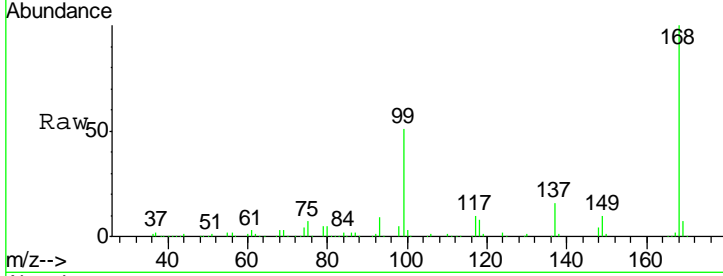




#38
 Carbon Tetrachloride
 Concen: 6.352 ug/l
 RT: 5.67 min Scan# 833
 Delta R.T. -0.12 min
 Lab File: VX002655.D
 Acq: 16 Jun 2018 18:59

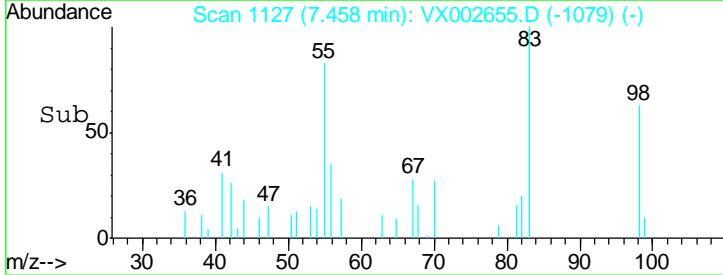
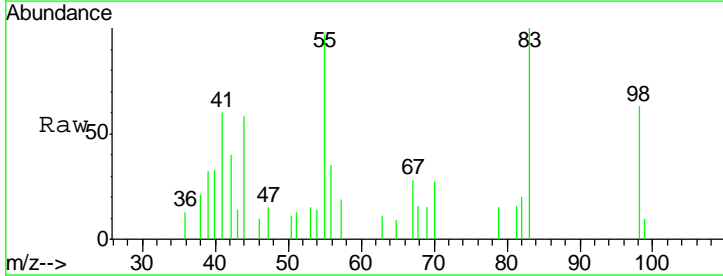
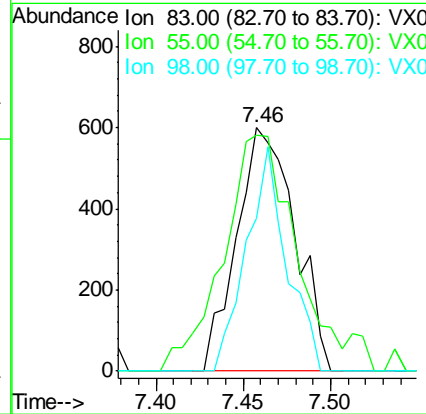
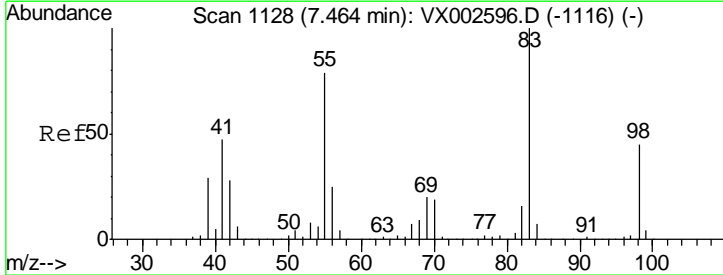
Instrument :
 MSVOA_X
ClientSampled :
 PR-MW-05-061118DL

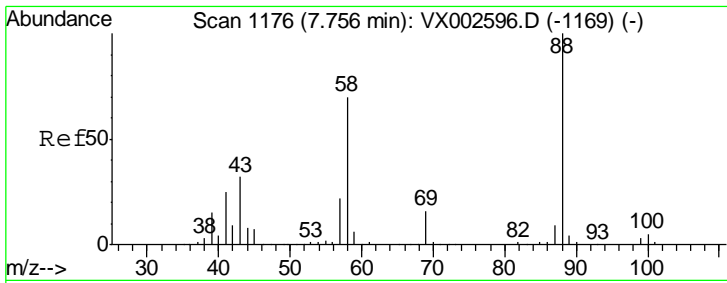
Tgt Ion	Resp	Lower	Upper
117	100		
119	5.5	77.4	116.0#
121	0.0	24.4	36.6#



#39
 Methylcyclohexane
 Concen: 0.359 ug/l
 RT: 7.46 min Scan# 1127
 Delta R.T. -0.01 min
 Lab File: VX002655.D
 Acq: 16 Jun 2018 18:59

Tgt Ion	Resp	Lower	Upper
83	100		
55	87.7	65.4	98.0
98	62.7	37.4	56.0#

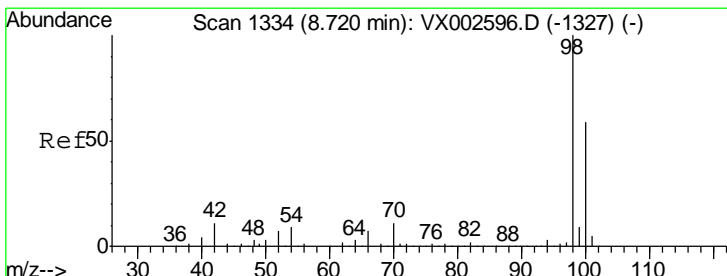
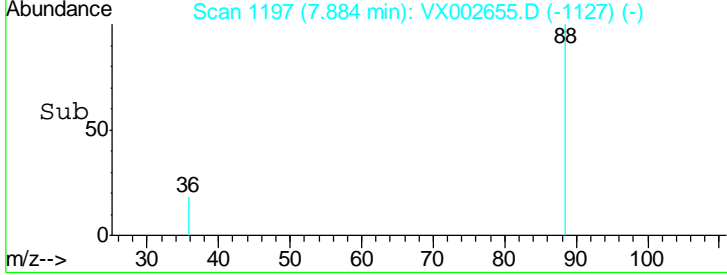
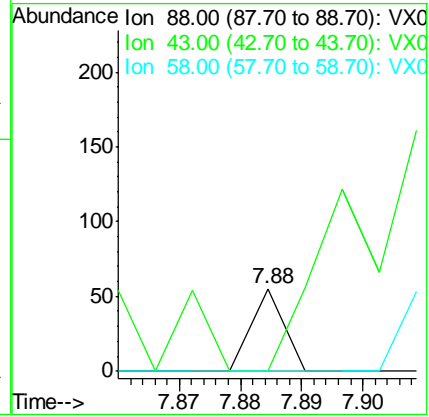
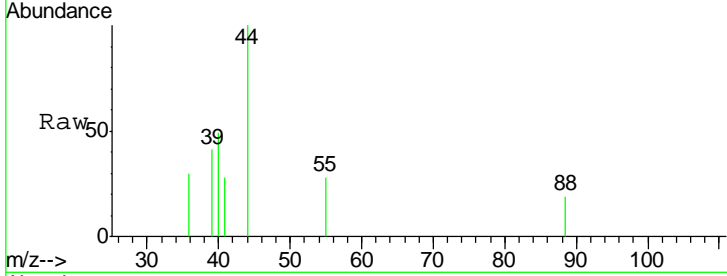




#49
 1,4-Dioxane
 Concen: 0.332 ug/l
 RT: 7.88 min Scan# 1197
 Delta R.T. 0.13 min
 Lab File: VX002655.D
 Acq: 16 Jun 2018 18:59

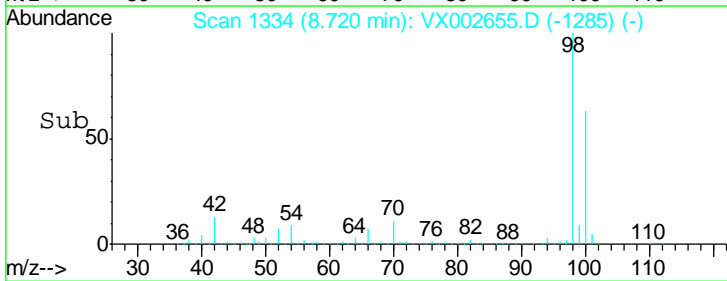
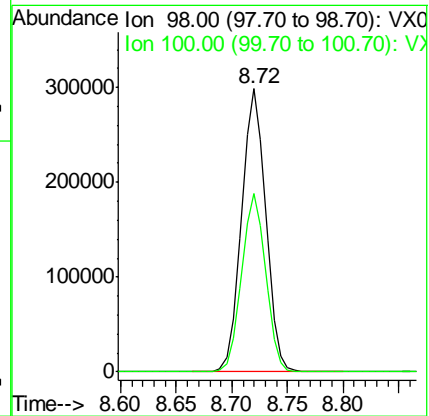
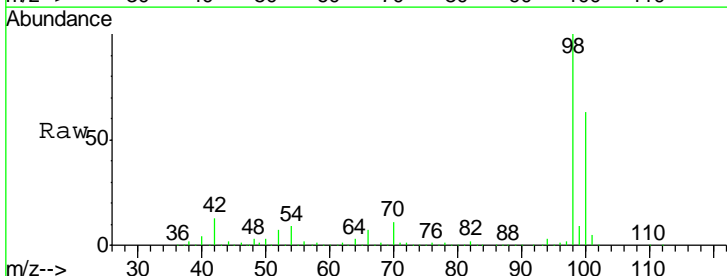
Instrument : MSVOA_X
 ClientSampled : PR-MW-05-061118DL

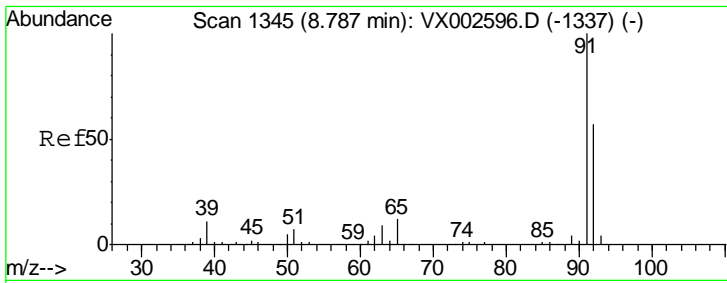
Tgt Ion	Resp	Lower	Upper
88	100		
43	0.0	29.8	44.6#
58	0.0	57.1	85.7#



#50
 Toluene-d8
 Concen: 47.409 ug/l
 RT: 8.72 min Scan# 1334
 Delta R.T. 0.00 min
 Lab File: VX002655.D
 Acq: 16 Jun 2018 18:59

Tgt Ion	Resp	Lower	Upper
98	100		
100	62.6	50.9	76.3

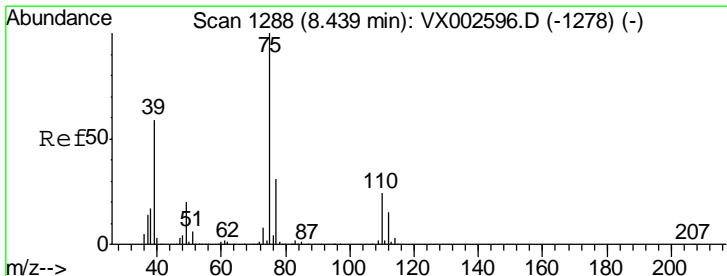
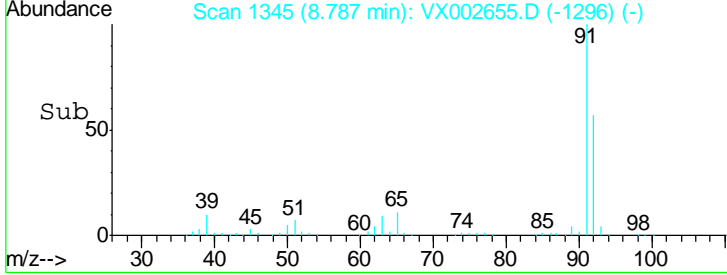
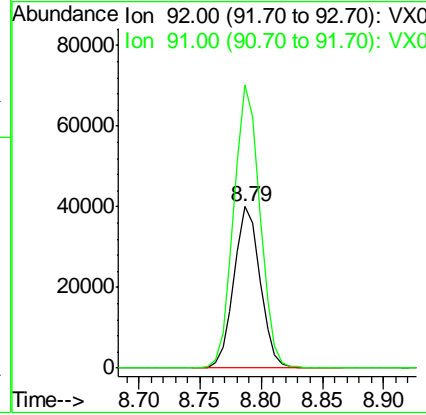
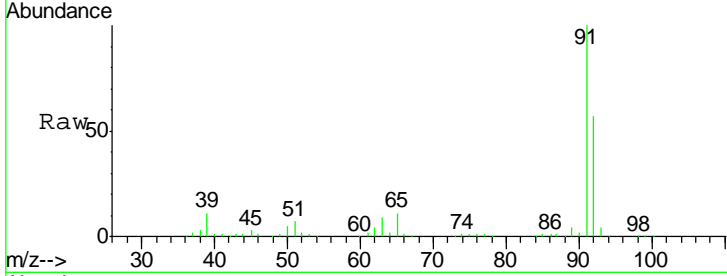




#52
 Toluene
 Concen: 9.327 ug/l
 RT: 8.79 min Scan# 1345
 Delta R.T. -0.00 min
 Lab File: VX002655.D
 Acq: 16 Jun 2018 18:59

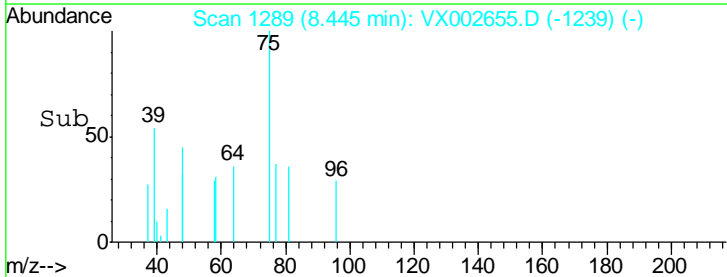
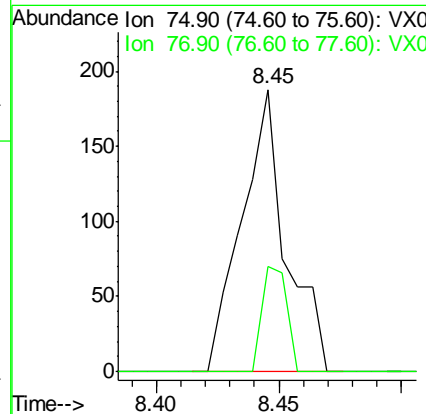
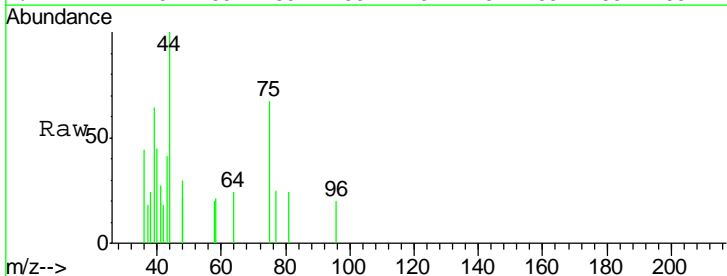
Instrument : MSVOA_X
 ClientSampled : PR-MW-05-061118DL

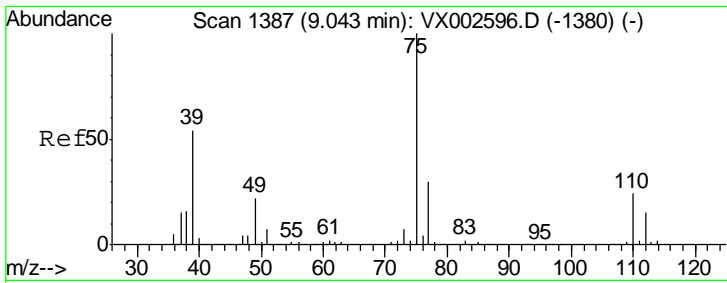
Tot Ion: 92 Resp: 59269
 Ion Ratio Lower Upper
 92 100
 91 176.0 140.4 210.6



#53
 t-1,3-Dichloropropene
 Concen: 2.448 ug/l
 RT: 8.45 min Scan# 1289
 Delta R.T. 0.01 min
 Lab File: VX002655.D
 Acq: 16 Jun 2018 18:59

Tgt Ion: 75 Resp: 236
 Ion Ratio Lower Upper
 75 100
 77 37.2 25.4 38.2

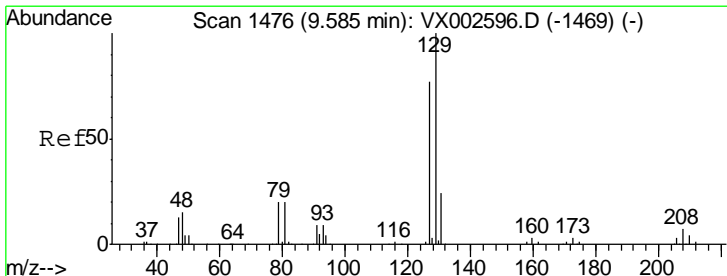
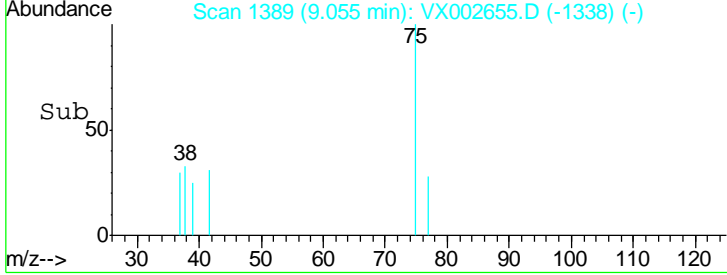
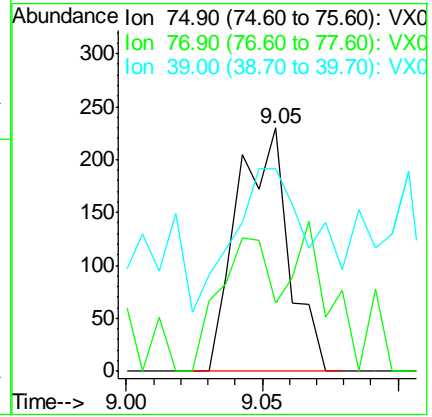
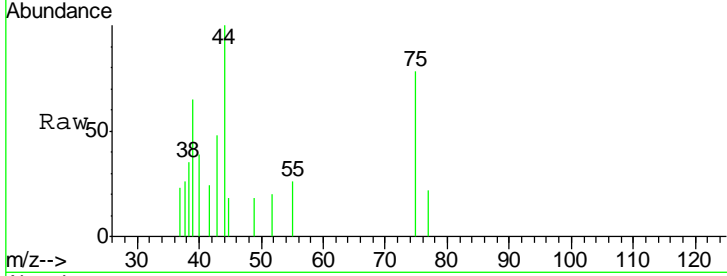




#54
 cis-1,3-Dichloropropene
 Concen: 3.285 ug/l
 RT: 9.05 min Scan# 1389
 Delta R.T. 0.01 min
 Lab File: VX002655.D
 Acq: 16 Jun 2018 18:59

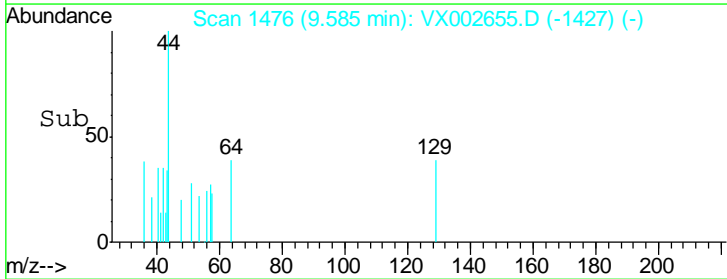
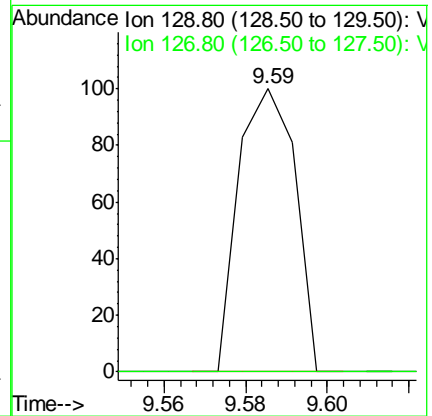
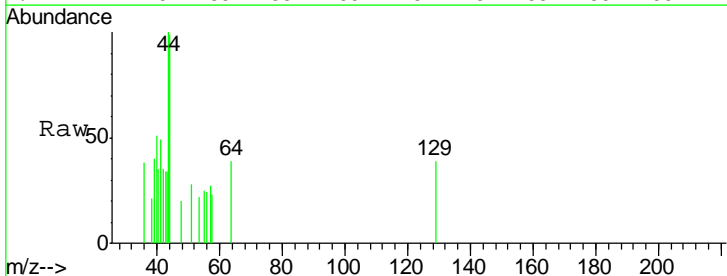
Instrument : MSVOA_X
 ClientSampleID : PR-MW-05-061118DL

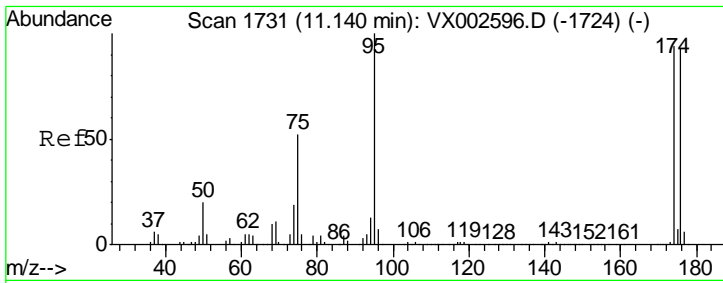
Tgt Ion	Resp	Lower	Upper
75	301		
77	28.3	24.8	37.2
39	58.7	42.4	63.6



#60
 Dibromochloromethane
 Concen: 3.792 ug/l
 RT: 9.59 min Scan# 1476
 Delta R.T. 0.00 min
 Lab File: VX002655.D
 Acq: 16 Jun 2018 18:59

Tgt Ion	Resp	Lower	Upper
129	97		
129	100		
127	0.0	38.5	115.3#

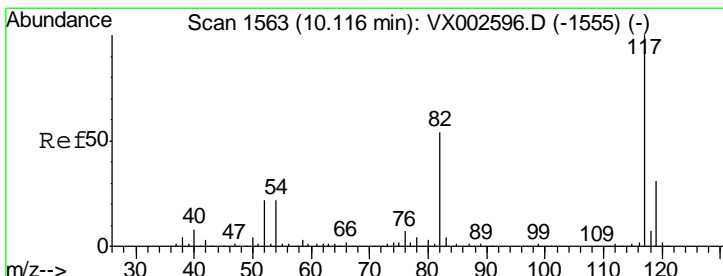
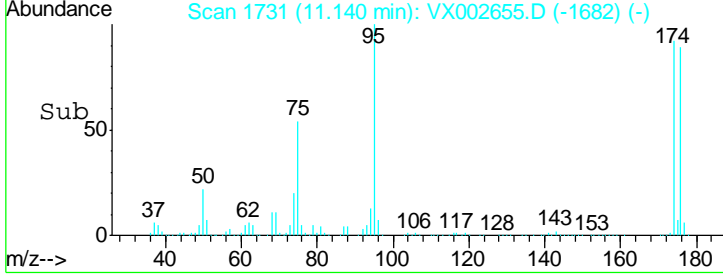
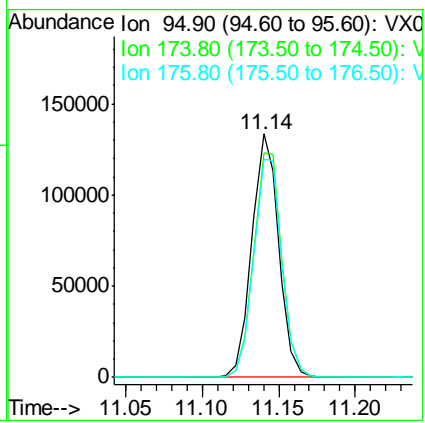
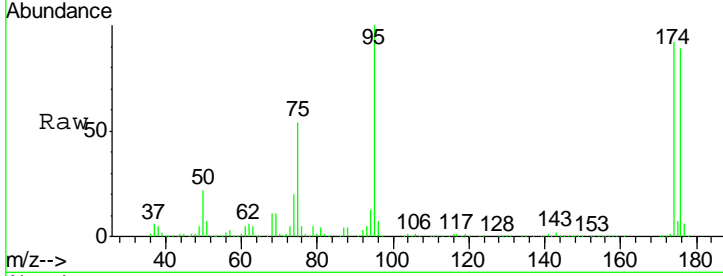




#62
 4-Bromofluorobenzene
 Concen: 45.333 ug/l
 RT: 11.14 min Scan# 1731
 Delta R.T. -0.00 min
 Lab File: VX002655.D
 Acq: 16 Jun 2018 18:59

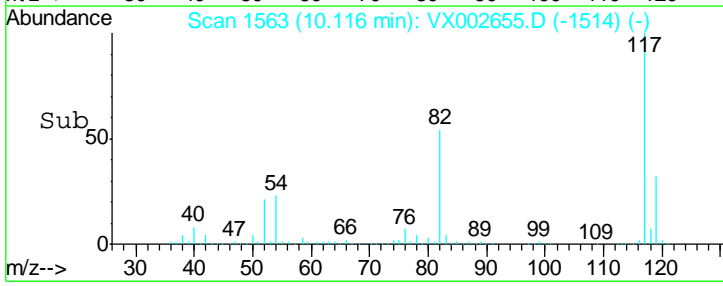
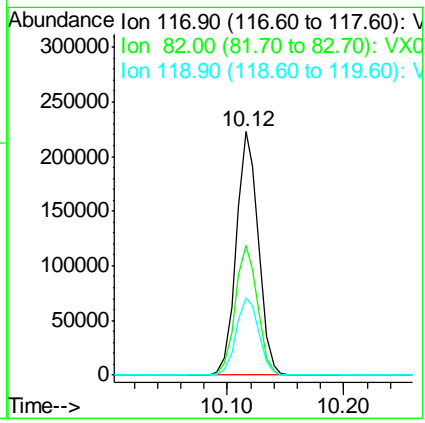
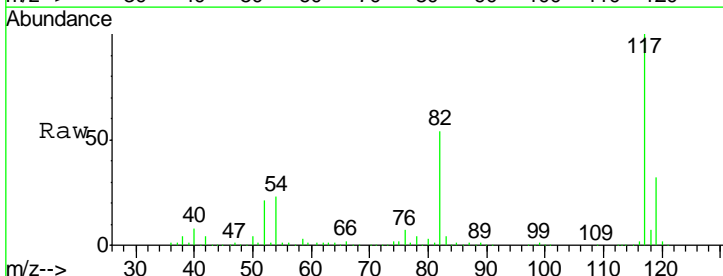
Instrument : MSVOA_X
 ClientSampled : PR-MW-05-061118DL

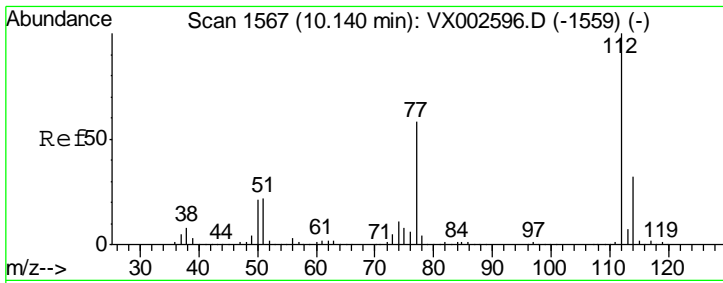
Tgt Ion	Resp	Lower	Upper
95	162844		
174	97.2	0.0	187.4
176	94.1	0.0	181.0



#63
 Chlorobenzene-d5
 Concen: 50.000 ug/l
 RT: 10.12 min Scan# 1563
 Delta R.T. -0.00 min
 Lab File: VX002655.D
 Acq: 16 Jun 2018 18:59

Tgt Ion	Resp	Lower	Upper
117	293563		
82	53.5	45.0	67.4
119	32.0	25.8	38.6

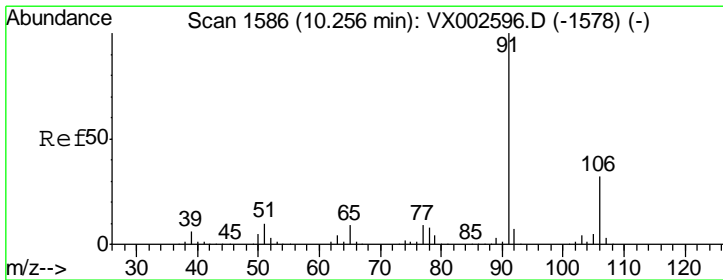
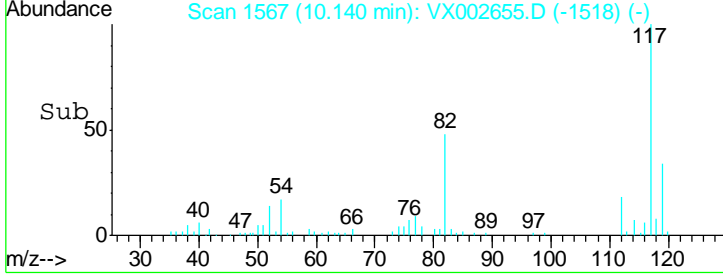
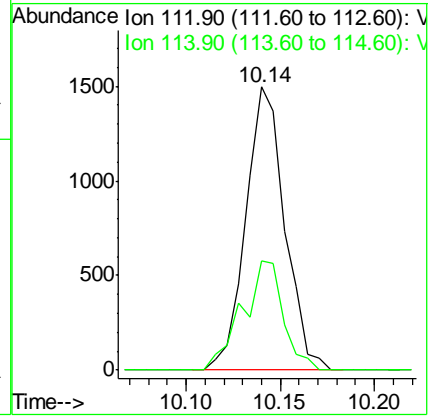
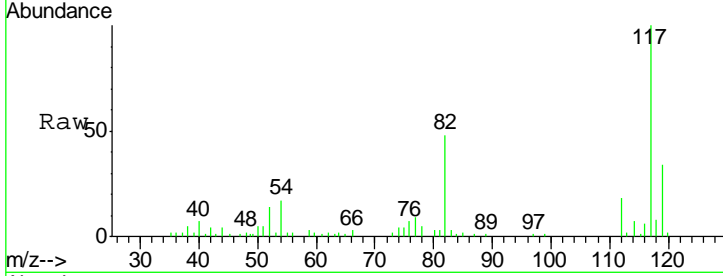




#65
 Chlorobenzene
 Concen: 0.298 ug/l
 RT: 10.14 min Scan# 1567
 Delta R.T. -0.00 min
 Lab File: VX002655.D
 Acq: 16 Jun 2018 18:59

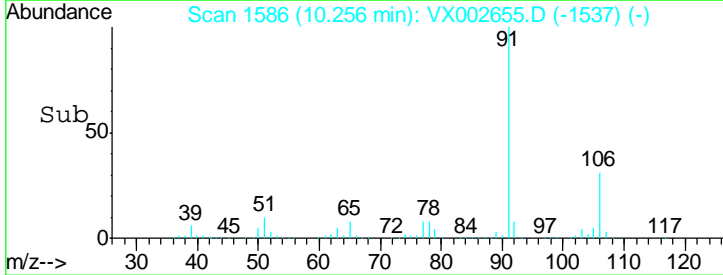
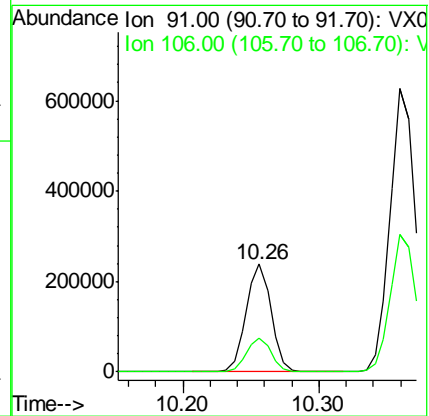
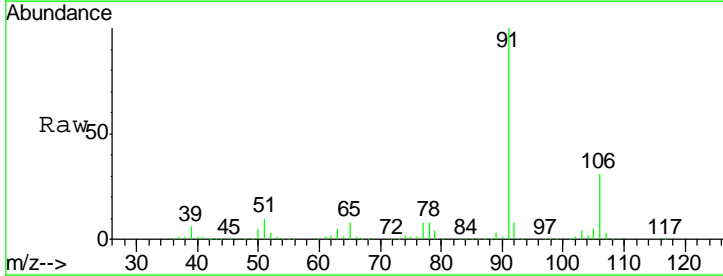
Instrument : MSVOA_X
 ClientSampled : PR-MW-05-061118DL

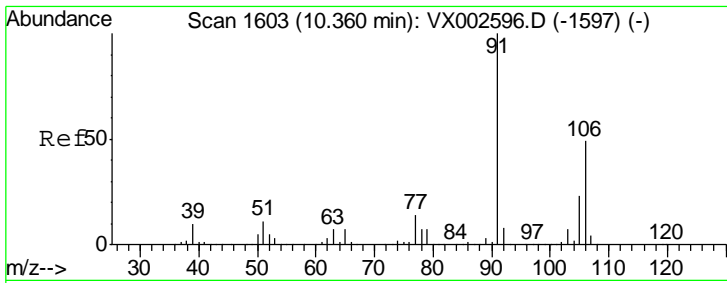
Tgt Ion	Resp	Lower	Upper
112	100		
114	38.6	25.3	37.9#



#67
 Ethyl Benzene
 Concen: 25.207 ug/l
 RT: 10.26 min Scan# 1586
 Delta R.T. -0.00 min
 Lab File: VX002655.D
 Acq: 16 Jun 2018 18:59

Tgt Ion	Resp	Lower	Upper
91	100		
106	31.0	25.5	38.3

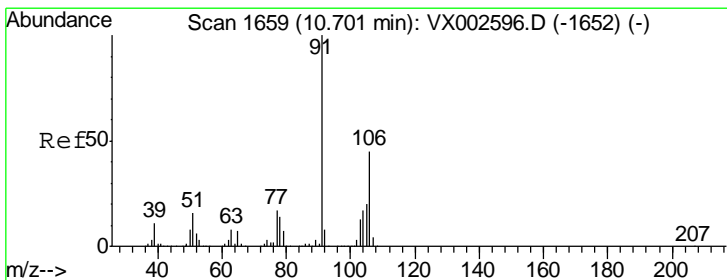
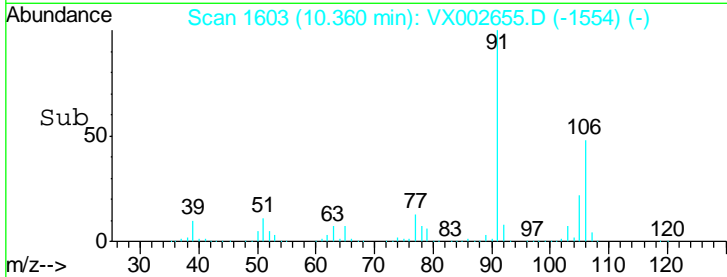
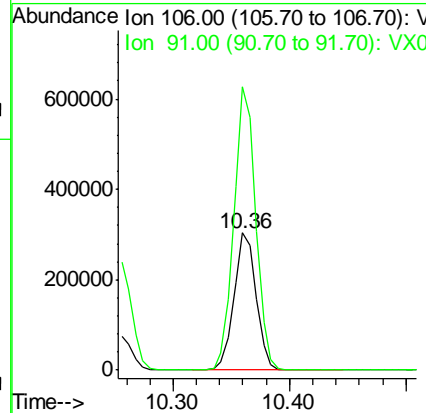
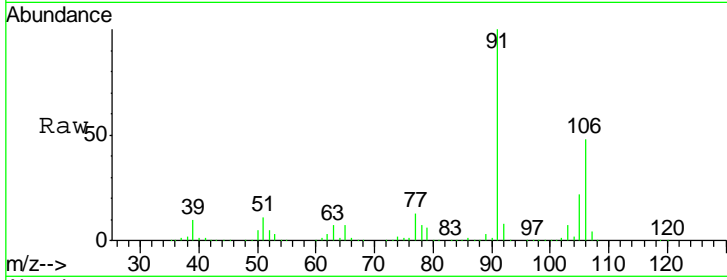




#68
 m/p-Xylenes
 Concen: 85.419 ug/l
 RT: 10.36 min Scan# 1603
 Delta R.T. -0.00 min
 Lab File: VX002655.D
 Acq: 16 Jun 2018 18:59

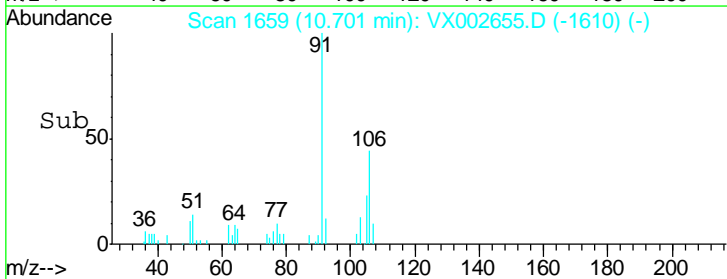
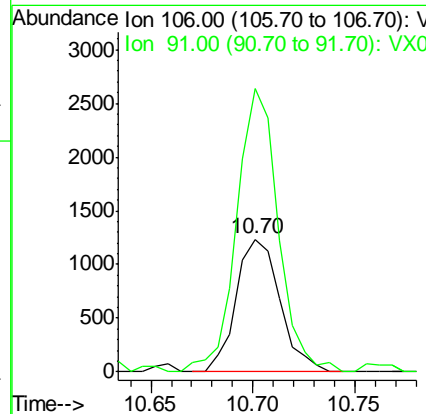
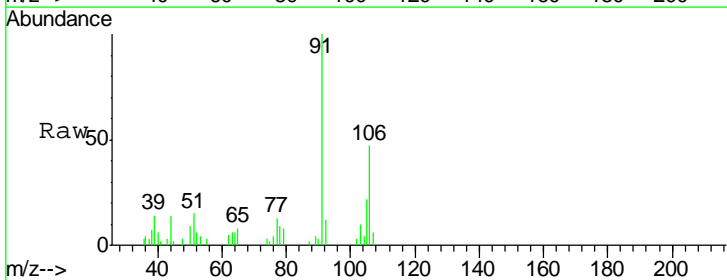
Instrument :
 MSVOA_X
 ClientSampled :
 PR-MW-05-061118DL

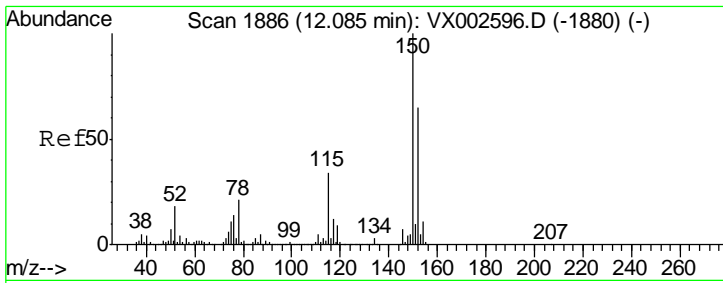
Tgt Ion:106 Resp: 400677
 Ion Ratio Lower Upper
 106 100
 91 204.2 163.4 245.2



#69
 o-Xylene
 Concen: 0.401 ug/l
 RT: 10.70 min Scan# 1659
 Delta R.T. -0.00 min
 Lab File: VX002655.D
 Acq: 16 Jun 2018 18:59

Tgt Ion:106 Resp: 1847
 Ion Ratio Lower Upper
 106 100
 91 201.7 108.2 324.6

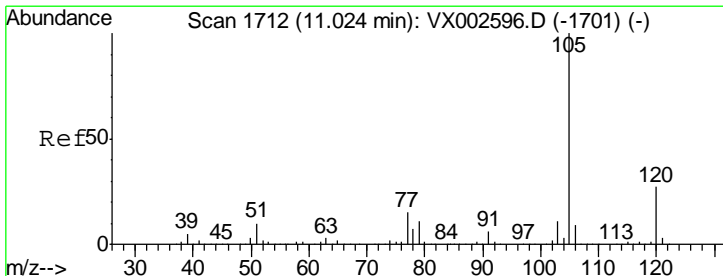
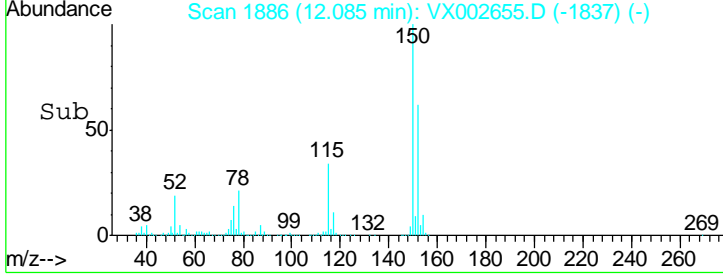
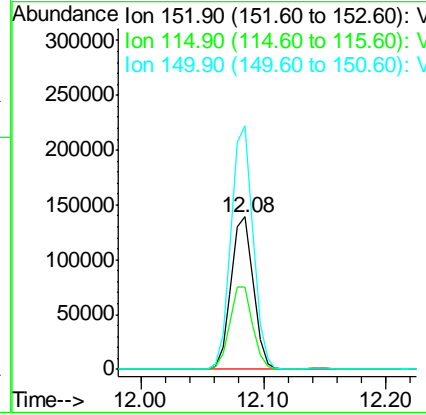
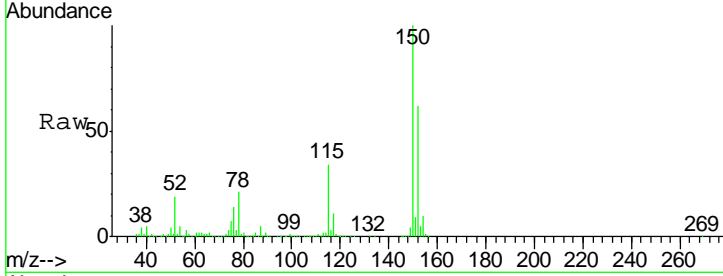




#72
 1,4-Dichlorobenzene-d4
 Concen: 50.000 ug/l
 RT: 12.08 min Scan# 1886
 Delta R.T. -0.00 min
 Lab File: VX002655.D
 Acq: 16 Jun 2018 18:59

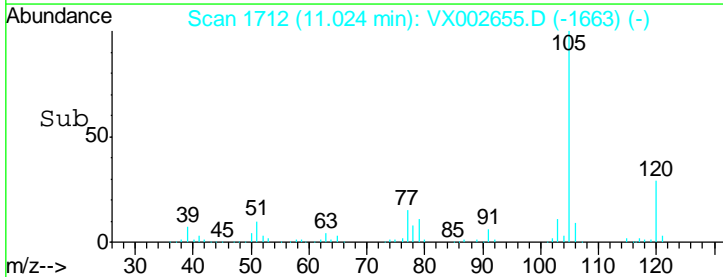
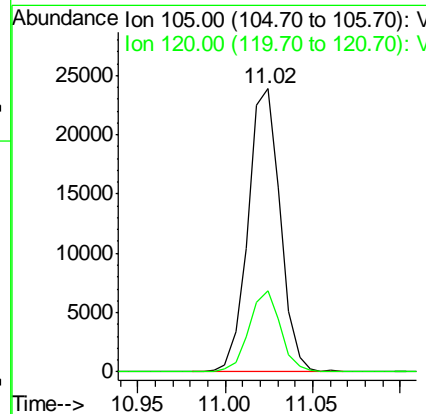
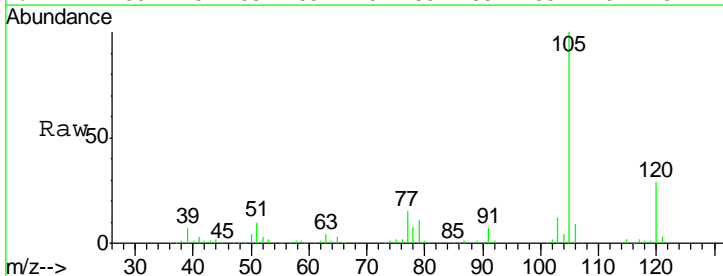
Instrument : MSVOA_X
 ClientSampleId : PR-MW-05-061118DL

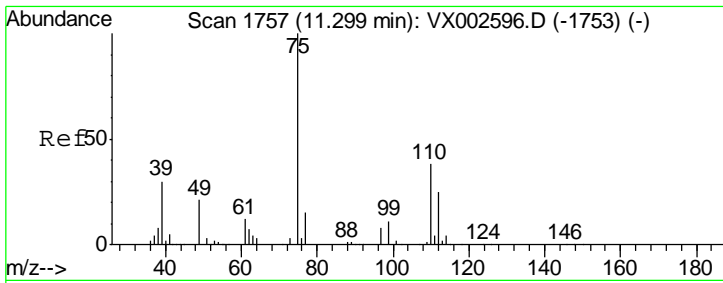
Tgt Ion	Resp	Lower	Upper
152	100		
115	55.0	40.1	120.2
150	157.9	0.0	347.2



#73
 Isopropylbenzene
 Concen: 2.601 ug/l
 RT: 11.02 min Scan# 1712
 Delta R.T. -0.00 min
 Lab File: VX002655.D
 Acq: 16 Jun 2018 18:59

Tgt Ion	Resp	Lower	Upper
105	100		
120	28.0	13.5	40.4

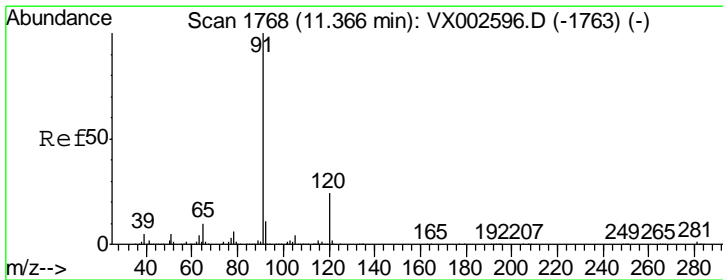
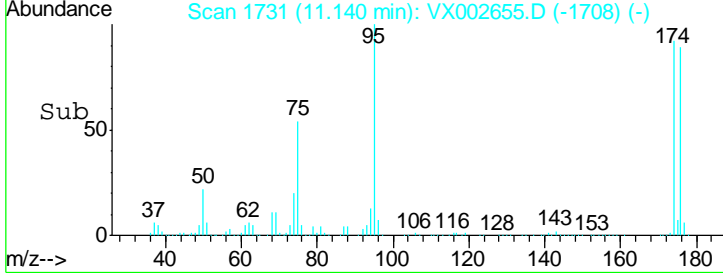
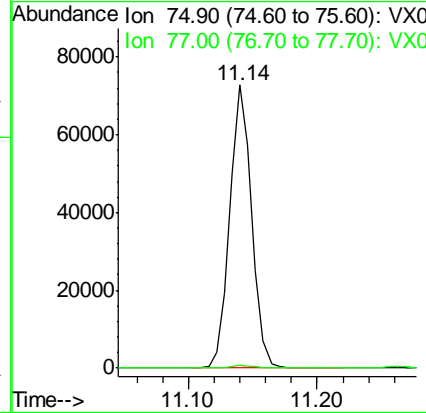
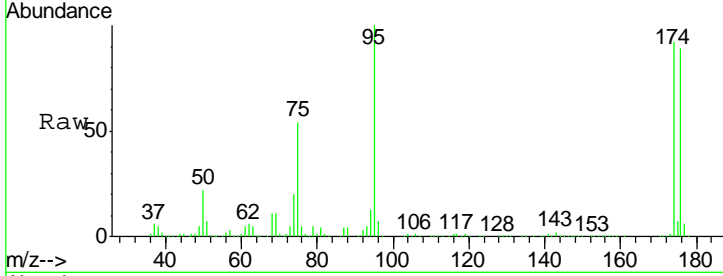




#76
 1,2,3-Trichloropropane
 Concen: 26.401 ug/l
 RT: 11.14 min Scan# 1731
 Delta R.T. -0.16 min
 Lab File: VX002655.D
 Acq: 16 Jun 2018 18:59

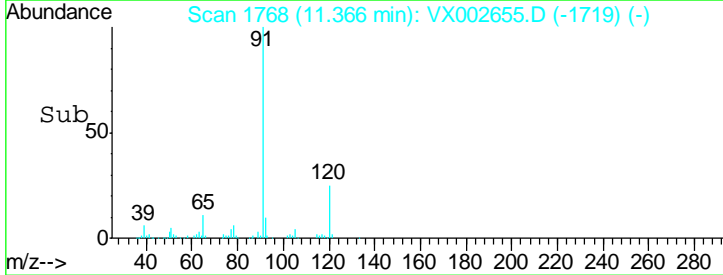
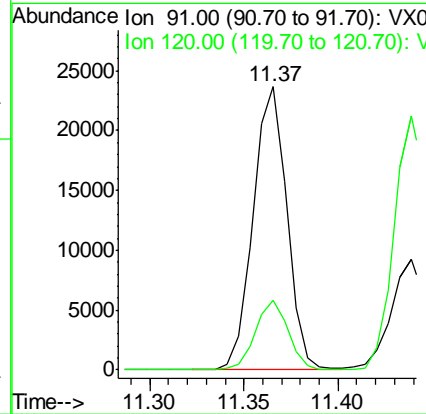
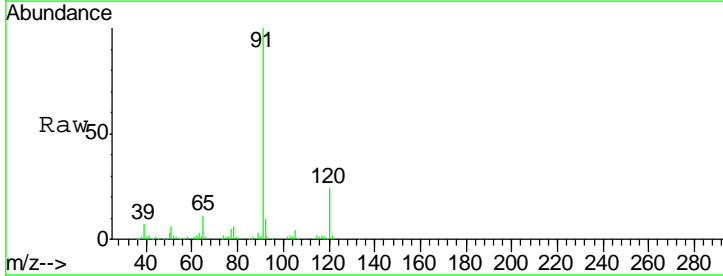
Instrument : MSVOA_X
 ClientSampled : PR-MW-05-061118DL

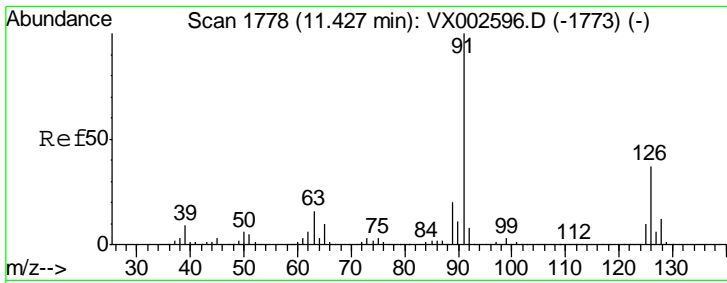
Tgt Ion: 75 Resp: 87277
 Ion Ratio Lower Upper
 75 100
 77 1.3 22.8 68.3#



#78
 n-propylbenzene
 Concen: 2.185 ug/l
 RT: 11.37 min Scan# 1768
 Delta R.T. -0.00 min
 Lab File: VX002655.D
 Acq: 16 Jun 2018 18:59

Tgt Ion: 91 Resp: 29357
 Ion Ratio Lower Upper
 91 100
 120 23.6 11.8 35.4

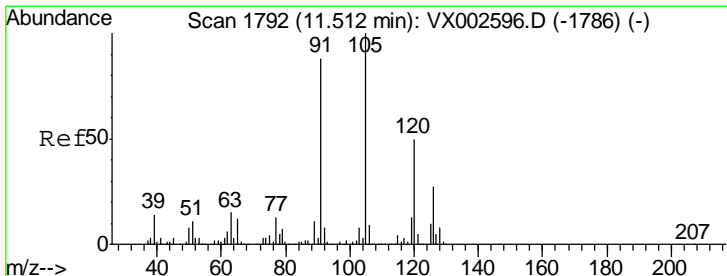
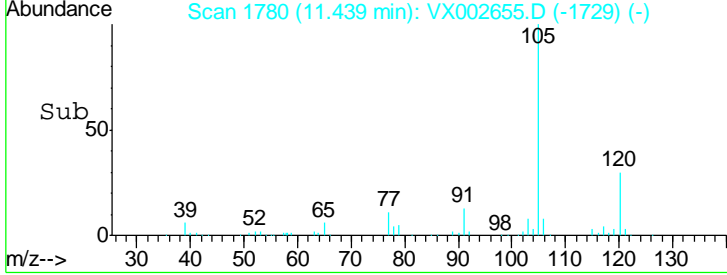
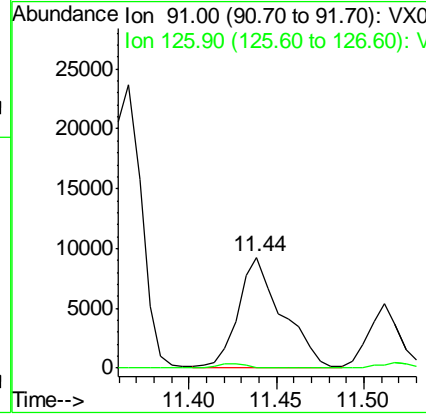
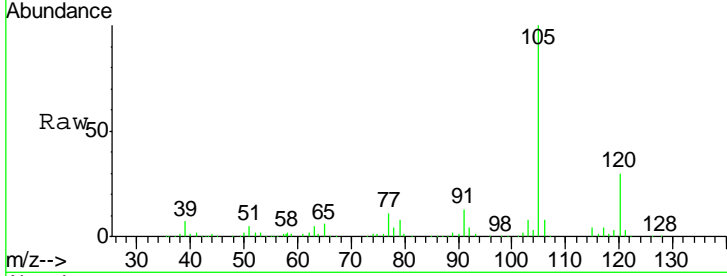




#79
 2-Chlorotoluene
 Concen: 2.044 ug/l
 RT: 11.44 min Scan# 1780
 Delta R.T. 0.01 min
 Lab File: VX002655.D
 Acq: 16 Jun 2018 18:59

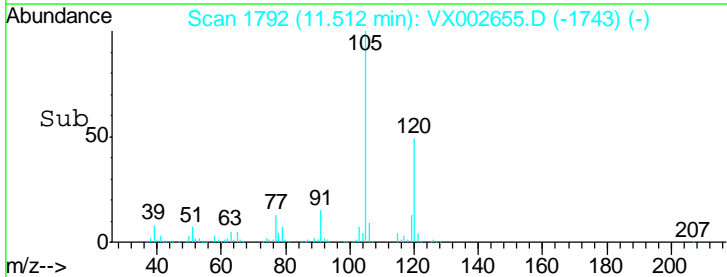
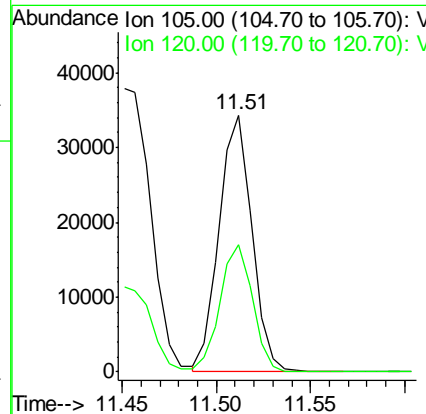
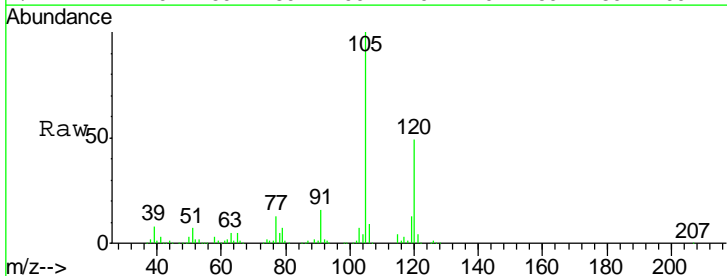
Instrument : MSVOA_X
 ClientSampled : PR-MW-05-061118DL

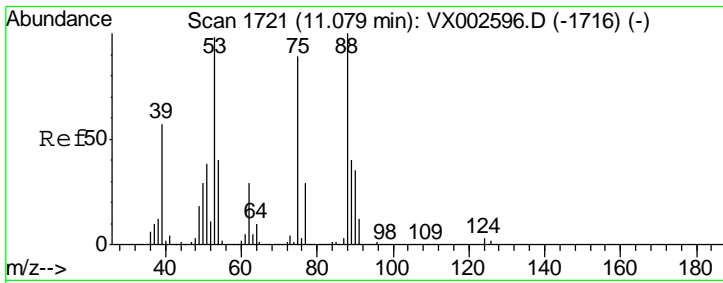
Tgt Ion: 91 Resp: 16396
 Ion Ratio Lower Upper
 91 100
 126 2.8 17.7 53.1#



#80
 1,3,5-Trimethylbenzene
 Concen: 4.194 ug/l
 RT: 11.51 min Scan# 1792
 Delta R.T. -0.00 min
 Lab File: VX002655.D
 Acq: 16 Jun 2018 18:59

Tgt Ion: 105 Resp: 41527
 Ion Ratio Lower Upper
 105 100
 120 49.4 24.4 73.4

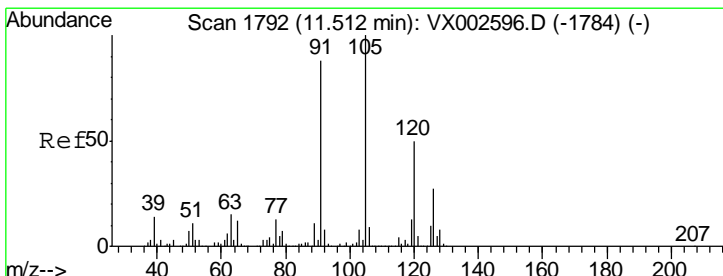
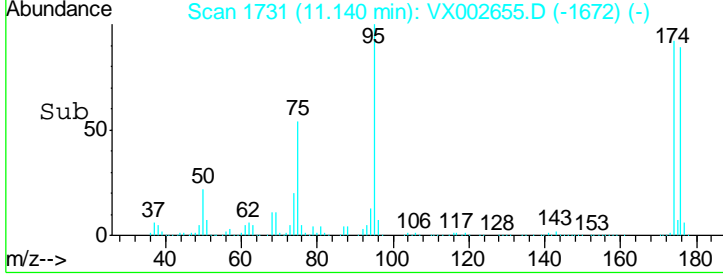
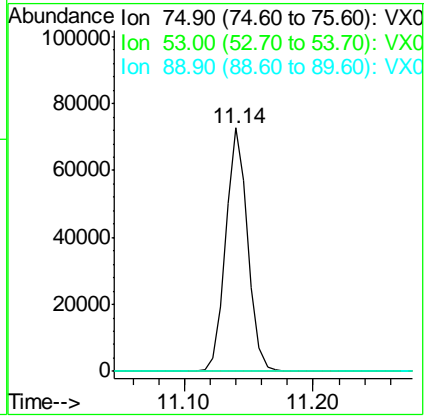
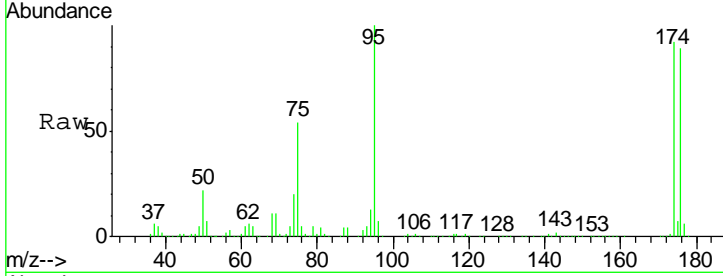




#81
 trans-1,4-Dichloro-2-butene
 Concen: 81.591 ug/l
 RT: 11.14 min Scan# 1731
 Delta R.T. 0.06 min
 Lab File: VX002655.D
 Acq: 16 Jun 2018 18:59

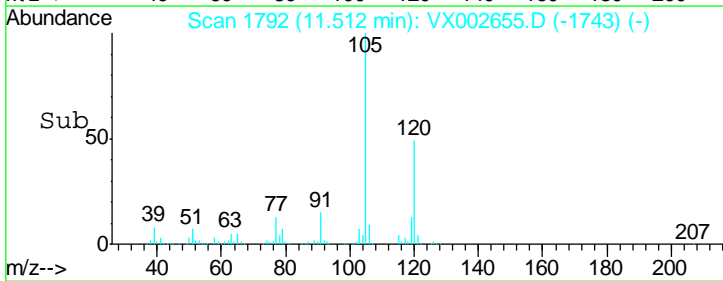
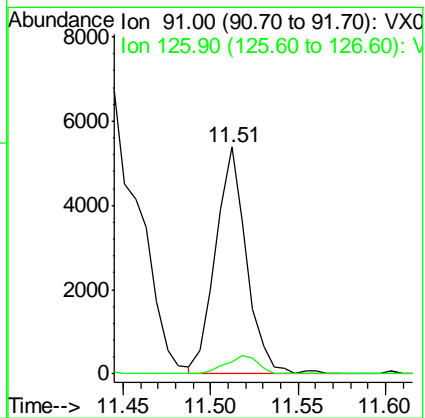
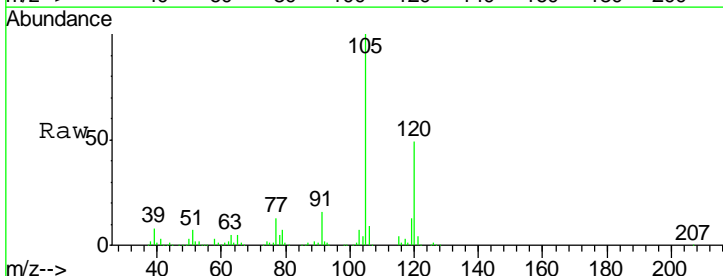
Instrument :
 MSVOA_X
ClientSampled :
 PR-MW-05-061118DL

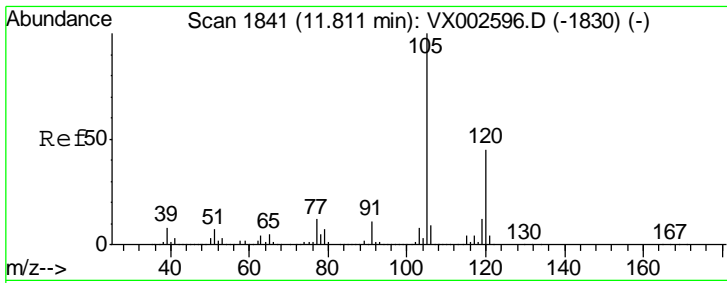
Tgt Ion	Resp	Lower	Upper
75	100		
53	0.1	86.8	130.2#
89	0.0	38.2	57.2#



#82
 4-Chlorotoluene
 Concen: 0.697 ug/l
 RT: 11.51 min Scan# 1792
 Delta R.T. -0.00 min
 Lab File: VX002655.D
 Acq: 16 Jun 2018 18:59

Tgt Ion	Resp	Lower	Upper
91	100		
126	8.4	15.4	46.4#

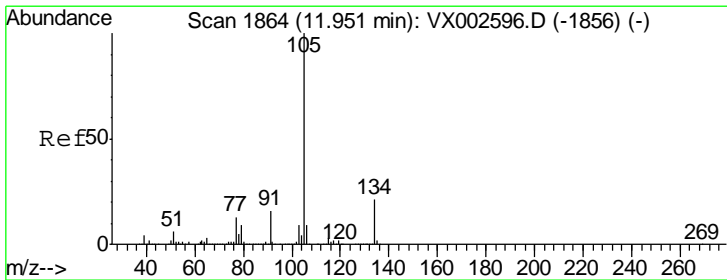
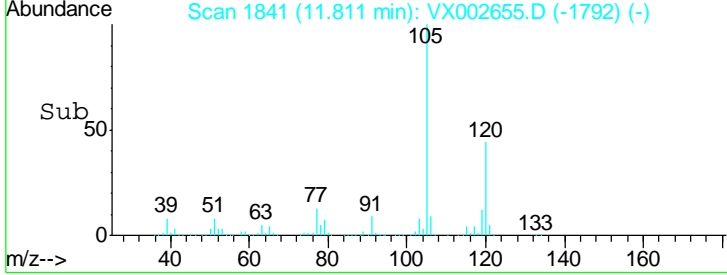
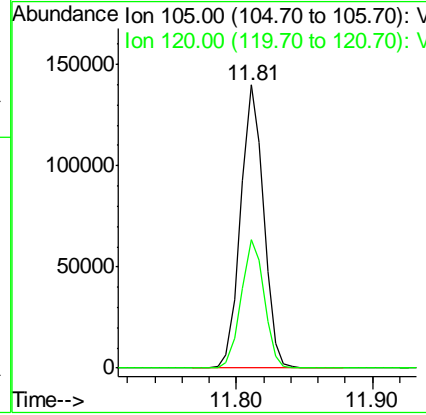
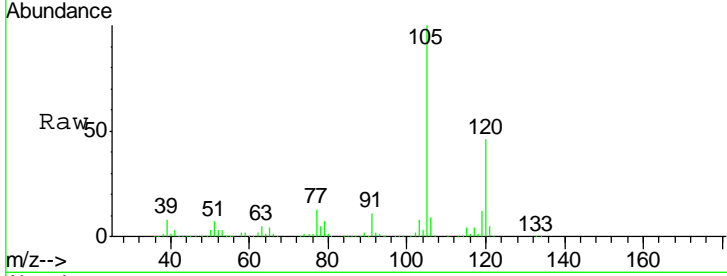




#84
 1,2,4-Trimethylbenzene
 Concen: 16.240 ug/l
 RT: 11.81 min Scan# 1841
 Delta R.T. -0.00 min
 Lab File: VX002655.D
 Acq: 16 Jun 2018 18:59

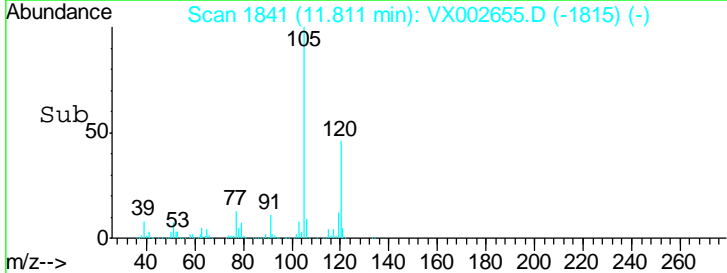
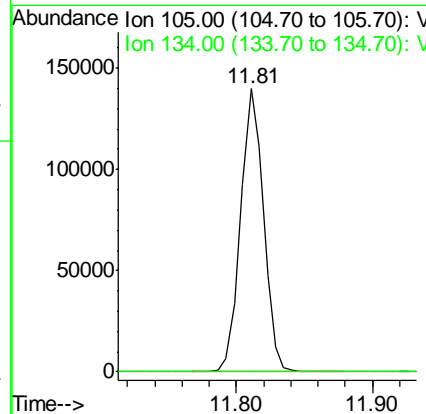
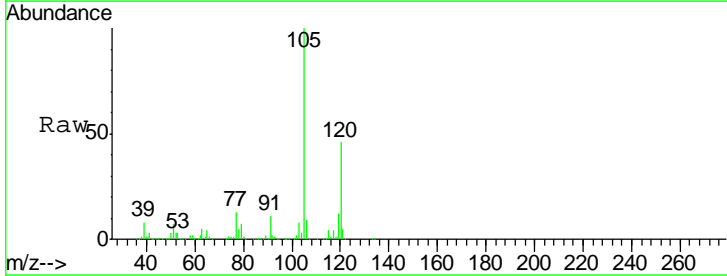
Instrument : MSVOA_X
 ClientSampled : PR-MW-05-061118DL

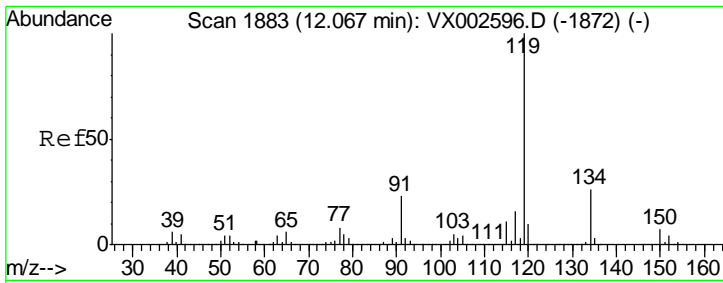
Tgt Ion:105 Resp: 164087
 Ion Ratio Lower Upper
 105 100
 120 45.7 22.3 66.8



#85
 sec-Butylbenzene
 Concen: 13.834 ug/l
 RT: 11.81 min Scan# 1841
 Delta R.T. -0.14 min
 Lab File: VX002655.D
 Acq: 16 Jun 2018 18:59

Tgt Ion:105 Resp: 164087
 Ion Ratio Lower Upper
 105 100
 134 0.1 10.4 31.1#

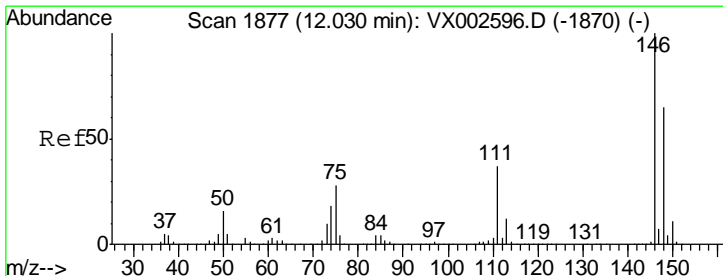
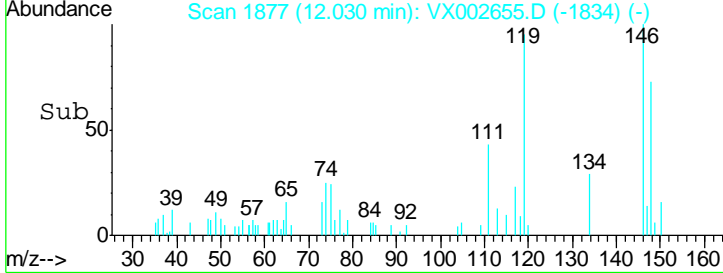
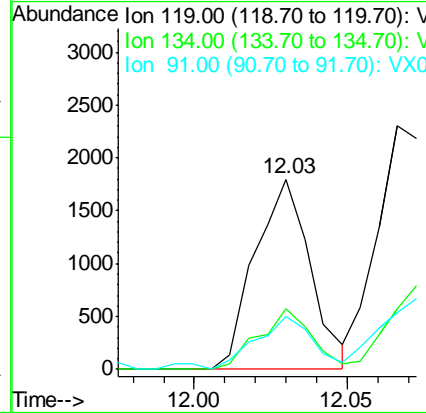
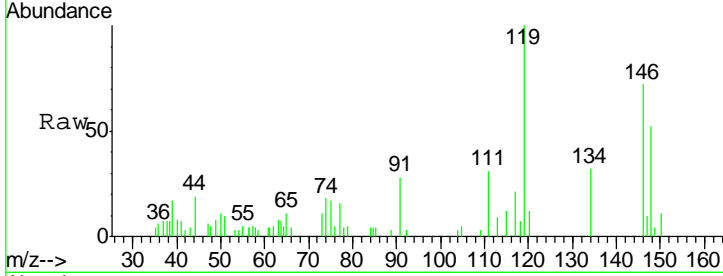




#86
 p-Isopropyltoluene
 Concen: 0.211 ug/l
 RT: 12.03 min Scan# 1877
 Delta R.T. -0.04 min
 Lab File: VX002655.D
 Acq: 16 Jun 2018 18:59

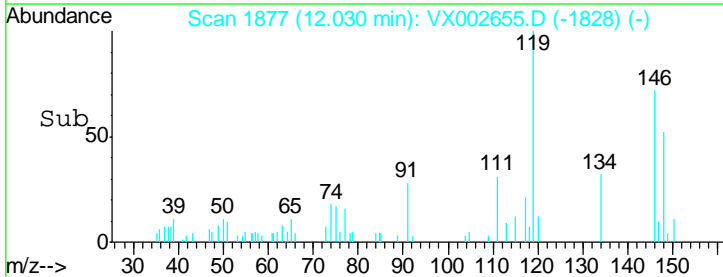
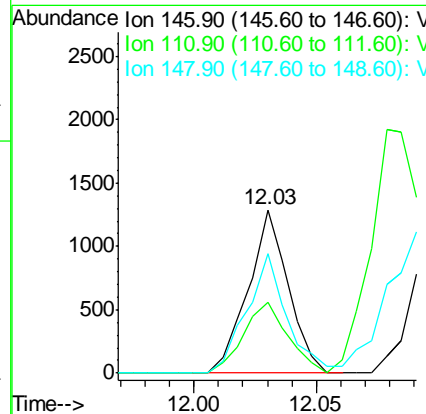
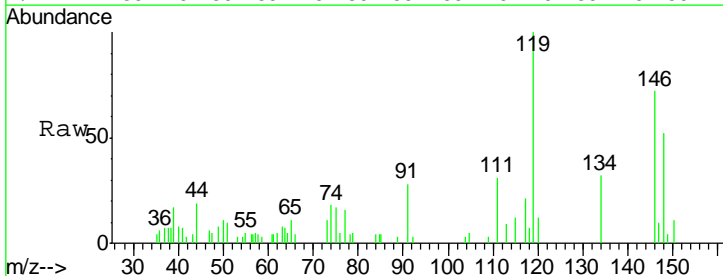
Instrument : MSVOA_X
 ClientSampled : PR-MW-05-06118DL

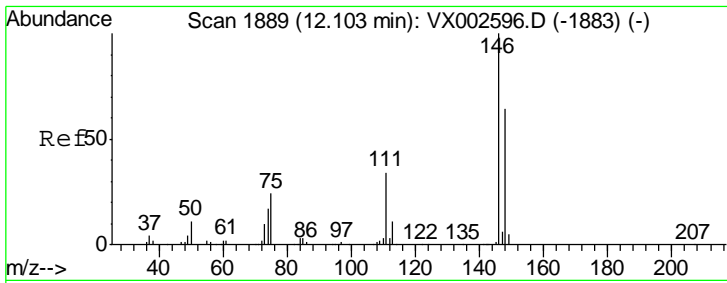
Tgt Ion	Resp	Lower	Upper
119	100		
134	30.7	13.4	40.1
91	30.0	11.9	35.7



#87
 1,3-Dichlorobenzene
 Concen: 0.246 ug/l
 RT: 12.03 min Scan# 1877
 Delta R.T. -0.00 min
 Lab File: VX002655.D
 Acq: 16 Jun 2018 18:59

Tgt Ion	Resp	Lower	Upper
146	100		
111	47.5	18.9	56.7
148	72.9	32.1	96.3

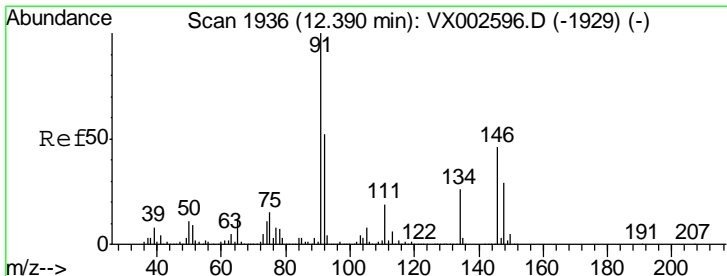
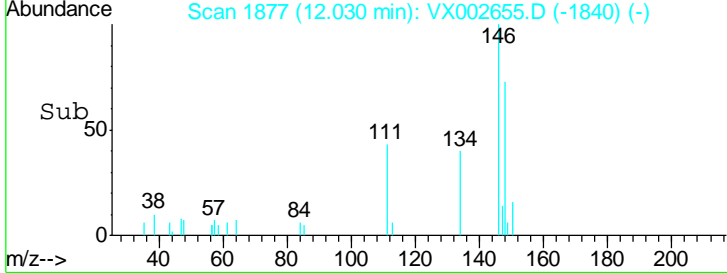
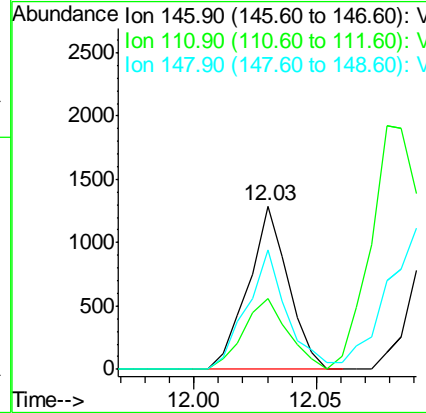
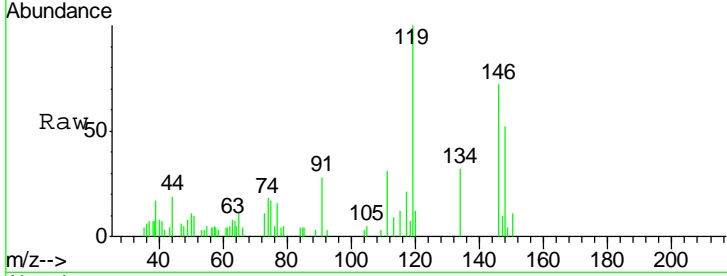




#88
 1,4-Dichlorobenzene
 Concen: 0.242 ug/l
 RT: 12.03 min Scan# 1877
 Delta R.T. -0.07 min
 Lab File: VX002655.D
 Acq: 16 Jun 2018 18:59

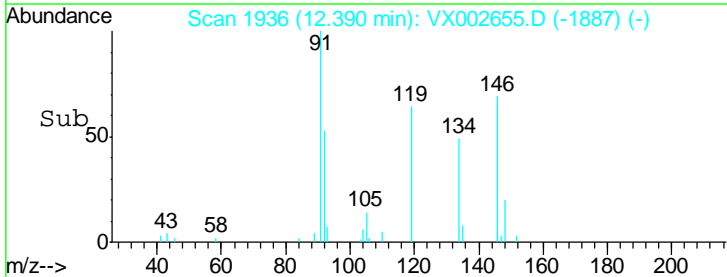
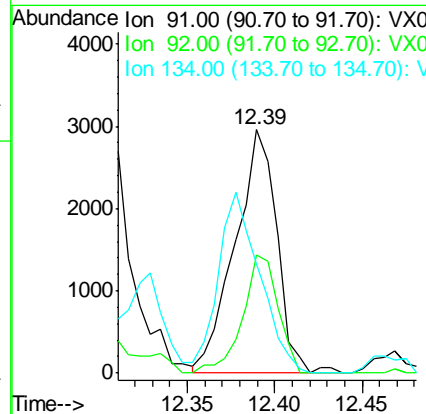
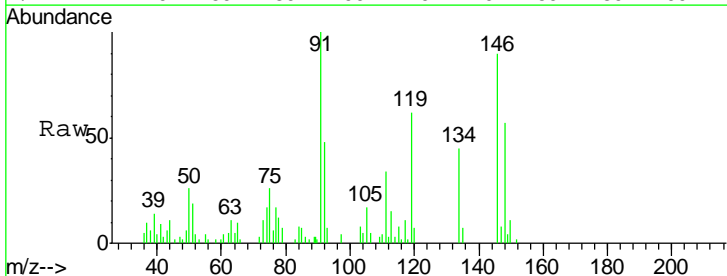
Instrument : MSVOA_X
 ClientSampleID : PR-MW-05-061118DL

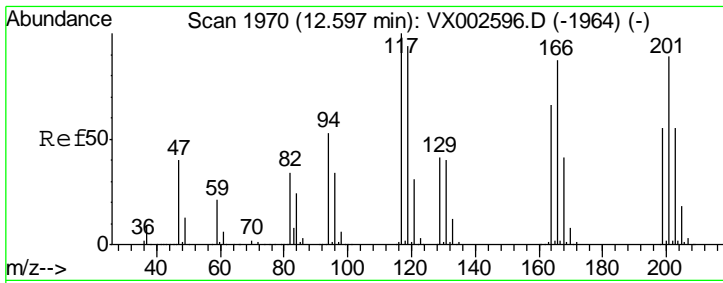
Tgt Ion	Resp	Lower	Upper
146	1475		
111	47.5	18.7	56.1
148	72.9	32.4	97.0



#89
 n-Butylbenzene
 Concen: 0.519 ug/l
 RT: 12.39 min Scan# 1936
 Delta R.T. -0.00 min
 Lab File: VX002655.D
 Acq: 16 Jun 2018 18:59

Tgt Ion	Resp	Lower	Upper
91	4917		
92	41.1	26.0	78.0
134	73.2	13.5	40.5#

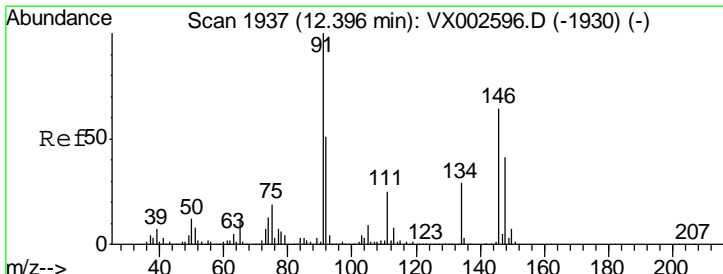
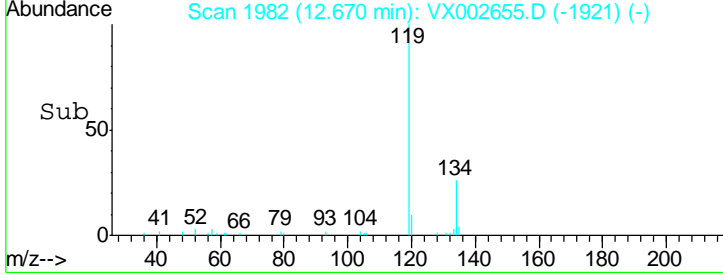
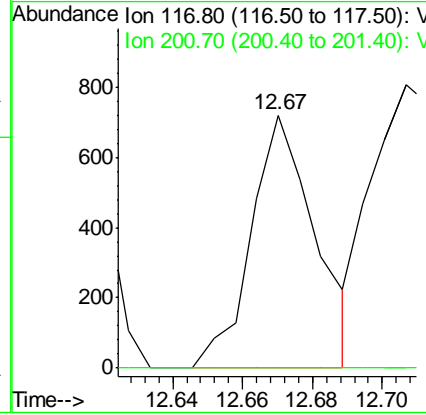
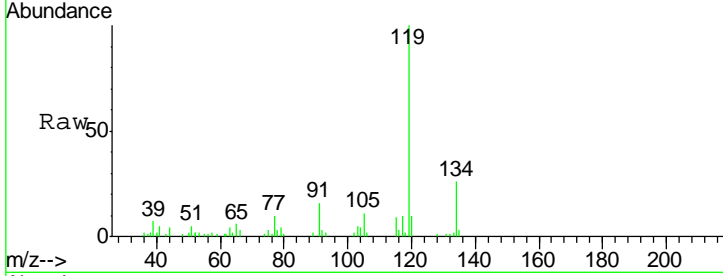




#90
 Hexachloroethane
 Concen: 3.142 ug/l
 RT: 12.67 min Scan# 1982
 Delta R.T. 0.07 min
 Lab File: VX002655.D
 Acq: 16 Jun 2018 18:59

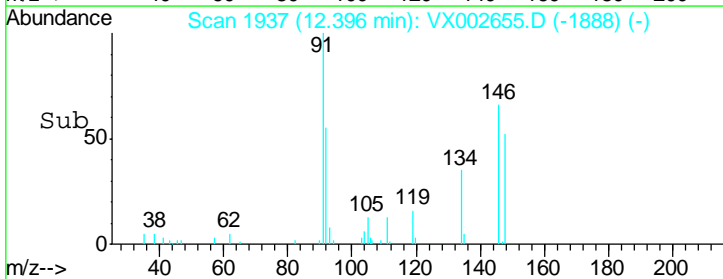
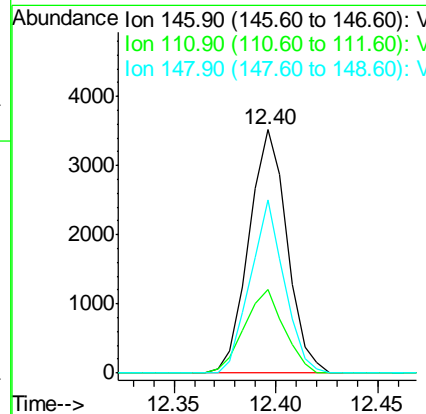
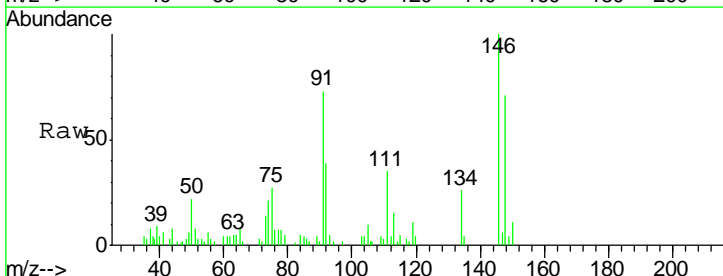
Instrument : MSVOA_X
 ClientSampled : PR-MW-05-061118DL

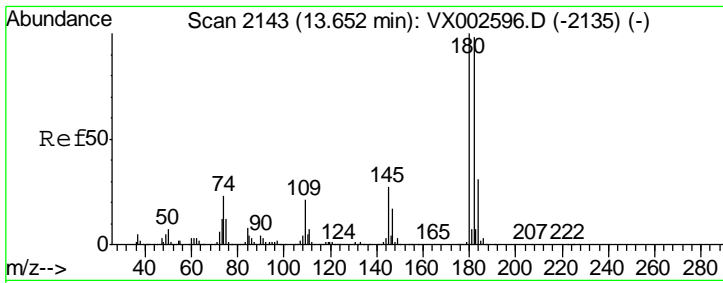
Tgt Ion: 117 Resp: 914
 Ion Ratio Lower Upper
 117 100
 201 0.0 49.0 147.0#



#91
 1,2-Dichlorobenzene
 Concen: 0.759 ug/l
 RT: 12.40 min Scan# 1937
 Delta R.T. -0.00 min
 Lab File: VX002655.D
 Acq: 16 Jun 2018 18:59

Tgt Ion: 146 Resp: 4573
 Ion Ratio Lower Upper
 146 100
 111 35.6 19.4 58.1
 148 63.4 31.7 95.1

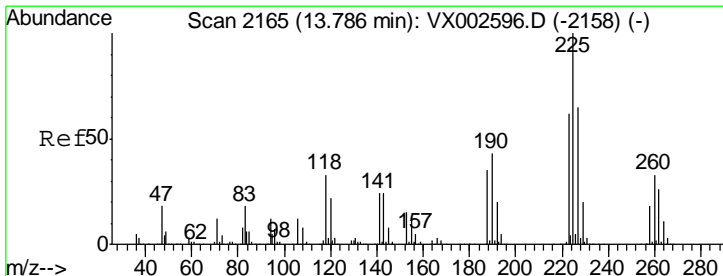
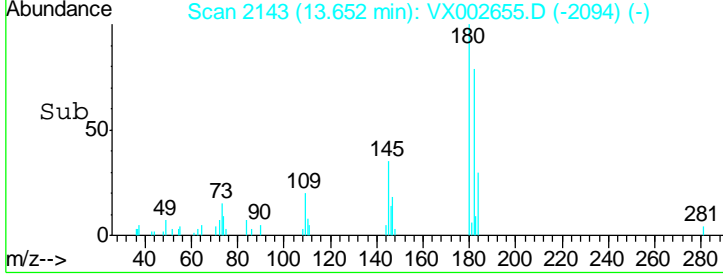
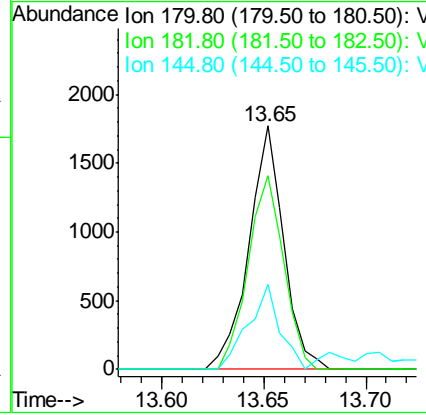
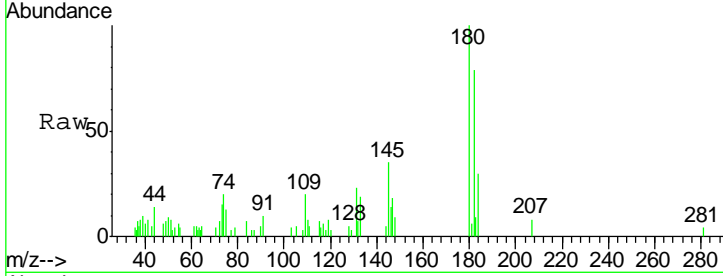




#93
 1,2,4-Trichlorobenzene
 Concen: 0.480 ug/l
 RT: 13.65 min Scan# 2143
 Delta R.T. -0.00 min
 Lab File: VX002655.D
 Acq: 16 Jun 2018 18:59

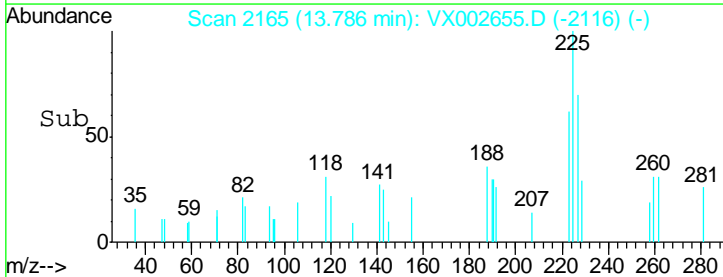
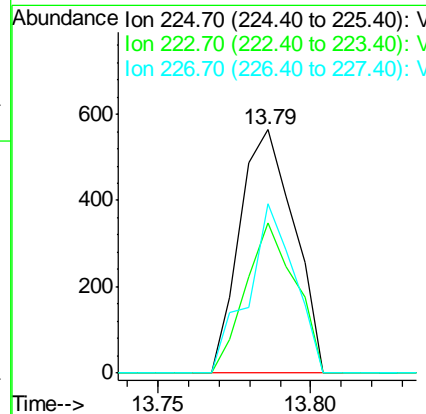
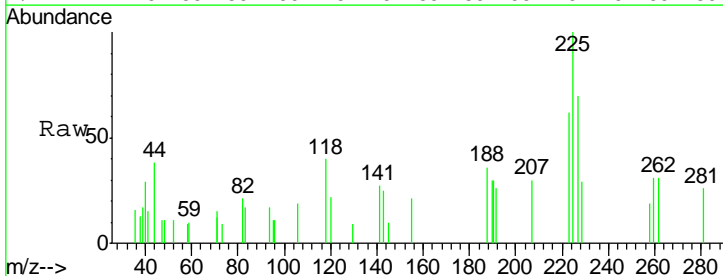
Instrument : MSVOA_X
 ClientSampled : PR-MW-05-061118DL

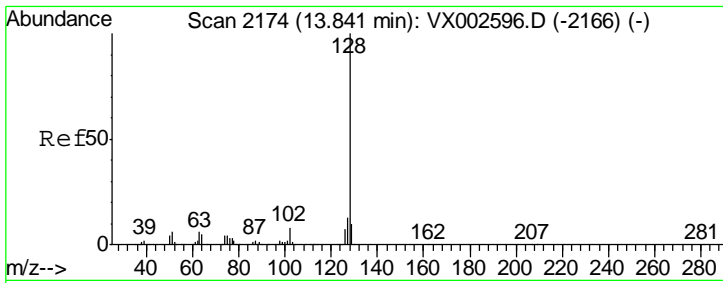
Tgt Ion	Resp	Lower	Upper
180	100		
182	81.3	47.7	143.1
145	31.7	14.1	42.4



#94
 Hexachlorobutadiene
 Concen: 0.300 ug/l
 RT: 13.79 min Scan# 2165
 Delta R.T. -0.00 min
 Lab File: VX002655.D
 Acq: 16 Jun 2018 18:59

Tgt Ion	Resp	Lower	Upper
225	100		
223	56.8	31.6	95.0
227	59.5	32.4	97.2

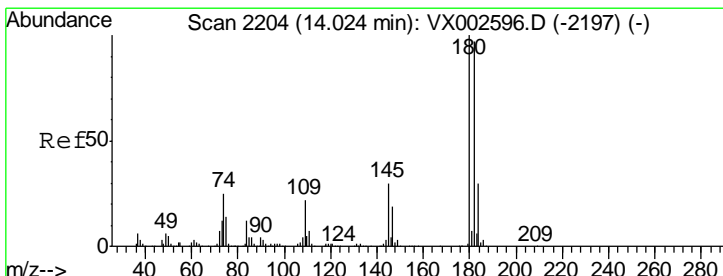
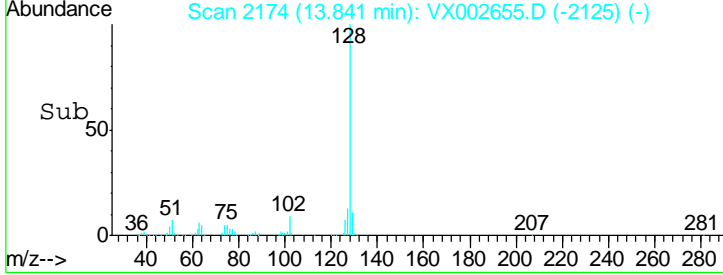
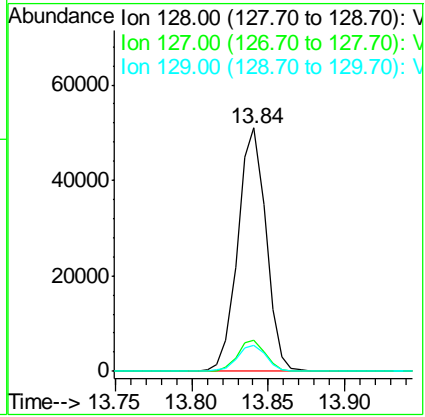
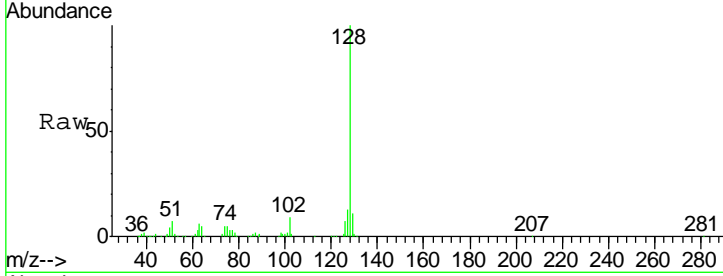




#95
 Naphthalene
 Concen: 5.539 ug/l
 RT: 13.84 min Scan# 2174
 Delta R.T. -0.00 min
 Lab File: VX002655.D
 Acq: 16 Jun 2018 18:59

Instrument : MSVOA_X
 ClientSampled : PR-MW-05-061118DL

Tgt Ion	Resp	Lower	Upper
128	65171		
127	12.8	10.4	15.6
129	11.0	8.6	13.0



#96
 1,2,3-Trichlorobenzene
 Concen: 0.351 ug/l
 RT: 14.02 min Scan# 2204
 Delta R.T. -0.00 min
 Lab File: VX002655.D
 Acq: 16 Jun 2018 18:59

Tgt Ion	Resp	Lower	Upper
180	1540		
182	94.5	48.0	144.0
145	44.7	14.8	44.3#

