

Data Path : Z:\VOASRV\HPCHEM1\MSVOA X\DATA\VX061618\
 Data File : VX002670.D
 Acq On : 17 Jun 2018 01:37
 Operator : JC/MD
 Sample : J3509-04
 Misc : 5.0mL/MSVOA X/WATER
 ALS Vial : 20 Sample Multiplier: 1

Instrument :
 MSVOA_X
 ClientSampleId :
 DUP-061318

Quant Time: Jun 18 01:42:38 2018
 Quant Method : Z:\VOASRV\HPCHEM1\MSVOA_X\METHOD\82X061518W.M
 Quant Title : SW846 8260
 QLast Update : Sat Jun 16 01:37:33 2018
 Response via : Initial Calibration

Internal Standards	R.T.	QIon	Response	Conc	Units	Dev(Min)
1) Pentafluorobenzene	5.67	168	213991	50.00	ug/l	0.00
34) 1,4-Difluorobenzene	6.87	114	302002	50.00	ug/l	0.00
63) Chlorobenzene-d5	10.12	117	282635	50.00	ug/l	0.00
72) 1,4-Dichlorobenzene-d4	12.08	152	155903	50.00	ug/l	0.00

System Monitoring Compounds	R.T.	QIon	Response	Conc	Units	Dev(Min)
33) 1,2-Dichloroethane-d4	6.07	65	144270	44.37	ug/l	0.00
Spiked Amount				50.000		
Recovery						88.74%
35) Dibromofluoromethane	5.51	113	111611	46.31	ug/l	0.00
Spiked Amount				50.000		
Recovery						92.62%
50) Toluene-d8	8.72	98	437288	47.78	ug/l	0.00
Spiked Amount				50.000		
Recovery						95.56%
62) 4-Bromofluorobenzene	11.14	95	149354	43.07	ug/l	0.00
Spiked Amount				50.000		
Recovery						86.14%

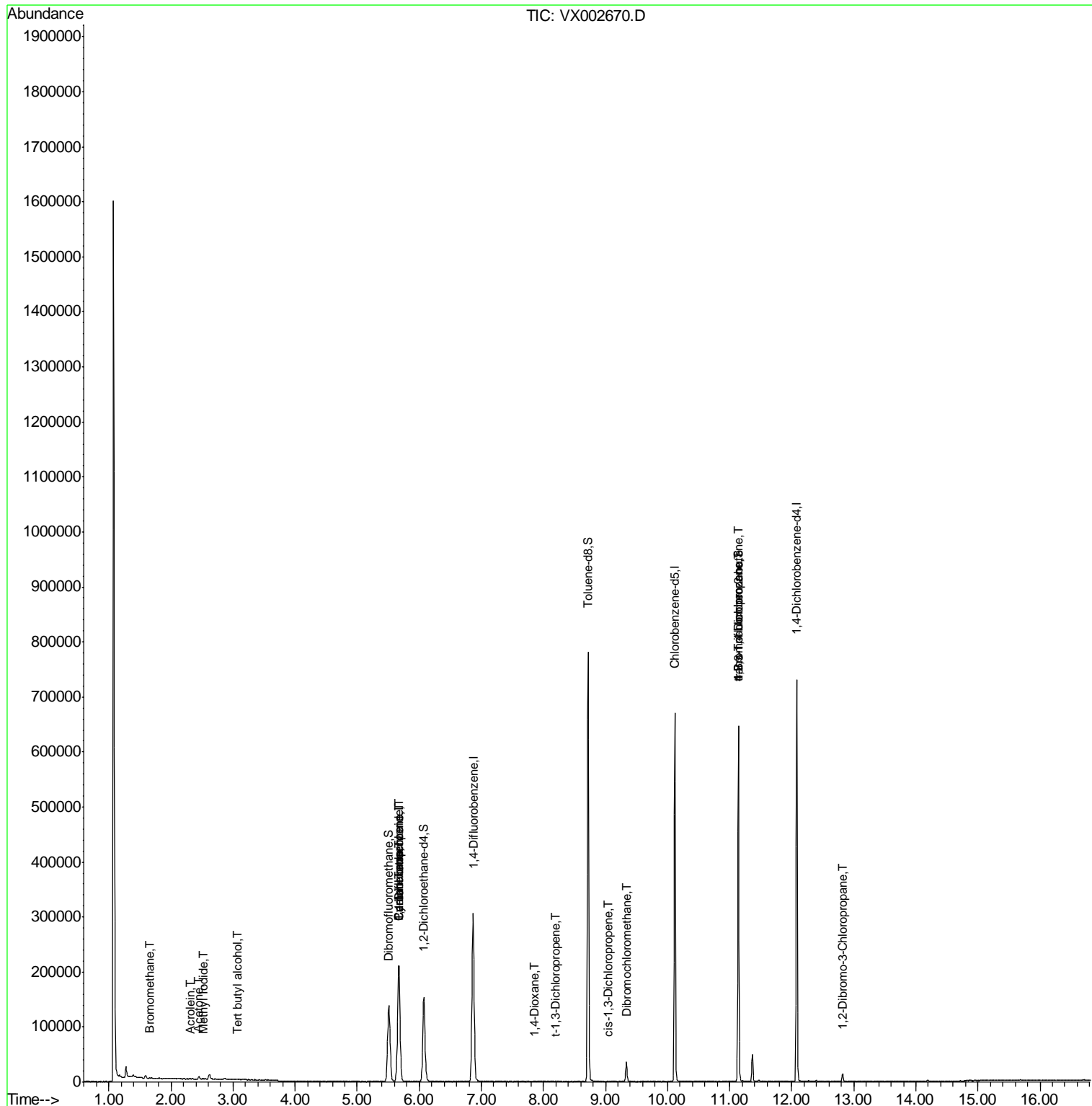
Target Compounds	R.T.	QIon	Response	Conc	Units	Qvalue
5) Bromomethane	1.65	94	954	0.564	ug/l	83
10) Methyl Iodide	2.51	142	904	5.417	ug/l	96
11) Tert butyl alcohol	3.07	59	1378	2.050	ug/l #	80
13) Acrolein	2.31	56	159	7.354	ug/l #	3
16) Acetone	2.45	43	5078	3.539	ug/l	99
31) Cyclohexane	5.67	56	4499	1.172	ug/l #	1
36) 1,1-Dichloropropene	5.67	75	14874	4.637	ug/l #	51
38) Carbon Tetrachloride	5.67	117	19415	6.079	ug/l #	15
49) 1,4-Dioxane	7.85	88	20	0.344	ug/l #	1
53) t-1,3-Dichloropropene	8.20	75	19	2.398	ug/l #	43
54) cis-1,3-Dichloropropene	9.04	75	23	3.218	ug/l #	60
60) Dibromochloromethane	9.34	129	34	3.772	ug/l #	11
76) 1,2,3-Trichloropropane	11.14	75	78210	26.585	ug/l #	33
81) trans-1,4-Dichloro-2-buten	11.14	75	78210	82.132	ug/l #	7
92) 1,2-Dibromo-3-Chloropropan	12.82	75	361	0.560	ug/l #	1

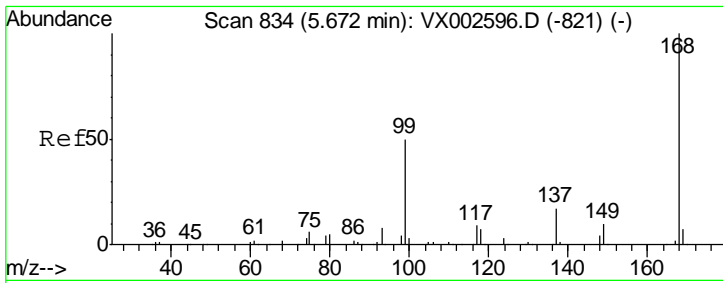
(#) = qualifier out of range (m) = manual integration (+) = signals summed

Data Path : Z:\VOASRV\HPCHEM1\MSVOA X\DATA\VX061618\
 Data File : VX002670.D
 Acq On : 17 Jun 2018 01:37
 Operator : JC/MD
 Sample : J3509-04
 Misc : 5.0mL/MSVOA X/WATER
 ALS Vial : 20 Sample Multiplier: 1

Instrument :
 MSVOA_X
 ClientSampleId :
 DUP-061318

Quant Time: Jun 18 01:42:38 2018
 Quant Method : Z:\VOASRV\HPCHEM1\MSVOA_X\METHOD\82X061518W.M
 Quant Title : SW846 8260
 QLast Update : Sat Jun 16 01:37:33 2018
 Response via : Initial Calibration

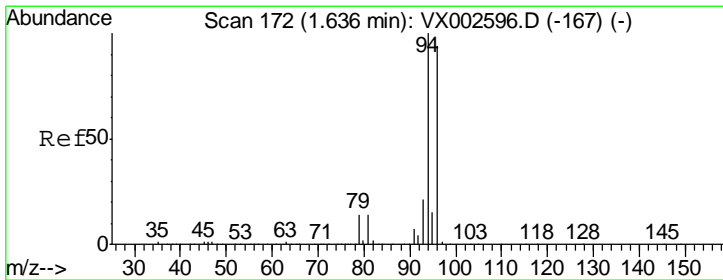
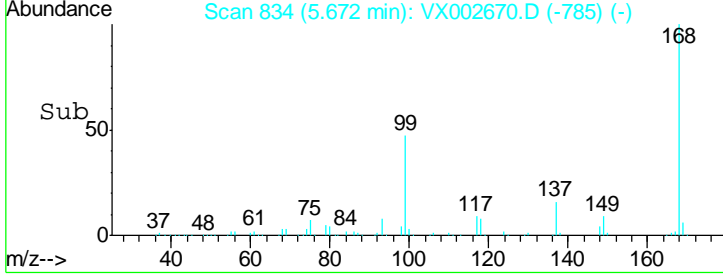
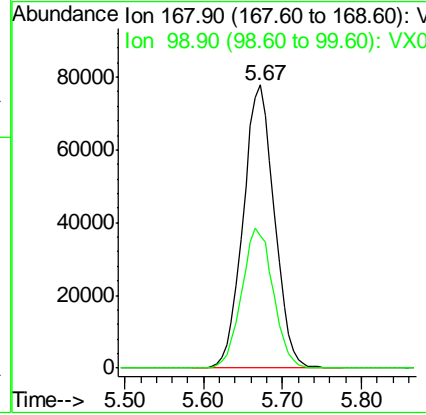
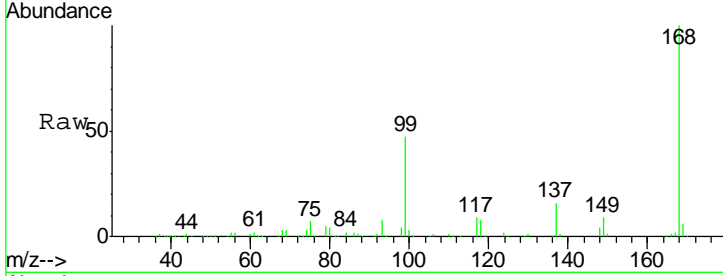




#1
 Pentafluorobenzene
 Concen: 50.000 ug/l
 RT: 5.67 min Scan# 834
 Delta R.T. 0.00 min
 Lab File: VX002670.D
 Acq: 17 Jun 2018 01:37

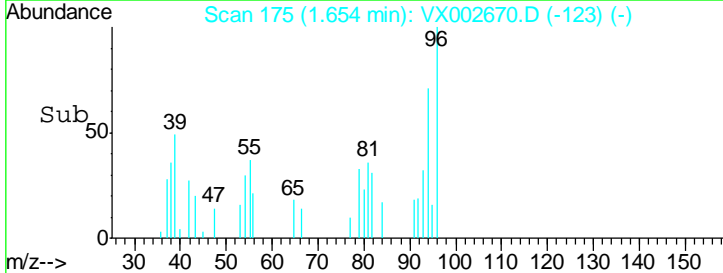
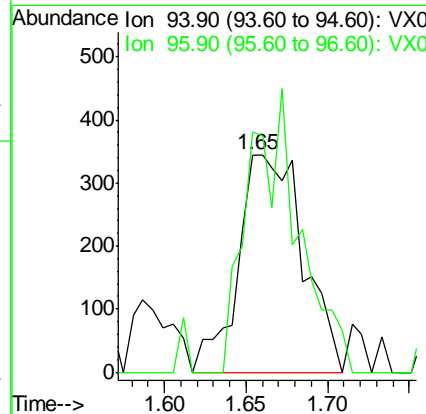
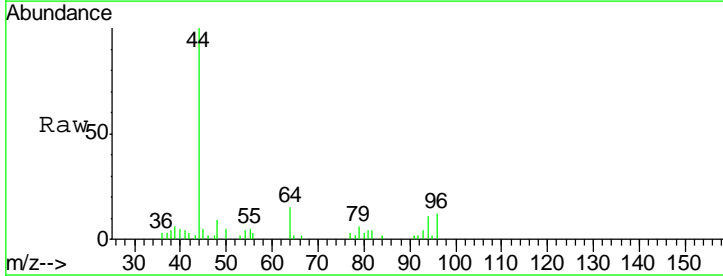
Instrument : MSVOA_X
 ClientSampled : DUP-061318

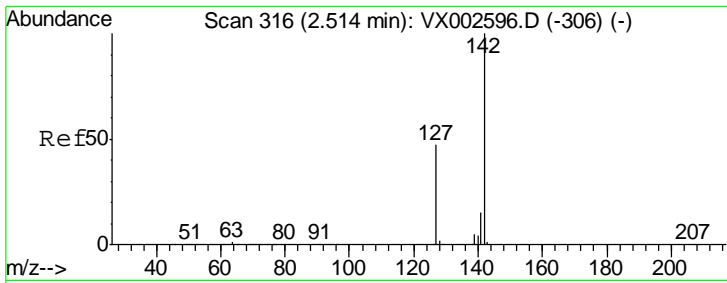
Tgt Ion	Resp	Lower	Upper
168	100		
99	46.6	39.3	58.9



#5
 Bromomethane
 Concen: 0.564 ug/l
 RT: 1.65 min Scan# 175
 Delta R.T. 0.02 min
 Lab File: VX002670.D
 Acq: 17 Jun 2018 01:37

Tgt Ion	Resp	Lower	Upper
94	100		
96	110.4	74.9	112.3

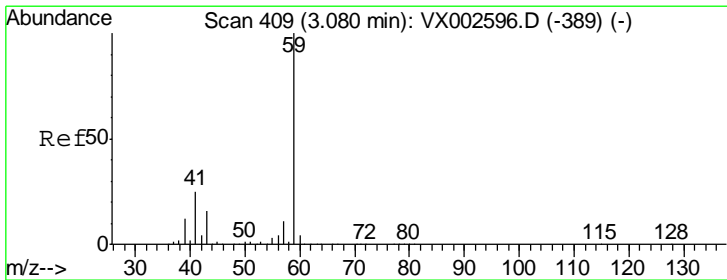
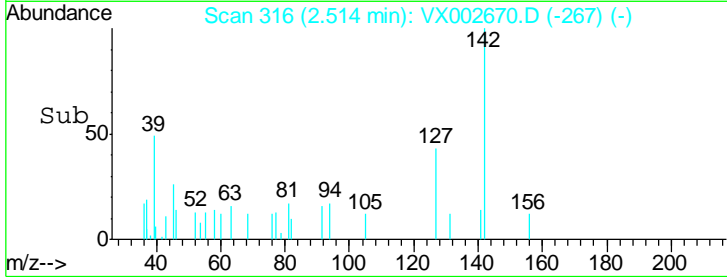
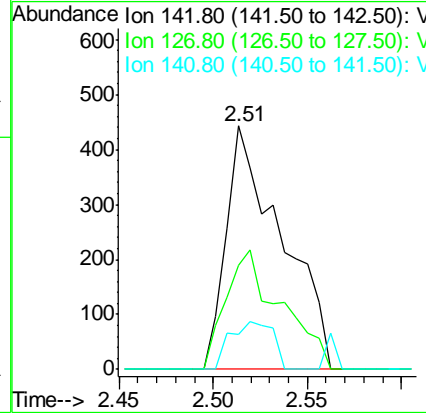
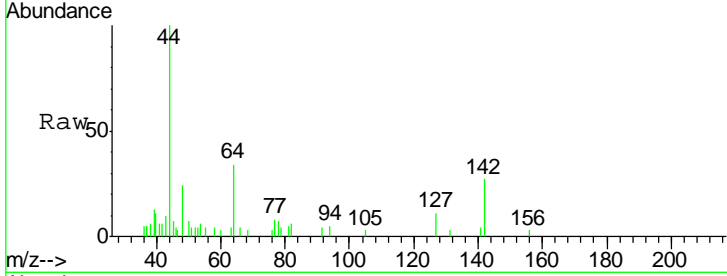




#10
Methyl Iodide
Concen: 5.417 ug/l
RT: 2.51 min Scan# 316
Delta R.T. 0.00 min
Lab File: VX002670.D
Acq: 17 Jun 2018 01:37

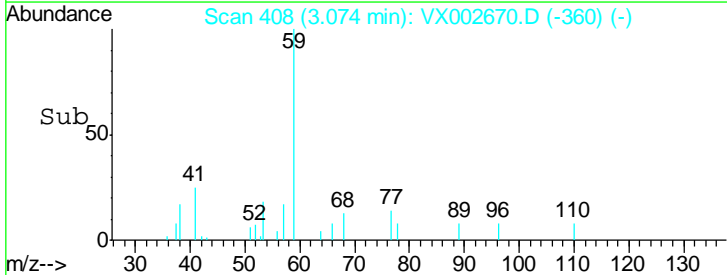
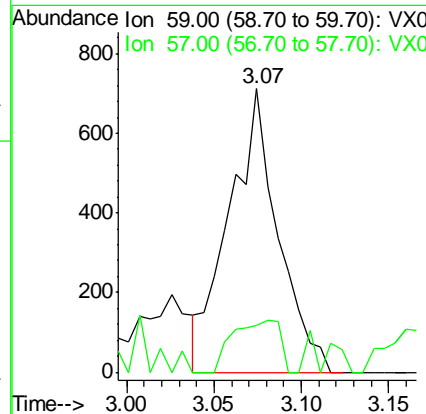
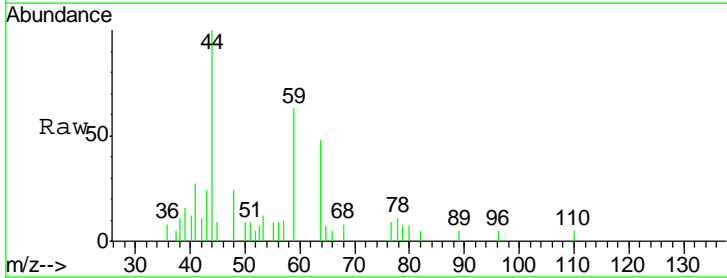
Instrument :
MSVOA_X
ClientSampled :
DUP-061318

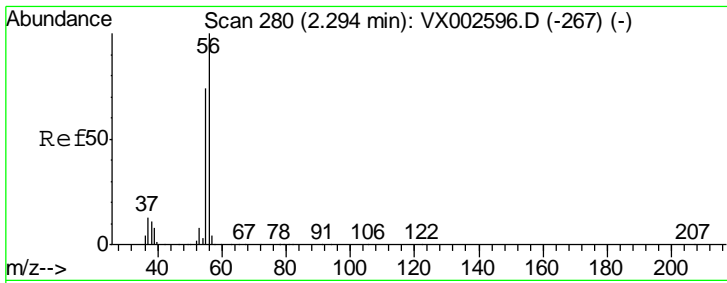
Tgt Ion	Resp	Lower	Upper
142	100		
127	48.7	36.6	55.0
141	15.0	11.3	16.9



#11
Tert butyl alcohol
Concen: 2.050 ug/l
RT: 3.07 min Scan# 408
Delta R.T. -0.01 min
Lab File: VX002670.D
Acq: 17 Jun 2018 01:37

Tgt Ion	Resp	Lower	Upper
59	100		
57	17.7	8.2	12.2#

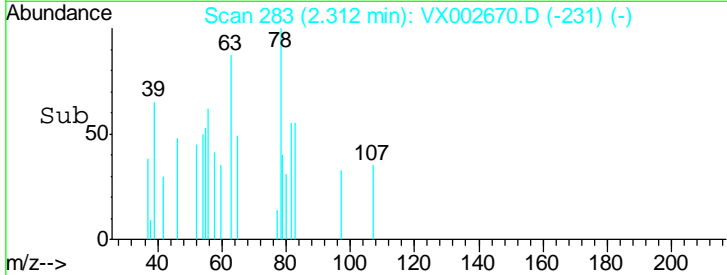
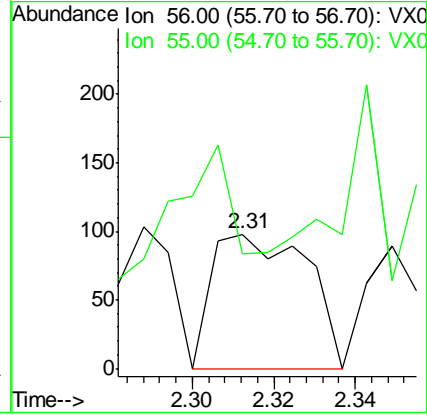
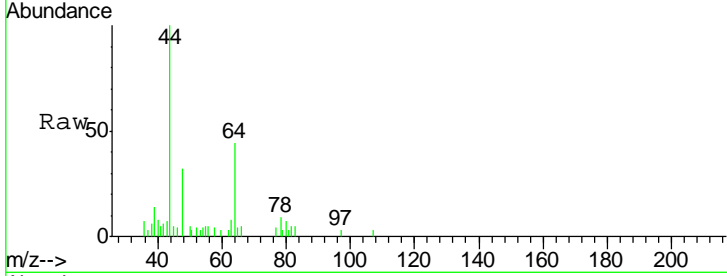




#13
 Acrolein
 Concen: 7.354 ug/l
 RT: 2.31 min Scan# 283
 Delta R.T. 0.02 min
 Lab File: VX002670.D
 Acq: 17 Jun 2018 01:37

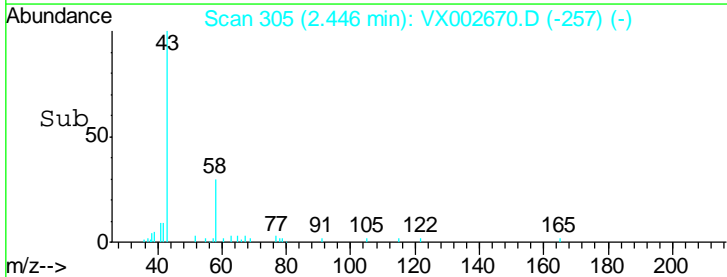
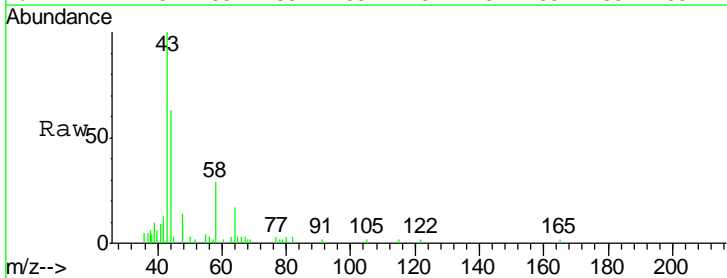
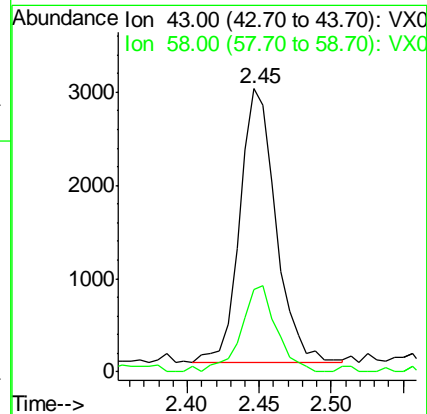
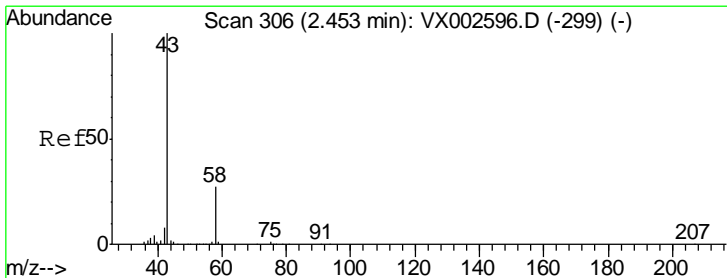
Instrument :
 MSVOA_X
 ClientSampled :
 DUP-061318

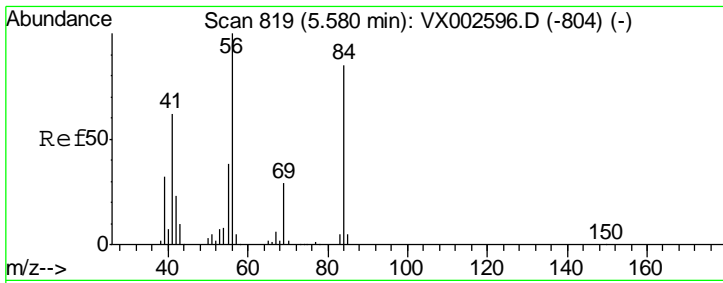
Tgt Ion: 56 Resp: 159
 Ion Ratio Lower Upper
 56 100
 55 151.6 57.0 85.4#



#16
 Acetone
 Concen: 3.539 ug/l
 RT: 2.45 min Scan# 305
 Delta R.T. -0.01 min
 Lab File: VX002670.D
 Acq: 17 Jun 2018 01:37

Tgt Ion: 43 Resp: 5078
 Ion Ratio Lower Upper
 43 100
 58 28.1 22.1 33.1

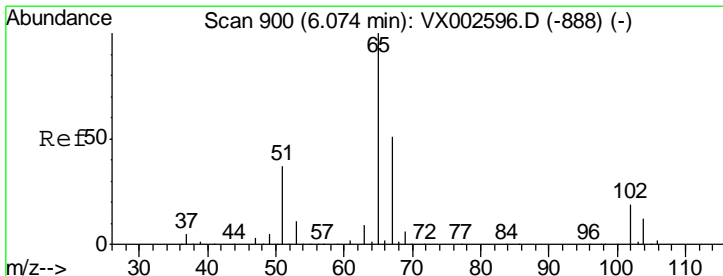
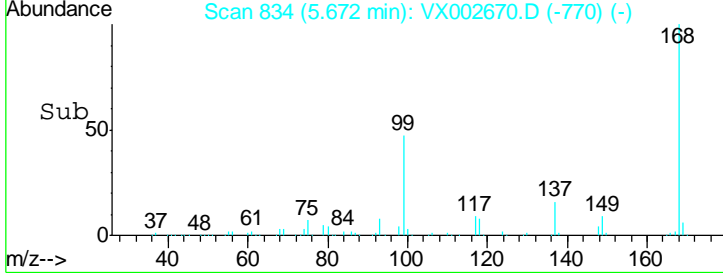
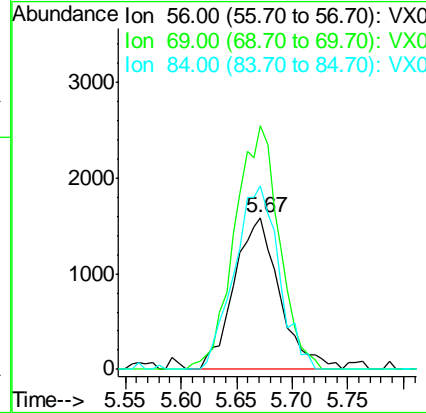
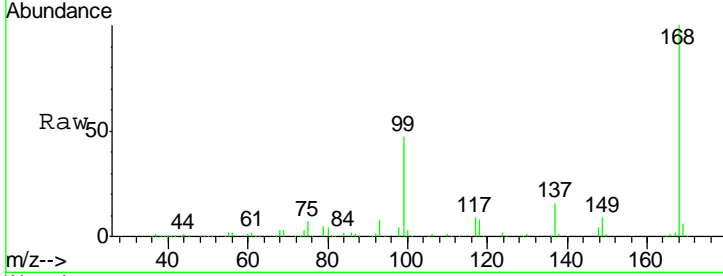




#31
 Cyclohexane
 Concen: 1.172 ug/l
 RT: 5.67 min Scan# 834
 Delta R.T. 0.09 min
 Lab File: VX002670.D
 Acq: 17 Jun 2018 01:37

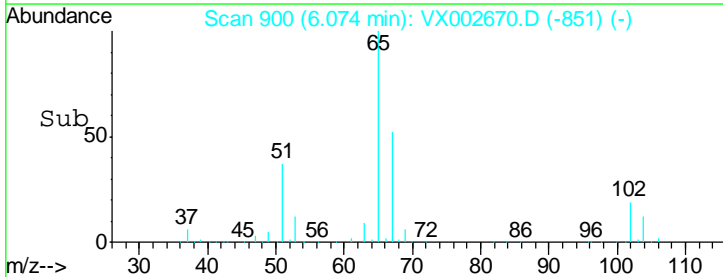
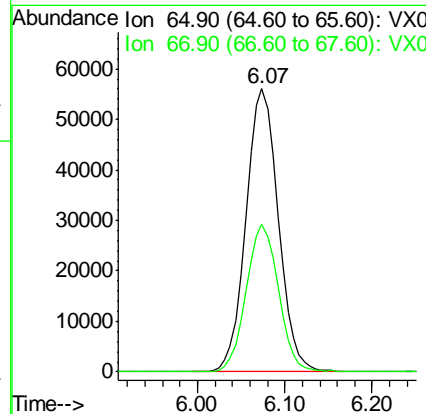
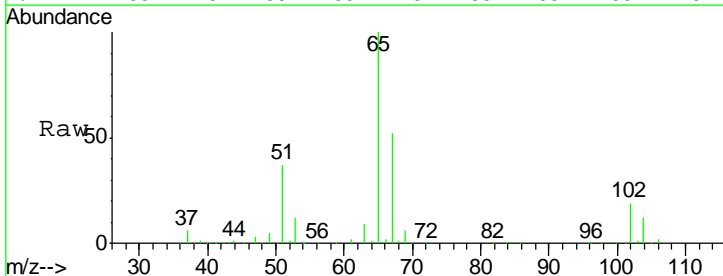
Instrument :
 MSVOA_X
 ClientSampled :
 DUP-061318

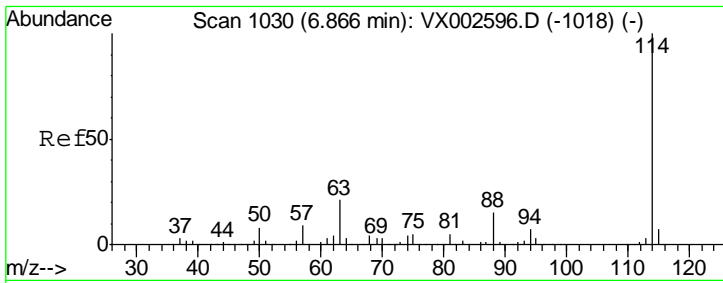
Tgt Ion	Resp	Lower	Upper
56	100		
69	160.4	23.7	35.5#
84	120.5	64.1	96.1#



#33
 1,2-Dichloroethane-d4
 Concen: 44.365 ug/l
 RT: 6.07 min Scan# 900
 Delta R.T. 0.00 min
 Lab File: VX002670.D
 Acq: 17 Jun 2018 01:37

Tgt Ion	Resp	Lower	Upper
65	100		
67	52.0	0.0	102.6

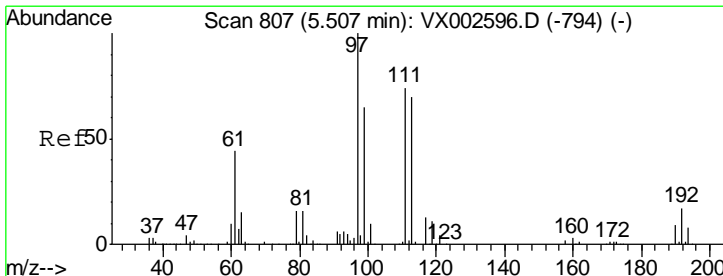
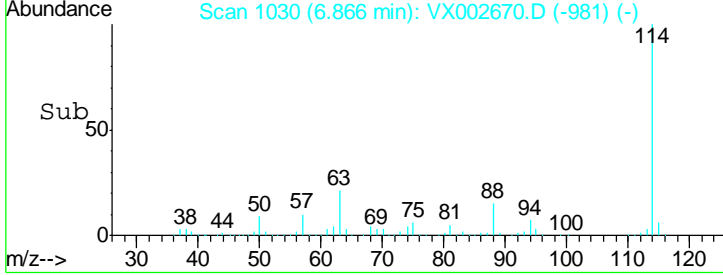
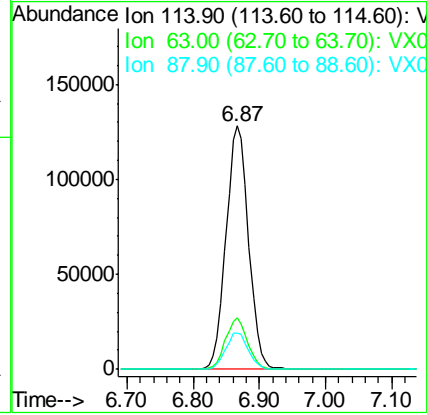
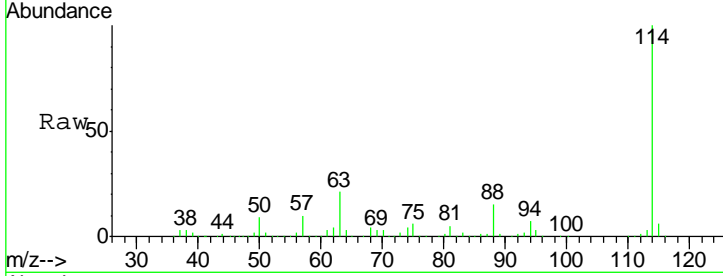




#34
 1,4-Difluorobenzene
 Concen: 50.000 ug/l
 RT: 6.87 min Scan# 1030
 Delta R.T. 0.00 min
 Lab File: VX002670.D
 Acq: 17 Jun 2018 01:37

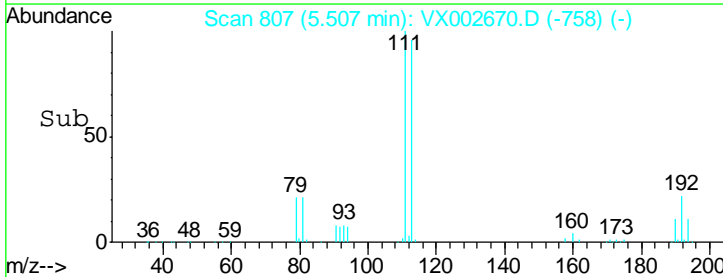
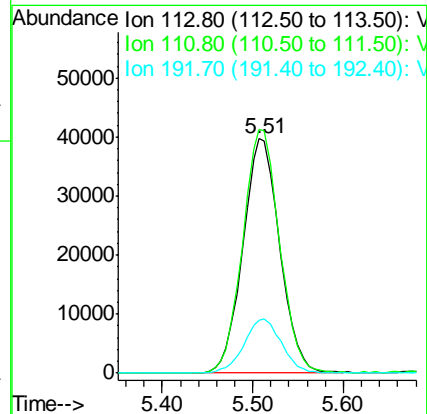
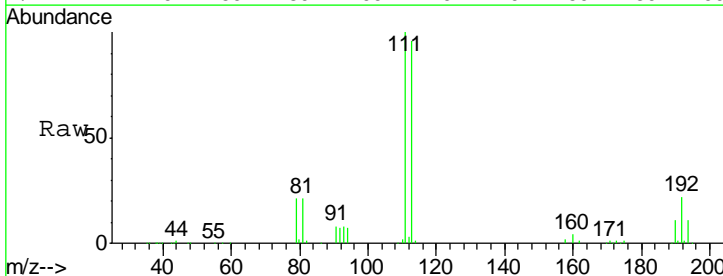
Instrument :
 MSVOA_X
 ClientSampled :
 DUP-061318

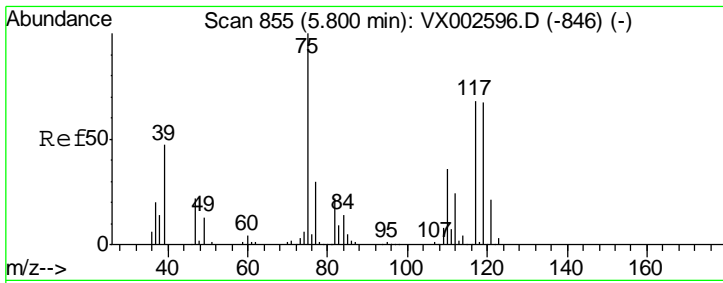
Tgt Ion	Resp	Lower	Upper
114	302002		
63	21.0	0.0	41.4
88	15.1	0.0	30.0



#35
 Dibromofluoromethane
 Concen: 46.306 ug/l
 RT: 5.51 min Scan# 807
 Delta R.T. 0.00 min
 Lab File: VX002670.D
 Acq: 17 Jun 2018 01:37

Tgt Ion	Resp	Lower	Upper
113	111611		
111	103.9	81.4	122.0
192	23.4	19.1	28.7

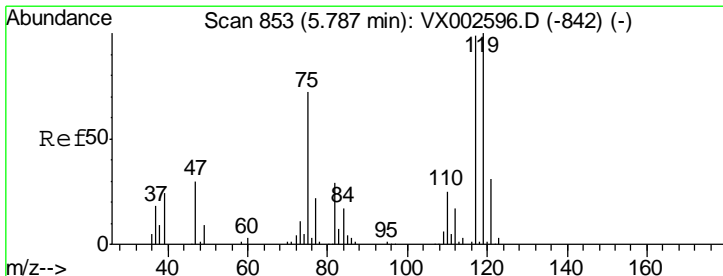
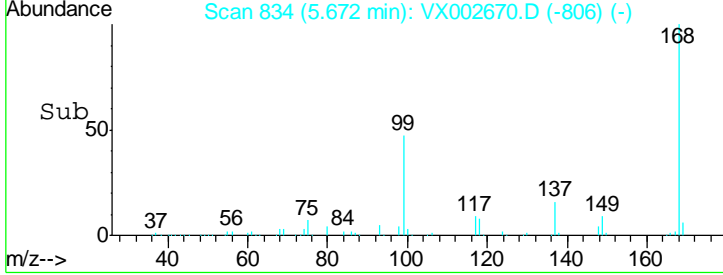
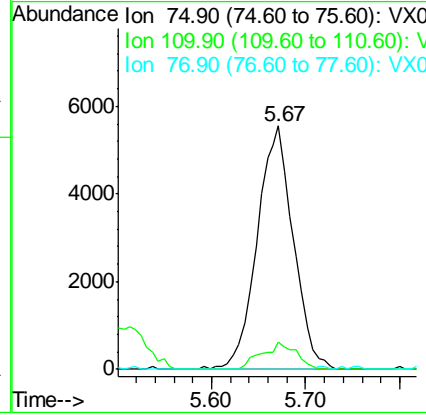
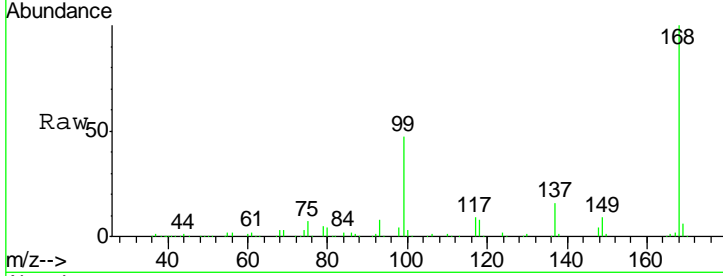




#36
 1,1-Dichloropropene
 Concen: 4.637 ug/l
 RT: 5.67 min Scan# 834
 Delta R.T. -0.13 min
 Lab File: VX002670.D
 Acq: 17 Jun 2018 01:37

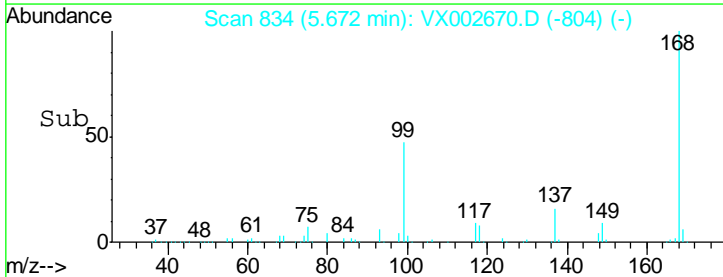
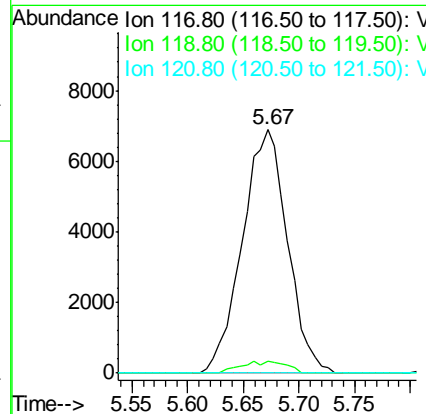
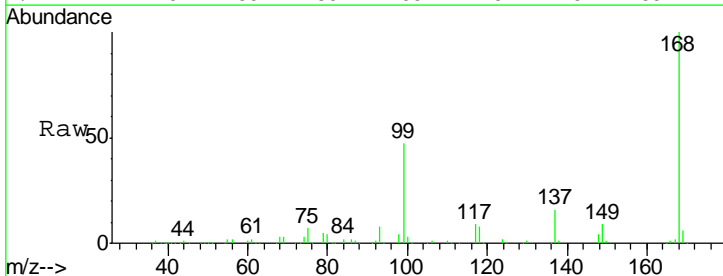
Instrument :
 MSVOA_X
ClientSampled :
 DUP-061318

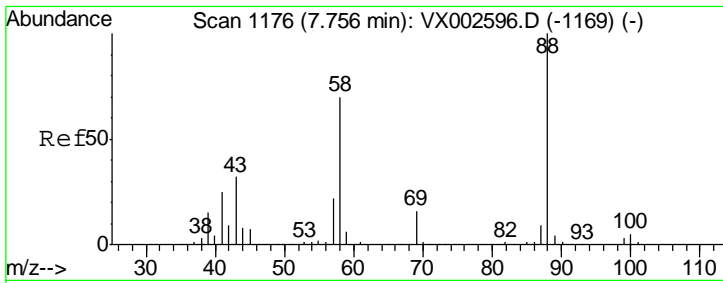
Tgt Ion	Resp	Lower	Upper
75	14874		
110	10.5	18.1	54.4#
77	0.0	24.3	36.5#



#38
 Carbon Tetrachloride
 Concen: 6.079 ug/l
 RT: 5.67 min Scan# 834
 Delta R.T. -0.12 min
 Lab File: VX002670.D
 Acq: 17 Jun 2018 01:37

Tgt Ion	Resp	Lower	Upper
117	19415		
119	4.7	77.4	116.0#
121	0.0	24.4	36.6#

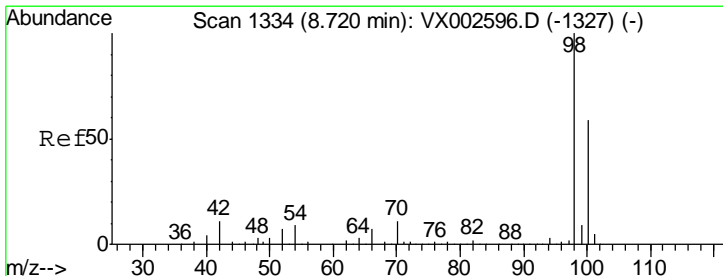
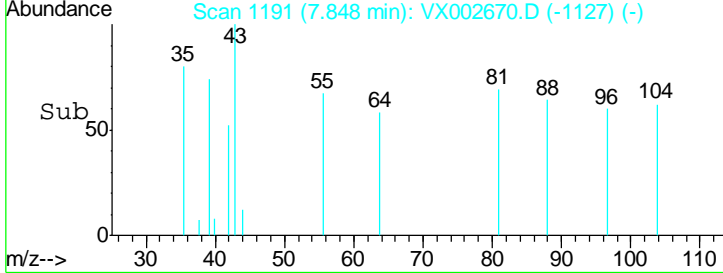
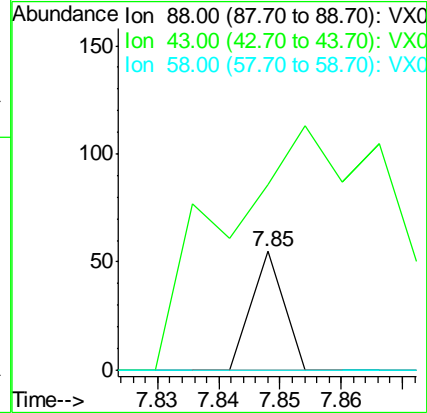
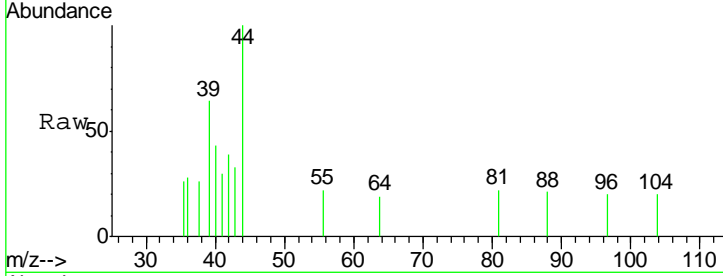




#49
 1,4-Dioxane
 Concen: 0.344 ug/l
 RT: 7.85 min Scan# 1191
 Delta R.T. 0.09 min
 Lab File: VX002670.D
 Acq: 17 Jun 2018 01:37

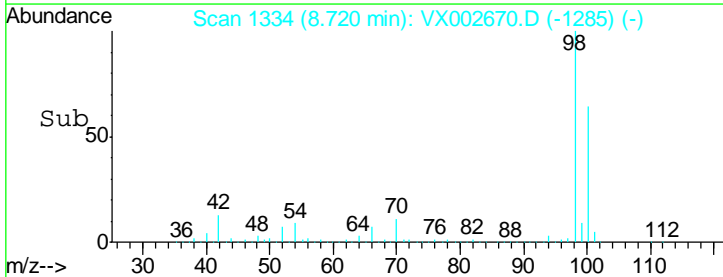
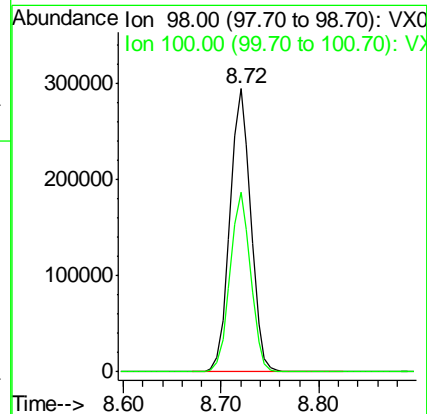
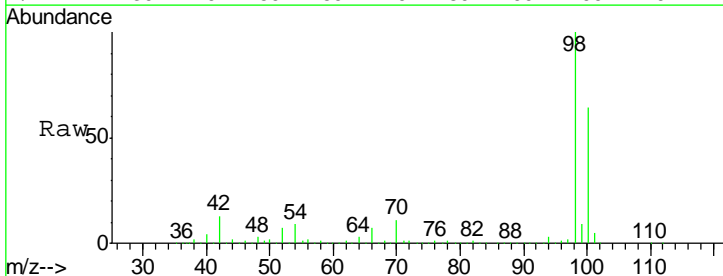
Instrument :
 MSVOA_X
 ClientSampled :
 DUP-061318

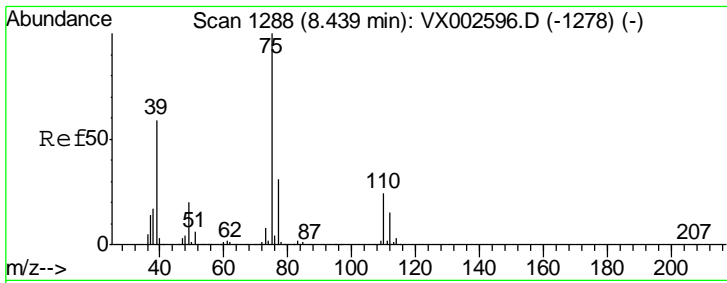
Tgt Ion	Resp	Lower	Upper
88	100		
43	1060.0	29.8	44.6#
58	0.0	57.1	85.7#



#50
 Toluene-d8
 Concen: 47.782 ug/l
 RT: 8.72 min Scan# 1334
 Delta R.T. 0.00 min
 Lab File: VX002670.D
 Acq: 17 Jun 2018 01:37

Tgt Ion	Resp	Lower	Upper
98	100		
100	62.8	50.9	76.3

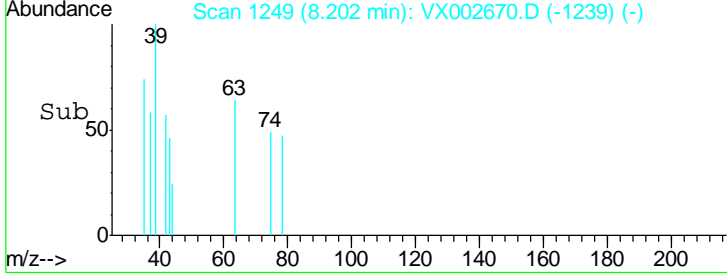
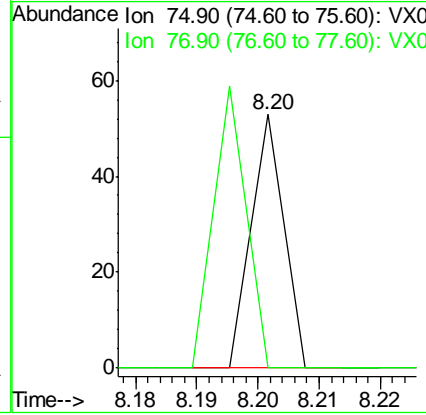
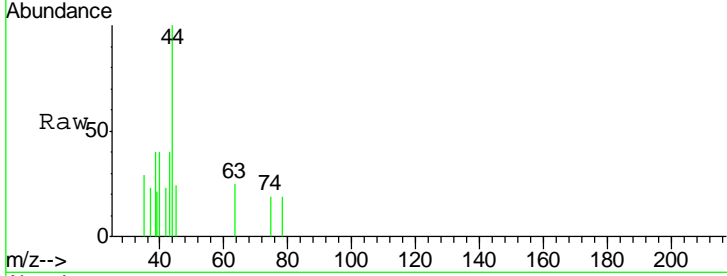




#53
 t-1,3-Dichloropropene
 Concen: 2.398 ug/l
 RT: 8.20 min Scan# 1249
 Delta R.T. -0.24 min
 Lab File: VX002670.D
 Acq: 17 Jun 2018 01:37

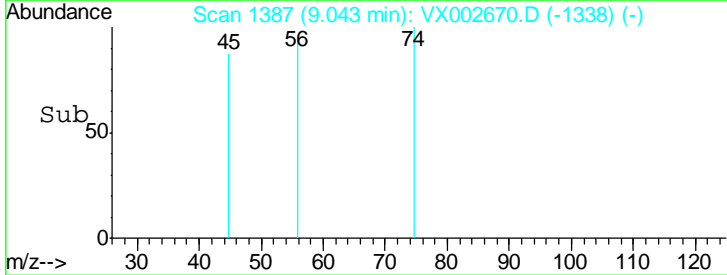
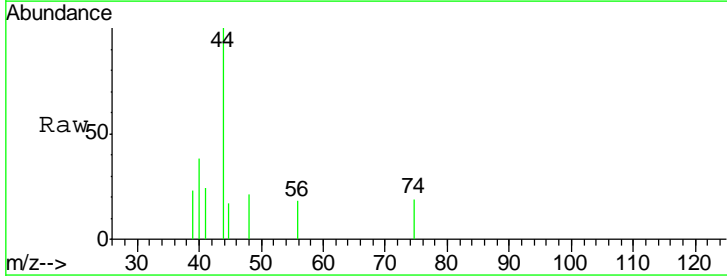
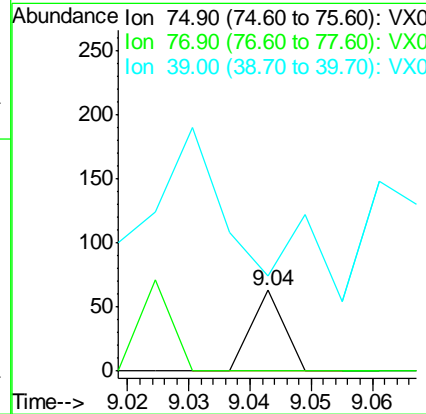
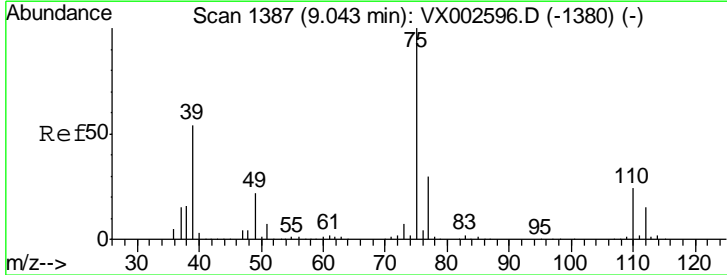
Instrument :
 MSVOA_X
ClientSampled :
 DUP-061318

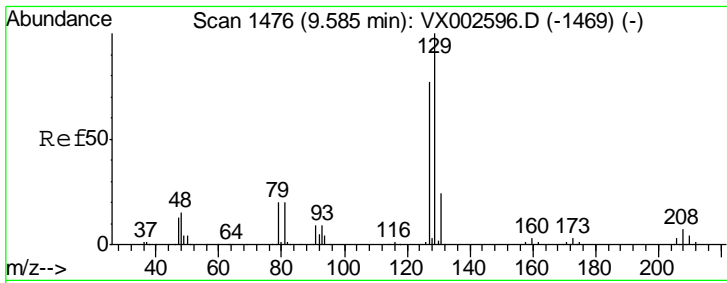
Tgt Ion	Resp	Lower	Upper
75	100		
77	0.0	25.4	38.2#



#54
 cis-1,3-Dichloropropene
 Concen: 3.218 ug/l
 RT: 9.04 min Scan# 1387
 Delta R.T. 0.00 min
 Lab File: VX002670.D
 Acq: 17 Jun 2018 01:37

Tgt Ion	Resp	Lower	Upper
75	100		
77	0.0	24.8	37.2#
39	31.7	42.4	63.6#

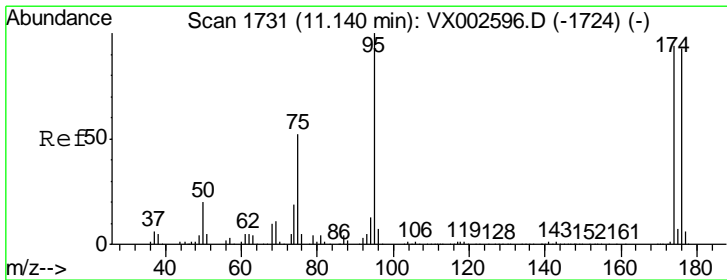
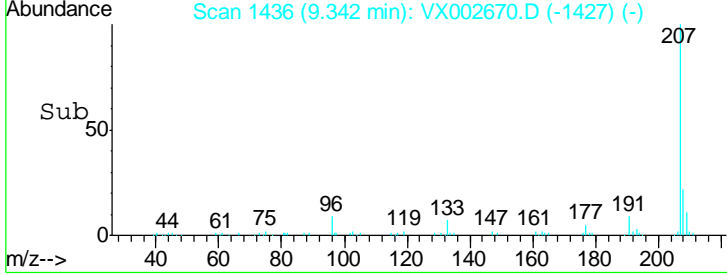
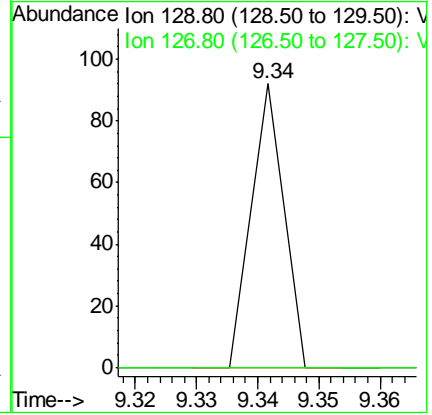
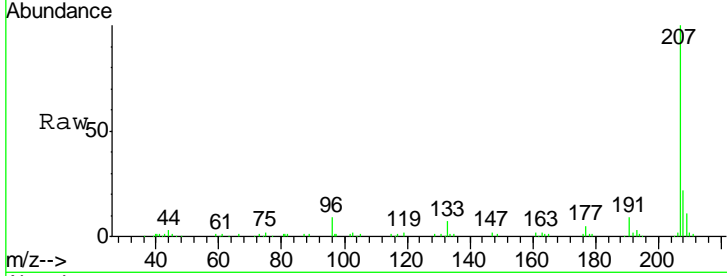




#60
 Dibromochloromethane
 Concen: 3.772 ug/l
 RT: 9.34 min Scan# 1436
 Delta R.T. -0.24 min
 Lab File: VX002670.D
 Acq: 17 Jun 2018 01:37

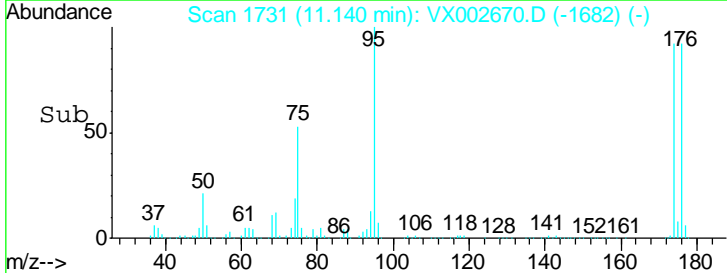
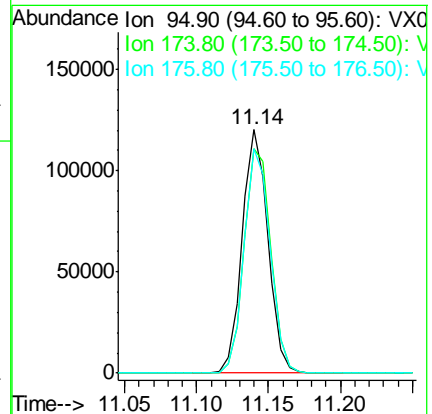
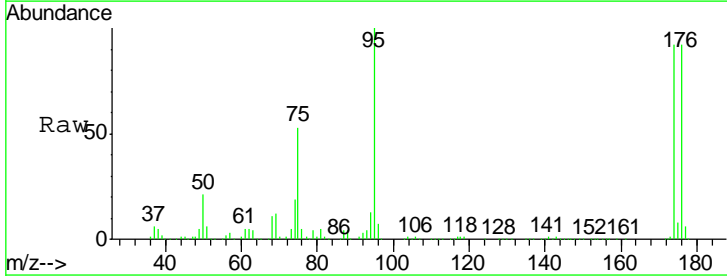
Instrument :
 MSVOA_X
 ClientSampled :
 DUP-061318

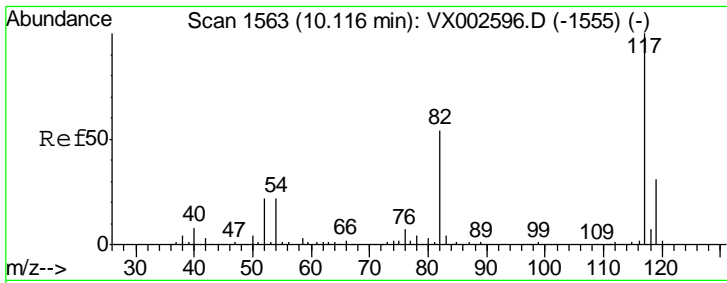
Tgt Ion	Resp	Lower	Upper
129	100		
127	0.0	38.5	115.3#



#62
 4-Bromofluorobenzene
 Concen: 43.068 ug/l
 RT: 11.14 min Scan# 1731
 Delta R.T. 0.00 min
 Lab File: VX002670.D
 Acq: 17 Jun 2018 01:37

Tgt Ion	Resp	Lower	Upper
95	100		
174	95.5	0.0	187.4
176	93.5	0.0	181.0

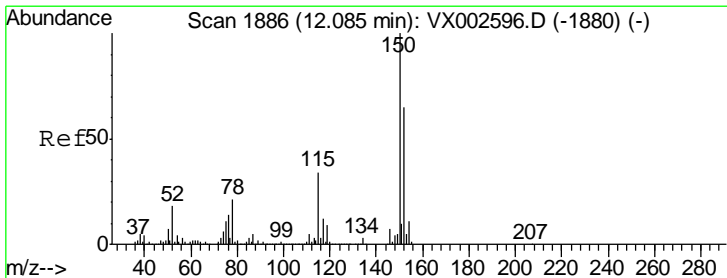
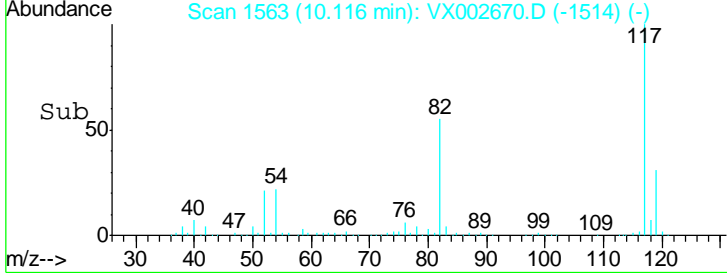
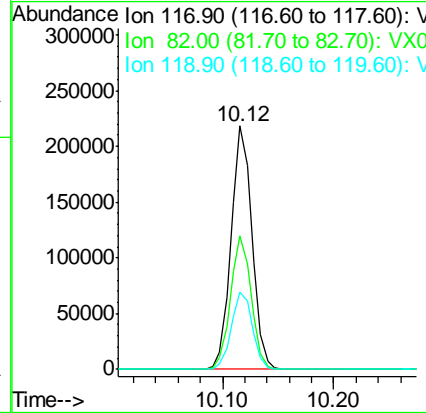
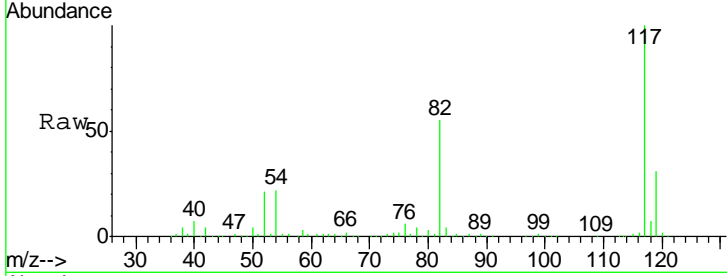




#63
 Chlorobenzene-d5
 Concen: 50.000 ug/l
 RT: 10.12 min Scan# 1563
 Delta R.T. 0.00 min
 Lab File: VX002670.D
 Acq: 17 Jun 2018 01:37

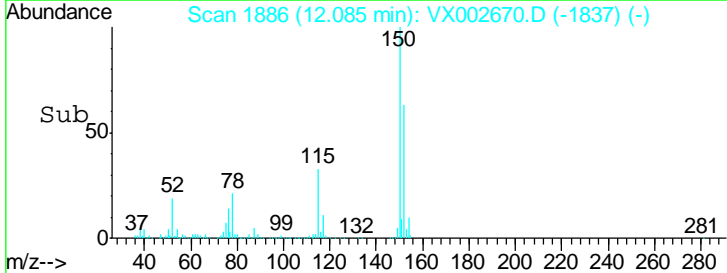
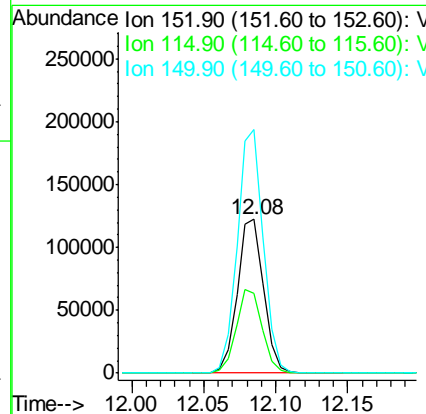
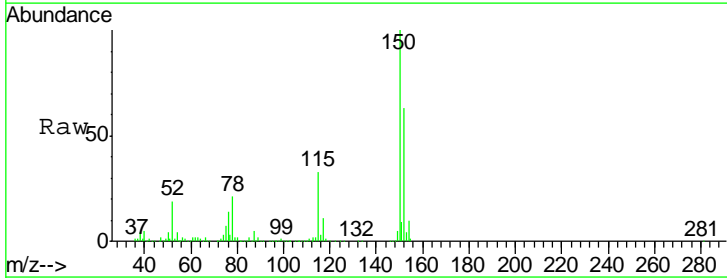
Instrument :
 MSVOA_X
 ClientSampled :
 DUP-061318

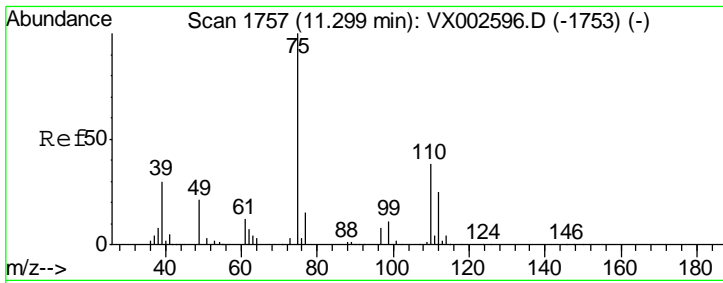
Tgt Ion	Resp	Lower	Upper
117	282635		
82	54.7	45.0	67.4
119	31.5	25.8	38.6



#72
 1,4-Dichlorobenzene-d4
 Concen: 50.000 ug/l
 RT: 12.08 min Scan# 1886
 Delta R.T. 0.00 min
 Lab File: VX002670.D
 Acq: 17 Jun 2018 01:37

Tgt Ion	Resp	Lower	Upper
152	155903		
115	53.8	40.1	120.2
150	156.6	0.0	347.2

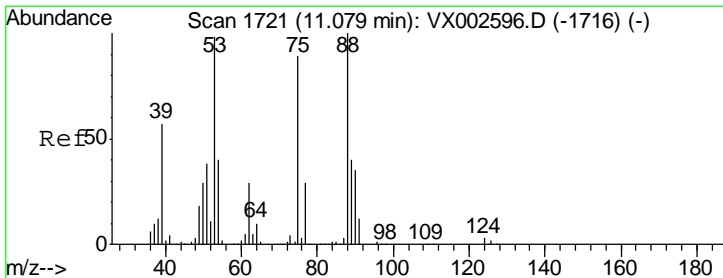
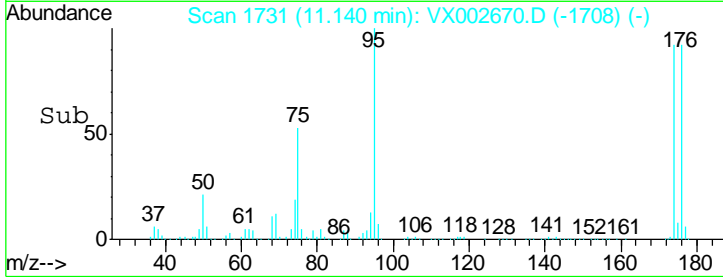
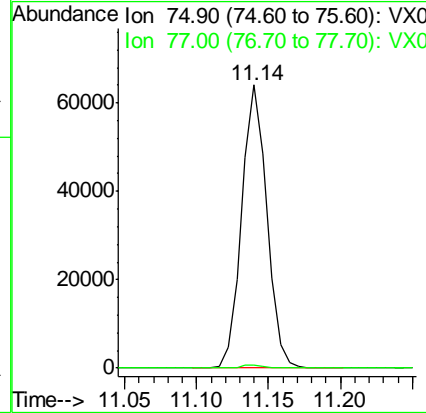
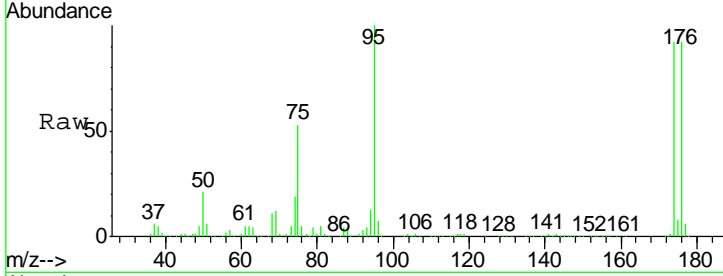




#76
 1,2,3-Trichloropropane
 Concen: 26.585 ug/l
 RT: 11.14 min Scan# 1731
 Delta R.T. -0.16 min
 Lab File: VX002670.D
 Acq: 17 Jun 2018 01:37

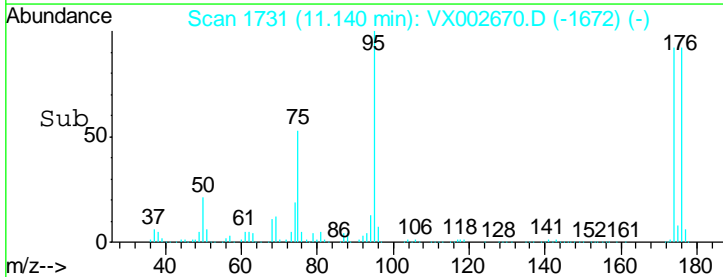
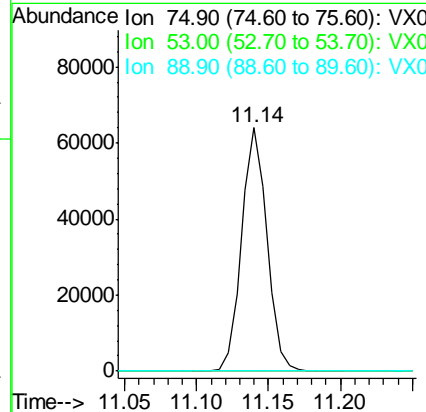
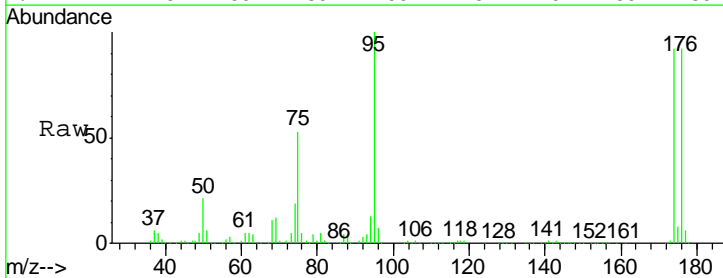
Instrument :
 MSVOA_X
 ClientSampled :
 DUP-061318

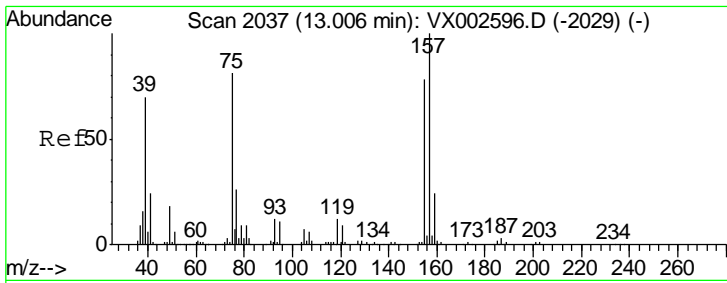
Tgt Ion: 75 Resp: 78210
 Ion Ratio Lower Upper
 75 100
 77 1.1 22.8 68.3#



#81
 trans-1,4-Dichloro-2-butene
 Concen: 82.132 ug/l
 RT: 11.14 min Scan# 1731
 Delta R.T. 0.06 min
 Lab File: VX002670.D
 Acq: 17 Jun 2018 01:37

Tgt Ion: 75 Resp: 78210
 Ion Ratio Lower Upper
 75 100
 53 0.1 86.8 130.2#
 89 0.1 38.2 57.2#





#92
 1,2-Dibromo-3-Chloropropane
 Concen: 0.560 ug/l
 RT: 12.82 min Scan# 2006
 Delta R.T. -0.19 min
 Lab File: VX002670.D
 Acq: 17 Jun 2018 01:37

Instrument :
 MSVOA_X
 ClientSampleId :
 DUP-061318

Tot Ion	75	Resp	361
Ion	Ratio	Lower	Upper
75	100		
155	7.2	45.8	137.4#
157	0.0	60.1	180.3#

