

Data Path : Z:\VOASRV\HPCHEM1\MSVOA X\DATA\WX062018\  
 Data File : VX002777.D  
 Acq On : 21 Jun 2018 07:50  
 Operator : JC/MD  
 Sample : PB110408ZHE#16  
 Misc : 5.0mL/MSVOA X/WATER  
 ALS Vial : 48 Sample Multiplier: 1

Instrument :  
 MSVOA\_X  
 ClientSampled :

Quant Time: Jun 21 08:11:58 2018  
 Quant Method : Z:\VOASRV\HPCHEM1\MSVOA\_X\METHOD\82X061518W.M  
 Quant Title : SW846 8260  
 QLast Update : Sat Jun 16 01:37:33 2018  
 Response via : Initial Calibration

Internal Standards	R.T.	QIon	Response	Conc	Units	Dev(Min)
1) Pentafluorobenzene	5.67	168	240880	50.00	ug/l	0.00
34) 1,4-Difluorobenzene	6.87	114	342845	50.00	ug/l	0.00
63) Chlorobenzene-d5	10.12	117	318597	50.00	ug/l	0.00
72) 1,4-Dichlorobenzene-d4	12.09	152	182065	50.00	ug/l	0.00

## System Monitoring Compounds

33) 1,2-Dichloroethane-d4	6.07	65	166149	45.39	ug/l	0.00
Spiked Amount	50.000		Recovery	=	90.78%	
35) Dibromofluoromethane	5.51	113	132523	48.43	ug/l	0.00
Spiked Amount	50.000		Recovery	=	96.86%	
50) Toluene-d8	8.72	98	489649	47.13	ug/l	0.00
Spiked Amount	50.000		Recovery	=	94.26%	
62) 4-Bromofluorobenzene	11.14	95	169822	43.14	ug/l	0.00
Spiked Amount	50.000		Recovery	=	86.28%	

## Target Compounds

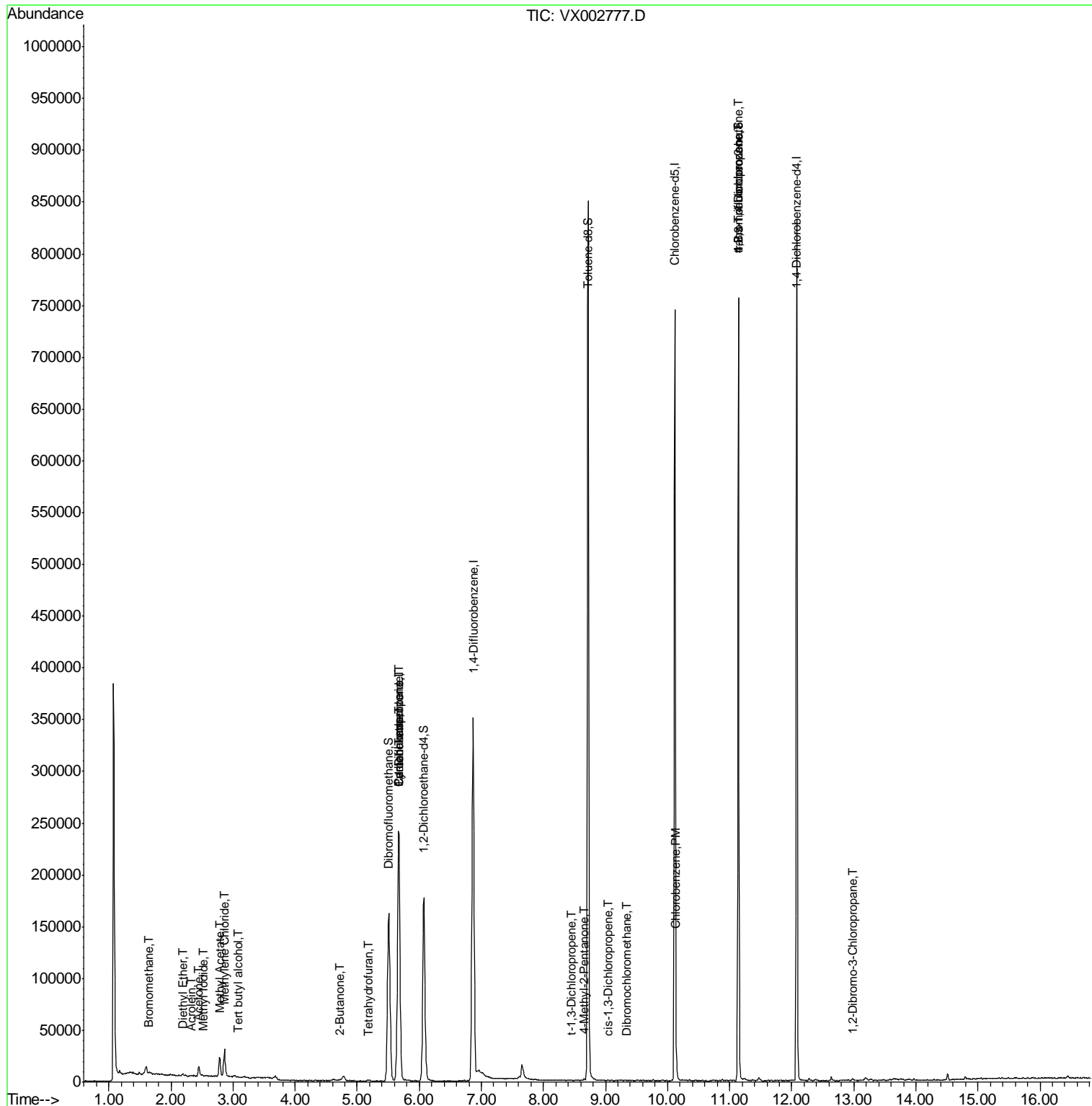
						Qvalue
5) Bromomethane	1.65	94	915	0.48	ug/l	# 70
8) Diethyl Ether	2.19	74	579	0.30	ug/l	91
10) Methyl Iodide	2.52	142	476	5.29	ug/l	# 93
11) Tert butyl alcohol	3.07	59	251	0.33	ug/l	# 1
13) Acrolein	2.32	56	343	7.80	ug/l	89
16) Acetone	2.45	43	11132	6.89	ug/l	95
18) Methyl Acetate	2.78	43	23657	5.50	ug/l	98
20) Methylene Chloride	2.86	84	11940	3.61	ug/l	98
25) 2-Butanone	4.71	43	2336	1.10	ug/l	94
29) Tetrahydrofuran	5.18	42	1149	0.83	ug/l	# 88
31) Cyclohexane	5.67	56	4965	1.15	ug/l	# 17
36) 1,1-Dichloropropene	5.67	75	16631	4.57	ug/l	# 51
38) Carbon Tetrachloride	5.67	117	22460	6.19	ug/l	# 16
51) 4-Methyl-2-Pentanone	8.65	43	1122	0.26	ug/l	# 84
53) t-1,3-Dichloropropene	8.45	75	20	2.40	ug/l	# 43
54) cis-1,3-Dichloropropene	9.04	75	24	3.22	ug/l	# 22
60) Dibromochloromethane	9.34	129	58	3.78	ug/l	# 11
65) Chlorobenzene	10.14	112	3616	0.46	ug/l	97
76) 1,2,3-Trichloropropane	11.14	75	90915	26.46	ug/l	# 33
81) trans-1,4-Dichloro-2-buten	11.14	75	90915	81.77	ug/l	# 7
92) 1,2-Dibromo-3-Chloropropan	12.98	75	320	0.42	ug/l	# 1

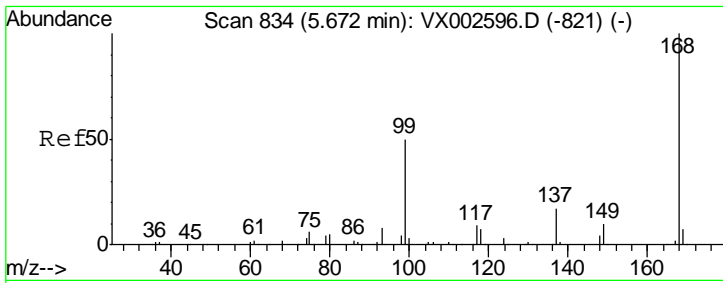
(#) = qualifier out of range (m) = manual integration (+) = signals summed

Data Path : Z:\VOASRV\HPCHEM1\MSVOA X\DATA\VX062018\  
 Data File : VX002777.D  
 Acq On : 21 Jun 2018 07:50  
 Operator : JC/MD  
 Sample : PB110408ZHE#16  
 Misc : 5.0mL/MSVOA X/WATER  
 ALS Vial : 48 Sample Multiplier: 1

Instrument :  
 MSVOA\_X  
 Client Sampled :

Quant Time: Jun 21 08:11:58 2018  
 Quant Method : Z:\VOASRV\HPCHEM1\MSVOA\_X\METHOD\82X061518W.M  
 Quant Title : SW846 8260  
 QLast Update : Sat Jun 16 01:37:33 2018  
 Response via : Initial Calibration

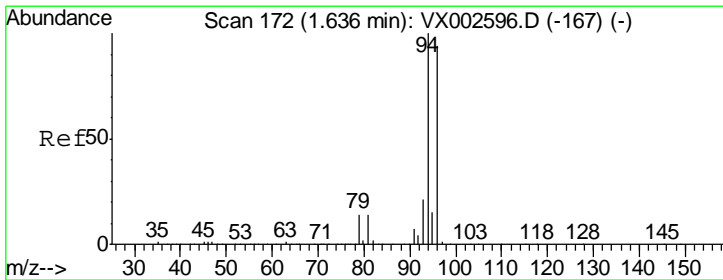
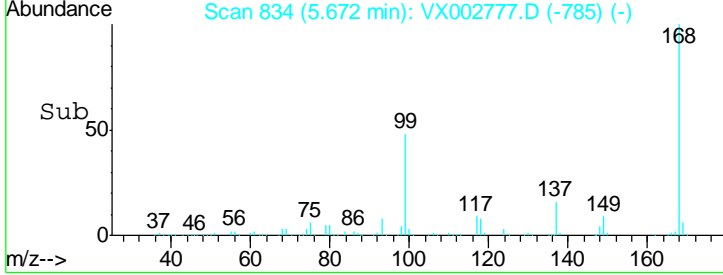
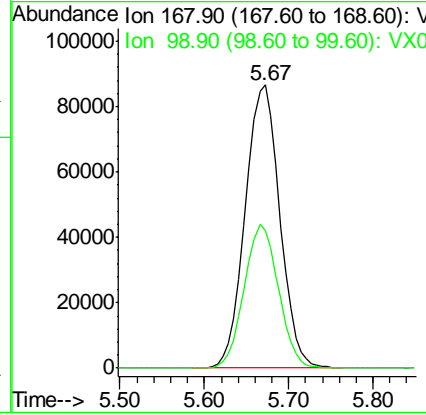
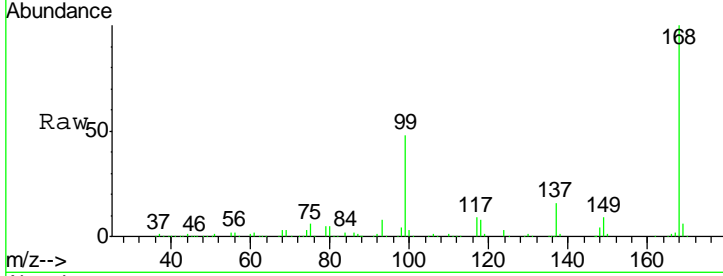




#1  
 Pentafluorobenzene  
 Concen: 50.00 ug/l  
 RT: 5.67 min Scan# 834  
 Delta R.T. 0.00 min  
 Lab File: VX002777.D  
 Acq: 21 Jun 2018 07:50

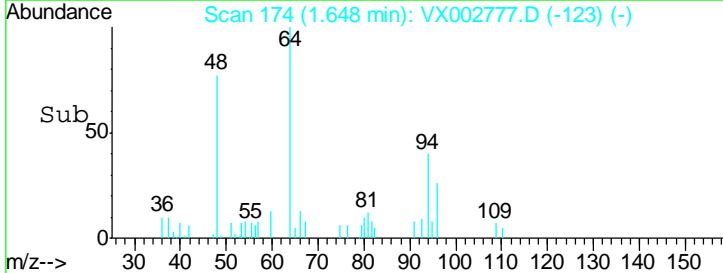
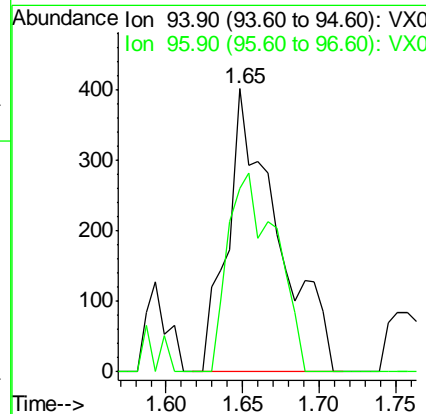
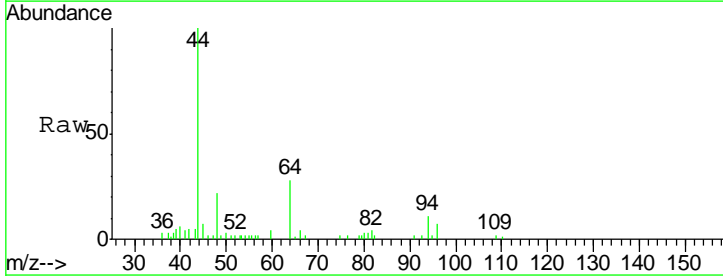
Instrument :  
 MSVOA\_X  
 ClientSampled :

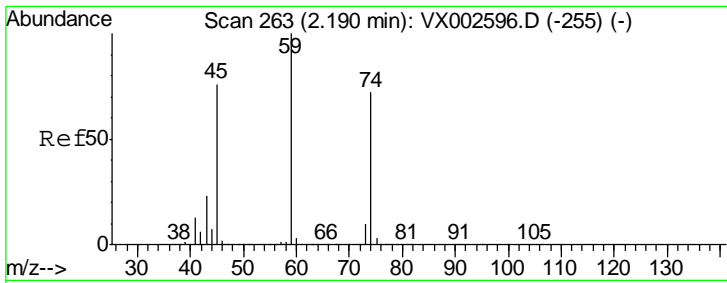
Tgt Ion	Resp	Lower	Upper
168	100		
99	48.3	39.3	58.9



#5  
 Bromomethane  
 Concen: 0.48 ug/l  
 RT: 1.65 min Scan# 174  
 Delta R.T. 0.01 min  
 Lab File: VX002777.D  
 Acq: 21 Jun 2018 07:50

Tgt Ion	Resp	Lower	Upper
94	100		
96	64.7	74.9	112.3#

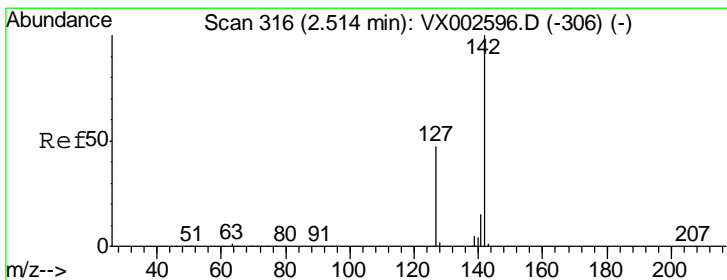
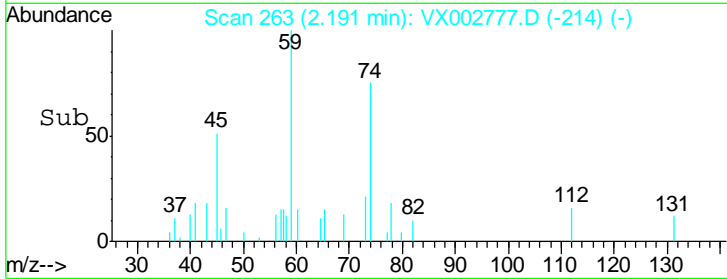
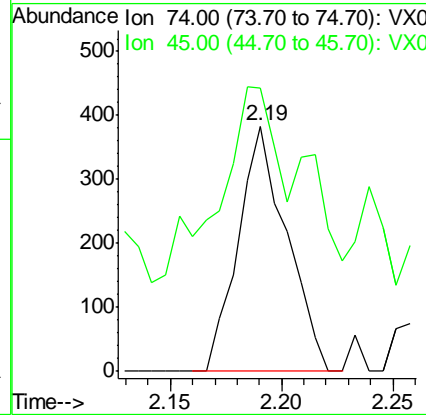
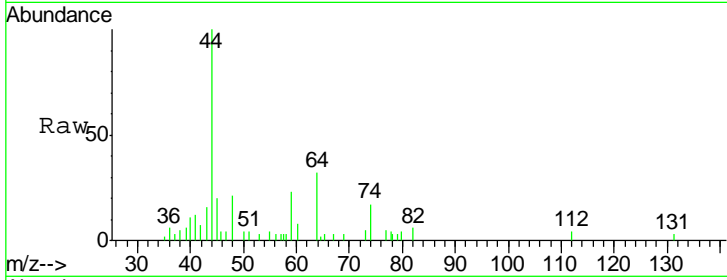




#8  
 Diethyl Ether  
 Concen: 0.30 ug/l  
 RT: 2.19 min Scan# 263  
 Delta R.T. 0.00 min  
 Lab File: VX002777.D  
 Acq: 21 Jun 2018 07:50

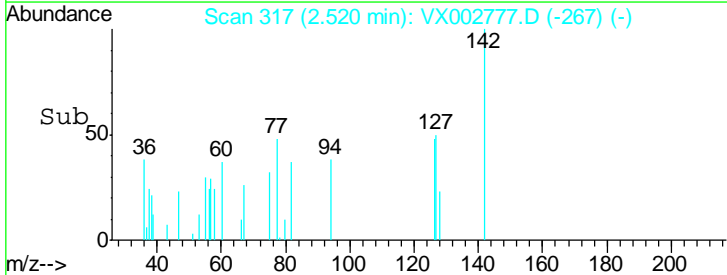
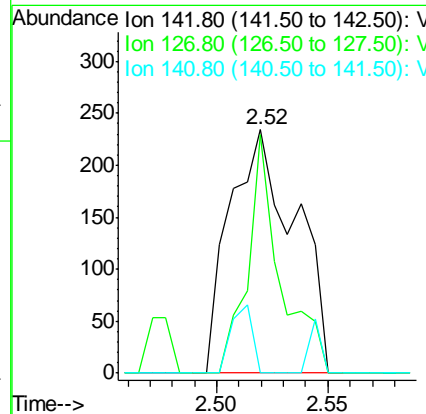
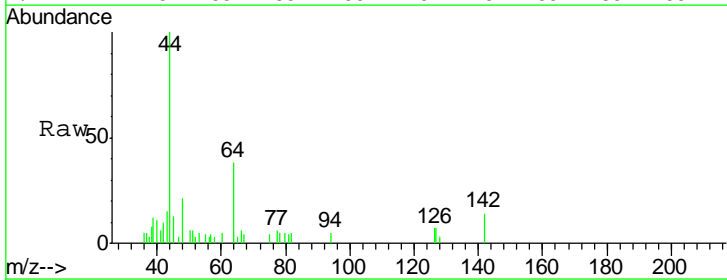
Instrument :  
 MSVOA\_X  
 ClientSampled :

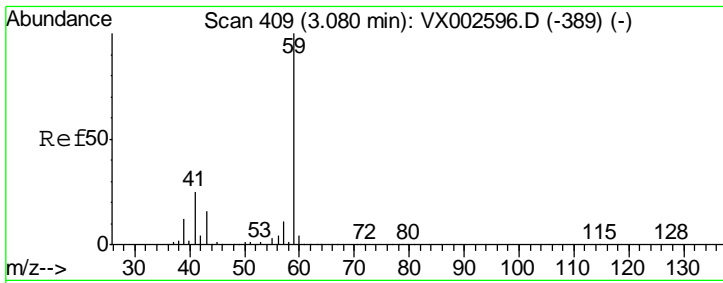
Tgt Ion	Resp	Lower	Upper
74	100		
45	97.2	53.1	159.4



#10  
 Methyl Iodide  
 Concen: 5.29 ug/l  
 RT: 2.52 min Scan# 317  
 Delta R.T. 0.01 min  
 Lab File: VX002777.D  
 Acq: 21 Jun 2018 07:50

Tgt Ion	Resp	Lower	Upper
142	100		
127	48.9	36.6	55.0
141	9.0	11.3	16.9#

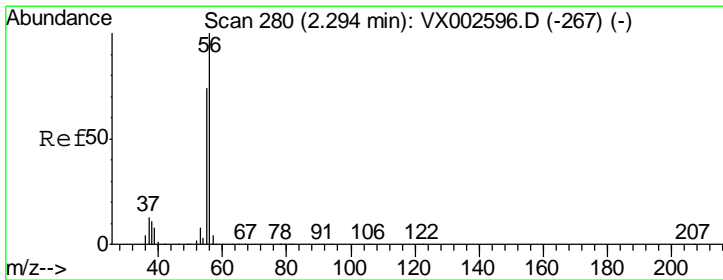
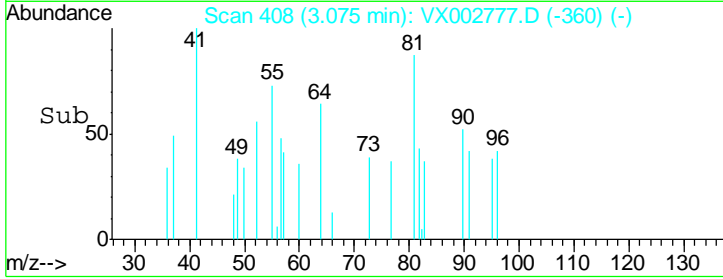
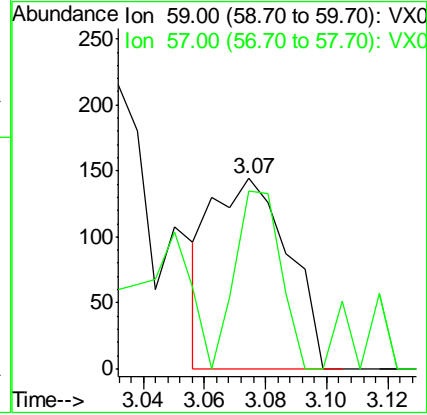
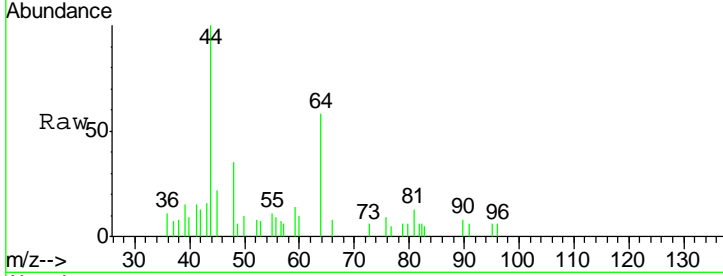




#11  
 Tert butyl alcohol  
 Concen: 0.33 ug/l  
 RT: 3.07 min Scan# 408  
 Delta R.T. -0.01 min  
 Lab File: VX002777.D  
 Acq: 21 Jun 2018 07:50

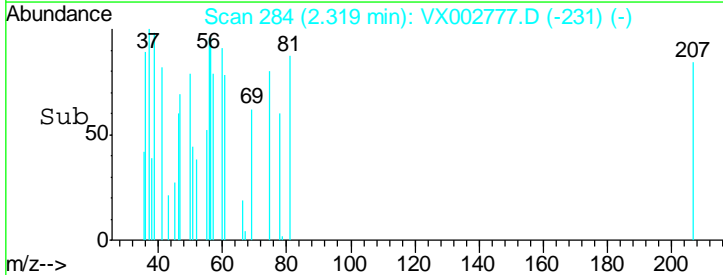
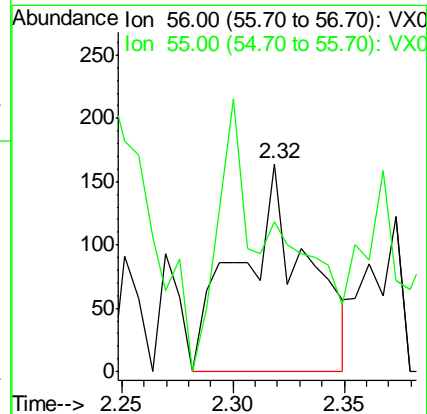
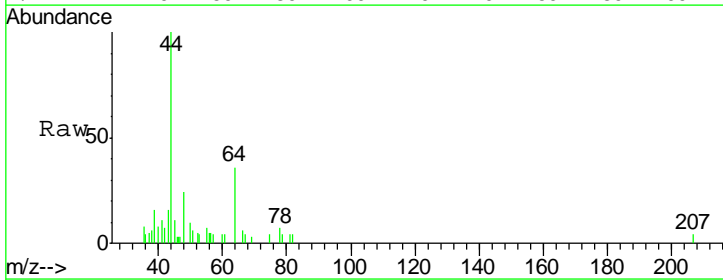
Instrument :  
 MSVOA\_X  
 ClientSampled :

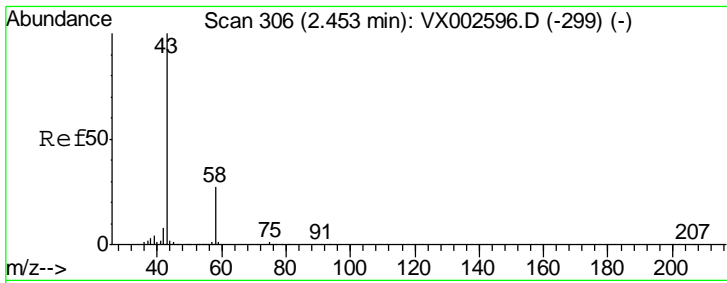
Tgt Ion: 59 Resp: 251  
 Ion Ratio Lower Upper  
 59 100  
 57 55.4 8.2 12.2#



#13  
 Acrolein  
 Concen: 7.80 ug/l  
 RT: 2.32 min Scan# 284  
 Delta R.T. 0.02 min  
 Lab File: VX002777.D  
 Acq: 21 Jun 2018 07:50

Tgt Ion: 56 Resp: 343  
 Ion Ratio Lower Upper  
 56 100  
 55 62.1 57.0 85.4

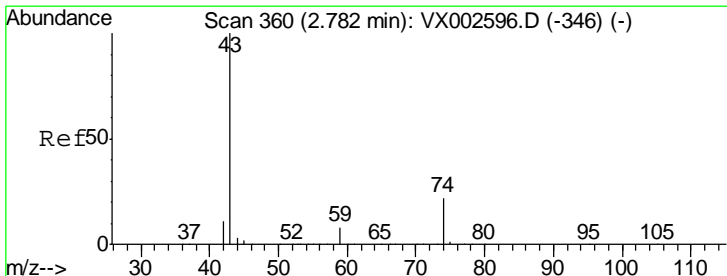
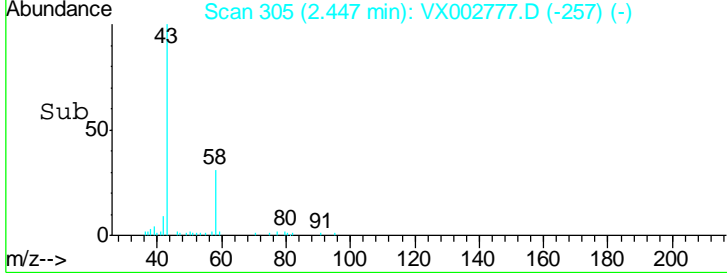
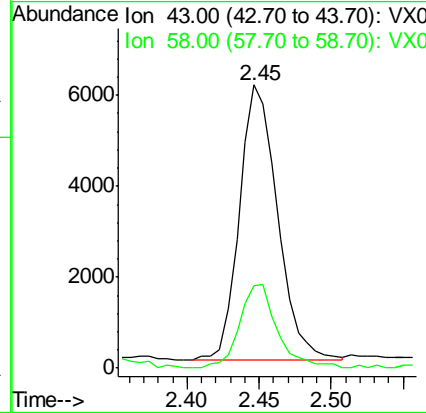
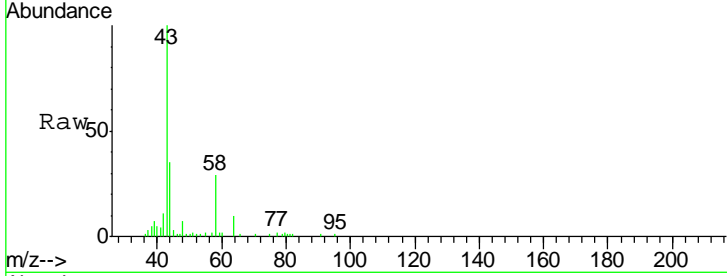




#16  
 Acetone  
 Concen: 6.89 ug/l  
 RT: 2.45 min Scan# 305  
 Delta R.T. -0.01 min  
 Lab File: VX002777.D  
 Acq: 21 Jun 2018 07:50

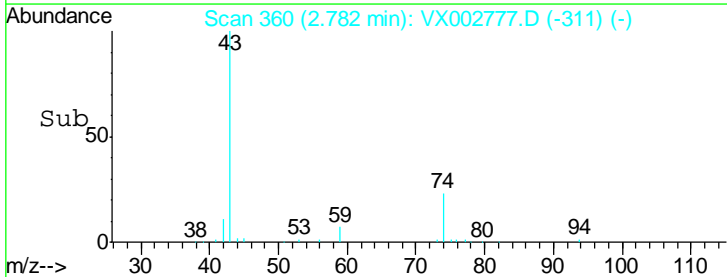
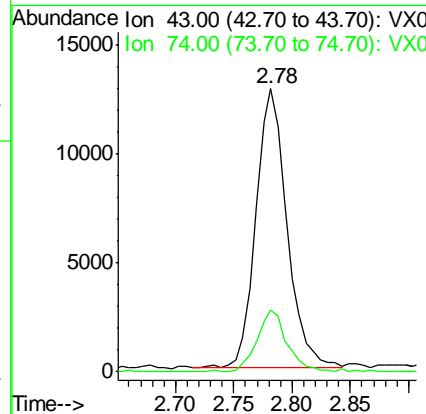
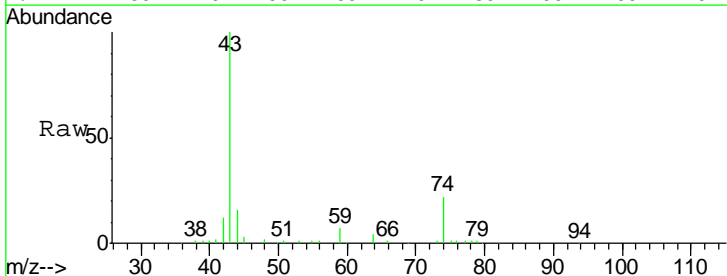
Instrument :  
 MSVOA\_X  
 ClientSampled :

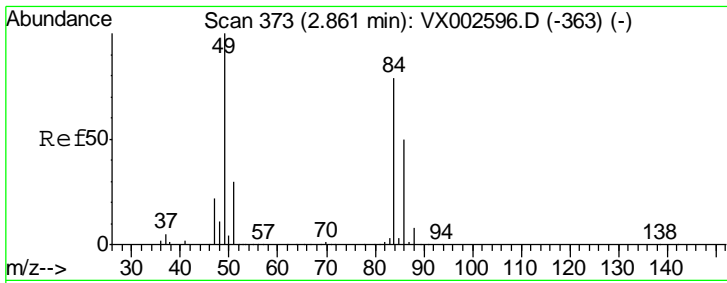
Tgt Ion	Resp	Lower	Upper
43	11132		
58	30.1	22.1	33.1



#18  
 Methyl Acetate  
 Concen: 5.50 ug/l  
 RT: 2.78 min Scan# 360  
 Delta R.T. 0.00 min  
 Lab File: VX002777.D  
 Acq: 21 Jun 2018 07:50

Tgt Ion	Resp	Lower	Upper
43	23657		
74	21.6	16.7	25.1

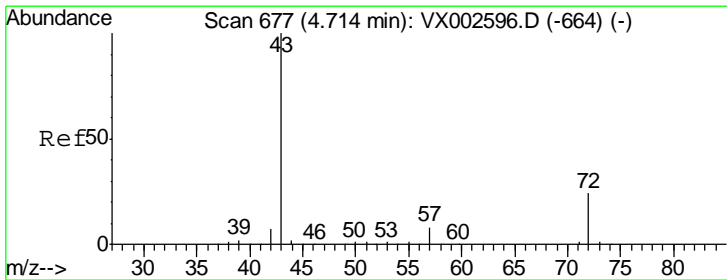
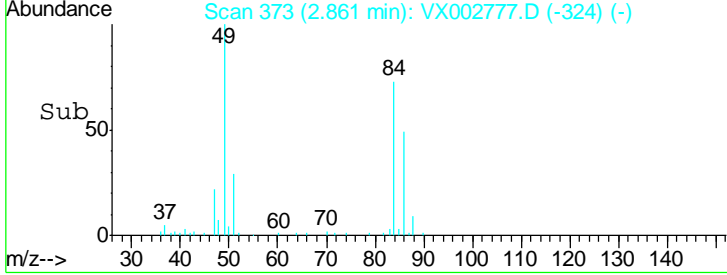
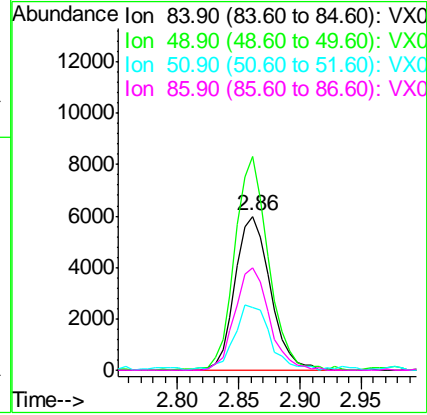
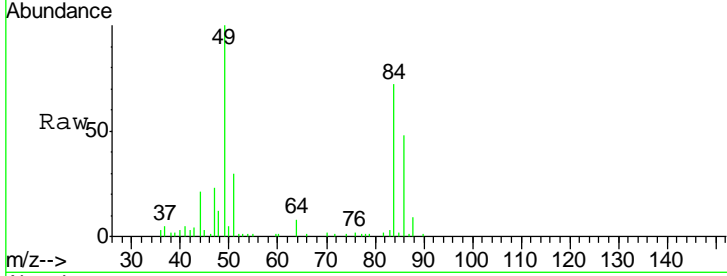




#20  
 Methylene Chloride  
 Concen: 3.61 ug/l  
 RT: 2.86 min Scan# 373  
 Delta R.T. 0.00 min  
 Lab File: VX002777.D  
 Acq: 21 Jun 2018 07:50

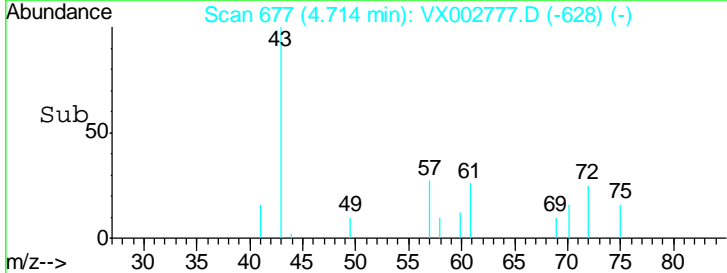
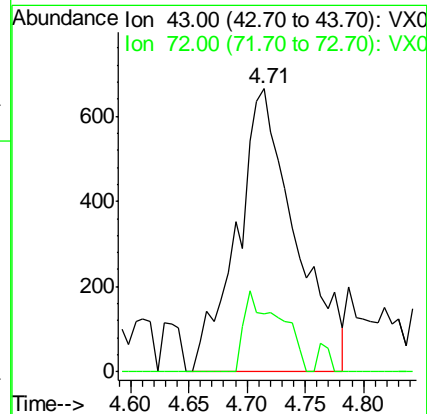
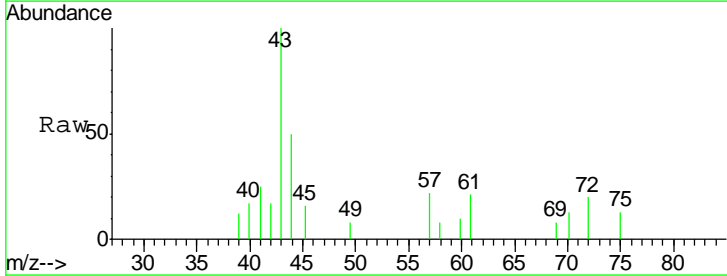
Instrument :  
 MSVOA\_X  
 ClientSampled :

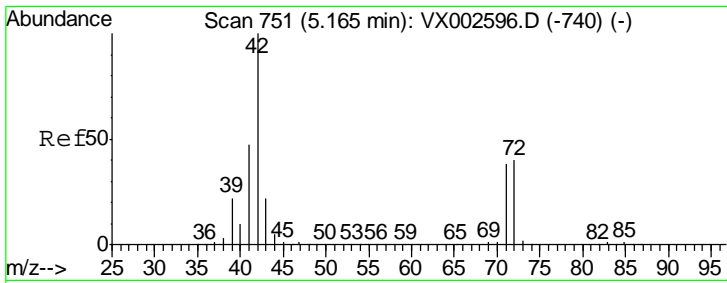
Tgt Ion	Resp	Lower	Upper
84	11940		
49	137.7	107.8	161.6
51	40.1	32.8	49.2
86	67.0	52.5	78.7



#25  
 2-Butanone  
 Concen: 1.10 ug/l  
 RT: 4.71 min Scan# 677  
 Delta R.T. 0.00 min  
 Lab File: VX002777.D  
 Acq: 21 Jun 2018 07:50

Tgt Ion	Resp	Lower	Upper
43	2336		
72	20.3	18.5	27.7

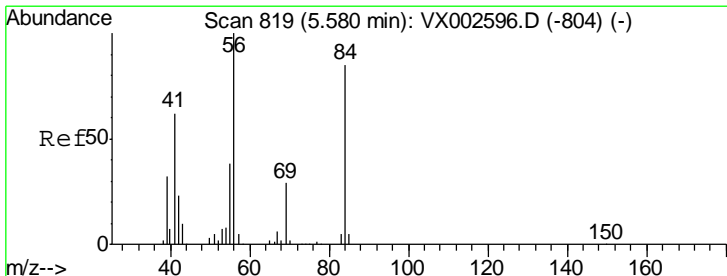
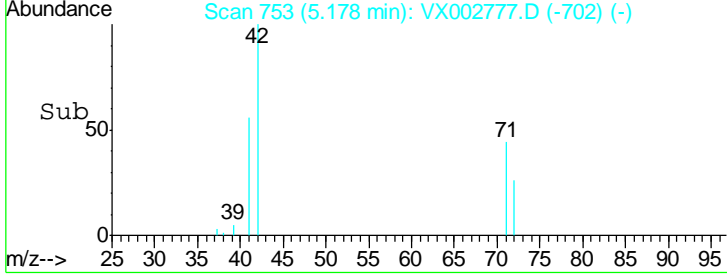
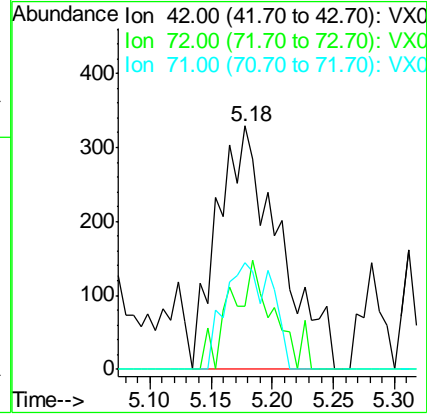
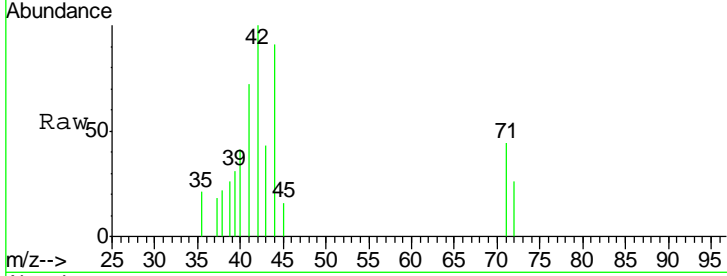




#29  
 Tetrahydrofuran  
 Concen: 0.83 ug/l  
 RT: 5.18 min Scan# 753  
 Delta R.T. 0.01 min  
 Lab File: VX002777.D  
 Acq: 21 Jun 2018 07:50

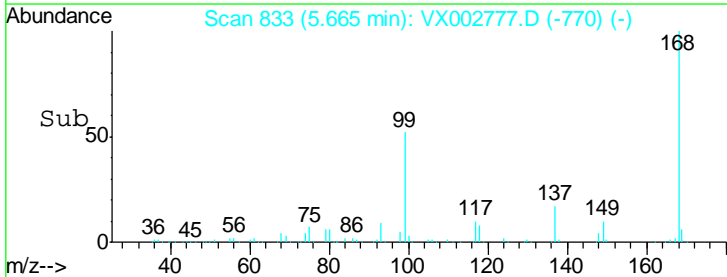
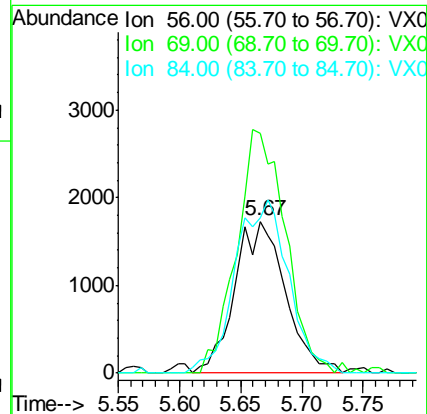
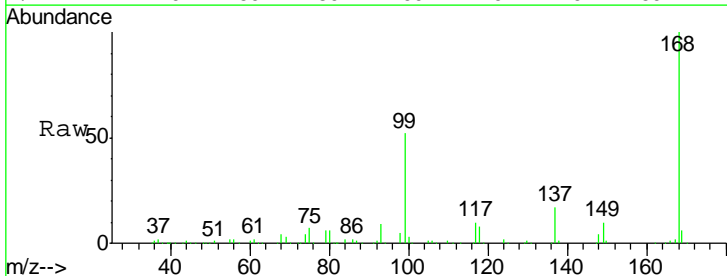
Instrument :  
 MSVOA\_X  
 ClientSampled :

Tgt Ion	Resp	Lower	Upper
42	1149		
72	29.5	32.0	48.0#
71	33.7	30.1	45.1

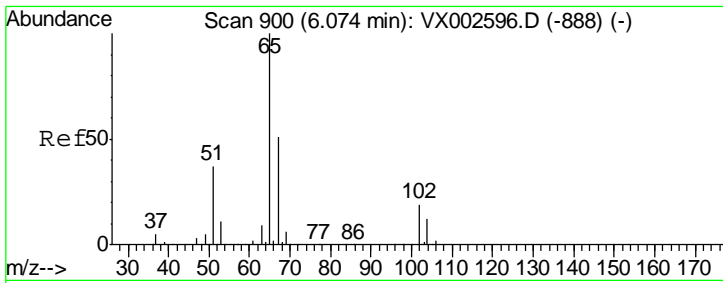


#31  
 Cyclohexane  
 Concen: 1.15 ug/l  
 RT: 5.67 min Scan# 833  
 Delta R.T. 0.09 min  
 Lab File: VX002777.D  
 Acq: 21 Jun 2018 07:50

Tgt Ion	Resp	Lower	Upper
56	4965		
69	158.4	23.7	35.5#
84	102.7	64.1	96.1#



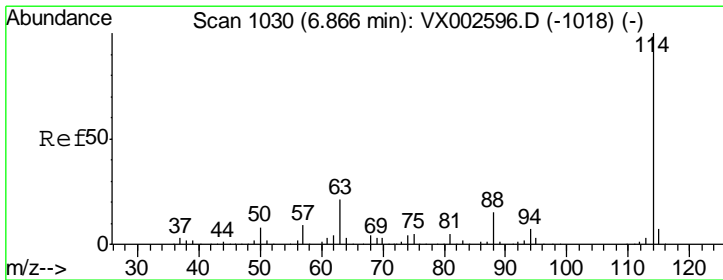
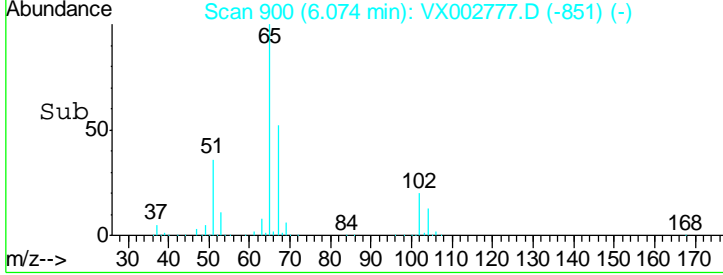
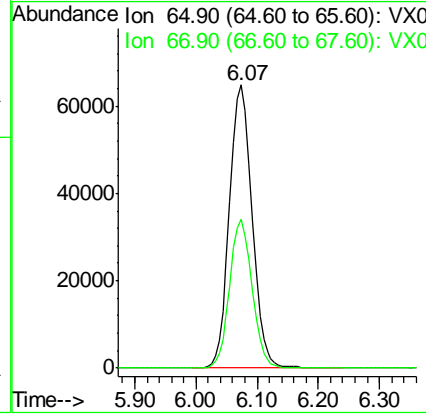
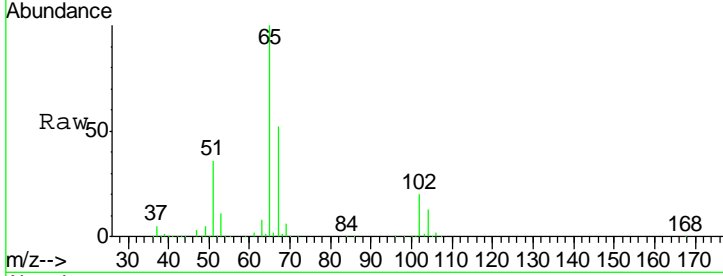




#33  
 1,2-Dichloroethane-d4  
 Concen: 45.39 ug/l  
 RT: 6.07 min Scan# 900  
 Delta R.T. 0.00 min  
 Lab File: VX002777.D  
 Acq: 21 Jun 2018 07:50

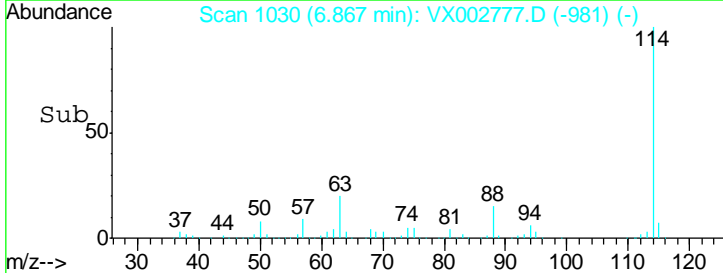
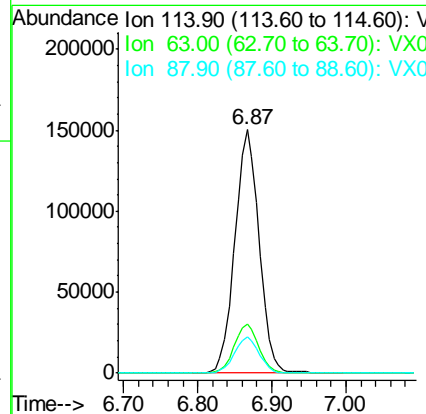
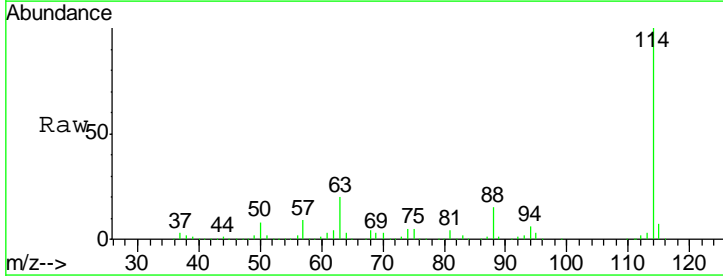
Instrument :  
 MSVOA\_X  
 ClientSampled :

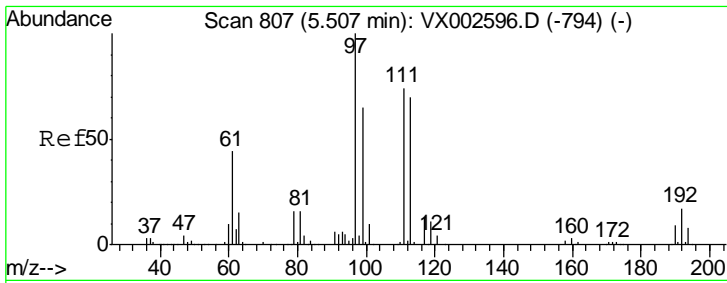
Tgt Ion	Resp	Lower	Upper
65	166149		
67	51.8	0.0	102.6



#34  
 1,4-Difluorobenzene  
 Concen: 50.00 ug/l  
 RT: 6.87 min Scan# 1030  
 Delta R.T. 0.00 min  
 Lab File: VX002777.D  
 Acq: 21 Jun 2018 07:50

Tgt Ion	Resp	Lower	Upper
114	342845		
63	20.1	0.0	41.4
88	15.0	0.0	30.0

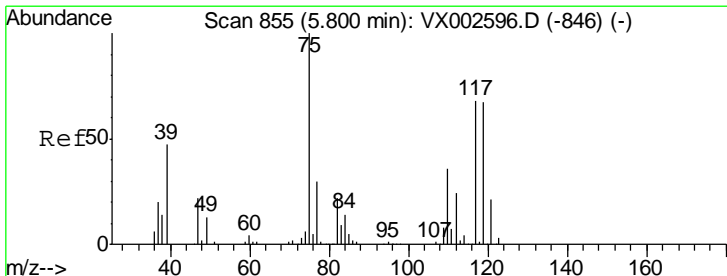
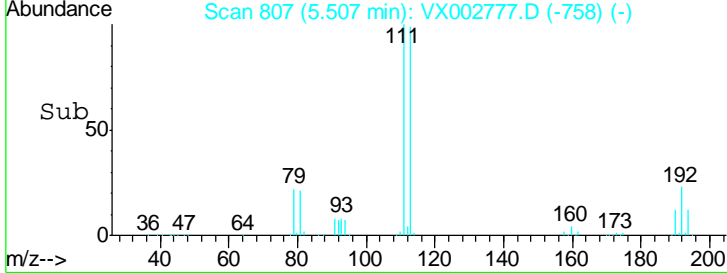
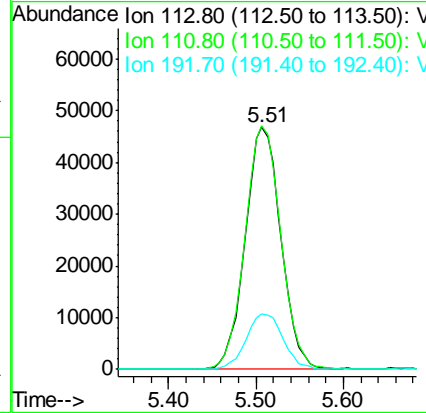
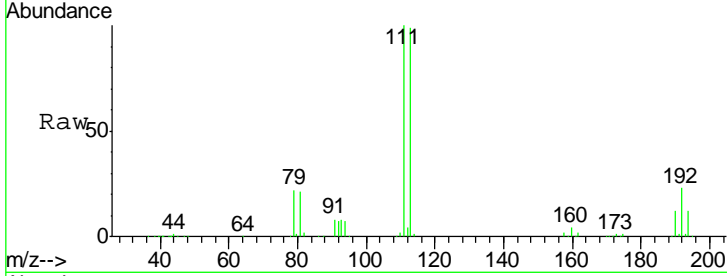




#35  
 Dibromofluoromethane  
 Concen: 48.43 ug/l  
 RT: 5.51 min Scan# 807  
 Delta R.T. 0.00 min  
 Lab File: VX002777.D  
 Acq: 21 Jun 2018 07:50

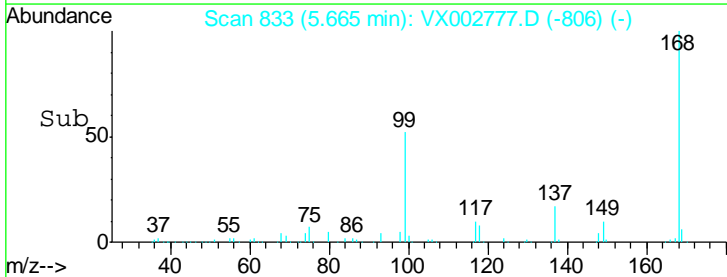
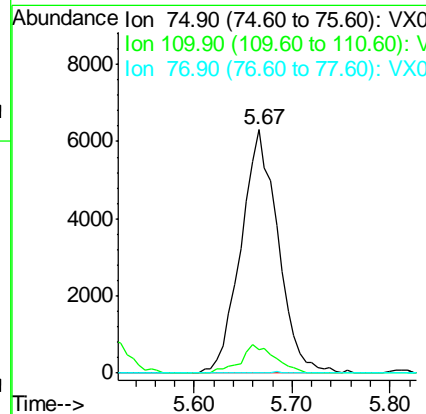
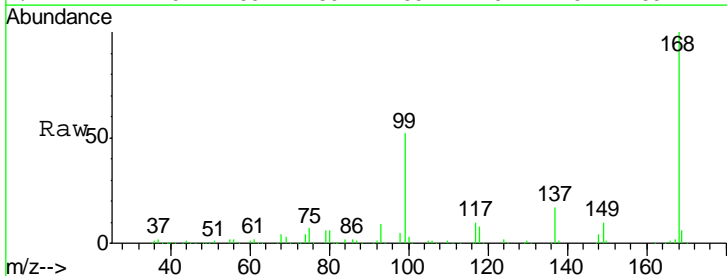
Instrument :  
 MSVOA\_X  
 ClientSampled :

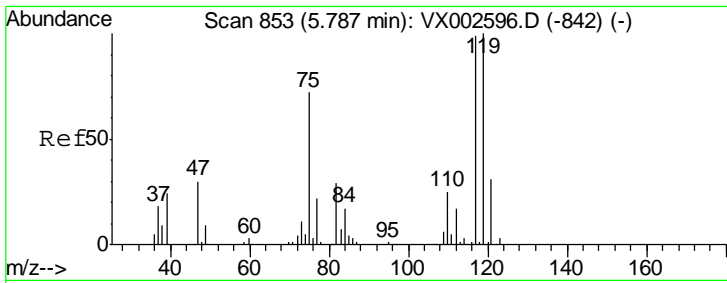
Tgt Ion	Resp	Lower	Upper
113	132523		
111	101.3	81.4	122.0
192	23.9	19.1	28.7



#36  
 1,1-Dichloropropene  
 Concen: 4.57 ug/l  
 RT: 5.67 min Scan# 833  
 Delta R.T. -0.13 min  
 Lab File: VX002777.D  
 Acq: 21 Jun 2018 07:50

Tgt Ion	Resp	Lower	Upper
75	16631		
110	10.8	18.1	54.4#
77	0.0	24.3	36.5#

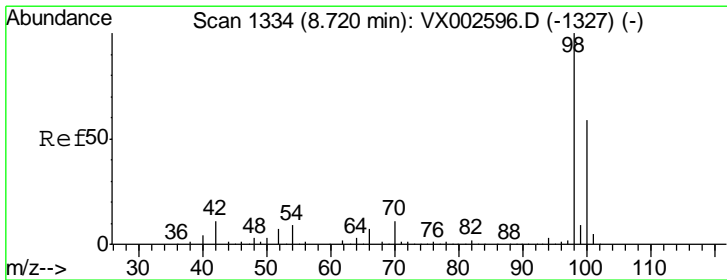
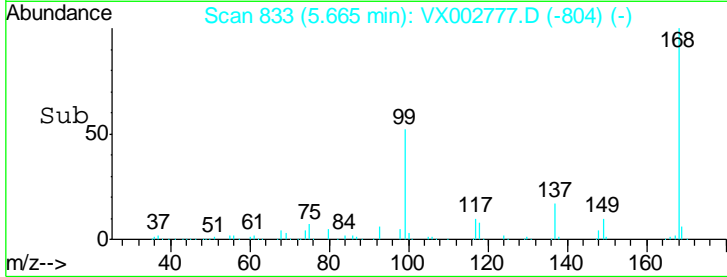
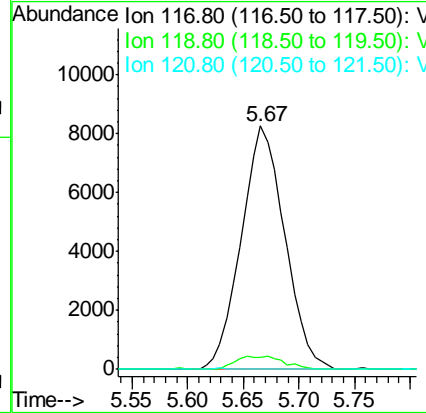
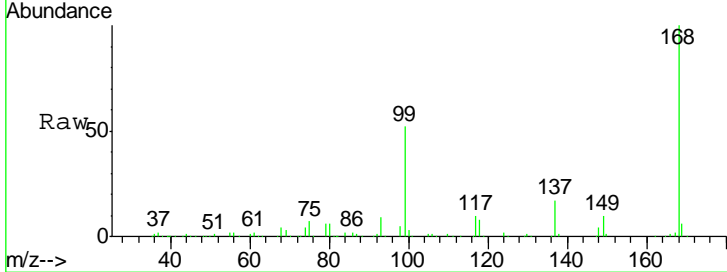




#38  
 Carbon Tetrachloride  
 Concen: 6.19 ug/l  
 RT: 5.67 min Scan# 833  
 Delta R.T. -0.12 min  
 Lab File: VX002777.D  
 Acq: 21 Jun 2018 07:50

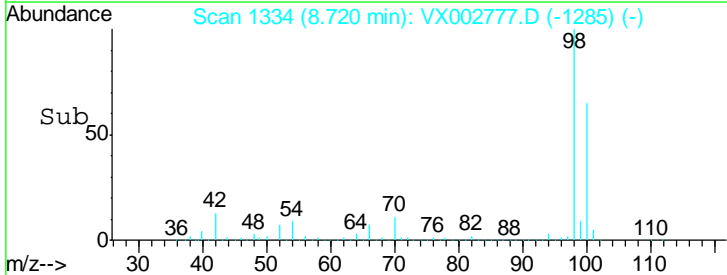
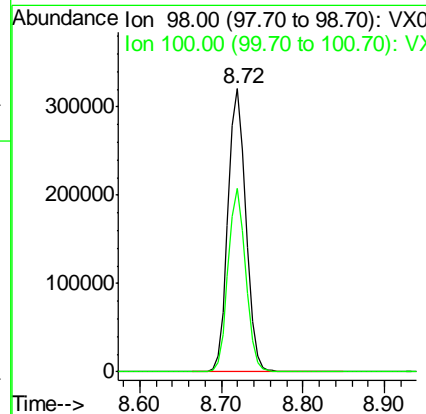
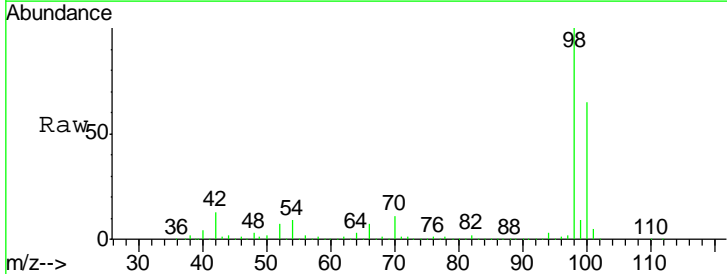
Instrument :  
 MSVOA\_X  
 ClientSampled :

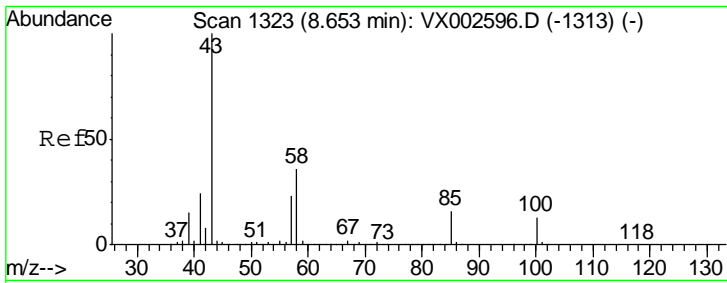
Tgt Ion	Resp	Lower	Upper
117	100		
119	5.0	77.4	116.0#
121	0.0	24.4	36.6#



#50  
 Toluene-d8  
 Concen: 47.13 ug/l  
 RT: 8.72 min Scan# 1334  
 Delta R.T. 0.00 min  
 Lab File: VX002777.D  
 Acq: 21 Jun 2018 07:50

Tgt Ion	Resp	Lower	Upper
98	100		
100	63.8	50.9	76.3

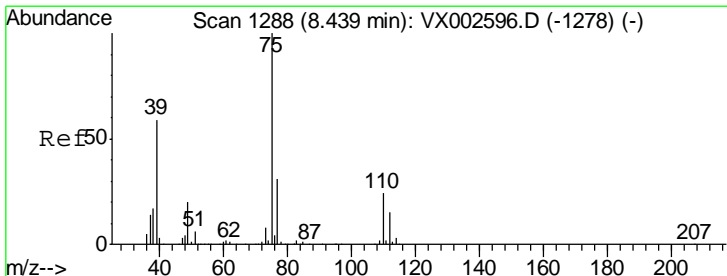
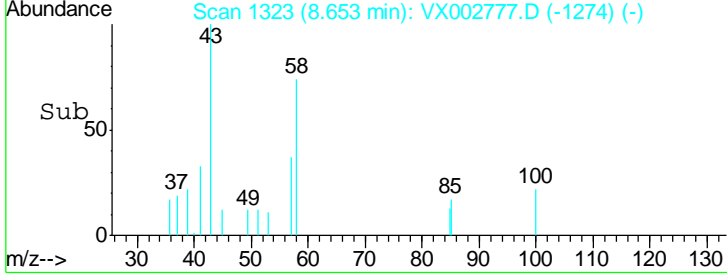
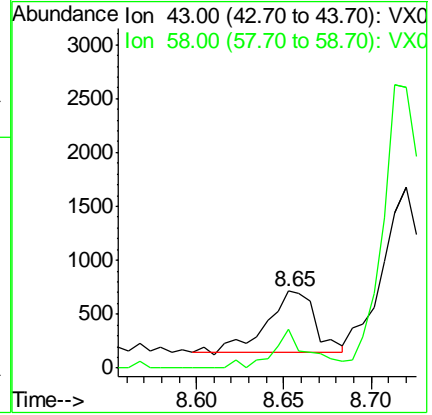
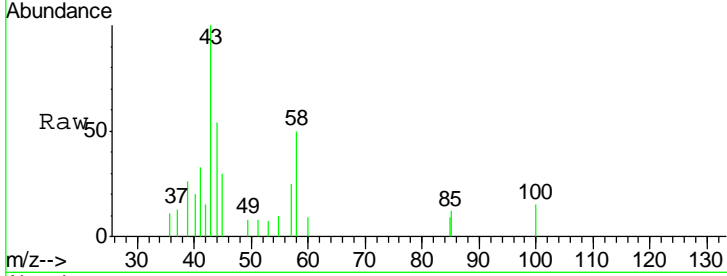




#51  
 4-Methyl-2-Pentanone  
 Concen: 0.26 ug/l  
 RT: 8.65 min Scan# 1323  
 Delta R.T. 0.00 min  
 Lab File: VX002777.D  
 Acq: 21 Jun 2018 07:50

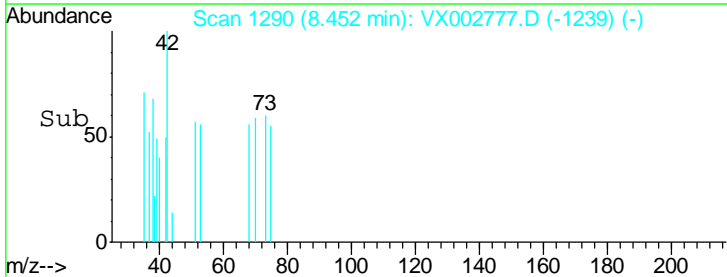
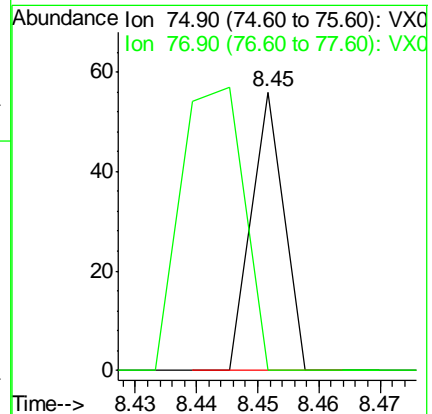
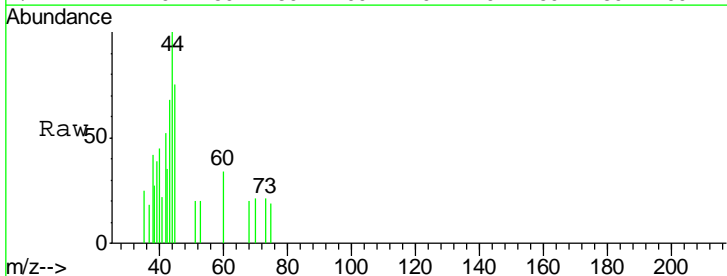
Instrument :  
 MSVOA\_X  
 ClientSampled :

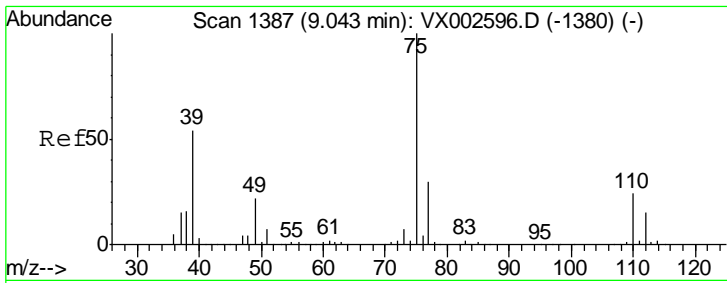
Tgt Ion: 43 Resp: 1122  
 Ion Ratio Lower Upper  
 43 100  
 58 45.2 28.6 42.8#



#53  
 t-1,3-Dichloropropene  
 Concen: 2.40 ug/l  
 RT: 8.45 min Scan# 1290  
 Delta R.T. 0.01 min  
 Lab File: VX002777.D  
 Acq: 21 Jun 2018 07:50

Tgt Ion: 75 Resp: 20  
 Ion Ratio Lower Upper  
 75 100  
 77 0.0 25.4 38.2#

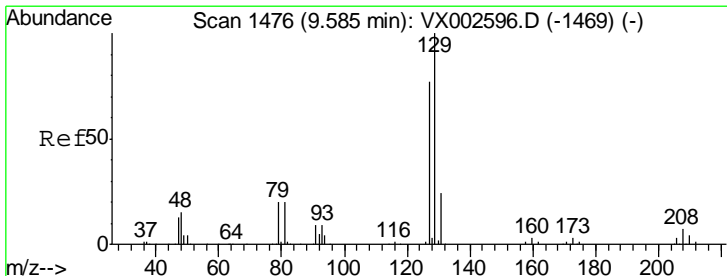
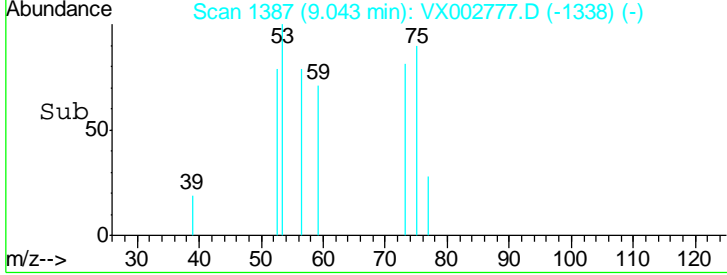
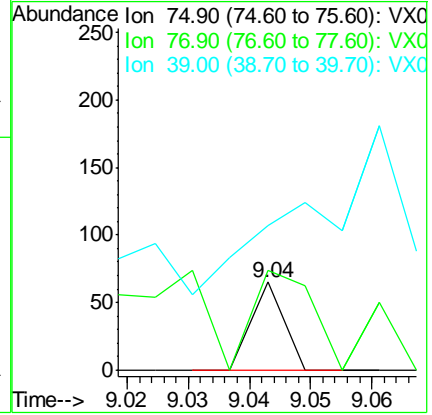
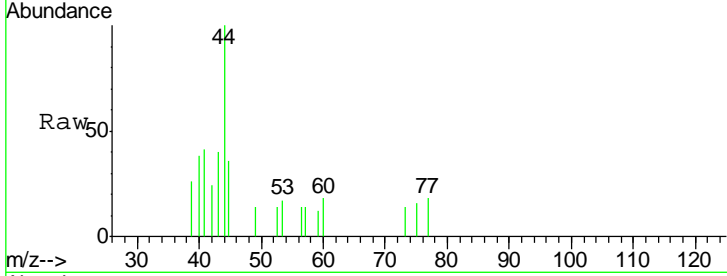




#54  
 cis-1,3-Dichloropropene  
 Concen: 3.22 ug/l  
 RT: 9.04 min Scan# 1387  
 Delta R.T. 0.00 min  
 Lab File: VX002777.D  
 Acq: 21 Jun 2018 07:50

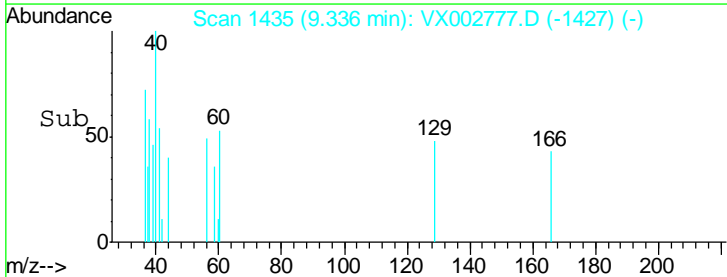
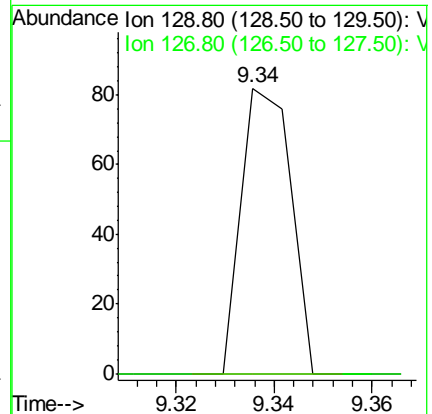
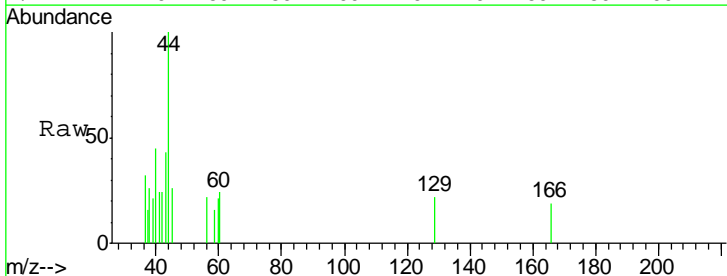
Instrument :  
 MSVOA\_X  
 ClientSampled :

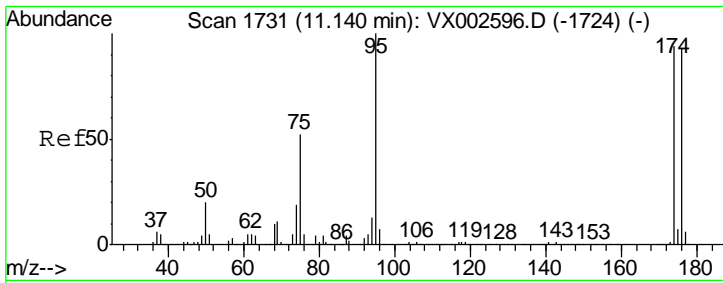
Tgt Ion	Resp	Lower	Upper
75	100		
77	113.8	24.8	37.2#
39	78.5	42.4	63.6#



#60  
 Dibromochloromethane  
 Concen: 3.78 ug/l  
 RT: 9.34 min Scan# 1435  
 Delta R.T. -0.25 min  
 Lab File: VX002777.D  
 Acq: 21 Jun 2018 07:50

Tgt Ion	Resp	Lower	Upper
129	100		
127	0.0	38.5	115.3#

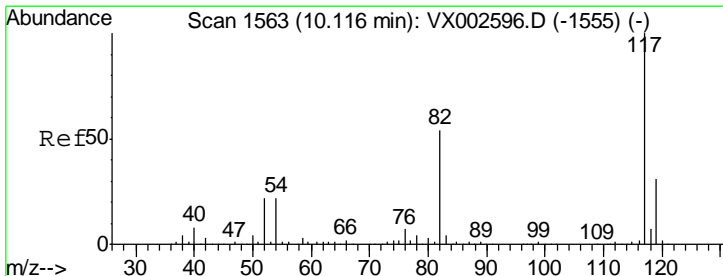
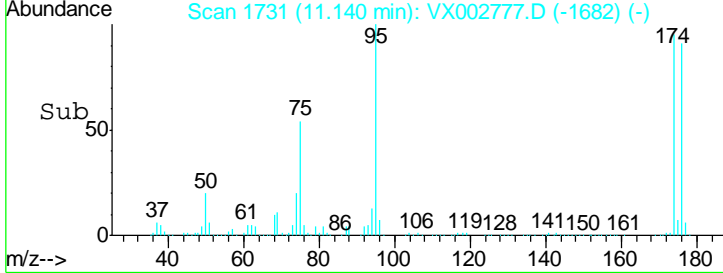
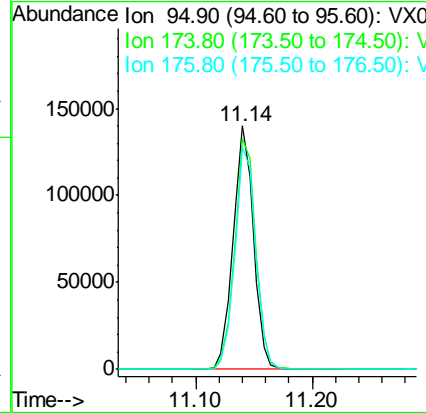
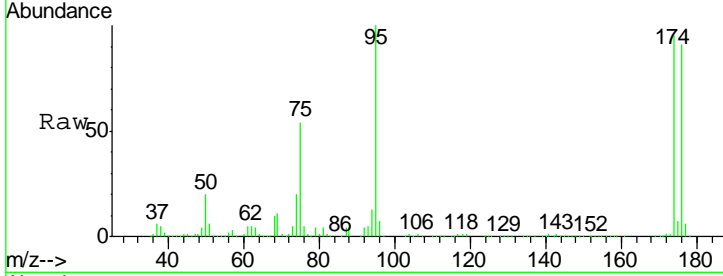




#62  
 4-Bromofluorobenzene  
 Concen: 43.14 ug/l  
 RT: 11.14 min Scan# 1731  
 Delta R.T. 0.00 min  
 Lab File: VX002777.D  
 Acq: 21 Jun 2018 07:50

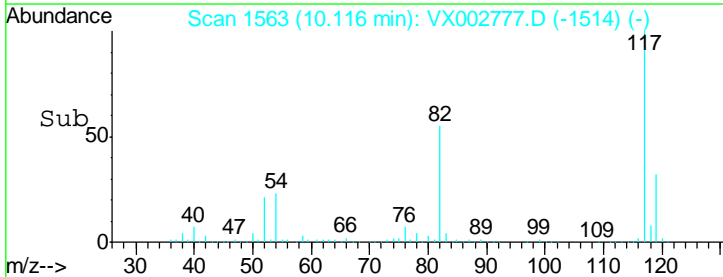
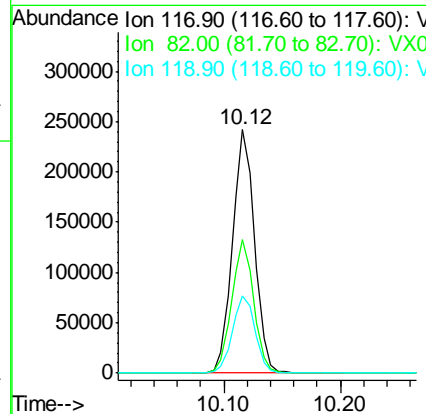
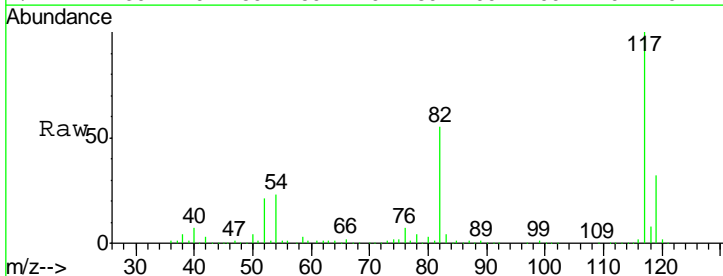
Instrument :  
 MSVOA\_X  
 ClientSampled :

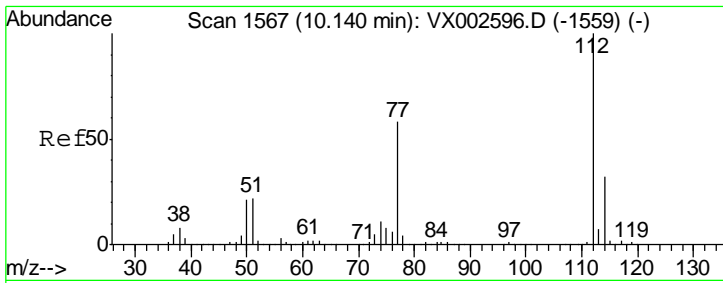
Tgt Ion	Resp	Lower	Upper
95	169822		
174	98.5	0.0	187.4
176	93.4	0.0	181.0



#63  
 Chlorobenzene-d5  
 Concen: 50.00 ug/l  
 RT: 10.12 min Scan# 1563  
 Delta R.T. 0.00 min  
 Lab File: VX002777.D  
 Acq: 21 Jun 2018 07:50

Tgt Ion	Resp	Lower	Upper
117	318597		
82	55.1	45.0	67.4
119	31.9	25.8	38.6

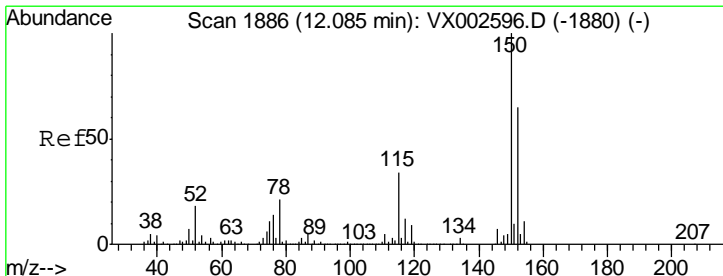
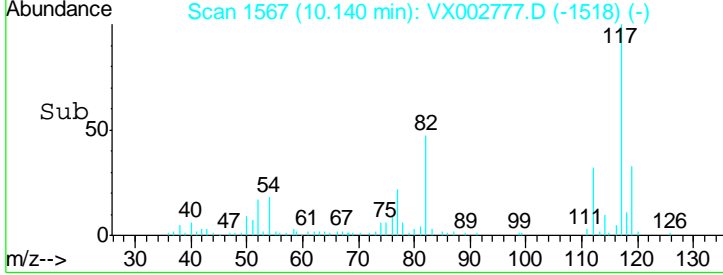
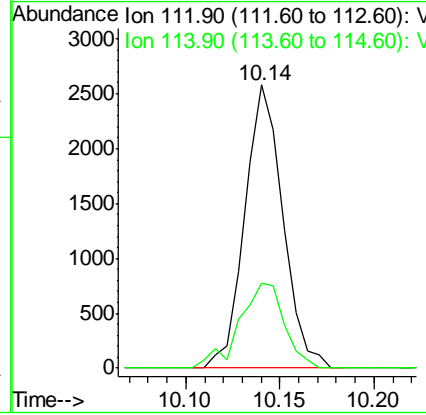
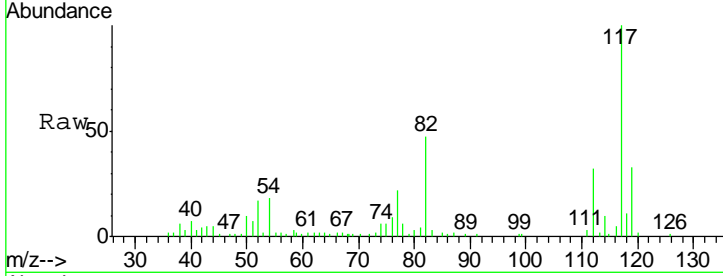




#65  
 Chlorobenzene  
 Concen: 0.46 ug/l  
 RT: 10.14 min Scan# 1567  
 Delta R.T. 0.00 min  
 Lab File: VX002777.D  
 Acq: 21 Jun 2018 07:50

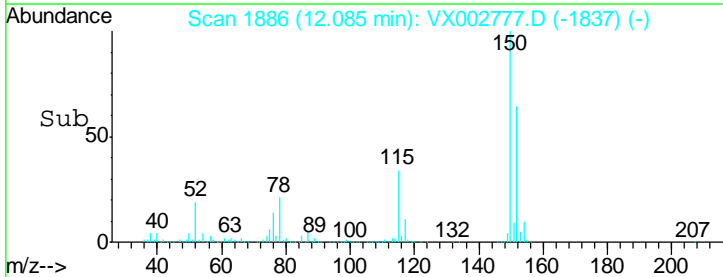
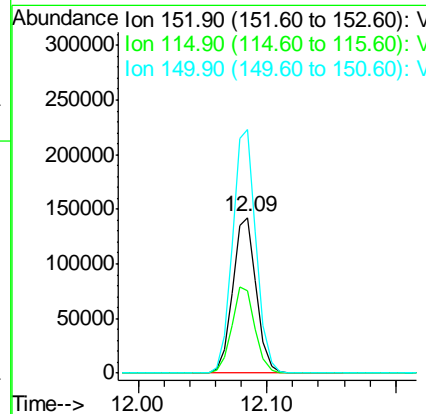
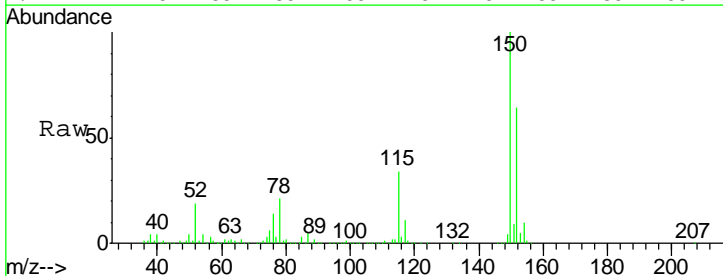
Instrument : MSVOA\_X  
 ClientSampled :

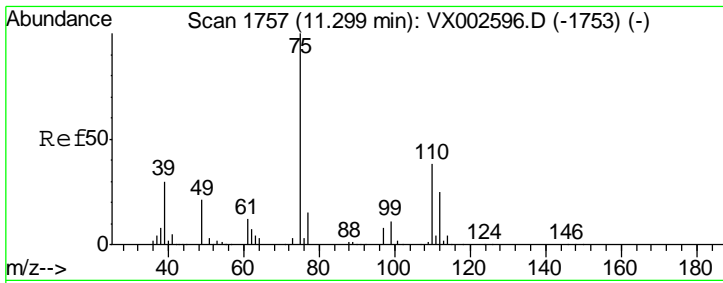
Tgt Ion	Resp	Lower	Upper
112	3616		
114	30.0	25.3	37.9



#72  
 1,4-Dichlorobenzene-d4  
 Concen: 50.00 ug/l  
 RT: 12.09 min Scan# 1886  
 Delta R.T. 0.00 min  
 Lab File: VX002777.D  
 Acq: 21 Jun 2018 07:50

Tgt Ion	Resp	Lower	Upper
152	182065		
115	54.6	40.1	120.2
150	156.6	0.0	347.2

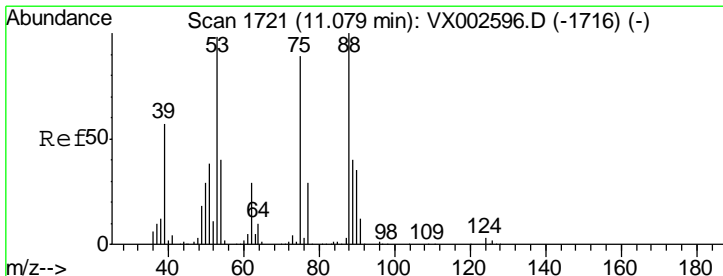
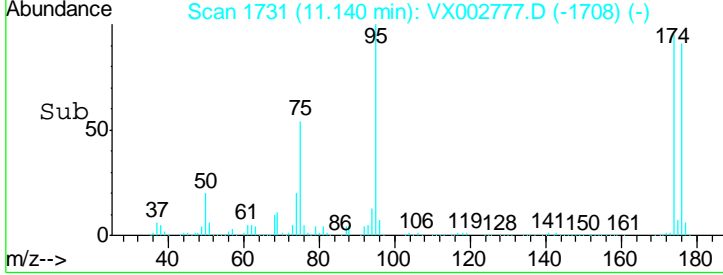
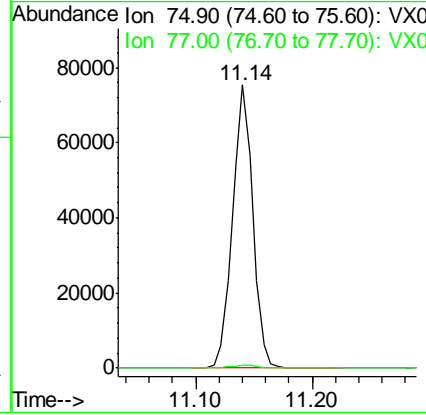
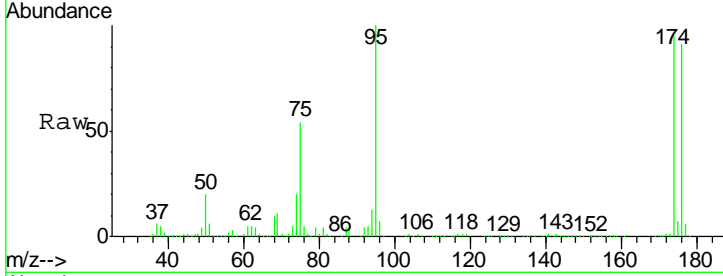




#76  
 1,2,3-Trichloropropane  
 Concen: 26.46 ug/l  
 RT: 11.14 min Scan# 1731  
 Delta R.T. -0.16 min  
 Lab File: VX002777.D  
 Acq: 21 Jun 2018 07:50

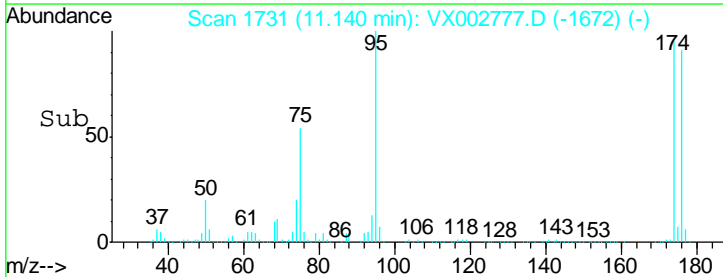
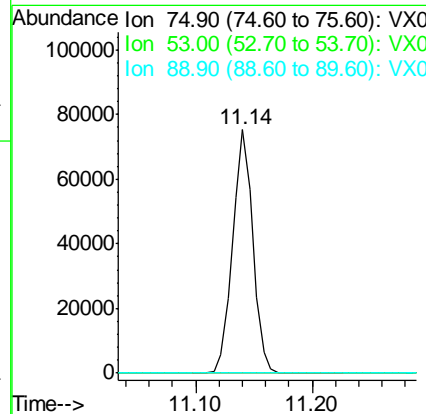
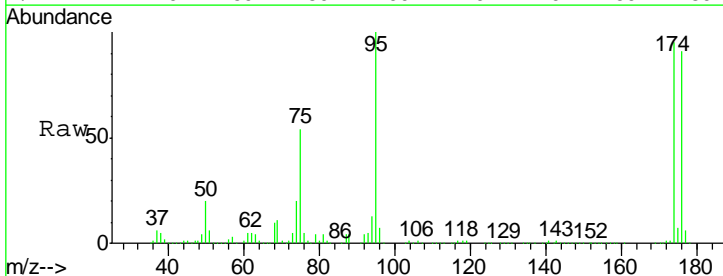
Instrument :  
 MSVOA\_X  
 ClientSampled :

Tgt Ion	Resp	Lower	Upper
75	100		
77	1.2	22.8	68.3#

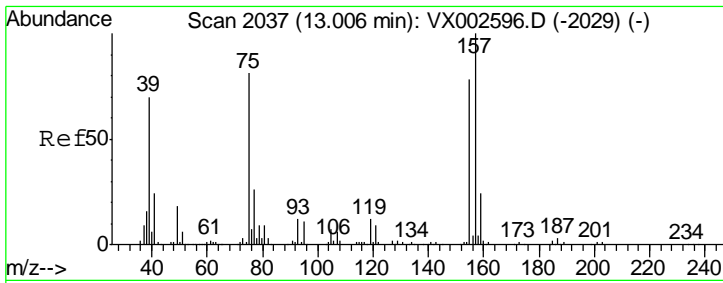


#81  
 trans-1,4-Dichloro-2-butene  
 Concen: 81.77 ug/l  
 RT: 11.14 min Scan# 1731  
 Delta R.T. 0.06 min  
 Lab File: VX002777.D  
 Acq: 21 Jun 2018 07:50

Tgt Ion	Resp	Lower	Upper
75	100		
53	0.1	86.8	130.2#
89	0.0	38.2	57.2#



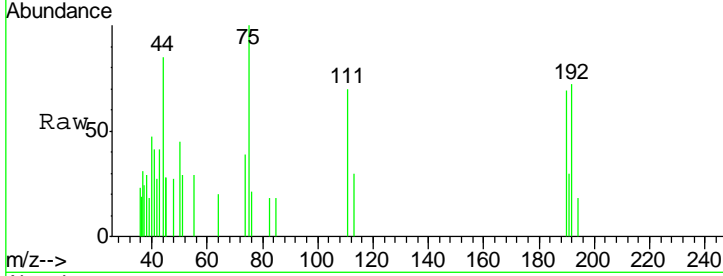




#92  
 1,2-Dibromo-3-Chloropropane  
 Concen: 0.42 ug/l  
 RT: 12.98 min Scan# 2032  
 Delta R.T. -0.03 min  
 Lab File: VX002777.D  
 Acq: 21 Jun 2018 07:50

Instrument :  
 MSVOA\_X  
 ClientSampleId :

Tot Ion	75	Resp	320
Ion	Ratio	Lower	Upper
75	100		
155	0.0	45.8	137.4#
157	0.0	60.1	180.3#



Abundance Ion 74.90 (74.60 to 75.60): VX0  
 Ion 154.80 (154.50 to 155.50): V  
 Ion 156.80 (156.50 to 157.50): V

