

Data Path : Z:\VOASRV\HPCHEM1\MSVOA X\DATA\VX062018\
 Data File : VX002754.D
 Acq On : 20 Jun 2018 20:47
 Operator : JC/MD
 Sample : J3597-07
 Misc : 5.0mL/MSVOA X/WATER
 ALS Vial : 23 Sample Multiplier: 1

Instrument :
 MSVOA_X
 ClientSampleId :
 W-28

Quant Time: Jun 21 05:42:28 2018
 Quant Method : Z:\VOASRV\HPCHEM1\MSVOA_X\METHOD\82X061518W.M
 Quant Title : SW846 8260
 QLast Update : Sat Jun 16 01:37:33 2018
 Response via : Initial Calibration

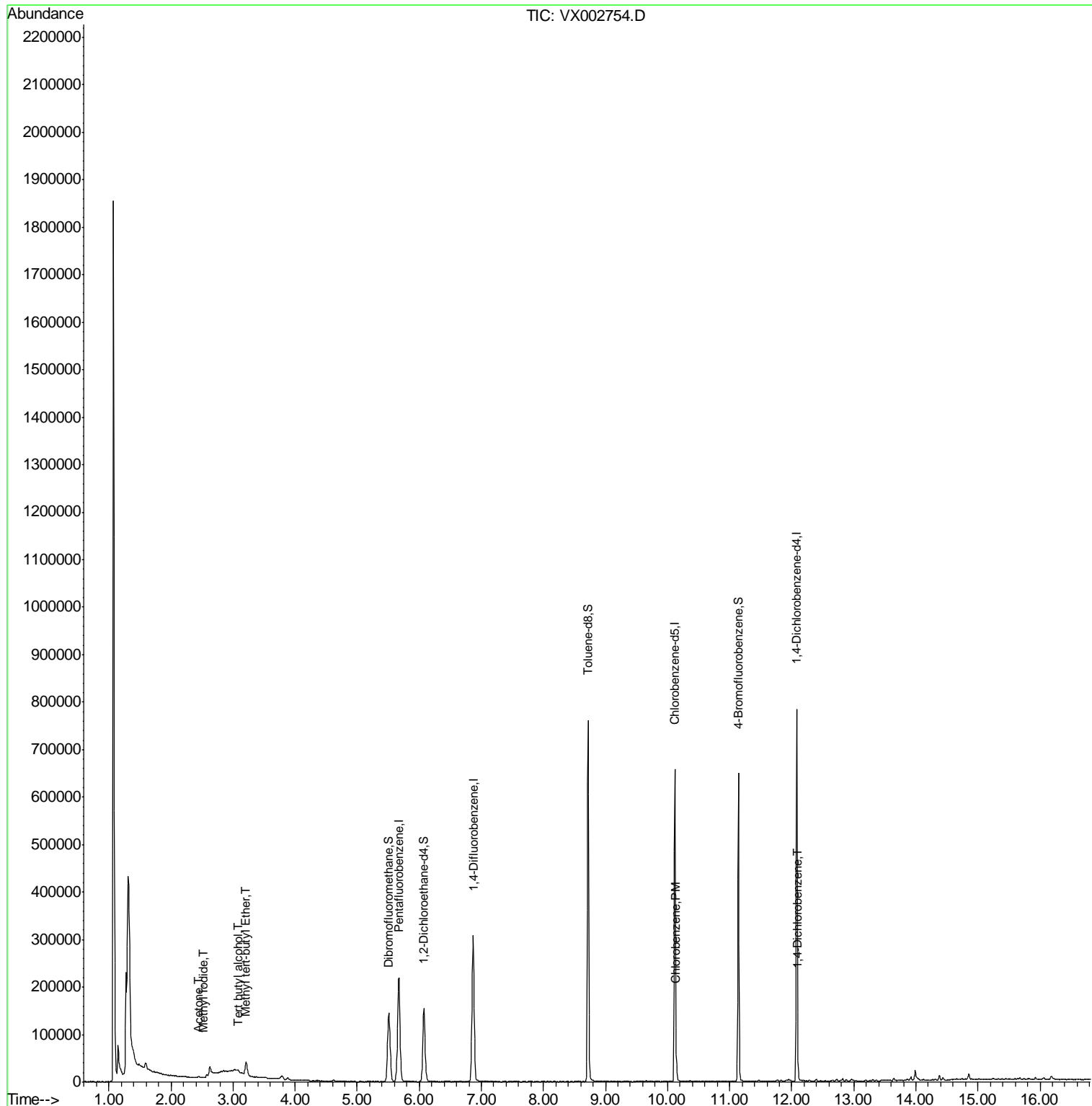
Internal Standards	R.T.	QIon	Response	Conc	Units	Dev(Min)
1) Pentafluorobenzene	5.67	168	218655	50.00	ug/l	0.00
34) 1,4-Difluorobenzene	6.87	114	305545	50.00	ug/l	0.00
63) Chlorobenzene-d5	10.12	117	282385	50.00	ug/l	0.00
72) 1,4-Dichlorobenzene-d4	12.09	152	165324	50.00	ug/l	0.00
System Monitoring Compounds						
33) 1,2-Dichloroethane-d4	6.07	65	145125	43.68	ug/l	0.00
Spiked Amount	50.000		Recovery	=	87.36%	
35) Dibromofluoromethane	5.51	113	119905	49.17	ug/l	0.00
Spiked Amount	50.000		Recovery	=	98.34%	
50) Toluene-d8	8.72	98	426574	46.07	ug/l	0.00
Spiked Amount	50.000		Recovery	=	92.14%	
62) 4-Bromofluorobenzene	11.14	95	152207	43.38	ug/l	0.00
Spiked Amount	50.000		Recovery	=	86.76%	
Target Compounds						
10) Methyl Iodide	2.52	142	1210	5.49	ug/l #	85
11) Tert butyl alcohol	3.08	59	3449	5.02	ug/l #	75
16) Acetone	2.45	43	1552	1.06	ug/l #	69
19) Methyl tert-butyl Ether	3.21	73	29379	3.21	ug/l	97
65) Chlorobenzene	10.14	112	13952	2.01	ug/l	98
88) 1,4-Dichlorobenzene	12.10	146	5276	0.92	ug/l #	63

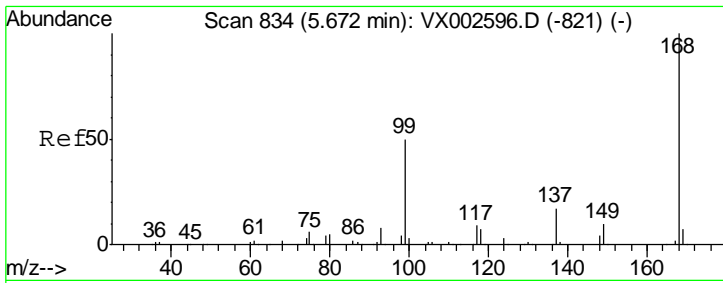
(#) = qualifier out of range (m) = manual integration (+) = signals summed

Data Path : Z:\VOASRV\HPCHEM1\MSVOA X\DATA\VX062018\
 Data File : VX002754.D
 Acq On : 20 Jun 2018 20:47
 Operator : JC/MD
 Sample : J3597-07
 Misc : 5.0mL/MSVOA X/WATER
 ALS Vial : 23 Sample Multiplier: 1

Instrument :
 MSVOA_X
 ClientSampleId :
 W-28

Quant Time: Jun 21 05:42:28 2018
 Quant Method : Z:\VOASRV\HPCHEM1\MSVOA_X\METHOD\82X061518W.M
 Quant Title : SW846 8260
 QLast Update : Sat Jun 16 01:37:33 2018
 Response via : Initial Calibration

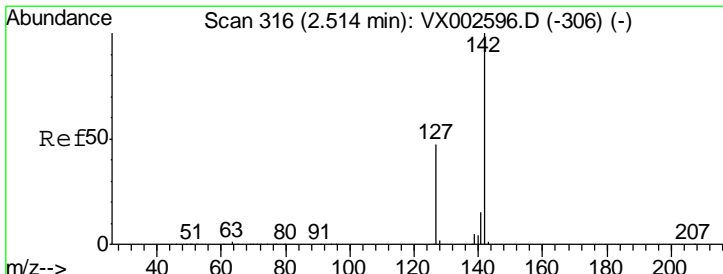
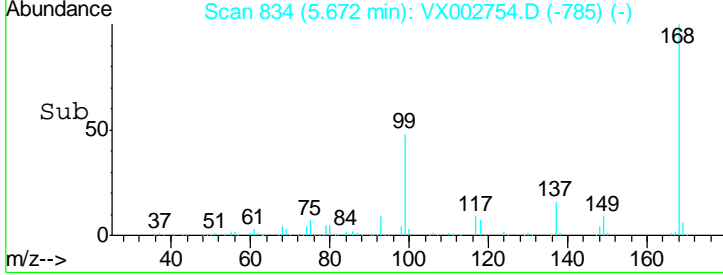
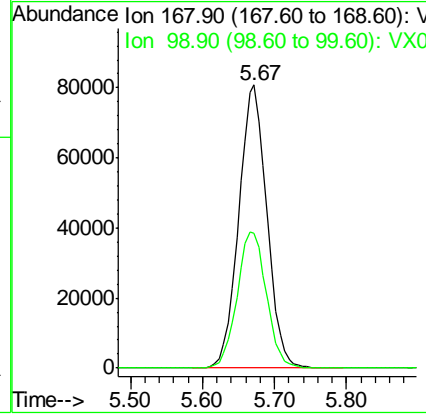
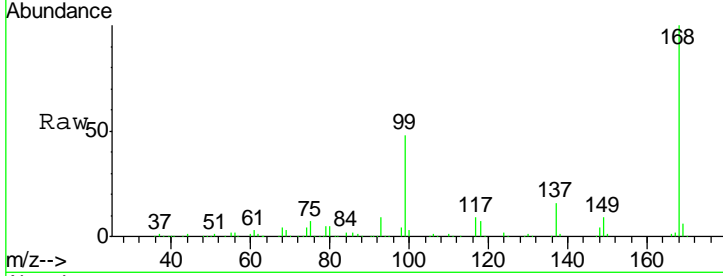




#1
 Pentafluorobenzene
 Concen: 50.00 ug/l
 RT: 5.67 min Scan# 834
 Delta R.T. 0.00 min
 Lab File: VX002754.D
 Acq: 20 Jun 2018 20:47

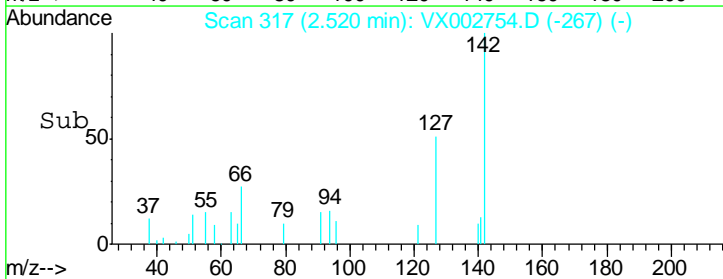
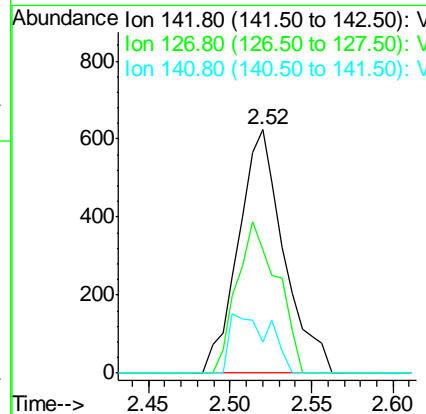
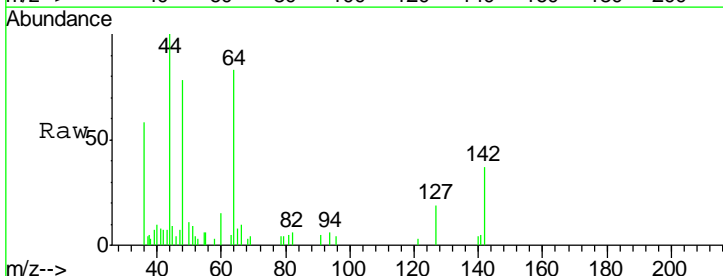
Instrument :
 MSVOA_X
 ClientSampled :
 W-28

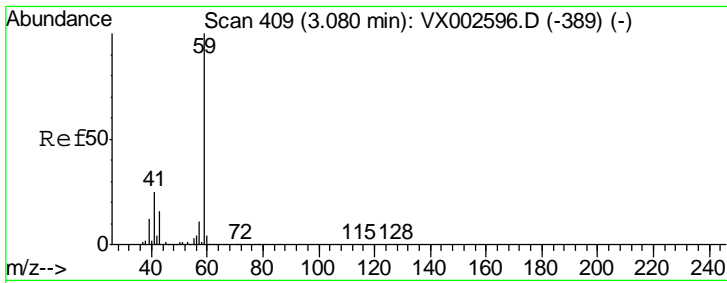
Tgt Ion: 168 Resp: 218655
 Ion Ratio Lower Upper
 168 100
 99 47.5 39.3 58.9



#10
 Methyl Iodide
 Concen: 5.49 ug/l
 RT: 2.52 min Scan# 317
 Delta R.T. 0.01 min
 Lab File: VX002754.D
 Acq: 20 Jun 2018 20:47

Tgt Ion: 142 Resp: 1210
 Ion Ratio Lower Upper
 142 100
 127 55.5 36.6 55.0#
 141 21.2 11.3 16.9#

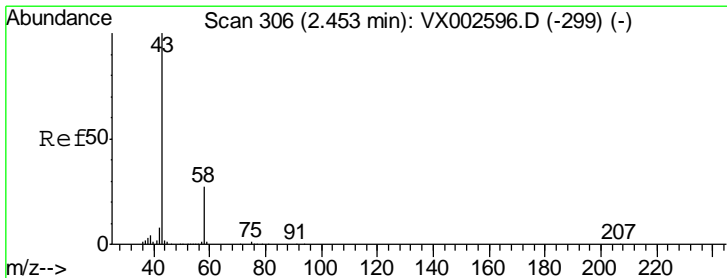
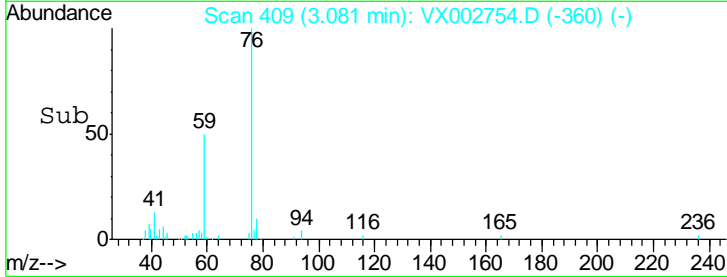
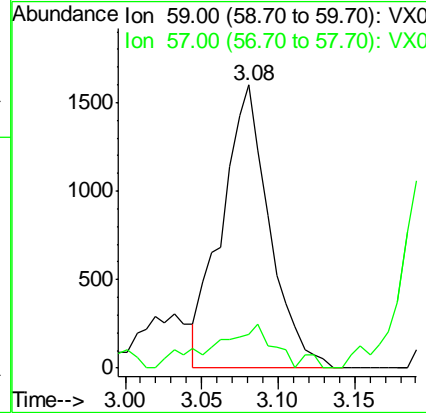
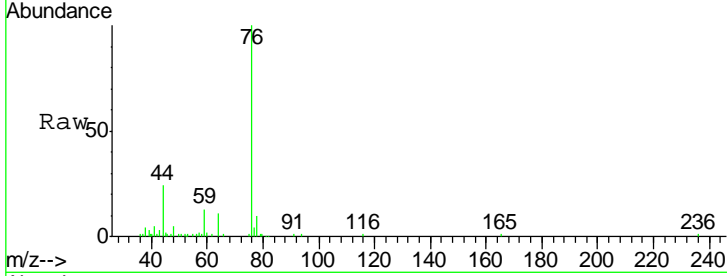




#11
 Tert butyl alcohol
 Concen: 5.02 ug/l
 RT: 3.08 min Scan# 409
 Delta R.T. 0.00 min
 Lab File: VX002754.D
 Acq: 20 Jun 2018 20:47

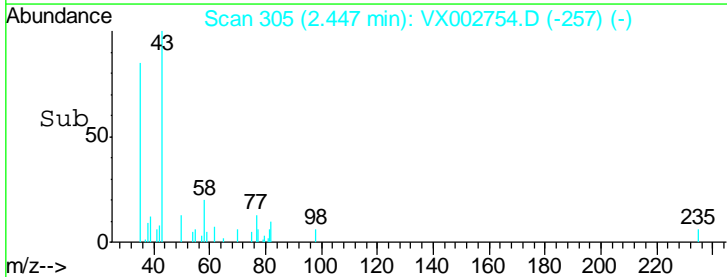
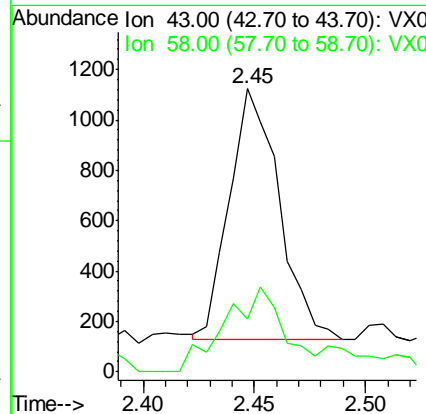
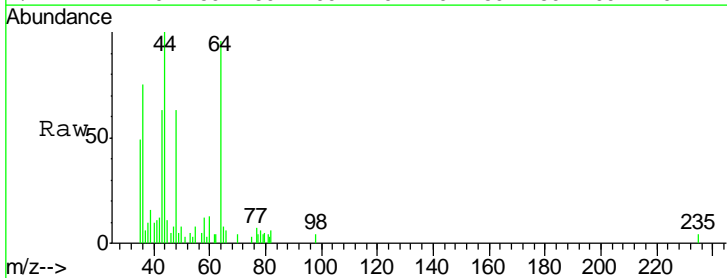
Instrument : MSVOA_X
 ClientSampled : W-28

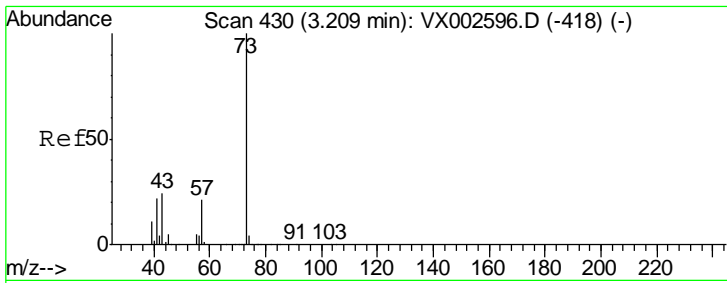
Tgt Ion	Resp	Lower	Upper
59	100		
57	19.4	8.2	12.2#



#16
 Acetone
 Concen: 1.06 ug/l
 RT: 2.45 min Scan# 305
 Delta R.T. -0.01 min
 Lab File: VX002754.D
 Acq: 20 Jun 2018 20:47

Tgt Ion	Resp	Lower	Upper
43	100		
58	11.6	22.1	33.1#

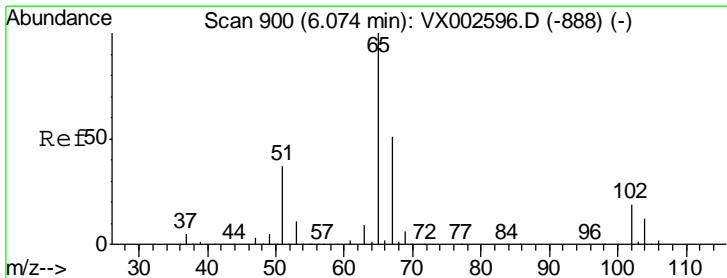
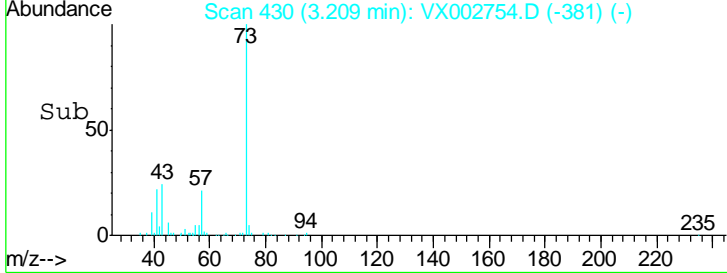
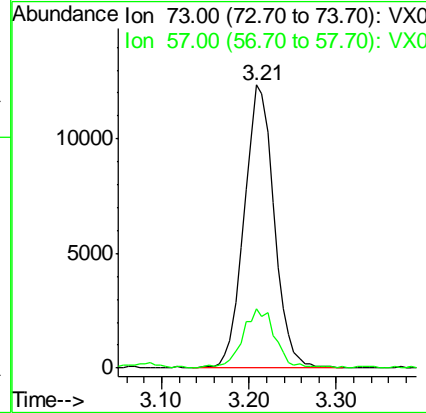
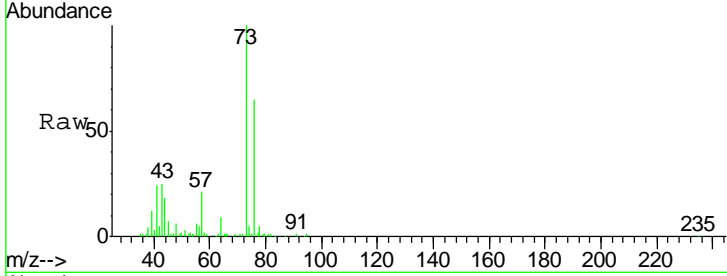




#19
 Methyl tert-butyl Ether
 Concen: 3.21 ug/l
 RT: 3.21 min Scan# 430
 Delta R.T. 0.00 min
 Lab File: VX002754.D
 Acq: 20 Jun 2018 20:47

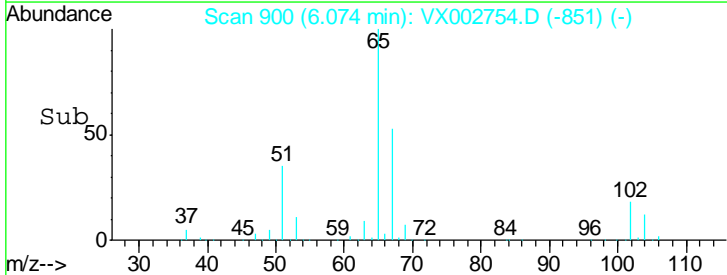
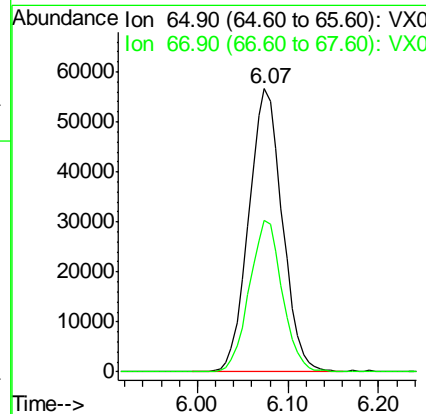
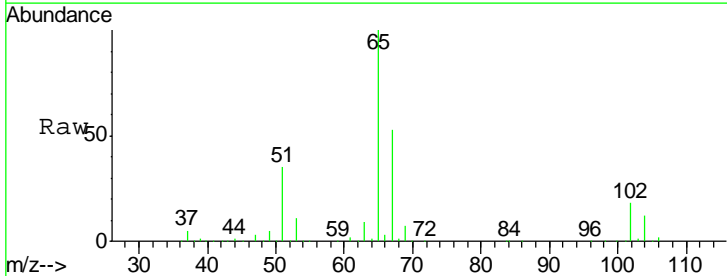
Instrument :
 MSVOA_X
ClientSampled :
 W-28

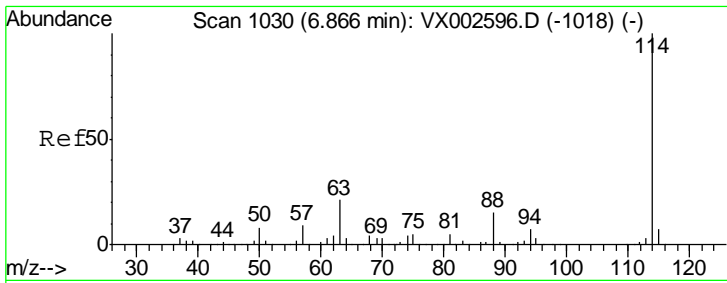
Tgt Ion	Resp	Lower	Upper
73	29379		
57	20.8	17.7	26.5



#33
 1,2-Dichloroethane-d4
 Concen: 43.68 ug/l
 RT: 6.07 min Scan# 900
 Delta R.T. 0.00 min
 Lab File: VX002754.D
 Acq: 20 Jun 2018 20:47

Tgt Ion	Resp	Lower	Upper
65	145125		
67	52.4	0.0	102.6

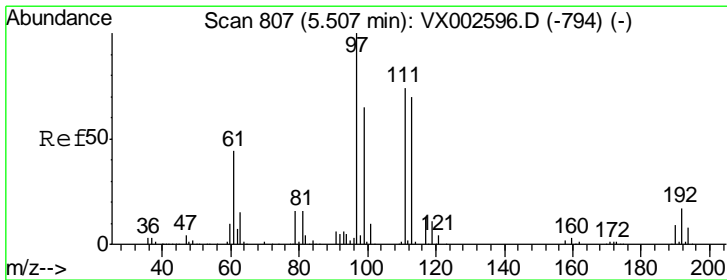
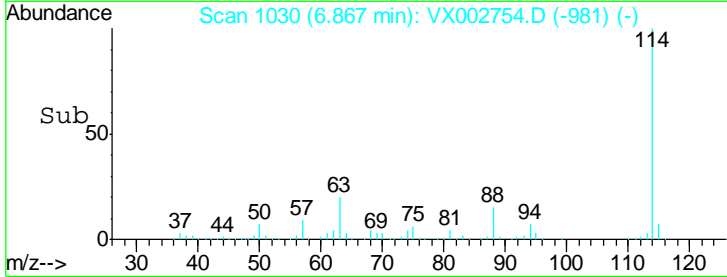
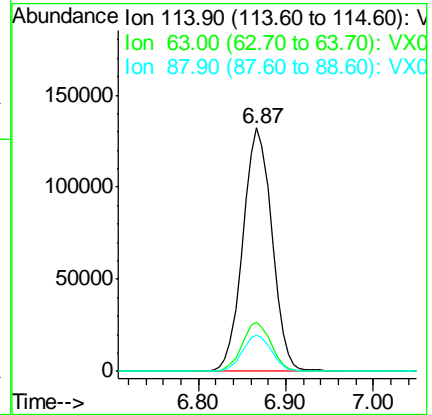
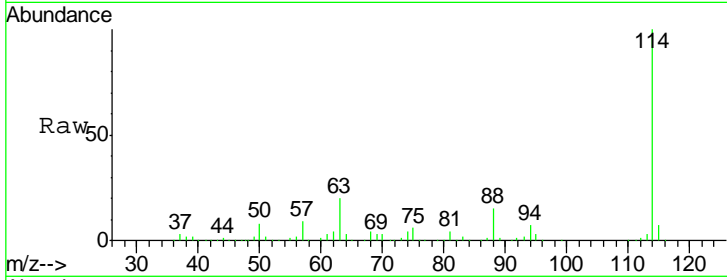




#34
 1,4-Difluorobenzene
 Concen: 50.00 ug/l
 RT: 6.87 min Scan# 1030
 Delta R.T. 0.00 min
 Lab File: VX002754.D
 Acq: 20 Jun 2018 20:47

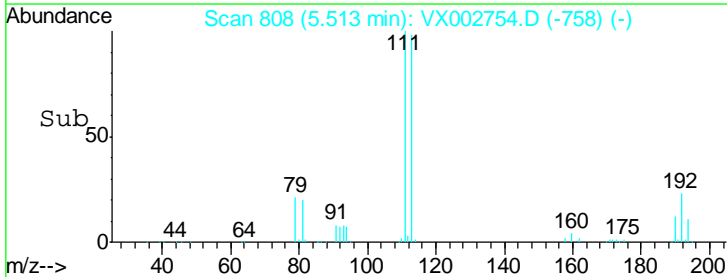
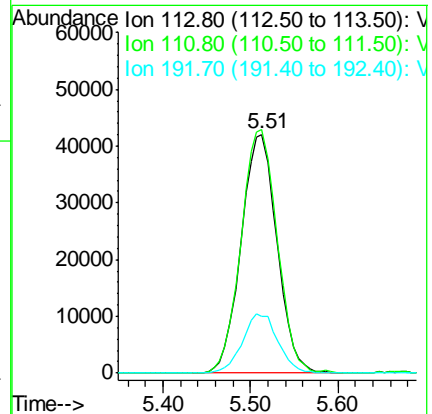
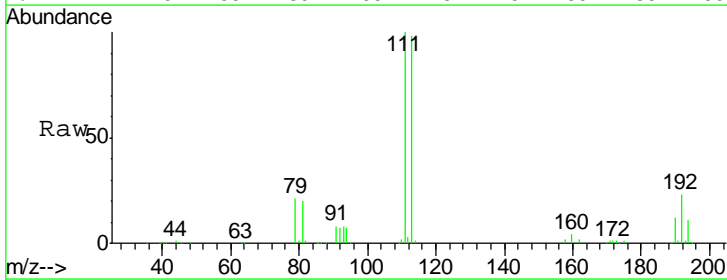
Instrument :
 MSVOA_X
 ClientSampled :
 W-28

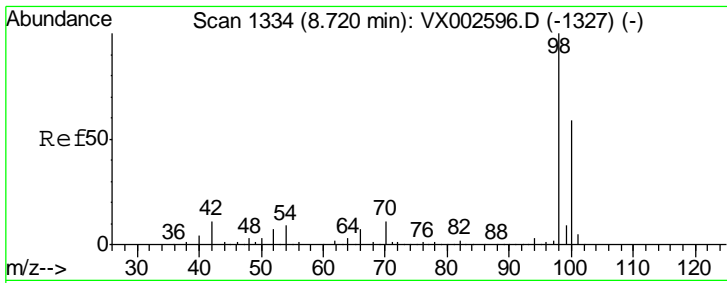
Tgt Ion	Resp	Lower	Upper
114	100		
63	20.2	0.0	41.4
88	14.8	0.0	30.0



#35
 Dibromofluoromethane
 Concen: 49.17 ug/l
 RT: 5.51 min Scan# 808
 Delta R.T. 0.01 min
 Lab File: VX002754.D
 Acq: 20 Jun 2018 20:47

Tgt Ion	Resp	Lower	Upper
113	100		
111	102.8	81.4	122.0
192	24.5	19.1	28.7

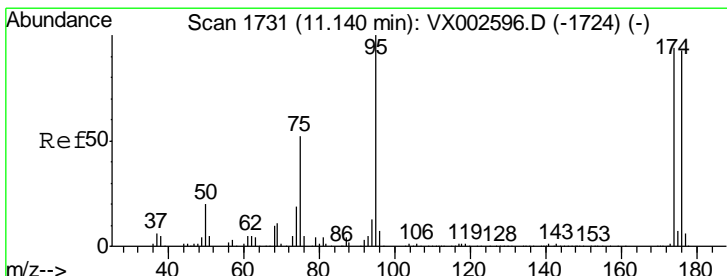
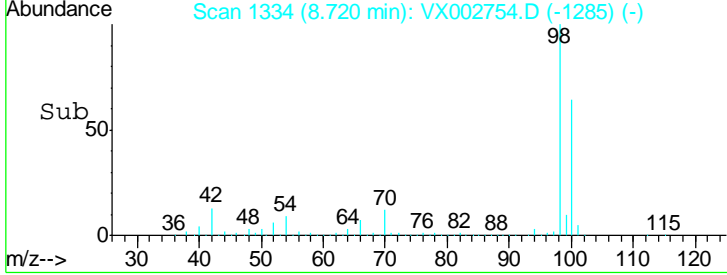
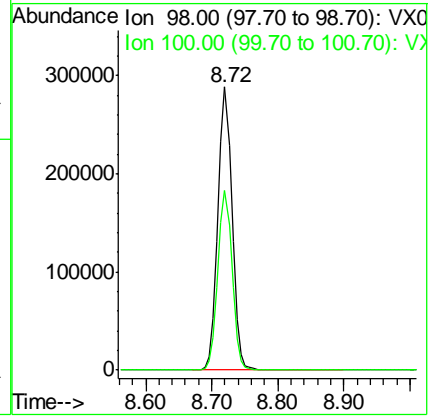
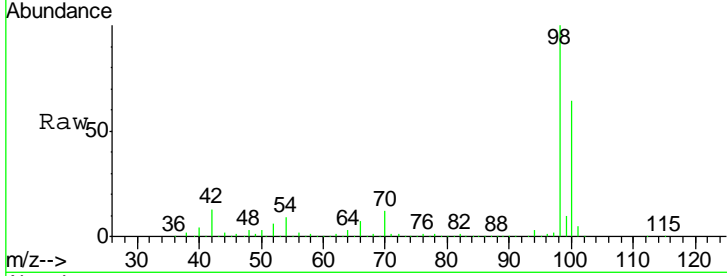




#50
 Toluene-d8
 Concen: 46.07 ug/l
 RT: 8.72 min Scan# 1334
 Delta R.T. 0.00 min
 Lab File: VX002754.D
 Acq: 20 Jun 2018 20:47

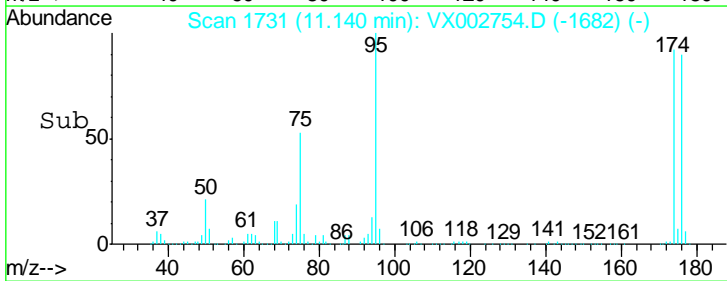
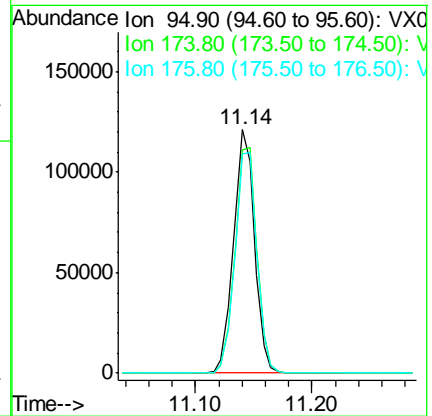
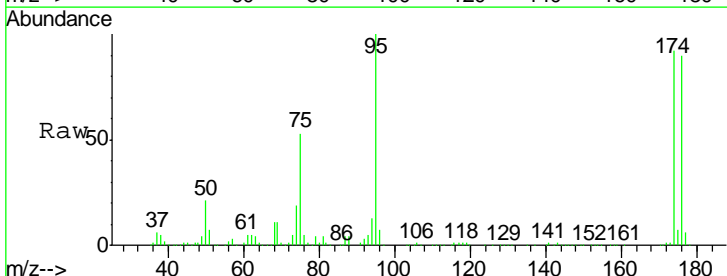
Instrument : MSVOA_X
 ClientSampled : W-28

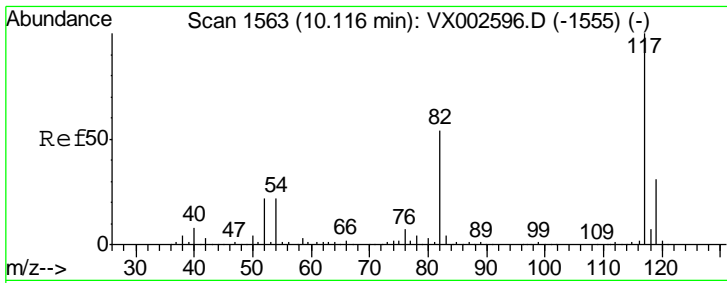
Tgt Ion	Resp	Lower	Upper
98	426574		
100	100		
100	63.9	50.9	76.3



#62
 4-Bromofluorobenzene
 Concen: 43.38 ug/l
 RT: 11.14 min Scan# 1731
 Delta R.T. 0.00 min
 Lab File: VX002754.D
 Acq: 20 Jun 2018 20:47

Tgt Ion	Resp	Lower	Upper
95	152207		
95	100		
174	97.5	0.0	187.4
176	95.0	0.0	181.0

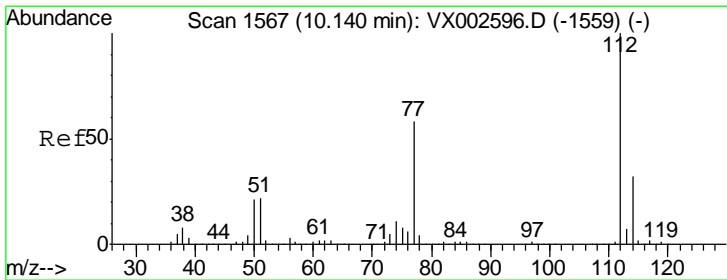
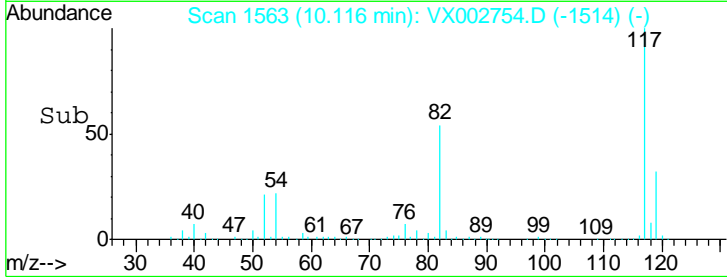
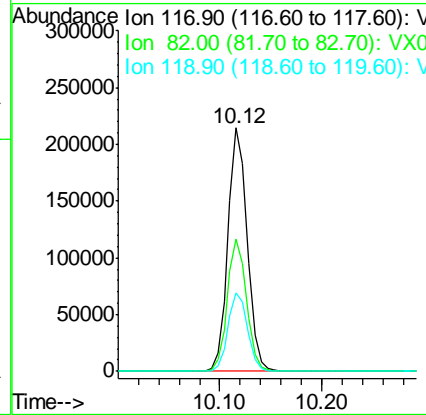
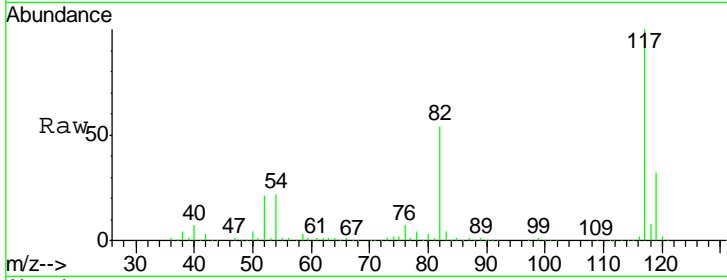




#63
 Chlorobenzene-d5
 Concen: 50.00 ug/l
 RT: 10.12 min Scan# 1563
 Delta R.T. 0.00 min
 Lab File: VX002754.D
 Acq: 20 Jun 2018 20:47

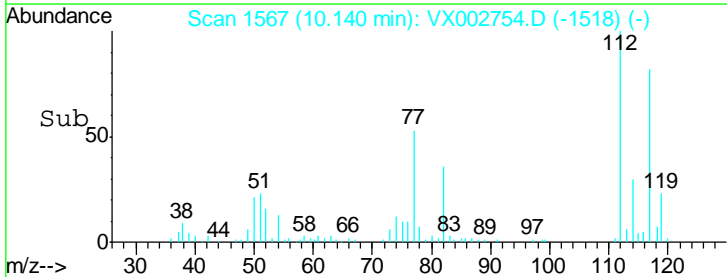
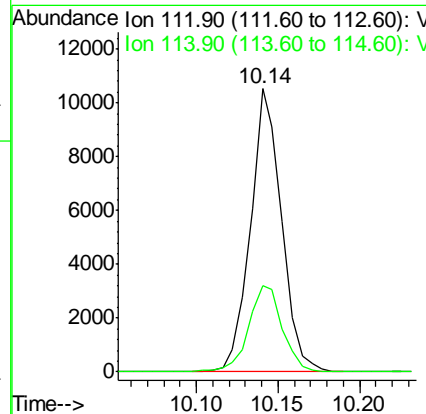
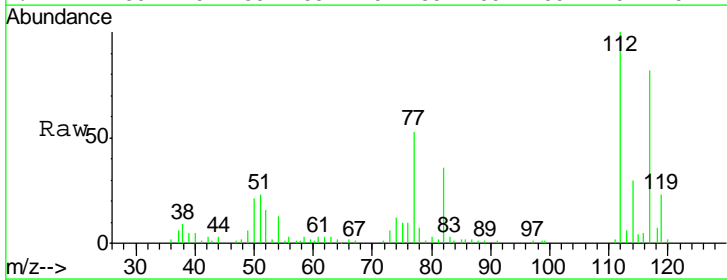
Instrument :
 MSVOA_X
 ClientSampled :
 W-28

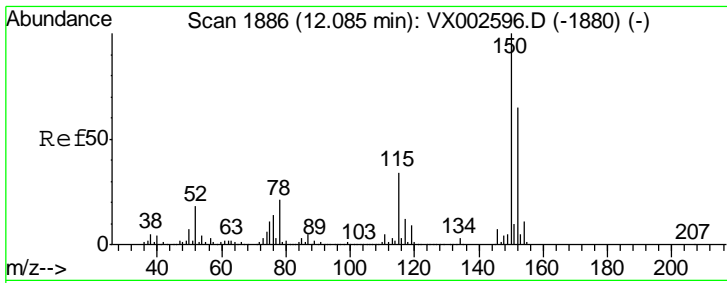
Tgt Ion	Resp	Lower	Upper
117	100		
82	54.3	45.0	67.4
119	32.1	25.8	38.6



#65
 Chlorobenzene
 Concen: 2.01 ug/l
 RT: 10.14 min Scan# 1567
 Delta R.T. 0.00 min
 Lab File: VX002754.D
 Acq: 20 Jun 2018 20:47

Tgt Ion	Resp	Lower	Upper
112	100		
114	30.4	25.3	37.9

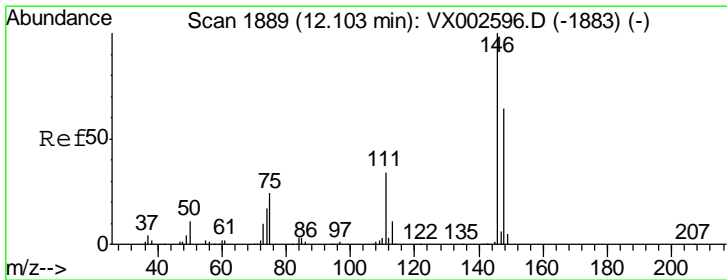
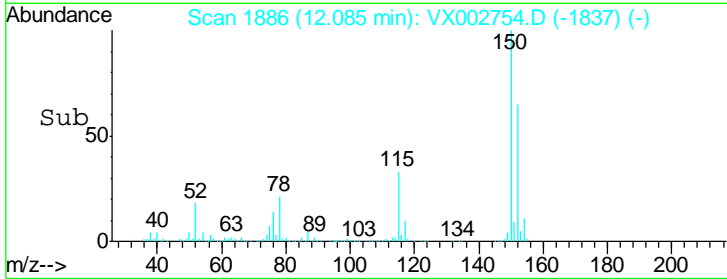
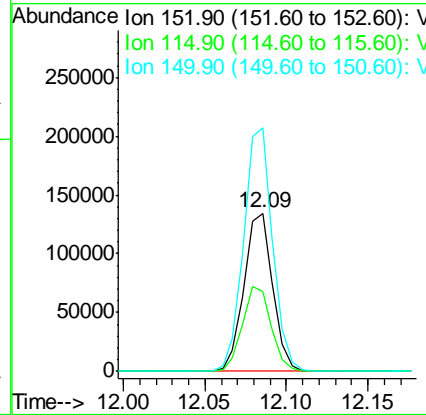
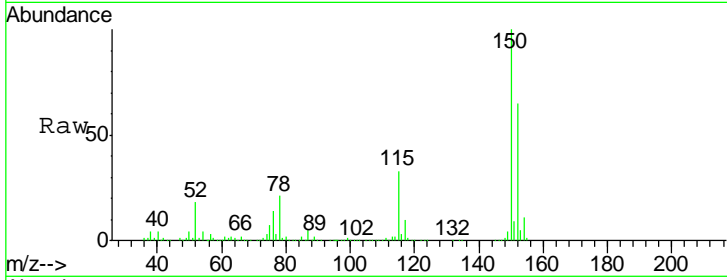




#72
 1,4-Dichlorobenzene-d4
 Concen: 50.00 ug/l
 RT: 12.09 min Scan# 1886
 Delta R.T. 0.00 min
 Lab File: VX002754.D
 Acq: 20 Jun 2018 20:47

Instrument :
 MSVOA_X
 ClientSampled :
 W-28

Tgt Ion	Resp	Lower	Upper
152	100		
115	53.7	40.1	120.2
150	155.2	0.0	347.2



#88
 1,4-Dichlorobenzene
 Concen: 0.92 ug/l
 RT: 12.10 min Scan# 1889
 Delta R.T. 0.00 min
 Lab File: VX002754.D
 Acq: 20 Jun 2018 20:47

Tgt Ion	Resp	Lower	Upper
146	100		
111	77.6	18.7	56.1#
148	80.2	32.4	97.0

