

Data Path : Z:\voasrv\HPCHEM1\MSVOA\_X\Data\VX080823\  
 Data File : VX036876.D  
 Acq On : 08 Aug 2023 20:02  
 Operator : JC/MD  
 Sample : IBLK  
 Misc : 5.0mL/MSVOA\_X/WATER  
 ALS Vial : 26 Sample Multiplier: 1

Instrument :  
 MSVOA\_X  
 ClientSampleId :  
 IBLK

Quant Time: Aug 09 04:21:16 2023  
 Quant Method : Z:\voasrv\HPCHEM1\MSVOA\_X\Method\82X072123W.M  
 Quant Title : SW846 8260  
 QLast Update : Fri Jul 21 12:14:12 2023  
 Response via : Initial Calibration

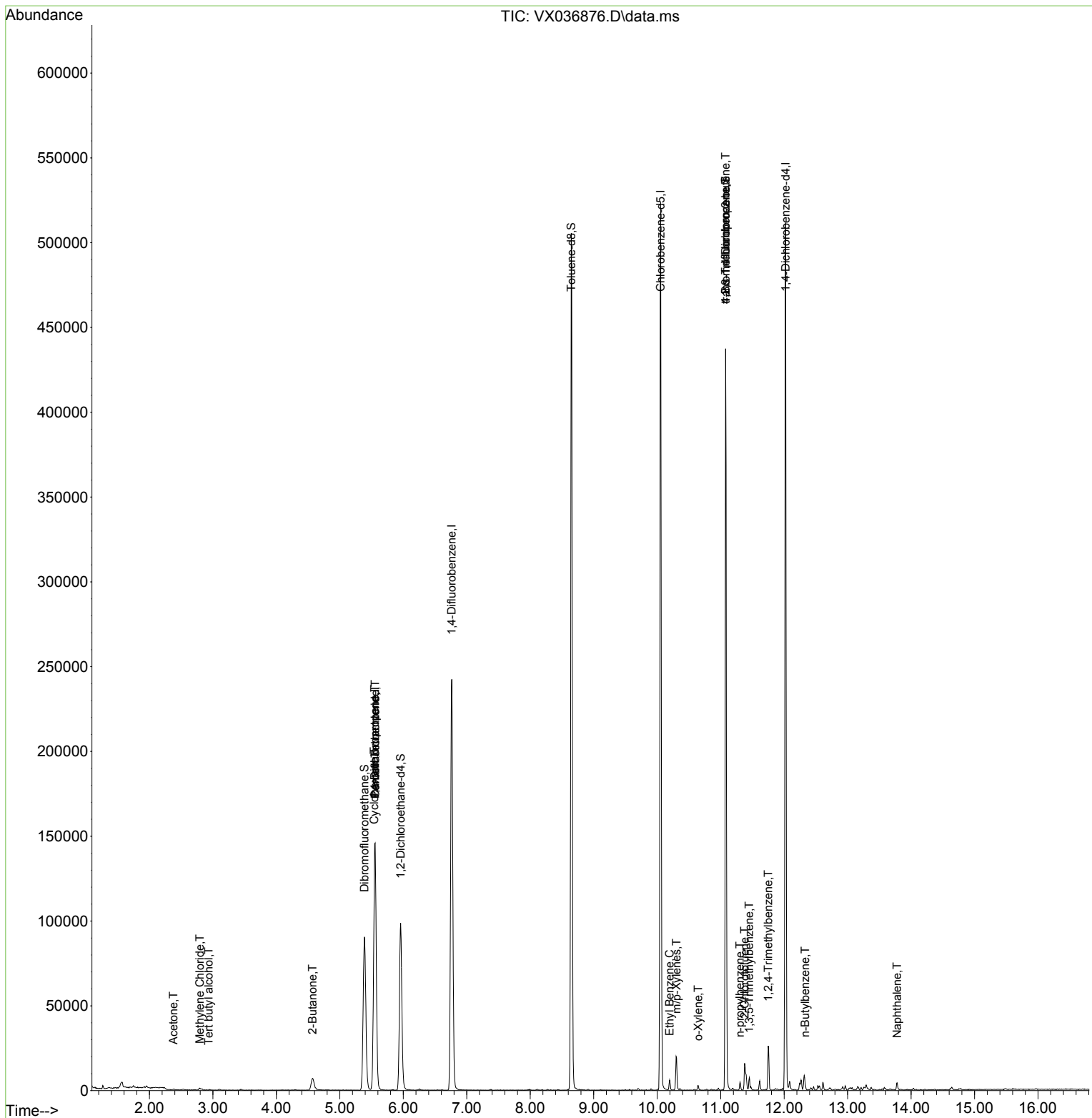
| Compound                      | R.T.   | QIon           | Response | Conc   | Units    | Dev(Min) |
|-------------------------------|--------|----------------|----------|--------|----------|----------|
| -----                         |        |                |          |        |          |          |
| Internal Standards            |        |                |          |        |          |          |
| 1) Pentafluorobenzene         | 5.555  | 168            | 137495   | 50.000 | ug/l     | 0.00     |
| 34) 1,4-Difluorobenzene       | 6.763  | 114            | 251788   | 50.000 | ug/l     | 0.00     |
| 63) Chlorobenzene-d5          | 10.055 | 117            | 237116   | 50.000 | ug/l     | 0.00     |
| 72) 1,4-Dichlorobenzene-d4    | 12.024 | 152            | 108508   | 50.000 | ug/l     | 0.00     |
| System Monitoring Compounds   |        |                |          |        |          |          |
| 33) 1,2-Dichloroethane-d4     | 5.958  | 65             | 97049    | 47.703 | ug/l     | 0.00     |
| Spiked Amount                 | 50.000 | Range 78 - 117 | Recovery | =      | 95.400%  |          |
| 35) Dibromofluoromethane      | 5.385  | 113            | 79766    | 46.090 | ug/l     | 0.00     |
| Spiked Amount                 | 50.000 | Range 75 - 124 | Recovery | =      | 92.180%  |          |
| 50) Toluene-d8                | 8.646  | 98             | 300358   | 48.940 | ug/l     | 0.00     |
| Spiked Amount                 | 50.000 | Range 92 - 112 | Recovery | =      | 97.880%  |          |
| 62) 4-Bromofluorobenzene      | 11.079 | 95             | 117373   | 50.690 | ug/l     | 0.00     |
| Spiked Amount                 | 50.000 | Range 83 - 123 | Recovery | =      | 101.380% |          |
| Target Compounds              |        |                |          |        |          |          |
|                               |        |                |          |        |          | Qvalue   |
| 11) Tert butyl alcohol        | 2.934  | 59             | 126      | 0.262  | ug/l #   | 78       |
| 16) Acetone                   | 2.379  | 43             | 585      | 0.693  | ug/l #   | 76       |
| 20) Methylene Chloride        | 2.794  | 84             | 432      | 0.230  | ug/l #   | 82       |
| 25) 2-Butanone                | 4.568  | 43             | 511      | 0.373  | ug/l #   | 51       |
| 31) Cyclohexane               | 5.543  | 56             | 3273     | 1.162  | ug/l #   | 1        |
| 36) 1,1-Dichloropropene       | 5.549  | 75             | 11578    | 4.488  | ug/l #   | 51       |
| 38) Carbon Tetrachloride      | 5.555  | 117            | 14285    | 5.209  | ug/l #   | 16       |
| 67) Ethyl Benzene             | 10.195 | 91             | 3651     | 0.382  | ug/l     | 97       |
| 68) m/p-Xylenes               | 10.305 | 106            | 5095     | 1.430  | ug/l     | 91       |
| 69) o-Xylene                  | 10.646 | 106            | 759      | 0.213  | ug/l     | 98       |
| 76) 1,2,3-Trichloropropane    | 11.079 | 75             | 60302    | 23.627 | ug/l #   | 38       |
| 78) n-propylbenzene           | 11.304 | 91             | 3357     | 0.323  | ug/l     | 96       |
| 79) 2-Chlorotoluene           | 11.378 | 91             | 1702     | 0.270  | ug/l #   | 42       |
| 80) 1,3,5-Trimethylbenzene    | 11.451 | 105            | 3643     | 0.485  | ug/l     | 98       |
| 81) trans-1,4-Dichloro-2-b... | 11.079 | 75             | 60302    | 53.552 | ug/l #   | 5        |
| 84) 1,2,4-Trimethylbenzene    | 11.749 | 105            | 11779    | 1.568  | ug/l     | 97       |
| 89) n-Butylbenzene            | 12.329 | 91             | 1742     | 0.257  | ug/l #   | 45       |
| 95) Naphthalene               | 13.780 | 128            | 3773     | 0.481  | ug/l #   | 94       |
| -----                         |        |                |          |        |          |          |

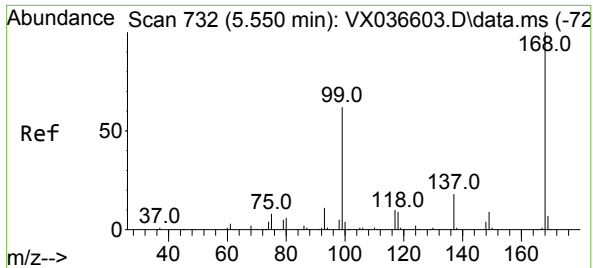
(#) = qualifier out of range (m) = manual integration (+) = signals summed

Data Path : Z:\voasrv\HPCHEM1\MSVOA\_X\Data\VX080823\  
 Data File : VX036876.D  
 Acq On : 08 Aug 2023 20:02  
 Operator : JC/MD  
 Sample : IBLK  
 Misc : 5.0mL/MSVOA\_X/WATER  
 ALS Vial : 26 Sample Multiplier: 1

Instrument :  
 MSVOA\_X  
 ClientSampleId :  
 IBLK

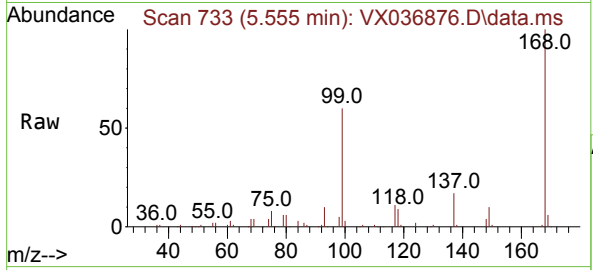
Quant Time: Aug 09 04:21:16 2023  
 Quant Method : Z:\voasrv\HPCHEM1\MSVOA\_X\Method\82X072123W.M  
 Quant Title : SW846 8260  
 QLast Update : Fri Jul 21 12:14:12 2023  
 Response via : Initial Calibration



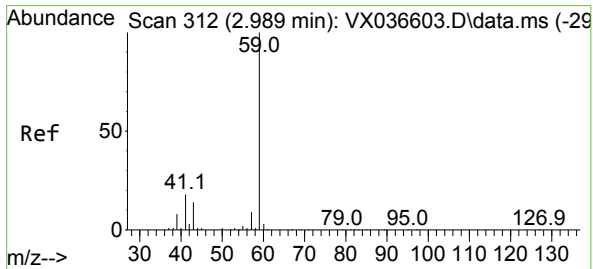
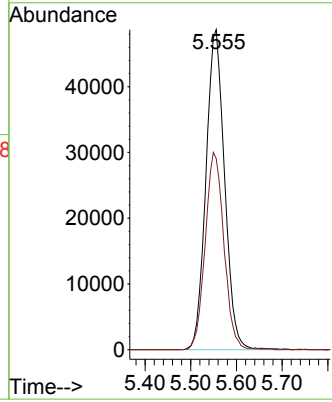
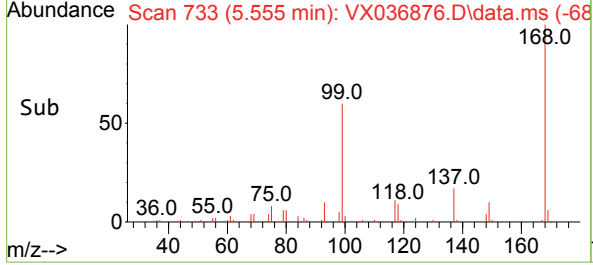


#1  
 Pentafluorobenzene  
 Concen: 50.000 ug/l  
 RT: 5.555 min Scan# 71  
 Delta R.T. 0.005 min  
 Lab File: VX036876.D  
 Acq: 08 Aug 2023 20:02

Instrument : MSVOA\_X  
 ClientSampleId : IBLK

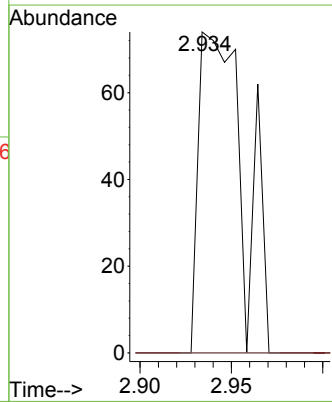
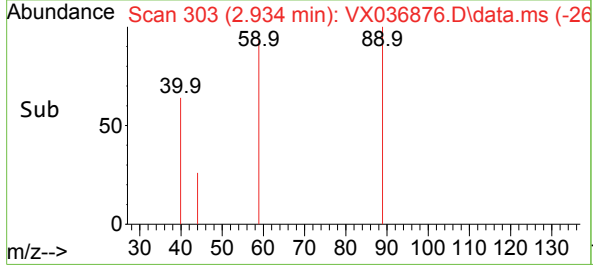
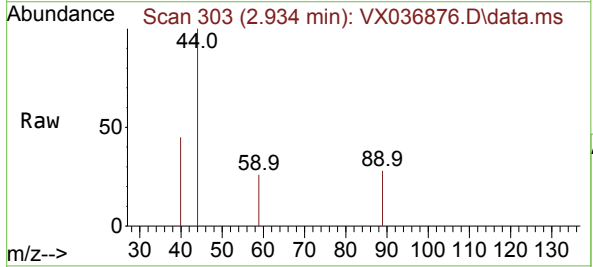


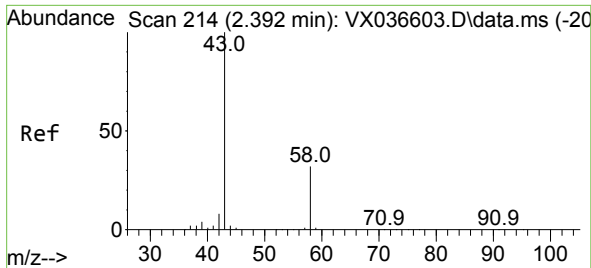
Tgt Ion:168 Resp: 137495  
 Ion Ratio Lower Upper  
 168 100  
 99 59.7 56.6 85.0



#11  
 Tert butyl alcohol  
 Concen: 0.262 ug/l  
 RT: 2.934 min Scan# 303  
 Delta R.T. -0.055 min  
 Lab File: VX036876.D  
 Acq: 08 Aug 2023 20:02

Tgt Ion: 59 Resp: 126  
 Ion Ratio Lower Upper  
 59 100  
 57 0.0 6.0 9.0#

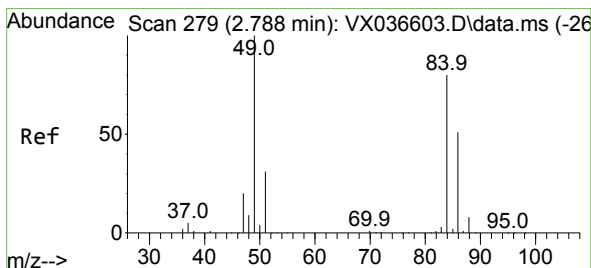
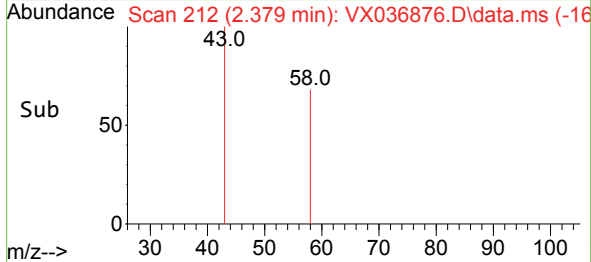
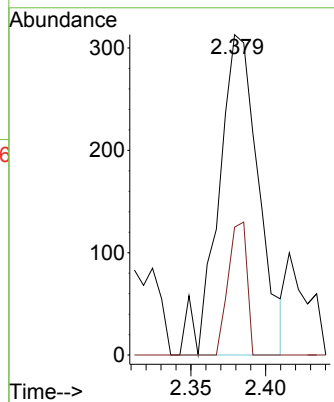
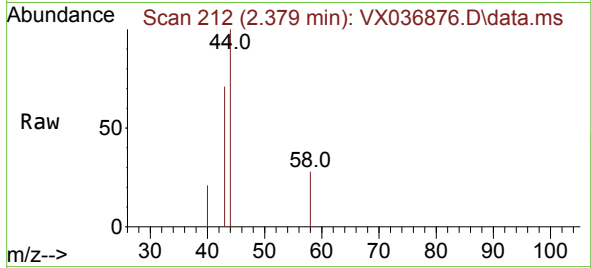




#16  
 Acetone  
 Concen: 0.693 ug/l  
 RT: 2.379 min Scan# 216  
 Delta R.T. -0.013 min  
 Lab File: VX036876.D  
 Acq: 08 Aug 2023 20:02

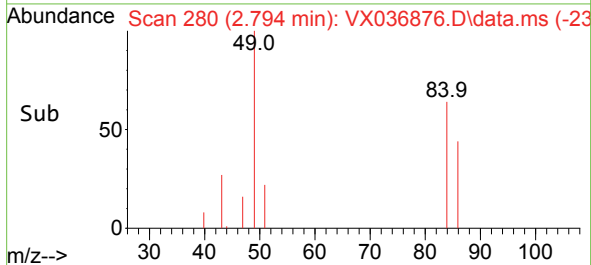
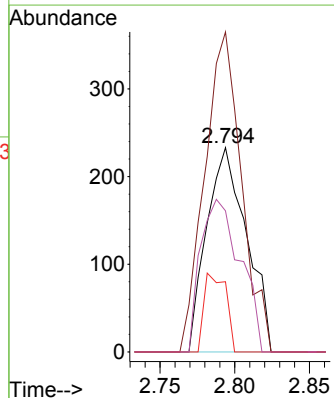
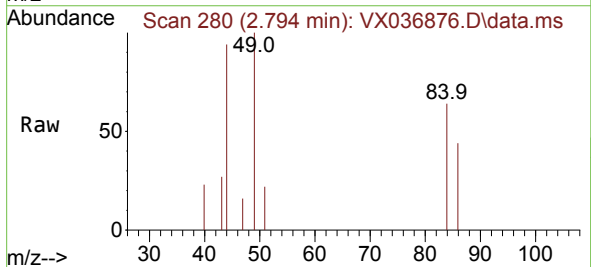
Instrument : MSVOA\_X  
 ClientSampleId : IBLK

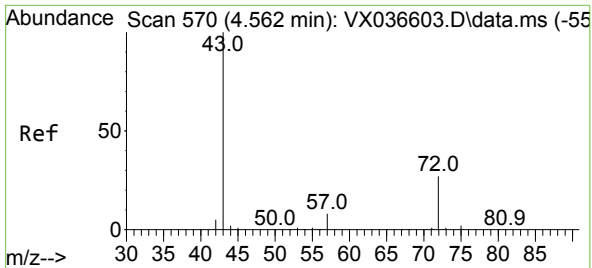
Tgt Ion: 43 Resp: 585  
 Ion Ratio Lower Upper  
 43 100  
 58 39.9 21.9 32.9#



#20  
 Methylene Chloride  
 Concen: 0.230 ug/l  
 RT: 2.794 min Scan# 280  
 Delta R.T. 0.006 min  
 Lab File: VX036876.D  
 Acq: 08 Aug 2023 20:02

Tgt Ion: 84 Resp: 432  
 Ion Ratio Lower Upper  
 84 100  
 49 156.7 103.6 155.4#  
 51 34.3 33.8 50.6  
 86 69.1 49.4 74.0

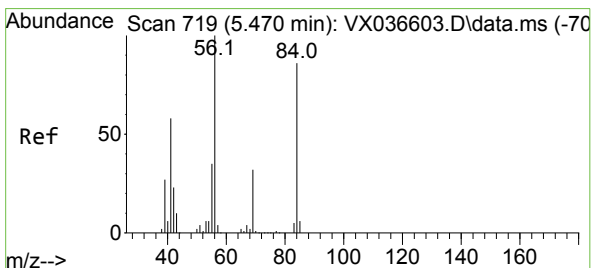
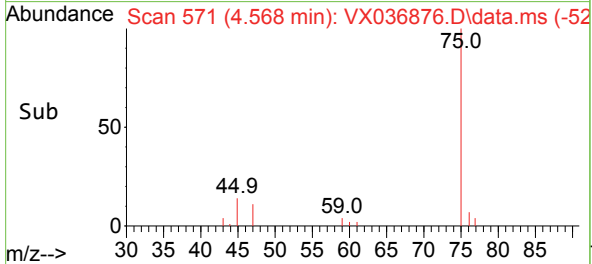
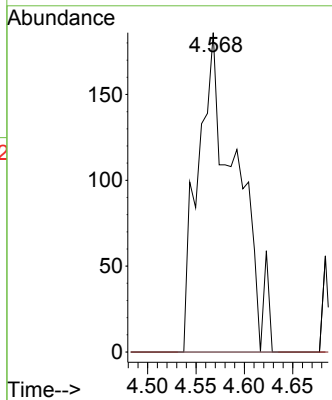
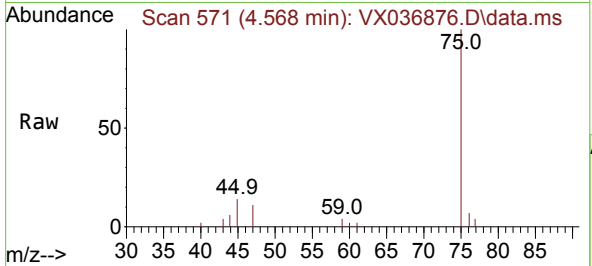




#25  
 2-Butanone  
 Concen: 0.373 ug/l  
 RT: 4.568 min Scan# 511  
 Delta R.T. 0.006 min  
 Lab File: VX036876.D  
 Acq: 08 Aug 2023 20:02

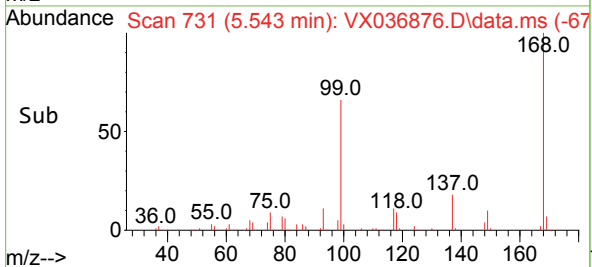
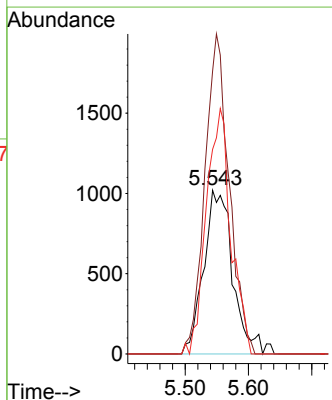
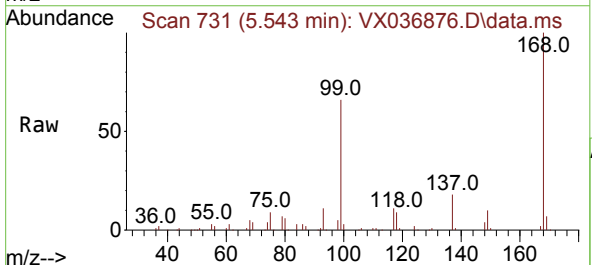
Instrument : MSVOA\_X  
 ClientSampleId : IBLK

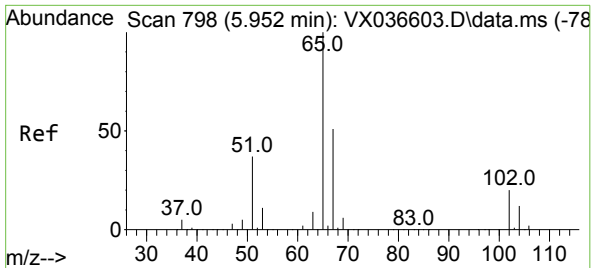
Tgt Ion: 43 Resp: 511  
 Ion Ratio Lower Upper  
 43 100  
 72 0.0 19.4 29.2#



#31  
 Cyclohexane  
 Concen: 1.162 ug/l  
 RT: 5.543 min Scan# 731  
 Delta R.T. 0.073 min  
 Lab File: VX036876.D  
 Acq: 08 Aug 2023 20:02

Tgt Ion: 56 Resp: 3273  
 Ion Ratio Lower Upper  
 56 100  
 69 172.8 23.4 35.2#  
 84 125.0 65.9 98.9#

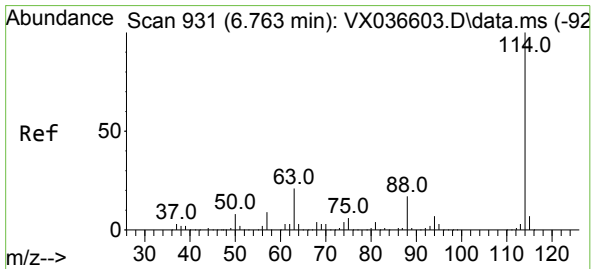
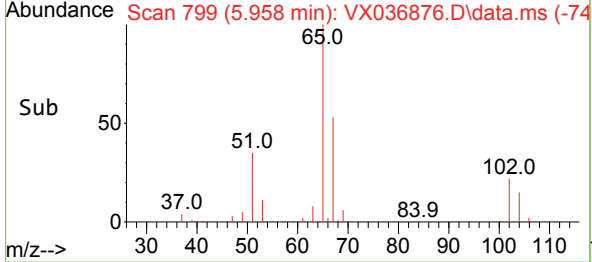
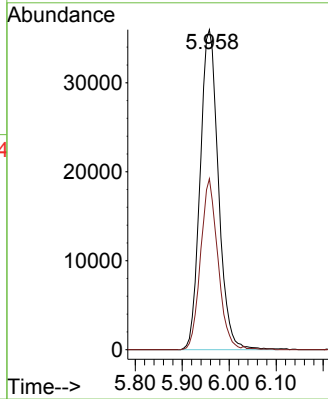
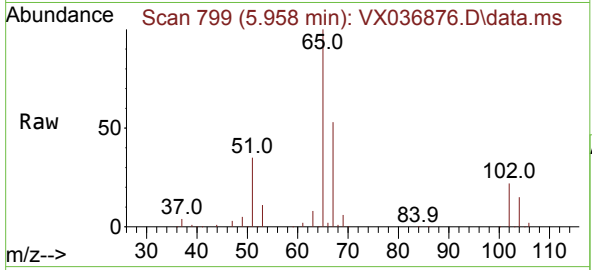




#33  
 1,2-Dichloroethane-d4  
 Concen: 47.703 ug/l  
 RT: 5.958 min Scan# 798  
 Delta R.T. 0.006 min  
 Lab File: VX036876.D  
 Acq: 08 Aug 2023 20:02

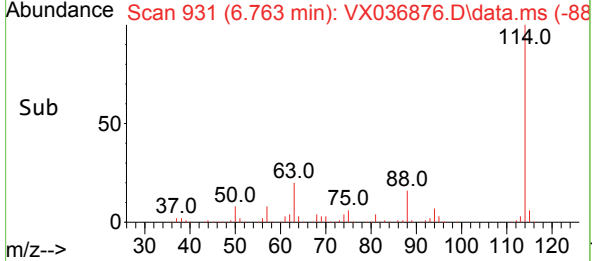
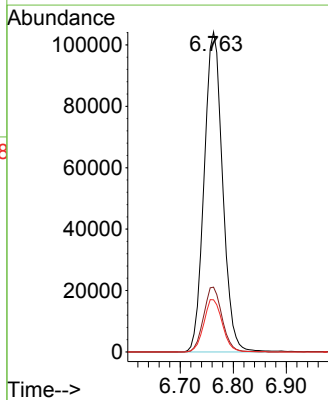
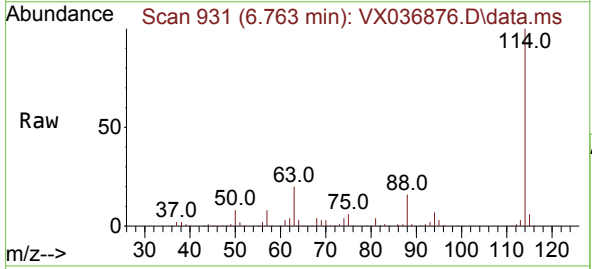
Instrument : MSVOA\_X  
 ClientSampleId : IBLK

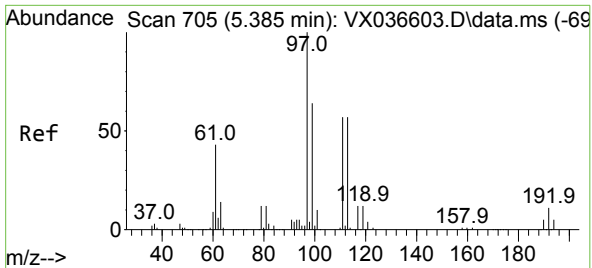
Tgt Ion: 65 Resp: 97049  
 Ion Ratio Lower Upper  
 65 100  
 67 50.9 0.0 100.2



#34  
 1,4-Difluorobenzene  
 Concen: 50.000 ug/l  
 RT: 6.763 min Scan# 931  
 Delta R.T. -0.000 min  
 Lab File: VX036876.D  
 Acq: 08 Aug 2023 20:02

Tgt Ion:114 Resp: 251788  
 Ion Ratio Lower Upper  
 114 100  
 63 20.2 0.0 45.0  
 88 16.3 0.0 36.6



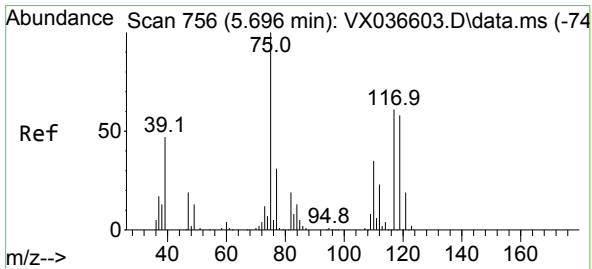
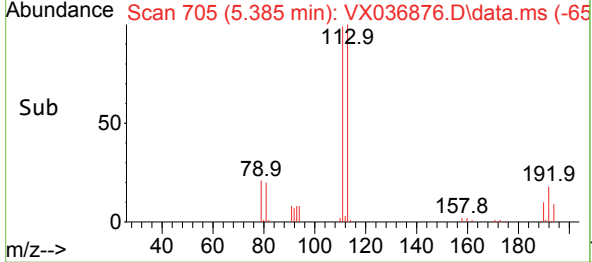
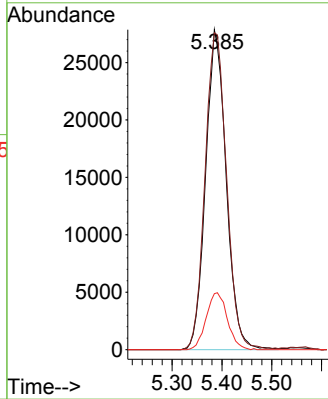
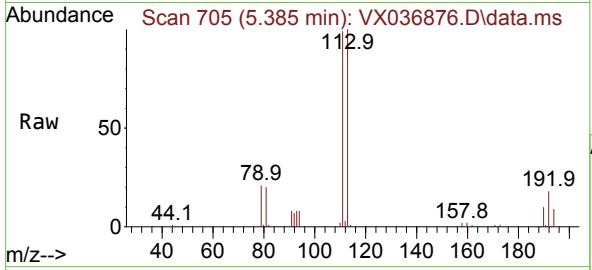


#35  
 Dibromofluoromethane  
 Concen: 46.090 ug/l  
 RT: 5.385 min Scan# 705  
 Delta R.T. -0.000 min  
 Lab File: VX036876.D  
 Acq: 08 Aug 2023 20:02

Instrument : MSVOA\_X  
 ClientSampleId : IBLK

Tgt Ion: 113 Resp: 79766

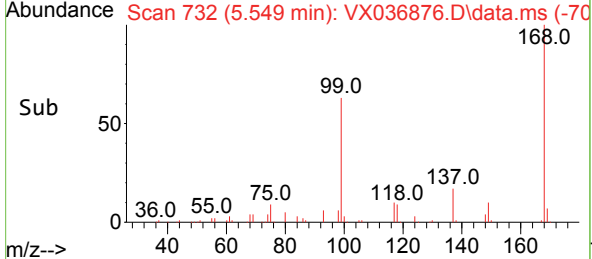
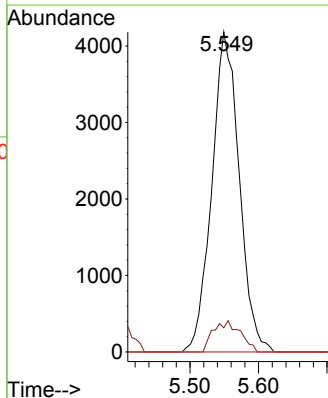
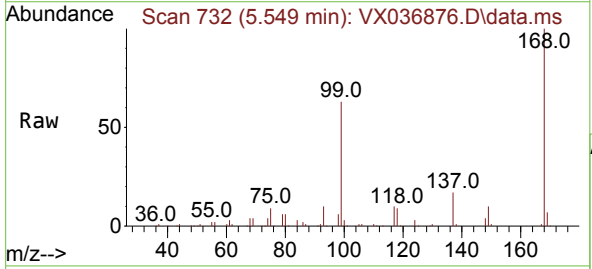
| Ion | Ratio | Lower | Upper |
|-----|-------|-------|-------|
| 113 | 100   |       |       |
| 111 | 103.5 | 82.9  | 124.3 |
| 192 | 18.3  | 13.3  | 19.9  |

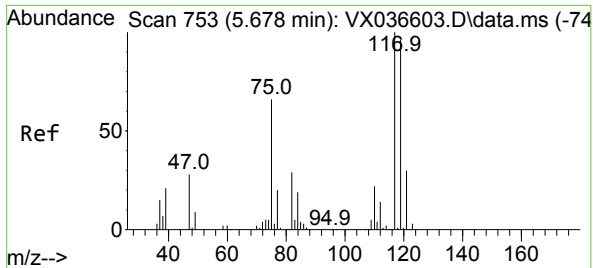


#36  
 1,1-Dichloropropene  
 Concen: 4.488 ug/l  
 RT: 5.549 min Scan# 732  
 Delta R.T. -0.147 min  
 Lab File: VX036876.D  
 Acq: 08 Aug 2023 20:02

Tgt Ion: 75 Resp: 11578

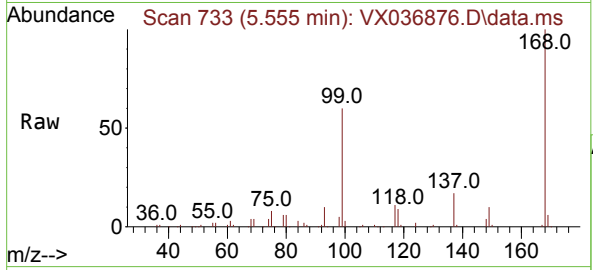
| Ion | Ratio | Lower | Upper |
|-----|-------|-------|-------|
| 75  | 100   |       |       |
| 110 | 9.7   | 17.0  | 50.9# |
| 77  | 0.0   | 24.7  | 37.1# |



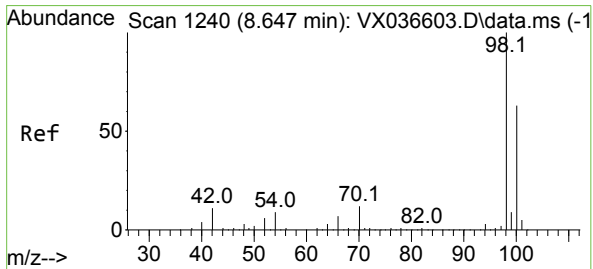
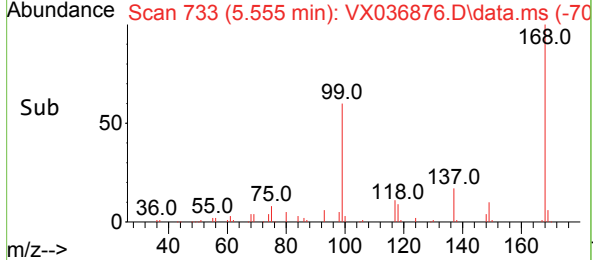
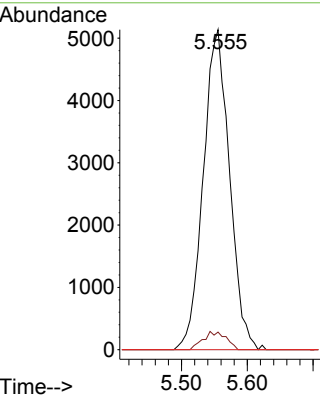


#38  
 Carbon Tetrachloride  
 Concen: 5.209 ug/l  
 RT: 5.555 min Scan# 71  
 Delta R.T. -0.122 min  
 Lab File: VX036876.D  
 Acq: 08 Aug 2023 20:02

Instrument : MSVOA\_X  
 ClientSampleId : IBLK

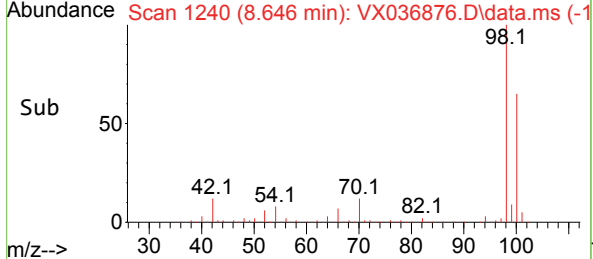
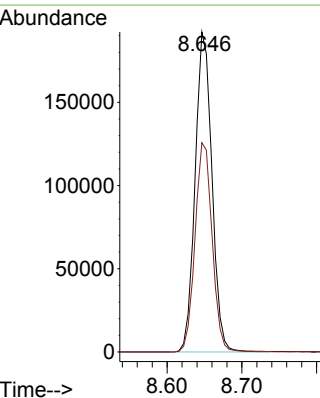
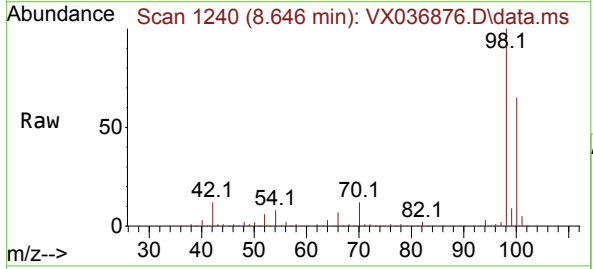


Tgt Ion:117 Resp: 14285  
 Ion Ratio Lower Upper  
 117 100  
 119 5.5 78.2 117.2#  
 121 0.0 24.4 36.6#

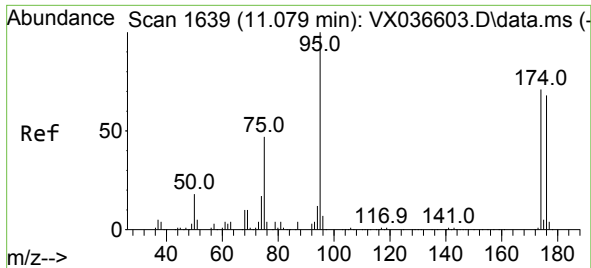


#50  
 Toluene-d8  
 Concen: 48.940 ug/l  
 RT: 8.646 min Scan# 1240  
 Delta R.T. -0.000 min  
 Lab File: VX036876.D  
 Acq: 08 Aug 2023 20:02

Tgt Ion: 98 Resp: 300358  
 Ion Ratio Lower Upper  
 98 100  
 100 66.5 53.1 79.7





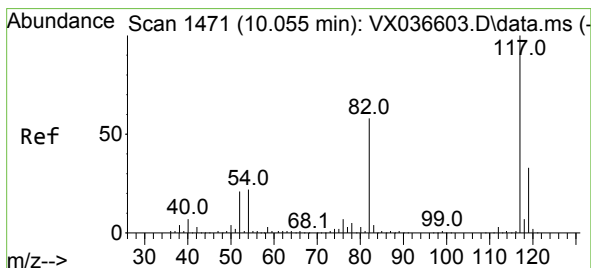
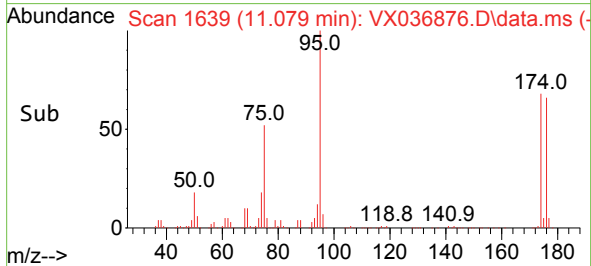
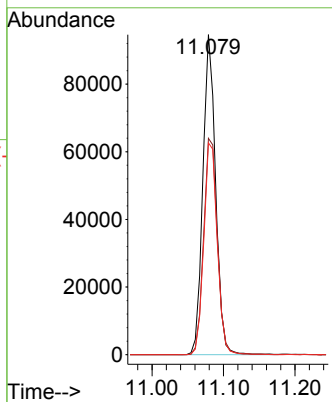
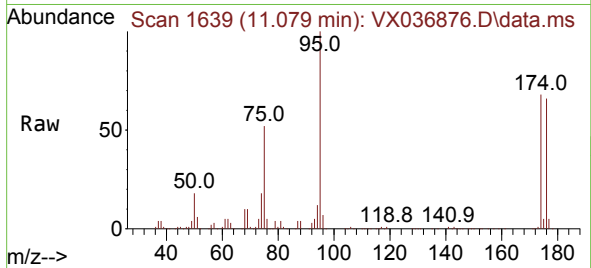


#62  
 4-Bromofluorobenzene  
 Concen: 50.690 ug/l  
 RT: 11.079 min Scan# 1639  
 Delta R.T. -0.000 min  
 Lab File: VX036876.D  
 Acq: 08 Aug 2023 20:02

Instrument : MSVOA\_X  
 ClientSampleId : IBLK

Tgt Ion: 95 Resp: 117373

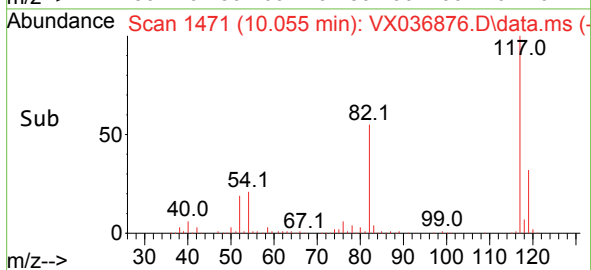
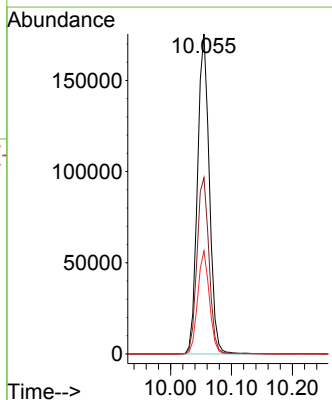
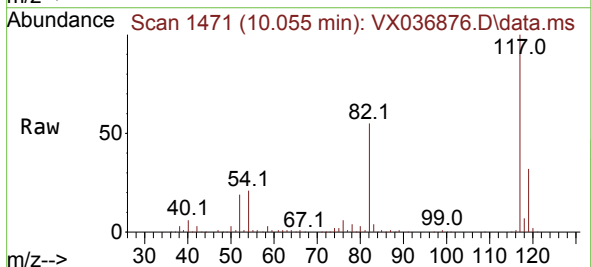
| Ion | Ratio | Lower | Upper |
|-----|-------|-------|-------|
| 95  | 100   |       |       |
| 174 | 72.8  | 0.0   | 135.6 |
| 176 | 70.1  | 0.0   | 131.0 |

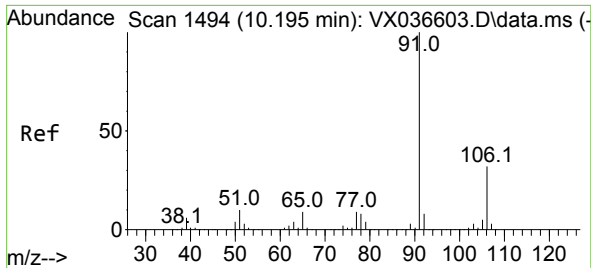


#63  
 Chlorobenzene-d5  
 Concen: 50.000 ug/l  
 RT: 10.055 min Scan# 1471  
 Delta R.T. -0.000 min  
 Lab File: VX036876.D  
 Acq: 08 Aug 2023 20:02

Tgt Ion: 117 Resp: 237116

| Ion | Ratio | Lower | Upper |
|-----|-------|-------|-------|
| 117 | 100   |       |       |
| 82  | 55.1  | 46.2  | 69.4  |
| 119 | 32.2  | 25.5  | 38.3  |

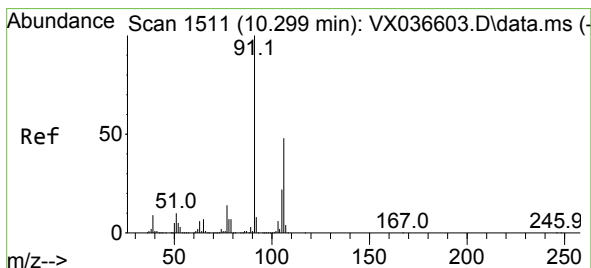
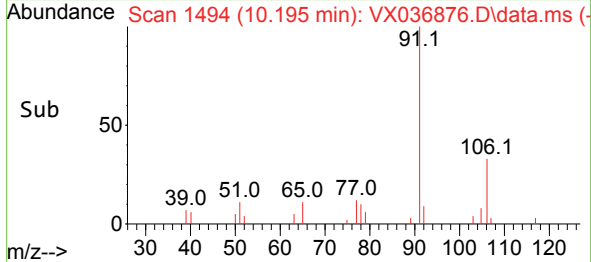
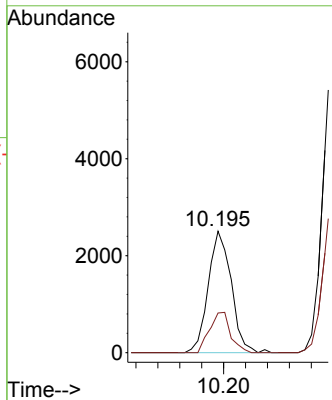
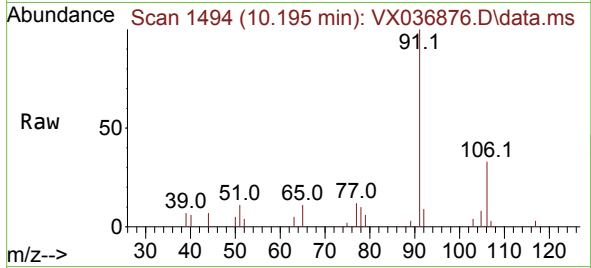




#67  
 Ethyl Benzene  
 Concen: 0.382 ug/l  
 RT: 10.195 min Scan# 1494  
 Delta R.T. -0.000 min  
 Lab File: VX036876.D  
 Acq: 08 Aug 2023 20:02

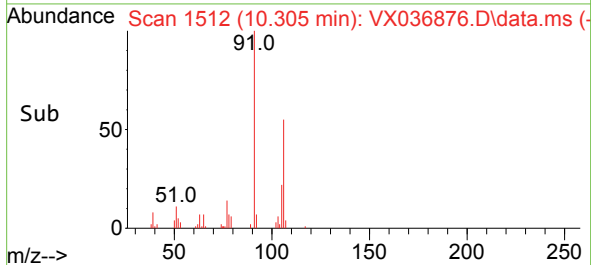
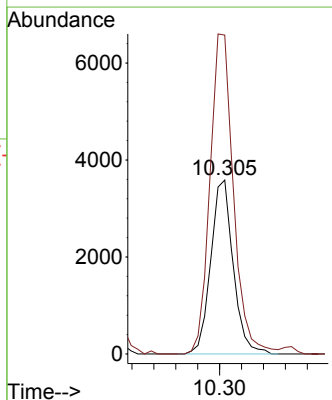
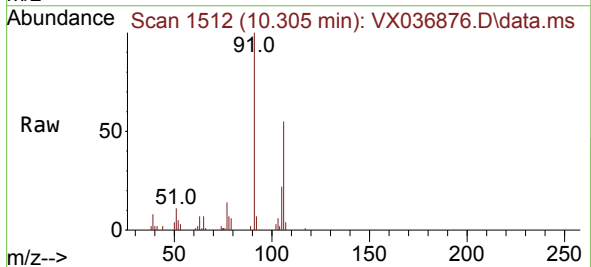
Instrument : MSVOA\_X  
 ClientSampleId : IBLK

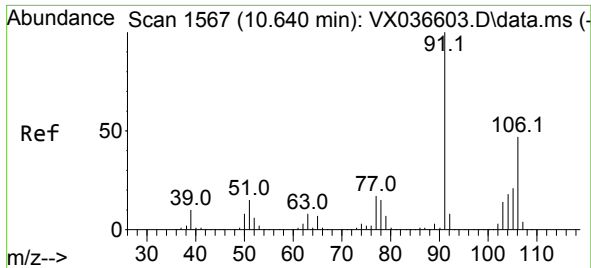
Tgt Ion: 91 Resp: 3651  
 Ion Ratio Lower Upper  
 91 100  
 106 32.6 24.9 37.3



#68  
 m/p-Xylenes  
 Concen: 1.430 ug/l  
 RT: 10.305 min Scan# 1512  
 Delta R.T. 0.006 min  
 Lab File: VX036876.D  
 Acq: 08 Aug 2023 20:02

Tgt Ion: 106 Resp: 5095  
 Ion Ratio Lower Upper  
 106 100  
 91 193.1 165.5 248.3

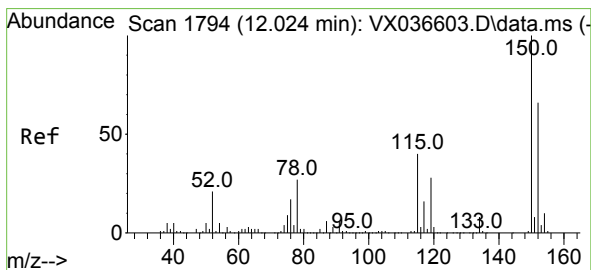
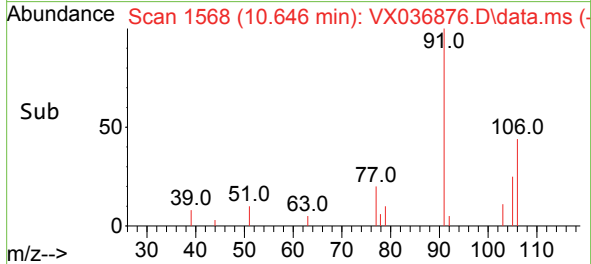
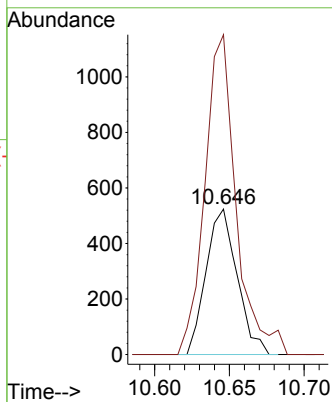
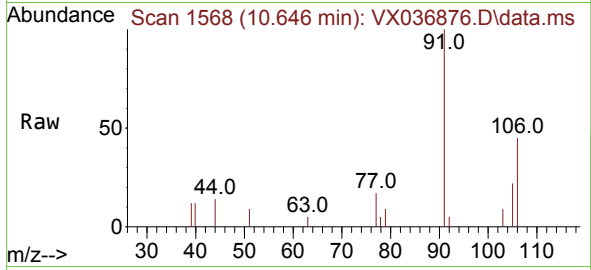




#69  
 o-Xylene  
 Concen: 0.213 ug/l  
 RT: 10.646 min Scan# 11  
 Delta R.T. 0.006 min  
 Lab File: VX036876.D  
 Acq: 08 Aug 2023 20:02

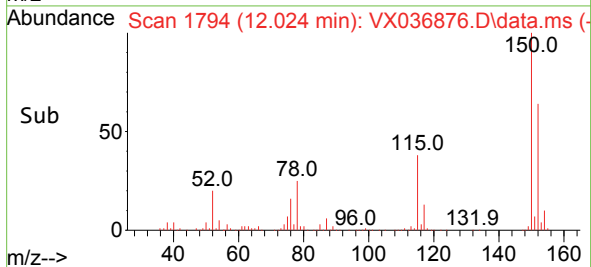
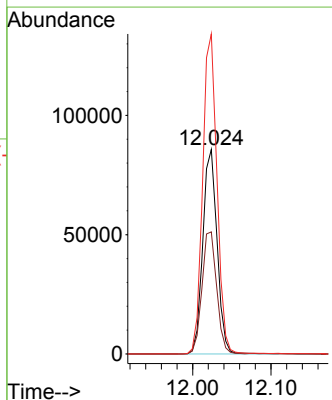
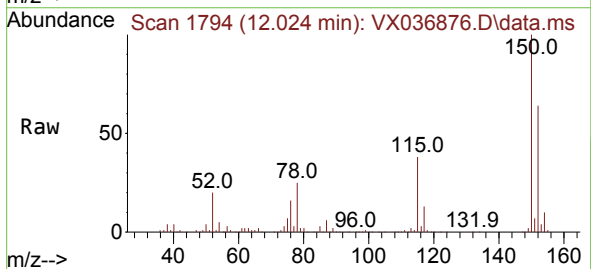
Instrument : MSVOA\_X  
 ClientSampleId : IBLK

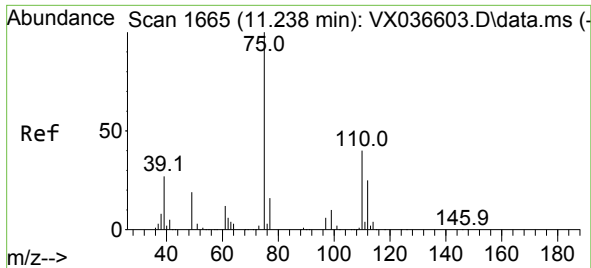
Tgt Ion:106 Resp: 759  
 Ion Ratio Lower Upper  
 106 100  
 91 220.6 108.9 326.8



#72  
 1,4-Dichlorobenzene-d4  
 Concen: 50.000 ug/l  
 RT: 12.024 min Scan# 1794  
 Delta R.T. -0.000 min  
 Lab File: VX036876.D  
 Acq: 08 Aug 2023 20:02

Tgt Ion:152 Resp: 108508  
 Ion Ratio Lower Upper  
 152 100  
 115 61.4 43.3 129.9  
 150 157.0 0.0 345.0

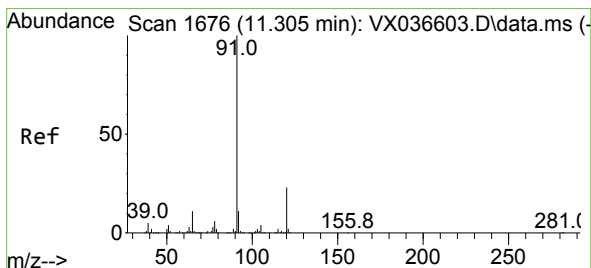
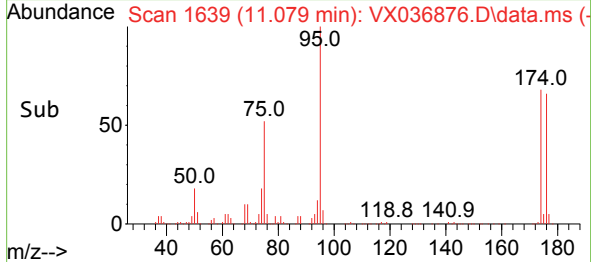
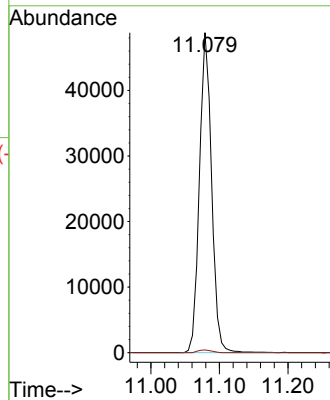
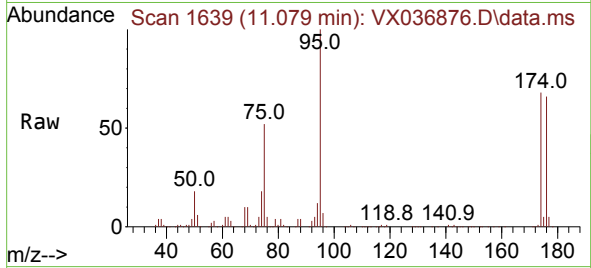




#76  
 1,2,3-Trichloropropane  
 Concen: 23.627 ug/l  
 RT: 11.079 min Scan# 1639  
 Delta R.T. -0.159 min  
 Lab File: VX036876.D  
 Acq: 08 Aug 2023 20:02

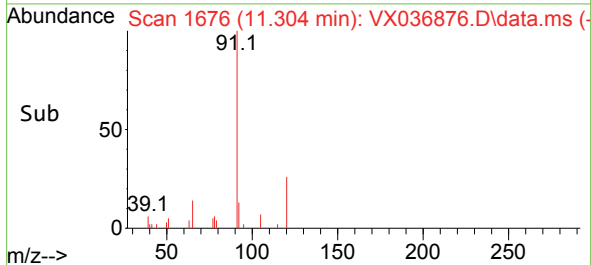
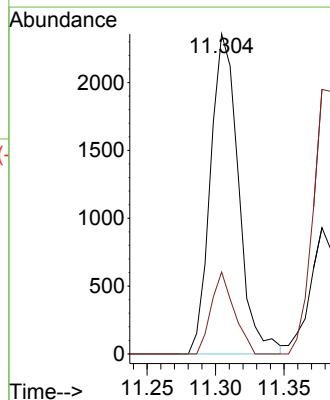
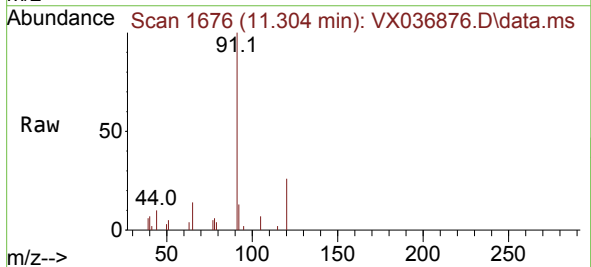
Instrument :  
 MSVOA\_X  
 ClientSampleId :  
 IBLK

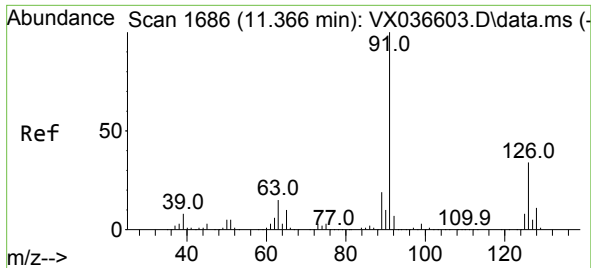
Tgt Ion: 75 Resp: 60302  
 Ion Ratio Lower Upper  
 75 100  
 77 1.0 19.1 57.5#



#78  
 n-propylbenzene  
 Concen: 0.323 ug/l  
 RT: 11.304 min Scan# 1676  
 Delta R.T. -0.000 min  
 Lab File: VX036876.D  
 Acq: 08 Aug 2023 20:02

Tgt Ion: 91 Resp: 3357  
 Ion Ratio Lower Upper  
 91 100  
 120 20.9 11.5 34.4

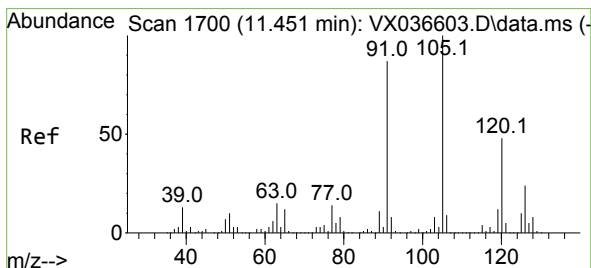
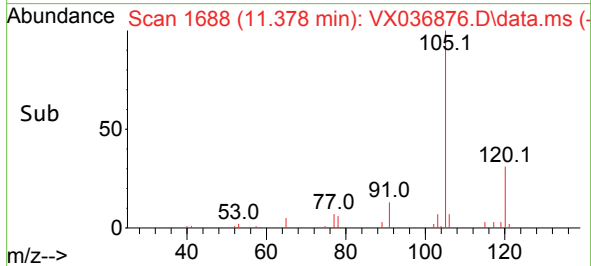
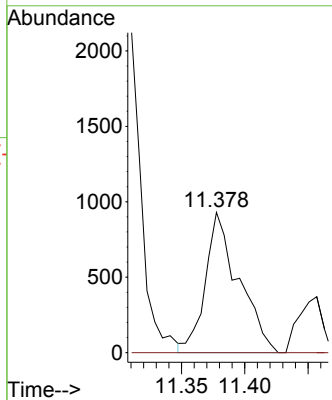
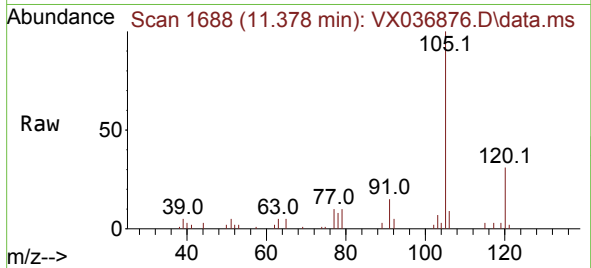




#79  
 2-Chlorotoluene  
 Concen: 0.270 ug/l  
 RT: 11.378 min Scan# 1688  
 Delta R.T. 0.012 min  
 Lab File: VX036876.D  
 Acq: 08 Aug 2023 20:02

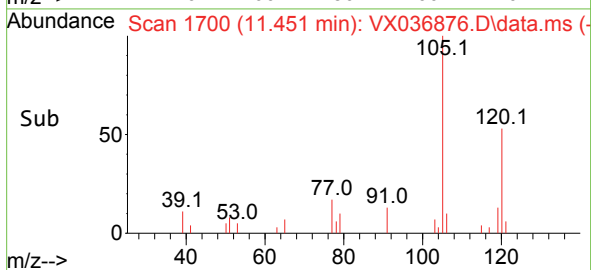
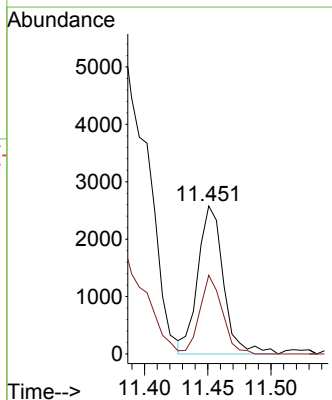
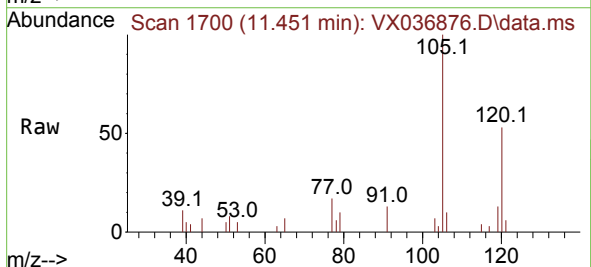
Instrument : MSVOA\_X  
 ClientSampleId : IBLK

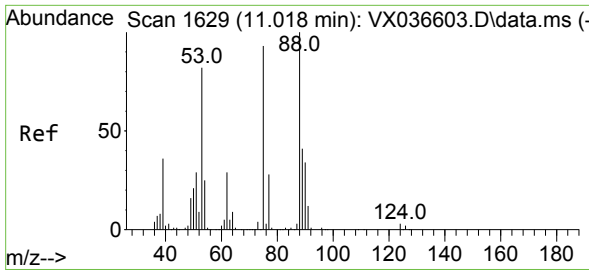
Tgt Ion: 91 Resp: 1702  
 Ion Ratio Lower Upper  
 91 100  
 126 0.0 16.3 48.8#



#80  
 1,3,5-Trimethylbenzene  
 Concen: 0.485 ug/l  
 RT: 11.451 min Scan# 1700  
 Delta R.T. -0.000 min  
 Lab File: VX036876.D  
 Acq: 08 Aug 2023 20:02

Tgt Ion: 105 Resp: 3643  
 Ion Ratio Lower Upper  
 105 100  
 120 46.7 24.1 72.3

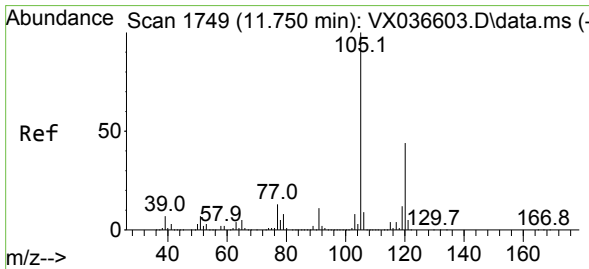
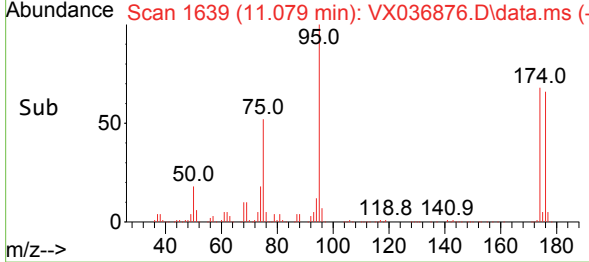
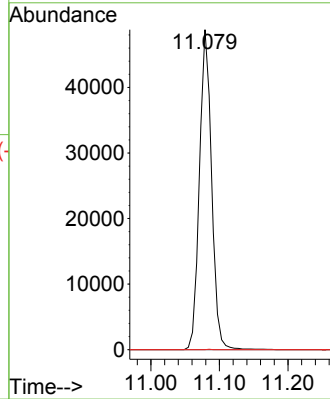
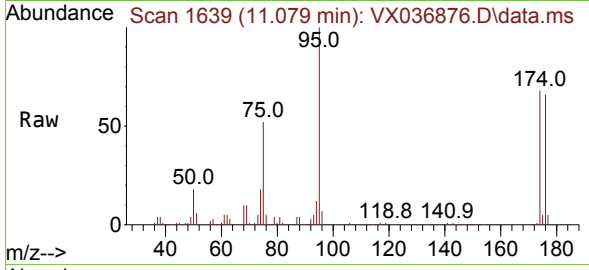




#81  
 trans-1,4-Dichloro-2-butene  
 Concen: 53.552 ug/l  
 RT: 11.079 min Scan# 1639  
 Delta R.T. 0.061 min  
 Lab File: VX036876.D  
 Acq: 08 Aug 2023 20:02

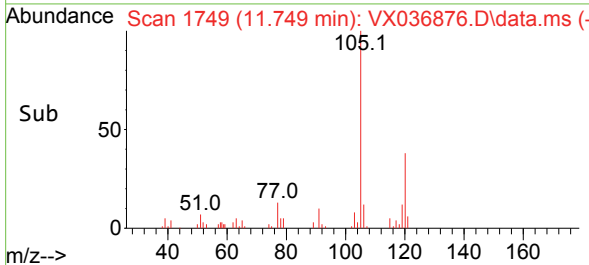
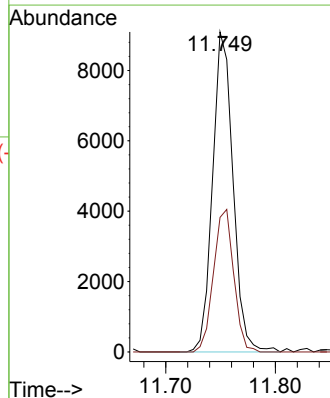
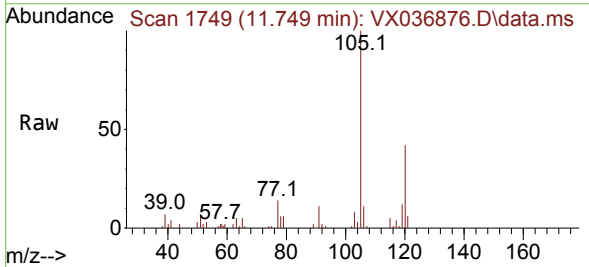
Instrument : MSVOA\_X  
 ClientSampleId : IBLK

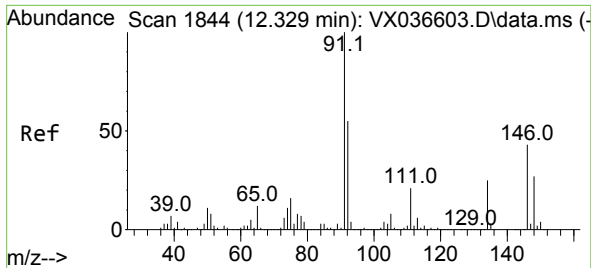
Tgt Ion: 75 Resp: 60302  
 Ion Ratio Lower Upper  
 75 100  
 53 0.0 90.5 135.7#  
 89 0.0 36.9 55.3#



#84  
 1,2,4-Trimethylbenzene  
 Concen: 1.568 ug/l  
 RT: 11.749 min Scan# 1749  
 Delta R.T. -0.000 min  
 Lab File: VX036876.D  
 Acq: 08 Aug 2023 20:02

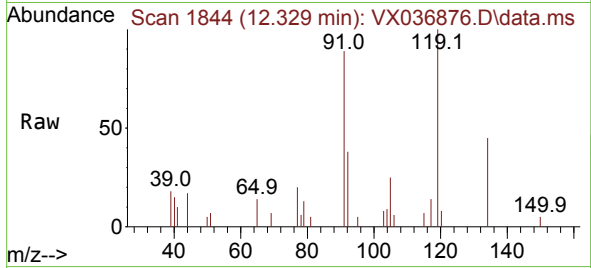
Tgt Ion: 105 Resp: 11779  
 Ion Ratio Lower Upper  
 105 100  
 120 44.1 21.2 63.6





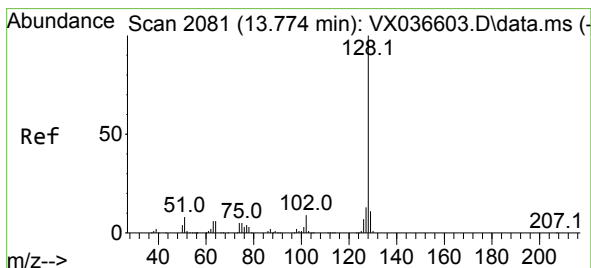
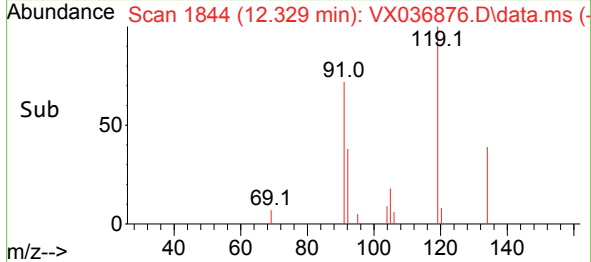
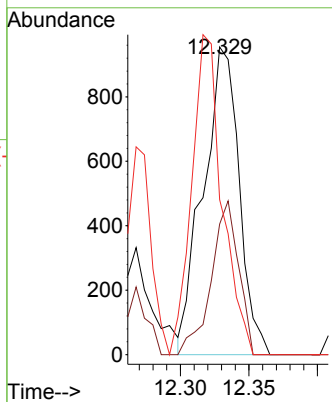
#89  
 n-Butylbenzene  
 Concen: 0.257 ug/l  
 RT: 12.329 min Scan# 11  
 Delta R.T. -0.000 min  
 Lab File: VX036876.D  
 Acq: 08 Aug 2023 20:02

Instrument : MSVOA\_X  
 ClientSampleId : IBLK



Tgt Ion: 91 Resp: 1742

| Ion | Ratio | Lower | Upper |
|-----|-------|-------|-------|
| 91  | 100   |       |       |
| 92  | 38.0  | 27.4  | 82.0  |
| 134 | 87.4  | 12.6  | 37.8# |



#95  
 Naphthalene  
 Concen: 0.481 ug/l  
 RT: 13.780 min Scan# 2082  
 Delta R.T. 0.006 min  
 Lab File: VX036876.D  
 Acq: 08 Aug 2023 20:02

Tgt Ion: 128 Resp: 3773

| Ion | Ratio | Lower | Upper |
|-----|-------|-------|-------|
| 128 | 100   |       |       |
| 127 | 10.9  | 10.3  | 15.5  |
| 129 | 8.7   | 8.8   | 13.2# |

