

Data Path : Z:\voasrv\HPCHEM1\MSVOA_X\Data\VX082322\
 Data File : VX030738.D
 Acq On : 23 Aug 2022 17:38
 Operator : JC/MD
 Sample : N4245-11
 Misc : 5.0mL/MSVOA_X/WATER
 ALS Vial : 20 Sample Multiplier: 1

Instrument :
 MSVOA_X
 ClientSampleId :
 RE117D2-20220816

Integration Parameters: RTEINT.P
 Integrator: RTE
 Smoothing : ON Filtering: 5
 Sampling : 1 Min Area: 3 % of largest Peak
 Start Thrs: 0.2 Max Peaks: 100
 Stop Thrs : 0 Peak Location: TOP

If leading or trailing edge < 100 prefer < Baseline drop else tangent >
 Peak separation: 5

Method : Z:\voasrv\HPCHEM1\MSVOA_X\Method\82X072522W.M
 Title : SW846 8260

Signal : TIC: VX030738.D\data.ms

| peak # | R.T. min | first scan | max scan | last scan | PK TY | peak height | corr. area | corr. % max. | % of total |
|--------|----------|------------|----------|-----------|-------|-------------|------------|--------------|------------|
| 1 | 1.264 | 24 | 29 | 37 | rBV3 | 11936 | 25359 | 1.98% | 0.502% |
| 2 | 5.391 | 694 | 706 | 722 | rBV2 | 149358 | 440772 | 34.41% | 8.727% |
| 3 | 5.556 | 722 | 733 | 749 | rVB2 | 130494 | 368074 | 28.73% | 7.287% |
| 4 | 5.964 | 787 | 800 | 817 | rBV | 163732 | 429486 | 33.53% | 8.503% |
| 5 | 6.769 | 923 | 932 | 943 | rBV | 255327 | 603552 | 47.12% | 11.949% |
| 6 | 8.653 | 1234 | 1241 | 1251 | rBV | 820169 | 1280982 | 100.00% | 25.362% |
| 7 | 10.055 | 1465 | 1471 | 1487 | rBV | 501783 | 674724 | 52.67% | 13.359% |
| 8 | 11.085 | 1634 | 1640 | 1652 | rBV | 576382 | 722526 | 56.40% | 14.305% |
| 9 | 12.024 | 1789 | 1794 | 1804 | rBV | 412721 | 505386 | 39.45% | 10.006% |

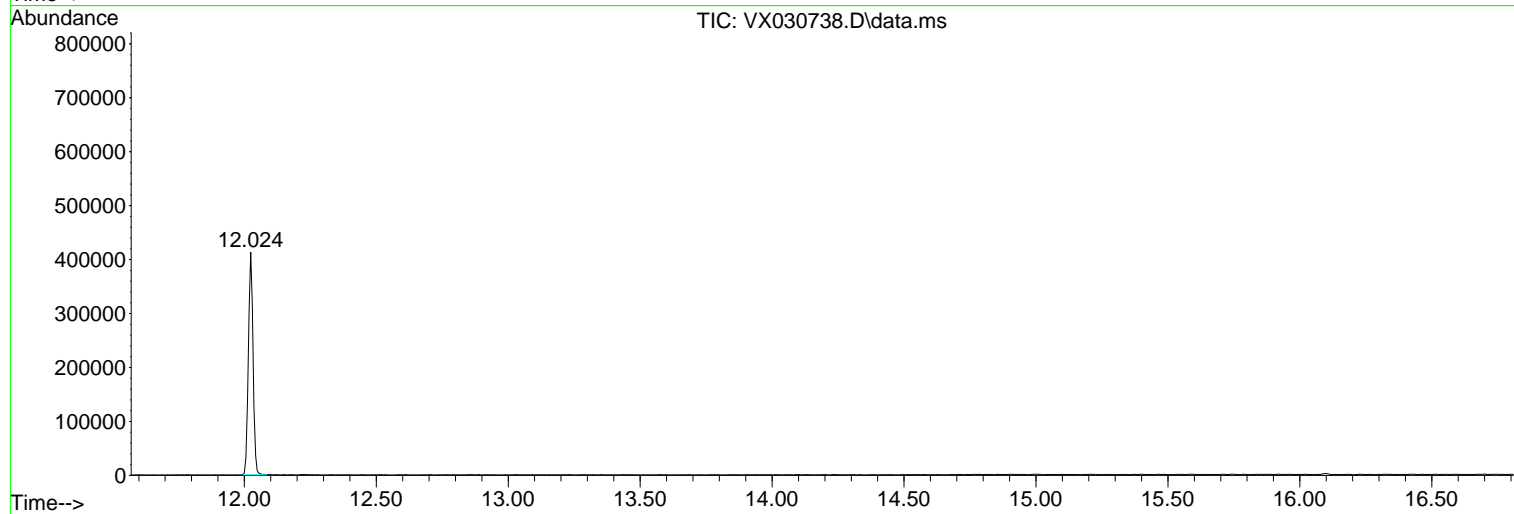
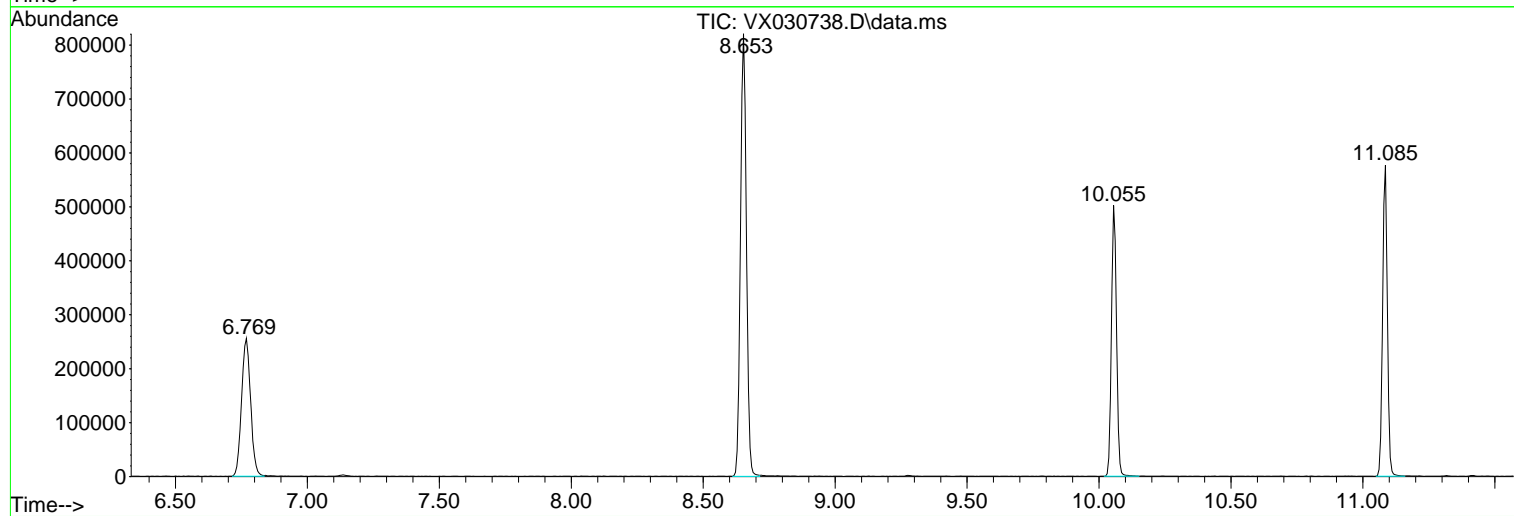
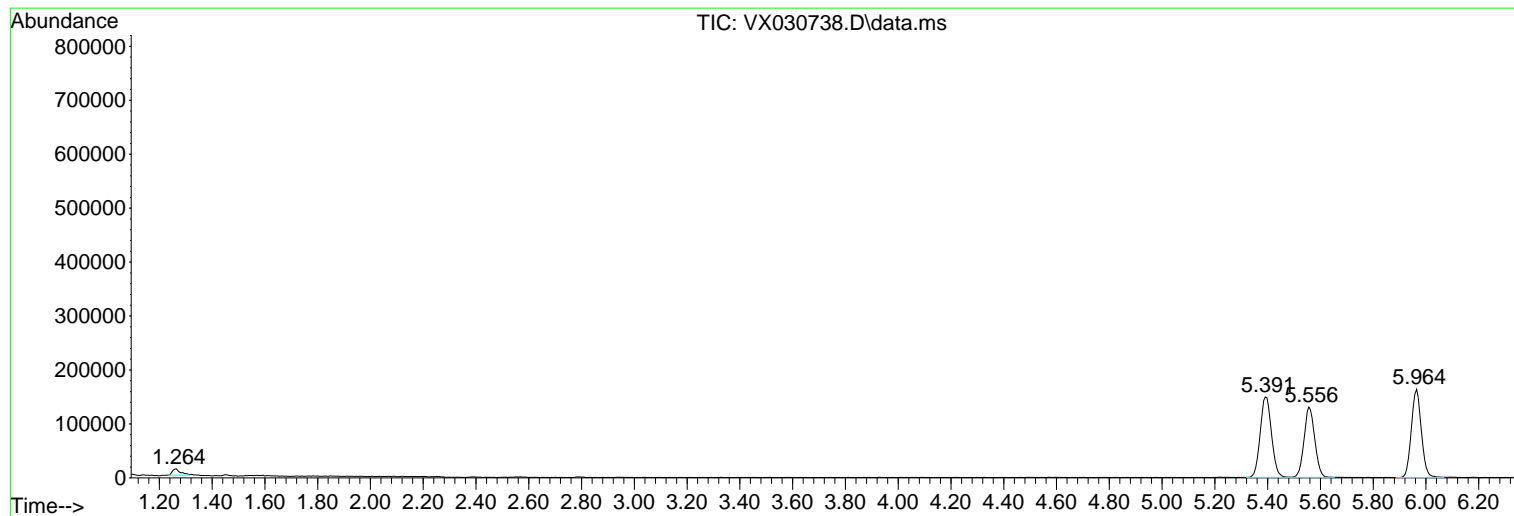
Sum of corrected areas: 5050861

Data Path : Z:\voasrv\HPCHEM1\MSVOA_X\Data\VX082322\
Data File : VX030738.D
Acq On : 23 Aug 2022 17:38
Operator : JC/MD
Sample : N4245-11
Misc : 5.0mL/MSVOA_X/WATER
ALS Vial : 20 Sample Multiplier: 1

Instrument :
MSVOA_X
ClientSampleId :
RE117D2-20220816

Quant Method : Z:\voasrv\HPCHEM1\MSVOA_X\Method\82X072522W.M
Quant Title : SW846 8260

TIC Library : C:\Database\NIST20.L
TIC Integration Parameters: LSCINT.P



Library Search Compound Report

Data Path : Z:\voasrv\HPCHEM1\MSVOA_X\Data\VX082322\
Data File : VX030738.D
Acq On : 23 Aug 2022 17:38
Operator : JC/MD
Sample : N4245-11
Misc : 5.0mL/MSVOA_X/WATER
ALS Vial : 20 Sample Multiplier: 1

Instrument :
MSVOA_X
ClientSampleId :
RE117D2-20220816

Quant Method : Z:\voasrv\HPCHEM1\MSVOA_X\Method\82X072522W.M
Quant Title : SW846 8260

TIC Library : C:\Database\NIST20.L
TIC Integration Parameters: LSCINT.P

No Library Search Compounds Detected

Data Path : Z:\voasrv\HPCHEM1\MSVOA_X\Data\VX082322\
Data File : VX030738.D
Acq On : 23 Aug 2022 17:38
Operator : JC/MD
Sample : N4245-11
Misc : 5.0mL/MSVOA_X/WATER
ALS Vial : 20 Sample Multiplier: 1

Instrument :
MSVOA_X
ClientSampleId :
RE117D2-20220816

Quant Method : Z:\voasrv\HPCHEM1\MSVOA_X\Method\82X072522W.M
Quant Title : SW846 8260

TIC Library : C:\Database\NIST0.L
TIC Integration Parameters: LSCINT.P

| TIC Top Hit name | RT | EstConc | Units | Response | # | RT | Resp | Conc |
|------------------|----|---------|-------|----------|---|----|------|------|
|------------------|----|---------|-------|----------|---|----|------|------|
