

Data Path : Z:\voasrv\HPCHEM1\MSVOA\_X\Data\VX092622\  
 Data File : VX031654.D  
 Acq On : 26 Sep 2022 17:26  
 Operator : JC/MD  
 Sample : N4641-12DL 5X  
 Misc : 6.02g/5.0mL/100uL/5.0mL/MSVOA\_X/MEOH  
 ALS Vial : 16 Sample Multiplier: 1

Instrument :  
 MSVOA\_X  
 ClientSampleId :  
 D22021-6DL

Quant Time: Sep 27 01:54:24 2022  
 Quant Method : Z:\voasrv\HPCHEM1\MSVOA\_X\Method\82X092622W.M  
 Quant Title : SW846 8260  
 QLast Update : Tue Sep 27 01:44:18 2022  
 Response via : Initial Calibration

Compound	R.T.	QIon	Response	Conc	Units	Dev(Min)
Internal Standards						
1) Pentafluorobenzene	5.556	168	39077	50.000	ug/l	0.00
34) 1,4-Difluorobenzene	6.763	114	67960	50.000	ug/l	0.00
63) Chlorobenzene-d5	10.055	117	79007	50.000	ug/l	0.00
72) 1,4-Dichlorobenzene-d4	12.024	152	57923	50.000	ug/l	0.00
System Monitoring Compounds						
33) 1,2-Dichloroethane-d4	5.952	65	55830	67.316	ug/l	0.00
Spiked Amount	50.000	Range	74 - 125	Recovery	=	134.640%#
35) Dibromofluoromethane	5.391	113	42843	52.908	ug/l	0.00
Spiked Amount	50.000	Range	75 - 124	Recovery	=	105.820%
50) Toluene-d8	8.653	98	136385	46.457	ug/l	0.00
Spiked Amount	50.000	Range	86 - 113	Recovery	=	92.920%
62) 4-Bromofluorobenzene	11.085	95	54018	50.203	ug/l	0.00
Spiked Amount	50.000	Range	83 - 123	Recovery	=	100.400%
Target Compounds						
						Qvalue
3) Chloromethane	1.288	50	150	Below Cal	#	41
5) Bromomethane	1.611	94	938	Below Cal		98
6) Chloroethane	1.654	64	18	Below Cal	#	43
7) Trichlorofluoromethane	1.874	101	127	Below Cal	#	83
10) Methyl Iodide	2.453	142	437	0.858	ug/l #	76
11) Tert butyl alcohol	2.940	59	5785	28.632	ug/l #	73
12) 1,1-Dichloroethene	2.306	96	19	Below Cal	#	1
13) Acrolein	2.331	56	74	Below Cal	#	51
14) Allyl chloride	2.770	41	916	1.340	ug/l #	22
15) Acrylonitrile	3.081	53	443	1.539	ug/l #	42
16) Acetone	2.392	43	463	Below Cal	#	45
17) Carbon Disulfide	2.508	76	480	Below Cal	#	75
18) Methyl Acetate	2.770	43	1906	2.557	ug/l #	52
19) Methyl tert-butyl Ether	3.117	73	693	0.376	ug/l #	1
20) Methylene Chloride	2.788	84	763	Below Cal	#	82
25) 2-Butanone	4.452	43	152	0.384	ug/l #	49
30) Chloroform	5.166	83	1111	0.891	ug/l #	17
31) Cyclohexane	5.477	56	12265	15.553	ug/l #	84
36) 1,1-Dichloropropene	5.550	75	3122	3.357	ug/l #	48
38) Carbon Tetrachloride	5.550	117	3780	3.607	ug/l #	17
39) Methylcyclohexane	7.385	83	30803	29.072	ug/l	92
40) Benzene	6.044	78	5278	1.848	ug/l	97
41) Methacrylonitrile	4.958	41	161	0.337	ug/l #	23
43) Isopropyl Acetate	6.348	43	479	0.324	ug/l #	61
45) 1,2-Dichloropropane	7.379	63	396	0.571	ug/l #	1
47) Bromodichloromethane	7.769	83	545	0.543	ug/l #	60
48) Methyl methacrylate	7.659	41	2711	4.175	ug/l #	36
51) 4-Methyl-2-Pentanone	8.610	43	5117	5.476	ug/l #	64
55) 1,1,2-Trichloroethane	9.104	97	7800	9.516	ug/l #	18
56) Ethyl methacrylate	9.110	69	2325	2.217	ug/l #	1
59) 2-Hexanone	9.384	43	6245	8.957	ug/l #	28
60) Dibromochloromethane	9.281	129	113	1.655	ug/l #	11
67) Ethyl Benzene	10.195	91	42788	11.427	ug/l	97
68) m/p-Xylenes	10.305	106	8474	5.633	ug/l	95
69) o-Xylene	10.640	106	709	0.482	ug/l	64
73) Isopropylbenzene	10.963	105	23029	6.148	ug/l	99

Data Path : Z:\voasrv\HPCHEM1\MSVOA\_X\Data\VX092622\  
 Data File : VX031654.D  
 Acq On : 26 Sep 2022 17:26  
 Operator : JC/MD  
 Sample : N4641-12DL 5X  
 Misc : 6.02g/5.0mL/100uL/5.0mL/MSVOA\_X/MEOH  
 ALS Vial : 16 Sample Multiplier: 1

Instrument :  
 MSVOA\_X  
 ClientSampleId :  
 D22021-6DL

Quant Time: Sep 27 01:54:24 2022  
 Quant Method : Z:\voasrv\HPCHEM1\MSVOA\_X\Method\82X092622W.M  
 Quant Title : SW846 8260  
 QLast Update : Tue Sep 27 01:44:18 2022  
 Response via : Initial Calibration

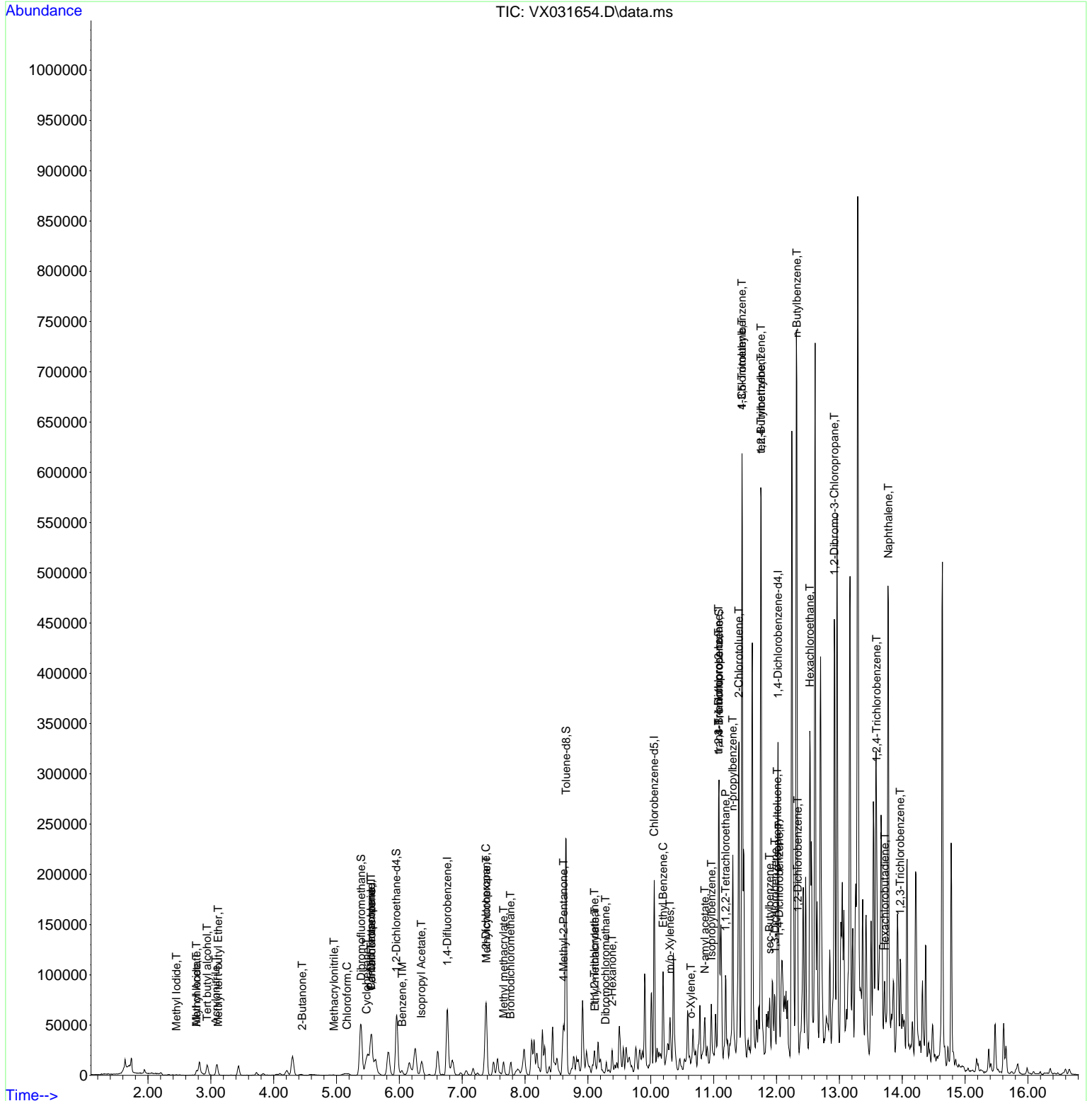
Compound	R.T.	QIon	Response	Conc	Units	Dev(Min)	
74) N-amyl acetate	10.860	43	4961	4.083	ug/l	#	1
75) 1,1,2,2-Tetrachloroethane	11.189	83	2766	2.324	ug/l	#	81
76) 1,2,3-Trichloropropane	11.079	75	28361	27.008	ug/l	#	35
78) n-propylbenzene	11.305	91	113835	27.309	ug/l		98
79) 2-Chlorotoluene	11.402	91	22697	8.818	ug/l	#	40
80) 1,3,5-Trimethylbenzene	11.451	105	246308	77.569	ug/l		99
81) trans-1,4-Dichloro-2-b...	11.079	75	28361	89.327	ug/l	#	13
82) 4-Chlorotoluene	11.451	91	29836	10.033	ug/l	#	48
83) tert-Butylbenzene	11.756	119	27811	9.082	ug/l	#	49
84) 1,2,4-Trimethylbenzene	11.756	105	235571	74.950	ug/l		98
85) sec-Butylbenzene	11.890	105	18264	4.693	ug/l	#	56
86) p-Isopropyltoluene	12.012	119	9595	2.859	ug/l		96
87) 1,3-Dichlorobenzene	11.975	146	512	0.277	ug/l	#	38
88) 1,4-Dichlorobenzene	12.042	146	555	0.287	ug/l	#	1
89) n-Butylbenzene	12.323	91	103928	37.911	ug/l	#	22
90) Hexachloroethane	12.530	117	21231	39.454	ug/l	#	15
91) 1,2-Dichlorobenzene	12.341	146	420	0.227	ug/l	#	74
92) 1,2-Dibromo-3-Chloropr...	12.920	75	1440	6.038	ug/l	#	3
93) 1,2,4-Trichlorobenzene	13.591	180	891	0.824	ug/l	#	1
94) Hexachlorobutadiene	13.725	225	427	1.013	ug/l		97
95) Naphthalene	13.780	128	306243	84.802	ug/l		99
96) 1,2,3-Trichlorobenzene	13.969	180	1017	0.917	ug/l	#	1

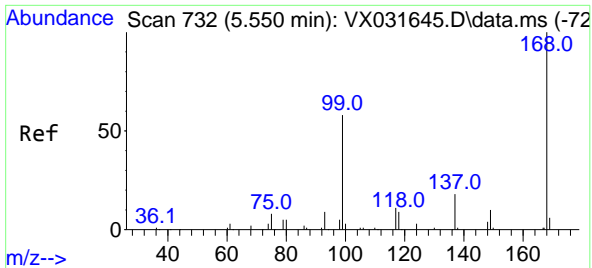
(#) = qualifier out of range (m) = manual integration (+) = signals summed

Data Path : Z:\voasrv\HPCHEM1\MSVOA\_X\Data\VX092622\  
 Data File : VX031654.D  
 Acq On : 26 Sep 2022 17:26  
 Operator : JC/MD  
 Sample : N4641-12DL 5X  
 Misc : 6.02g/5.0mL/100uL/5.0mL/MSVOA\_X/MEOH  
 ALS Vial : 16 Sample Multiplier: 1

Instrument :  
 MSVOA\_X  
 ClientSampleId :  
 D22021-6DL

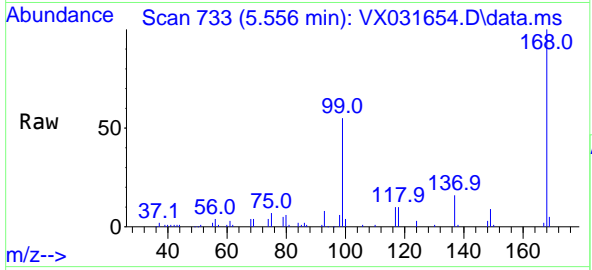
Quant Time: Sep 27 01:54:24 2022  
 Quant Method : Z:\voasrv\HPCHEM1\MSVOA\_X\Method\82X092622W.M  
 Quant Title : SW846 8260  
 QLast Update : Tue Sep 27 01:44:18 2022  
 Response via : Initial Calibration



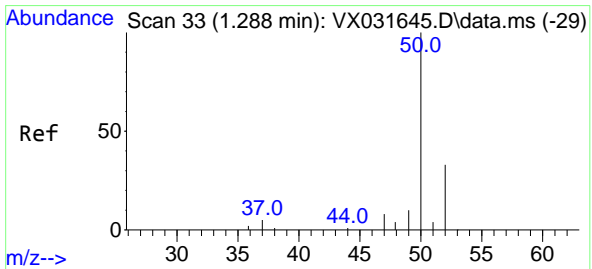
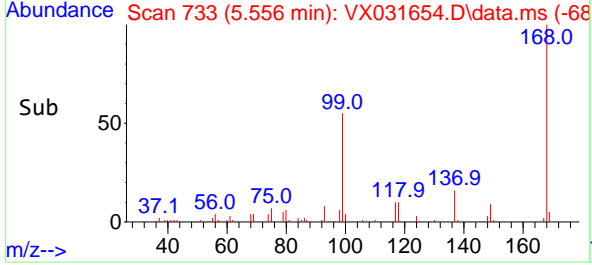
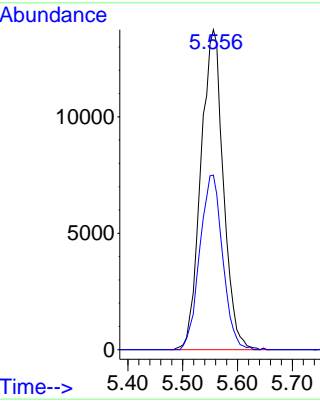


#1  
 Pentafluorobenzene  
 Concen: 50.000 ug/l  
 RT: 5.556 min Scan# 71  
 Delta R.T. -0.000 min  
 Lab File: VX031654.D  
 Acq: 26 Sep 2022 17:26

Instrument : MSVOA\_X  
 ClientSampleId : D22021-6DL

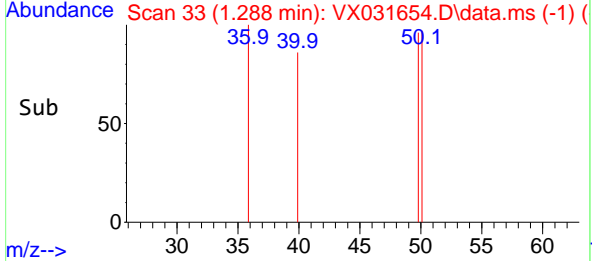
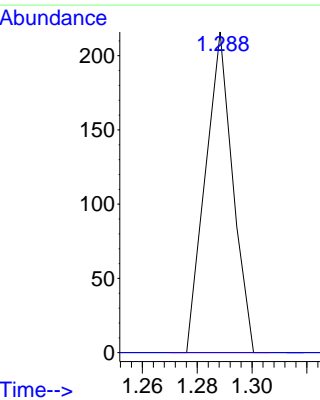
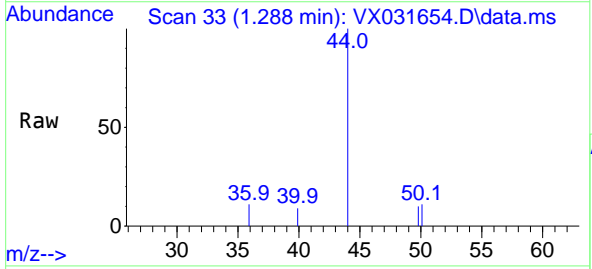


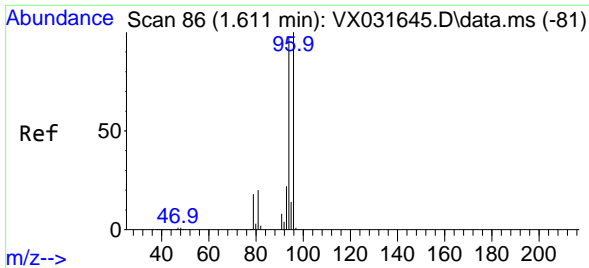
Tgt Ion:168 Resp: 39077  
 Ion Ratio Lower Upper  
 168 100  
 99 54.6 48.8 73.2



#3  
 Chloromethane  
 Concen: Below Cal  
 RT: 1.288 min Scan# 33  
 Delta R.T. 0.000 min  
 Lab File: VX031654.D  
 Acq: 26 Sep 2022 17:26

Tgt Ion: 50 Resp: 150  
 Ion Ratio Lower Upper  
 50 100  
 52 0.0 26.9 40.3#

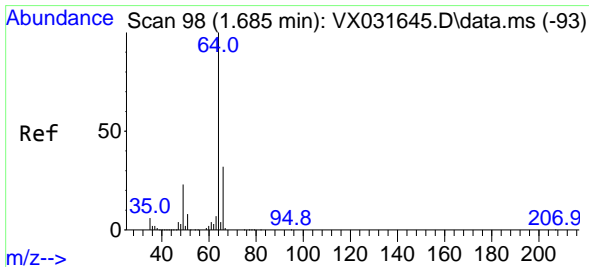
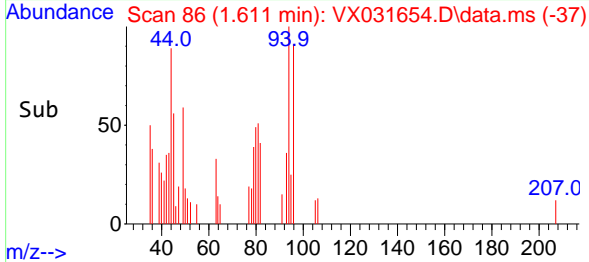
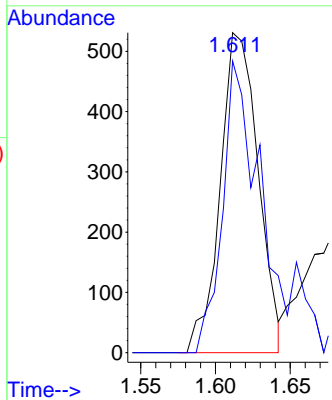
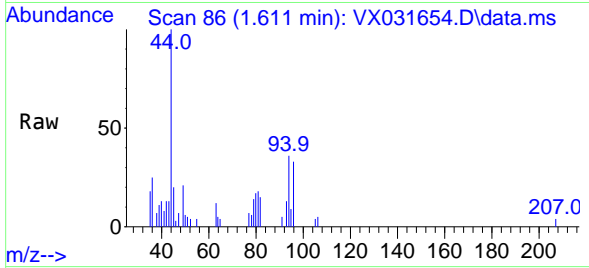




#5  
 Bromomethane  
 Concen: Below Cal  
 RT: 1.611 min Scan# 80  
 Delta R.T. 0.000 min  
 Lab File: VX031654.D  
 Acq: 26 Sep 2022 17:26

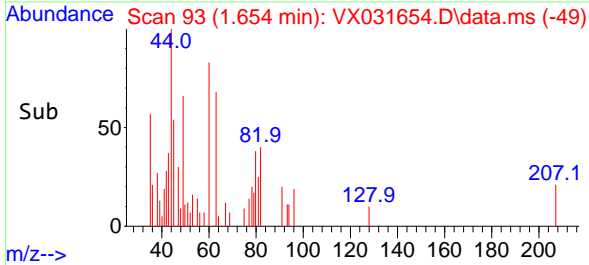
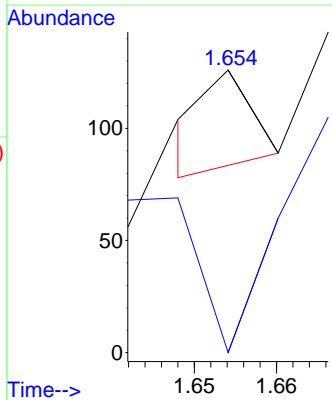
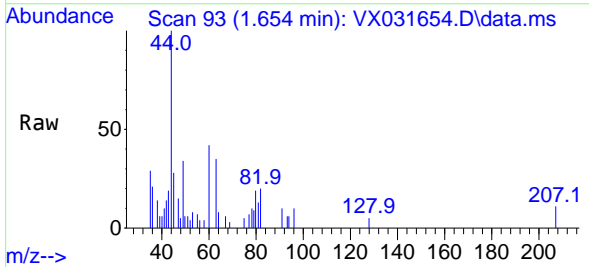
Instrument : MSVOA\_X  
 ClientSampleId : D22021-6DL

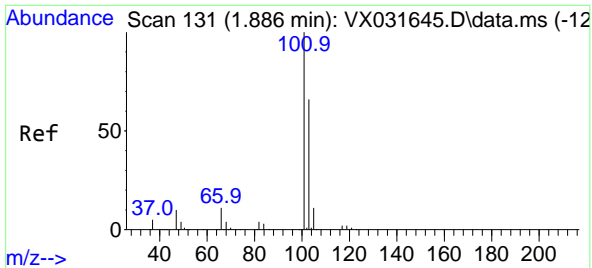
Tgt Ion: 94 Resp: 938  
 Ion Ratio Lower Upper  
 94 100  
 96 91.1 74.4 111.6



#6  
 Chloroethane  
 Concen: Below Cal  
 RT: 1.654 min Scan# 93  
 Delta R.T. -0.031 min  
 Lab File: VX031654.D  
 Acq: 26 Sep 2022 17:26

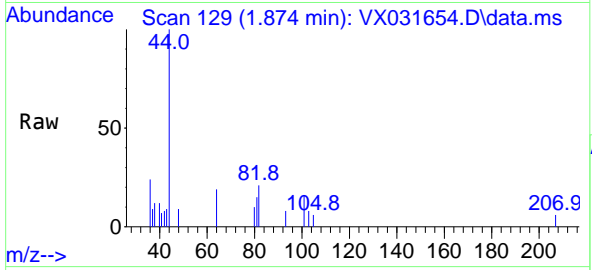
Tgt Ion: 64 Resp: 18  
 Ion Ratio Lower Upper  
 64 100  
 66 0.0 25.0 37.4#



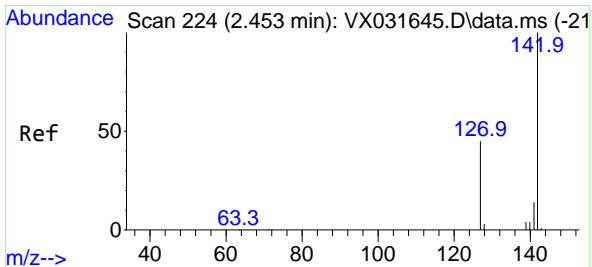
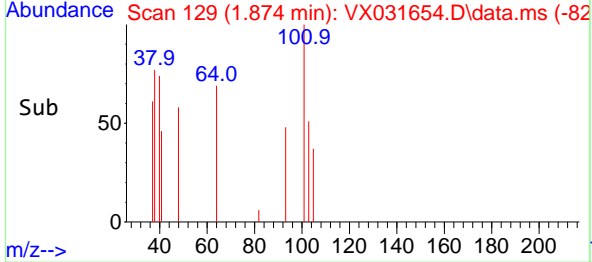
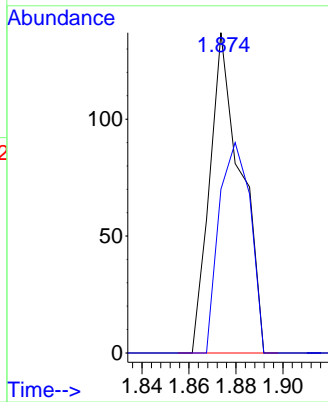


#7  
 Trichlorofluoromethane  
 Concen: Below Cal  
 RT: 1.874 min Scan# 11  
 Delta R.T. -0.012 min  
 Lab File: VX031654.D  
 Acq: 26 Sep 2022 17:26

Instrument : MSVOA\_X  
 ClientSampleId : D22021-6DL

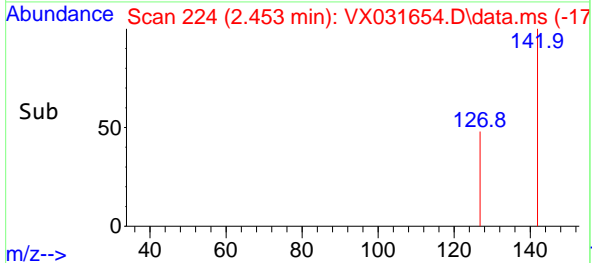
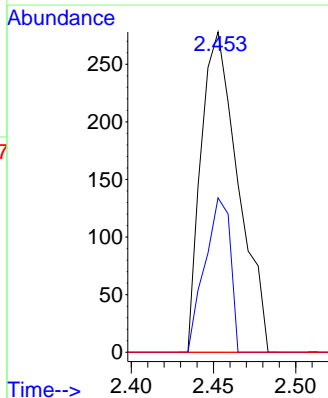
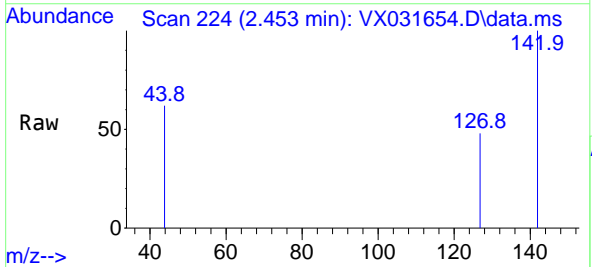


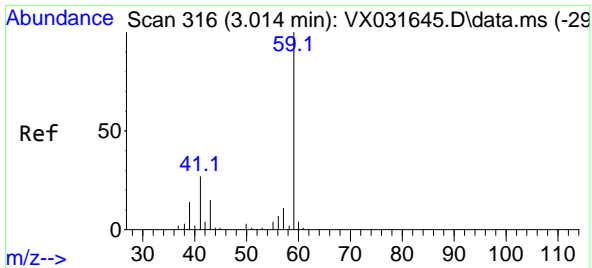
Tgt Ion:101 Resp: 127  
 Ion Ratio Lower Upper  
 101 100  
 103 51.1 51.8 77.6#



#10  
 Methyl Iodide  
 Concen: 0.858 ug/l  
 RT: 2.453 min Scan# 224  
 Delta R.T. -0.000 min  
 Lab File: VX031654.D  
 Acq: 26 Sep 2022 17:26

Tgt Ion:142 Resp: 437  
 Ion Ratio Lower Upper  
 142 100  
 127 33.0 37.4 56.0#  
 141 0.0 11.6 17.4#

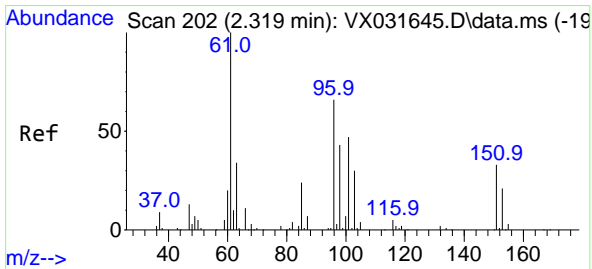
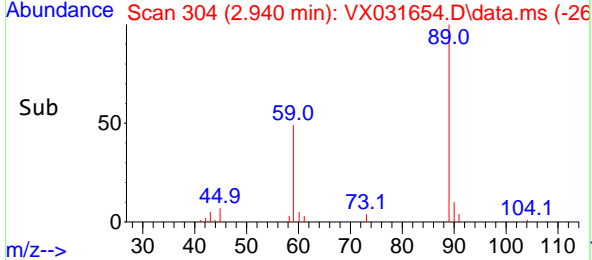
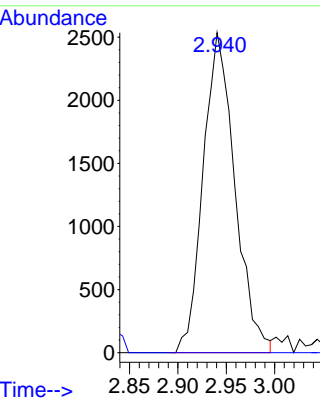
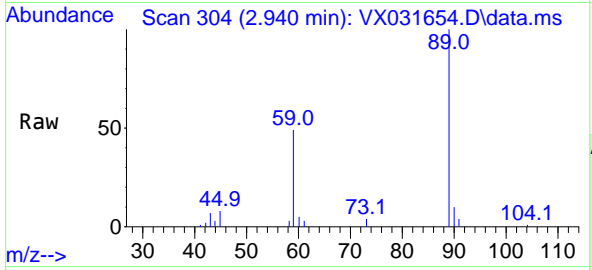




#11  
 Tert butyl alcohol  
 Concen: 28.632 ug/l  
 RT: 2.940 min Scan# 30  
 Delta R.T. -0.049 min  
 Lab File: VX031654.D  
 Acq: 26 Sep 2022 17:26

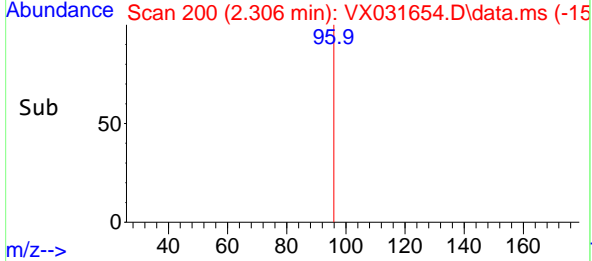
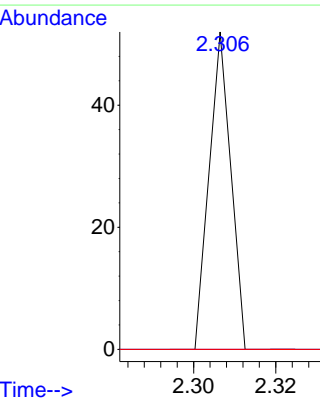
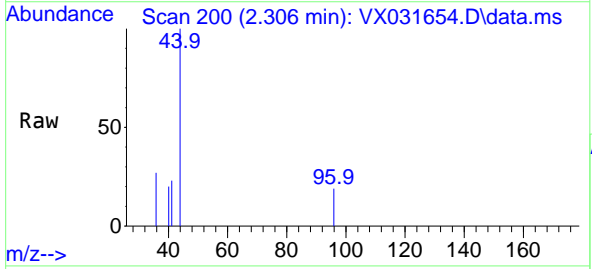
Instrument : MSVOA\_X  
 ClientSampleId : D22021-6DL

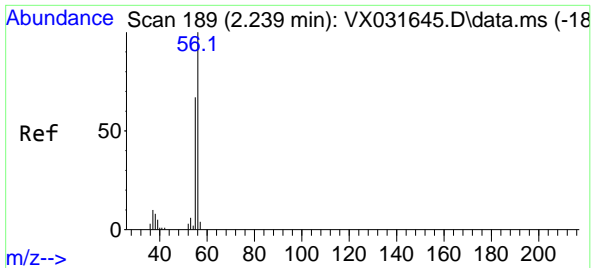
Tgt Ion: 59 Resp: 5785  
 Ion Ratio Lower Upper  
 59 100  
 57 0.0 8.2 12.2#



#12  
 1,1-Dichloroethene  
 Concen: Below Cal  
 RT: 2.306 min Scan# 200  
 Delta R.T. -0.013 min  
 Lab File: VX031654.D  
 Acq: 26 Sep 2022 17:26

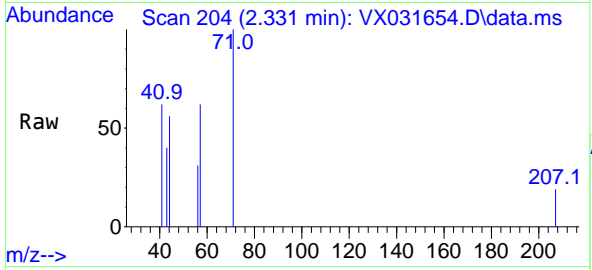
Tgt Ion: 96 Resp: 19  
 Ion Ratio Lower Upper  
 96 100  
 61 0.0 135.3 202.9#  
 98 0.0 49.4 74.2#



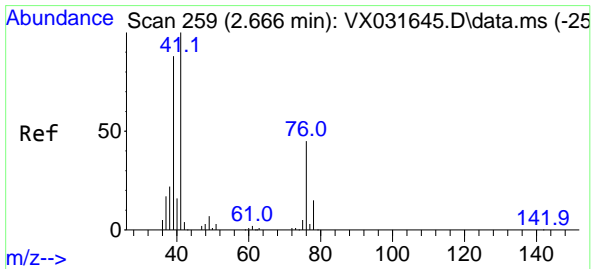
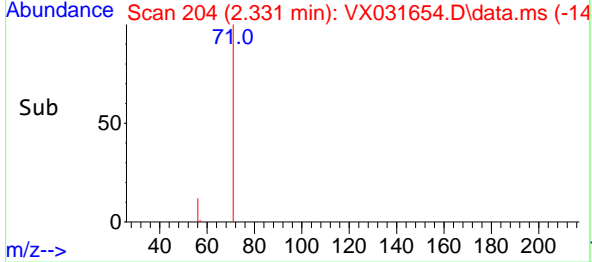
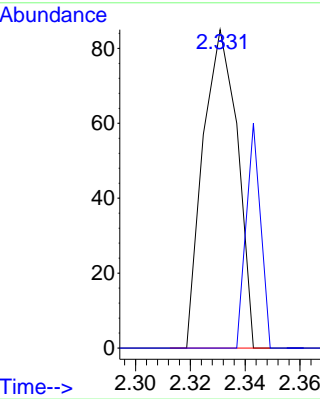


#13  
 Acrolein  
 Concen: Below Cal  
 RT: 2.331 min Scan# 204  
 Delta R.T. 0.092 min  
 Lab File: VX031654.D  
 Acq: 26 Sep 2022 17:26

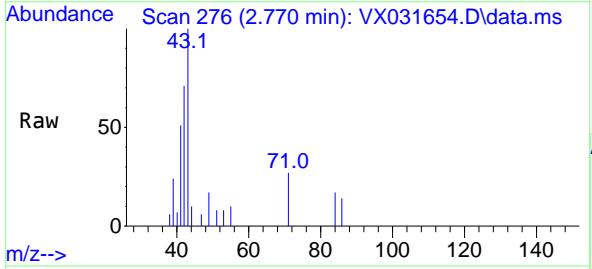
Instrument : MSVOA\_X  
 ClientSampleId : D22021-6DL



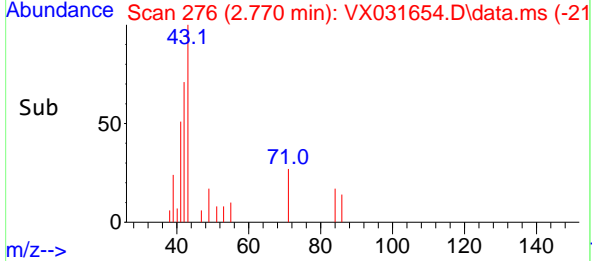
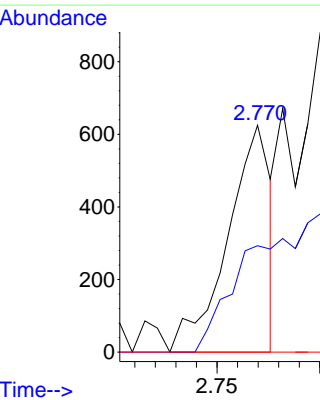
Tgt Ion: 56 Resp: 74  
 Ion Ratio Lower Upper  
 56 100  
 55 29.7 56.0 84.0#



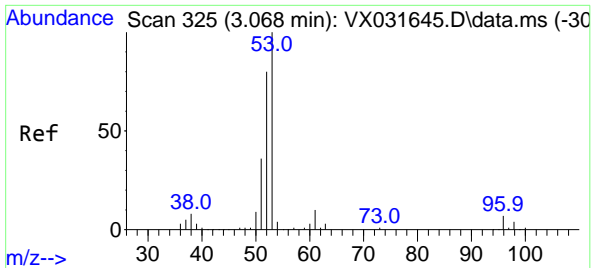
#14  
 Allyl chloride  
 Concen: 1.340 ug/l  
 RT: 2.770 min Scan# 276  
 Delta R.T. 0.104 min  
 Lab File: VX031654.D  
 Acq: 26 Sep 2022 17:26



Tgt Ion: 41 Resp: 916  
 Ion Ratio Lower Upper  
 41 100  
 39 0.0 58.2 87.4#  
 76 0.0 26.9 40.3#

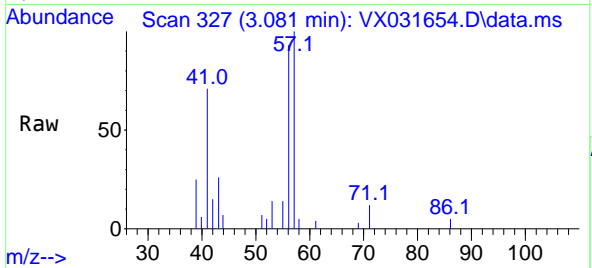




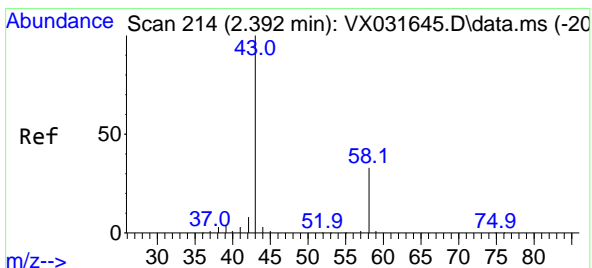
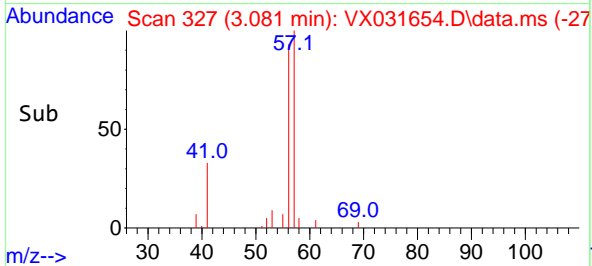
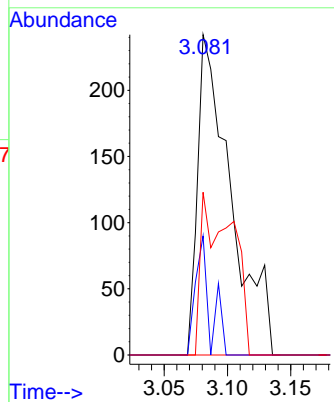


#15  
 Acrylonitrile  
 Concen: 1.539 ug/l  
 RT: 3.081 min Scan# 31  
 Delta R.T. 0.012 min  
 Lab File: VX031654.D  
 Acq: 26 Sep 2022 17:26

Instrument :  
 MSVOA\_X  
 ClientSampleId :  
 D22021-6DL

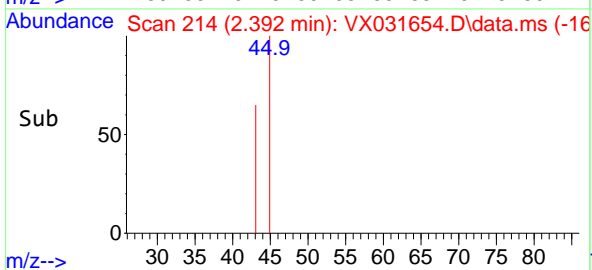
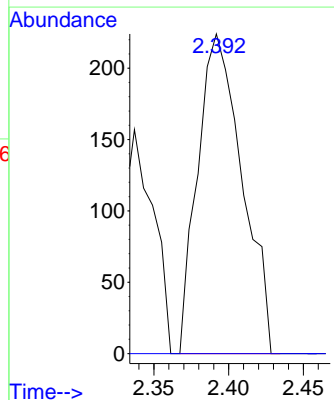
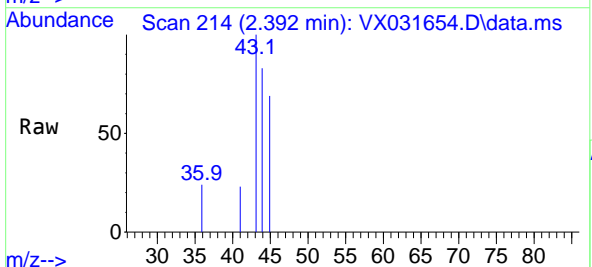


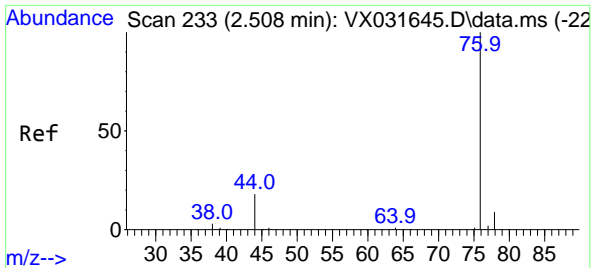
Tgt Ion: 53 Resp: 443  
 Ion Ratio Lower Upper  
 53 100  
 52 16.5 66.9 100.3#  
 51 24.6 30.0 45.0#



#16  
 Acetone  
 Concen: Below Cal  
 RT: 2.392 min Scan# 214  
 Delta R.T. 0.006 min  
 Lab File: VX031654.D  
 Acq: 26 Sep 2022 17:26

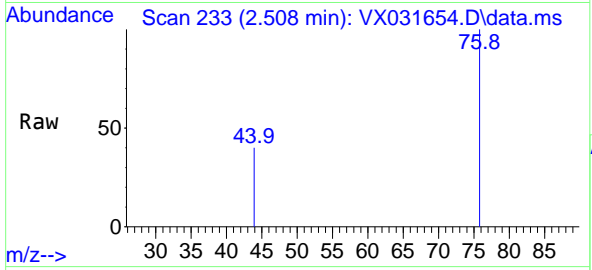
Tgt Ion: 43 Resp: 463  
 Ion Ratio Lower Upper  
 43 100  
 58 0.0 23.8 35.8#



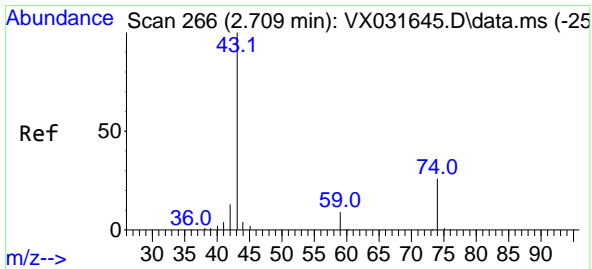
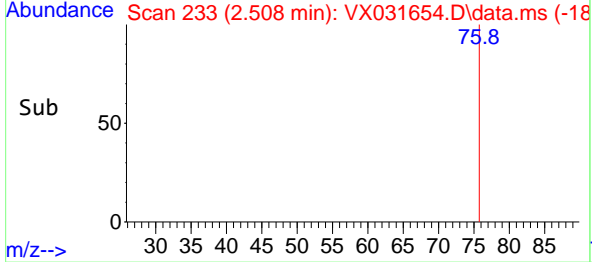
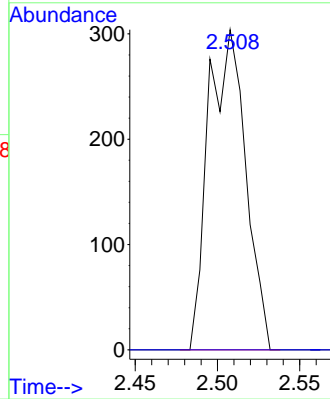


#17  
 Carbon Disulfide  
 Concen: Below Cal  
 RT: 2.508 min Scan# 211  
 Delta R.T. -0.006 min  
 Lab File: VX031654.D  
 Acq: 26 Sep 2022 17:26

Instrument : MSVOA\_X  
 ClientSampleId : D22021-6DL

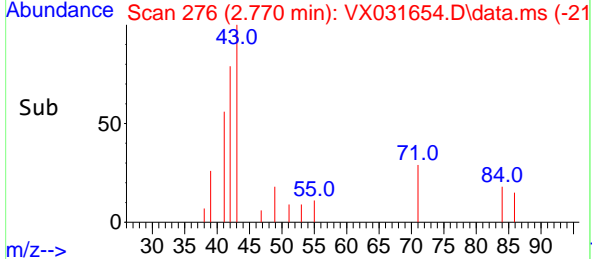
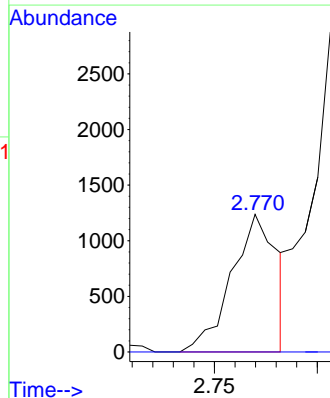
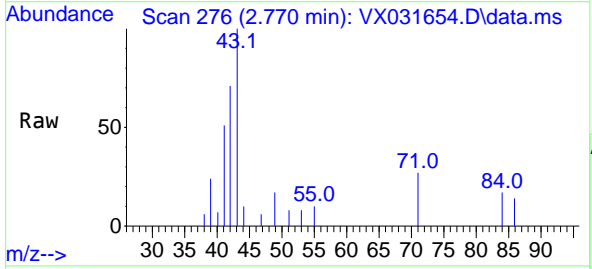


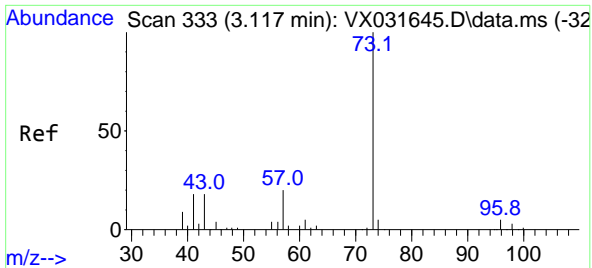
Tgt Ion: 76 Resp: 480  
 Ion Ratio Lower Upper  
 76 100  
 78 0.0 7.2 10.8#



#18  
 Methyl Acetate  
 Concen: 2.557 ug/l  
 RT: 2.770 min Scan# 276  
 Delta R.T. 0.061 min  
 Lab File: VX031654.D  
 Acq: 26 Sep 2022 17:26

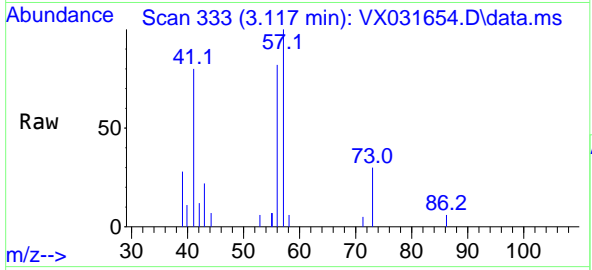
Tgt Ion: 43 Resp: 1906  
 Ion Ratio Lower Upper  
 43 100  
 74 0.0 18.6 27.8#



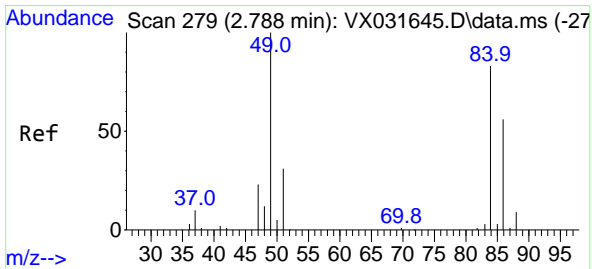
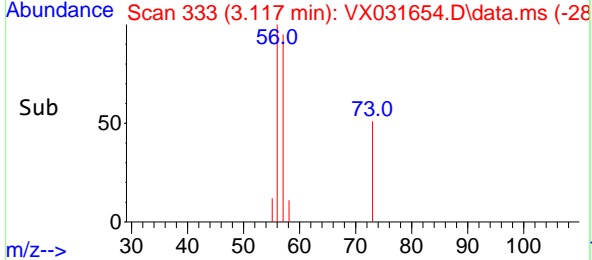
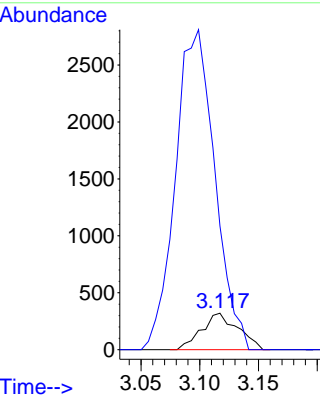


#19  
 Methyl tert-butyl Ether  
 Concen: 0.376 ug/l  
 RT: 3.117 min Scan# 31  
 Delta R.T. 0.000 min  
 Lab File: VX031654.D  
 Acq: 26 Sep 2022 17:26

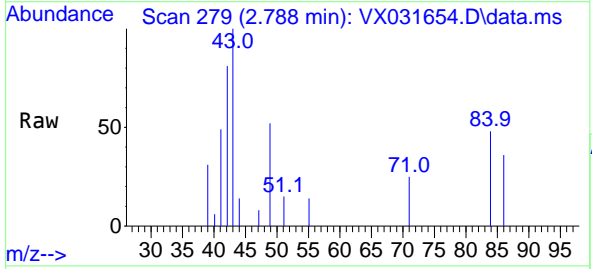
Instrument : MSVOA\_X  
 ClientSampleId : D22021-6DL



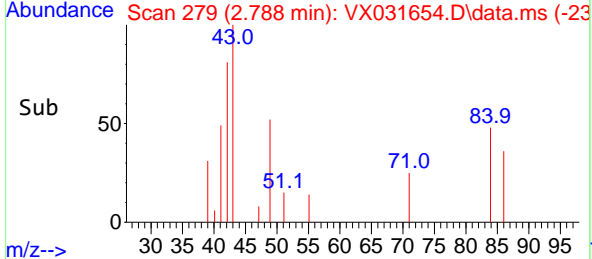
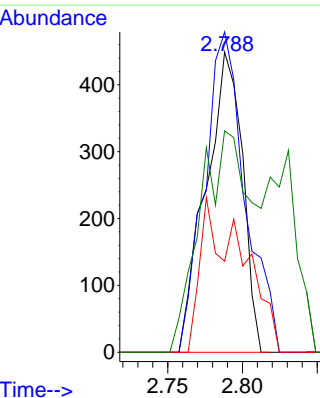
Tgt Ion: 73 Resp: 693  
 Ion Ratio Lower Upper  
 73 100  
 57 338.3 17.2 25.8#

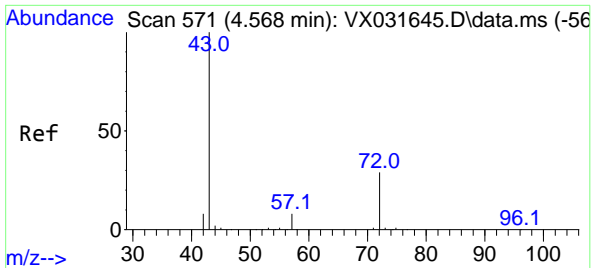


#20  
 Methylene Chloride  
 Concen: Below Cal  
 RT: 2.788 min Scan# 279  
 Delta R.T. 0.000 min  
 Lab File: VX031654.D  
 Acq: 26 Sep 2022 17:26



Tgt Ion: 84 Resp: 763  
 Ion Ratio Lower Upper  
 84 100  
 49 106.7 105.9 158.9  
 51 30.3 32.2 48.2#  
 86 73.7 50.8 76.2

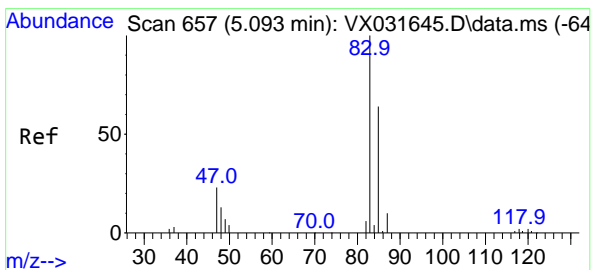
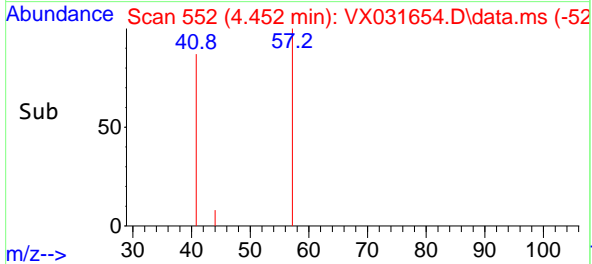
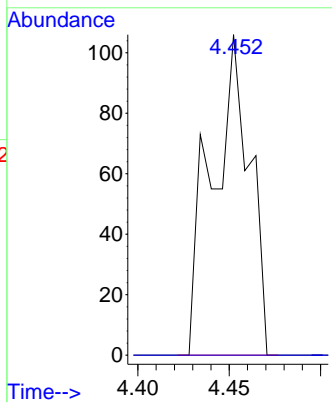
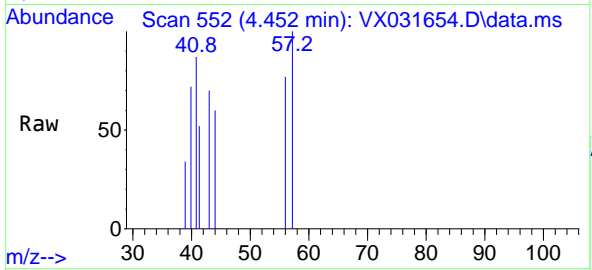




#25  
 2-Butanone  
 Concen: 0.384 ug/l  
 RT: 4.452 min Scan# 511  
 Delta R.T. -0.110 min  
 Lab File: VX031654.D  
 Acq: 26 Sep 2022 17:26

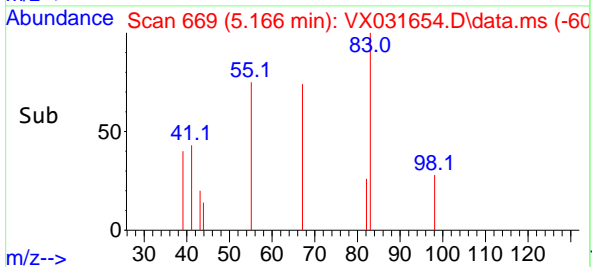
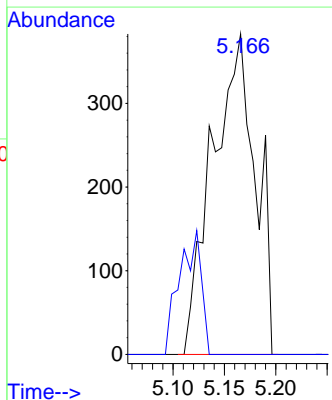
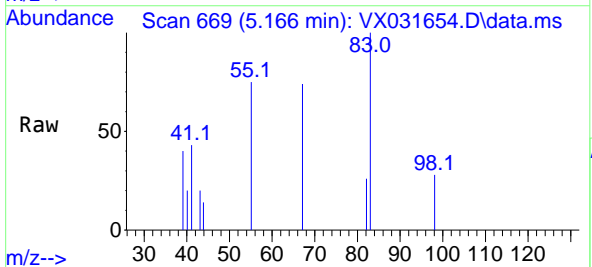
Instrument : MSVOA\_X  
 ClientSampleId : D22021-6DL

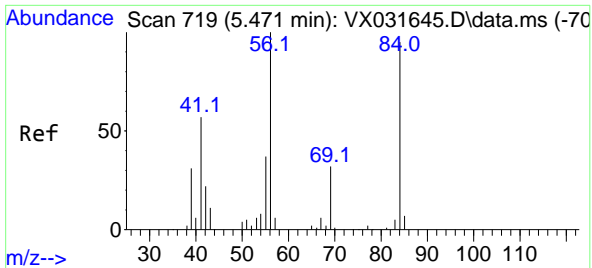
Tgt Ion: 43 Resp: 152  
 Ion Ratio Lower Upper  
 43 100  
 72 0.0 21.1 31.7#



#30  
 Chloroform  
 Concen: 0.891 ug/l  
 RT: 5.166 min Scan# 669  
 Delta R.T. 0.067 min  
 Lab File: VX031654.D  
 Acq: 26 Sep 2022 17:26

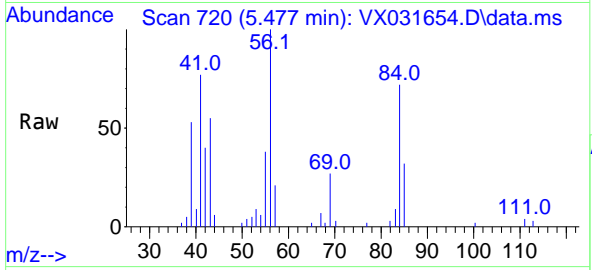
Tgt Ion: 83 Resp: 1111  
 Ion Ratio Lower Upper  
 83 100  
 85 0.0 52.8 79.2#



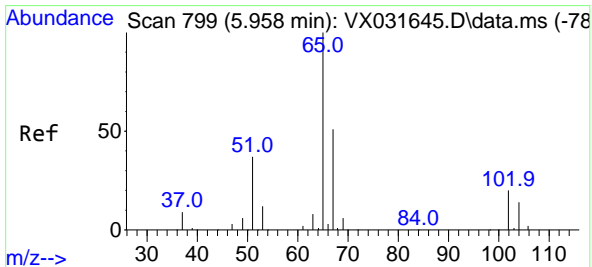
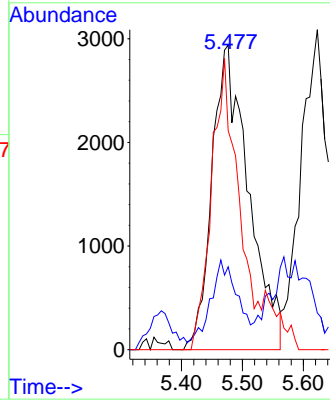
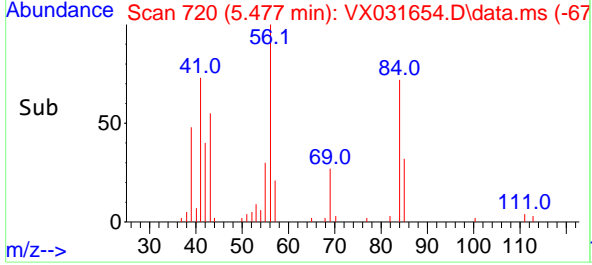


#31  
 Cyclohexane  
 Concen: 15.553 ug/l  
 RT: 5.477 min Scan# 719  
 Delta R.T. 0.006 min  
 Lab File: VX031654.D  
 Acq: 26 Sep 2022 17:26

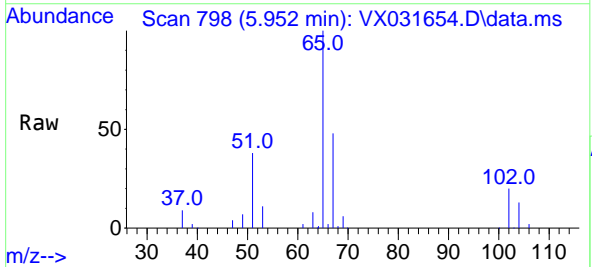
Instrument : MSVOA\_X  
 ClientSampleId : D22021-6DL



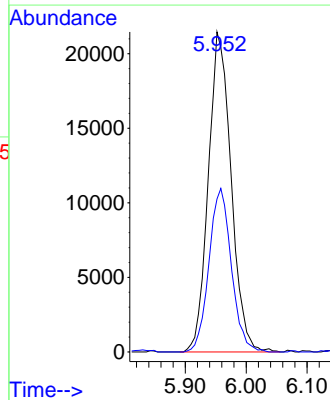
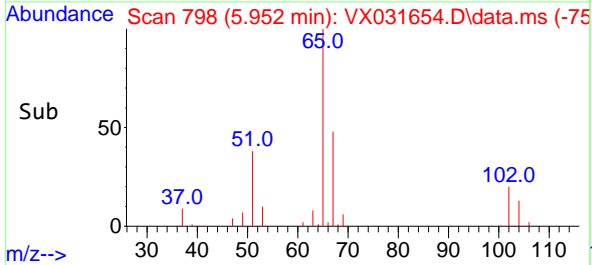
Tgt Ion: 56 Resp: 12265  
 Ion Ratio Lower Upper  
 56 100  
 69 24.1 25.1 37.7#  
 84 71.8 70.2 105.4

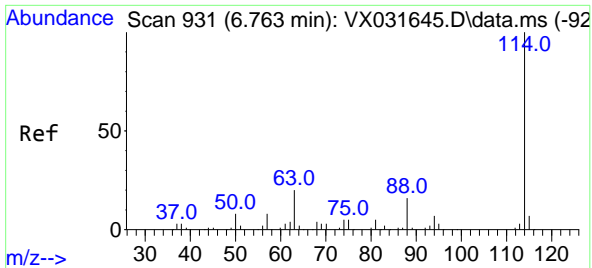


#33  
 1,2-Dichloroethane-d4  
 Concen: 67.316 ug/l  
 RT: 5.952 min Scan# 798  
 Delta R.T. -0.006 min  
 Lab File: VX031654.D  
 Acq: 26 Sep 2022 17:26



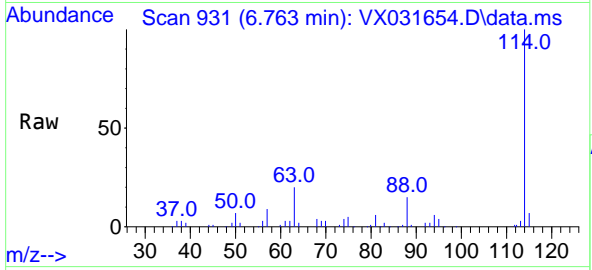
Tgt Ion: 65 Resp: 55830  
 Ion Ratio Lower Upper  
 65 100  
 67 50.2 0.0 102.4





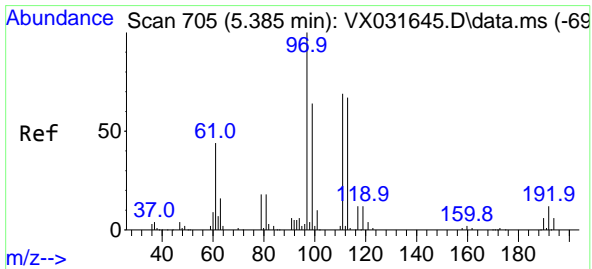
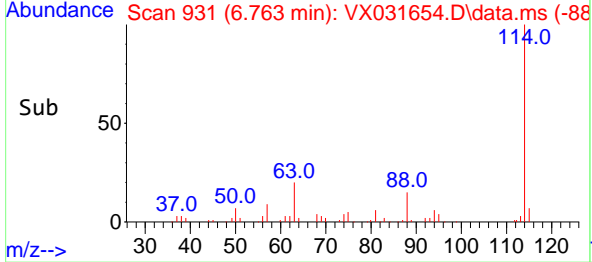
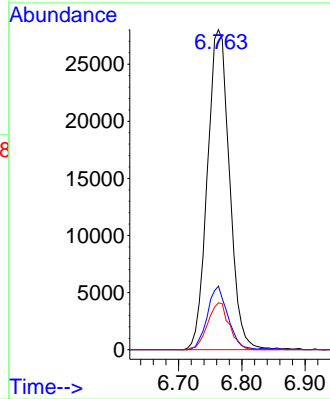
#34  
 1,4-Difluorobenzene  
 Concen: 50.000 ug/l  
 RT: 6.763 min Scan# 911  
 Delta R.T. -0.000 min  
 Lab File: VX031654.D  
 Acq: 26 Sep 2022 17:26

Instrument : MSVOA\_X  
 ClientSampleId : D22021-6DL

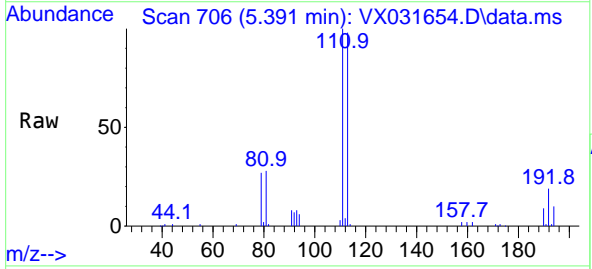


Tgt Ion:114 Resp: 67960

Ion	Ratio	Lower	Upper
114	100		
63	19.8	0.0	42.6
88	14.6	0.0	33.0

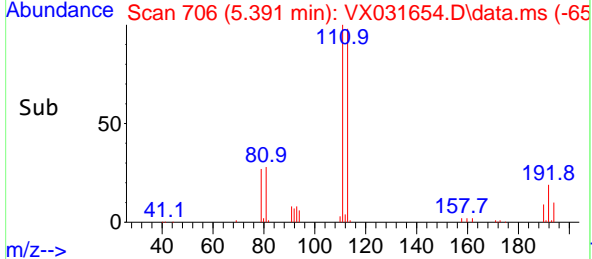
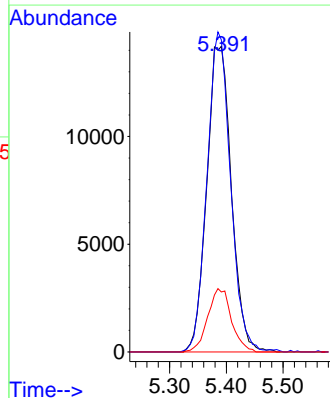


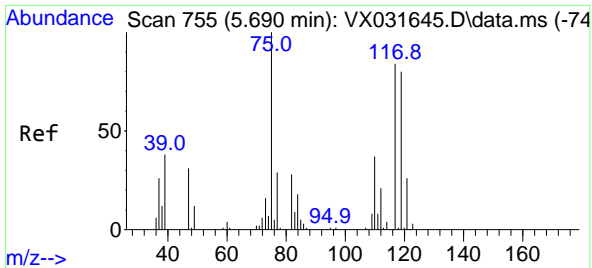
#35  
 Dibromofluoromethane  
 Concen: 52.908 ug/l  
 RT: 5.391 min Scan# 706  
 Delta R.T. 0.000 min  
 Lab File: VX031654.D  
 Acq: 26 Sep 2022 17:26



Tgt Ion:113 Resp: 42843

Ion	Ratio	Lower	Upper
113	100		
111	99.9	82.4	123.6
192	19.9	14.1	21.1



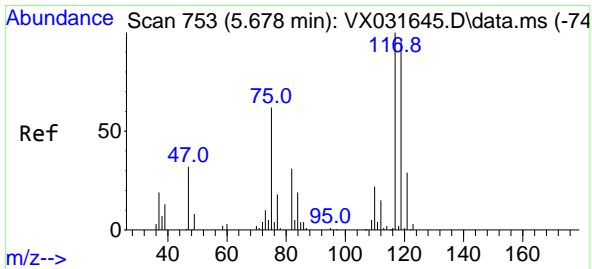
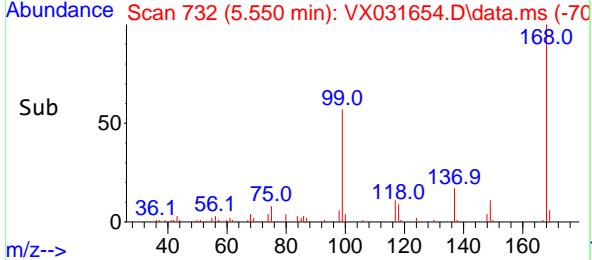
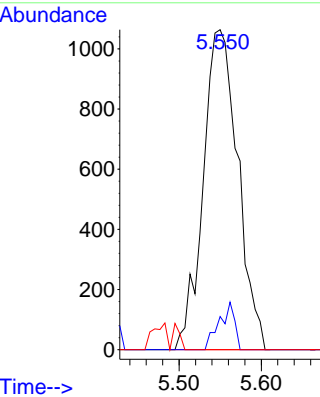
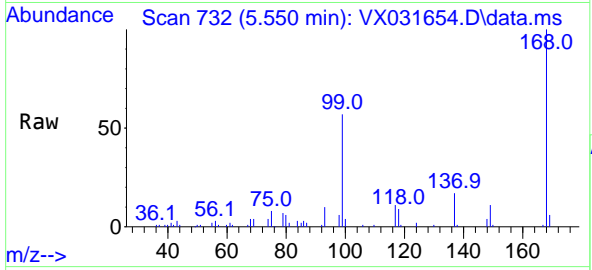


#36  
 1,1-Dichloropropene  
 Concen: 3.357 ug/l  
 RT: 5.550 min Scan# 711  
 Delta R.T. -0.140 min  
 Lab File: VX031654.D  
 Acq: 26 Sep 2022 17:26

Instrument : MSVOA\_X  
 ClientSampleId : D22021-6DL

Tgt Ion: 75 Resp: 3122

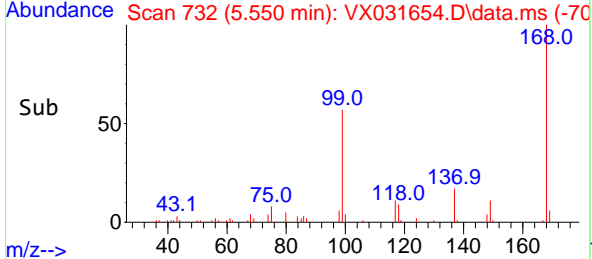
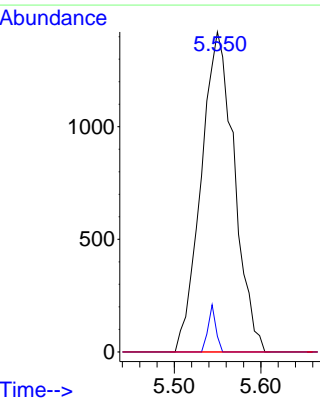
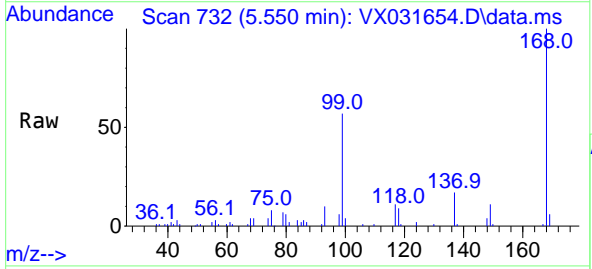
Ion	Ratio	Lower	Upper
75	100		
110	6.6	17.5	52.5#
77	0.0	24.9	37.3#

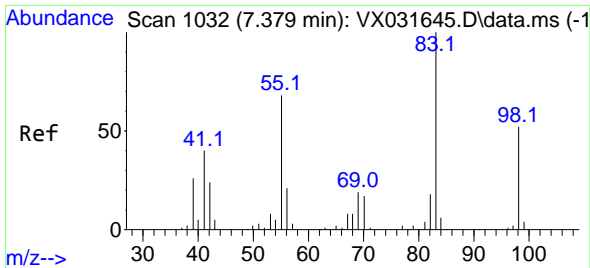


#38  
 Carbon Tetrachloride  
 Concen: 3.607 ug/l  
 RT: 5.550 min Scan# 732  
 Delta R.T. -0.128 min  
 Lab File: VX031654.D  
 Acq: 26 Sep 2022 17:26

Tgt Ion: 117 Resp: 3780

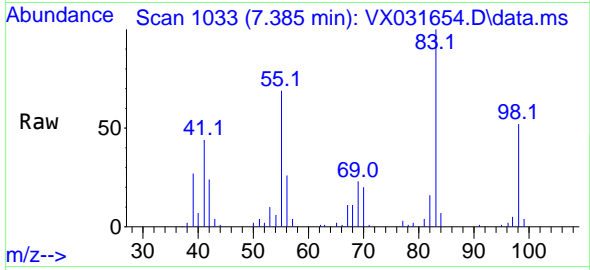
Ion	Ratio	Lower	Upper
117	100		
119	4.9	74.6	112.0#
121	0.0	25.3	37.9#



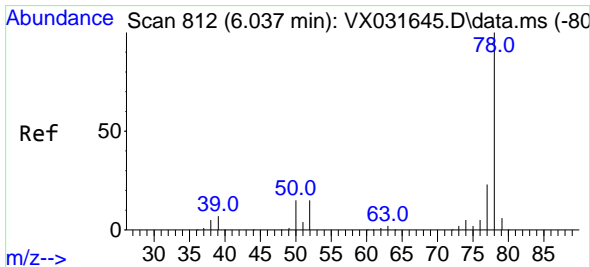
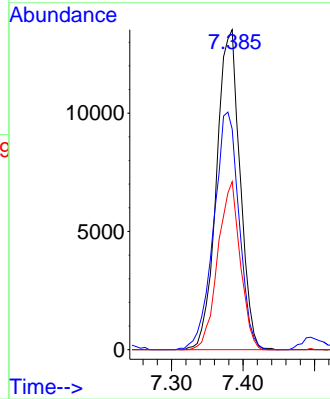
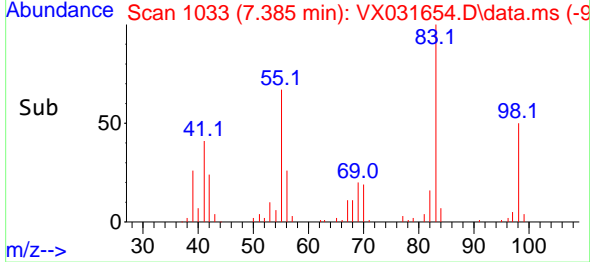


#39  
 Methylcyclohexane  
 Concen: 29.072 ug/l  
 RT: 7.385 min Scan# 1033  
 Delta R.T. -0.000 min  
 Lab File: VX031654.D  
 Acq: 26 Sep 2022 17:26

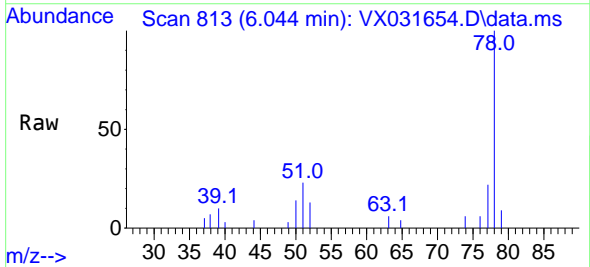
Instrument : MSVOA\_X  
 ClientSampleId : D22021-6DL



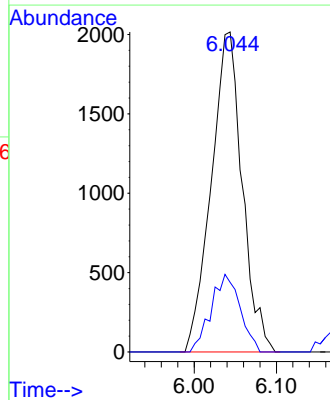
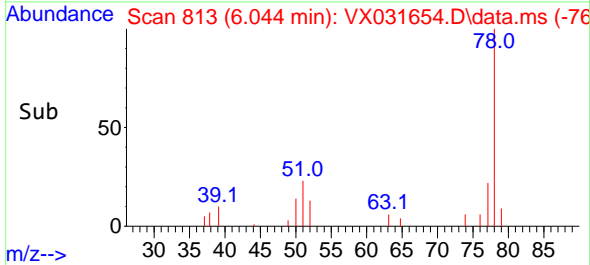
Tgt Ion: 83 Resp: 30803  
 Ion Ratio Lower Upper  
 83 100  
 55 68.9 61.0 91.4  
 98 52.5 37.7 56.5



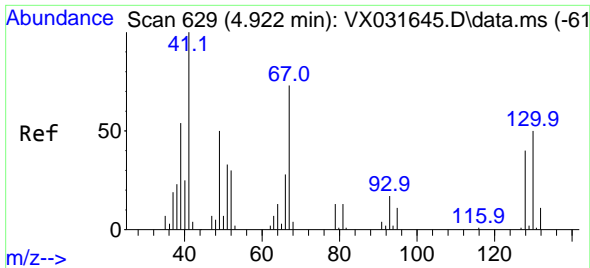
#40  
 Benzene  
 Concen: 1.848 ug/l  
 RT: 6.044 min Scan# 813  
 Delta R.T. -0.000 min  
 Lab File: VX031654.D  
 Acq: 26 Sep 2022 17:26



Tgt Ion: 78 Resp: 5278  
 Ion Ratio Lower Upper  
 78 100  
 77 21.8 18.7 28.1

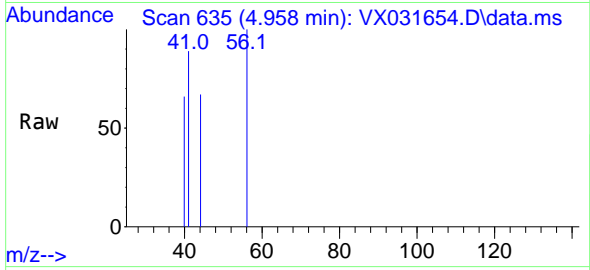






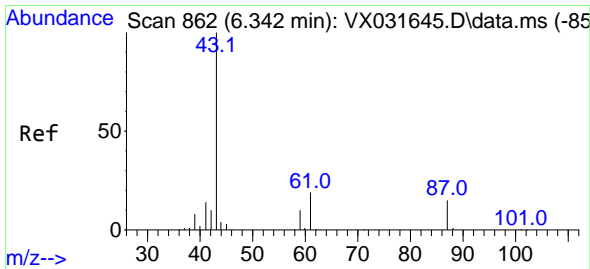
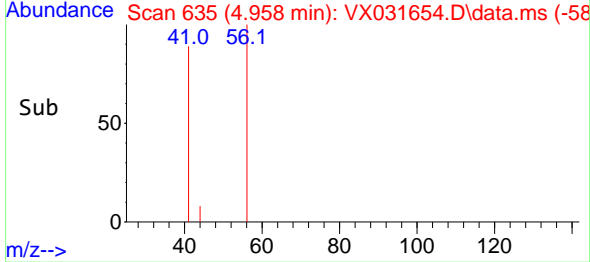
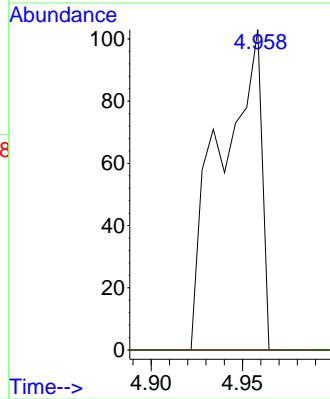
#41  
 Methacrylonitrile  
 Concen: 0.337 ug/l  
 RT: 4.958 min Scan# 61  
 Delta R.T. 0.030 min  
 Lab File: VX031654.D  
 Acq: 26 Sep 2022 17:26

Instrument :  
 MSVOA\_X  
 ClientSampleId :  
 D22021-6DL

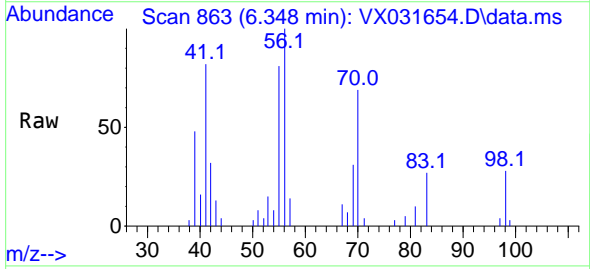


Tgt Ion: 41 Resp: 161

Ion	Ratio	Lower	Upper
41	100		
39	0.0	45.0	67.6#
67	0.0	58.2	87.4#
52	0.0	25.0	37.6#

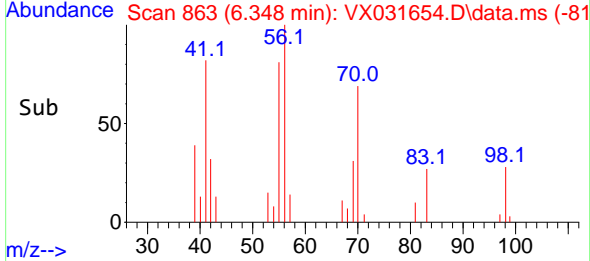
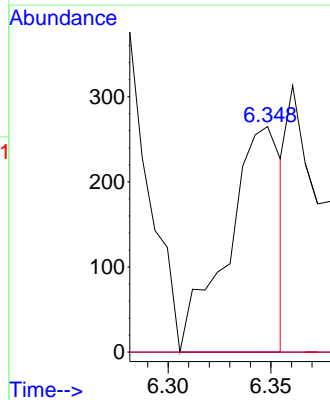


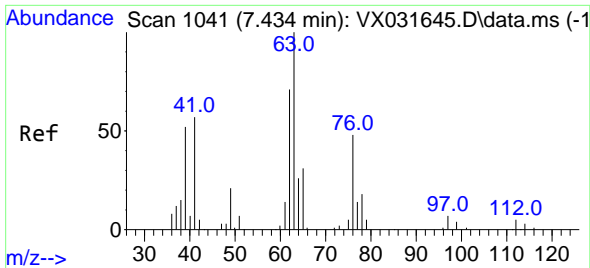
#43  
 Isopropyl Acetate  
 Concen: 0.324 ug/l  
 RT: 6.348 min Scan# 863  
 Delta R.T. 0.006 min  
 Lab File: VX031654.D  
 Acq: 26 Sep 2022 17:26



Tgt Ion: 43 Resp: 479

Ion	Ratio	Lower	Upper
43	100		
61	0.0	15.3	22.9#
87	0.0	10.6	15.8#

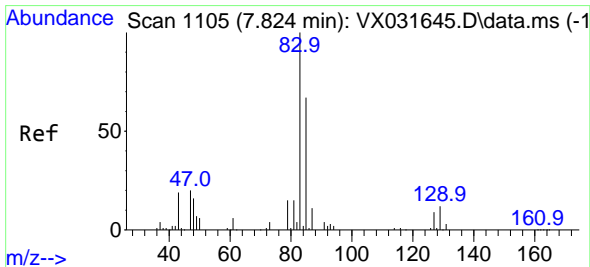
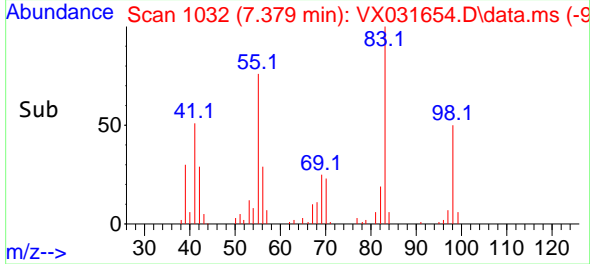
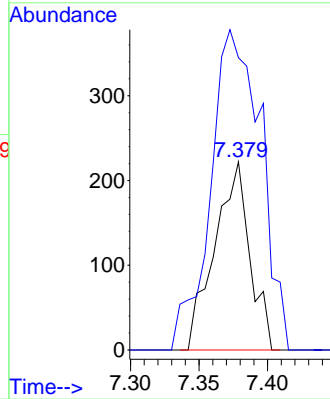
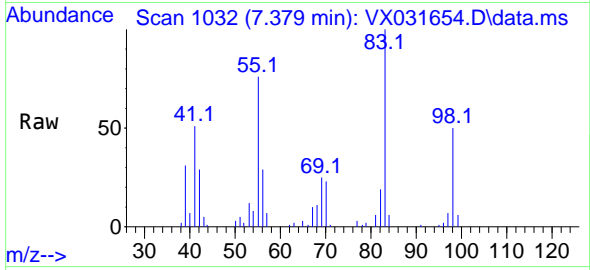




#45  
 1,2-Dichloropropane  
 Concen: 0.571 ug/l  
 RT: 7.379 min Scan# 1096  
 Delta R.T. -0.055 min  
 Lab File: VX031654.D  
 Acq: 26 Sep 2022 17:26

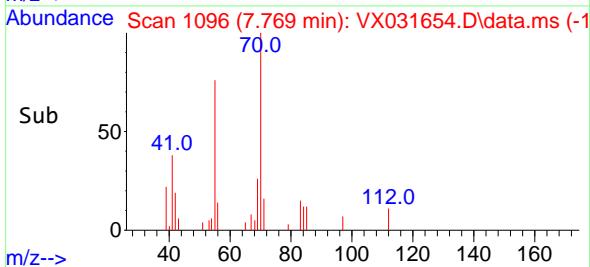
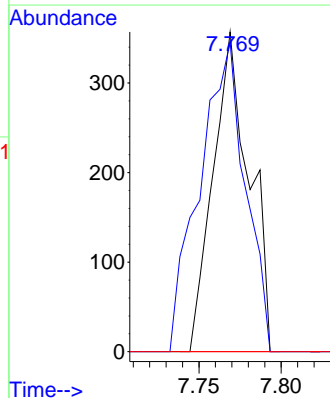
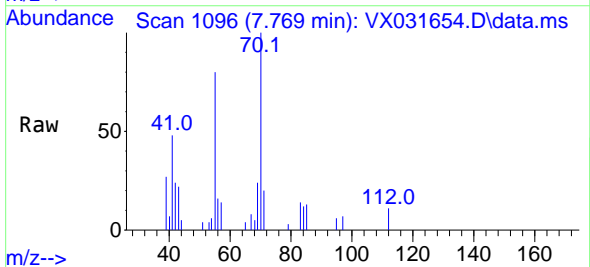
Instrument : MSVOA\_X  
 ClientSampleId : D22021-6DL

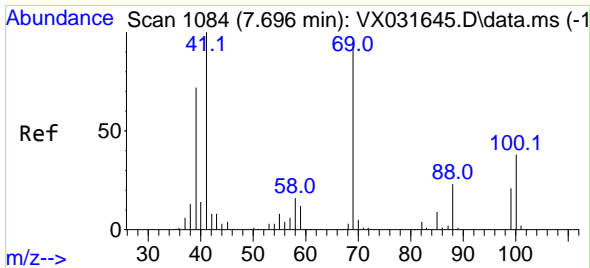
Tgt Ion: 63 Resp: 396  
 Ion Ratio Lower Upper  
 63 100  
 65 131.1 26.6 39.8#



#47  
 Bromodichloromethane  
 Concen: 0.543 ug/l  
 RT: 7.769 min Scan# 1096  
 Delta R.T. -0.055 min  
 Lab File: VX031654.D  
 Acq: 26 Sep 2022 17:26

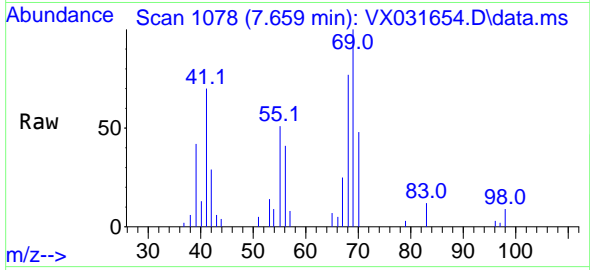
Tgt Ion: 83 Resp: 545  
 Ion Ratio Lower Upper  
 83 100  
 85 96.9 51.0 76.6#  
 127 0.0 7.0 10.6#



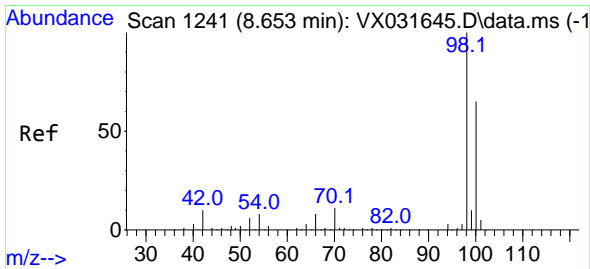
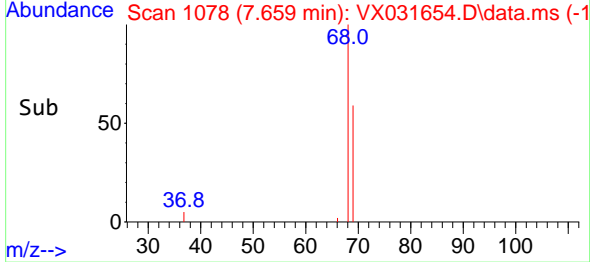
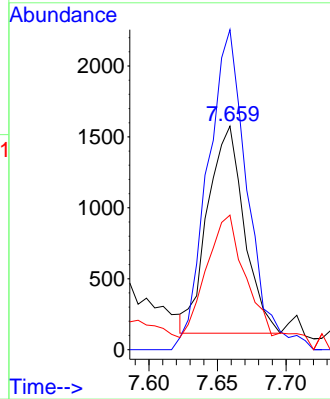


#48  
 Methyl methacrylate  
 Concen: 4.175 ug/l  
 RT: 7.659 min Scan# 1084  
 Delta R.T. -0.037 min  
 Lab File: VX031654.D  
 Acq: 26 Sep 2022 17:26

Instrument : MSVOA\_X  
 ClientSampleId : D22021-6DL

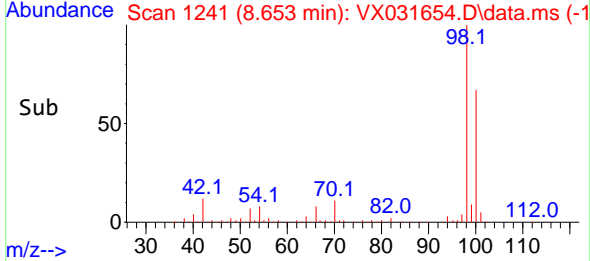
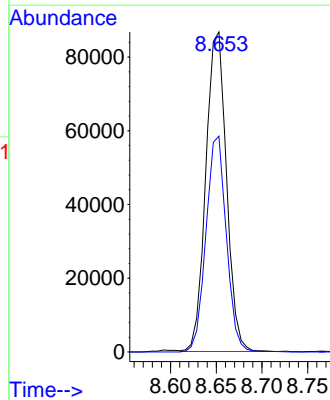
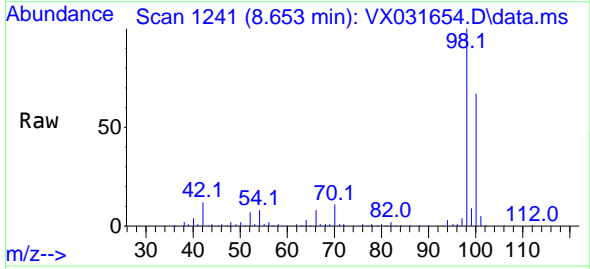


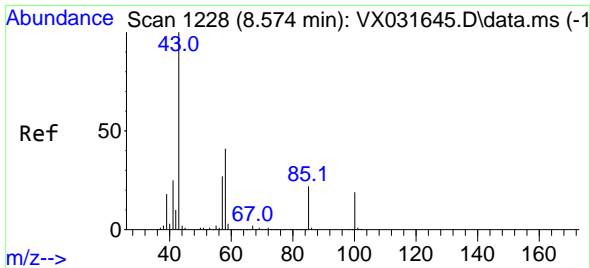
Tgt Ion: 41 Resp: 2711  
 Ion Ratio Lower Upper  
 41 100  
 69 168.5 64.6 96.8#  
 39 79.9 51.4 77.0#



#50  
 Toluene-d8  
 Concen: 46.457 ug/l  
 RT: 8.653 min Scan# 1241  
 Delta R.T. -0.000 min  
 Lab File: VX031654.D  
 Acq: 26 Sep 2022 17:26

Tgt Ion: 98 Resp: 136385  
 Ion Ratio Lower Upper  
 98 100  
 100 66.6 52.5 78.7

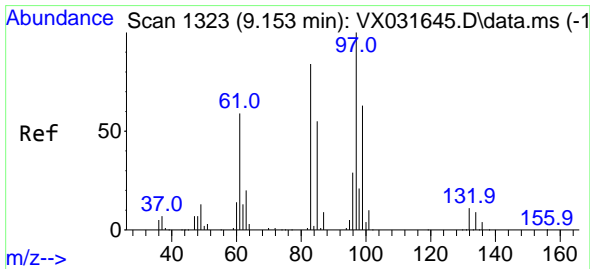
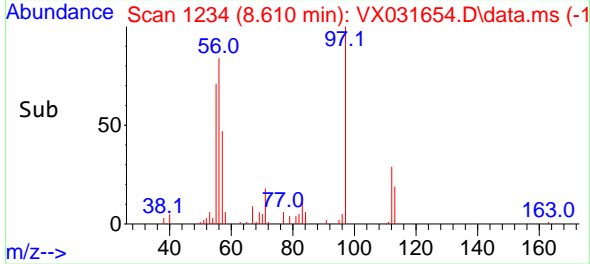
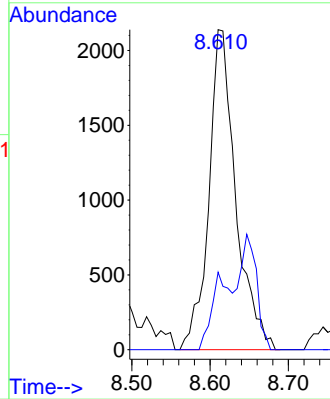
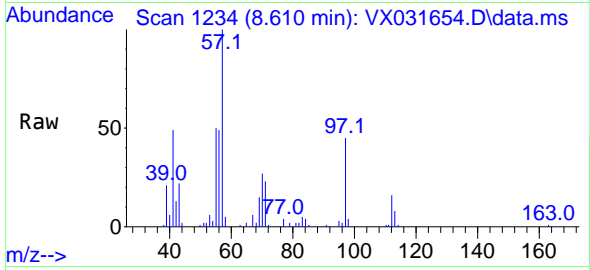




#51  
 4-Methyl-2-Pentanone  
 Concen: 5.476 ug/l  
 RT: 8.610 min Scan# 1115  
 Delta R.T. 0.030 min  
 Lab File: VX031654.D  
 Acq: 26 Sep 2022 17:26

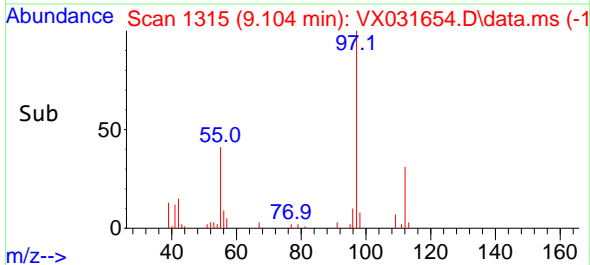
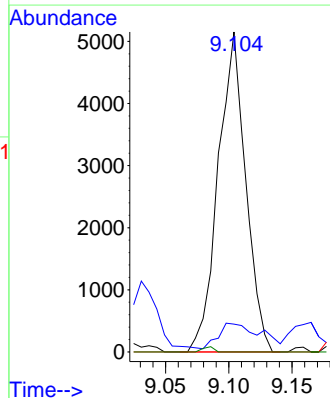
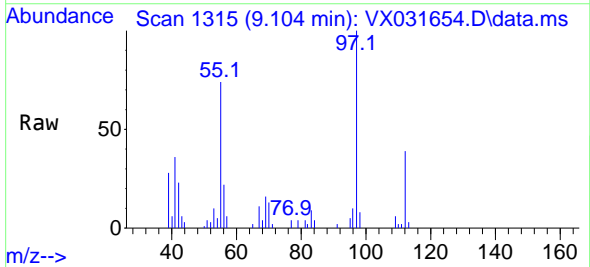
Instrument : MSVOA\_X  
 ClientSampleId : D22021-6DL

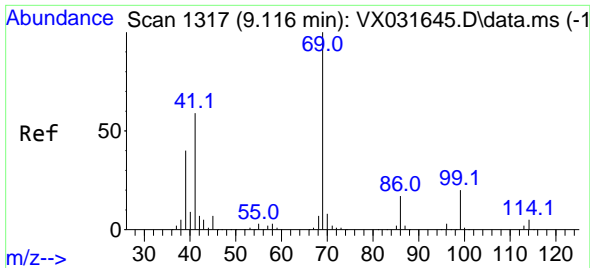
Tgt Ion: 43 Resp: 5117  
 Ion Ratio Lower Upper  
 43 100  
 58 16.6 30.6 46.0#



#55  
 1,1,2-Trichloroethane  
 Concen: 9.516 ug/l  
 RT: 9.104 min Scan# 1315  
 Delta R.T. -0.049 min  
 Lab File: VX031654.D  
 Acq: 26 Sep 2022 17:26

Tgt Ion: 97 Resp: 7800  
 Ion Ratio Lower Upper  
 97 100  
 83 6.9 69.0 103.6#  
 85 0.0 44.1 66.1#  
 99 0.0 51.3 76.9#

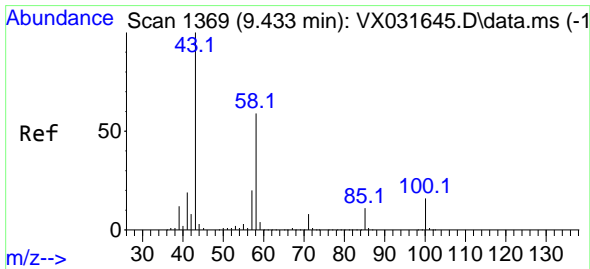
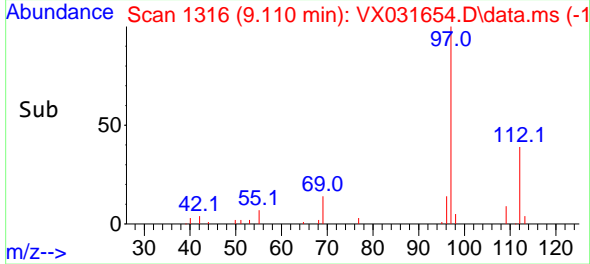
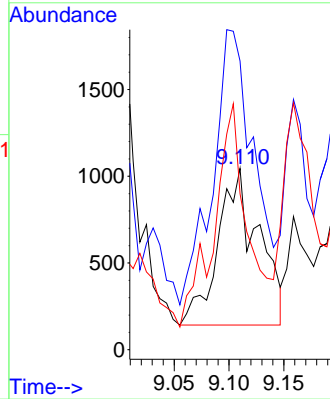
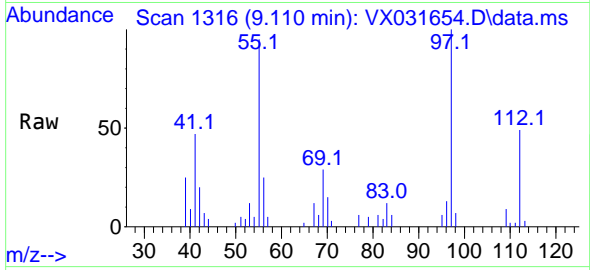




#56  
 Ethyl methacrylate  
 Concen: 2.217 ug/l  
 RT: 9.110 min Scan# 111  
 Delta R.T. -0.006 min  
 Lab File: VX031654.D  
 Acq: 26 Sep 2022 17:26

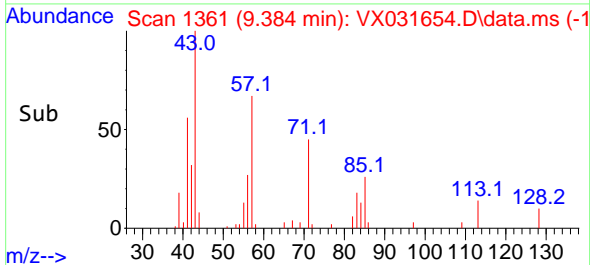
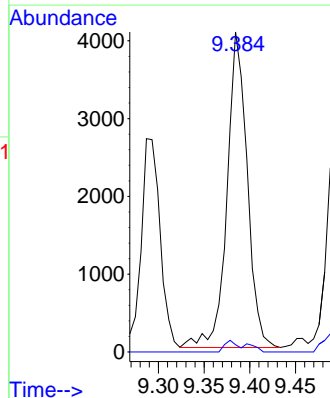
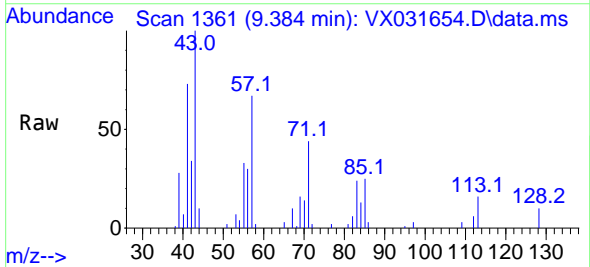
Instrument : MSVOA\_X  
 ClientSampleId : D22021-6DL

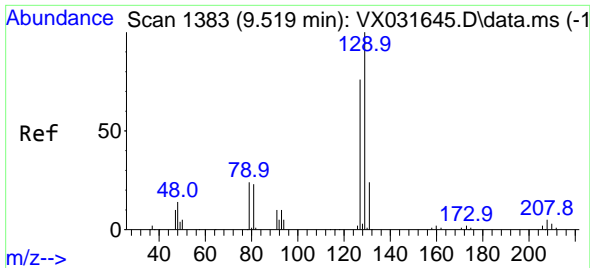
Tgt Ion: 69 Resp: 2325  
 Ion Ratio Lower Upper  
 69 100  
 41 175.0 54.2 81.4#  
 39 117.9 34.2 51.2#



#59  
 2-Hexanone  
 Concen: 8.957 ug/l  
 RT: 9.384 min Scan# 1361  
 Delta R.T. -0.049 min  
 Lab File: VX031654.D  
 Acq: 26 Sep 2022 17:26

Tgt Ion: 43 Resp: 6245  
 Ion Ratio Lower Upper  
 43 100  
 58 2.3 26.7 80.0#

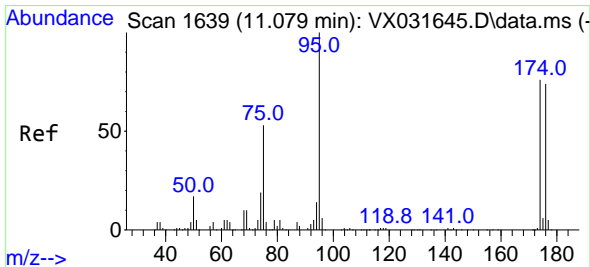
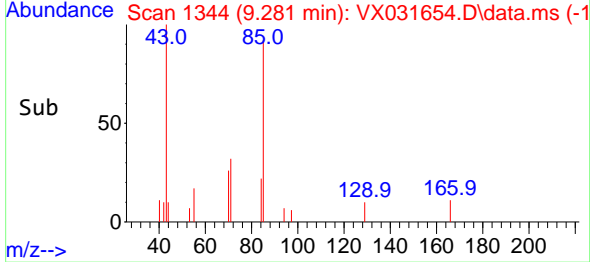
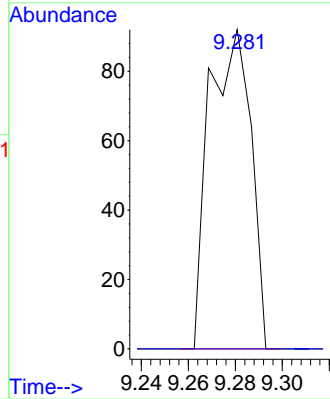
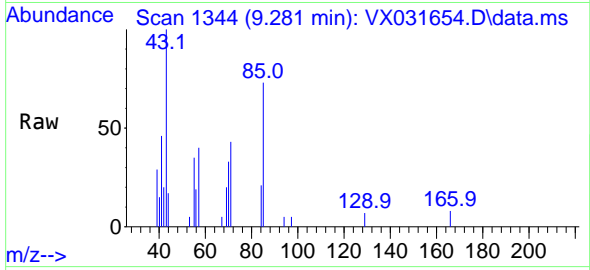




#60  
 Dibromochloromethane  
 Concen: 1.655 ug/l  
 RT: 9.281 min Scan# 1113  
 Delta R.T. -0.244 min  
 Lab File: VX031654.D  
 Acq: 26 Sep 2022 17:26

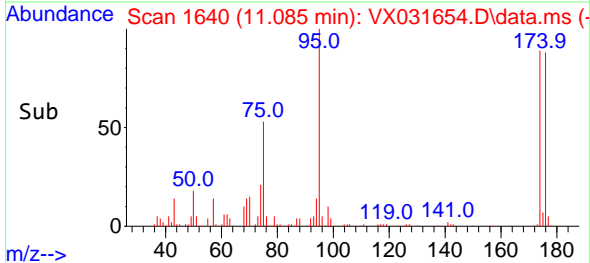
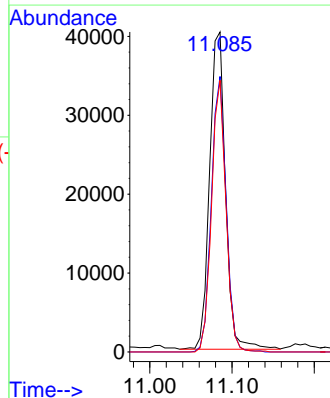
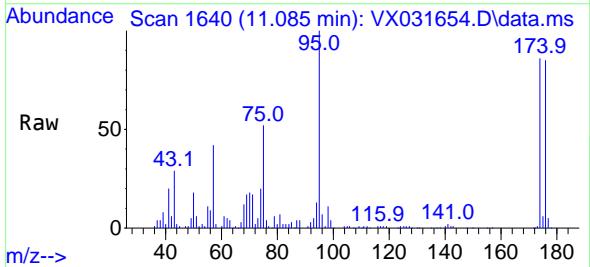
Instrument : MSVOA\_X  
 ClientSampleId : D22021-6DL

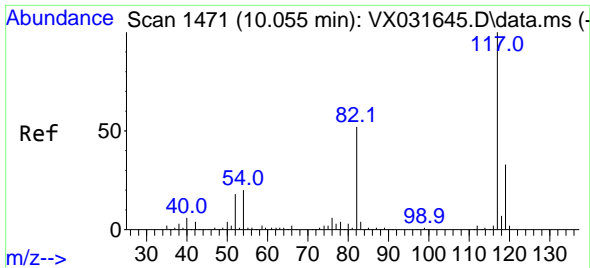
Tgt Ion:129 Resp: 113  
 Ion Ratio Lower Upper  
 129 100  
 127 0.0 38.7 116.1#



#62  
 4-Bromofluorobenzene  
 Concen: 50.203 ug/l  
 RT: 11.085 min Scan# 1640  
 Delta R.T. 0.006 min  
 Lab File: VX031654.D  
 Acq: 26 Sep 2022 17:26

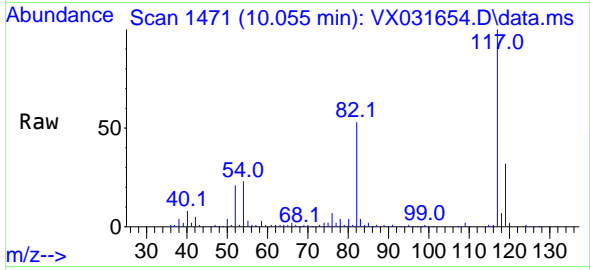
Tgt Ion: 95 Resp: 54018  
 Ion Ratio Lower Upper  
 95 100  
 174 80.8 0.0 153.2  
 176 77.6 0.0 144.0





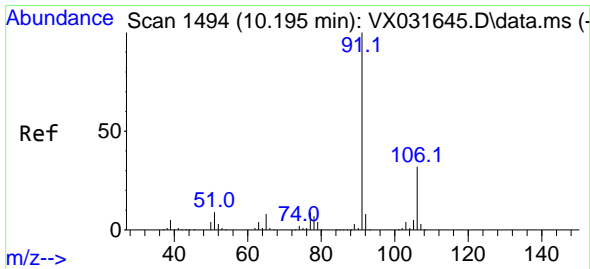
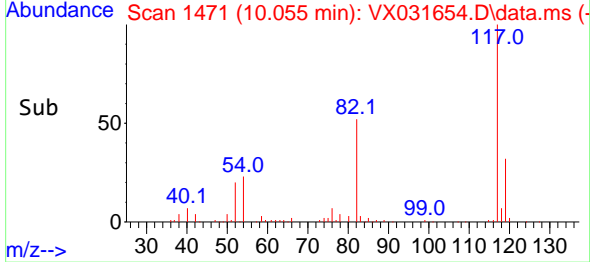
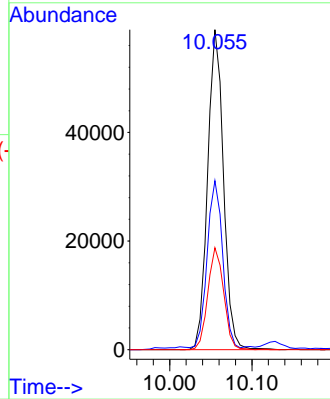
#63  
 Chlorobenzene-d5  
 Concen: 50.000 ug/l  
 RT: 10.055 min Scan# 1471  
 Delta R.T. 0.000 min  
 Lab File: VX031654.D  
 Acq: 26 Sep 2022 17:26

Instrument : MSVOA\_X  
 ClientSampleId : D22021-6DL



Tgt Ion:117 Resp: 79007

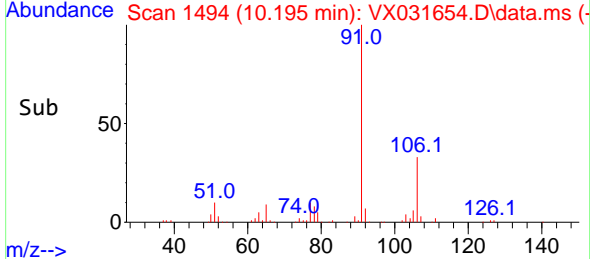
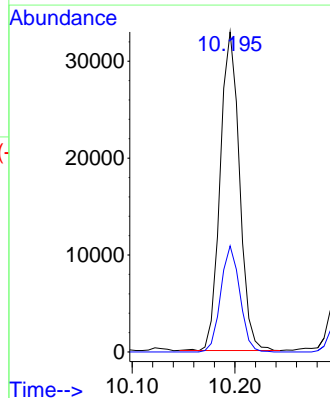
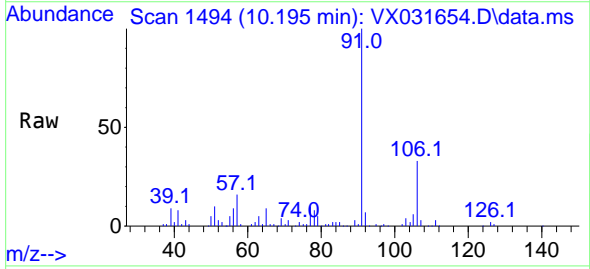
Ion	Ratio	Lower	Upper
117	100		
82	51.9	46.8	70.2
119	31.9	26.4	39.6

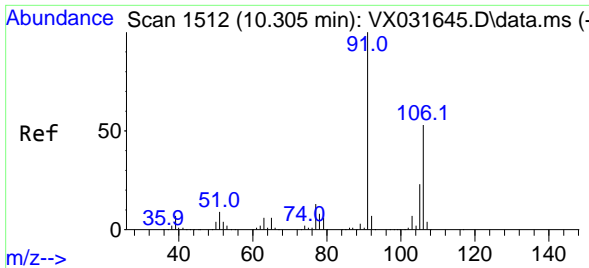


#67  
 Ethyl Benzene  
 Concen: 11.427 ug/l  
 RT: 10.195 min Scan# 1494  
 Delta R.T. 0.000 min  
 Lab File: VX031654.D  
 Acq: 26 Sep 2022 17:26

Tgt Ion: 91 Resp: 42788

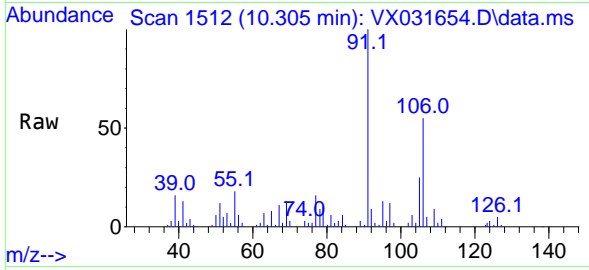
Ion	Ratio	Lower	Upper
91	100		
106	33.3	25.2	37.8



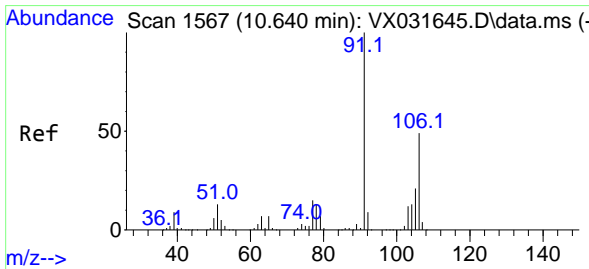
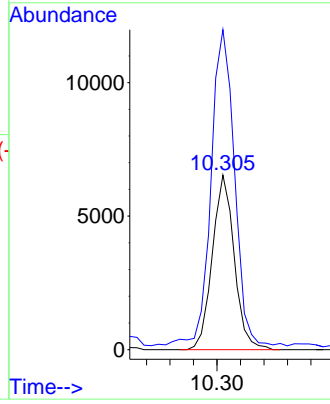
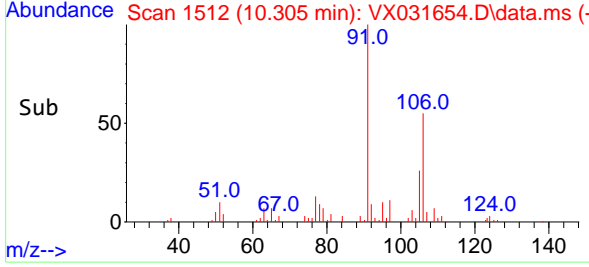


#68  
 m/p-Xylenes  
 Concen: 5.633 ug/l  
 RT: 10.305 min Scan# 1512  
 Delta R.T. -0.000 min  
 Lab File: VX031654.D  
 Acq: 26 Sep 2022 17:26

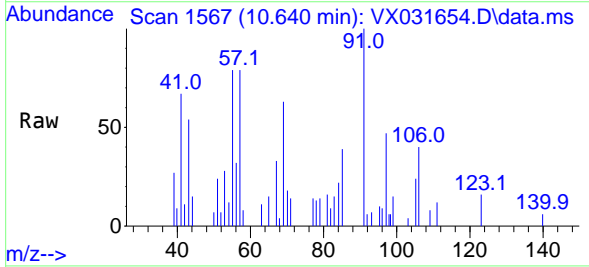
Instrument : MSVOA\_X  
 ClientSampleId : D22021-6DL



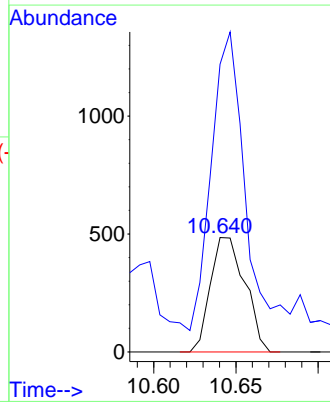
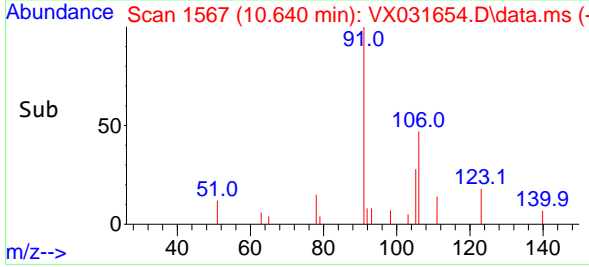
Tgt Ion:106 Resp: 8474  
 Ion Ratio Lower Upper  
 106 100  
 91 193.2 161.0 241.4



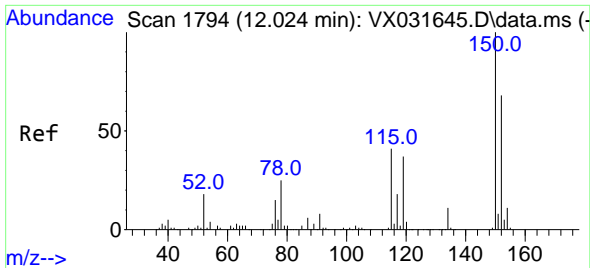
#69  
 o-Xylene  
 Concen: 0.482 ug/l  
 RT: 10.640 min Scan# 1567  
 Delta R.T. -0.006 min  
 Lab File: VX031654.D  
 Acq: 26 Sep 2022 17:26



Tgt Ion:106 Resp: 709  
 Ion Ratio Lower Upper  
 106 100  
 91 271.9 107.2 321.6

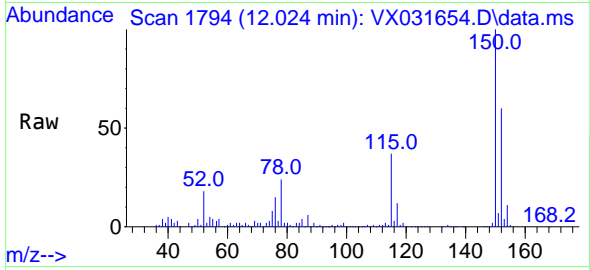




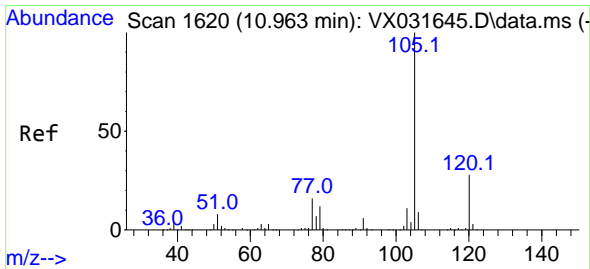
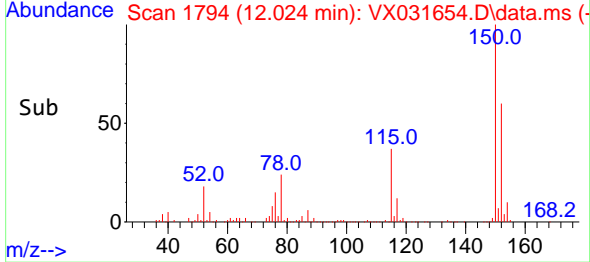
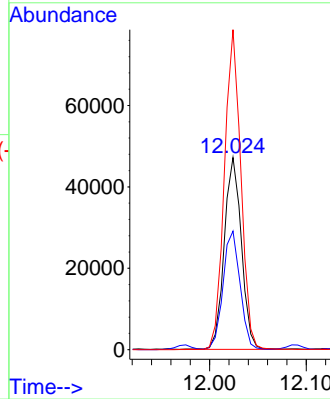


#72  
 1,4-Dichlorobenzene-d4  
 Concen: 50.000 ug/l  
 RT: 12.024 min Scan# 11  
 Delta R.T. 0.000 min  
 Lab File: VX031654.D  
 Acq: 26 Sep 2022 17:26

Instrument :  
 MSVOA\_X  
 ClientSampleId :  
 D22021-6DL

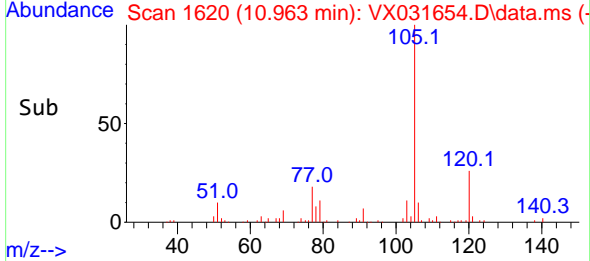
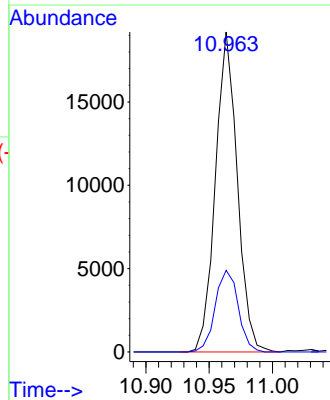
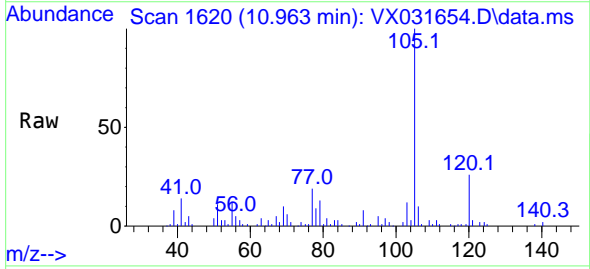


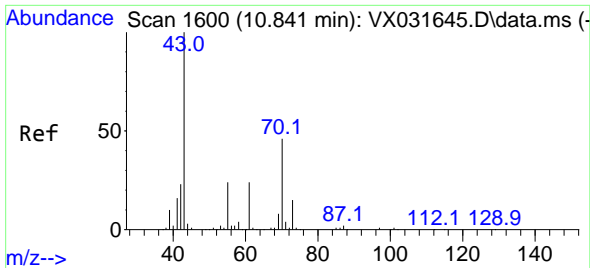
Tgt Ion:152 Resp: 57923  
 Ion Ratio Lower Upper  
 152 100  
 115 60.9 43.4 130.1  
 150 160.7 0.0 346.8



#73  
 Isopropylbenzene  
 Concen: 6.148 ug/l  
 RT: 10.963 min Scan# 1620  
 Delta R.T. 0.000 min  
 Lab File: VX031654.D  
 Acq: 26 Sep 2022 17:26

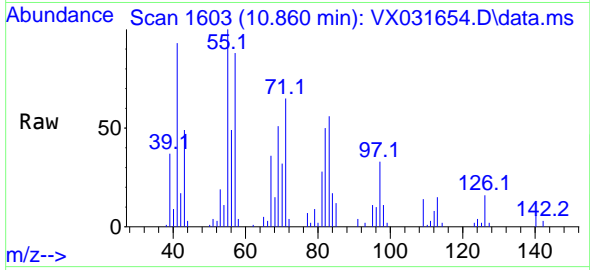
Tgt Ion:105 Resp: 23029  
 Ion Ratio Lower Upper  
 105 100  
 120 26.8 13.7 41.0





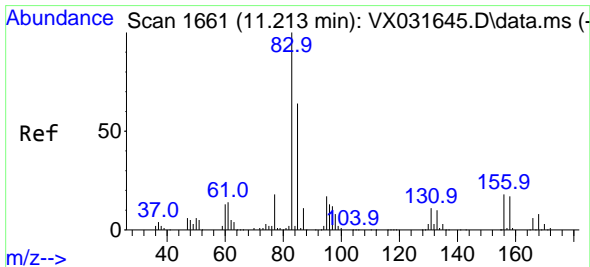
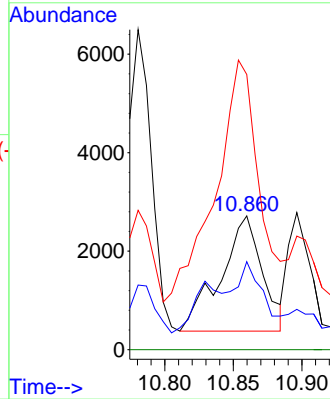
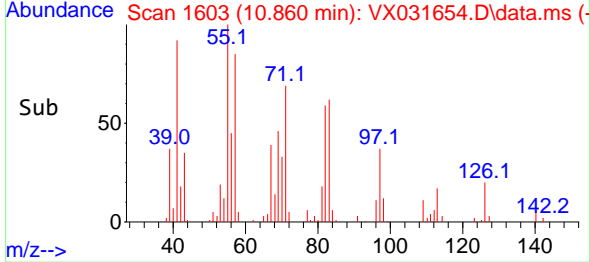
#74  
 N-amy1 acetate  
 Concen: 4.083 ug/l  
 RT: 10.860 min Scan# 1603  
 Delta R.T. 0.018 min  
 Lab File: VX031654.D  
 Acq: 26 Sep 2022 17:26

Instrument : MSVOA\_X  
 ClientSampleId : D22021-6DL

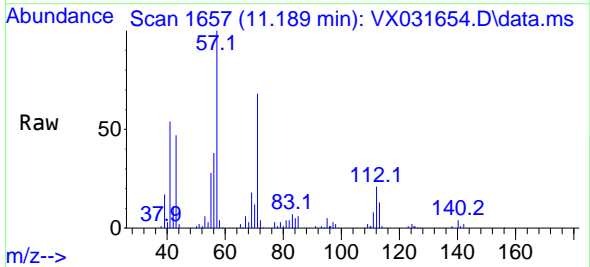


Tgt Ion: 43 Resp: 4961

Ion	Ratio	Lower	Upper
43	100		
70	27.1	33.4	50.2#
55	214.0	18.2	27.2#
61	0.0	19.3	28.9#

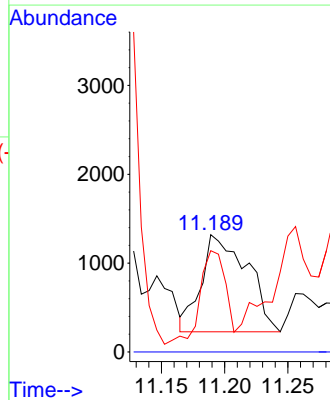
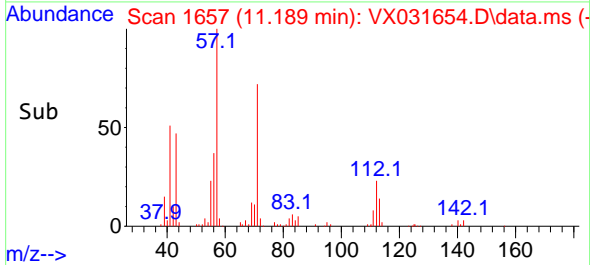


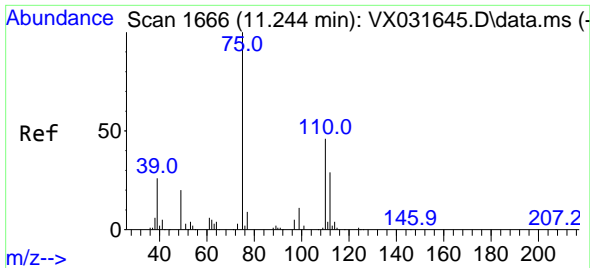
#75  
 1,1,2,2-Tetrachloroethane  
 Concen: 2.324 ug/l  
 RT: 11.189 min Scan# 1657  
 Delta R.T. -0.024 min  
 Lab File: VX031654.D  
 Acq: 26 Sep 2022 17:26



Tgt Ion: 83 Resp: 2766

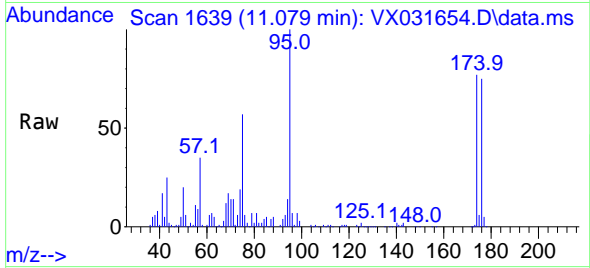
Ion	Ratio	Lower	Upper
83	100		
131	0.0	5.1	15.4#
85	51.1	32.6	97.8



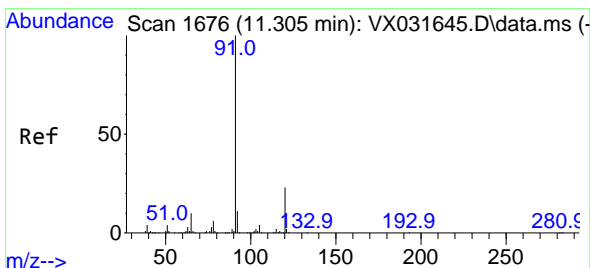
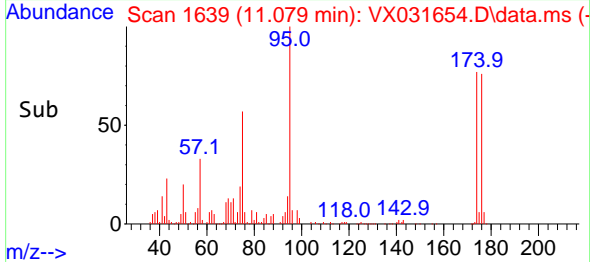
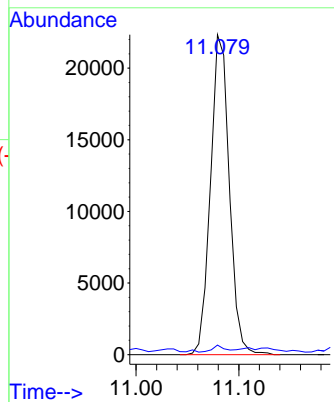


#76  
 1,2,3-Trichloropropane  
 Concen: 27.008 ug/l  
 RT: 11.079 min Scan# 1639  
 Delta R.T. -0.159 min  
 Lab File: VX031654.D  
 Acq: 26 Sep 2022 17:26

Instrument : MSVOA\_X  
 Client Sample Id : D22021-6DL

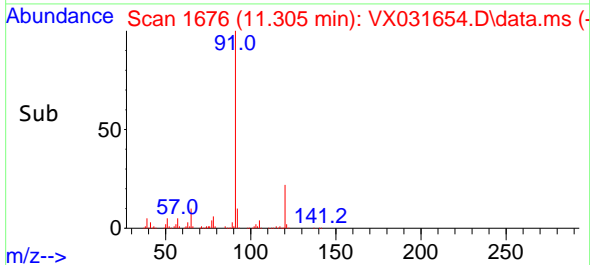
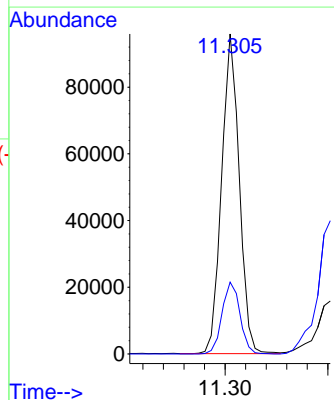
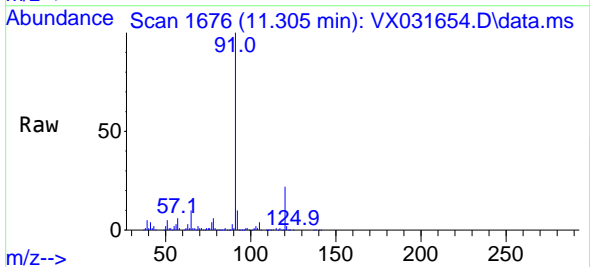


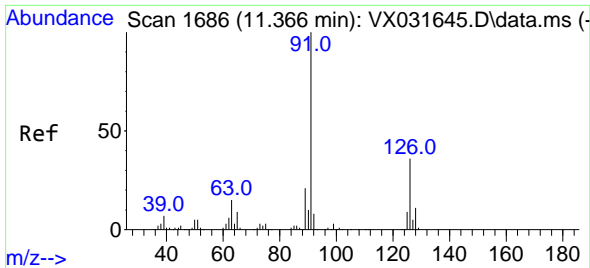
Tgt Ion: 75 Resp: 28361  
 Ion Ratio Lower Upper  
 75 100  
 77 0.0 20.3 60.9#



#78  
 n-propylbenzene  
 Concen: 27.309 ug/l  
 RT: 11.305 min Scan# 1676  
 Delta R.T. -0.000 min  
 Lab File: VX031654.D  
 Acq: 26 Sep 2022 17:26

Tgt Ion: 91 Resp: 113835  
 Ion Ratio Lower Upper  
 91 100  
 120 22.9 11.8 35.4

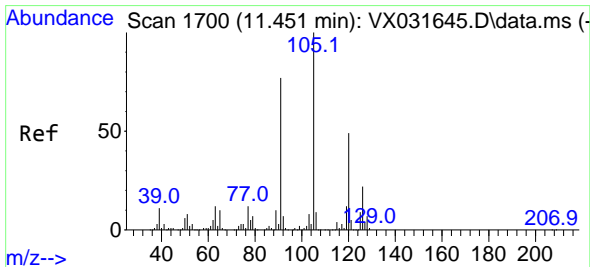
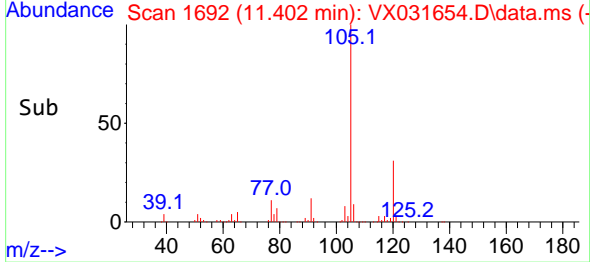
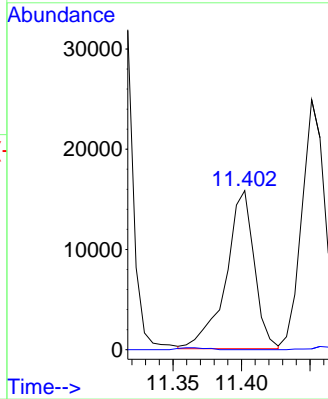
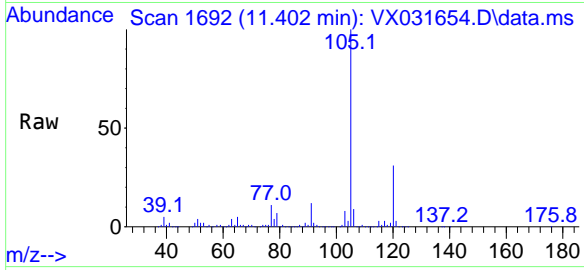




#79  
 2-Chlorotoluene  
 Concen: 8.818 ug/l  
 RT: 11.402 min Scan# 11  
 Delta R.T. 0.036 min  
 Lab File: VX031654.D  
 Acq: 26 Sep 2022 17:26

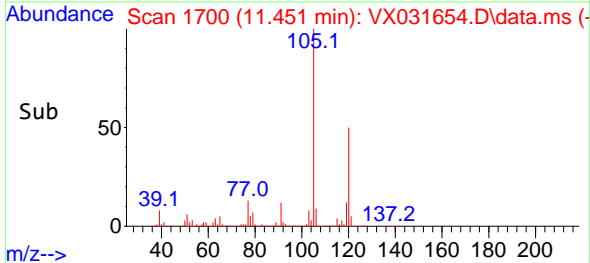
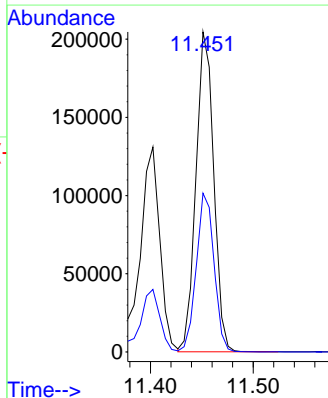
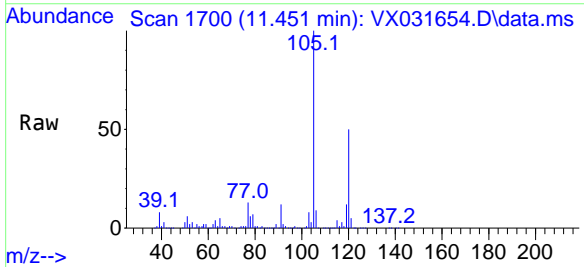
Instrument : MSVOA\_X  
 ClientSampleId : D22021-6DL

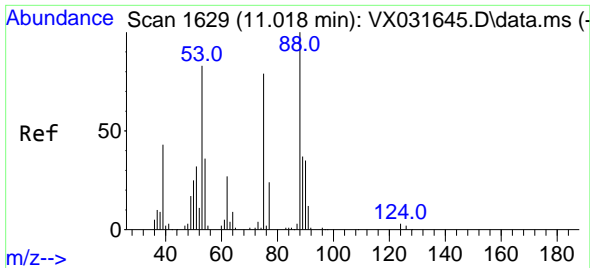
Tgt Ion: 91 Resp: 22697  
 Ion Ratio Lower Upper  
 91 100  
 126 0.0 17.4 52.3#



#80  
 1,3,5-Trimethylbenzene  
 Concen: 77.569 ug/l  
 RT: 11.451 min Scan# 1700  
 Delta R.T. 0.000 min  
 Lab File: VX031654.D  
 Acq: 26 Sep 2022 17:26

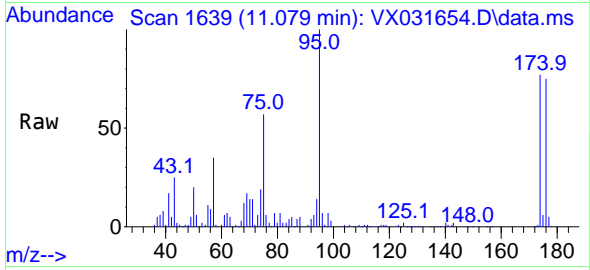
Tgt Ion: 105 Resp: 246308  
 Ion Ratio Lower Upper  
 105 100  
 120 49.7 24.5 73.5



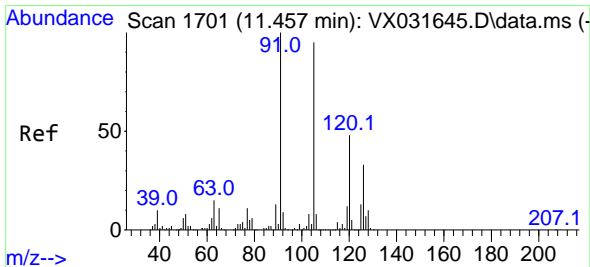
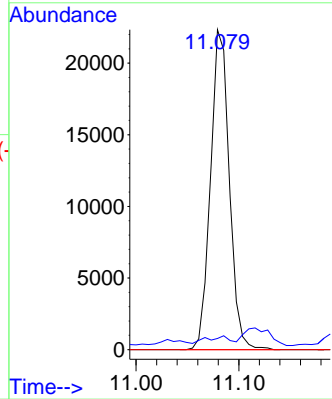
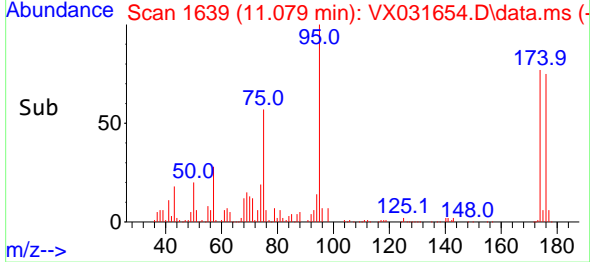


#81  
 trans-1,4-Dichloro-2-butene  
 Concen: 89.327 ug/l  
 RT: 11.079 min Scan# 1700  
 Delta R.T. 0.061 min  
 Lab File: VX031654.D  
 Acq: 26 Sep 2022 17:26

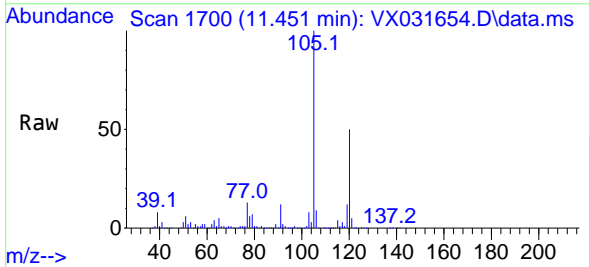
Instrument :  
 MSVOA\_X  
 ClientSampleId :  
 D22021-6DL



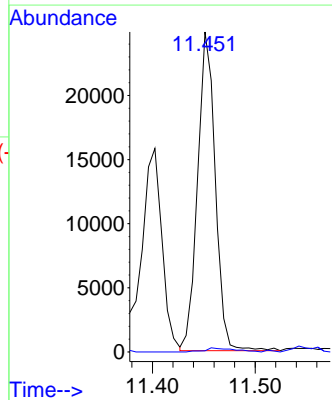
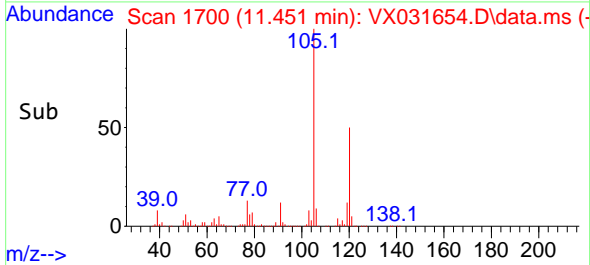
Tgt Ion: 75 Resp: 28361  
 Ion Ratio Lower Upper  
 75 100  
 53 3.1 77.6 116.4#  
 89 0.0 37.4 56.0#

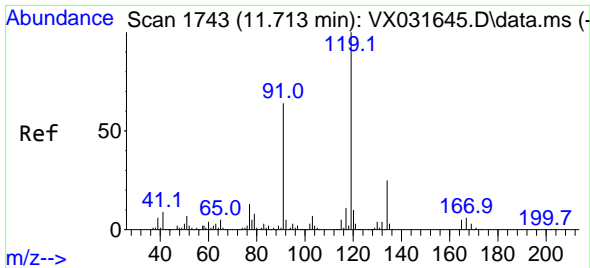


#82  
 4-Chlorotoluene  
 Concen: 10.033 ug/l  
 RT: 11.451 min Scan# 1700  
 Delta R.T. -0.006 min  
 Lab File: VX031654.D  
 Acq: 26 Sep 2022 17:26



Tgt Ion: 91 Resp: 29836  
 Ion Ratio Lower Upper  
 91 100  
 126 2.0 15.1 45.3#



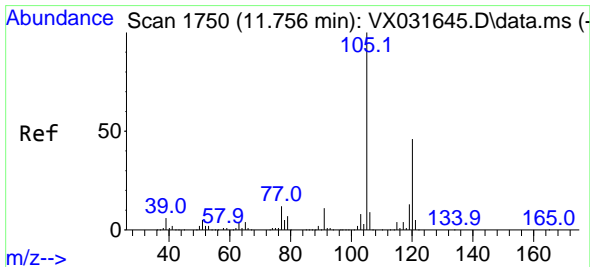
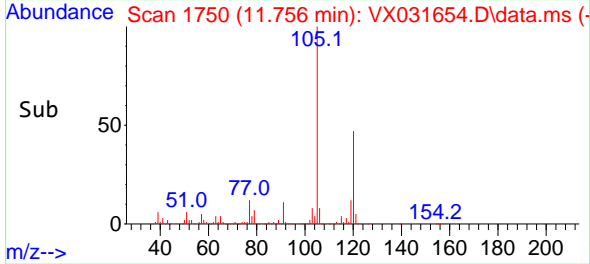
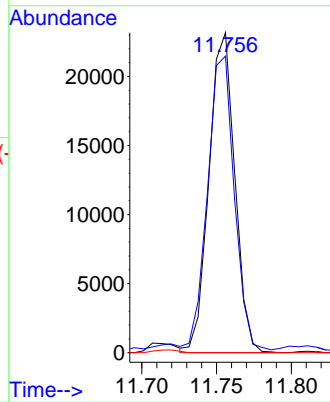
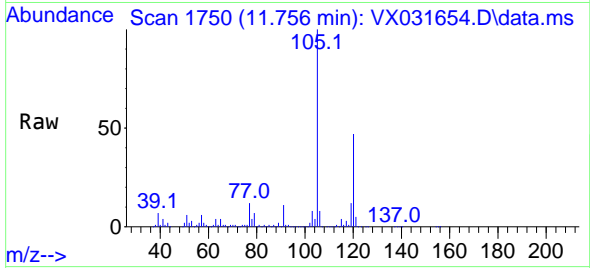


#83  
 tert-Butylbenzene  
 Concen: 9.082 ug/l  
 RT: 11.756 min Scan# 1750  
 Delta R.T. 0.037 min  
 Lab File: VX031654.D  
 Acq: 26 Sep 2022 17:26

Instrument : MSVOA\_X  
 ClientSampleId : D22021-6DL

Tgt Ion:119 Resp: 27811

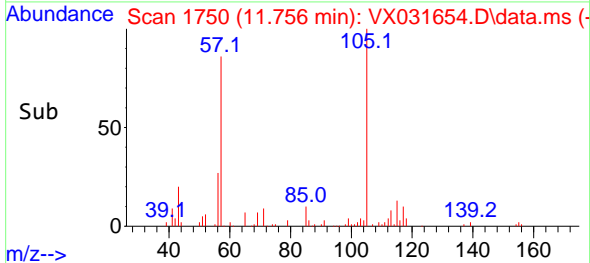
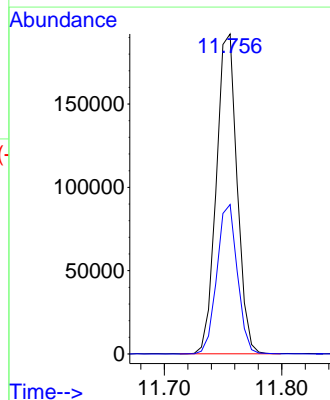
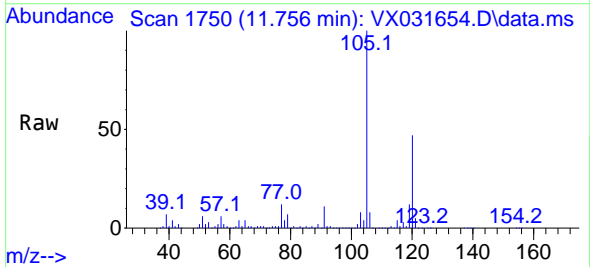
Ion	Ratio	Lower	Upper
119	100		
91	97.0	29.2	87.6#
134	0.0	11.6	34.8#

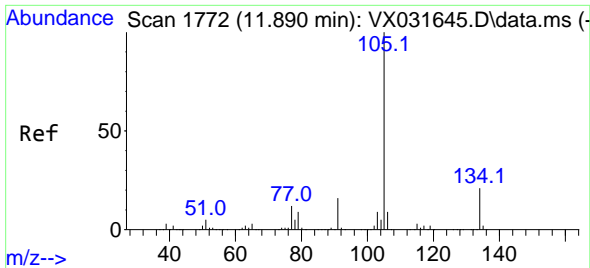


#84  
 1,2,4-Trimethylbenzene  
 Concen: 74.950 ug/l  
 RT: 11.756 min Scan# 1750  
 Delta R.T. -0.000 min  
 Lab File: VX031654.D  
 Acq: 26 Sep 2022 17:26

Tgt Ion:105 Resp: 235571

Ion	Ratio	Lower	Upper
105	100		
120	46.3	22.6	67.8

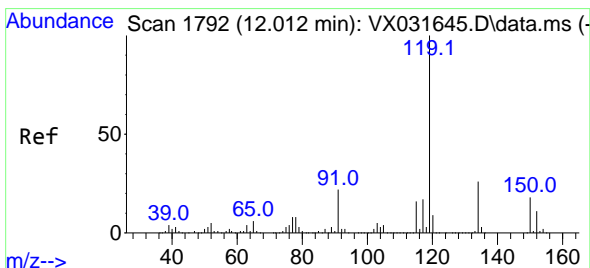
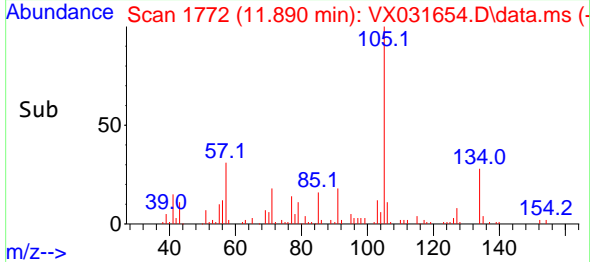
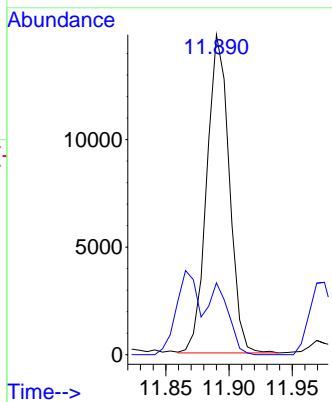
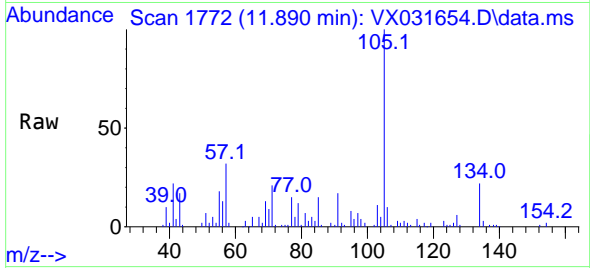




#85  
 sec-Butylbenzene  
 Concen: 4.693 ug/l  
 RT: 11.890 min Scan# 1772  
 Delta R.T. 0.000 min  
 Lab File: VX031654.D  
 Acq: 26 Sep 2022 17:26

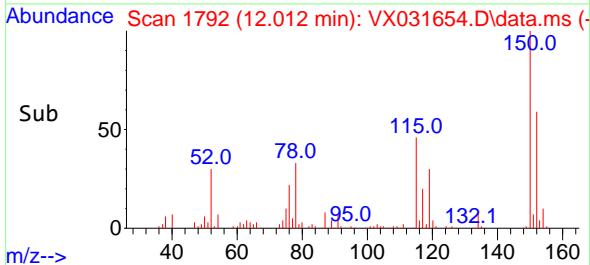
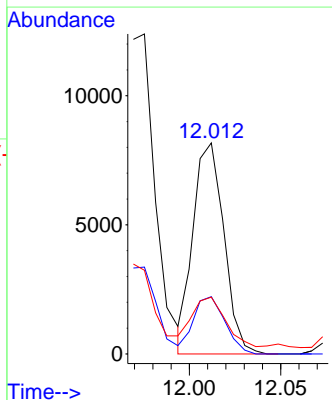
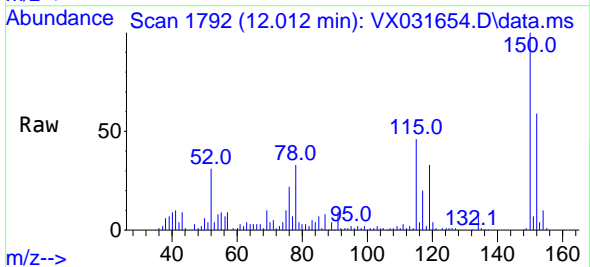
Instrument : MSVOA\_X  
 ClientSampleId : D22021-6DL

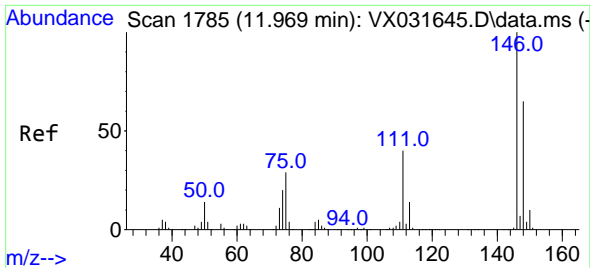
Tgt Ion:105 Resp: 18264  
 Ion Ratio Lower Upper  
 105 100  
 134 0.0 10.4 31.1#



#86  
 p-Isopropyltoluene  
 Concen: 2.859 ug/l  
 RT: 12.012 min Scan# 1792  
 Delta R.T. 0.000 min  
 Lab File: VX031654.D  
 Acq: 26 Sep 2022 17:26

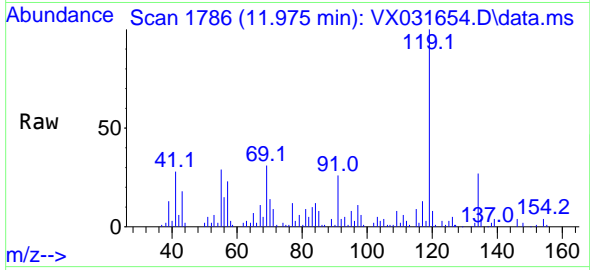
Tgt Ion:119 Resp: 9595  
 Ion Ratio Lower Upper  
 119 100  
 134 28.0 13.4 40.2  
 91 28.2 12.4 37.2



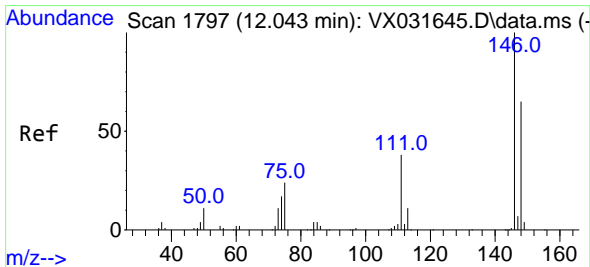
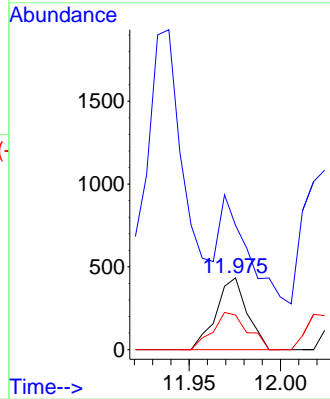
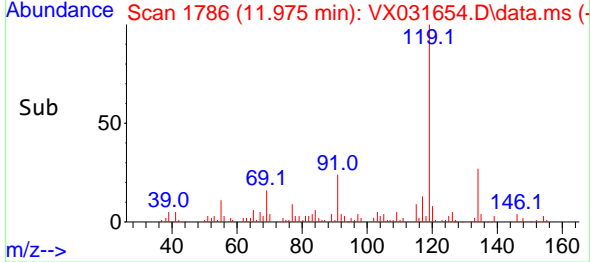


#87  
 1,3-Dichlorobenzene  
 Concen: 0.277 ug/l  
 RT: 11.975 min Scan# 1786  
 Delta R.T. 0.006 min  
 Lab File: VX031654.D  
 Acq: 26 Sep 2022 17:26

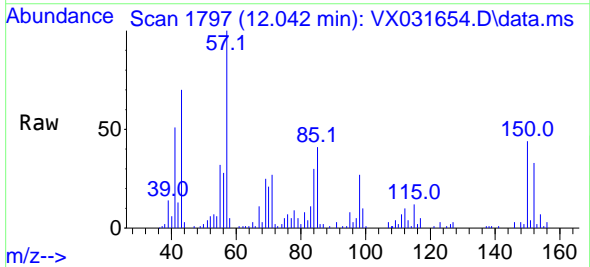
Instrument :  
 MSVOA\_X  
 ClientSampleId :  
 D22021-6DL



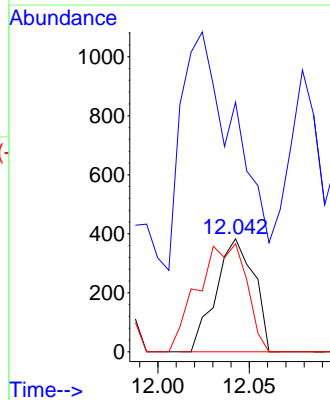
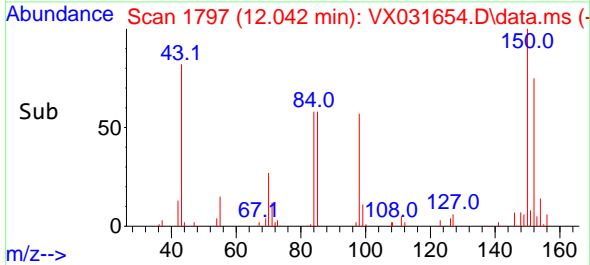
Tgt Ion:146 Resp: 512  
 Ion Ratio Lower Upper  
 146 100  
 111 132.6 19.8 59.4#  
 148 58.0 31.5 94.5



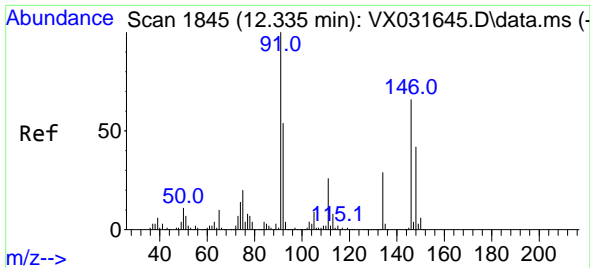
#88  
 1,4-Dichlorobenzene  
 Concen: 0.287 ug/l  
 RT: 12.042 min Scan# 1797  
 Delta R.T. -0.001 min  
 Lab File: VX031654.D  
 Acq: 26 Sep 2022 17:26



Tgt Ion:146 Resp: 555  
 Ion Ratio Lower Upper  
 146 100  
 111 293.0 20.5 61.5#  
 148 122.2 32.0 96.2#





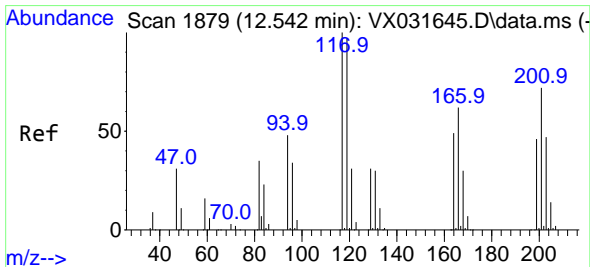
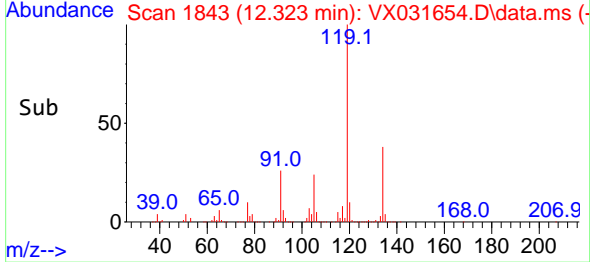
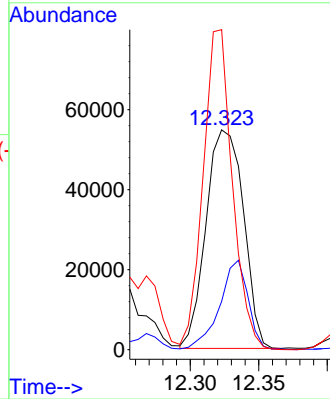
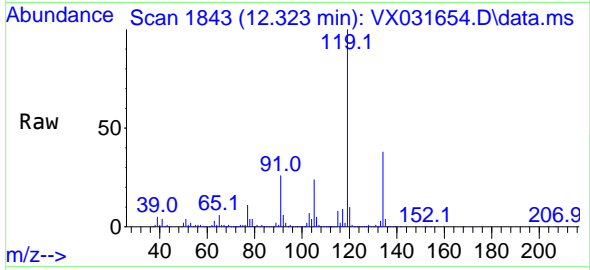


#89  
 n-Butylbenzene  
 Concen: 37.911 ug/l  
 RT: 12.323 min Scan# 1843  
 Delta R.T. -0.012 min  
 Lab File: VX031654.D  
 Acq: 26 Sep 2022 17:26

Instrument : MSVOA\_X  
 ClientSampleId : D22021-6DL

Tgt Ion: 91 Resp: 103928

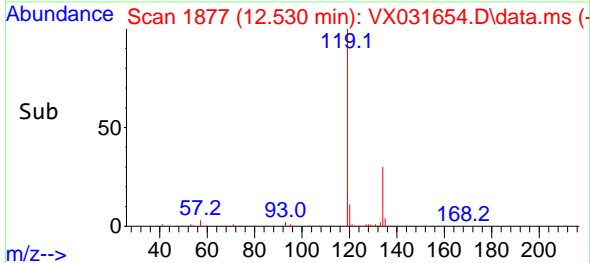
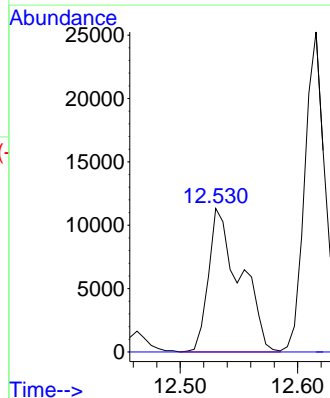
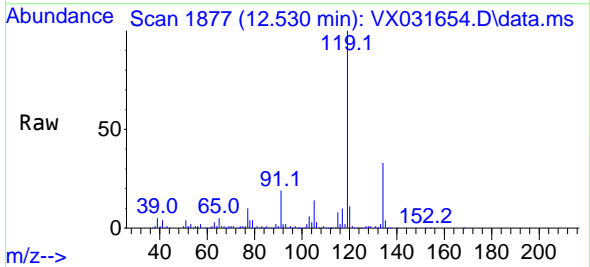
Ion	Ratio	Lower	Upper
91	100		
92	31.2	27.0	81.0
134	114.5	13.3	39.9#

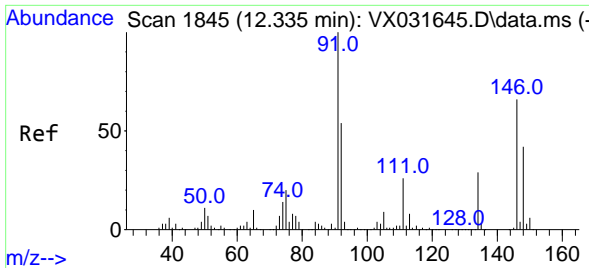


#90  
 Hexachloroethane  
 Concen: 39.454 ug/l  
 RT: 12.530 min Scan# 1877  
 Delta R.T. -0.012 min  
 Lab File: VX031654.D  
 Acq: 26 Sep 2022 17:26

Tgt Ion: 117 Resp: 21231

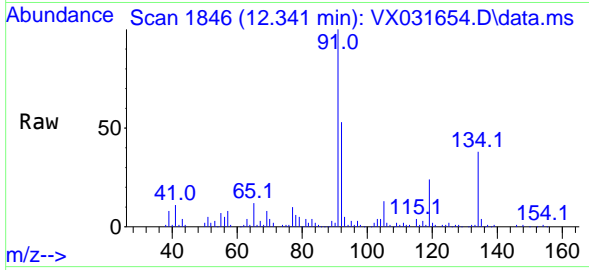
Ion	Ratio	Lower	Upper
117	100		
201	0.0	34.8	104.4#



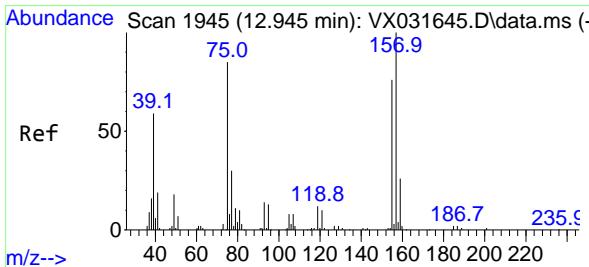
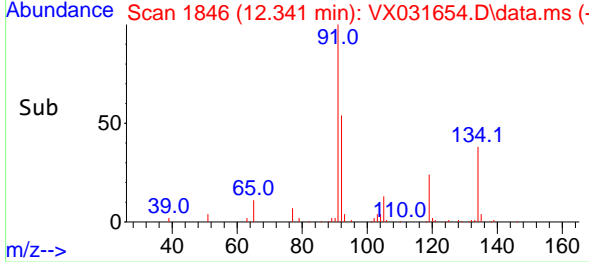
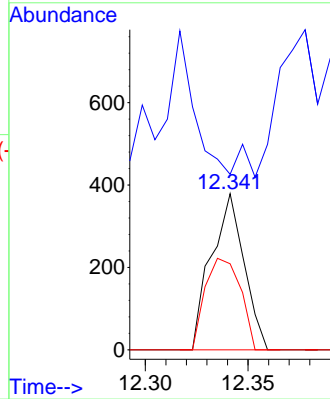


#91  
 1,2-Dichlorobenzene  
 Concen: 0.227 ug/l  
 RT: 12.341 min Scan# 1846  
 Delta R.T. 0.006 min  
 Lab File: VX031654.D  
 Acq: 26 Sep 2022 17:26

Instrument : MSVOA\_X  
 ClientSampleId : D22021-6DL

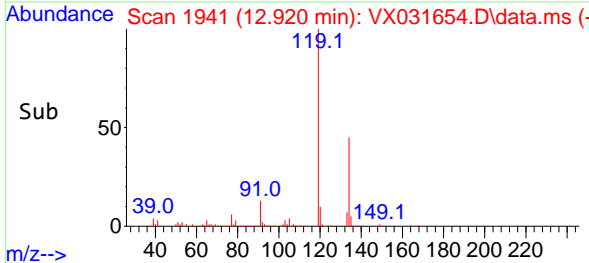
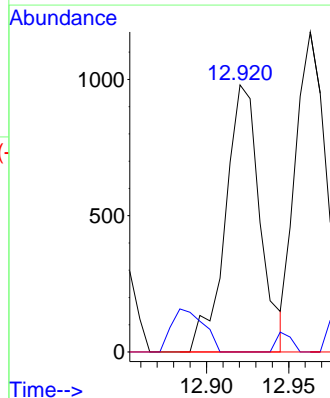
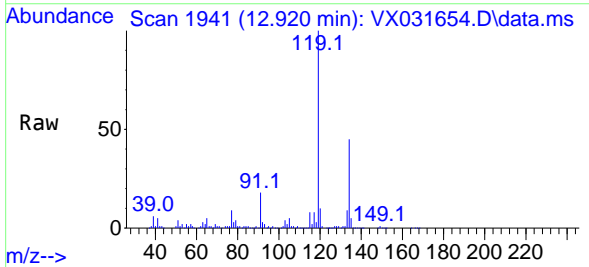


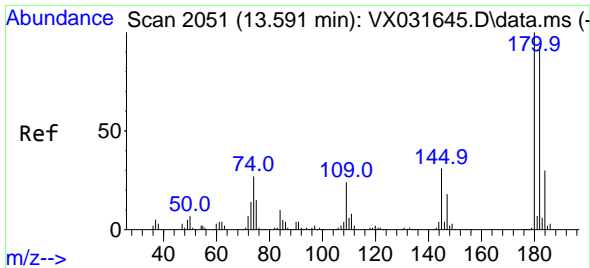
Tgt Ion:146 Resp: 420  
 Ion Ratio Lower Upper  
 146 100  
 111 0.0 20.6 61.8#  
 148 63.1 31.6 95.0



#92  
 1,2-Dibromo-3-Chloropropane  
 Concen: 6.038 ug/l  
 RT: 12.920 min Scan# 1941  
 Delta R.T. -0.025 min  
 Lab File: VX031654.D  
 Acq: 26 Sep 2022 17:26

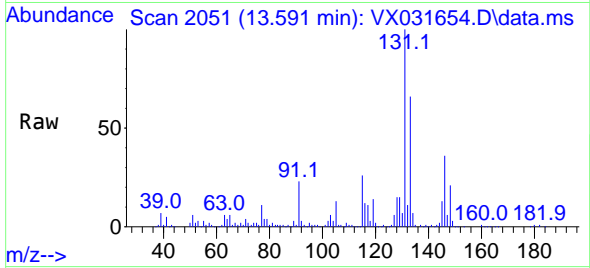
Tgt Ion: 75 Resp: 1440  
 Ion Ratio Lower Upper  
 75 100  
 155 0.0 40.3 120.8#  
 157 0.0 51.5 154.5#



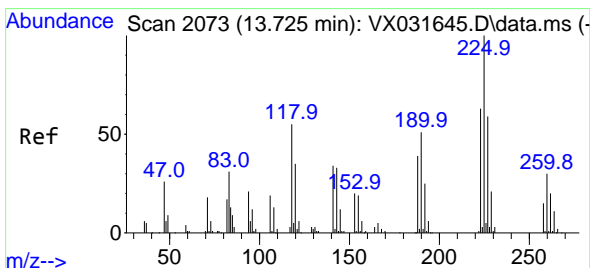
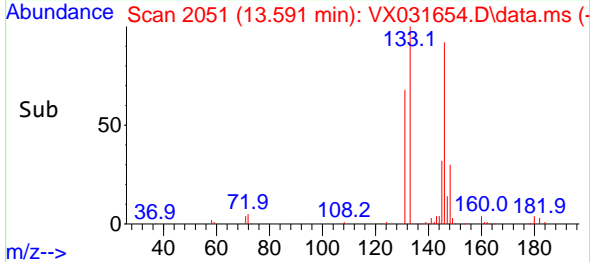
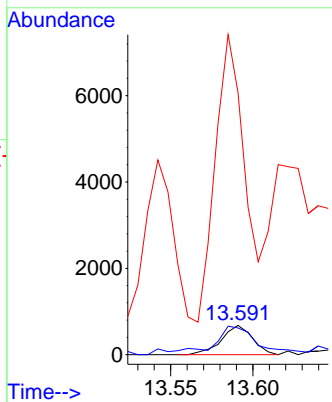


#93  
 1,2,4-Trichlorobenzene  
 Concen: 0.824 ug/l  
 RT: 13.591 min Scan# 2051  
 Delta R.T. -0.000 min  
 Lab File: VX031654.D  
 Acq: 26 Sep 2022 17:26

Instrument : MSVOA\_X  
 ClientSampleId : D22021-6DL

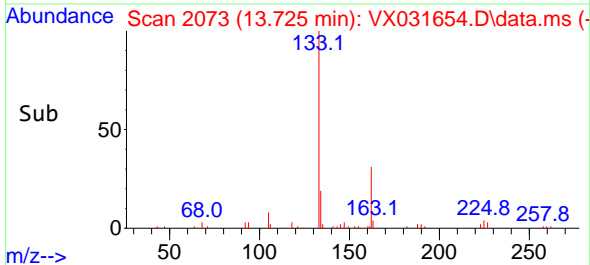
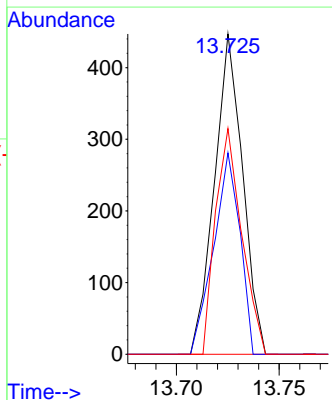
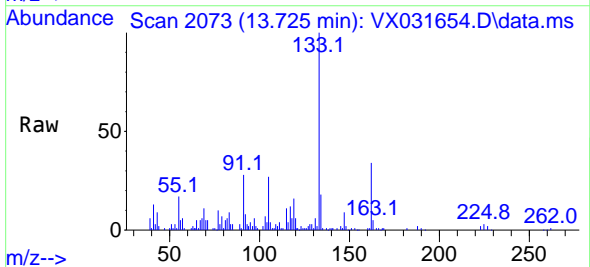


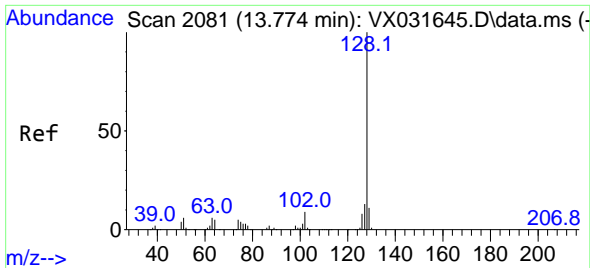
Tgt Ion:180 Resp: 891  
 Ion Ratio Lower Upper  
 180 100  
 182 144.3 46.9 140.6#  
 145 921.5 16.7 50.1#



#94  
 Hexachlorobutadiene  
 Concen: 1.013 ug/l  
 RT: 13.725 min Scan# 2073  
 Delta R.T. 0.000 min  
 Lab File: VX031654.D  
 Acq: 26 Sep 2022 17:26

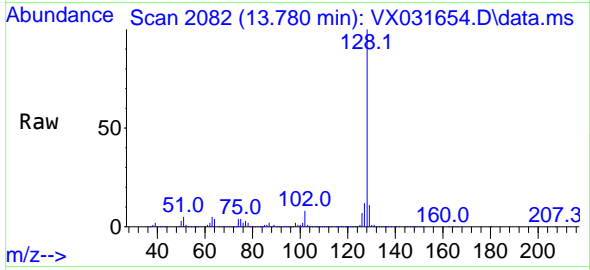
Tgt Ion:225 Resp: 427  
 Ion Ratio Lower Upper  
 225 100  
 223 58.5 30.8 92.4  
 227 65.6 32.3 96.9



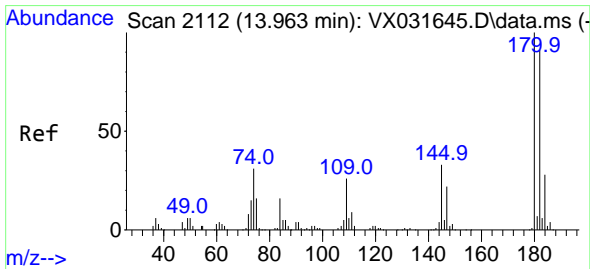
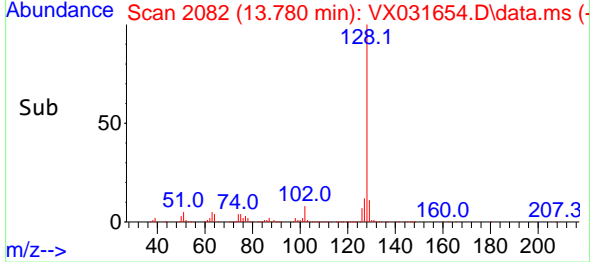
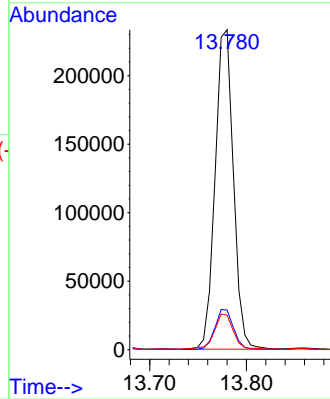


#95  
 Naphthalene  
 Concen: 84.802 ug/l  
 RT: 13.780 min Scan# 2081  
 Delta R.T. 0.006 min  
 Lab File: VX031654.D  
 Acq: 26 Sep 2022 17:26

Instrument : MSVOA\_X  
 ClientSampleId : D22021-6DL



Tgt Ion:128 Resp: 306243  
 Ion Ratio Lower Upper  
 128 100  
 127 12.9 10.4 15.6  
 129 11.7 8.8 13.2



#96  
 1,2,3-Trichlorobenzene  
 Concen: 0.917 ug/l  
 RT: 13.969 min Scan# 2113  
 Delta R.T. 0.006 min  
 Lab File: VX031654.D  
 Acq: 26 Sep 2022 17:26

Tgt Ion:180 Resp: 1017  
 Ion Ratio Lower Upper  
 180 100  
 182 75.3 47.9 143.8  
 145 1047.1 17.6 52.8#

