

Data Path : Z:\voasrv\HPCHEM1\MSVOA_X\Data\VX092622\
 Data File : VX031660.D
 Acq On : 26 Sep 2022 19:46
 Operator : JC/MD
 Sample : N4731-01DL 10X
 Misc : 5.0mL/MSVOA_X/WATER
 ALS Vial : 22 Sample Multiplier: 1

Instrument :
 MSVOA_X
 ClientSampleId :
 SB-1DL

Quant Time: Sep 27 01:55:45 2022
 Quant Method : Z:\voasrv\HPCHEM1\MSVOA_X\Method\82X092622W.M
 Quant Title : SW846 8260
 QLast Update : Tue Sep 27 01:44:18 2022
 Response via : Initial Calibration

Compound	R.T.	QIon	Response	Conc	Units	Dev(Min)
Internal Standards						
1) Pentafluorobenzene	5.556	168	40932	50.000	ug/l	0.00
34) 1,4-Difluorobenzene	6.763	114	70032	50.000	ug/l	0.00
63) Chlorobenzene-d5	10.055	117	74354	50.000	ug/l	0.00
72) 1,4-Dichlorobenzene-d4	12.024	152	49105	50.000	ug/l	0.00
System Monitoring Compounds						
33) 1,2-Dichloroethane-d4	5.952	65	52269	60.166	ug/l	0.00
Spiked Amount	50.000	Range 74 - 125	Recovery	=	120.340%	
35) Dibromofluoromethane	5.385	113	41742	50.024	ug/l	0.00
Spiked Amount	50.000	Range 75 - 124	Recovery	=	100.040%	
50) Toluene-d8	8.653	98	141919	46.912	ug/l	0.00
Spiked Amount	50.000	Range 86 - 113	Recovery	=	93.820%	
62) 4-Bromofluorobenzene	11.079	95	47784	43.095	ug/l	0.00
Spiked Amount	50.000	Range 83 - 123	Recovery	=	86.200%	
Target Compounds						
						Qvalue
3) Chloromethane	1.288	50	76	Below Cal	#	41
5) Bromomethane	1.617	94	554	Below Cal	#	56
6) Chloroethane	1.709	64	132	Below Cal	#	43
11) Tert butyl alcohol	2.947	59	3465	2.330	ug/l #	74
16) Acetone	2.392	43	2351	Below Cal		97
17) Carbon Disulfide	2.520	76	184	Below Cal	#	75
18) Methyl Acetate	2.709	43	301	0.386	ug/l #	52
20) Methylene Chloride	2.788	84	1433	0.948	ug/l #	78
25) 2-Butanone	4.568	43	487	1.174	ug/l #	49
36) 1,1-Dichloropropene	5.550	75	3276	3.419	ug/l #	49
37) Ethyl Acetate	4.733	43	441	0.456	ug/l #	68
38) Carbon Tetrachloride	5.556	117	4136	3.830	ug/l #	13
40) Benzene	6.037	78	269685	91.628	ug/l	97
42) 1,2-Dichloroethane	6.037	62	2691	2.364	ug/l #	75
43) Isopropyl Acetate	6.348	43	3228	2.122	ug/l	98
48) Methyl methacrylate	7.799	41	3112	4.651	ug/l #	46
51) 4-Methyl-2-Pentanone	8.549	43	2599	2.699	ug/l #	43
52) Toluene	8.720	92	126884	64.674	ug/l	99
53) t-1,3-Dichloropropene	8.720	75	1544	3.127	ug/l #	1
54) cis-1,3-Dichloropropene	8.549	75	963	0.895	ug/l #	61
55) 1,1,2-Trichloroethane	9.019	97	764	0.904	ug/l #	15
59) 2-Hexanone	9.378	43	2799	3.896	ug/l #	25
60) Dibromochloromethane	9.281	129	22	1.562	ug/l #	11
67) Ethyl Benzene	10.195	91	14009	3.976	ug/l	98
68) m/p-Xylenes	10.299	106	52839	37.320	ug/l	97
69) o-Xylene	10.640	106	46893	33.885	ug/l	93
70) Styrene	10.659	104	9079	4.030	ug/l #	21
73) Isopropylbenzene	10.963	105	703	0.221	ug/l	80
76) 1,2,3-Trichloropropane	11.079	75	26785	30.088	ug/l #	36
78) n-propylbenzene	11.305	91	1605	0.454	ug/l	91
79) 2-Chlorotoluene	11.378	91	1226	0.562	ug/l #	40
80) 1,3,5-Trimethylbenzene	11.451	105	14121	5.246	ug/l	100
81) trans-1,4-Dichloro-2-b...	11.079	75	26785	99.164	ug/l #	11
82) 4-Chlorotoluene	11.451	91	1871	0.742	ug/l #	44
83) tert-Butylbenzene	11.750	119	4136	1.593	ug/l #	53
84) 1,2,4-Trimethylbenzene	11.750	105	37149	13.942	ug/l	98

Data Path : Z:\voasrv\HPCHEM1\MSVOA_X\Data\VX092622\
Data File : VX031660.D
Acq On : 26 Sep 2022 19:46
Operator : JC/MD
Sample : N4731-01DL 10X
Misc : 5.0mL/MSVOA_X/WATER
ALS Vial : 22 Sample Multiplier: 1

Instrument :
MSVOA_X
ClientSampleId :
SB-1DL

Quant Time: Sep 27 01:55:45 2022
Quant Method : Z:\voasrv\HPCHEM1\MSVOA_X\Method\82X092622W.M
Quant Title : SW846 8260
QLast Update : Tue Sep 27 01:44:18 2022
Response via : Initial Calibration

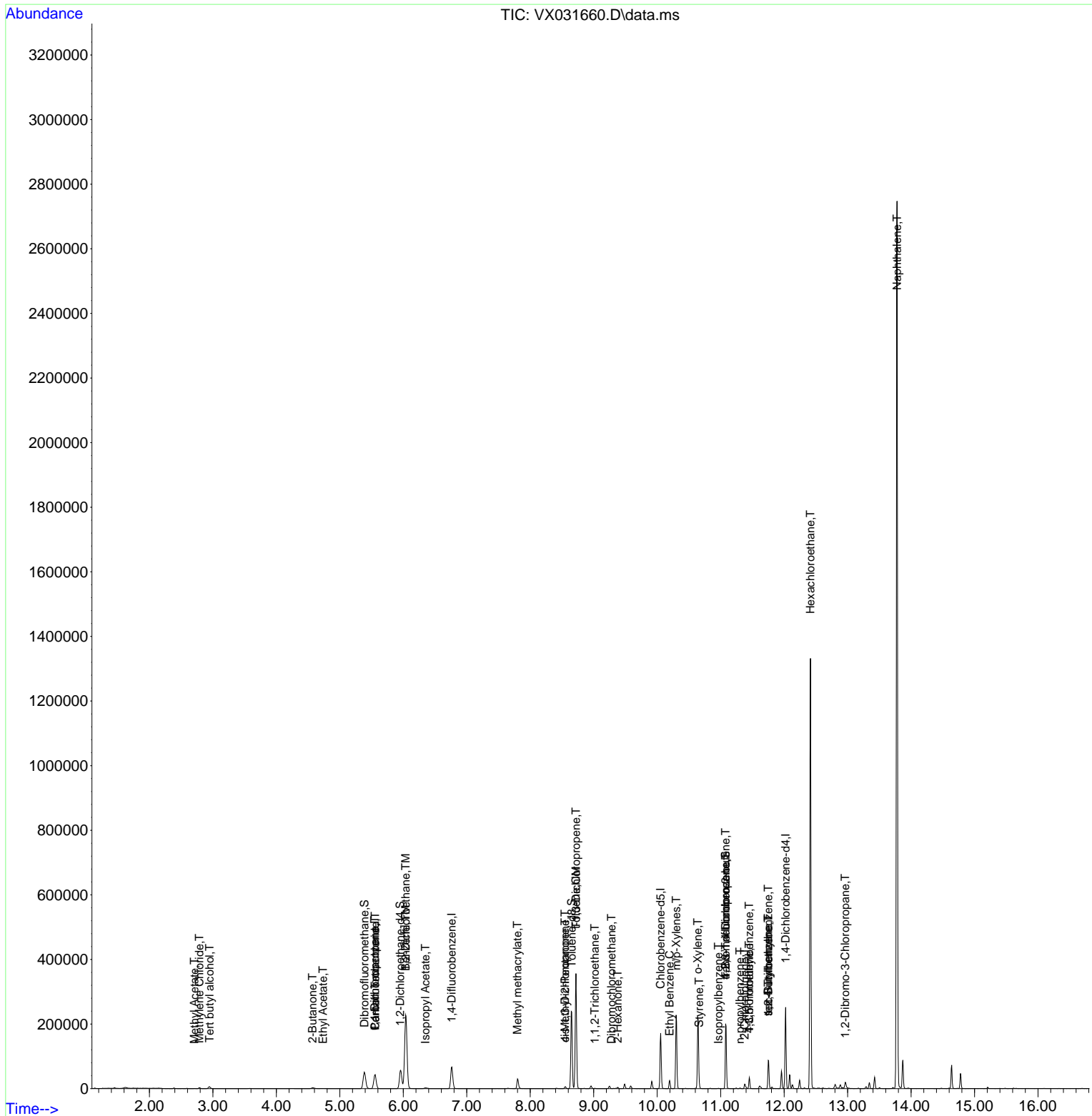
Compound	R.T.	QIon	Response	Conc	Units	Dev(Min)
85) sec-Butylbenzene	11.750	105	37149	11.260	ug/l #	56
90) Hexachloroethane	12.414	117	46940	102.893	ug/l #	15
92) 1,2-Dibromo-3-Chloropr...	12.963	75	333	1.647	ug/l #	3
95) Naphthalene	13.780	128	1691086	552.368	ug/l	99

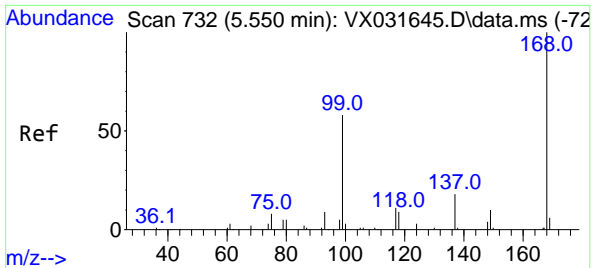
(#) = qualifier out of range (m) = manual integration (+) = signals summed

Data Path : Z:\voasrv\HPCHEM1\MSVOA_X\Data\VX092622\
 Data File : VX031660.D
 Acq On : 26 Sep 2022 19:46
 Operator : JC/MD
 Sample : N4731-01DL 10X
 Misc : 5.0mL/MSVOA_X/WATER
 ALS Vial : 22 Sample Multiplier: 1

Instrument :
 MSVOA_X
 ClientSampleId :
 SB-1DL

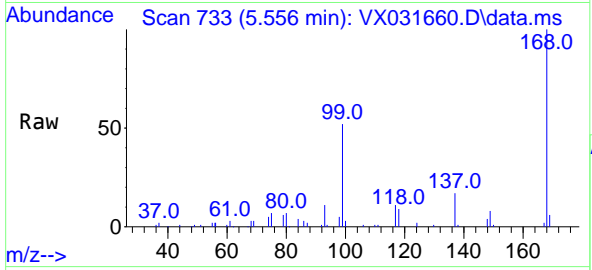
Quant Time: Sep 27 01:55:45 2022
 Quant Method : Z:\voasrv\HPCHEM1\MSVOA_X\Method\82X092622W.M
 Quant Title : SW846 8260
 QLast Update : Tue Sep 27 01:44:18 2022
 Response via : Initial Calibration



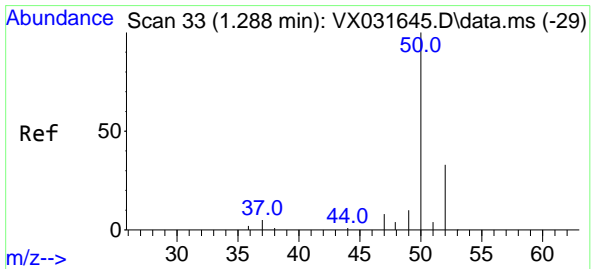
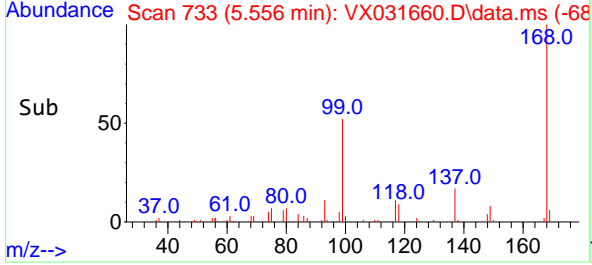
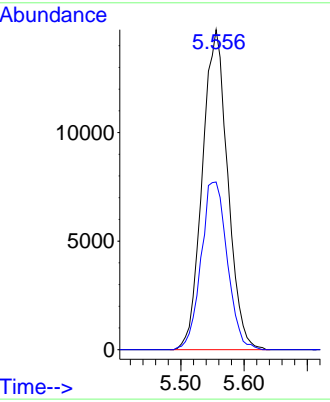


#1
 Pentafluorobenzene
 Concen: 50.000 ug/l
 RT: 5.556 min Scan# 71
 Delta R.T. -0.000 min
 Lab File: VX031660.D
 Acq: 26 Sep 2022 19:46

Instrument : MSVOA_X
 ClientSampleId : SB-1DL

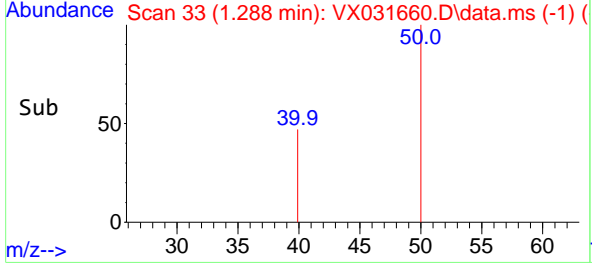
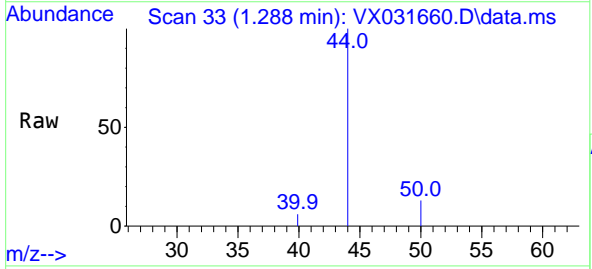
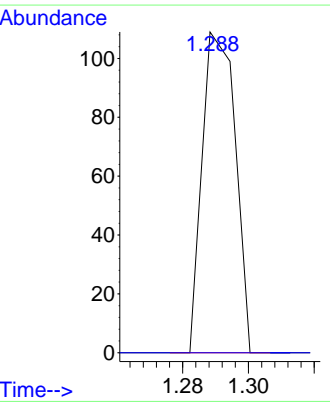


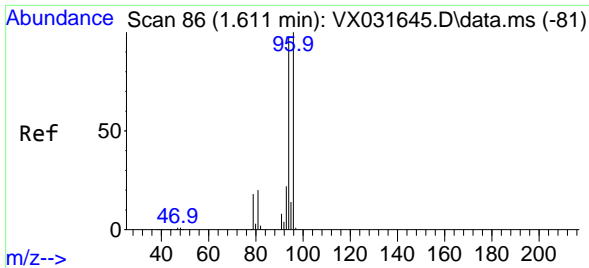
Tgt Ion:168 Resp: 40932
 Ion Ratio Lower Upper
 168 100
 99 52.4 48.8 73.2



#3
 Chloromethane
 Concen: Below Cal
 RT: 1.288 min Scan# 33
 Delta R.T. 0.000 min
 Lab File: VX031660.D
 Acq: 26 Sep 2022 19:46

Tgt Ion: 50 Resp: 76
 Ion Ratio Lower Upper
 50 100
 52 0.0 26.9 40.3#

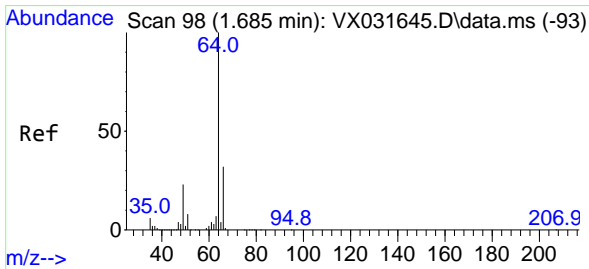
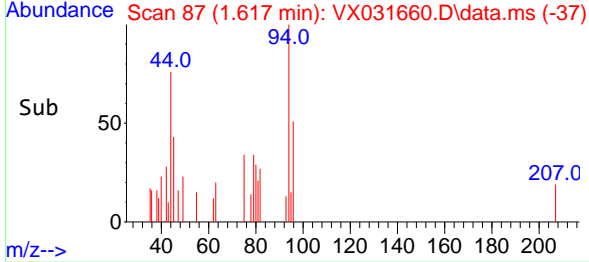
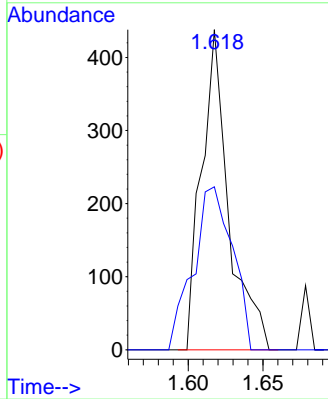
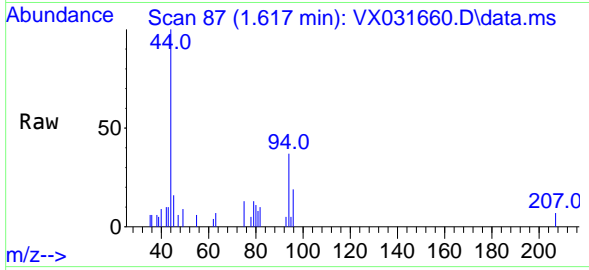




#5
 Bromomethane
 Concen: Below Cal
 RT: 1.617 min Scan# 81
 Delta R.T. 0.006 min
 Lab File: VX031660.D
 Acq: 26 Sep 2022 19:46

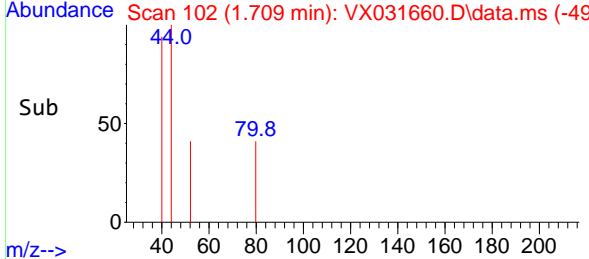
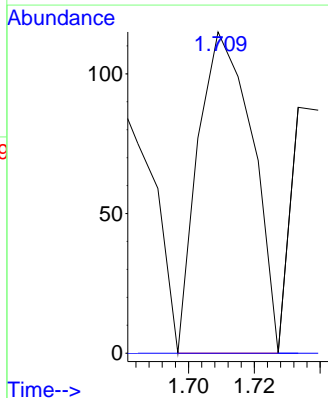
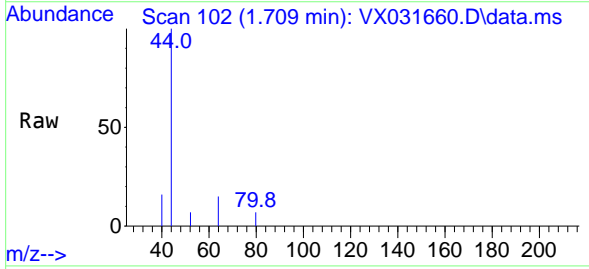
Instrument : MSVOA_X
 ClientSampleId : SB-1DL

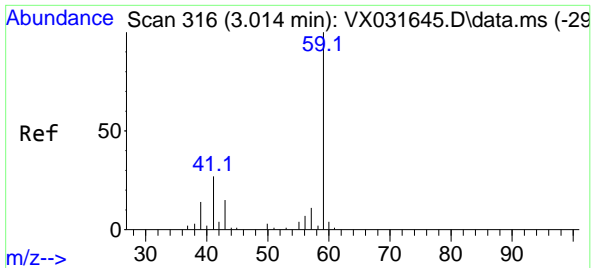
Tgt Ion: 94 Resp: 554
 Ion Ratio Lower Upper
 94 100
 96 50.9 74.4 111.6#



#6
 Chloroethane
 Concen: Below Cal
 RT: 1.709 min Scan# 102
 Delta R.T. 0.024 min
 Lab File: VX031660.D
 Acq: 26 Sep 2022 19:46

Tgt Ion: 64 Resp: 132
 Ion Ratio Lower Upper
 64 100
 66 0.0 25.0 37.4#

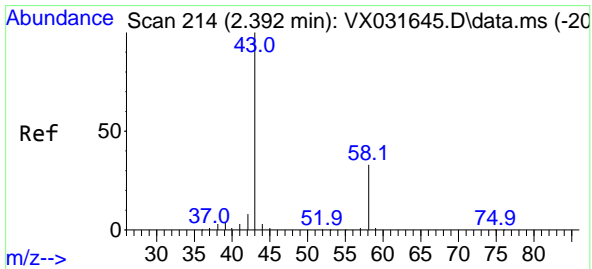
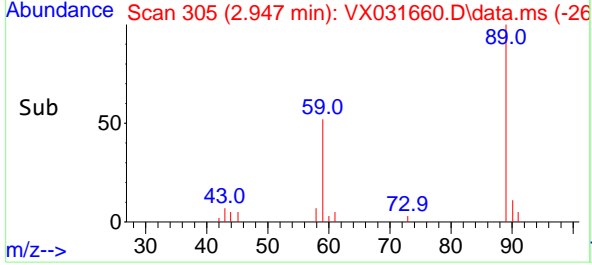
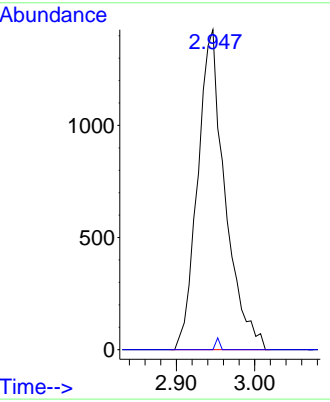
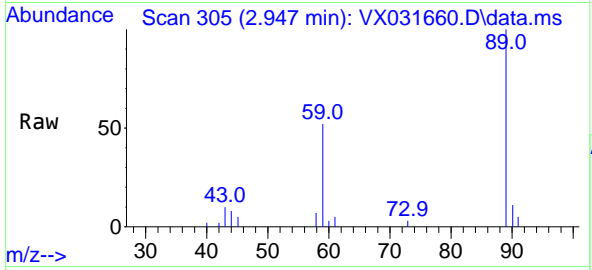




#11
 Tert butyl alcohol
 Concen: 2.330 ug/l
 RT: 2.947 min Scan# 305
 Delta R.T. -0.042 min
 Lab File: VX031660.D
 Acq: 26 Sep 2022 19:46

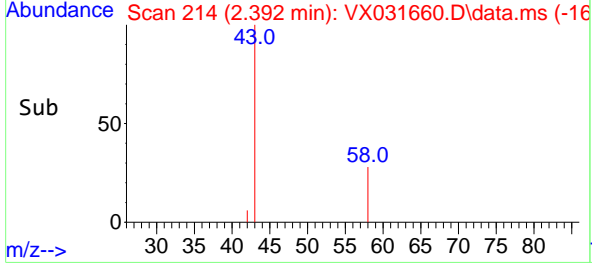
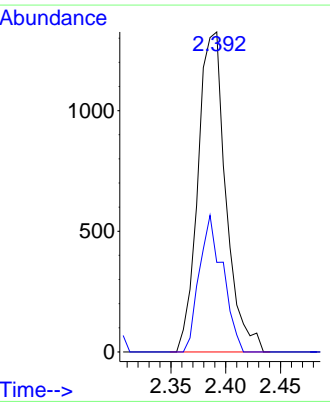
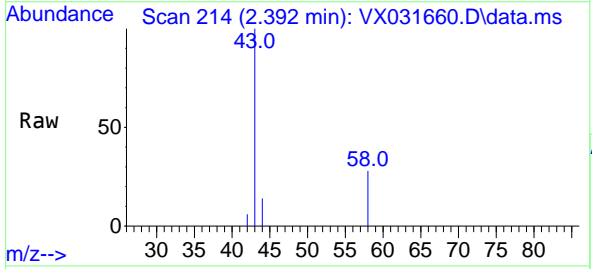
Instrument : MSVOA_X
 ClientSampleId : SB-1DL

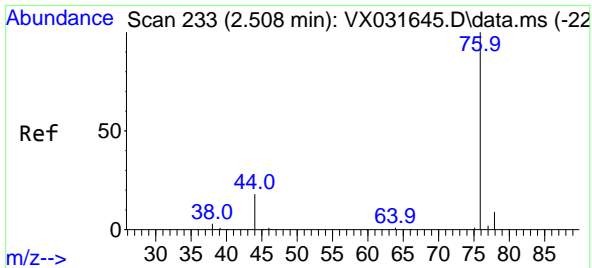
Tgt Ion: 59 Resp: 3465
 Ion Ratio Lower Upper
 59 100
 57 0.5 8.2 12.2#



#16
 Acetone
 Concen: Below Cal
 RT: 2.392 min Scan# 214
 Delta R.T. 0.006 min
 Lab File: VX031660.D
 Acq: 26 Sep 2022 19:46

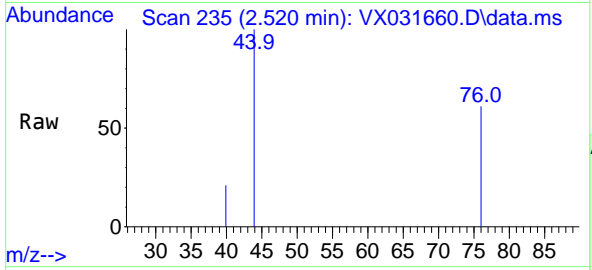
Tgt Ion: 43 Resp: 2351
 Ion Ratio Lower Upper
 43 100
 58 28.0 23.8 35.8



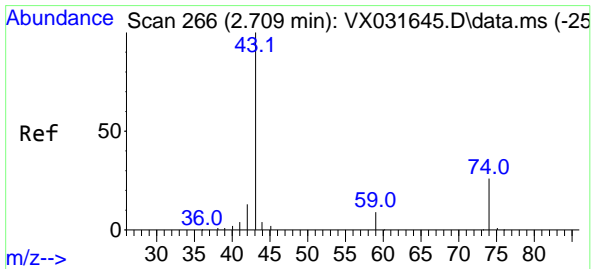
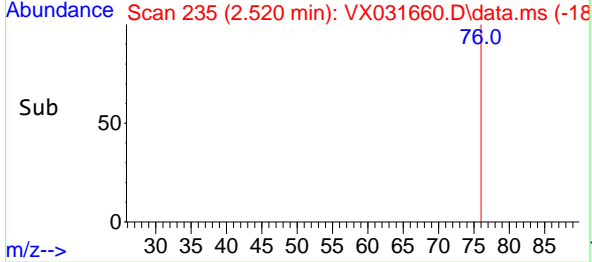
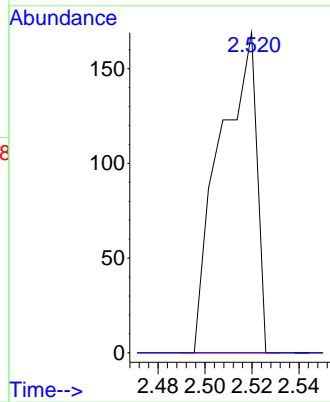


#17
 Carbon Disulfide
 Concen: Below Cal
 RT: 2.520 min Scan# 211
 Delta R.T. 0.006 min
 Lab File: VX031660.D
 Acq: 26 Sep 2022 19:46

Instrument : MSVOA_X
 Client SampleId : SB-1DL

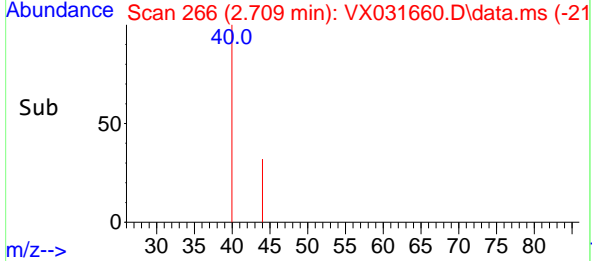
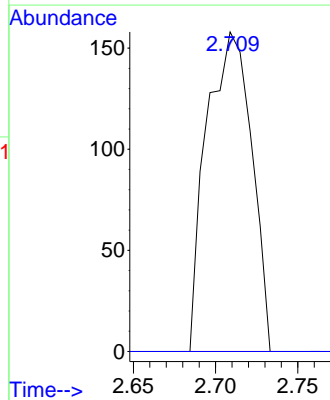
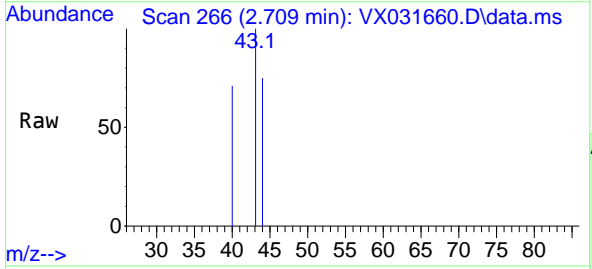


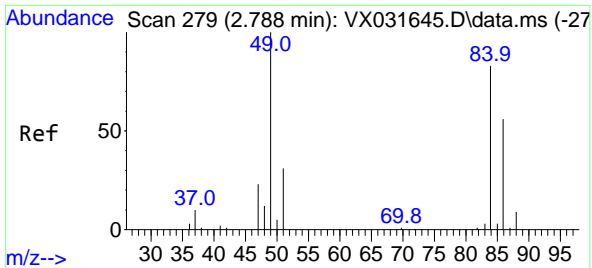
Tgt Ion: 76 Resp: 184
 Ion Ratio Lower Upper
 76 100
 78 0.0 7.2 10.8#



#18
 Methyl Acetate
 Concen: 0.386 ug/l
 RT: 2.709 min Scan# 266
 Delta R.T. -0.000 min
 Lab File: VX031660.D
 Acq: 26 Sep 2022 19:46

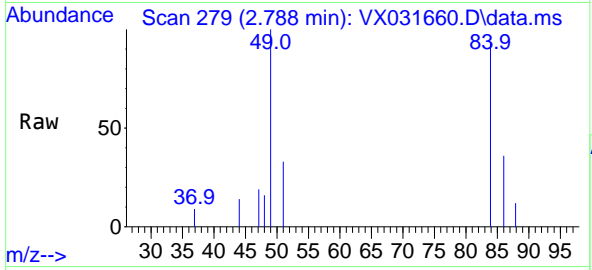
Tgt Ion: 43 Resp: 301
 Ion Ratio Lower Upper
 43 100
 74 0.0 18.6 27.8#





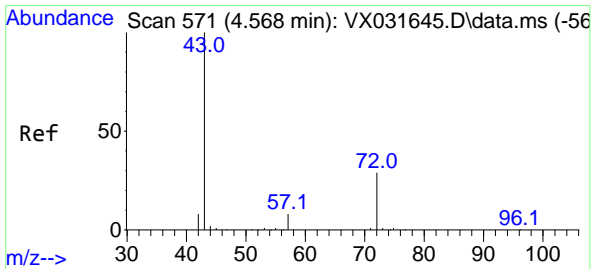
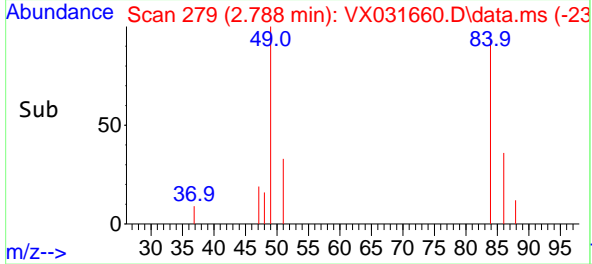
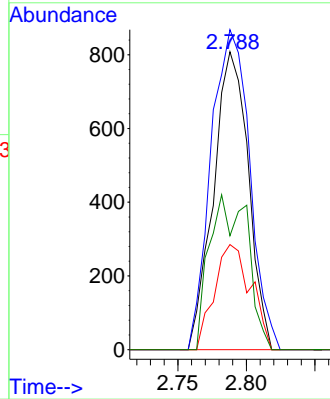
#20
 Methylene Chloride
 Concen: 0.948 ug/l
 RT: 2.788 min Scan# 21
 Delta R.T. 0.000 min
 Lab File: VX031660.D
 Acq: 26 Sep 2022 19:46

Instrument :
 MSVOA_X
 ClientSampleId :
 SB-1DL



Tgt Ion: 84 Resp: 1433

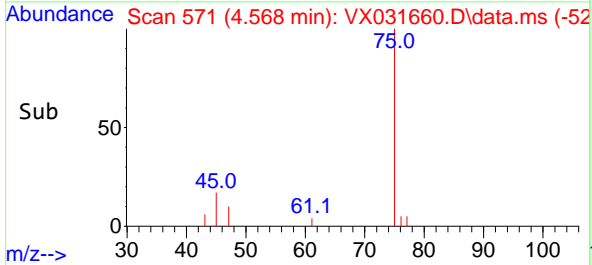
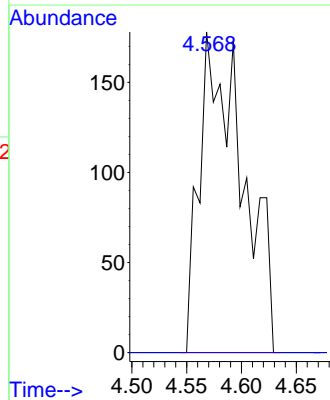
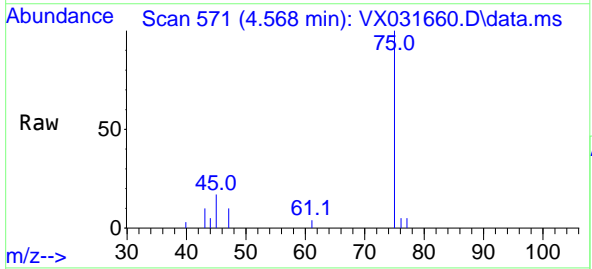
Ion	Ratio	Lower	Upper
84	100		
49	107.4	105.9	158.9
51	35.3	32.2	48.2
86	38.2	50.8	76.2#

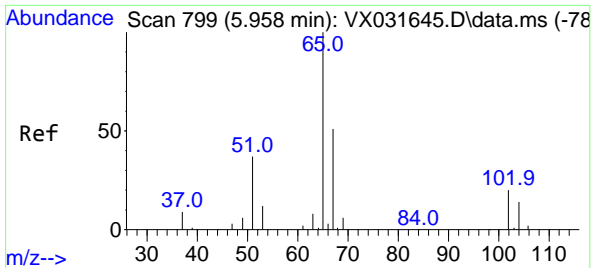


#25
 2-Butanone
 Concen: 1.174 ug/l
 RT: 4.568 min Scan# 571
 Delta R.T. 0.006 min
 Lab File: VX031660.D
 Acq: 26 Sep 2022 19:46

Tgt Ion: 43 Resp: 487

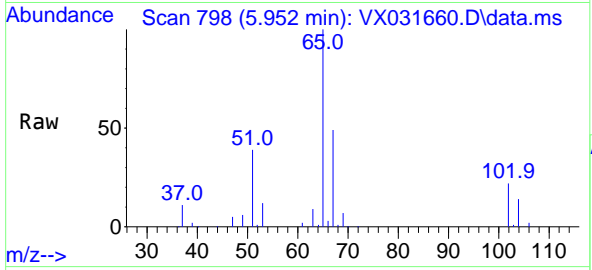
Ion	Ratio	Lower	Upper
43	100		
72	0.0	21.1	31.7#



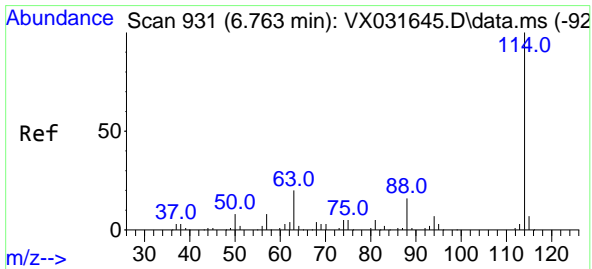
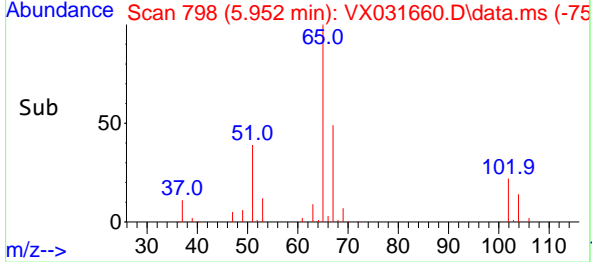
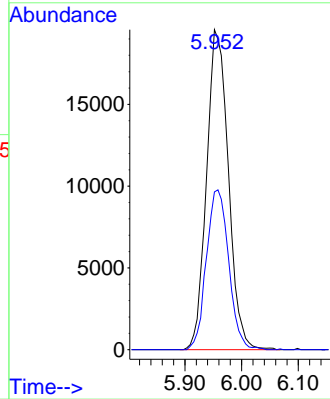


#33
 1,2-Dichloroethane-d4
 Concen: 60.166 ug/l
 RT: 5.952 min Scan# 799
 Delta R.T. -0.006 min
 Lab File: VX031660.D
 Acq: 26 Sep 2022 19:46

Instrument : MSVOA_X
 ClientSampleId : SB-1DL

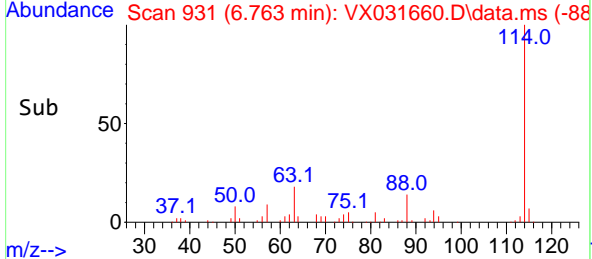
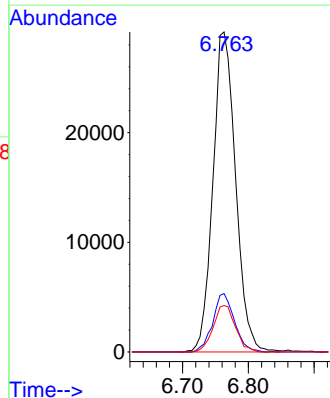
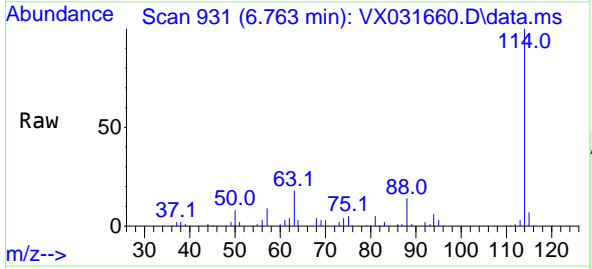


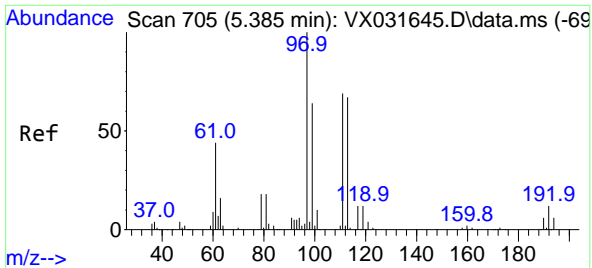
Tgt Ion: 65 Resp: 52269
 Ion Ratio Lower Upper
 65 100
 67 51.2 0.0 102.4



#34
 1,4-Difluorobenzene
 Concen: 50.000 ug/l
 RT: 6.763 min Scan# 931
 Delta R.T. -0.000 min
 Lab File: VX031660.D
 Acq: 26 Sep 2022 19:46

Tgt Ion: 114 Resp: 70032
 Ion Ratio Lower Upper
 114 100
 63 18.3 0.0 42.6
 88 14.5 0.0 33.0



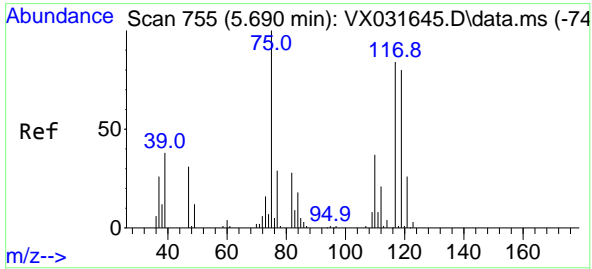
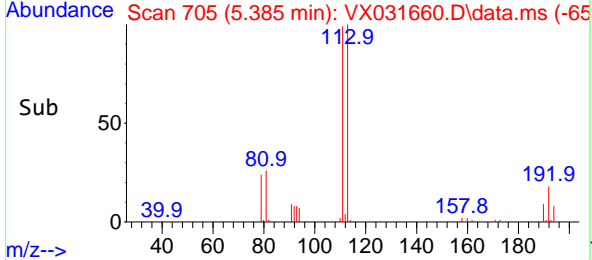
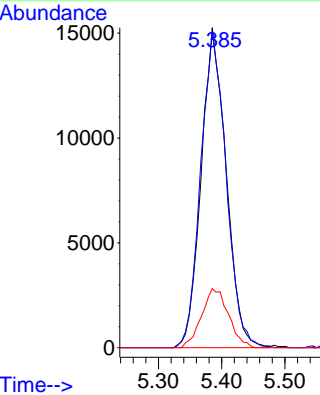
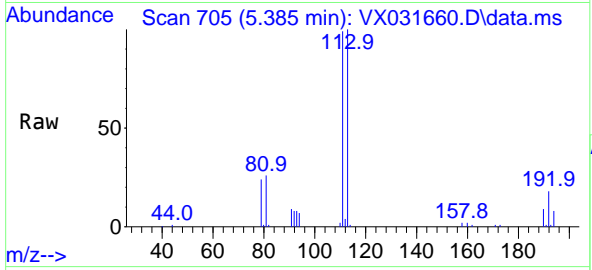


#35
 Dibromofluoromethane
 Concen: 50.024 ug/l
 RT: 5.385 min Scan# 705
 Delta R.T. -0.006 min
 Lab File: VX031660.D
 Acq: 26 Sep 2022 19:46

Instrument : MSVOA_X
 ClientSampleId : SB-1DL

Tgt Ion:113 Resp: 41742

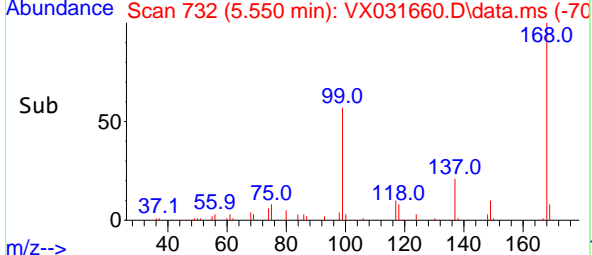
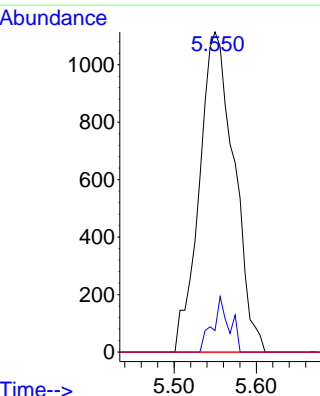
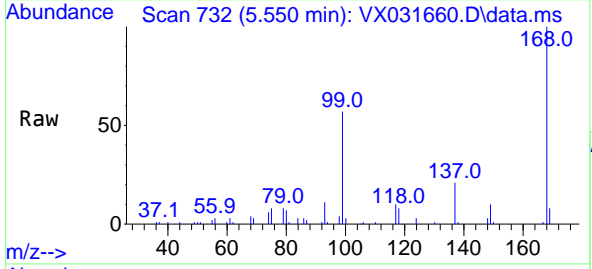
Ion	Ratio	Lower	Upper
113	100		
111	100.8	82.4	123.6
192	19.9	14.1	21.1

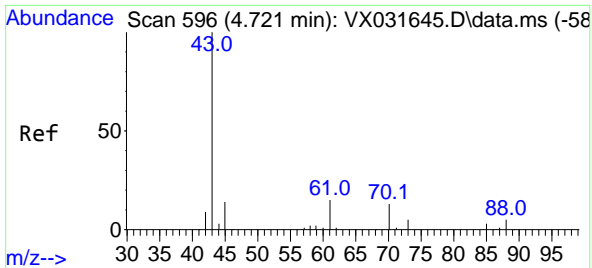


#36
 1,1-Dichloropropene
 Concen: 3.419 ug/l
 RT: 5.550 min Scan# 732
 Delta R.T. -0.140 min
 Lab File: VX031660.D
 Acq: 26 Sep 2022 19:46

Tgt Ion: 75 Resp: 3276

Ion	Ratio	Lower	Upper
75	100		
110	8.3	17.5	52.5#
77	0.0	24.9	37.3#



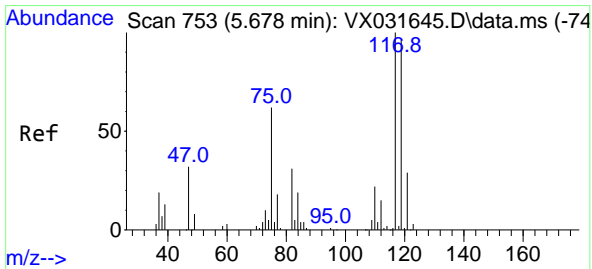
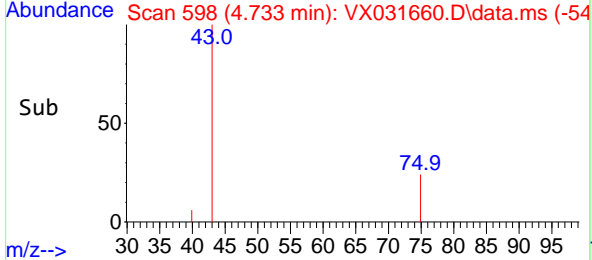
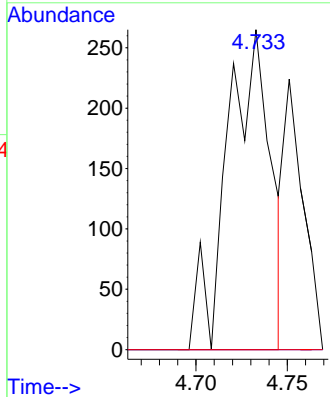
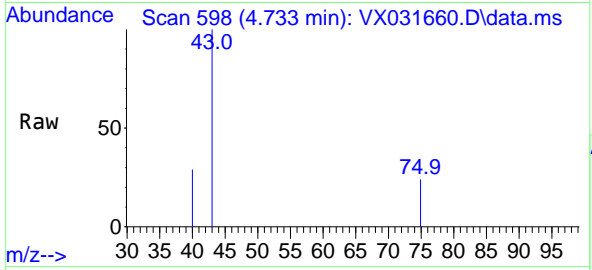


#37
 Ethyl Acetate
 Concen: 0.456 ug/l
 RT: 4.733 min Scan# 51
 Delta R.T. 0.012 min
 Lab File: VX031660.D
 Acq: 26 Sep 2022 19:46

Instrument : MSVOA_X
 ClientSampleId : SB-1DL

Tgt Ion: 43 Resp: 441

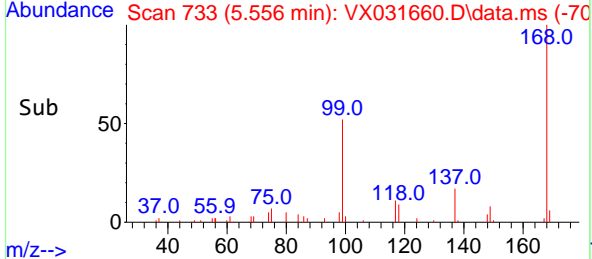
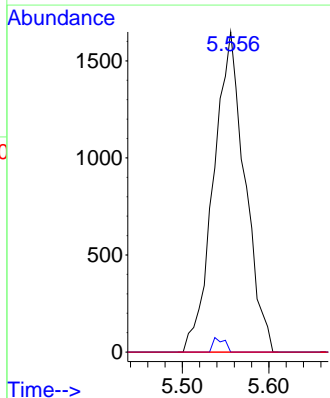
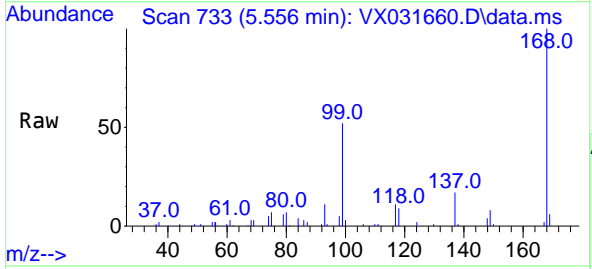
Ion	Ratio	Lower	Upper
43	100		
61	0.0	11.1	16.7#
70	0.0	8.6	13.0#

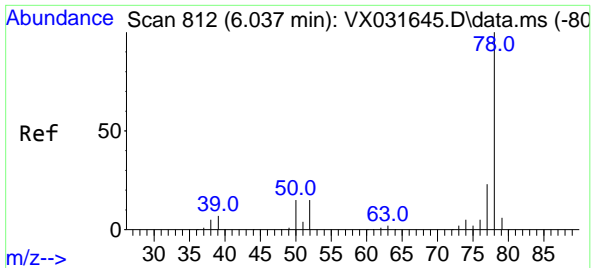


#38
 Carbon Tetrachloride
 Concen: 3.830 ug/l
 RT: 5.556 min Scan# 733
 Delta R.T. -0.122 min
 Lab File: VX031660.D
 Acq: 26 Sep 2022 19:46

Tgt Ion: 117 Resp: 4136

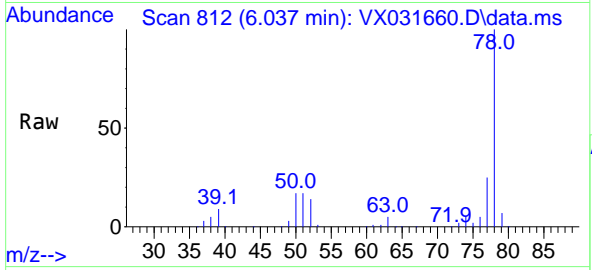
Ion	Ratio	Lower	Upper
117	100		
119	0.0	74.6	112.0#
121	0.0	25.3	37.9#



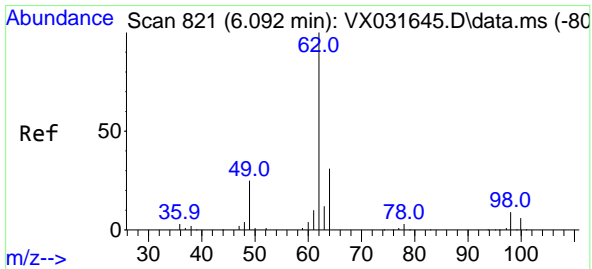
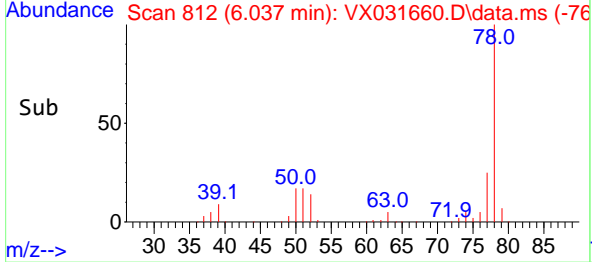
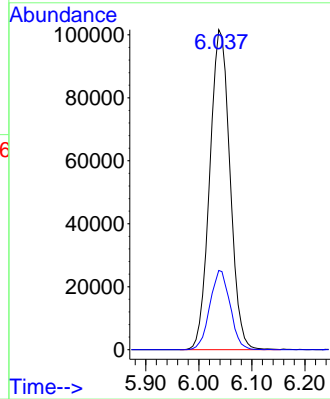


#40
Benzene
Concen: 91.628 ug/l
RT: 6.037 min Scan# 812
Delta R.T. -0.007 min
Lab File: VX031660.D
Acq: 26 Sep 2022 19:46

Instrument : MSVOA_X
ClientSampleId : SB-1DL

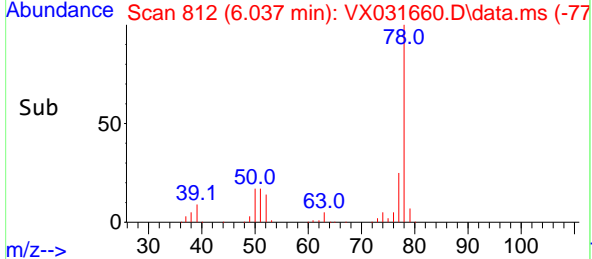
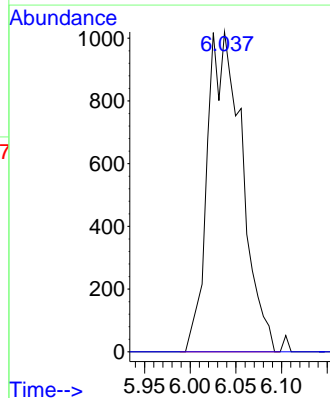
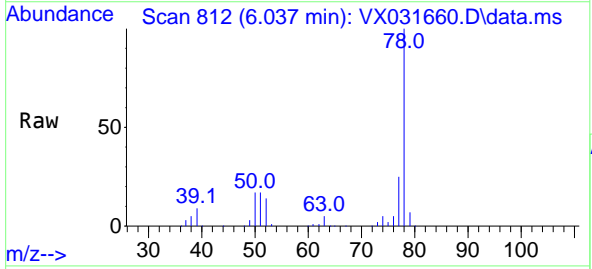


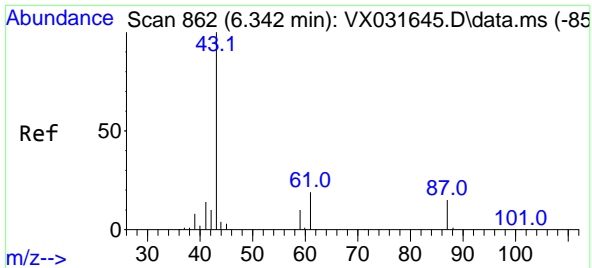
Tgt Ion: 78 Resp: 269685
Ion Ratio Lower Upper
78 100
77 24.8 18.7 28.1



#42
1,2-Dichloroethane
Concen: 2.364 ug/l
RT: 6.037 min Scan# 812
Delta R.T. -0.055 min
Lab File: VX031660.D
Acq: 26 Sep 2022 19:46

Tgt Ion: 62 Resp: 2691
Ion Ratio Lower Upper
62 100
98 0.0 0.0 17.8



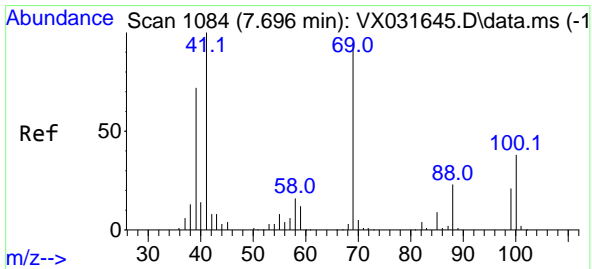
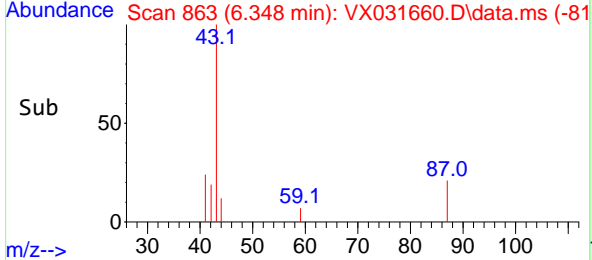
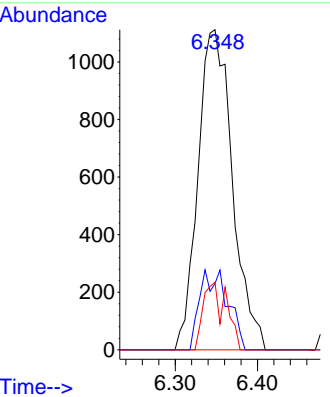
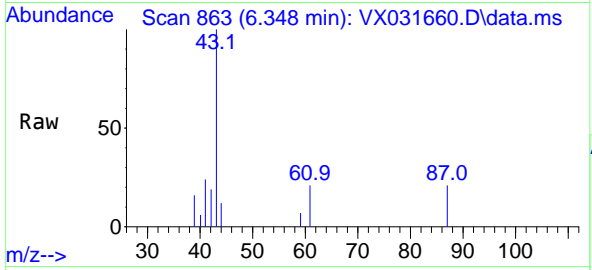


#43
 Isopropyl Acetate
 Concen: 2.122 ug/l
 RT: 6.348 min Scan# 80
 Delta R.T. 0.006 min
 Lab File: VX031660.D
 Acq: 26 Sep 2022 19:46

Instrument : MSVOA_X
 ClientSampleId : SB-1DL

Tgt Ion: 43 Resp: 3228

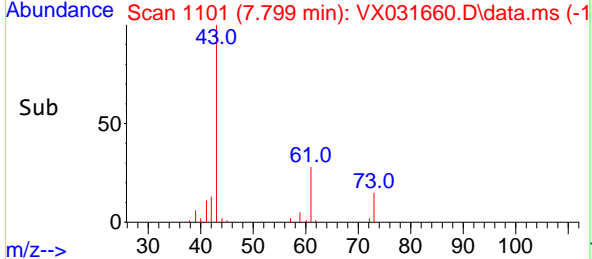
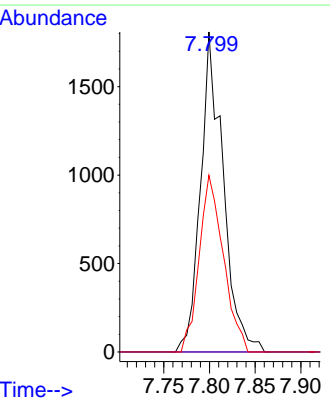
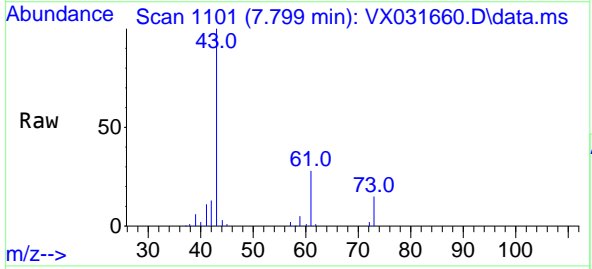
Ion	Ratio	Lower	Upper
43	100		
61	20.3	15.3	22.9
87	14.1	10.6	15.8

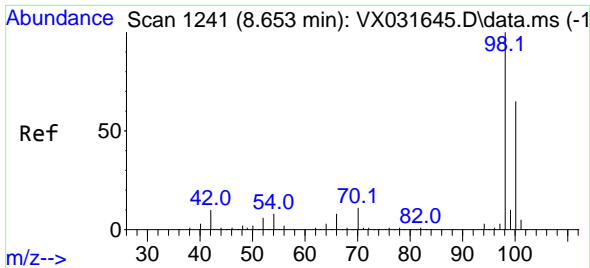


#48
 Methyl methacrylate
 Concen: 4.651 ug/l
 RT: 7.799 min Scan# 1101
 Delta R.T. 0.103 min
 Lab File: VX031660.D
 Acq: 26 Sep 2022 19:46

Tgt Ion: 41 Resp: 3112

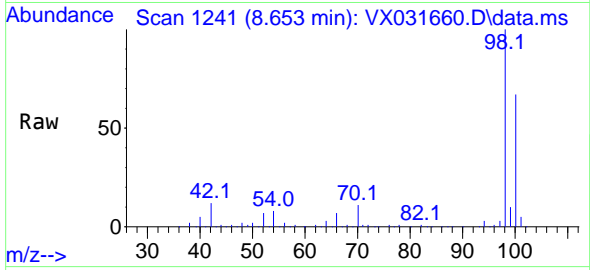
Ion	Ratio	Lower	Upper
41	100		
69	0.0	64.6	96.8#
39	59.1	51.4	77.0



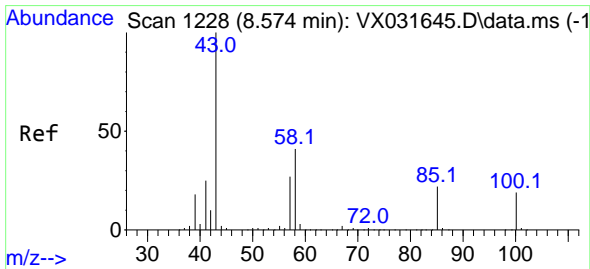
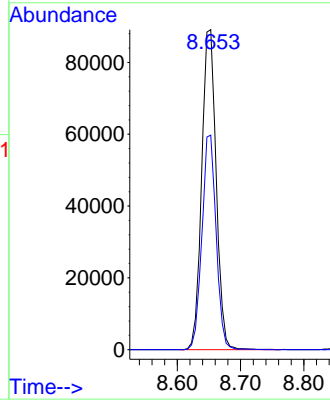
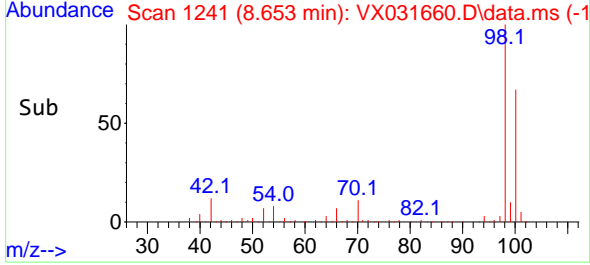


#50
 Toluene-d8
 Concen: 46.912 ug/l
 RT: 8.653 min Scan# 11
 Delta R.T. -0.000 min
 Lab File: VX031660.D
 Acq: 26 Sep 2022 19:46

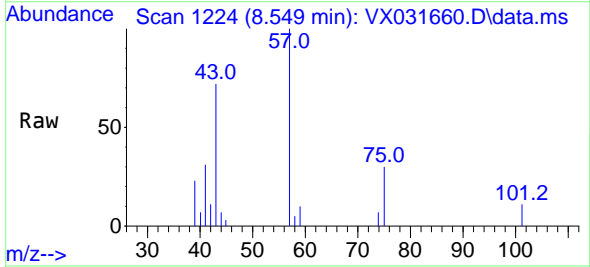
Instrument : MSVOA_X
 ClientSampleId : SB-1DL



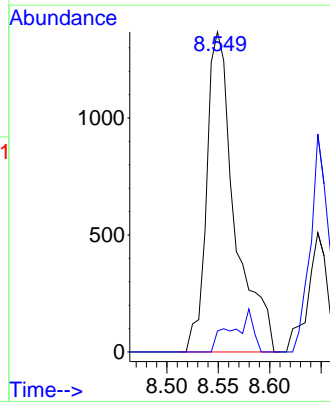
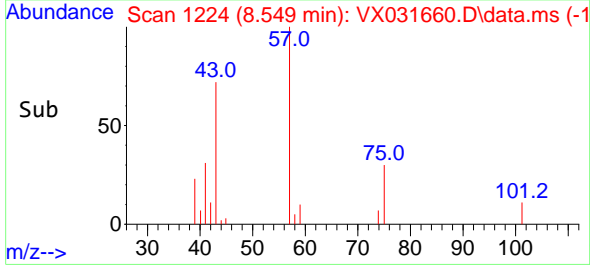
Tgt Ion: 98 Resp: 141919
 Ion Ratio Lower Upper
 98 100
 100 65.8 52.5 78.7

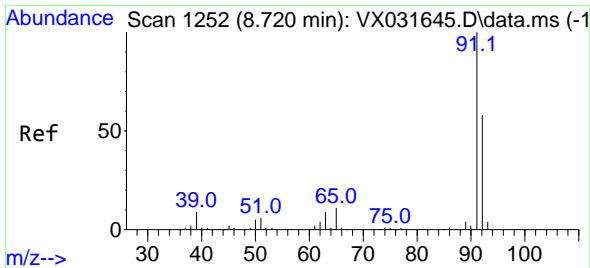


#51
 4-Methyl-2-Pentanone
 Concen: 2.699 ug/l
 RT: 8.549 min Scan# 1224
 Delta R.T. -0.031 min
 Lab File: VX031660.D
 Acq: 26 Sep 2022 19:46



Tgt Ion: 43 Resp: 2599
 Ion Ratio Lower Upper
 43 100
 58 3.9 30.6 46.0#

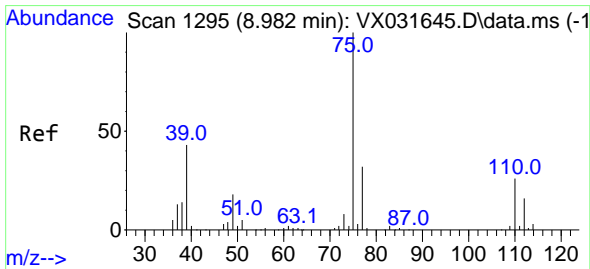
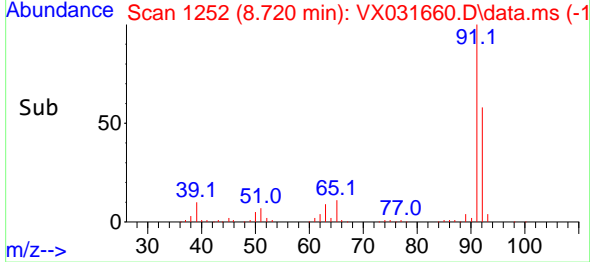
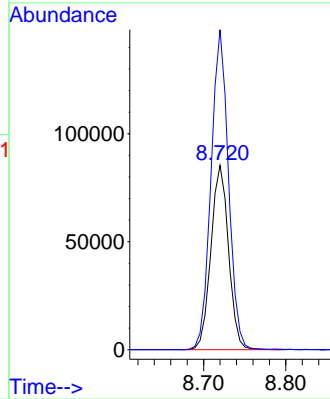
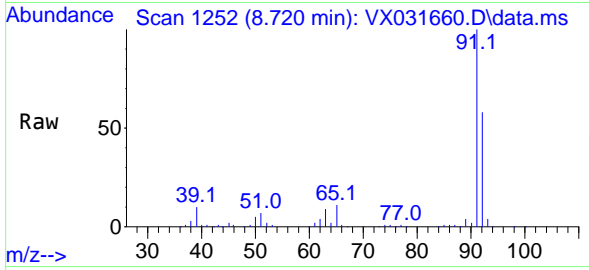




#52
 Toluene
 Concen: 64.674 ug/l
 RT: 8.720 min Scan# 1252
 Delta R.T. -0.000 min
 Lab File: VX031660.D
 Acq: 26 Sep 2022 19:46

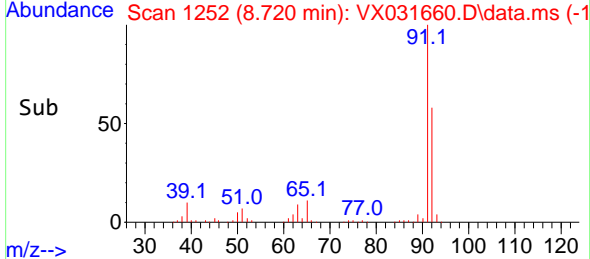
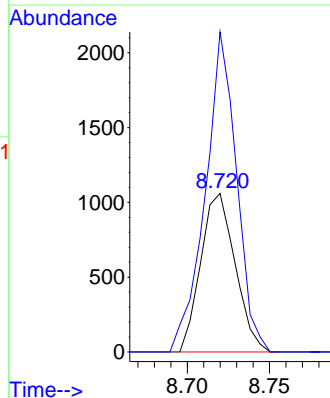
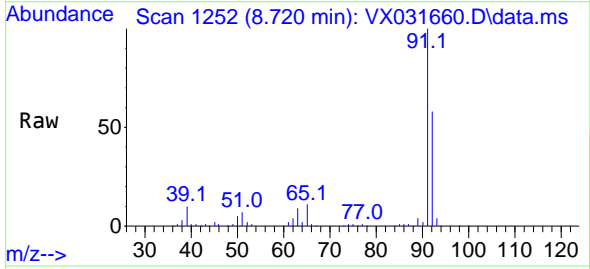
Instrument : MSVOA_X
 ClientSampleId : SB-1DL

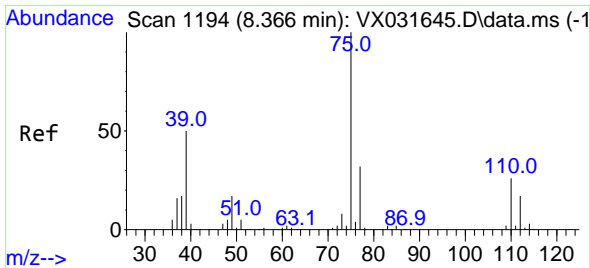
Tgt Ion: 92 Resp: 126884
 Ion Ratio Lower Upper
 92 100
 91 172.4 137.1 205.7



#53
 t-1,3-Dichloropropene
 Concen: 3.127 ug/l
 RT: 8.720 min Scan# 1252
 Delta R.T. -0.262 min
 Lab File: VX031660.D
 Acq: 26 Sep 2022 19:46

Tgt Ion: 75 Resp: 1544
 Ion Ratio Lower Upper
 75 100
 77 201.8 24.8 37.2#



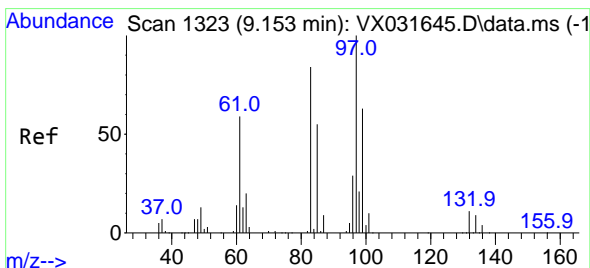
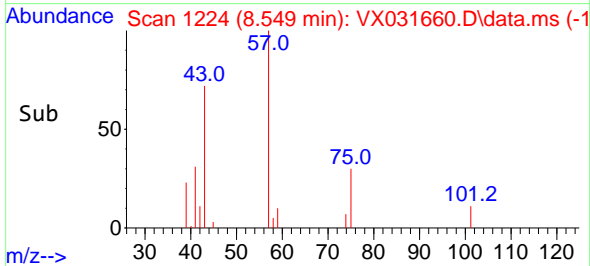
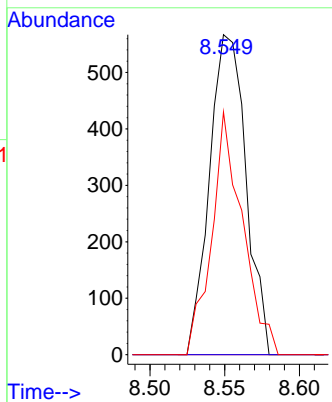
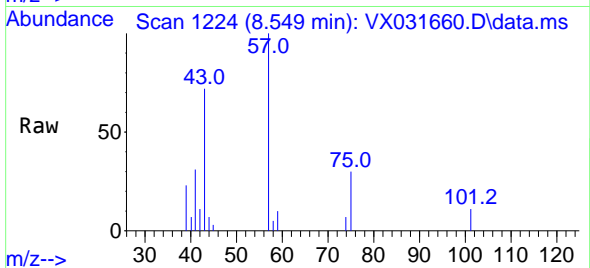


#54
 cis-1,3-Dichloropropene
 Concen: 0.895 ug/l
 RT: 8.549 min Scan# 1110
 Delta R.T. 0.183 min
 Lab File: VX031660.D
 Acq: 26 Sep 2022 19:46

Instrument : MSVOA_X
 ClientSampleId : SB-1DL

Tgt Ion: 75 Resp: 963

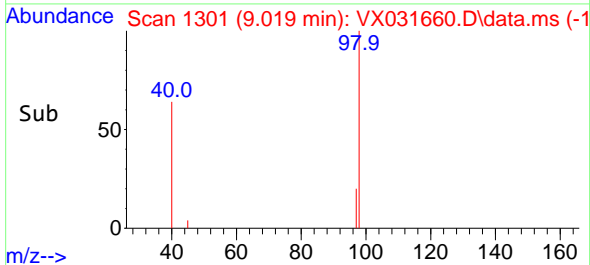
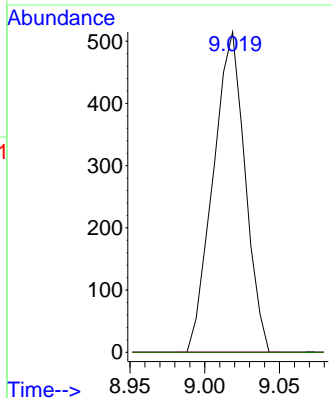
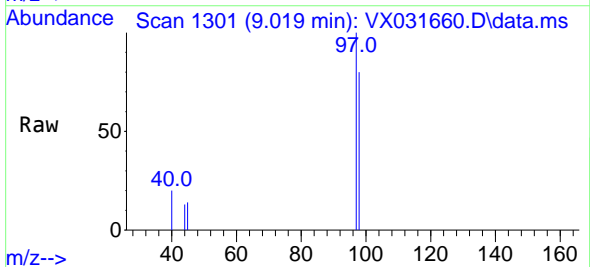
Ion	Ratio	Lower	Upper
75	100		
77	0.0	24.4	36.6#
39	75.8	43.7	65.5#

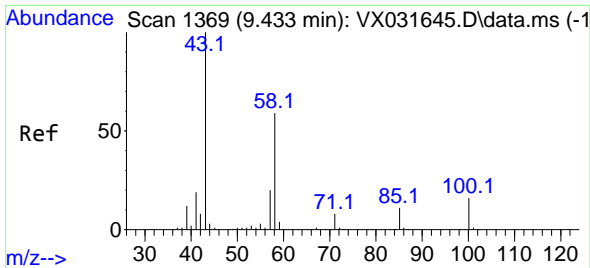


#55
 1,1,2-Trichloroethane
 Concen: 0.904 ug/l
 RT: 9.019 min Scan# 1301
 Delta R.T. -0.134 min
 Lab File: VX031660.D
 Acq: 26 Sep 2022 19:46

Tgt Ion: 97 Resp: 764

Ion	Ratio	Lower	Upper
97	100		
83	0.0	69.0	103.6#
85	0.0	44.1	66.1#
99	0.0	51.3	76.9#

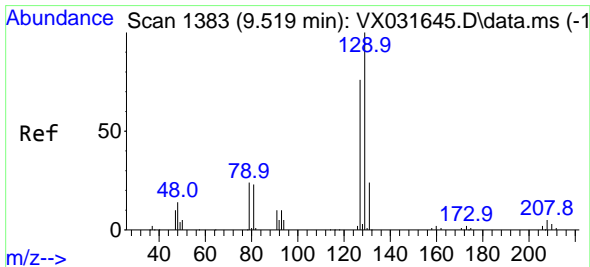
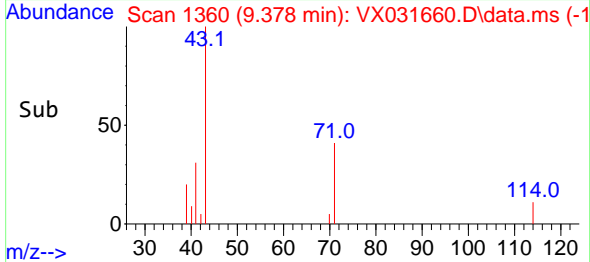
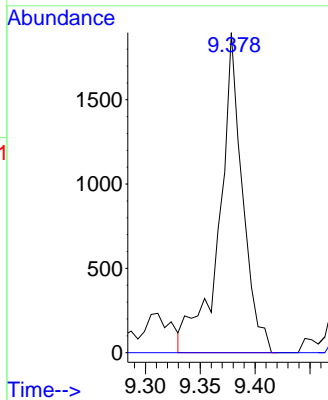
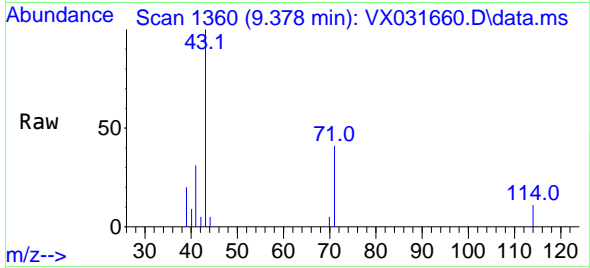




#59
 2-Hexanone
 Concen: 3.896 ug/l
 RT: 9.378 min Scan# 11
 Delta R.T. -0.055 min
 Lab File: VX031660.D
 Acq: 26 Sep 2022 19:46

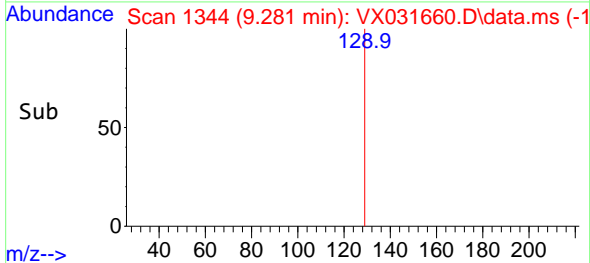
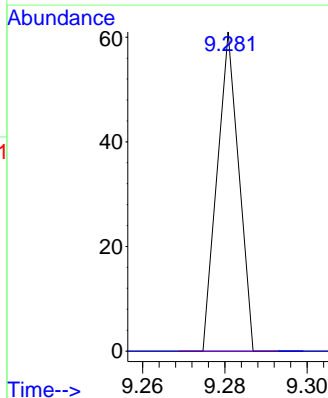
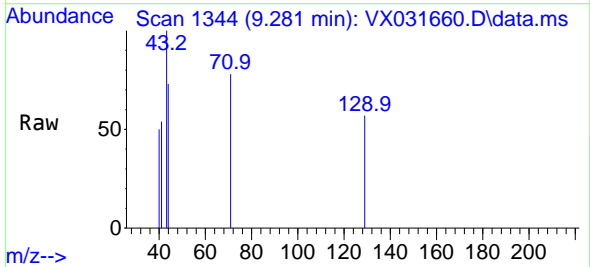
Instrument : MSVOA_X
 ClientSampleId : SB-1DL

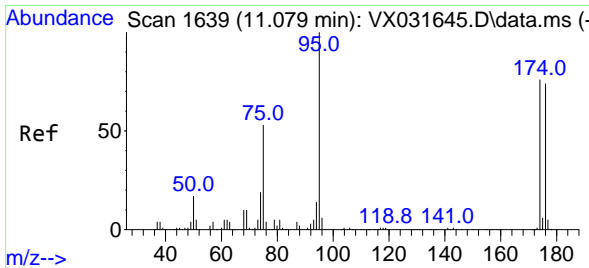
Tgt Ion: 43 Resp: 2799
 Ion Ratio Lower Upper
 43 100
 58 0.0 26.7 80.0#



#60
 Dibromochloromethane
 Concen: 1.562 ug/l
 RT: 9.281 min Scan# 1344
 Delta R.T. -0.244 min
 Lab File: VX031660.D
 Acq: 26 Sep 2022 19:46

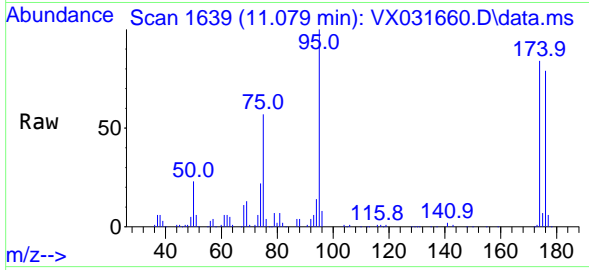
Tgt Ion: 129 Resp: 22
 Ion Ratio Lower Upper
 129 100
 127 0.0 38.7 116.1#



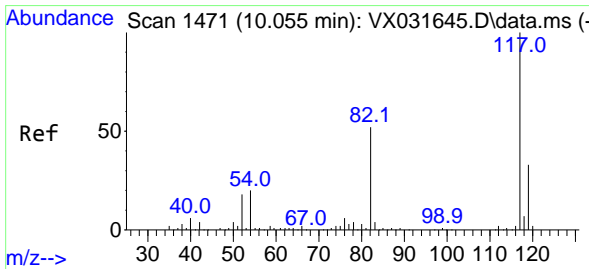
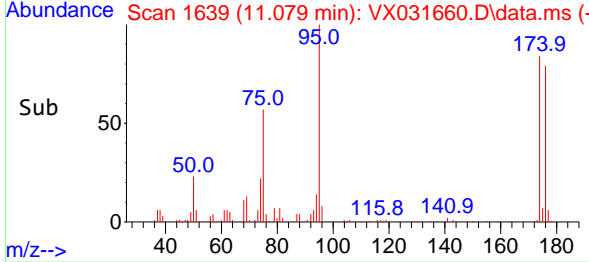
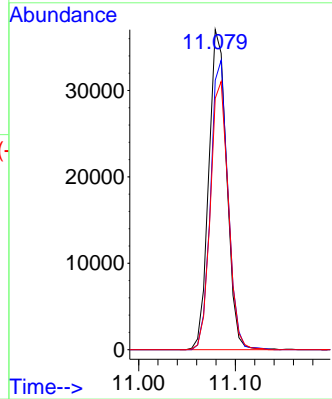


#62
 4-Bromofluorobenzene
 Concen: 43.095 ug/l
 RT: 11.079 min Scan# 1639
 Delta R.T. 0.000 min
 Lab File: VX031660.D
 Acq: 26 Sep 2022 19:46

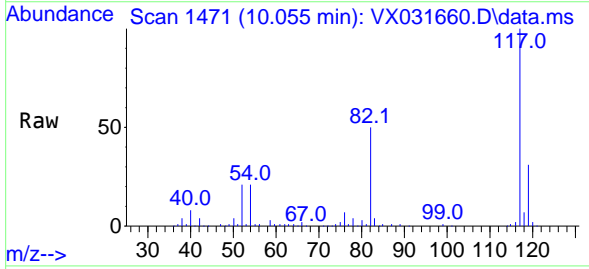
Instrument : MSVOA_X
 ClientSampleId : SB-1DL



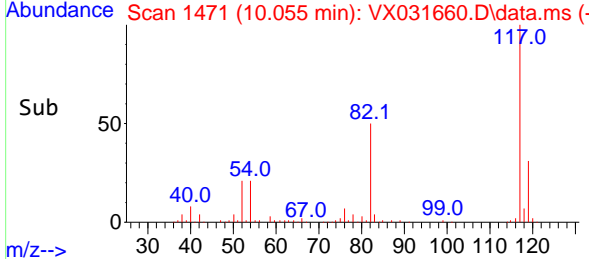
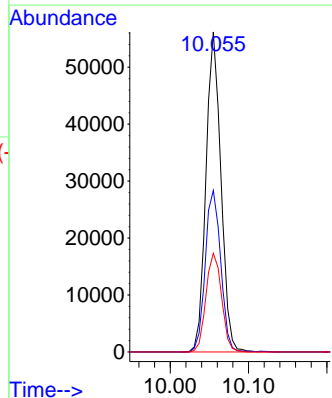
Tgt Ion: 95 Resp: 47784
 Ion Ratio Lower Upper
 95 100
 174 87.9 0.0 153.2
 176 83.8 0.0 144.0

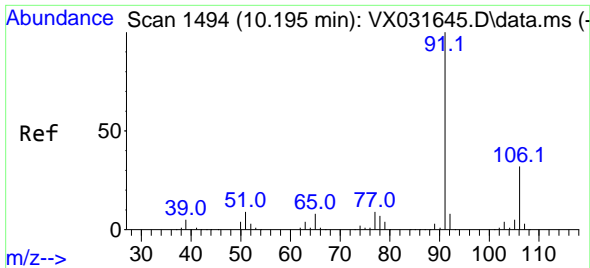


#63
 Chlorobenzene-d5
 Concen: 50.000 ug/l
 RT: 10.055 min Scan# 1471
 Delta R.T. 0.000 min
 Lab File: VX031660.D
 Acq: 26 Sep 2022 19:46



Tgt Ion: 117 Resp: 74354
 Ion Ratio Lower Upper
 117 100
 82 50.5 46.8 70.2
 119 30.9 26.4 39.6

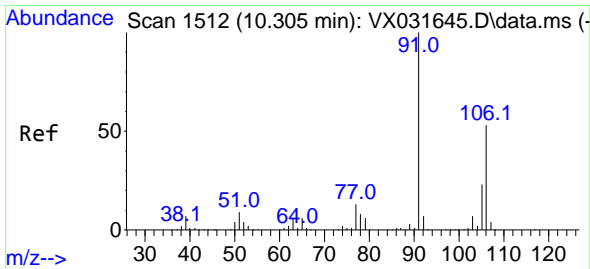
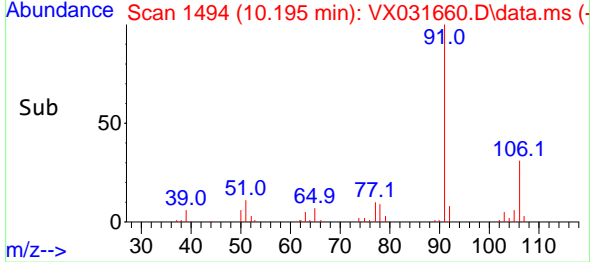
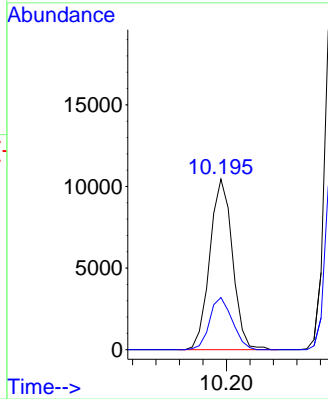
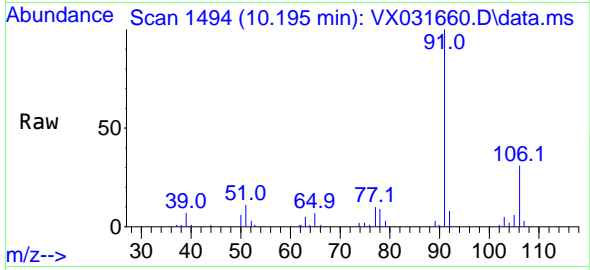




#67
 Ethyl Benzene
 Concen: 3.976 ug/l
 RT: 10.195 min Scan# 1494
 Delta R.T. 0.000 min
 Lab File: VX031660.D
 Acq: 26 Sep 2022 19:46

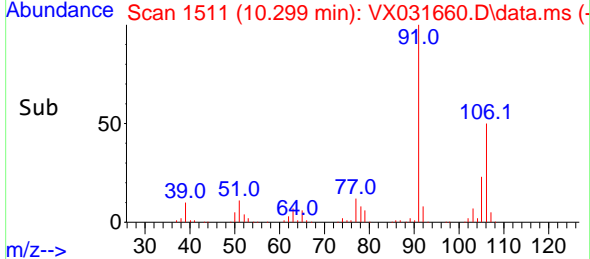
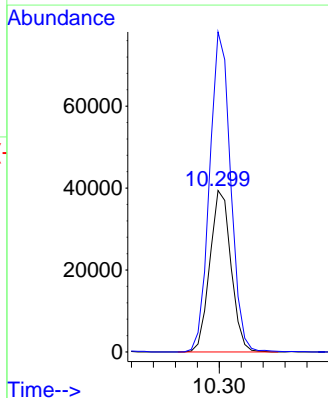
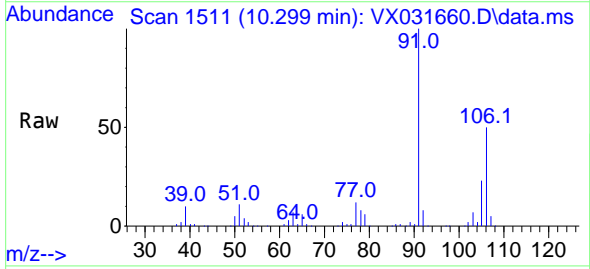
Instrument : MSVOA_X
 ClientSampleId : SB-1DL

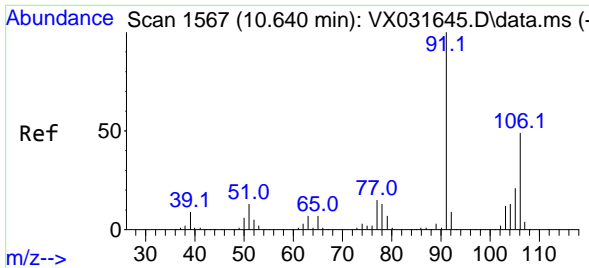
Tgt Ion: 91 Resp: 14009
 Ion Ratio Lower Upper
 91 100
 106 30.5 25.2 37.8



#68
 m/p-Xylenes
 Concen: 37.320 ug/l
 RT: 10.299 min Scan# 1511
 Delta R.T. -0.006 min
 Lab File: VX031660.D
 Acq: 26 Sep 2022 19:46

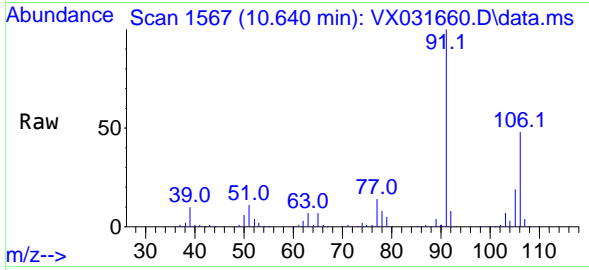
Tgt Ion: 106 Resp: 52839
 Ion Ratio Lower Upper
 106 100
 91 197.2 161.0 241.4



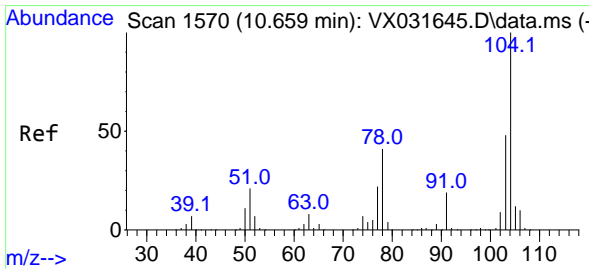
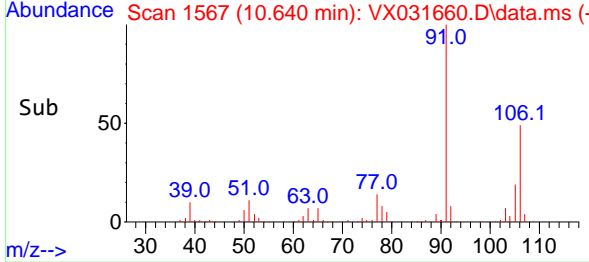
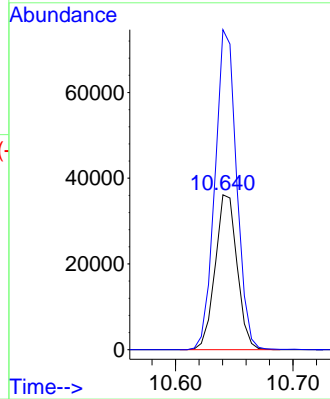


#69
 o-Xylene
 Concen: 33.885 ug/l
 RT: 10.640 min Scan# 11
 Delta R.T. -0.006 min
 Lab File: VX031660.D
 Acq: 26 Sep 2022 19:46

Instrument : MSVOA_X
 ClientSampleId : SB-1DL

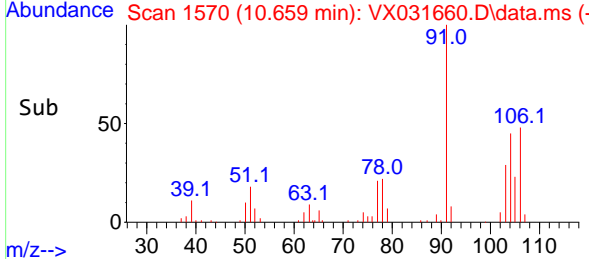
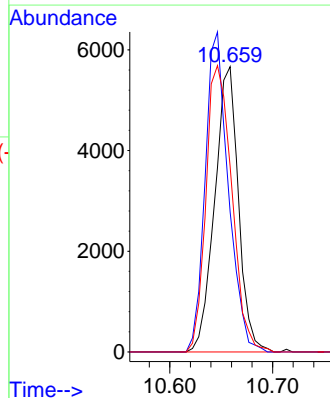
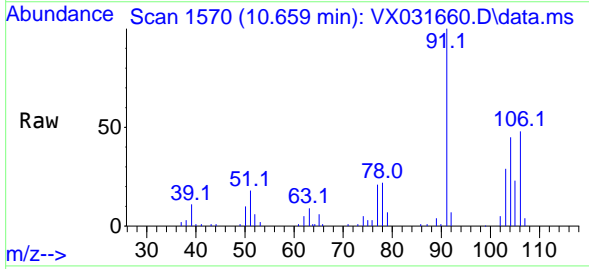


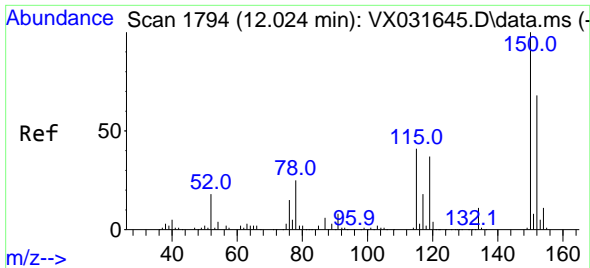
Tgt Ion:106 Resp: 46893
 Ion Ratio Lower Upper
 106 100
 91 203.9 107.2 321.6



#70
 Styrene
 Concen: 4.030 ug/l
 RT: 10.659 min Scan# 1570
 Delta R.T. -0.000 min
 Lab File: VX031660.D
 Acq: 26 Sep 2022 19:46

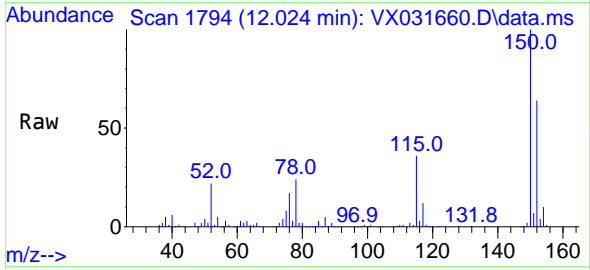
Tgt Ion:104 Resp: 9079
 Ion Ratio Lower Upper
 104 100
 78 109.7 41.4 62.2#
 103 109.5 43.8 65.8#



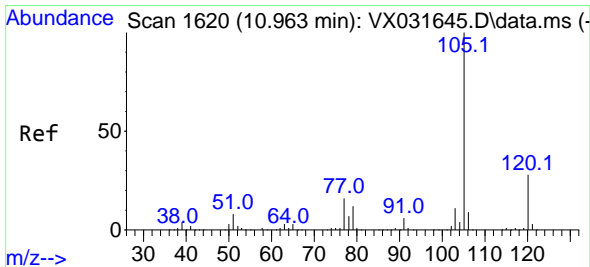
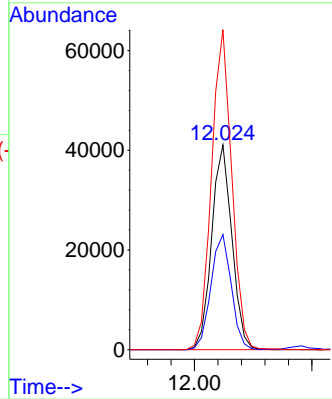
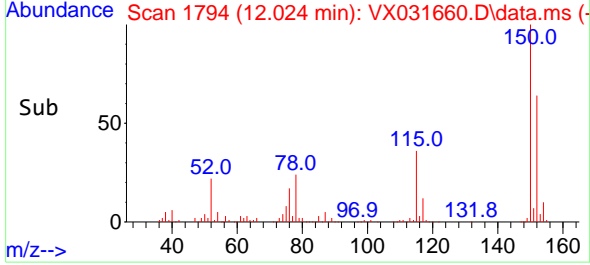


#72
 1,4-Dichlorobenzene-d4
 Concen: 50.000 ug/l
 RT: 12.024 min Scan# 11
 Delta R.T. 0.000 min
 Lab File: VX031660.D
 Acq: 26 Sep 2022 19:46

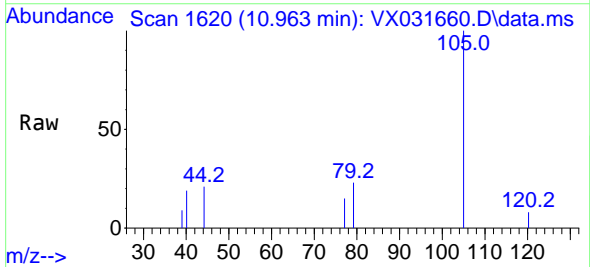
Instrument :
 MSVOA_X
 ClientSampleId :
 SB-1DL



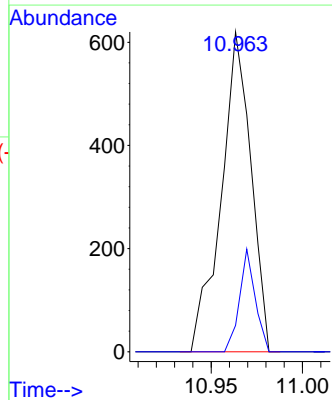
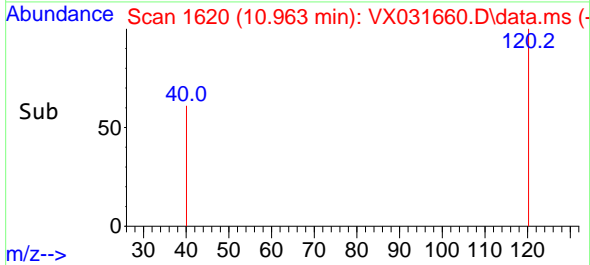
Tgt Ion:152 Resp: 49105
 Ion Ratio Lower Upper
 152 100
 115 56.7 43.4 130.1
 150 156.5 0.0 346.8

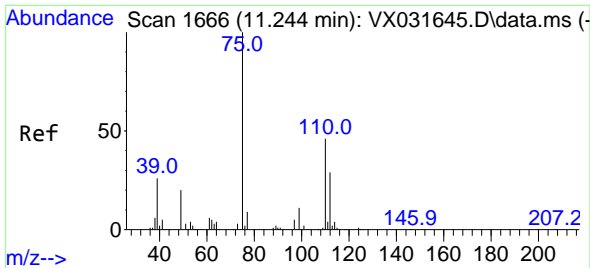


#73
 Isopropylbenzene
 Concen: 0.221 ug/l
 RT: 10.963 min Scan# 1620
 Delta R.T. 0.000 min
 Lab File: VX031660.D
 Acq: 26 Sep 2022 19:46



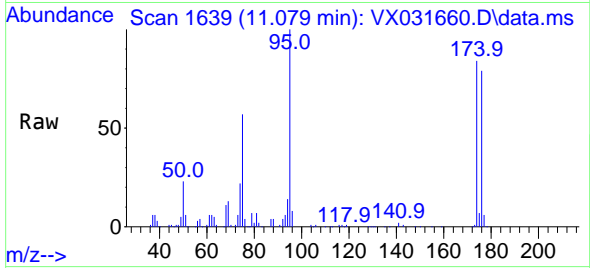
Tgt Ion:105 Resp: 703
 Ion Ratio Lower Upper
 105 100
 120 16.8 13.7 41.0



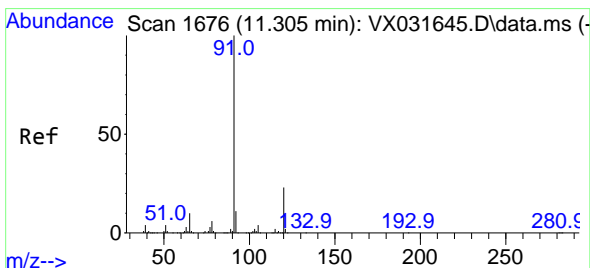
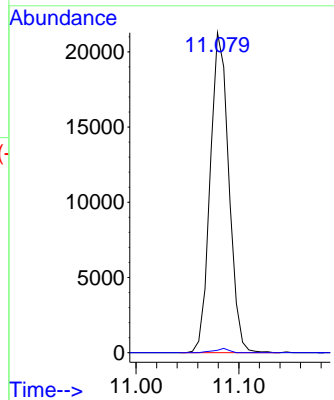
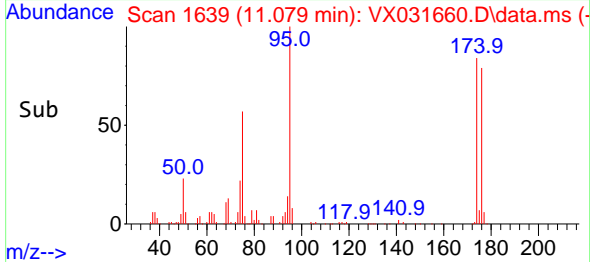


#76
 1,2,3-Trichloropropane
 Concen: 30.088 ug/l
 RT: 11.079 min Scan# 1639
 Delta R.T. -0.159 min
 Lab File: VX031660.D
 Acq: 26 Sep 2022 19:46

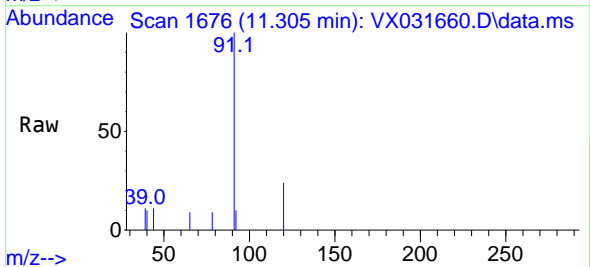
Instrument : MSVOA_X
 ClientSampleId : SB-1DL



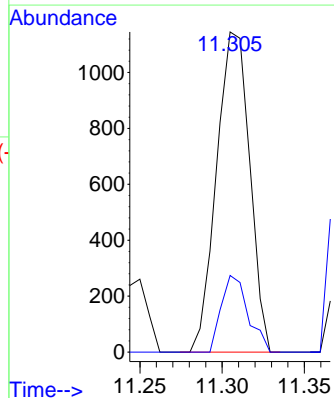
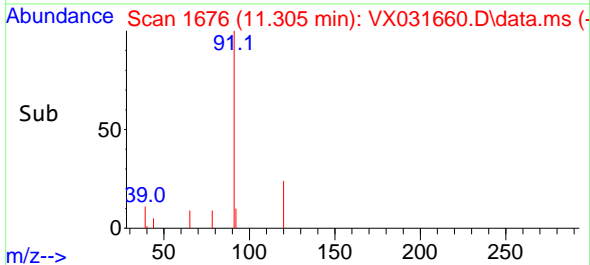
Tgt Ion: 75 Resp: 26785
 Ion Ratio Lower Upper
 75 100
 77 1.0 20.3 60.9#

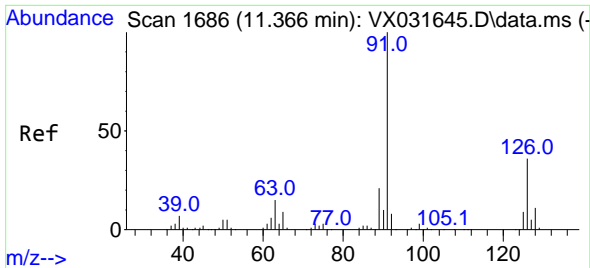


#78
 n-propylbenzene
 Concen: 0.454 ug/l
 RT: 11.305 min Scan# 1676
 Delta R.T. -0.000 min
 Lab File: VX031660.D
 Acq: 26 Sep 2022 19:46



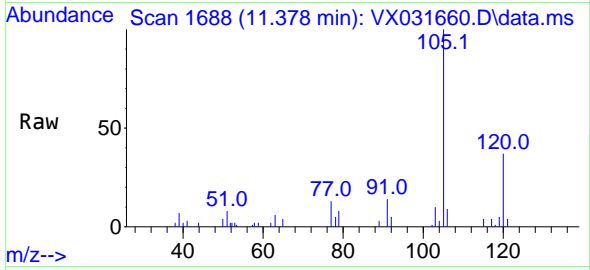
Tgt Ion: 91 Resp: 1605
 Ion Ratio Lower Upper
 91 100
 120 19.3 11.8 35.4



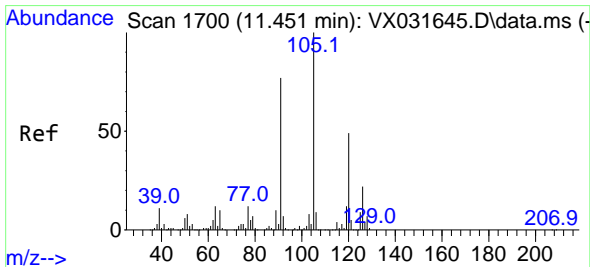
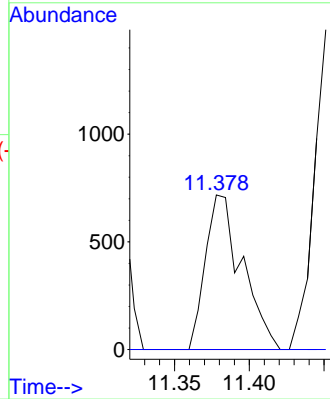
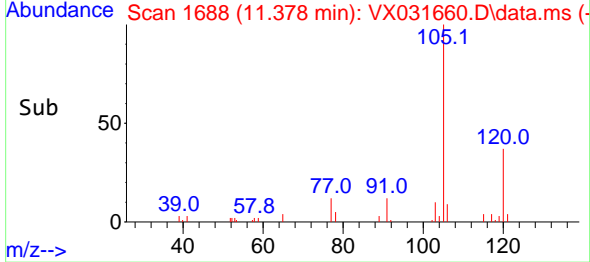


#79
 2-Chlorotoluene
 Concen: 0.562 ug/l
 RT: 11.378 min Scan# 11
 Delta R.T. 0.012 min
 Lab File: VX031660.D
 Acq: 26 Sep 2022 19:46

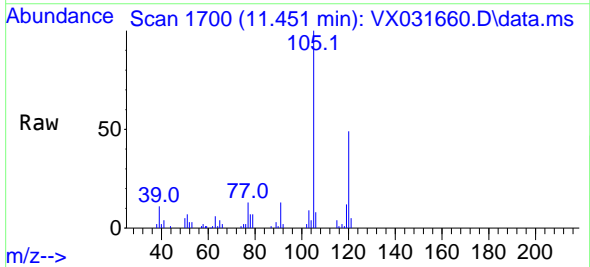
Instrument :
 MSVOA_X
 ClientSampleId :
 SB-1DL



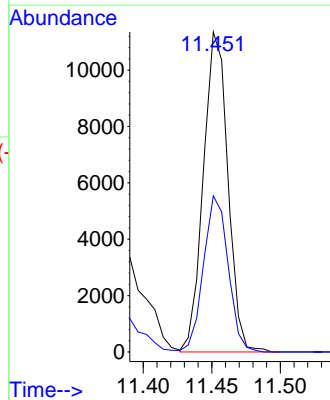
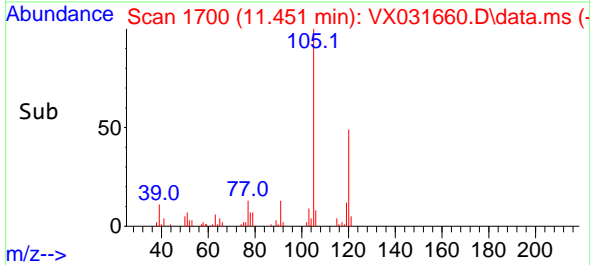
Tgt Ion: 91 Resp: 1226
 Ion Ratio Lower Upper
 91 100
 126 0.0 17.4 52.3#

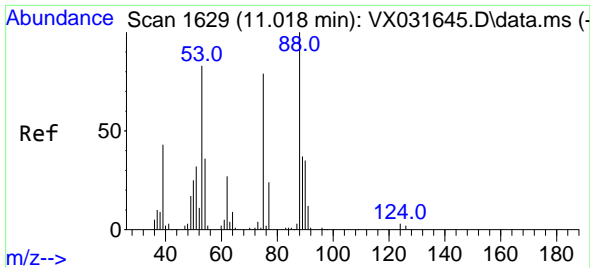


#80
 1,3,5-Trimethylbenzene
 Concen: 5.246 ug/l
 RT: 11.451 min Scan# 1700
 Delta R.T. 0.000 min
 Lab File: VX031660.D
 Acq: 26 Sep 2022 19:46



Tgt Ion: 105 Resp: 14121
 Ion Ratio Lower Upper
 105 100
 120 48.9 24.5 73.5

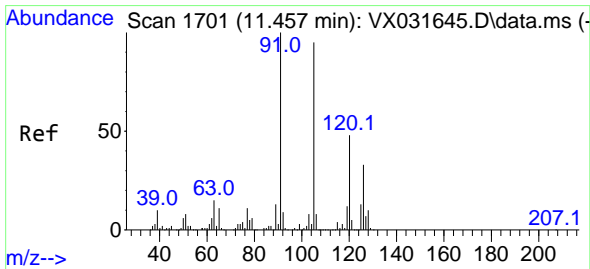
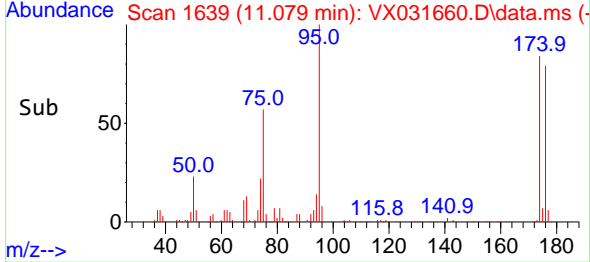
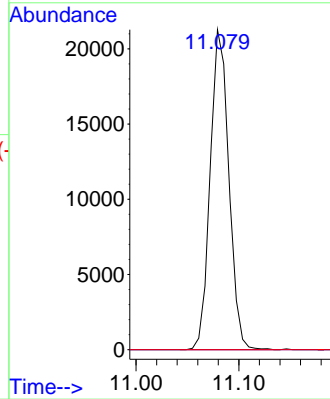
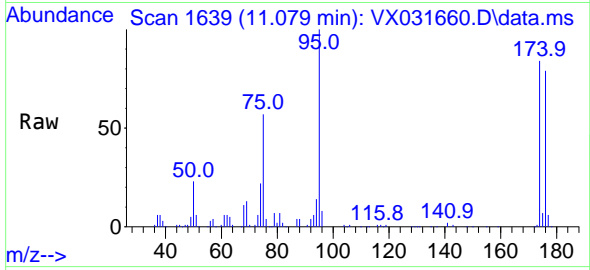




#81
 trans-1,4-Dichloro-2-butene
 Concen: 99.164 ug/l
 RT: 11.079 min Scan# 1100
 Delta R.T. 0.061 min
 Lab File: VX031660.D
 Acq: 26 Sep 2022 19:46

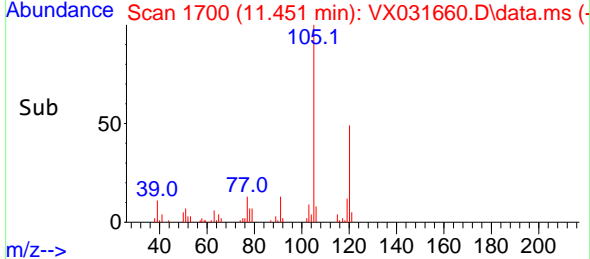
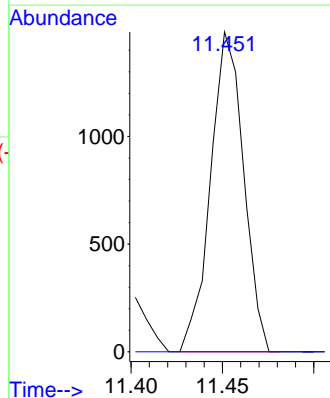
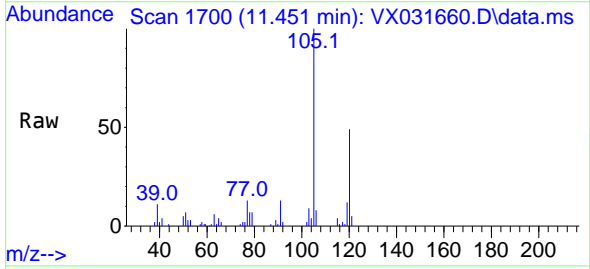
Instrument : MSVOA_X
 ClientSampleId : SB-1DL

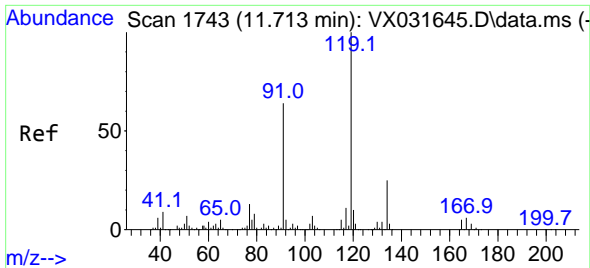
Tgt Ion: 75 Resp: 26785
 Ion Ratio Lower Upper
 75 100
 53 0.0 77.6 116.4#
 89 0.0 37.4 56.0#



#82
 4-Chlorotoluene
 Concen: 0.742 ug/l
 RT: 11.451 min Scan# 1700
 Delta R.T. -0.006 min
 Lab File: VX031660.D
 Acq: 26 Sep 2022 19:46

Tgt Ion: 91 Resp: 1871
 Ion Ratio Lower Upper
 91 100
 126 0.0 15.1 45.3#

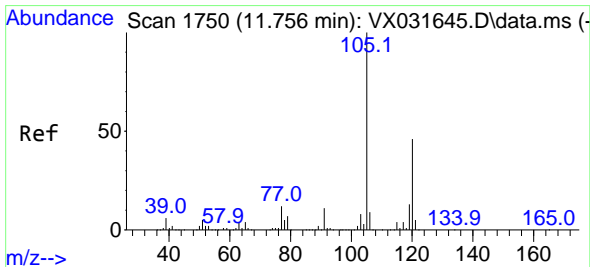
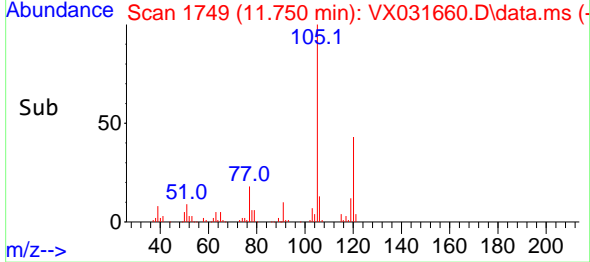
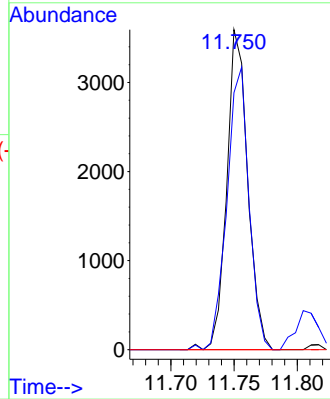
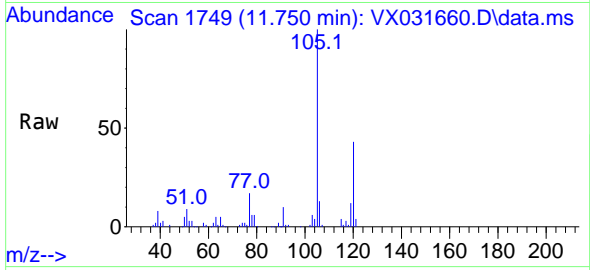




#83
 tert-Butylbenzene
 Concen: 1.593 ug/l
 RT: 11.750 min Scan# 1749
 Delta R.T. 0.031 min
 Lab File: VX031660.D
 Acq: 26 Sep 2022 19:46

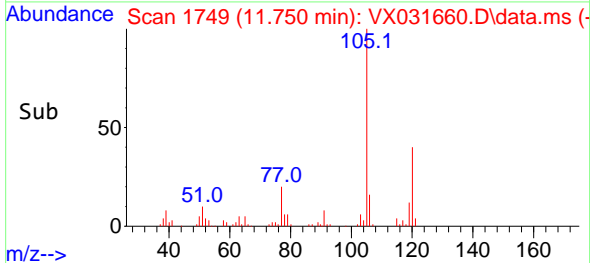
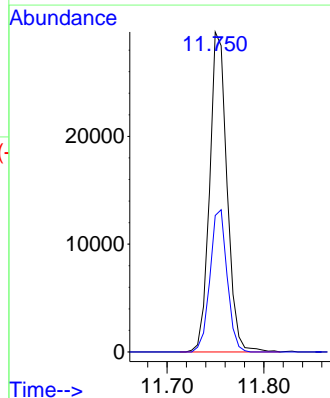
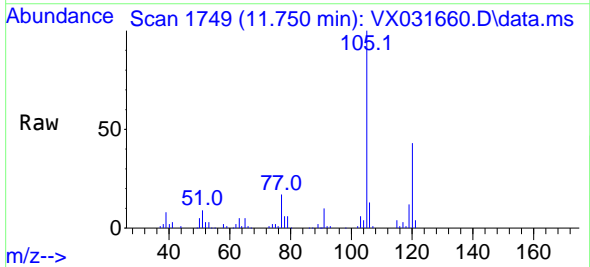
Instrument : MSVOA_X
 ClientSampleId : SB-1DL

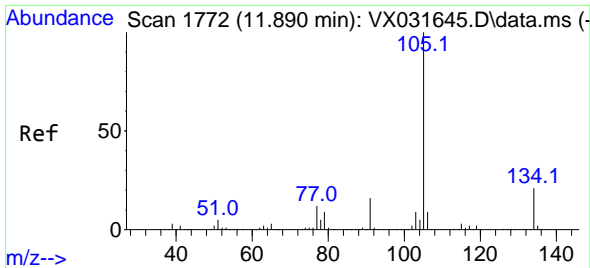
Tgt Ion:119 Resp: 4136
 Ion Ratio Lower Upper
 119 100
 91 93.2 29.2 87.6#
 134 0.0 11.6 34.8#



#84
 1,2,4-Trimethylbenzene
 Concen: 13.942 ug/l
 RT: 11.750 min Scan# 1749
 Delta R.T. -0.006 min
 Lab File: VX031660.D
 Acq: 26 Sep 2022 19:46

Tgt Ion:105 Resp: 37149
 Ion Ratio Lower Upper
 105 100
 120 43.7 22.6 67.8

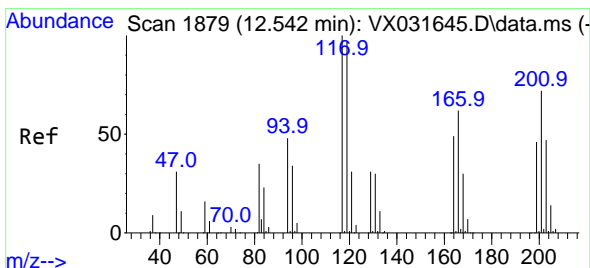
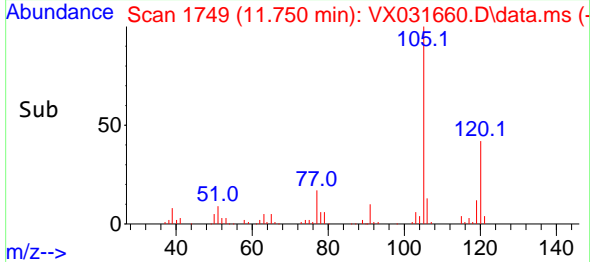
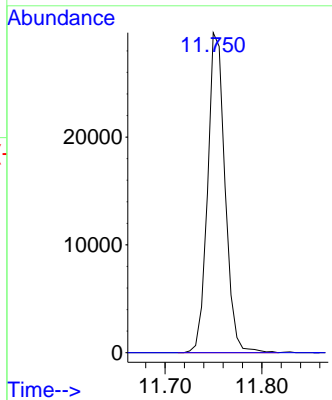
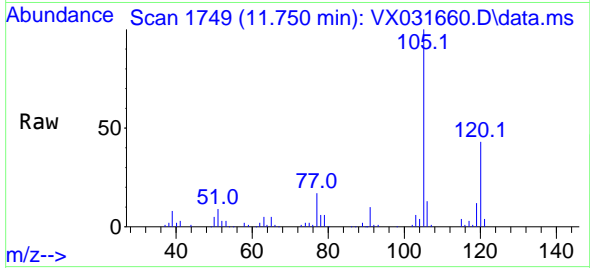




#85
 sec-Butylbenzene
 Concen: 11.260 ug/l
 RT: 11.750 min Scan# 11
 Delta R.T. -0.140 min
 Lab File: VX031660.D
 Acq: 26 Sep 2022 19:46

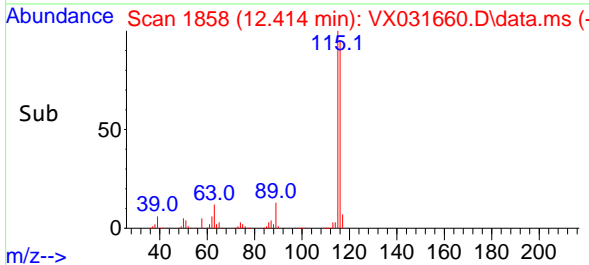
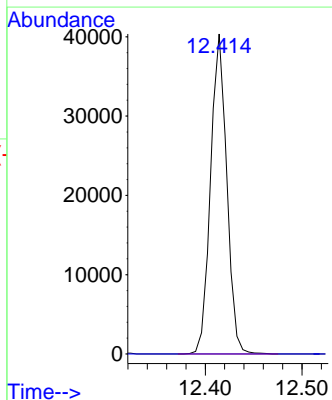
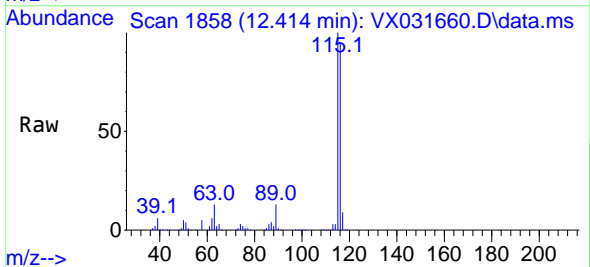
Instrument :
 MSVOA_X
 ClientSampleId :
 SB-1DL

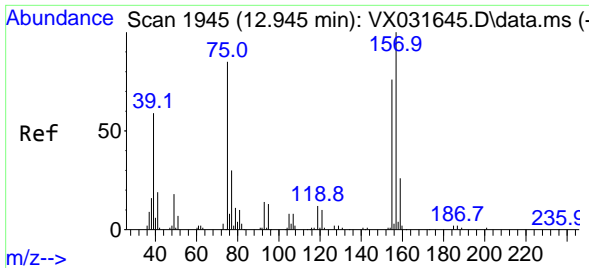
Tgt Ion:105 Resp: 37149
 Ion Ratio Lower Upper
 105 100
 134 0.0 10.4 31.1#



#90
 Hexachloroethane
 Concen: 102.893 ug/l
 RT: 12.414 min Scan# 1858
 Delta R.T. -0.128 min
 Lab File: VX031660.D
 Acq: 26 Sep 2022 19:46

Tgt Ion:117 Resp: 46940
 Ion Ratio Lower Upper
 117 100
 201 0.0 34.8 104.4#



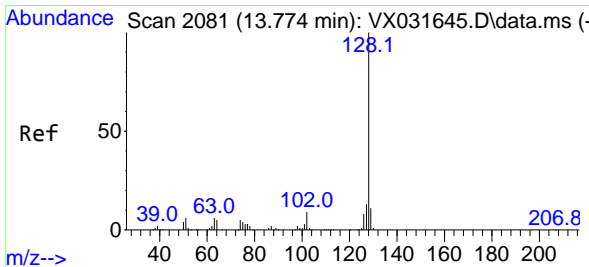
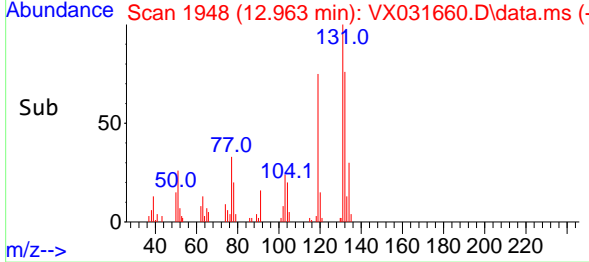
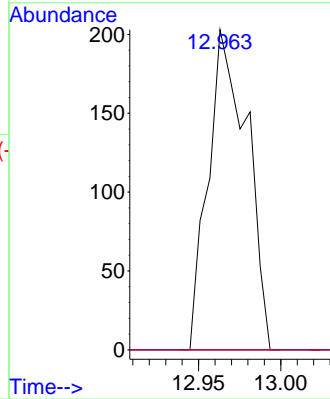
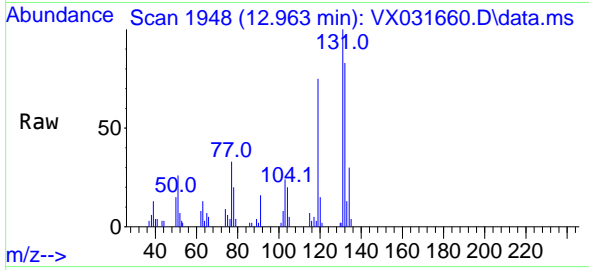


#92
 1,2-Dibromo-3-Chloropropane
 Concen: 1.647 ug/l
 RT: 12.963 min Scan# 1948
 Delta R.T. 0.018 min
 Lab File: VX031660.D
 Acq: 26 Sep 2022 19:46

Instrument : MSVOA_X
 ClientSampleId : SB-1DL

Tgt Ion: 75 Resp: 333

Ion	Ratio	Lower	Upper
75	100		
155	0.0	40.3	120.8#
157	0.0	51.5	154.5#



#95
 Naphthalene
 Concen: 552.368 ug/l
 RT: 13.780 min Scan# 2082
 Delta R.T. 0.006 min
 Lab File: VX031660.D
 Acq: 26 Sep 2022 19:46

Tgt Ion: 128 Resp: 1691086

Ion	Ratio	Lower	Upper
128	100		
127	13.4	10.4	15.6
129	11.3	8.8	13.2

