

Data Path : Z:\voasrv\HPCHEM1\MSVOA_X\Data\VX092622\
 Data File : VX031677.D
 Acq On : 27 Sep 2022 03:08
 Operator : JC/MD
 Sample : PB147856TB
 Misc : 5.0mL/MSVOA_X/WATER
 ALS Vial : 31 Sample Multiplier: 1

Instrument :
 MSVOA_X
 ClientSampleId :
 PB147856TB

Quant Time: Sep 27 04:41:43 2022
 Quant Method : Z:\voasrv\HPCHEM1\MSVOA_X\Method\82X092622W.M
 Quant Title : SW846 8260
 QLast Update : Tue Sep 27 01:44:18 2022
 Response via : Initial Calibration

Compound	R.T.	QIon	Response	Conc	Units	Dev(Min)

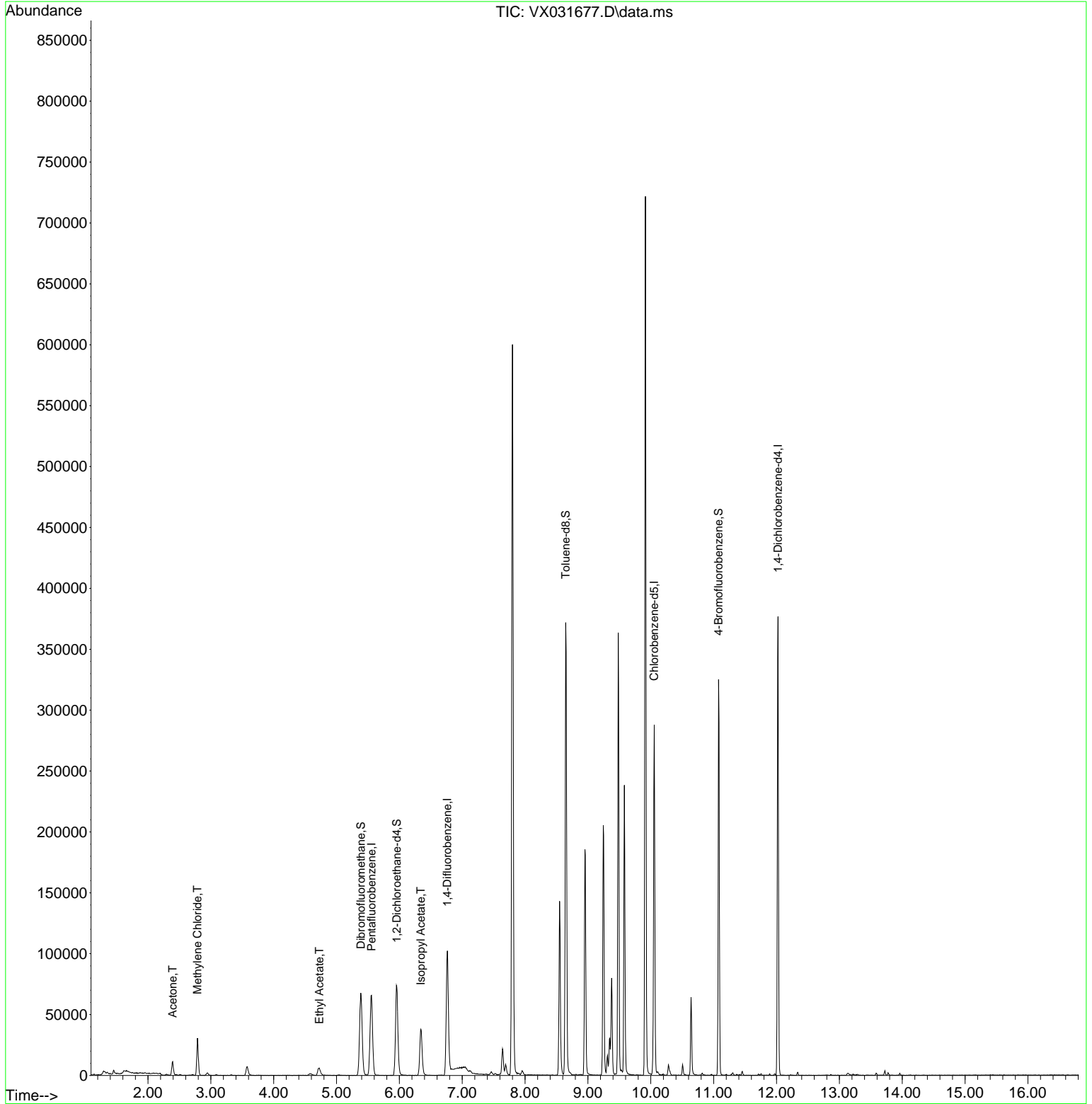
Internal Standards						
1) Pentafluorobenzene	5.556	168	61965	50.000	ug/l	0.00
34) 1,4-Difluorobenzene	6.763	114	101990	50.000	ug/l	0.00
63) Chlorobenzene-d5	10.055	117	125128	50.000	ug/l	0.00
72) 1,4-Dichlorobenzene-d4	12.024	152	74856	50.000	ug/l	0.00
System Monitoring Compounds						
33) 1,2-Dichloroethane-d4	5.958	65	69618	52.935	ug/l	0.00
Spiked Amount	50.000	Range	74 - 125	Recovery	=	105.880%
35) Dibromofluoromethane	5.385	113	56279	46.311	ug/l	0.00
Spiked Amount	50.000	Range	75 - 124	Recovery	=	92.620%
50) Toluene-d8	8.647	98	218247	49.537	ug/l	0.00
Spiked Amount	50.000	Range	86 - 113	Recovery	=	99.080%
62) 4-Bromofluorobenzene	11.079	95	79829	49.437	ug/l	0.00
Spiked Amount	50.000	Range	83 - 123	Recovery	=	98.880%
Target Compounds						
						Qvalue
16) Acetone	2.392	43	13065	25.860	ug/l	90
20) Methylene Chloride	2.788	84	12435	13.724	ug/l	95
37) Ethyl Acetate	4.727	43	11293	8.022	ug/l	97
43) Isopropyl Acetate	6.342	43	51756	23.360	ug/l	96

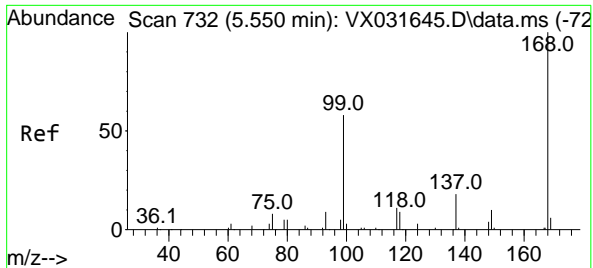
(#) = qualifier out of range (m) = manual integration (+) = signals summed

Data Path : Z:\voasrv\HPCHEM1\MSVOA_X\Data\VX092622\
 Data File : VX031677.D
 Acq On : 27 Sep 2022 03:08
 Operator : JC/MD
 Sample : PB147856TB
 Misc : 5.0mL/MSVOA_X/WATER
 ALS Vial : 31 Sample Multiplier: 1

Instrument :
 MSVOA_X
 ClientSampleId :
 PB147856TB

Quant Time: Sep 27 04:41:43 2022
 Quant Method : Z:\voasrv\HPCHEM1\MSVOA_X\Method\82X092622W.M
 Quant Title : SW846 8260
 QLast Update : Tue Sep 27 01:44:18 2022
 Response via : Initial Calibration

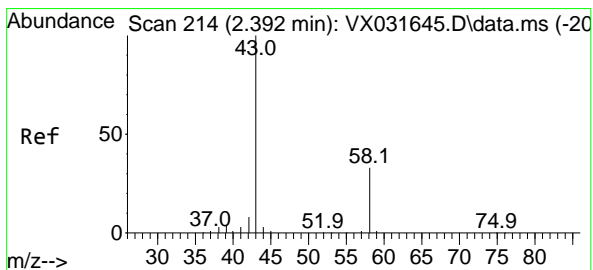
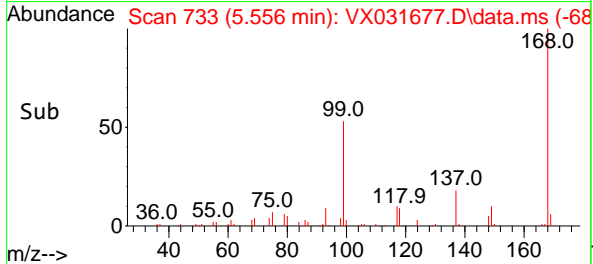
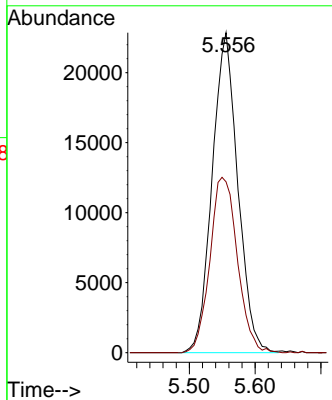
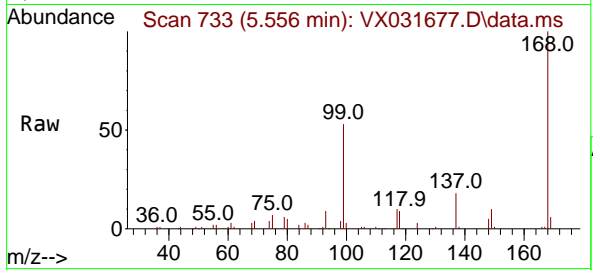




#1
 Pentafluorobenzene
 Concen: 50.000 ug/l
 RT: 5.556 min Scan# 71
 Delta R.T. -0.000 min
 Lab File: VX031677.D
 Acq: 27 Sep 2022 03:08

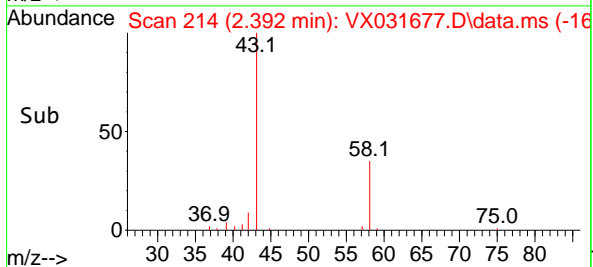
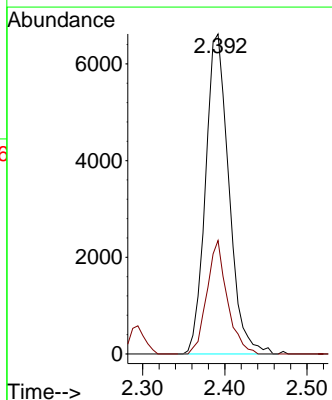
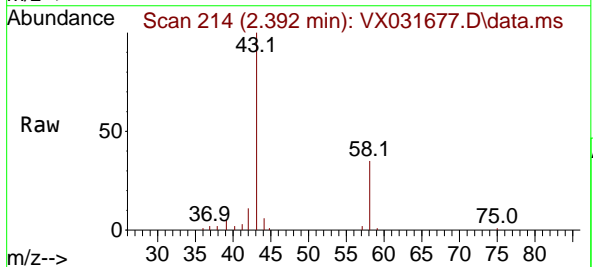
Instrument : MSVOA_X
 ClientSampleId : PB147856TB

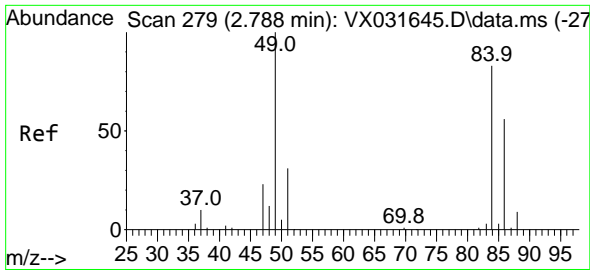
Tgt Ion:168 Resp: 61965
 Ion Ratio Lower Upper
 168 100
 99 53.4 48.8 73.2



#16
 Acetone
 Concen: 25.860 ug/l
 RT: 2.392 min Scan# 214
 Delta R.T. 0.006 min
 Lab File: VX031677.D
 Acq: 27 Sep 2022 03:08

Tgt Ion: 43 Resp: 13065
 Ion Ratio Lower Upper
 43 100
 58 35.5 23.8 35.8

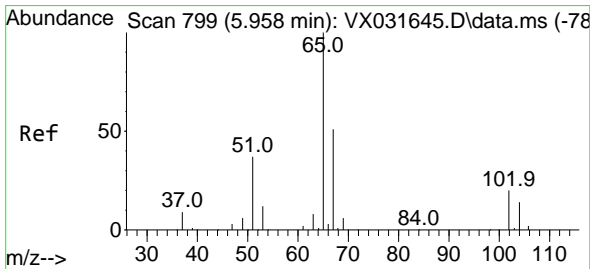
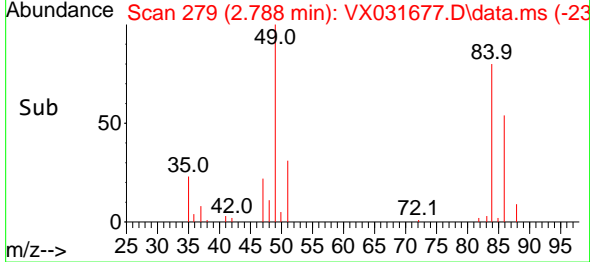
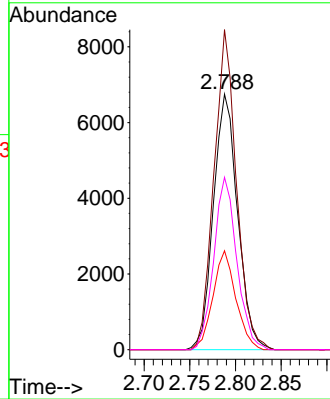
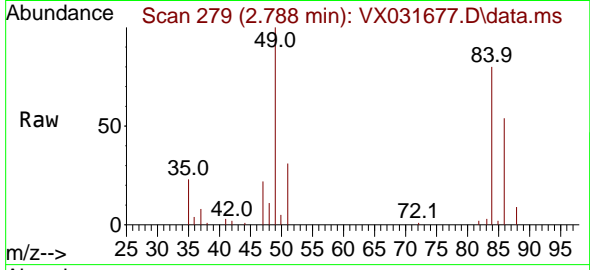




#20
 Methylene Chloride
 Concen: 13.724 ug/l
 RT: 2.788 min Scan# 21
 Delta R.T. -0.000 min
 Lab File: VX031677.D
 Acq: 27 Sep 2022 03:08

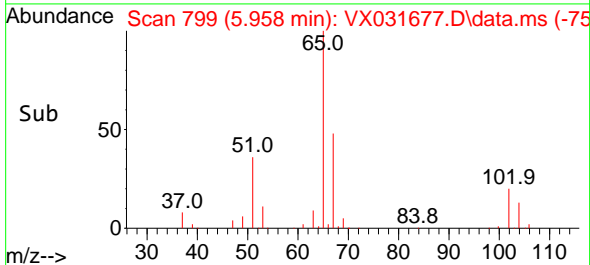
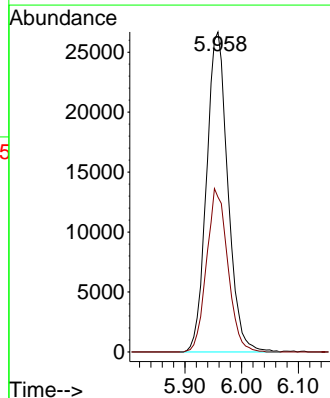
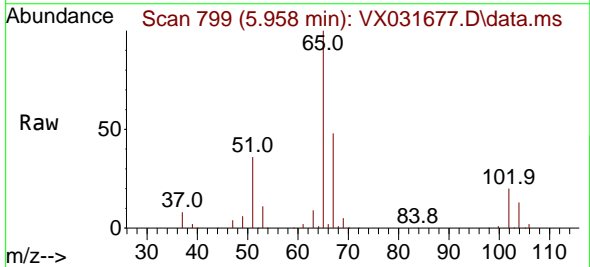
Instrument :
 MSVOA_X
 ClientSampleId :
 PB147856TB

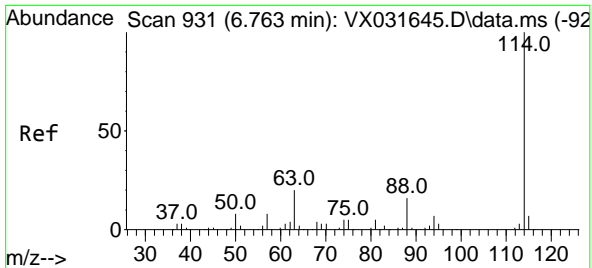
Tgt Ion	Resp	Lower	Upper
84	12435		
84	100		
49	125.3	105.9	158.9
51	38.7	32.2	48.2
86	67.4	50.8	76.2



#33
 1,2-Dichloroethane-d4
 Concen: 52.935 ug/l
 RT: 5.958 min Scan# 799
 Delta R.T. 0.000 min
 Lab File: VX031677.D
 Acq: 27 Sep 2022 03:08

Tgt Ion	Resp	Lower	Upper
65	69618		
65	100		
67	50.8	0.0	102.4

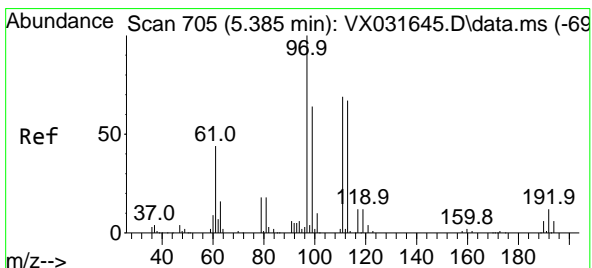
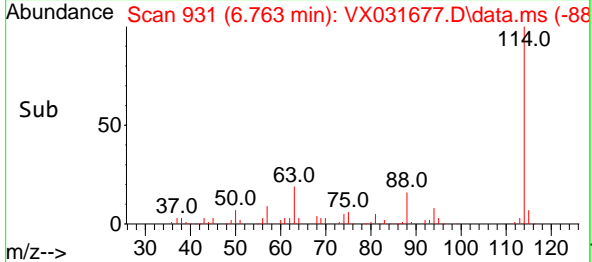
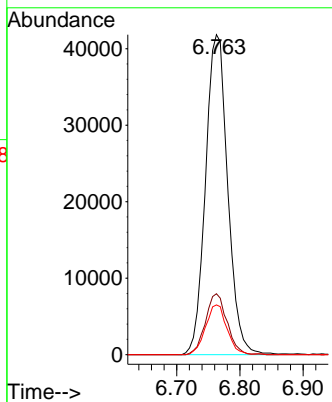
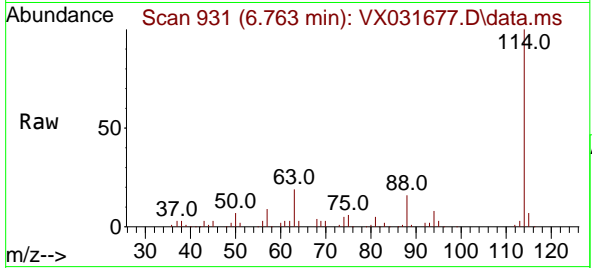




#34
 1,4-Difluorobenzene
 Concen: 50.000 ug/l
 RT: 6.763 min Scan# 911
 Delta R.T. -0.000 min
 Lab File: VX031677.D
 Acq: 27 Sep 2022 03:08

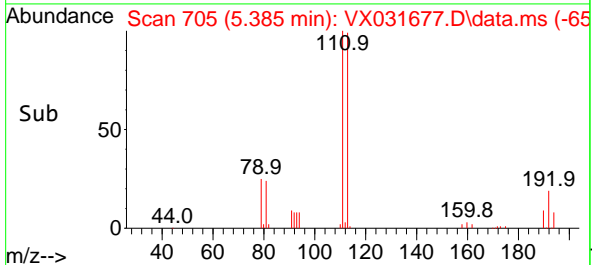
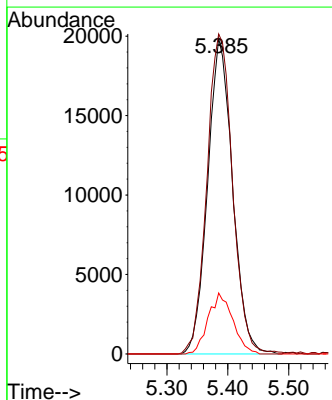
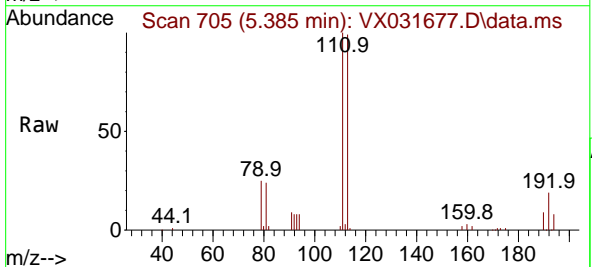
Instrument : MSVOA_X
 ClientSampleId : PB147856TB

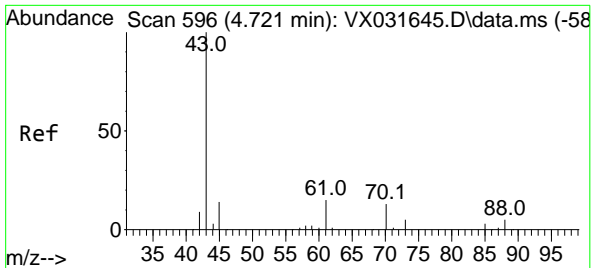
Tgt Ion	Resp	Lower	Upper
114	101990		
63	19.0	0.0	42.6
88	15.6	0.0	33.0



#35
 Dibromofluoromethane
 Concen: 46.311 ug/l
 RT: 5.385 min Scan# 705
 Delta R.T. -0.006 min
 Lab File: VX031677.D
 Acq: 27 Sep 2022 03:08

Tgt Ion	Resp	Lower	Upper
113	56279		
113	100		
111	104.8	82.4	123.6
192	19.1	14.1	21.1

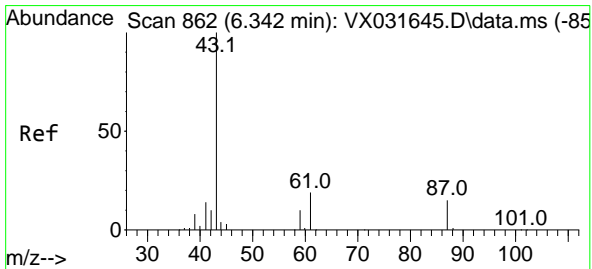
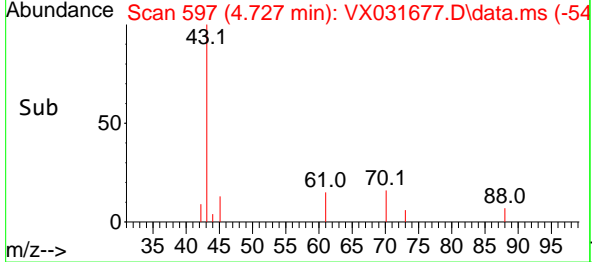
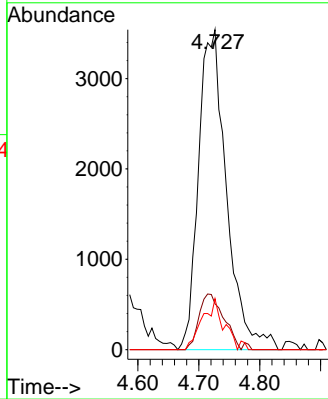
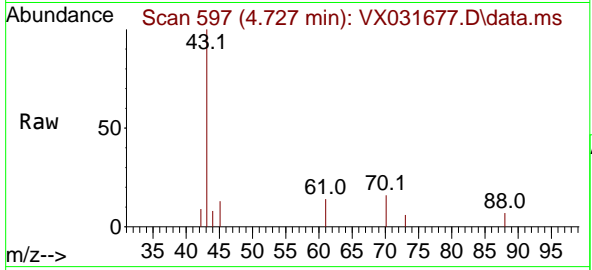




#37
 Ethyl Acetate
 Concen: 8.022 ug/l
 RT: 4.727 min Scan# 597
 Delta R.T. 0.006 min
 Lab File: VX031677.D
 Acq: 27 Sep 2022 03:08

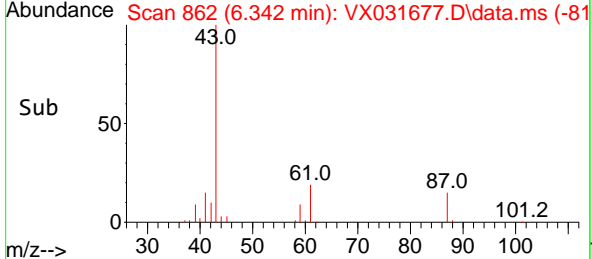
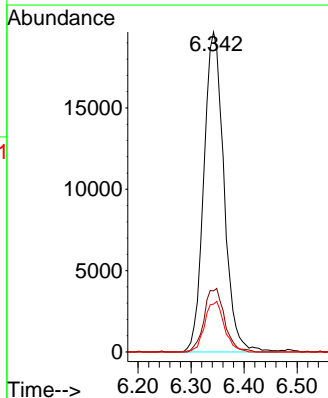
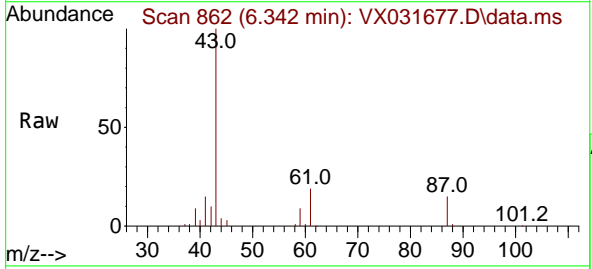
Instrument : MSVOA_X
 ClientSampleId : PB147856TB

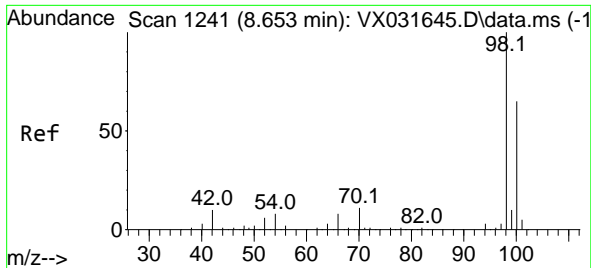
Tgt Ion	Resp	Lower	Upper
43	11293		
61	15.4	11.1	16.7
70	12.0	8.6	13.0



#43
 Isopropyl Acetate
 Concen: 23.360 ug/l
 RT: 6.342 min Scan# 862
 Delta R.T. 0.000 min
 Lab File: VX031677.D
 Acq: 27 Sep 2022 03:08

Tgt Ion	Resp	Lower	Upper
43	51756		
61	20.2	15.3	22.9
87	15.4	10.6	15.8

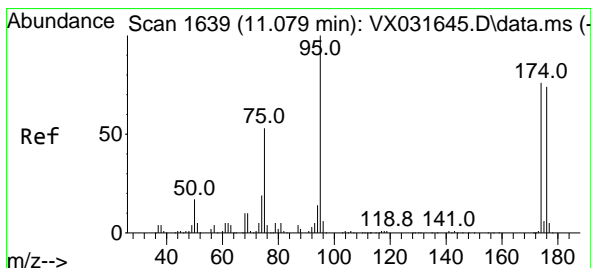
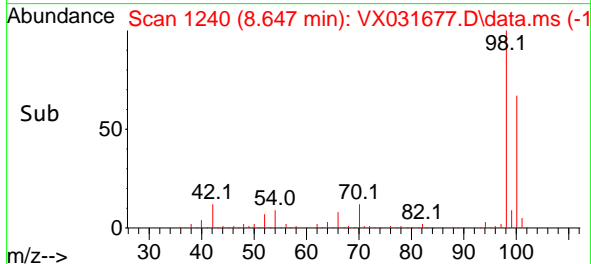
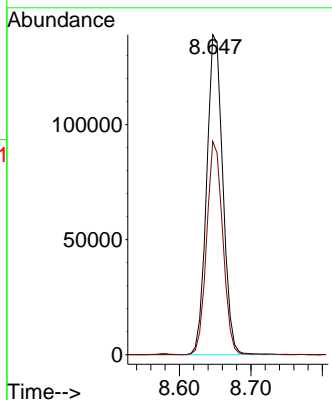
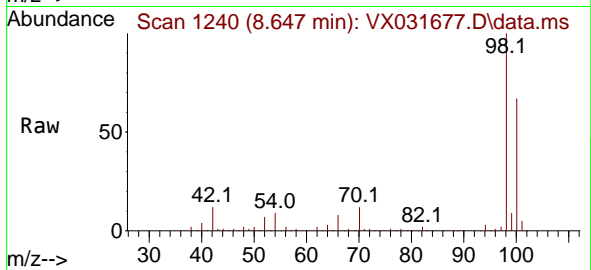




#50
 Toluene-d8
 Concen: 49.537 ug/l
 RT: 8.647 min Scan# 11
 Delta R.T. -0.006 min
 Lab File: VX031677.D
 Acq: 27 Sep 2022 03:08

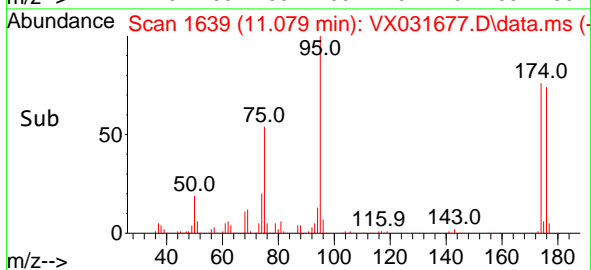
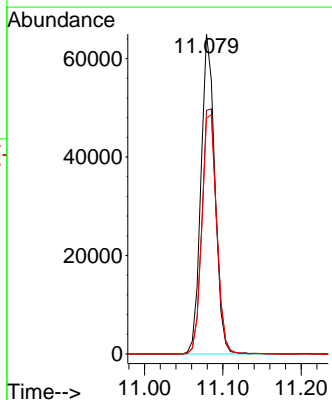
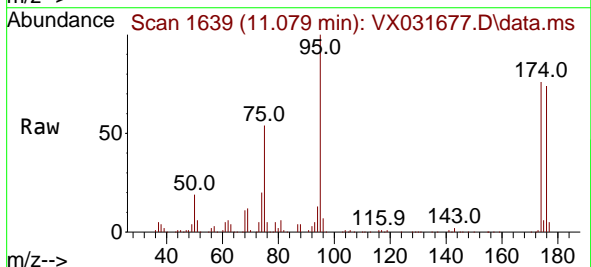
Instrument : MSVOA_X
 ClientSampleId : PB147856TB

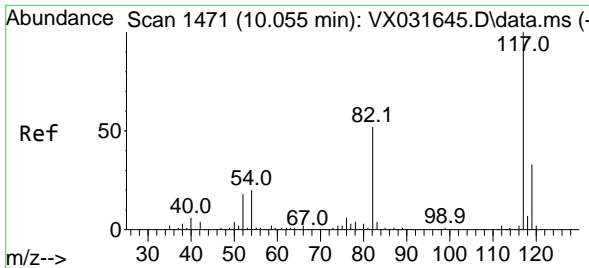
Tgt Ion: 98 Resp: 218247
 Ion Ratio Lower Upper
 98 100
 100 66.3 52.5 78.7



#62
 4-Bromofluorobenzene
 Concen: 49.437 ug/l
 RT: 11.079 min Scan# 1639
 Delta R.T. 0.000 min
 Lab File: VX031677.D
 Acq: 27 Sep 2022 03:08

Tgt Ion: 95 Resp: 79829
 Ion Ratio Lower Upper
 95 100
 174 81.5 0.0 153.2
 176 79.4 0.0 144.0



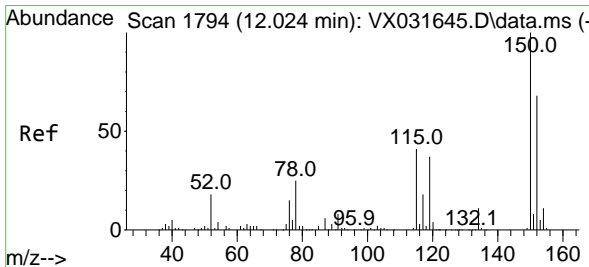
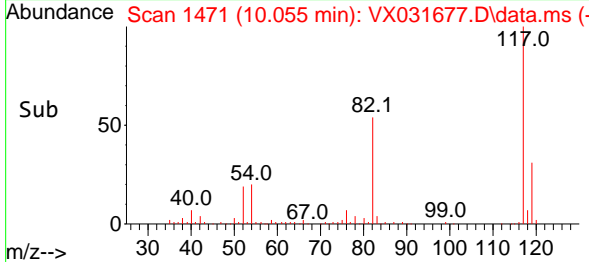
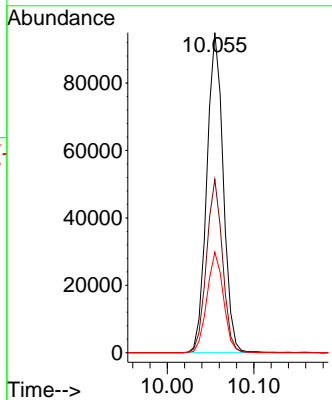
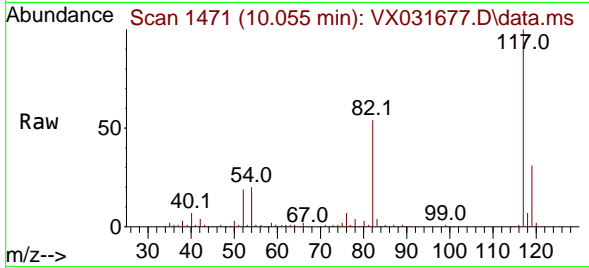


#63
 Chlorobenzene-d5
 Concen: 50.000 ug/l
 RT: 10.055 min Scan# 1471
 Delta R.T. -0.000 min
 Lab File: VX031677.D
 Acq: 27 Sep 2022 03:08

Instrument : MSVOA_X
 ClientSampleId : PB147856TB

Tgt Ion:117 Resp: 125128

Ion	Ratio	Lower	Upper
117	100		
82	54.1	46.8	70.2
119	31.4	26.4	39.6



#72
 1,4-Dichlorobenzene-d4
 Concen: 50.000 ug/l
 RT: 12.024 min Scan# 1794
 Delta R.T. 0.000 min
 Lab File: VX031677.D
 Acq: 27 Sep 2022 03:08

Tgt Ion:152 Resp: 74856

Ion	Ratio	Lower	Upper
152	100		
115	59.5	43.4	130.1
150	160.1	0.0	346.8

