

Data Path : Z:\voasrv\HPCHEM1\MSVOA\_X\Data\VX092622\  
 Data File : VX031671.D  
 Acq On : 27 Sep 2022 00:48  
 Operator : JC/MD  
 Sample : N4791-05  
 Misc : 5.0mL/MSVOA\_X/WATER  
 ALS Vial : 31 Sample Multiplier: 1

Instrument :  
 MSVOA\_X  
 ClientSampleId :  
 BP-VPB-RW5-GW-538-540

Integration Parameters: RTEINT.P

Integrator: RTE  
 Smoothing : ON Filtering: 5  
 Sampling : 1 Min Area: 3 % of largest Peak  
 Start Thrs: 0.2 Max Peaks: 100  
 Stop Thrs : 0 Peak Location: TOP

If leading or trailing edge < 100 prefer < Baseline drop else tangent >  
 Peak separation: 5

Method : Z:\voasrv\HPCHEM1\MSVOA\_X\Method\82X092622W.M  
 Title : SW846 8260

Signal : TIC: VX031671.D\data.ms

peak #	R.T. min	first scan	max scan	last scan	PK TY	peak height	corr. area	corr. % max.	% of total
1	2.331	197	204	210	rBV2	11811	21879	2.60%	0.768%
2	5.385	694	705	720	rBV3	51628	152898	18.15%	5.365%
3	5.550	720	732	747	rVB	51485	145588	17.28%	5.108%
4	5.958	789	799	812	rBV	59515	154599	18.35%	5.425%
5	6.763	922	931	941	rBV	76566	178589	21.20%	6.266%
6	7.123	981	990	1009	rBV	398030	842391	100.00%	29.558%
7	8.647	1233	1240	1250	rBV	278201	442214	52.50%	15.516%
8	9.275	1337	1343	1348	rBV2	16588	23395	2.78%	0.821%
9	10.055	1464	1471	1481	rBV	200686	265305	31.49%	9.309%
10	11.079	1634	1639	1648	rBV	218539	287254	34.10%	10.079%
11	12.024	1788	1794	1808	rBV	274982	335863	39.87%	11.785%

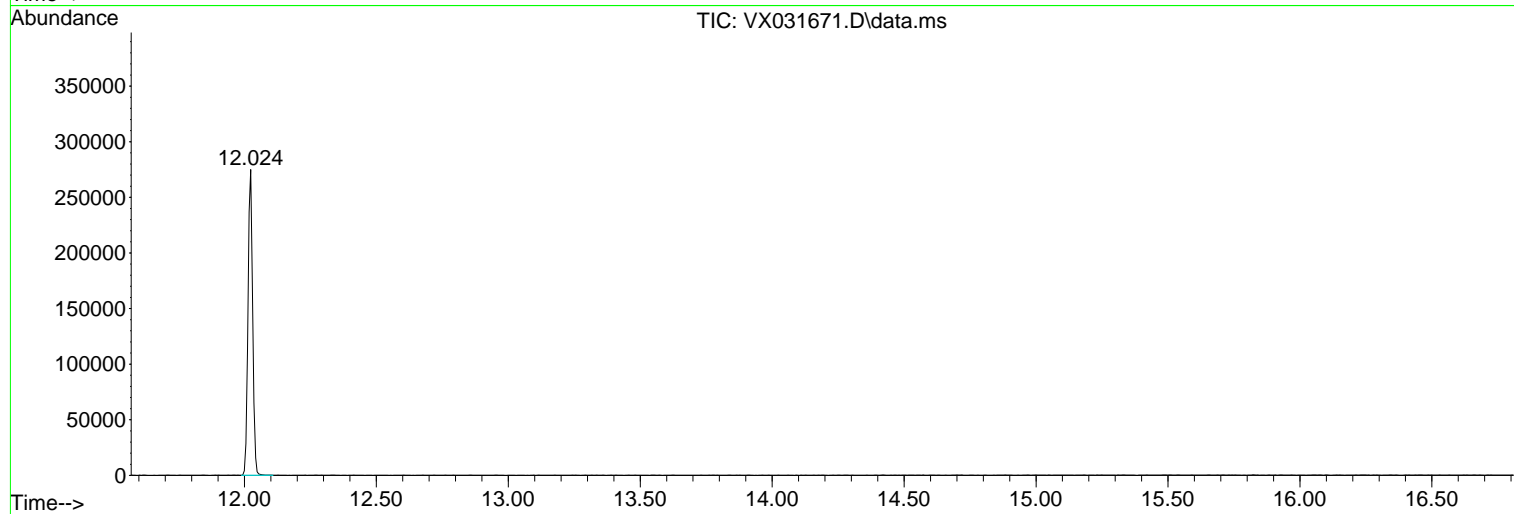
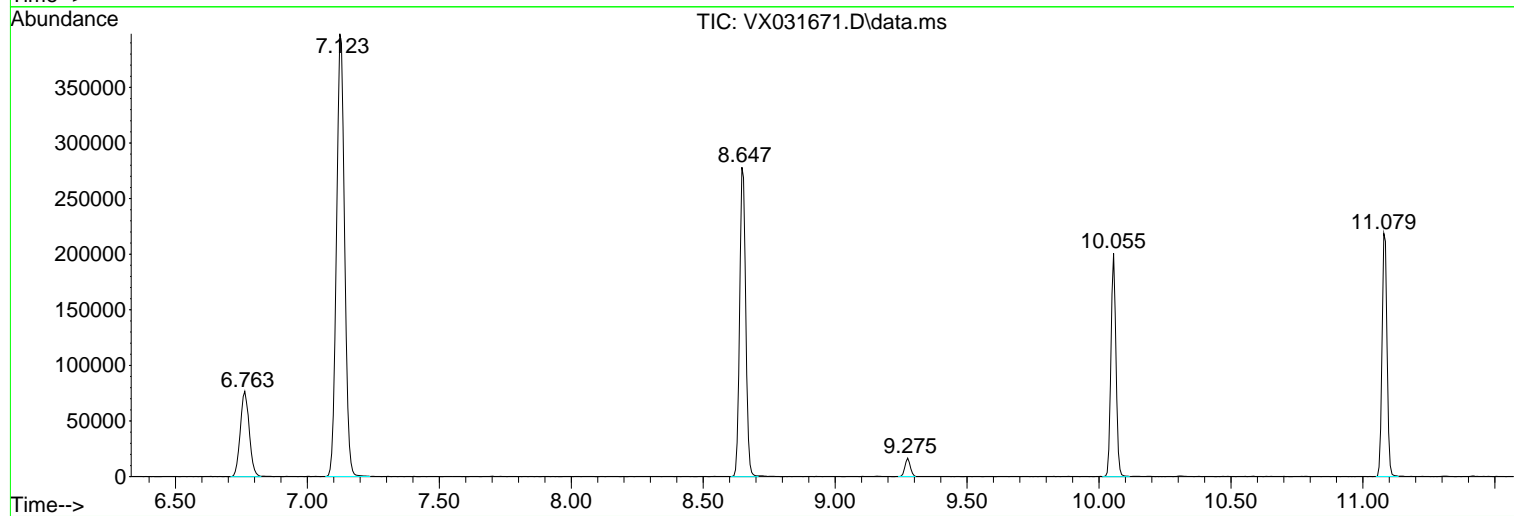
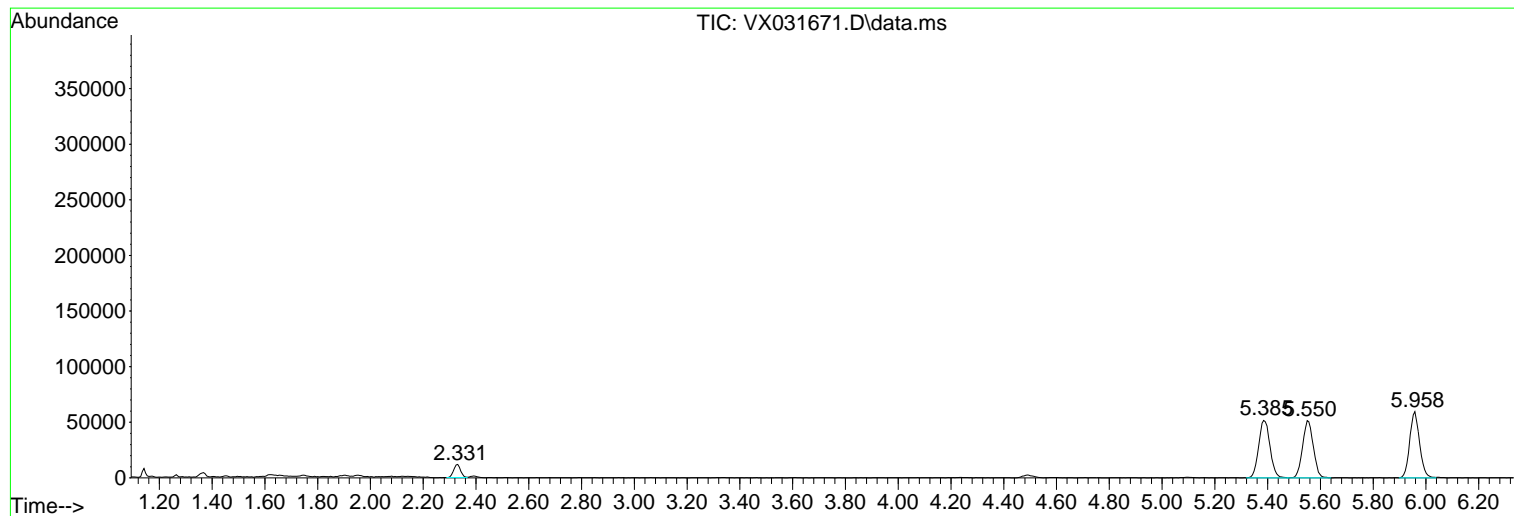
Sum of corrected areas: 2849975

Data Path : Z:\voasrv\HPCHEM1\MSVOA\_X\Data\VX092622\  
Data File : VX031671.D  
Acq On : 27 Sep 2022 00:48  
Operator : JC/MD  
Sample : N4791-05  
Misc : 5.0mL/MSVOA\_X/WATER  
ALS Vial : 31 Sample Multiplier: 1

Instrument :  
MSVOA\_X  
ClientSampleId :  
BP-VPB-RW5-GW-538-540

Quant Method : Z:\voasrv\HPCHEM1\MSVOA\_X\Method\82X092622W.M  
Quant Title : SW846 8260

TIC Library : C:\Database\NIST20.L  
TIC Integration Parameters: LSCINT.P



Library Search Compound Report

Data Path : Z:\voasrv\HPCHEM1\MSVOA\_X\Data\VX092622\  
Data File : VX031671.D  
Acq On : 27 Sep 2022 00:48  
Operator : JC/MD  
Sample : N4791-05  
Misc : 5.0mL/MSVOA\_X/WATER  
ALS Vial : 31 Sample Multiplier: 1

**Instrument :**  
MSVOA\_X  
**ClientSampleId :**  
BP-VPB-RW5-GW-538-540

Quant Method : Z:\voasrv\HPCHEM1\MSVOA\_X\Method\82X092622W.M  
Quant Title : SW846 8260

TIC Library : C:\Database\NIST20.L  
TIC Integration Parameters: LSCINT.P

No Library Search Compounds Detected

\*\*\*\*\*

Data Path : Z:\voasrv\HPCHEM1\MSVOA\_X\Data\VX092622\  
Data File : VX031671.D  
Acq On : 27 Sep 2022 00:48  
Operator : JC/MD  
Sample : N4791-05  
Misc : 5.0mL/MSVOA\_X/WATER  
ALS Vial : 31 Sample Multiplier: 1

Instrument :  
MSVOA\_X  
ClientSampleId :  
BP-VPB-RW5-GW-538-540

Quant Method : Z:\voasrv\HPCHEM1\MSVOA\_X\Method\82X092622W.M  
Quant Title : SW846 8260

TIC Library : C:\Database\NIST20.L  
TIC Integration Parameters: LSCINT.P

TIC Top Hit name	RT	EstConc	Units	Response	--Internal Standard--			
					#	RT	Resp	Conc

---