

Data Path : Z:\voasrv\HPCHEM1\MSVOA_X\Data\VX103124\
 Data File : VX043639.D
 Acq On : 31 Oct 2024 10:13
 Operator : JC/MD
 Sample : VX1031WBL01
 Misc : 5.0mL/MSVOA_X/WATER
 ALS Vial : 1 Sample Multiplier: 1

Instrument :
 MSVOA_X
 ClientSampleId :
 VX1031WBL01

Integration Parameters: RTEINT.P
 Integrator: RTE
 Smoothing : ON Filtering: 5
 Sampling : 1 Min Area: 3 % of largest Peak
 Start Thrs: 0.2 Max Peaks: 100
 Stop Thrs : 0 Peak Location: TOP

If leading or trailing edge < 100 prefer < Baseline drop else tangent >
 Peak separation: 5

Method : Z:\voasrv\HPCHEM1\MSVOA_X\Method\82X102824W.M
 Title : SW846 8260

Signal : TIC: VX043639.D\data.ms

peak #	R.T. min	first scan	max scan	last scan	PK TY	peak height	corr. area	corr. % max.	% of total
1	1.605	65	85	86	rBV5	12402	42702	5.47%	1.056%
2	2.947	296	305	312	rBV2	9395	21695	2.78%	0.536%
3	5.379	693	704	720	rBV	87752	261191	33.44%	6.458%
4	5.544	720	731	747	rBV	141376	417649	53.47%	10.326%
5	5.952	788	798	810	rBV	98725	260016	33.29%	6.429%
6	6.757	921	930	952	rBV	237583	583049	74.64%	14.415%
7	8.647	1233	1240	1258	rBV	478212	781102	100.00%	19.312%
8	10.055	1464	1471	1484	rBV	443726	648766	83.06%	16.040%
9	11.079	1634	1639	1651	rBV	356972	470043	60.18%	11.621%
10	12.018	1788	1793	1804	rBV	429436	558499	71.50%	13.808%

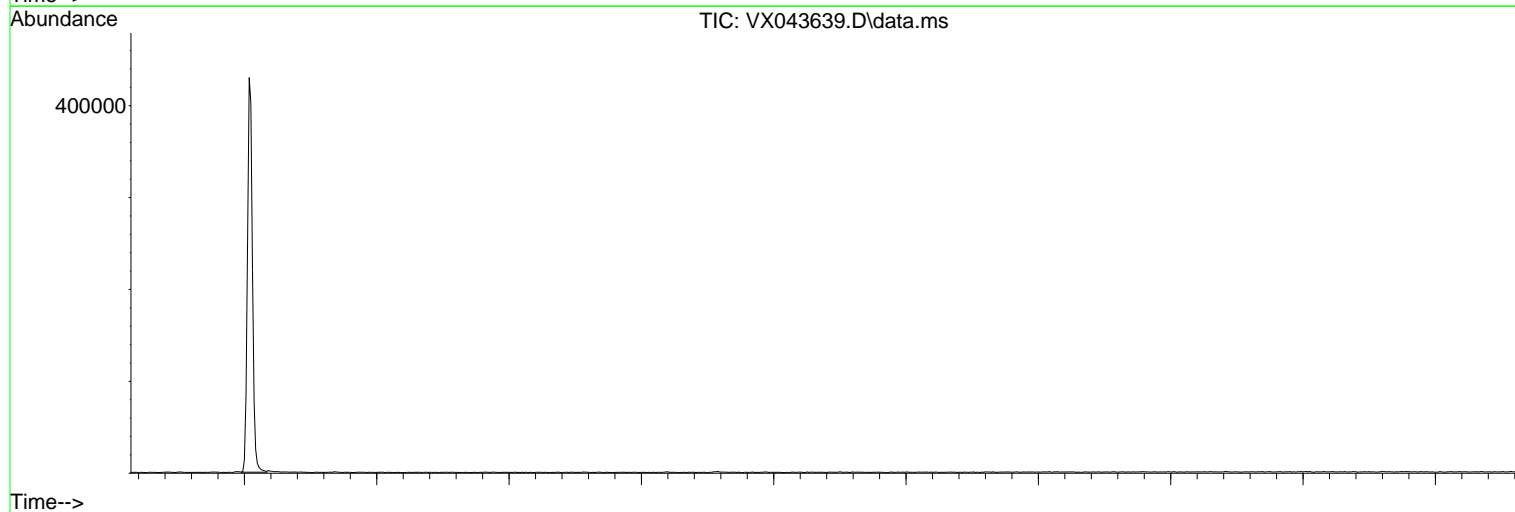
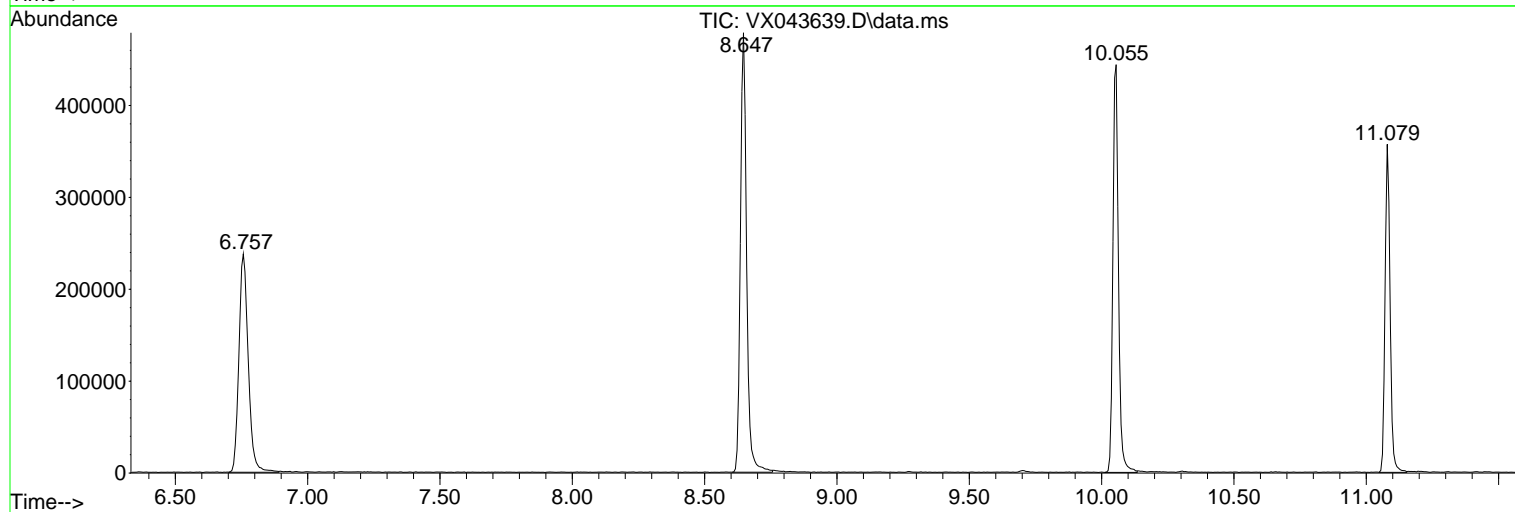
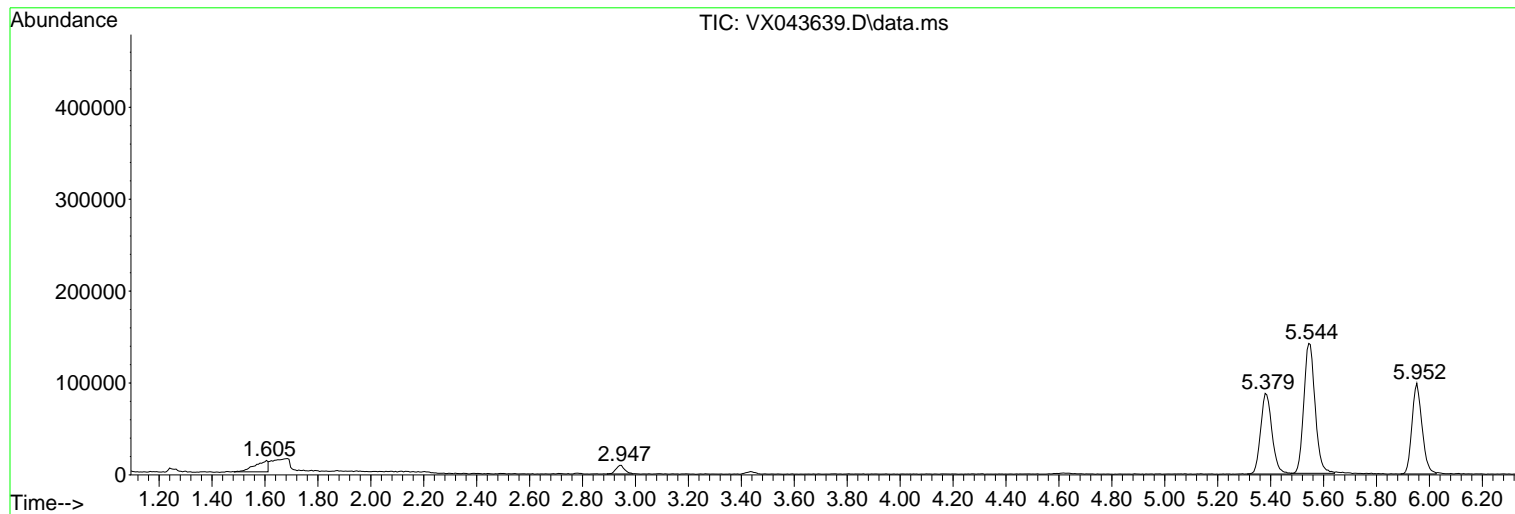
Sum of corrected areas: 4044712

Data Path : Z:\voasrv\HPCHEM1\MSVOA_X\Data\VX103124\
Data File : VX043639.D
Acq On : 31 Oct 2024 10:13
Operator : JC/MD
Sample : VX1031WBL01
Misc : 5.0mL/MSVOA_X/WATER
ALS Vial : 1 Sample Multiplier: 1

Instrument :
MSVOA_X
ClientSampleId :
VX1031WBL01

Quant Method : Z:\voasrv\HPCHEM1\MSVOA_X\Method\82X102824W.M
Quant Title : SW846 8260

TIC Library : C:\Database\NIST20.L
TIC Integration Parameters: LSCINT.P



Data Path : Z:\voasrv\HPCHEM1\MSVOA_X\Data\VX103124\
Data File : VX043639.D
Acq On : 31 Oct 2024 10:13
Operator : JC/MD
Sample : VX1031WBL01
Misc : 5.0mL/MSVOA_X/WATER
ALS Vial : 1 Sample Multiplier: 1

Instrument :
MSVOA_X
ClientSampleId :
VX1031WBL01

Quant Method : Z:\voasrv\HPCHEM1\MSVOA_X\Method\82X102824W.M
Quant Title : SW846 8260

TIC Library : C:\Database\NIST20.L
TIC Integration Parameters: LSCINT.P

No Library Search Compounds Detected

Data Path : Z:\voasrv\HPCHEM1\MSVOA_X\Data\VX103124\
Data File : VX043639.D
Acq On : 31 Oct 2024 10:13
Operator : JC/MD
Sample : VX1031WBL01
Misc : 5.0mL/MSVOA_X/WATER
ALS Vial : 1 Sample Multiplier: 1

Instrument :
MSVOA_X
ClientSampleId :
VX1031WBL01

Quant Method : Z:\voasrv\HPCHEM1\MSVOA_X\Method\82X102824W.M
Quant Title : SW846 8260

TIC Library : C:\Database\NIST20.L
TIC Integration Parameters: LSCINT.P

TIC Top Hit name	RT	EstConc	Units	Response	#	RT	Resp	Conc
------------------	----	---------	-------	----------	---	----	------	------

-----|