

Data Path : Z:\voasrv\HPCHEM1\MSVOA_X\Data\VX110422\
 Data File : VX032583.D
 Acq On : 04 Nov 2022 17:48
 Operator : JC/MD
 Sample : N5490-04
 Misc : 5.0mL/MSVOA_X/WATER
 ALS Vial : 21 Sample Multiplier: 1

Instrument :
 MSVOA_X
 ClientSampleId :
 STORAGE-BLANK-SAMPLE-MANAG

Quant Time: Nov 05 00:39:01 2022
 Quant Method : Z:\voasrv\HPCHEM1\MSVOA_X\Method\82X102622W.M
 Quant Title : SW846 8260
 QLast Update : Thu Oct 27 08:28:06 2022
 Response via : Initial Calibration

| Compound | R.T. | QIon | Response | Conc | Units | Dev(Min) |
|-----------------------------|--------|-------|----------|----------|-------|----------|
| Internal Standards | | | | | | |
| 1) Pentafluorobenzene | 5.556 | 168 | 111842 | 50.000 | ug/l | 0.00 |
| 34) 1,4-Difluorobenzene | 6.763 | 114 | 187384 | 50.000 | ug/l | 0.00 |
| 63) Chlorobenzene-d5 | 10.055 | 117 | 167743 | 50.000 | ug/l | 0.00 |
| 72) 1,4-Dichlorobenzene-d4 | 12.024 | 152 | 76656 | 50.000 | ug/l | 0.00 |
| System Monitoring Compounds | | | | | | |
| 33) 1,2-Dichloroethane-d4 | 5.958 | 65 | 77269 | 49.722 | ug/l | 0.00 |
| Spiked Amount | 50.000 | Range | 78 - 117 | Recovery | = | 99.440% |
| 35) Dibromofluoromethane | 5.391 | 113 | 60260 | 45.084 | ug/l | 0.00 |
| Spiked Amount | 50.000 | Range | 75 - 124 | Recovery | = | 90.160% |
| 50) Toluene-d8 | 8.653 | 98 | 223576 | 48.104 | ug/l | 0.00 |
| Spiked Amount | 50.000 | Range | 92 - 112 | Recovery | = | 96.200% |
| 62) 4-Bromofluorobenzene | 11.079 | 95 | 84457 | 46.519 | ug/l | 0.00 |
| Spiked Amount | 50.000 | Range | 83 - 123 | Recovery | = | 93.040% |

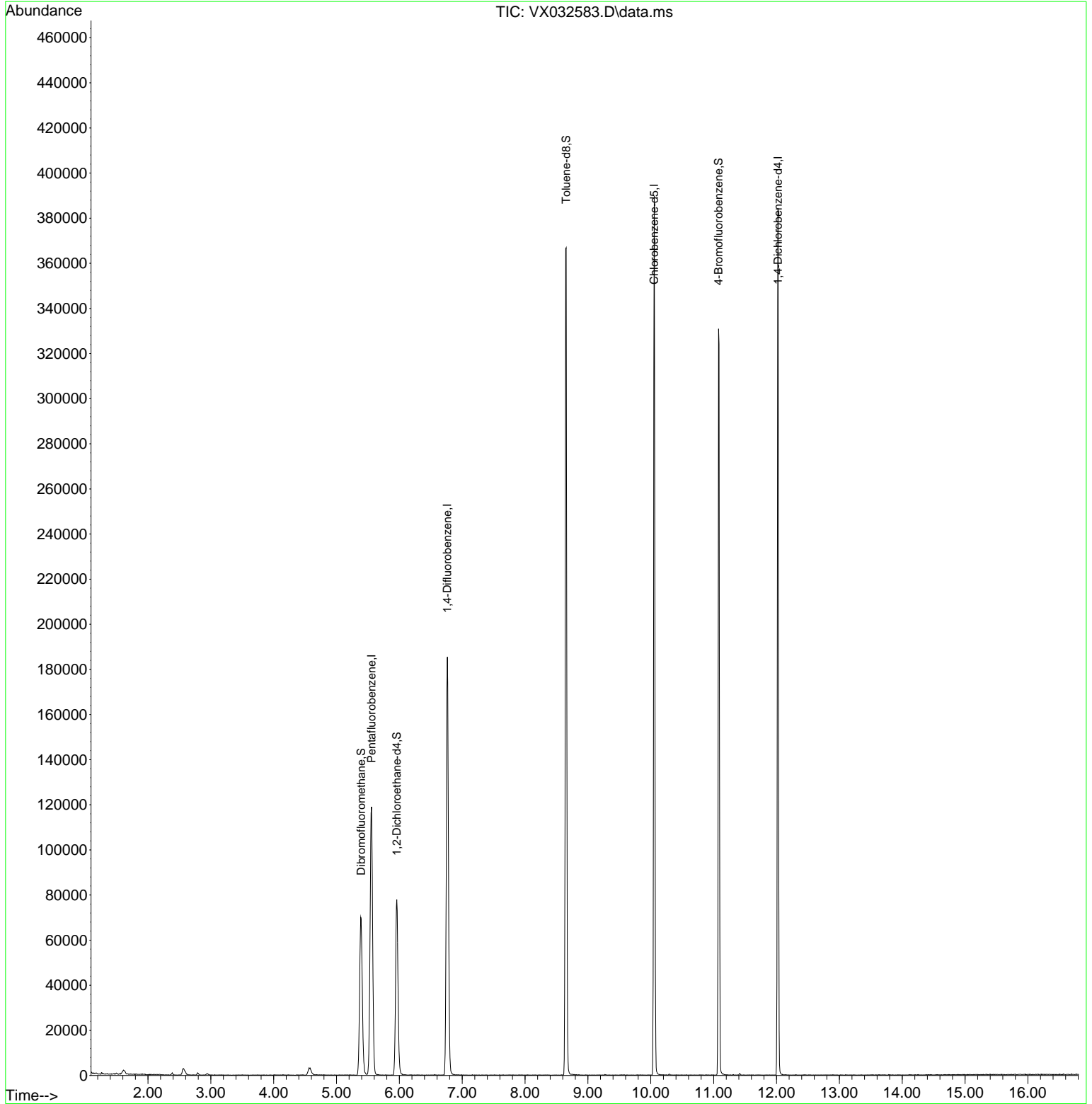
Target Compounds Qvalue

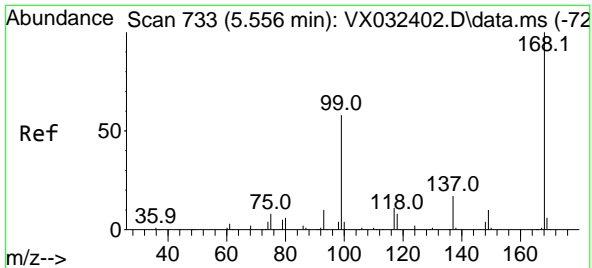
(#) = qualifier out of range (m) = manual integration (+) = signals summed

Data Path : Z:\voasrv\HPCHEM1\MSVOA_X\Data\VX110422\
 Data File : VX032583.D
 Acq On : 04 Nov 2022 17:48
 Operator : JC/MD
 Sample : N5490-04
 Misc : 5.0mL/MSVOA_X/WATER
 ALS Vial : 21 Sample Multiplier: 1

Instrument :
 MSVOA_X
 ClientSampleId :
 STORAGE-BLANK-SAMPLE-MANAG

Quant Time: Nov 05 00:39:01 2022
 Quant Method : Z:\voasrv\HPCHEM1\MSVOA_X\Method\82X102622W.M
 Quant Title : SW846 8260
 QLast Update : Thu Oct 27 08:28:06 2022
 Response via : Initial Calibration

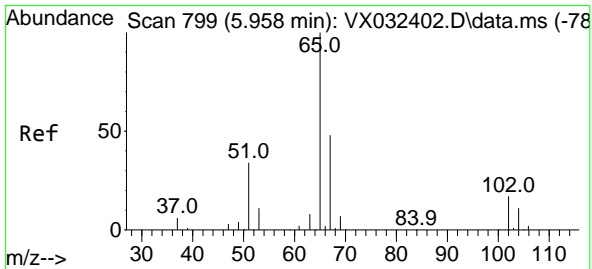
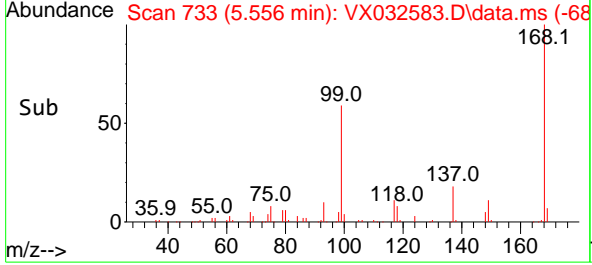
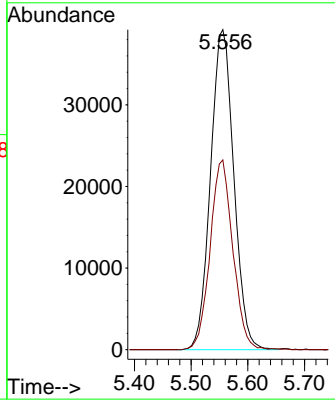
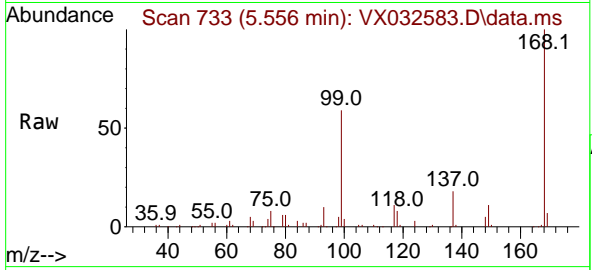




#1
 Pentafluorobenzene
 Concen: 50.000 ug/l
 RT: 5.556 min Scan# 711
 Delta R.T. -0.000 min
 Lab File: VX032583.D
 Acq: 04 Nov 2022 17:48

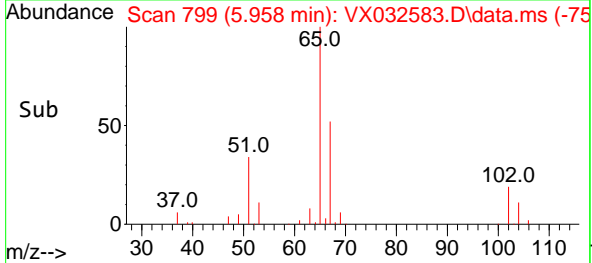
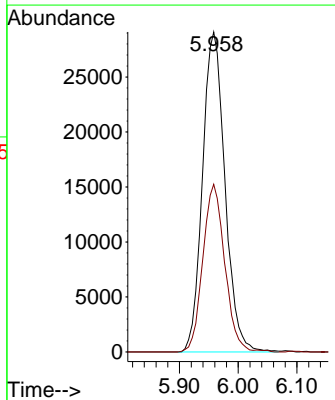
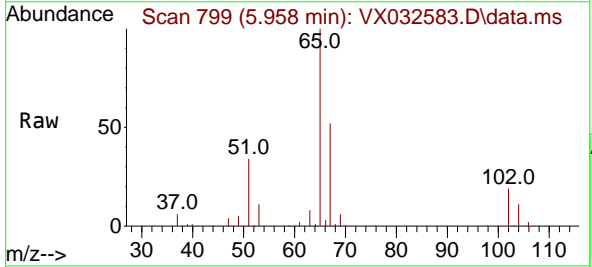
Instrument : MSVOA_X
 ClientSampleId : STORAGE-BLANK-SAMPLE-MANAG

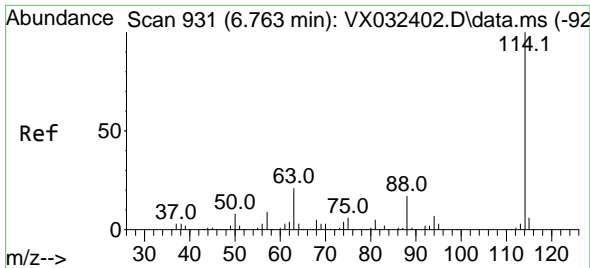
Tgt Ion:168 Resp: 111842
 Ion Ratio Lower Upper
 168 100
 99 59.3 46.1 69.1



#33
 1,2-Dichloroethane-d4
 Concen: 49.722 ug/l
 RT: 5.958 min Scan# 799
 Delta R.T. 0.000 min
 Lab File: VX032583.D
 Acq: 04 Nov 2022 17:48

Tgt Ion: 65 Resp: 77269
 Ion Ratio Lower Upper
 65 100
 67 51.3 0.0 101.8



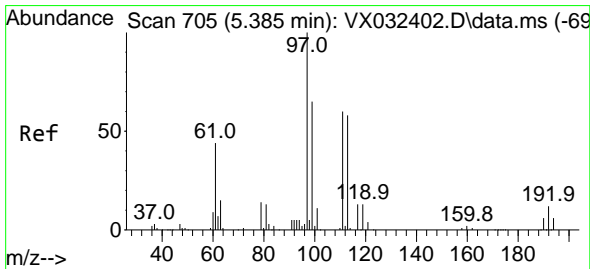
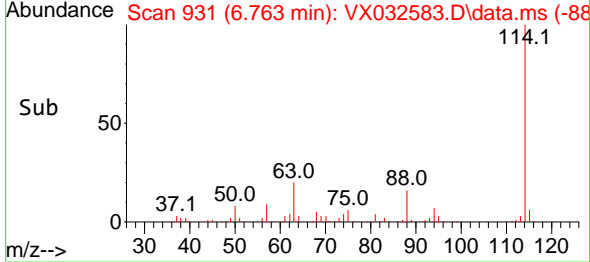
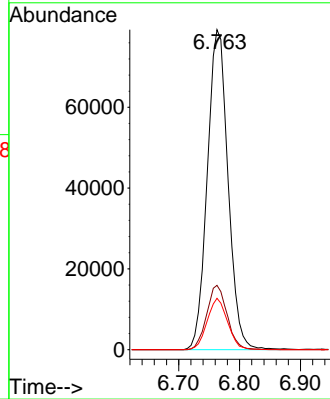
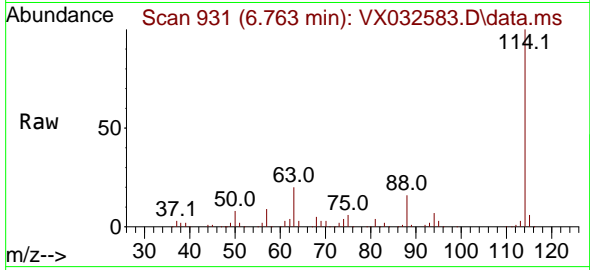


#34
 1,4-Difluorobenzene
 Concen: 50.000 ug/l
 RT: 6.763 min Scan# 911
 Delta R.T. 0.000 min
 Lab File: VX032583.D
 Acq: 04 Nov 2022 17:48

Instrument : MSVOA_X
 ClientSampleId : STORAGE-BLANK-SAMPLE-MANAG

Tgt Ion:114 Resp: 187384

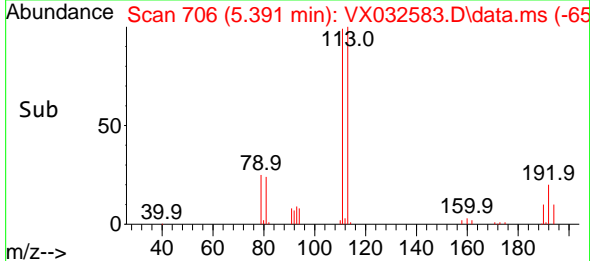
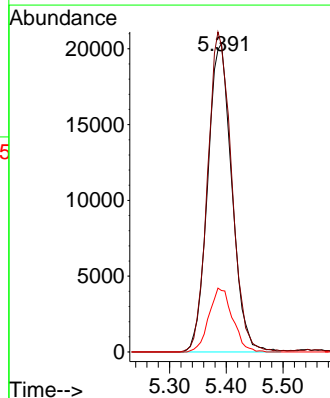
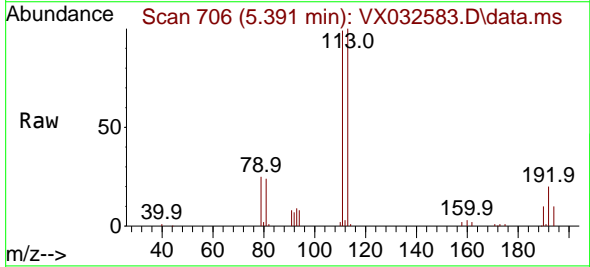
| Ion | Ratio | Lower | Upper |
|-----|-------|-------|-------|
| 114 | 100 | | |
| 63 | 20.1 | 0.0 | 41.6 |
| 88 | 16.0 | 0.0 | 33.4 |

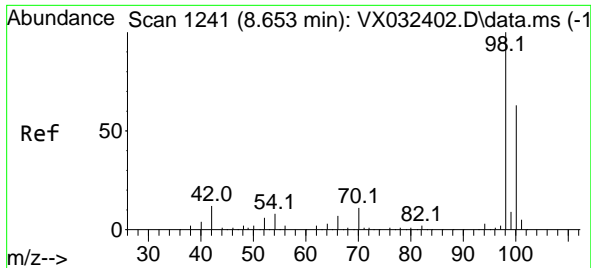


#35
 Dibromofluoromethane
 Concen: 45.084 ug/l
 RT: 5.391 min Scan# 706
 Delta R.T. 0.006 min
 Lab File: VX032583.D
 Acq: 04 Nov 2022 17:48

Tgt Ion:113 Resp: 60260

| Ion | Ratio | Lower | Upper |
|-----|-------|-------|-------|
| 113 | 100 | | |
| 111 | 103.0 | 82.4 | 123.6 |
| 192 | 20.2 | 15.4 | 23.2 |

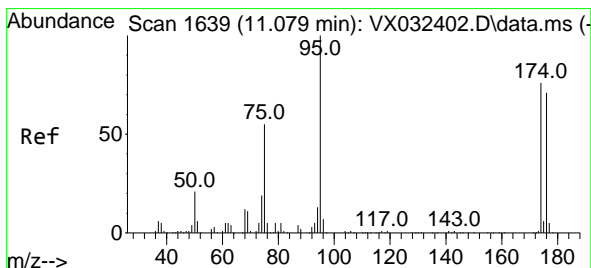
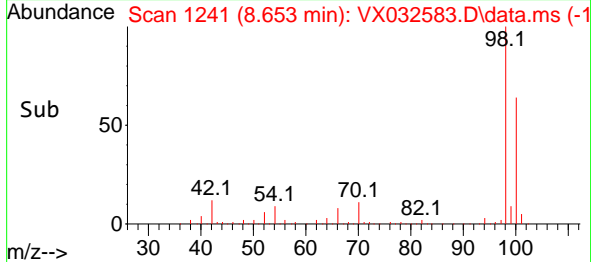
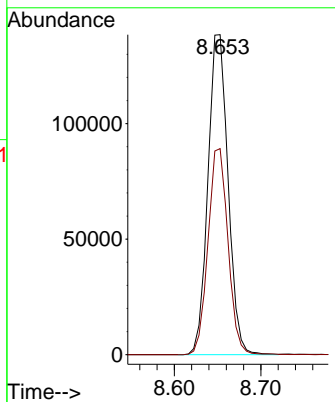
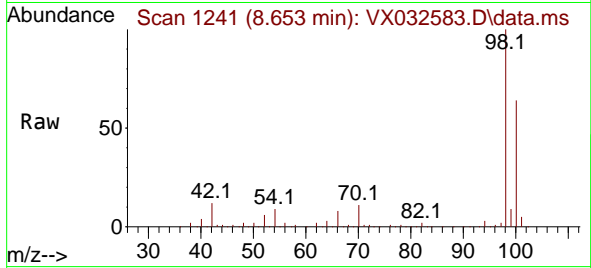




#50
 Toluene-d8
 Concen: 48.104 ug/l
 RT: 8.653 min Scan# 11
 Delta R.T. 0.000 min
 Lab File: VX032583.D
 Acq: 04 Nov 2022 17:48

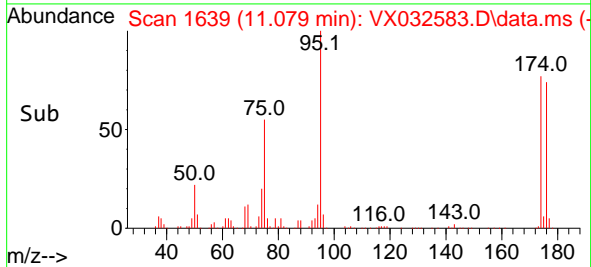
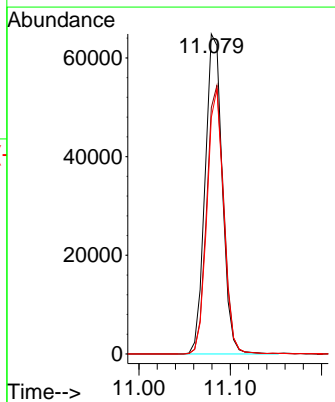
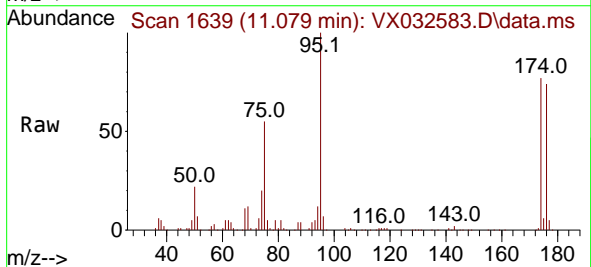
Instrument : MSVOA_X
 ClientSampleId : STORAGE-BLANK-SAMPLE-MANAG

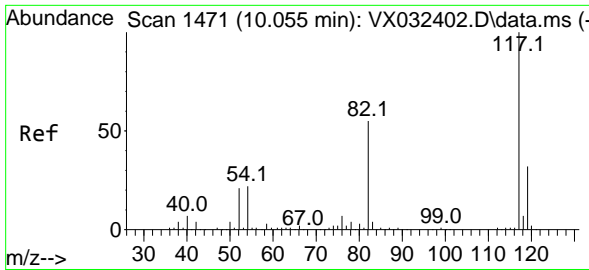
Tgt Ion: 98 Resp: 223576
 Ion Ratio Lower Upper
 98 100
 100 64.0 50.9 76.3



#62
 4-Bromofluorobenzene
 Concen: 46.519 ug/l
 RT: 11.079 min Scan# 1639
 Delta R.T. 0.000 min
 Lab File: VX032583.D
 Acq: 04 Nov 2022 17:48

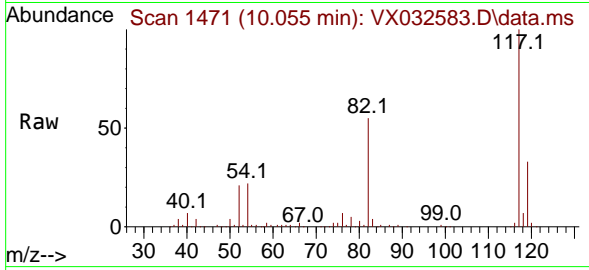
Tgt Ion: 95 Resp: 84457
 Ion Ratio Lower Upper
 95 100
 174 83.7 0.0 164.0
 176 80.5 0.0 154.4



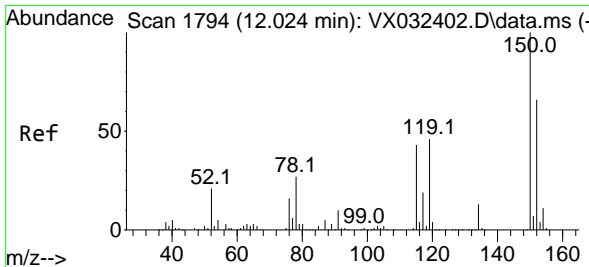
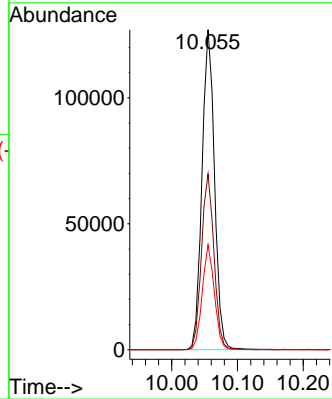
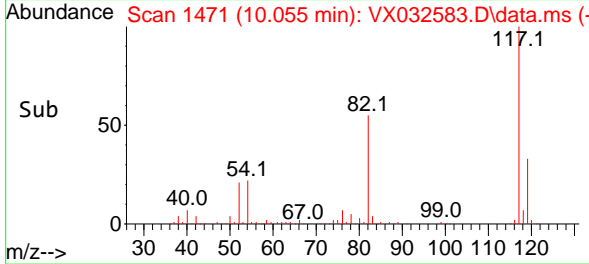


#63
 Chlorobenzene-d5
 Concen: 50.000 ug/l
 RT: 10.055 min Scan# 1471
 Delta R.T. 0.000 min
 Lab File: VX032583.D
 Acq: 04 Nov 2022 17:48

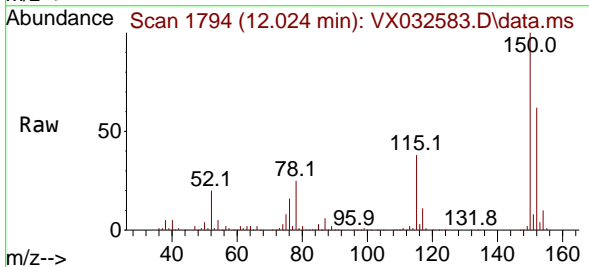
Instrument : MSVOA_X
ClientSampleId : STORAGE-BLANK-SAMPLE-MANAG



Tgt Ion:117 Resp: 167743
 Ion Ratio Lower Upper
 117 100
 82 54.9 44.3 66.5
 119 32.8 25.7 38.5



#72
 1,4-Dichlorobenzene-d4
 Concen: 50.000 ug/l
 RT: 12.024 min Scan# 1794
 Delta R.T. 0.000 min
 Lab File: VX032583.D
 Acq: 04 Nov 2022 17:48



Tgt Ion:152 Resp: 76656
 Ion Ratio Lower Upper
 152 100
 115 60.3 44.0 132.0
 150 157.7 0.0 351.8

