

Data Path : Z:\voasrv\HPCHEM1\MSVOA_X\Data\VX110424\
 Data File : VX043679.D
 Acq On : 04 Nov 2024 13:04
 Operator : JC/MD
 Sample : VI BLK
 Misc : 5.0mL/MSVOA_X/WATER
 ALS Vial : 1 Sample Multiplier: 1

Instrument :
 MSVOA_X
 ClientSampleId :

Quant Time: Nov 05 03:37:19 2024
 Quant Method : Z:\voasrv\HPCHEM1\MSVOA_X\Method\SFAMXLM110424WMA.M
 Quant Title : VOC Analysis
 QLast Update : Tue Nov 05 03:28:26 2024
 Response via : Initial Calibration

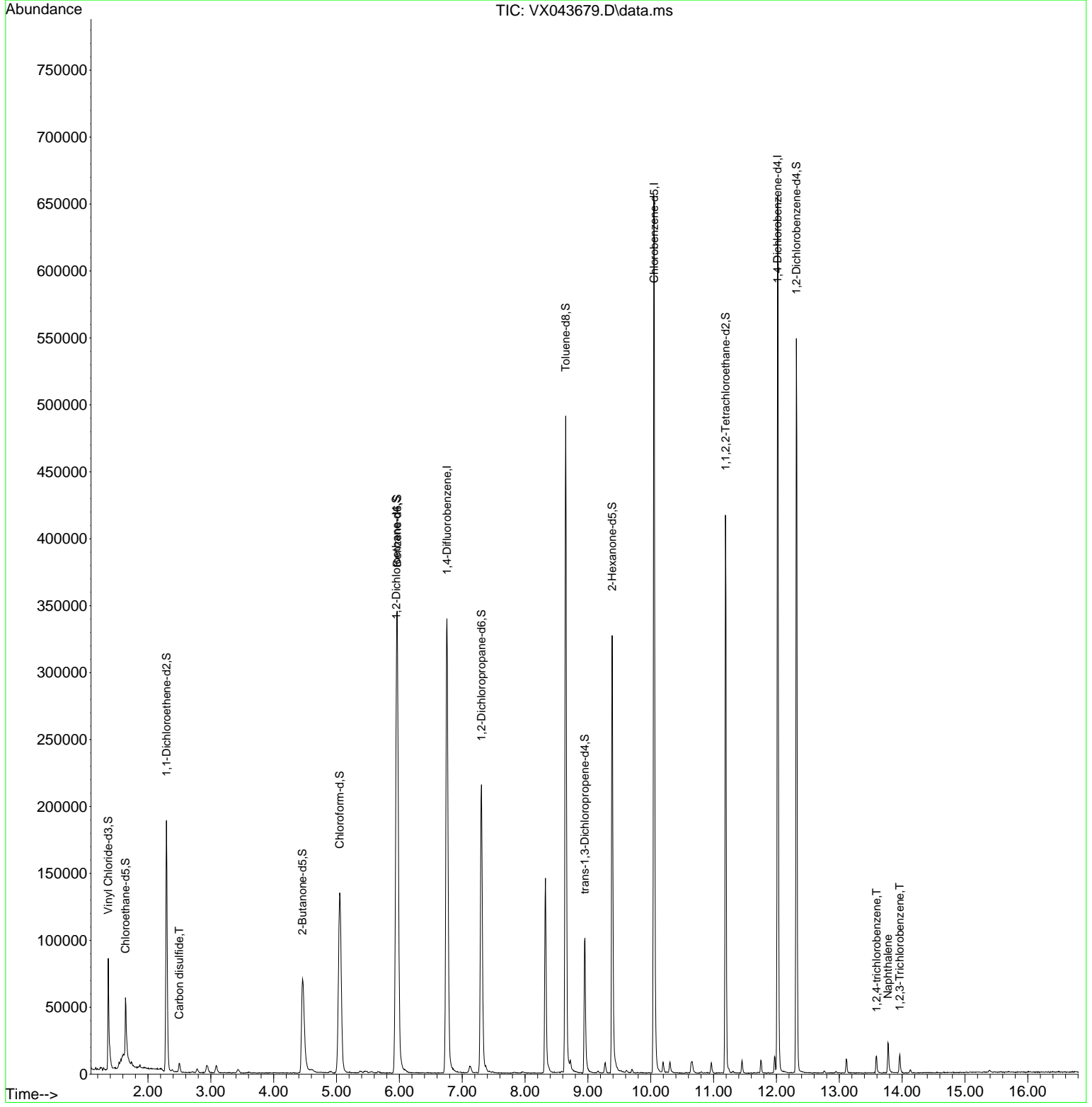
Compound	R.T.	QI on	Response	Conc	Units	Dev(Min)
Internal Standards						
1) 1,4-Difluorobenzene	6.757	114	371559	50.000	ug/L	0.00
28) Chlorobenzene-d5	10.055	117	311611	50.000	ug/L	0.00
58) 1,4-Dichlorobenzene-d4	12.018	152	135983	50.000	ug/L	0.00
System Monitoring Compounds						
4) Vinyl Chloride-d3	1.368	65	63251	31.954	ug/L	0.00
Spike Amount	50.000	Range	60 - 135	Recovery	=	63.900%
7) Chloroethane-d5	1.642	69	32062	37.683	ug/L	0.00
Spike Amount	50.000	Range	70 - 130	Recovery	=	75.360%
11) 1,1-Dichloroethene-d2	2.294	65	31685	34.675	ug/L	0.00
Spike Amount	50.000	Range	60 - 125	Recovery	=	69.340%
21) 2-Butanone-d5	4.459	46	132095	101.922	ug/L	0.00
Spike Amount	100.000	Range	40 - 130	Recovery	=	101.920%
24) Chloroform-d	5.050	84	177981	41.709	ug/L	0.00
Spike Amount	50.000	Range	70 - 125	Recovery	=	83.420%
26) 1,2-Dichloroethane-d4	5.952	65	119570	44.109	ug/L	0.00
Spike Amount	50.000	Range	70 - 125	Recovery	=	88.220%
32) Benzene-d6	5.964	84	343334	42.616	ug/L	0.00
Spike Amount	50.000	Range	70 - 125	Recovery	=	85.240%
36) 1,2-Dichloropropane-d6	7.306	67	111247	45.387	ug/L	0.00
Spike Amount	50.000	Range	70 - 120	Recovery	=	90.780%
41) Toluene-d8	8.647	98	304970	41.671	ug/L	0.00
Spike Amount	50.000	Range	80 - 120	Recovery	=	83.340%
43) trans-1,3-Dichloropropene	8.952	79	52271	44.593	ug/L	0.00
Spike Amount	50.000	Range	60 - 125	Recovery	=	89.180%
47) 2-Hexanone-d5	9.385	63	99780	102.865	ug/L	0.00
Spike Amount	100.000	Range	45 - 130	Recovery	=	102.860%
56) 1,1,2,2-Tetrachloroethene	11.189	84	157461	50.069	ug/L	0.00
Spike Amount	50.000	Range	65 - 120	Recovery	=	100.140%
66) 1,2-Dichlorobenzene-d4	12.317	152	113704	48.260	ug/L	0.00
Spike Amount	50.000	Range	80 - 120	Recovery	=	96.520%
Target Compounds						
14) Carbon disulfide	2.496	76	8299	1.894	ug/L	98
70) 1,2,4-trichlorobenzene	13.591	180	3687	1.454	ug/L	98
71) Naphthalene	13.774	128	16181	1.718	ug/L	98
72) 1,2,3-Trichlorobenzene	13.963	180	3986	1.521	ug/L	97

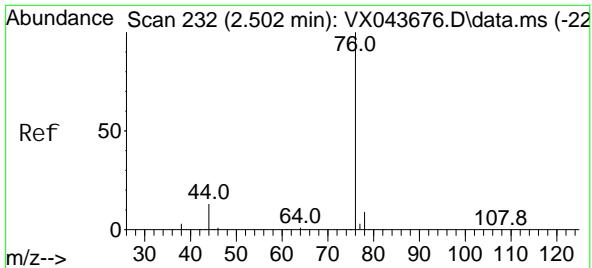
(#) = qualifier out of range (m) = manual integration (+) = signals summed

Data Path : Z:\voasrv\HPCHEM1\MSVOA_X\Data\VX110424\
 Data File : VX043679.D
 Acq On : 04 Nov 2024 13:04
 Operator : JC/MD
 Sample : VI BLK
 Misc : 5.0mL/MSVOA_X/WATER
 ALS Vial : 1 Sample Multiplier: 1

Instrument :
 MSVOA_X
 ClientSampleId :

Quant Time: Nov 05 03:37:19 2024
 Quant Method : Z:\voasrv\HPCHEM1\MSVOA_X\Method\SFAMXLM110424WMA.M
 Quant Title : VOC Analysis
 QLast Update : Tue Nov 05 03:28:26 2024
 Response via : Initial Calibration

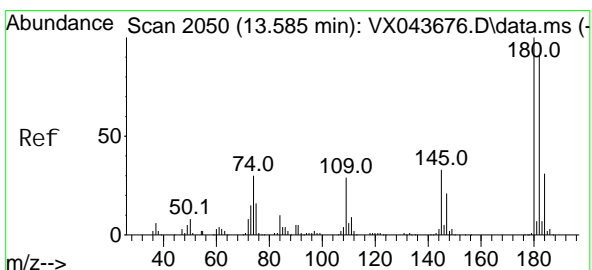
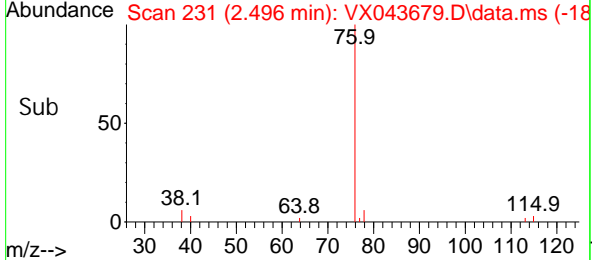
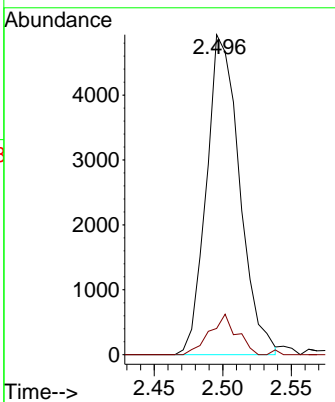
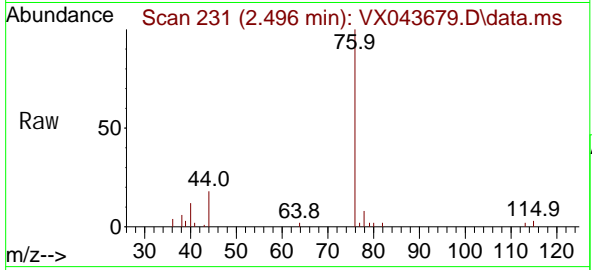




#14
 Carbon di sul fi de
 Concen: 1.894 ug/L
 RT: 2.496 min Scan# 21
 Delta R.T. -0.006 min
 Lab File: VX043679.D
 Acq: 04 Nov 2024 13:04

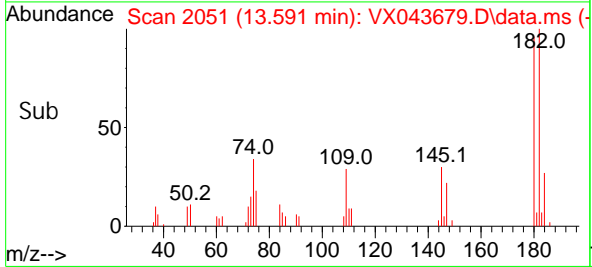
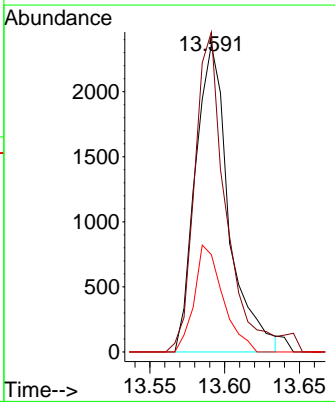
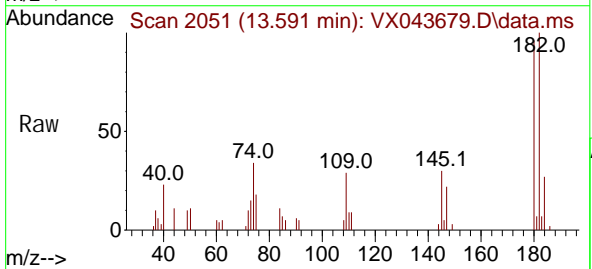
Instrument : MSVOA_X
 ClientSampleId :

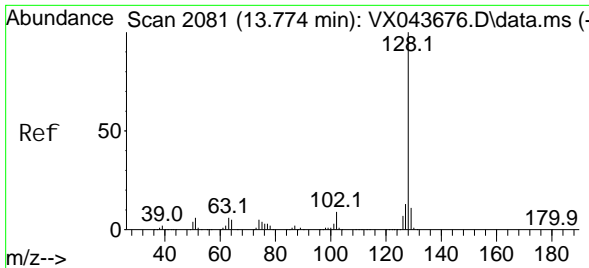
Tgt Ion: 76 Resp: 8299
 Ion Ratio Lower Upper
 76 100
 78 8.2 7.3 10.9



#70
 1, 2, 4-tri chlorobenzene
 Concen: 1.454 ug/L
 RT: 13.591 min Scan# 2051
 Delta R.T. 0.006 min
 Lab File: VX043679.D
 Acq: 04 Nov 2024 13:04

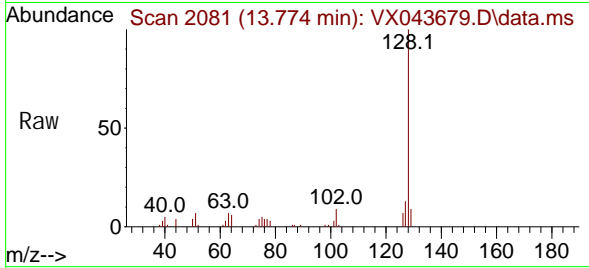
Tgt Ion: 180 Resp: 3687
 Ion Ratio Lower Upper
 180 100
 182 95.3 75.9 113.9
 145 29.7 26.9 40.3



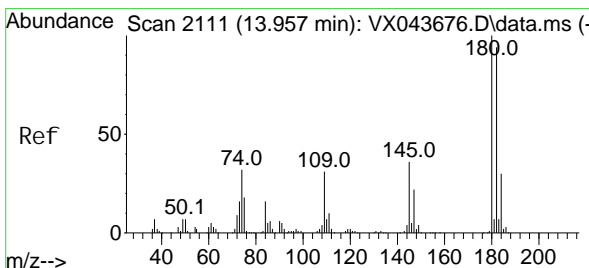
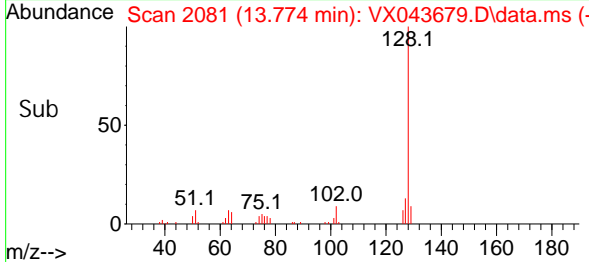
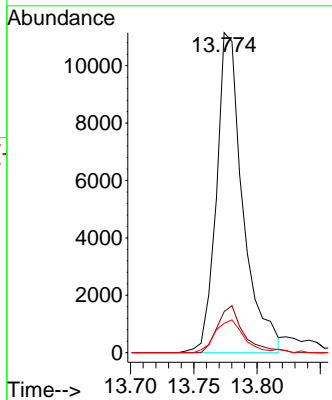


#71
 Naphthalene
 Concen: 1.718 ug/L
 RT: 13.774 min Scan# 2081
 Delta R.T. -0.000 min
 Lab File: VX043679.D
 Acq: 04 Nov 2024 13:04

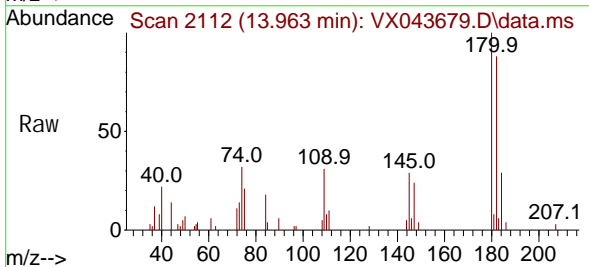
Instrument : MSVOA_X
 ClientSampleId :



Tgt Ion: 128 Resp: 16181
 Ion Ratio Lower Upper
 128 100
 127 14.4 10.2 15.2
 129 11.1 8.8 13.2



#72
 1,2,3-Trichlorobenzene
 Concen: 1.521 ug/L
 RT: 13.963 min Scan# 2112
 Delta R.T. 0.006 min
 Lab File: VX043679.D
 Acq: 04 Nov 2024 13:04



Tgt Ion: 180 Resp: 3986
 Ion Ratio Lower Upper
 180 100
 182 93.4 75.8 113.8
 145 31.5 28.4 42.6

