

Data Path : Z:\voasrv\HPCHEM1\MSVOA_X\Data\VX110424\
 Data File : VX043697.D
 Acq On : 04 Nov 2024 20:56
 Operator : JC/MD
 Sample : P4621-02
 Misc : 5.0mL/MSVOA_X/WATER
 ALS Vial : 29 Sample Multiplier: 1

Instrument :
 MSVOA_X
 ClientSampleId :
 BH6M8

Quant Time: Nov 05 03:50:06 2024
 Quant Method : Z:\voasrv\HPCHEM1\MSVOA_X\Method\SFAMXLM110424WMA.M
 Quant Title : VOC Analysis
 QLast Update : Tue Nov 05 03:44:12 2024
 Response via : Initial Calibration

Compound	R.T.	QIon	Response	Conc	Units	Dev(Min)

Internal Standards						
1) 1,4-Difluorobenzene	6.757	114	285194	50.000	ug/L	0.00
28) Chlorobenzene-d5	10.055	117	264349	50.000	ug/L	0.00
58) 1,4-Dichlorobenzene-d4	12.018	152	123903	50.000	ug/L	0.00
System Monitoring Compounds						
4) Vinyl Chloride-d3	1.368	65	64653	42.554	ug/L	0.00
Spiked Amount	50.000	Range 60 - 135	Recovery =	85.100%		
7) Chloroethane-d5	1.642	69	32455	49.696	ug/L	0.00
Spiked Amount	50.000	Range 70 - 130	Recovery =	99.400%		
11) 1,1-Dichloroethene-d2	2.294	65	28482	40.609	ug/L	0.00
Spiked Amount	50.000	Range 60 - 125	Recovery =	81.220%		
21) 2-Butanone-d5	4.465	46	110299	110.877	ug/L	0.00
Spiked Amount	100.000	Range 40 - 130	Recovery =	110.880%		
24) Chloroform-d	5.056	84	153423	46.842	ug/L	0.00
Spiked Amount	50.000	Range 70 - 125	Recovery =	93.680%		
26) 1,2-Dichloroethane-d4	5.952	65	100571	48.335	ug/L	0.00
Spiked Amount	50.000	Range 70 - 125	Recovery =	96.660%		
32) Benzene-d6	5.970	84	310781	45.472	ug/L	0.00
Spiked Amount	50.000	Range 70 - 125	Recovery =	90.940%		
36) 1,2-Dichloropropane-d6	7.306	67	99124	47.672	ug/L	0.00
Spiked Amount	50.000	Range 70 - 120	Recovery =	95.340%		
41) Toluene-d8	8.647	98	278337	44.831	ug/L	0.00
Spiked Amount	50.000	Range 80 - 120	Recovery =	89.660%		
43) trans-1,3-Dichloroprop...	8.952	79	46245	46.506	ug/L	0.00
Spiked Amount	50.000	Range 60 - 125	Recovery =	93.020%		
47) 2-Hexanone-d5	9.384	63	87256	106.036	ug/L	0.00
Spiked Amount	100.000	Range 45 - 130	Recovery =	106.040%		
56) 1,1,2,2-Tetrachloroeth...	11.189	84	129922	48.699	ug/L	0.00
Spiked Amount	50.000	Range 65 - 120	Recovery =	97.400%		
66) 1,2-Dichlorobenzene-d4	12.317	152	108576	50.577	ug/L	0.00
Spiked Amount	50.000	Range 80 - 120	Recovery =	101.160%		
Target Compounds						
						Qvalue
2) Dichlorodifluoromethane	1.166	85	60730	30.235	ug/L	98
3) Chloromethane	1.294	50	98978	50.705	ug/L	96
5) Vinyl chloride	1.374	62	84304	44.090	ug/L	99
6) Bromomethane	1.593	94	38488	51.944	ug/L	95
8) Chloroethane	1.666	64	36864	54.797	ug/L	100
9) Trichlorofluoromethane	1.867	101	86138	35.499	ug/L	99
10) 1,1,2-Trichloro-1,2,2-...	2.312	101	55186	33.115	ug/L	99
12) 1,1-Dichloroethene	2.306	96	67397	44.301	ug/L	86
13) Acetone	2.386	43	119560	129.223	ug/L	98
14) Carbon disulfide	2.501	76	135875	40.402	ug/L	99
15) Methyl Acetate	2.709	43	79133	40.448	ug/L	97
16) Methylene chloride	2.782	84	100679	54.777	ug/L	97
17) trans-1,2-Dichloroethene	3.081	96	77026	47.062	ug/L	98
18) Methyl tert-butyl Ether	3.117	73	335680	53.952	ug/L	99
19) 1,1-Dichloroethane	3.605	63	160047	49.659	ug/L	97
20) cis-1,2-Dichloroethene	4.483	96	105067	51.684	ug/L	98
22) 2-Butanone	4.562	43	159522	119.175	ug/L	100
23) Bromochloromethane	4.891	128	57031	55.811	ug/L	94
25) Chloroform	5.086	83	186600	53.954	ug/L	98

Data Path : Z:\voasrv\HPCHEM1\MSVOA_X\Data\VX110424\
 Data File : VX043697.D
 Acq On : 04 Nov 2024 20:56
 Operator : JC/MD
 Sample : P4621-02
 Misc : 5.0mL/MSVOA_X/WATER
 ALS Vial : 29 Sample Multiplier: 1

Instrument :
 MSVOA_X
 ClientSampleId :
 BH6M8

Quant Time: Nov 05 03:50:06 2024
 Quant Method : Z:\voasrv\HPCHEM1\MSVOA_X\Method\SFAMXLM110424WMA.M
 Quant Title : VOC Analysis
 QLast Update : Tue Nov 05 03:44:12 2024
 Response via : Initial Calibration

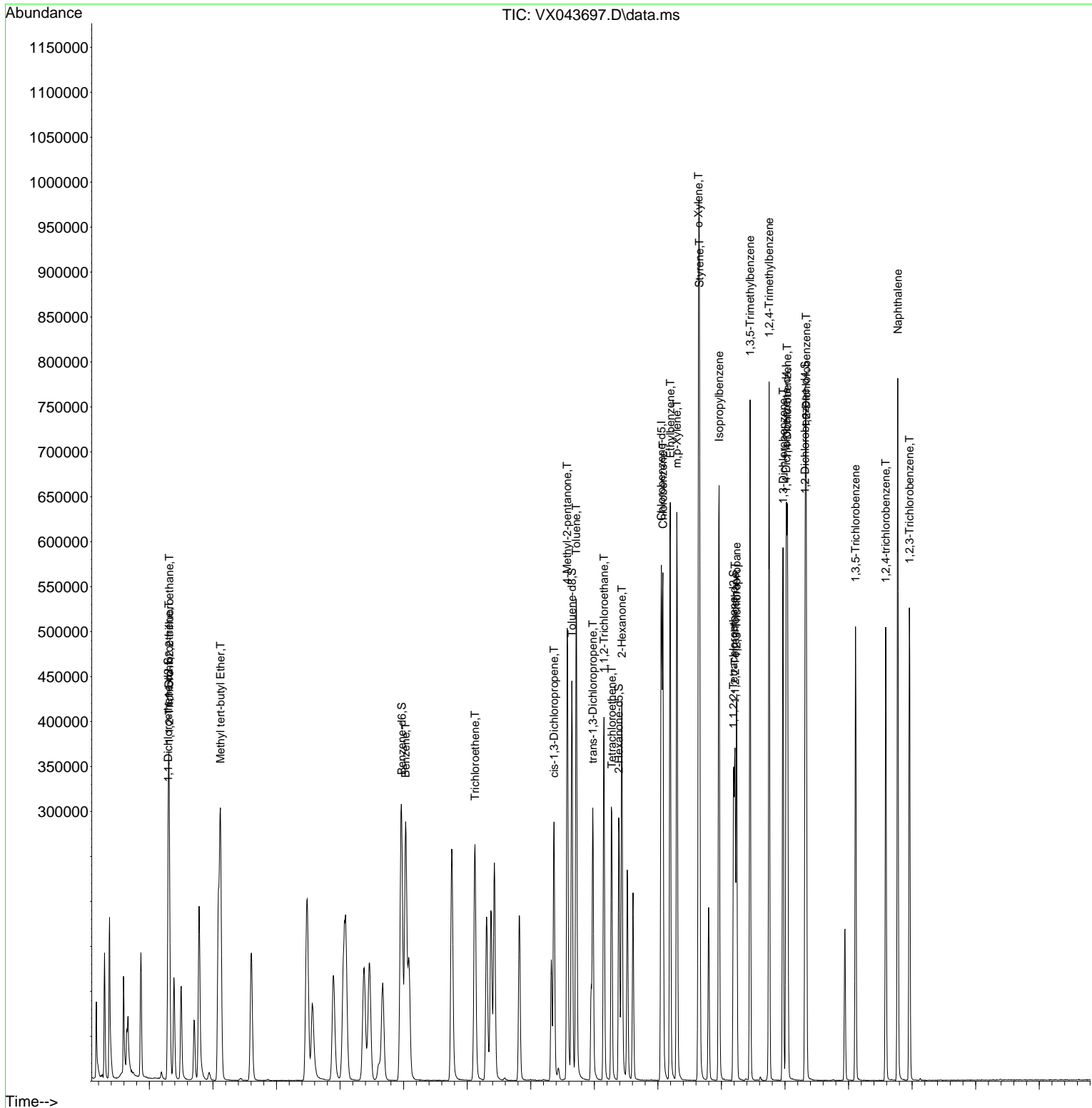
Compound	R.T.	QIon	Response	Conc	Units	Dev(Min)
27) 1,2-Dichloroethane	6.086	62	139399	52.164	ug/L	98
29) Cyclohexane	5.464	56	93713	30.552	ug/L	98
30) 1,1,1-Trichloroethane	5.379	97	130393	40.718	ug/L	98
31) Carbon tetrachloride	5.672	117	98331	37.429	ug/L	99
33) Benzene	6.031	78	362041	48.048	ug/L	100
34) Trichloroethene	7.123	95	102744	50.720	ug/L	98
35) Methylcyclohexane	7.373	83	91216	30.139	ug/L	98
37) 1,2-Dichloropropane	7.427	63	101822	50.731	ug/L	100
38) Bromodichloromethane	7.818	83	124550	48.788	ug/L	99
39) cis-1,3-Dichloropropene	8.366	75	159645	48.722	ug/L	99
40) 4-Methyl-2-pentanone	8.574	43	308617	112.969	ug/L	98
42) Toluene	8.714	91	367833	46.413	ug/L	100
44) trans-1,3-Dichloropropene	8.976	75	147499	49.367	ug/L	99
45) 1,1,2-Trichloroethane	9.153	97	111125	53.992	ug/L	99
46) Tetrachloroethene	9.275	164	60610	41.568	ug/L	95
48) 2-Hexanone	9.433	43	236607	115.867	ug/L	98
49) Dibromochloromethane	9.519	129	101701	53.014	ug/L	99
50) 1,2-Dibromoethane	9.610	107	115481	54.342	ug/L	97
51) Chlorobenzene	10.079	112	256953	49.610	ug/L	99
52) Ethylbenzene	10.195	91	391879	45.491	ug/L	99
53) m,p-Xylene	10.299	106	154772	46.542	ug/L	99
54) o-Xylene	10.640	106	163860	49.426	ug/L	95
55) Styrene	10.652	104	286685	51.984	ug/L	99
57) 1,1,2,2-Tetrachloroethane	11.213	83	140124	45.457	ug/L	100
59) Bromoform	10.799	173	69085	53.306	ug/L	96
60) Isopropylbenzene	10.963	105	370584	43.135	ug/L	99
61) 1,2,3-Trichloropropane	11.238	75	134065	55.743	ug/L	99
62) 1,3,5-Trimethylbenzene	11.451	105	326333	45.190	ug/L	100
63) 1,2,4-Trimethylbenzene	11.750	105	334346	46.501	ug/L	97
64) 1,3-Dichlorobenzene	11.969	146	189608	50.174	ug/L	100
65) 1,4-Dichlorobenzene	12.036	146	190210	49.973	ug/L	97
67) 1,2-Dichlorobenzene	12.335	146	201494	52.176	ug/L	99
68) 1,2-Dibromo-3-chloropr...	12.939	75	32711	54.316	ug/L	98
69) 1,3,5-Trichlorobenzene	13.109	180	119313	47.338	ug/L	99
70) 1,2,4-trichlorobenzene	13.585	180	116179	50.272	ug/L	99
71) Naphthalene	13.774	128	465222	54.209	ug/L	100
72) 1,2,3-Trichlorobenzene	13.957	180	124616	52.175	ug/L	98

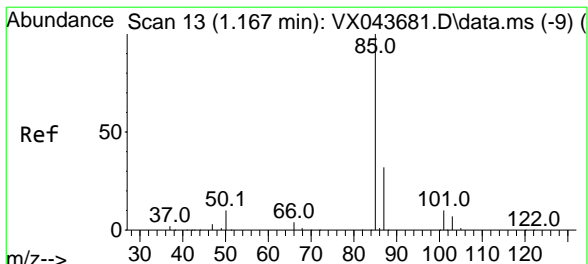
(#) = qualifier out of range (m) = manual integration (+) = signals summed

Data Path : Z:\voasrv\HPCHEM1\MSVOA_X\Data\VX110424\
 Data File : VX043697.D
 Acq On : 04 Nov 2024 20:56
 Operator : JC/MD
 Sample : P4621-02
 Misc : 5.0mL/MSVOA_X/WATER
 ALS Vial : 29 Sample Multiplier: 1

Instrument :
 MSVOA_X
 ClientSampleId :
 BH6M8

Quant Time: Nov 05 03:50:06 2024
 Quant Method : Z:\voasrv\HPCHEM1\MSVOA_X\Method\SFAMXLM110424WMA.M
 Quant Title : VOC Analysis
 QLast Update : Tue Nov 05 03:44:12 2024
 Response via : Initial Calibration

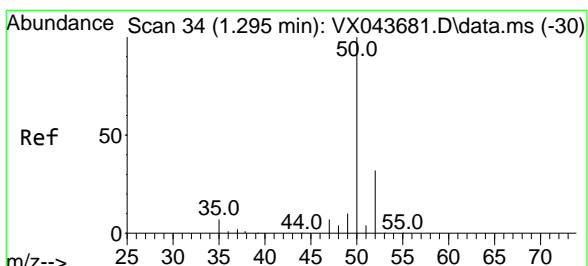
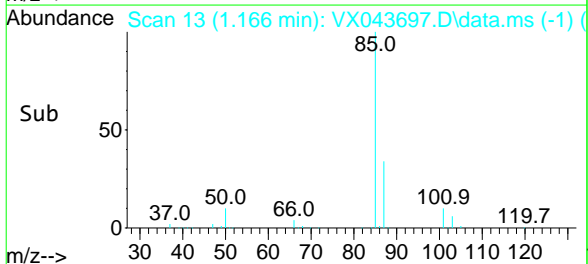
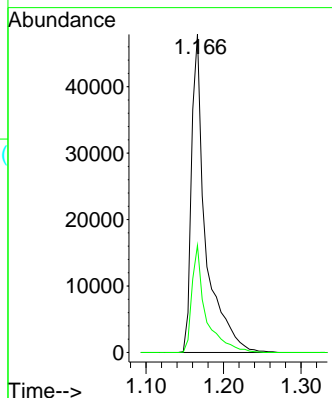
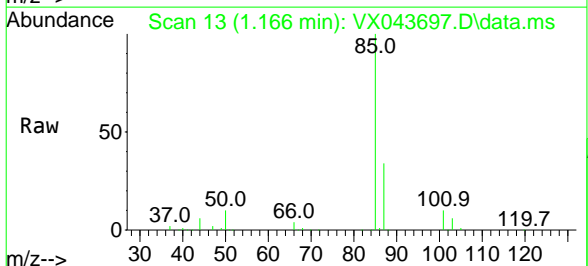




#2
 Dichlorodifluoromethane
 Concen: 30.235 ug/L
 RT: 1.166 min Scan# 13
 Delta R.T. -0.000 min
 Lab File: VX043697.D
 Acq: 04 Nov 2024 20:56

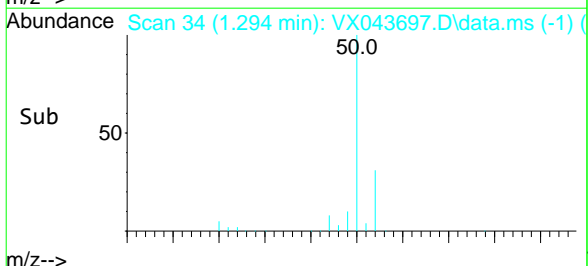
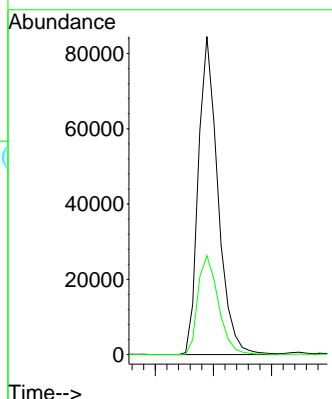
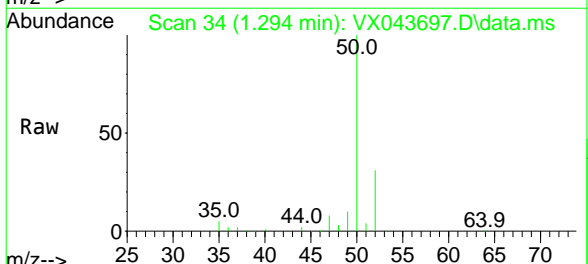
Instrument :
 MSVOA_X
 ClientSampleId :
 BH6M8

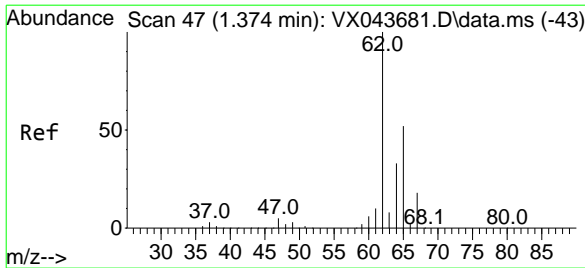
Tgt Ion: 85 Resp: 60730
 Ion Ratio Lower Upper
 85 100
 87 33.0 25.6 38.4



#3
 Chloromethane
 Concen: 50.705 ug/L
 RT: 1.294 min Scan# 34
 Delta R.T. -0.000 min
 Lab File: VX043697.D
 Acq: 04 Nov 2024 20:56

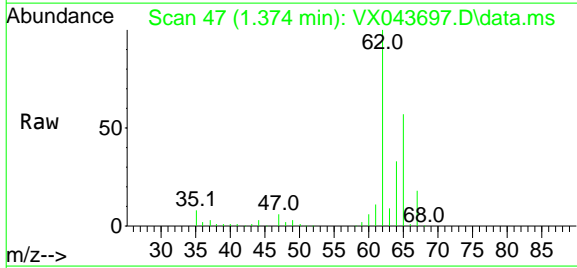
Tgt Ion: 50 Resp: 98978
 Ion Ratio Lower Upper
 50 100
 52 31.1 23.4 43.4



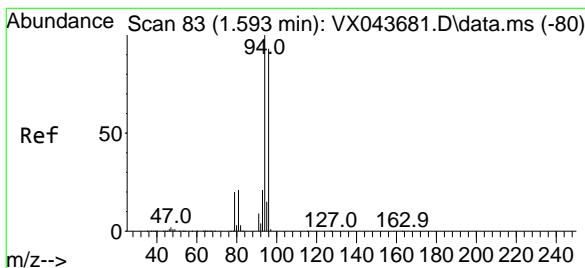
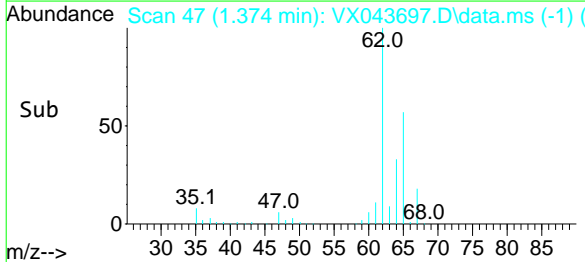
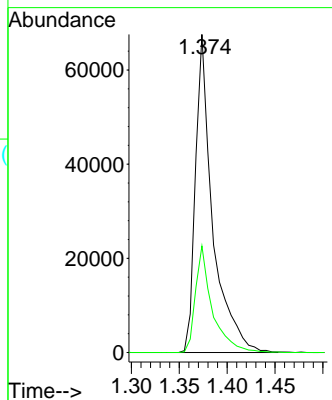


#5
 Vinyl chloride
 Concen: 44.090 ug/L
 RT: 1.374 min Scan# 47
 Delta R.T. -0.000 min
 Lab File: VX043697.D
 Acq: 04 Nov 2024 20:56

Instrument :
 MSVOA_X
 ClientSampleId :
 BH6M8

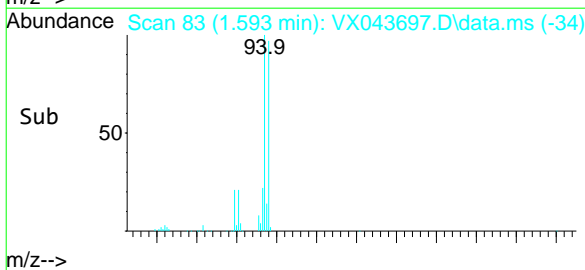
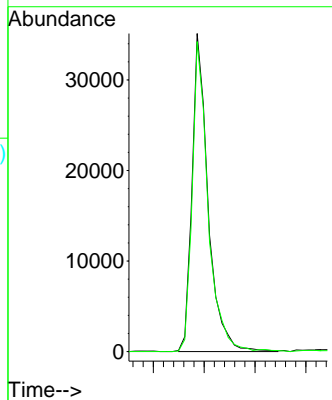
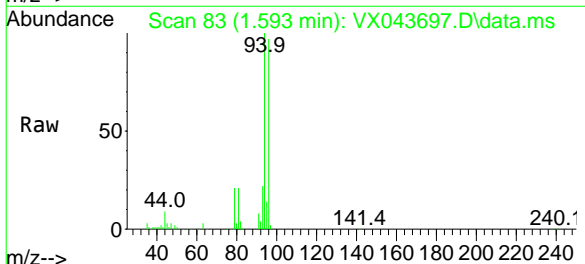


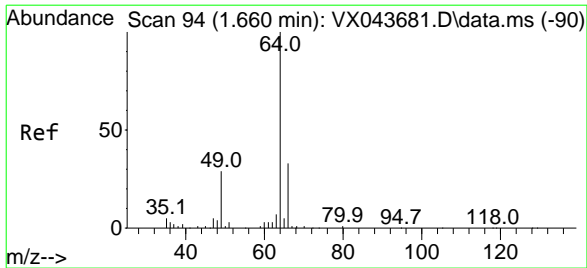
Tgt Ion: 62 Resp: 84304
 Ion Ratio Lower Upper
 62 100
 64 33.5 24.0 44.6



#6
 Bromomethane
 Concen: 51.944 ug/L
 RT: 1.593 min Scan# 83
 Delta R.T. -0.000 min
 Lab File: VX043697.D
 Acq: 04 Nov 2024 20:56

Tgt Ion: 94 Resp: 38488
 Ion Ratio Lower Upper
 94 100
 96 97.5 65.0 120.8

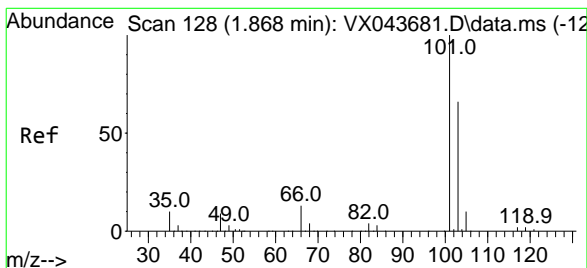
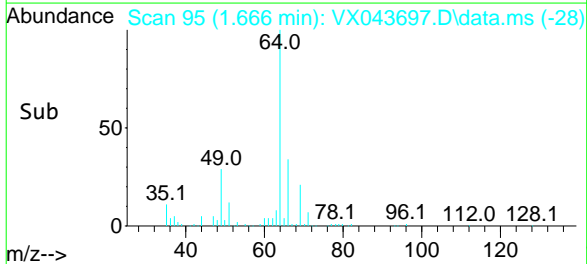
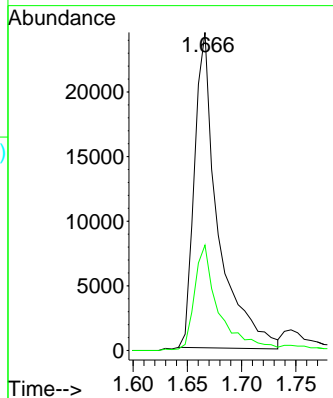
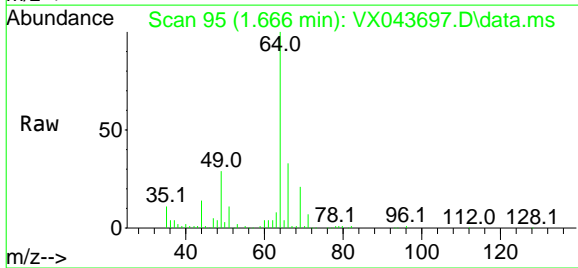




#8
 Chloroethane
 Concen: 54.797 ug/L
 RT: 1.666 min Scan# 95
 Delta R.T. 0.006 min
 Lab File: VX043697.D
 Acq: 04 Nov 2024 20:56

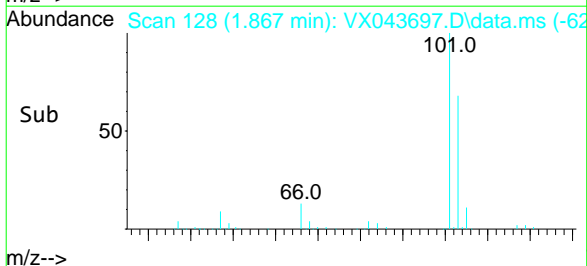
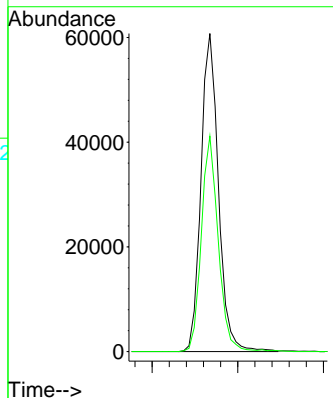
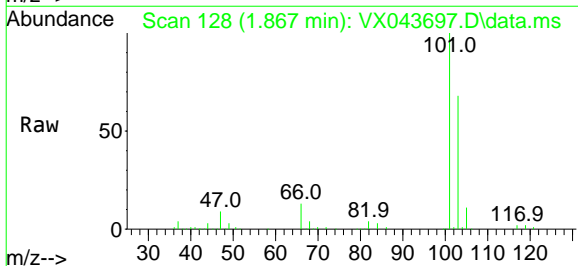
Instrument :
 MSVOA_X
 ClientSampleId :
 BH6M8

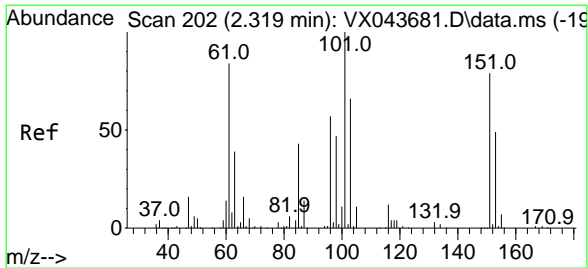
Tgt Ion: 64 Resp: 36864
 Ion Ratio Lower Upper
 64 100
 66 33.1 23.2 43.2



#9
 Trichlorofluoromethane
 Concen: 35.499 ug/L
 RT: 1.867 min Scan# 128
 Delta R.T. -0.000 min
 Lab File: VX043697.D
 Acq: 04 Nov 2024 20:56

Tgt Ion: 101 Resp: 86138
 Ion Ratio Lower Upper
 101 100
 103 65.1 51.6 77.4

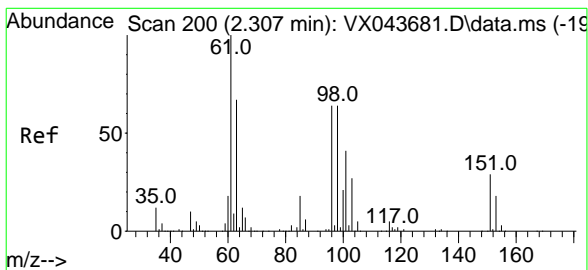
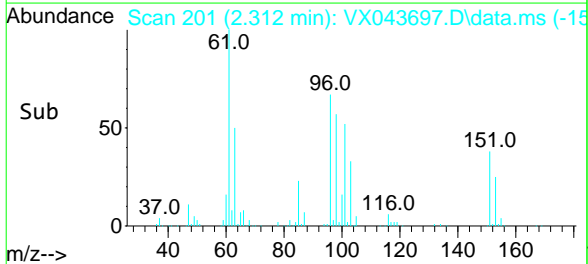
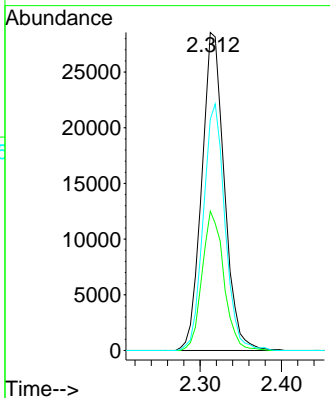
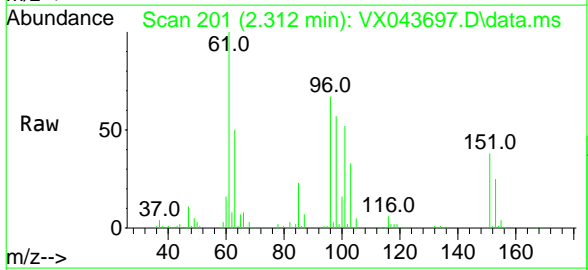




#10
 1,1,2-Trichloro-1,2,2-trifluoroethane
 Concen: 33.115 ug/L
 RT: 2.312 min Scan# 200
 Delta R.T. -0.006 min
 Lab File: VX043697.D
 Acq: 04 Nov 2024 20:56

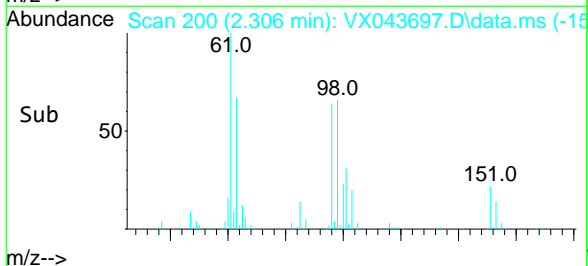
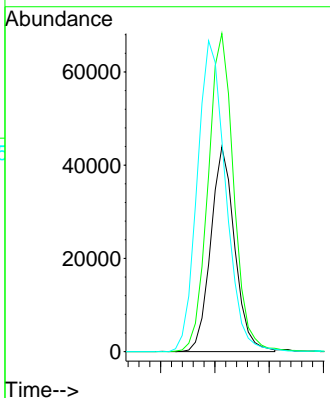
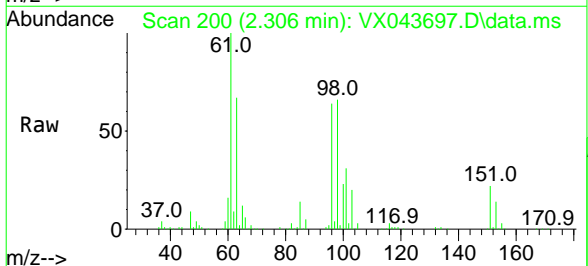
Instrument :
 MSVOA_X
 ClientSampleId :
 BH6M8

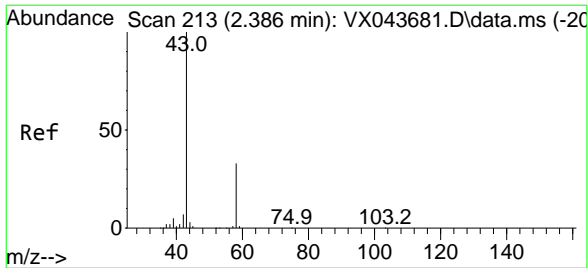
Tgt Ion	Ratio	Lower	Upper
101	100		
85	41.9	34.0	51.0
151	74.1	60.2	90.4



#12
 1,1-Dichloroethene
 Concen: 44.301 ug/L
 RT: 2.306 min Scan# 200
 Delta R.T. -0.000 min
 Lab File: VX043697.D
 Acq: 04 Nov 2024 20:56

Tgt Ion	Ratio	Lower	Upper
96	100		
61	155.4	119.7	222.3
63	103.4	86.5	160.6

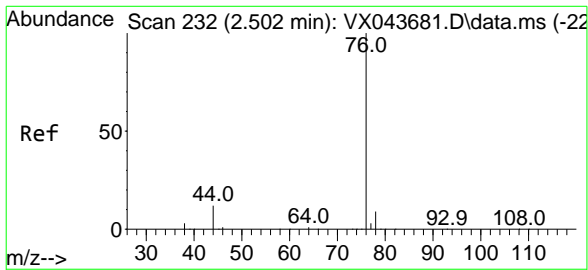
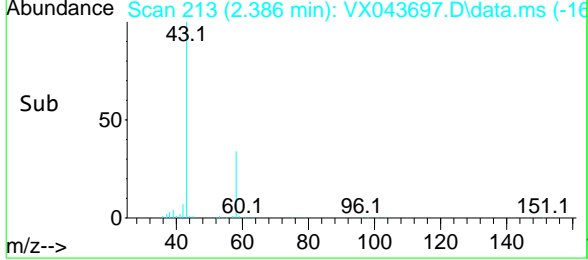
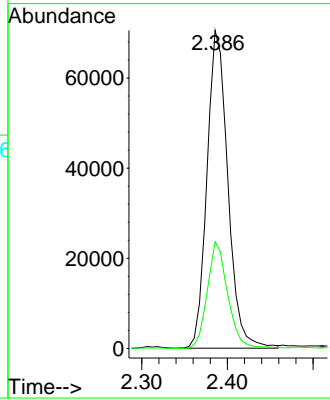
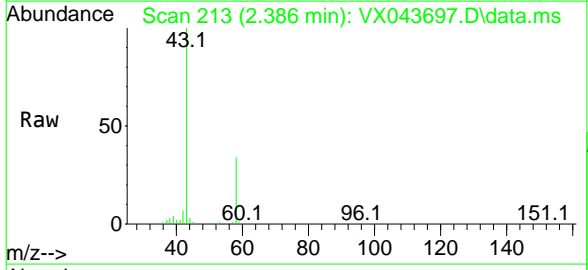




#13
 Acetone
 Concen: 129.223 ug/L
 RT: 2.386 min Scan# 213
 Delta R.T. -0.000 min
 Lab File: VX043697.D
 Acq: 04 Nov 2024 20:56

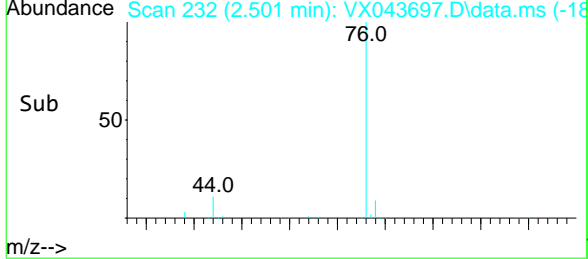
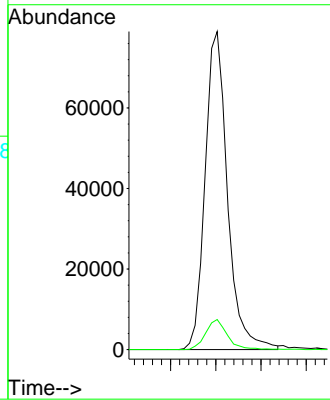
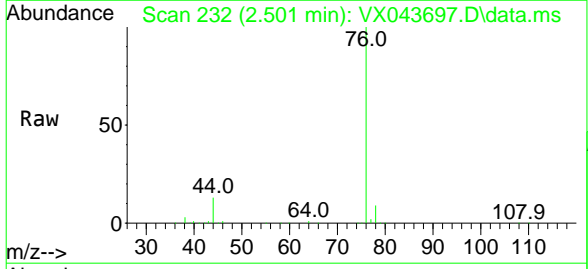
Instrument : MSVOA_X
 ClientSampleId : BH6M8

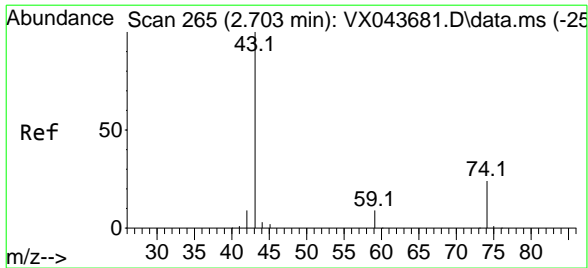
Tgt Ion	Resp	Lower	Upper
43	119560		
58	32.7	0.0	63.6



#14
 Carbon disulfide
 Concen: 40.402 ug/L
 RT: 2.501 min Scan# 232
 Delta R.T. -0.000 min
 Lab File: VX043697.D
 Acq: 04 Nov 2024 20:56

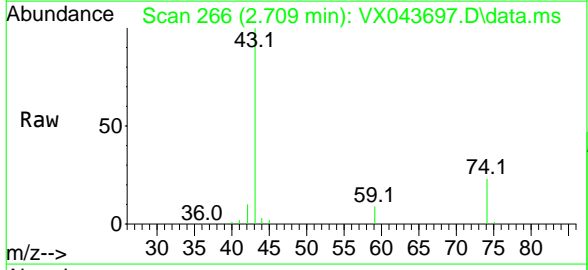
Tgt Ion	Resp	Lower	Upper
76	135875		
78	9.5	7.3	10.9



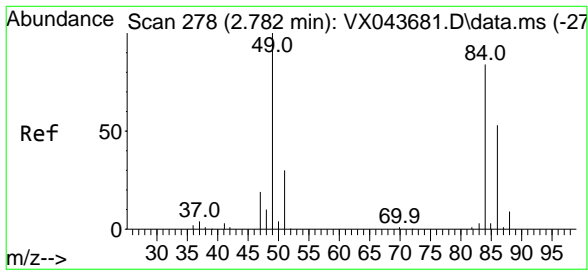
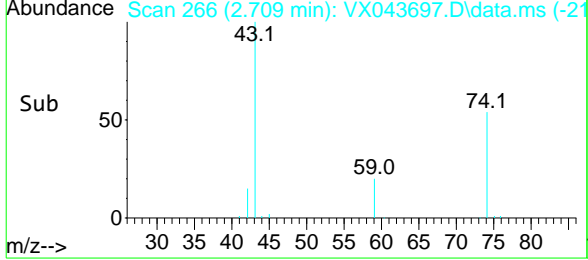
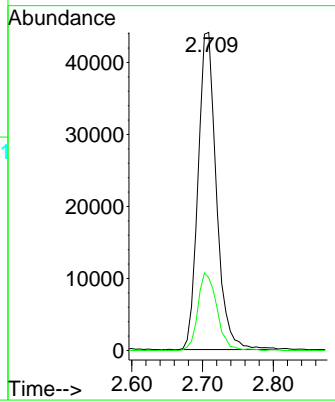


#15
 Methyl Acetate
 Concen: 40.448 ug/L
 RT: 2.709 min Scan# 266
 Delta R.T. 0.006 min
 Lab File: VX043697.D
 Acq: 04 Nov 2024 20:56

Instrument : MSVOA_X
 ClientSampleId : BH6M8

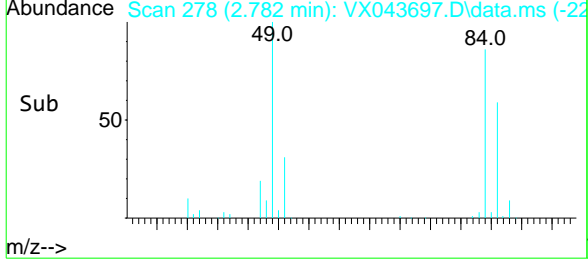
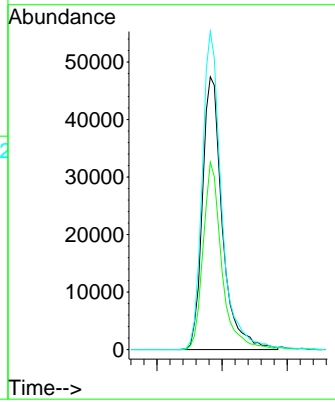
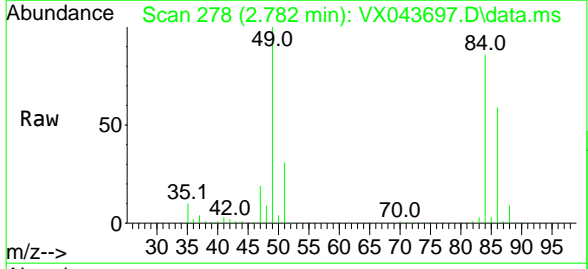


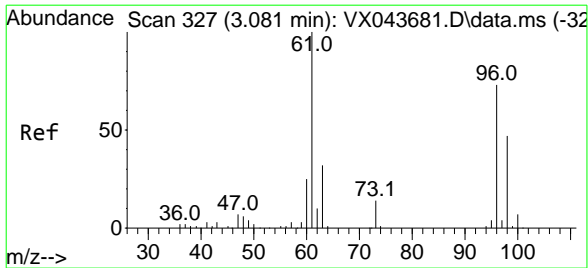
Tgt Ion: 43 Resp: 79133
 Ion Ratio Lower Upper
 43 100
 74 25.3 18.9 28.3



#16
 Methylene chloride
 Concen: 54.777 ug/L
 RT: 2.782 min Scan# 278
 Delta R.T. -0.000 min
 Lab File: VX043697.D
 Acq: 04 Nov 2024 20:56

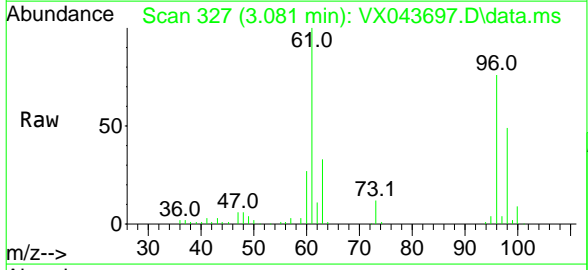
Tgt Ion: 84 Resp: 100679
 Ion Ratio Lower Upper
 84 100
 86 68.7 44.7 83.1
 49 116.6 83.2 154.4





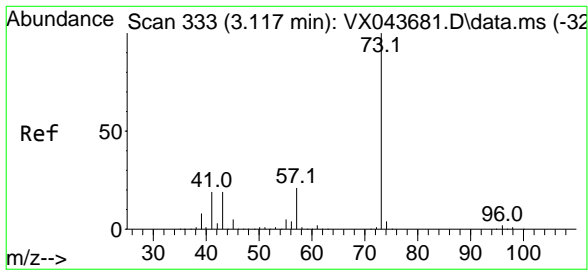
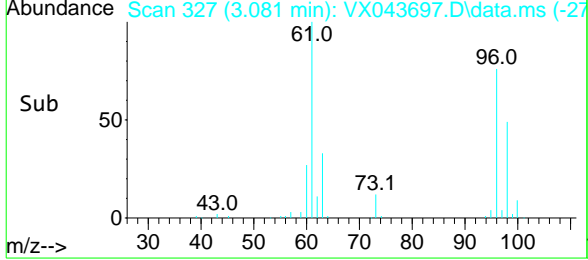
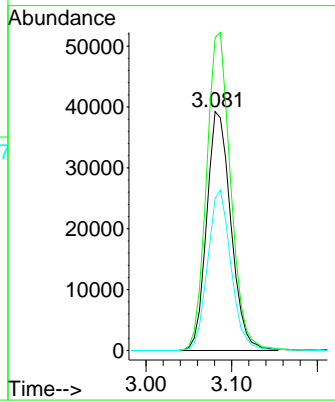
#17
 trans-1,2-Dichloroethene
 Concen: 47.062 ug/L
 RT: 3.081 min Scan# 32
 Delta R.T. -0.000 min
 Lab File: VX043697.D
 Acq: 04 Nov 2024 20:56

Instrument : MSVOA_X
 ClientSampleId : BH6M8



Tgt Ion: 96 Resp: 77026

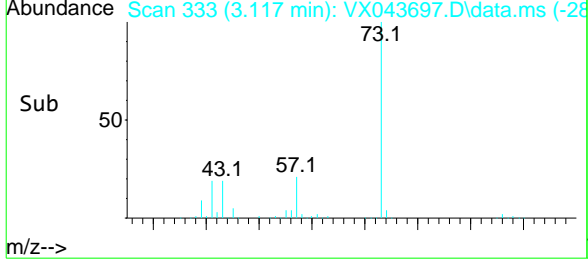
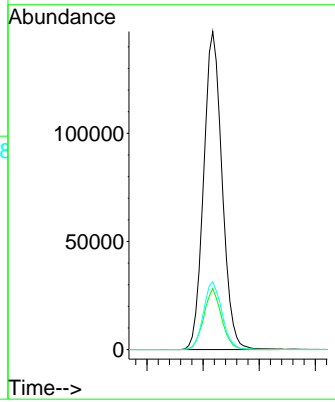
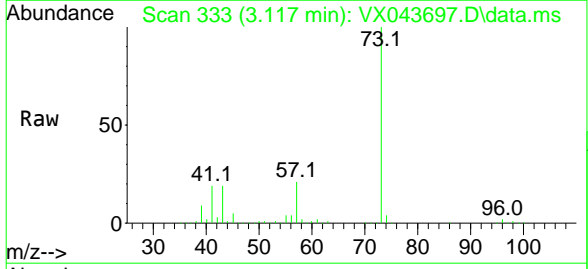
Ion	Ratio	Lower	Upper
96	100		
61	131.0	93.4	173.6
98	63.8	44.1	81.9

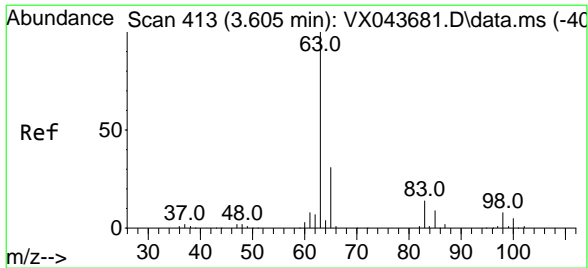


#18
 Methyl tert-butyl Ether
 Concen: 53.952 ug/L
 RT: 3.117 min Scan# 333
 Delta R.T. -0.000 min
 Lab File: VX043697.D
 Acq: 04 Nov 2024 20:56

Tgt Ion: 73 Resp: 335680

Ion	Ratio	Lower	Upper
73	100		
43	18.6	15.5	23.3
57	21.4	17.2	25.8

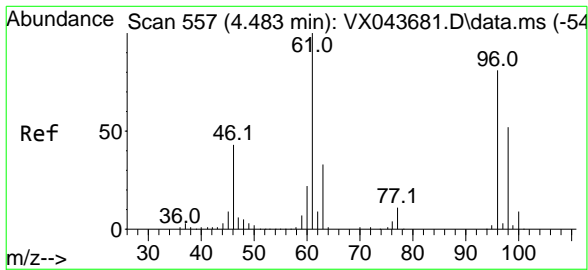
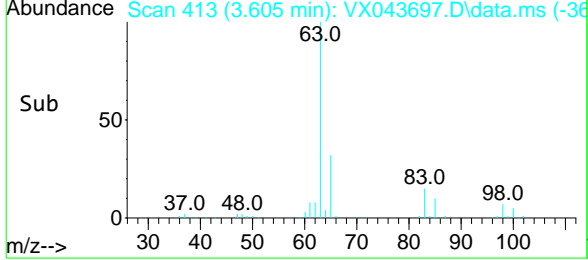
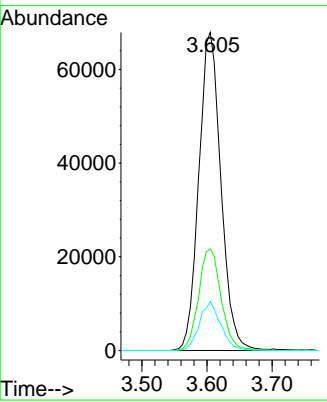
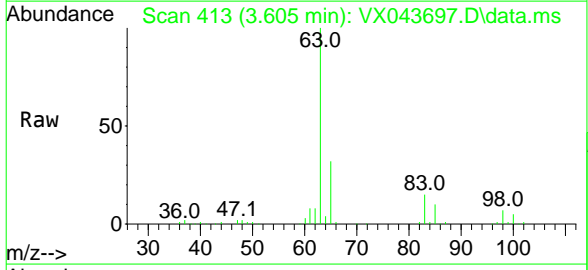




#19
 1,1-Dichloroethane
 Concen: 49.659 ug/L
 RT: 3.605 min Scan# 41
 Delta R.T. -0.000 min
 Lab File: VX043697.D
 Acq: 04 Nov 2024 20:56

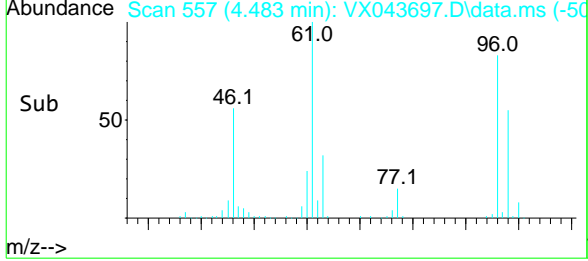
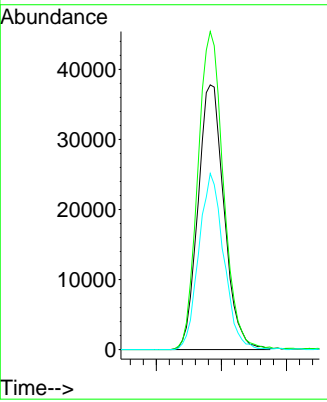
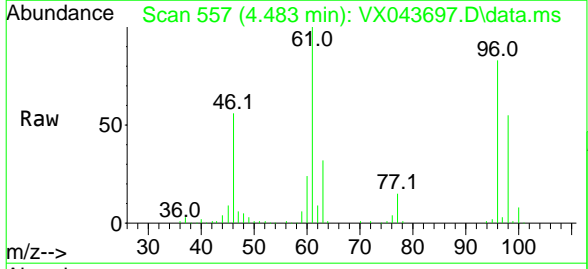
Instrument : MSVOA_X
 ClientSampleId : BH6M8

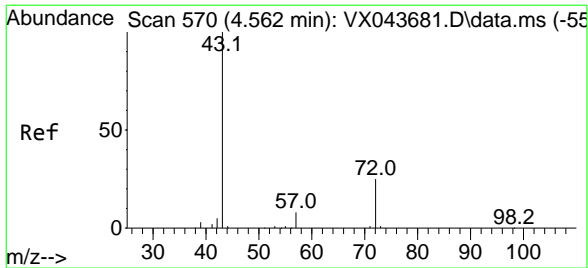
Tgt Ion	Resp	Lower	Upper
63	100		
65	31.9	23.2	43.2
83	15.5	9.4	17.4



#20
 cis-1,2-Dichloroethene
 Concen: 51.684 ug/L
 RT: 4.483 min Scan# 557
 Delta R.T. -0.000 min
 Lab File: VX043697.D
 Acq: 04 Nov 2024 20:56

Tgt Ion	Resp	Lower	Upper
96	100		
61	120.2	85.2	158.2
98	66.5	44.6	82.8

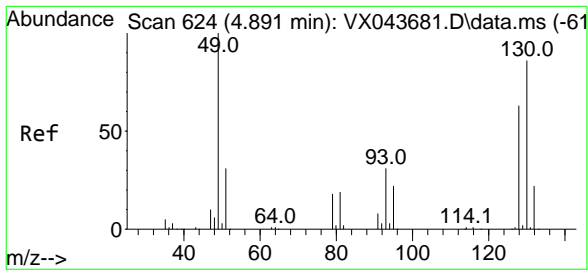
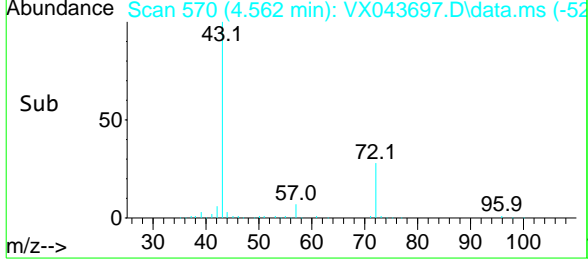
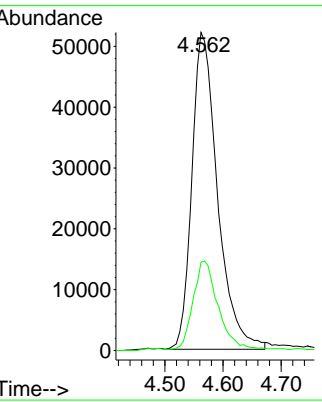
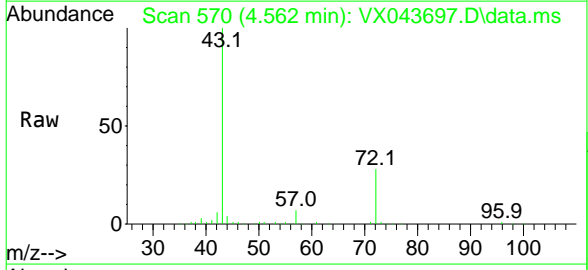




#22
 2-Butanone
 Concen: 119.175 ug/L
 RT: 4.562 min Scan# 570
 Delta R.T. -0.000 min
 Lab File: VX043697.D
 Acq: 04 Nov 2024 20:56

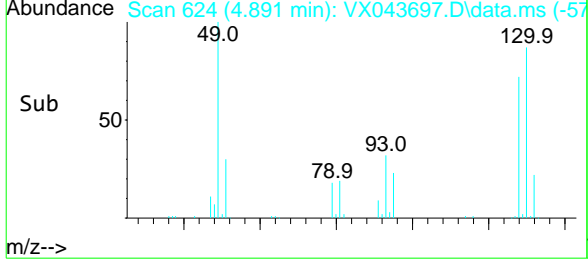
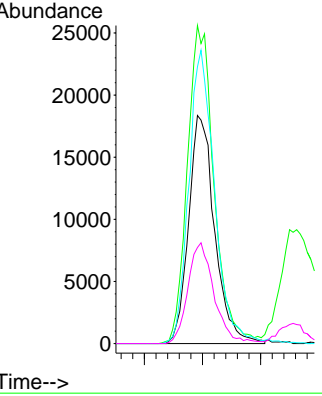
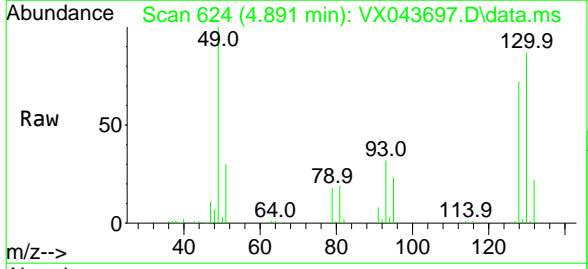
Instrument : MSVOA_X
 ClientSampleId : BH6M8

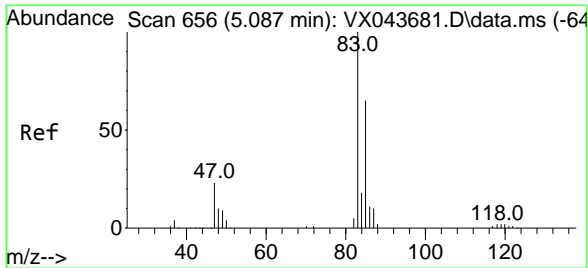
Tgt Ion	Resp	Lower	Upper
43	159522		
72	27.4	13.6	40.8



#23
 Bromochloromethane
 Concen: 55.811 ug/L
 RT: 4.891 min Scan# 624
 Delta R.T. -0.000 min
 Lab File: VX043697.D
 Acq: 04 Nov 2024 20:56

Tgt Ion	Resp	Lower	Upper
128	57031		
49	139.4	101.4	188.4
130	121.3	91.5	169.9
51	42.1	35.2	52.8

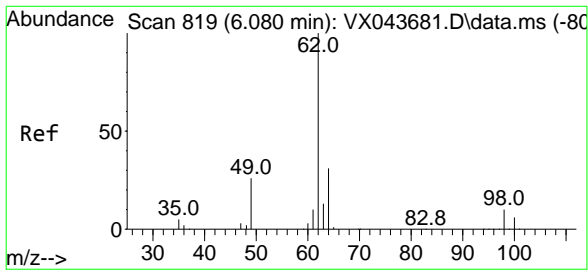
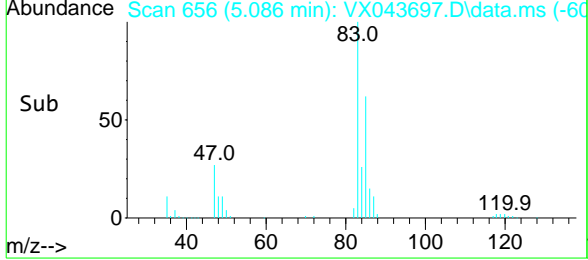
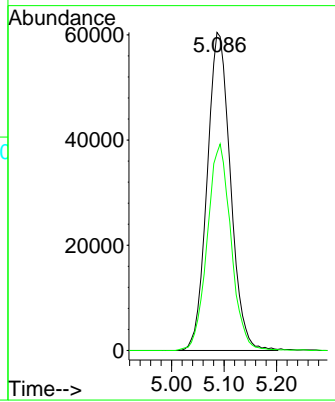
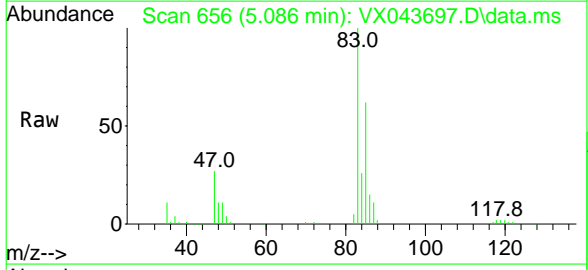




#25
 Chloroform
 Concen: 53.954 ug/L
 RT: 5.086 min Scan# 65
 Delta R.T. -0.000 min
 Lab File: VX043697.D
 Acq: 04 Nov 2024 20:56

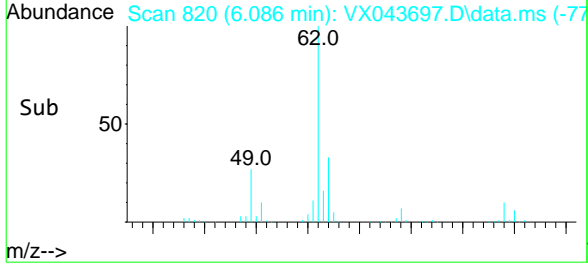
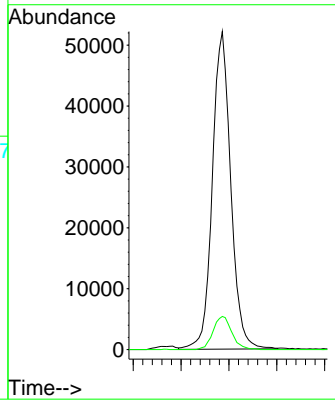
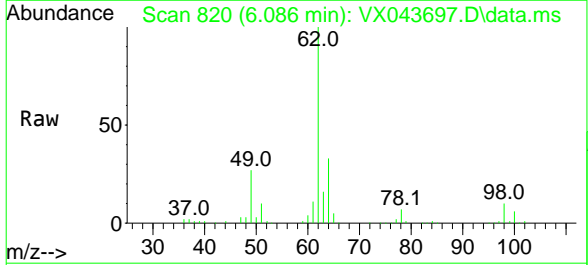
Instrument : MSVOA_X
 ClientSampleId : BH6M8

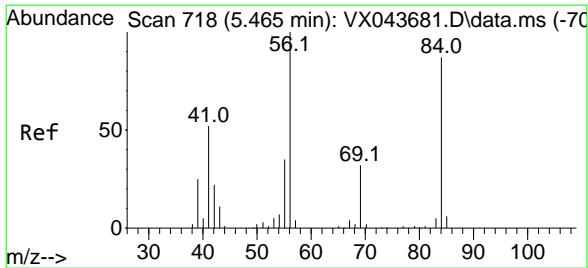
Tgt Ion: 83 Resp: 186600
 Ion Ratio Lower Upper
 83 100
 85 62.1 44.4 82.4



#27
 1,2-Dichloroethane
 Concen: 52.164 ug/L
 RT: 6.086 min Scan# 820
 Delta R.T. 0.006 min
 Lab File: VX043697.D
 Acq: 04 Nov 2024 20:56

Tgt Ion: 62 Resp: 139399
 Ion Ratio Lower Upper
 62 100
 98 10.4 9.0 13.6

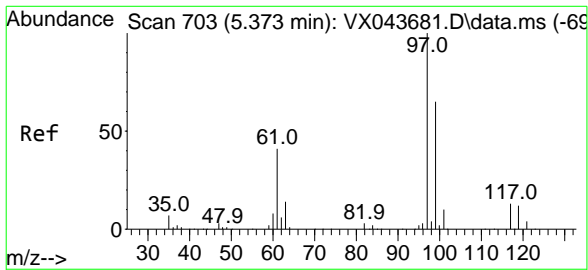
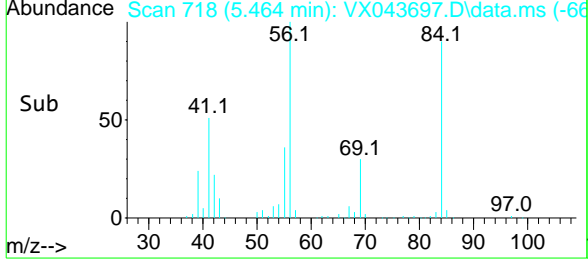
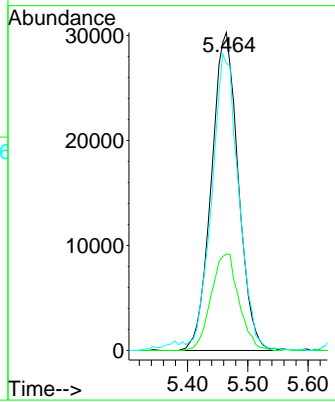
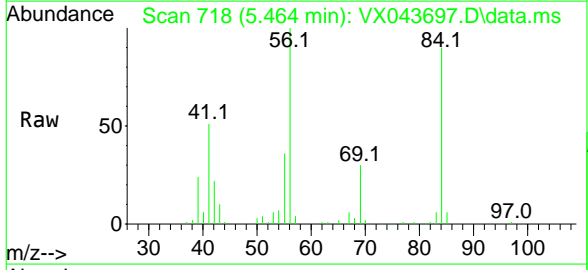




#29
 Cyclohexane
 Concen: 30.552 ug/L
 RT: 5.464 min Scan# 718
 Delta R.T. -0.000 min
 Lab File: VX043697.D
 Acq: 04 Nov 2024 20:56

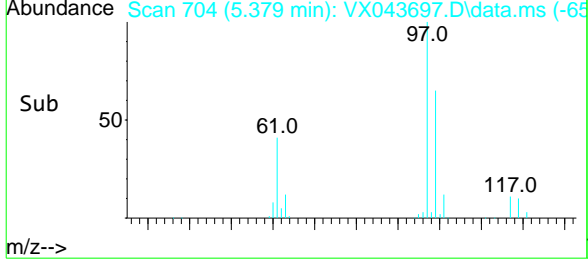
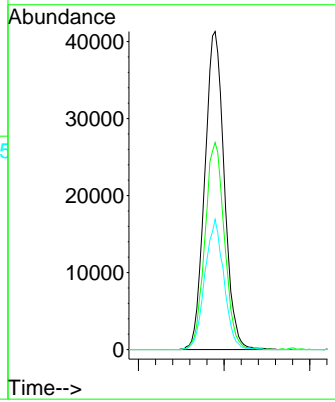
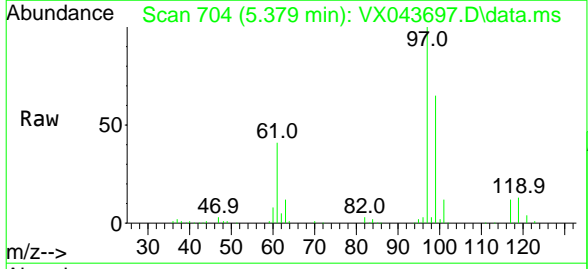
Instrument : MSVOA_X
 ClientSampleId : BH6M8

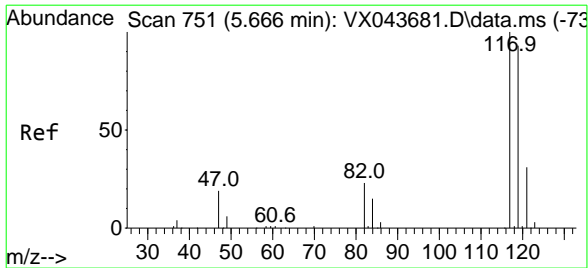
Tgt Ion	Resp	Lower	Upper
56	100		
69	31.4	25.2	37.8
84	93.2	72.9	109.3



#30
 1,1,1-Trichloroethane
 Concen: 40.718 ug/L
 RT: 5.379 min Scan# 704
 Delta R.T. 0.006 min
 Lab File: VX043697.D
 Acq: 04 Nov 2024 20:56

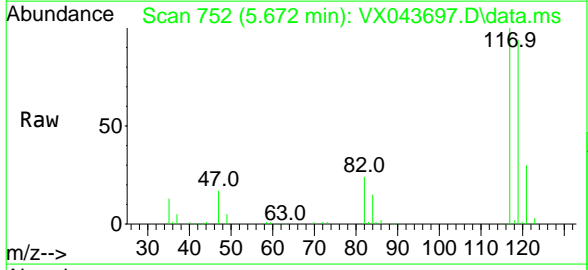
Tgt Ion	Resp	Lower	Upper
97	100		
99	65.1	51.0	76.6
61	39.9	32.6	49.0



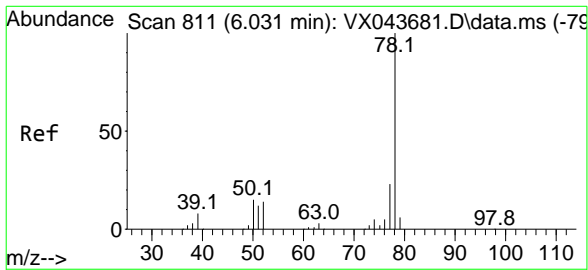
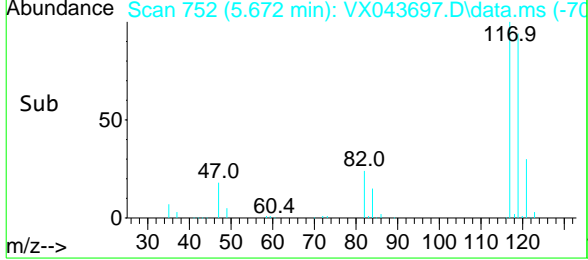
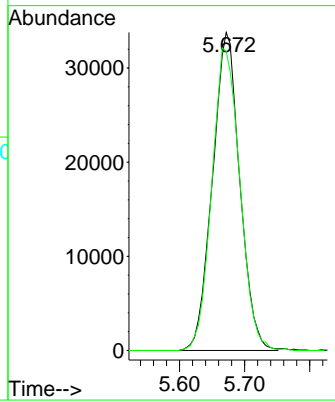


#31
 Carbon tetrachloride
 Concen: 37.429 ug/L
 RT: 5.672 min Scan# 751
 Delta R.T. 0.006 min
 Lab File: VX043697.D
 Acq: 04 Nov 2024 20:56

Instrument :
 MSVOA_X
 ClientSampleId :
 BH6M8

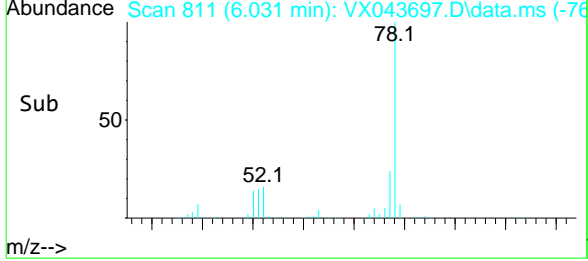
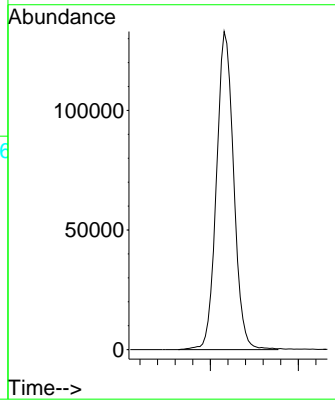
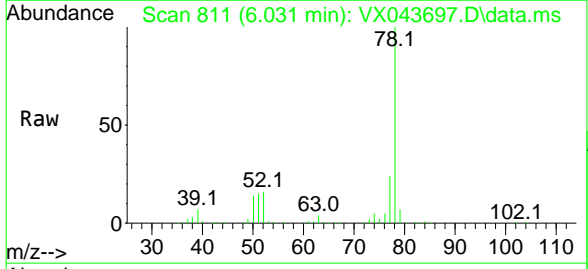


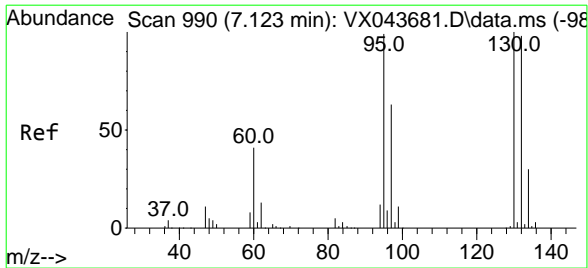
Tgt Ion: 117 Resp: 98331
 Ion Ratio Lower Upper
 117 100
 119 97.8 77.4 116.0



#33
 Benzene
 Concen: 48.048 ug/L
 RT: 6.031 min Scan# 811
 Delta R.T. -0.000 min
 Lab File: VX043697.D
 Acq: 04 Nov 2024 20:56

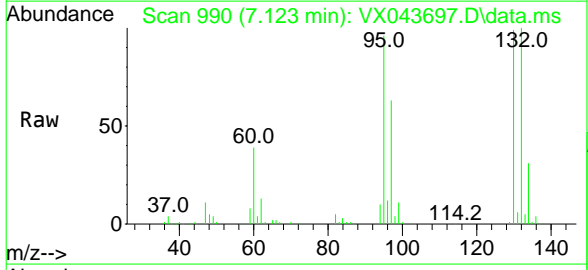
Tgt Ion: 78 Resp: 362041





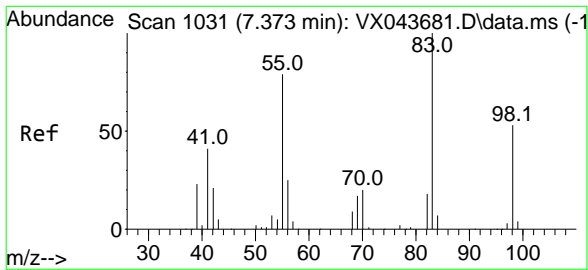
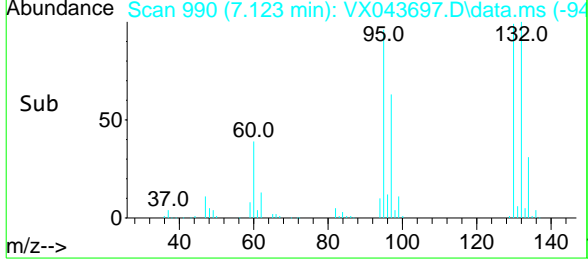
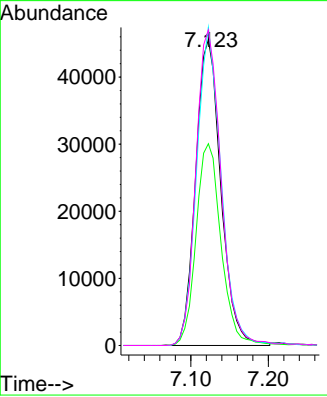
#34
 Trichloroethene
 Concen: 50.720 ug/L
 RT: 7.123 min Scan# 99
 Delta R.T. -0.000 min
 Lab File: VX043697.D
 Acq: 04 Nov 2024 20:56

Instrument : MSVOA_X
 ClientSampleId : BH6M8



Tgt Ion: 95 Resp: 102744

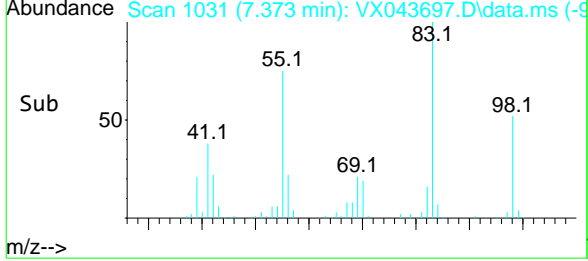
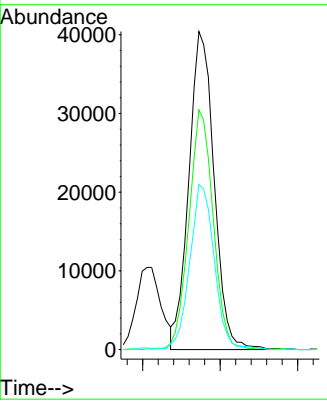
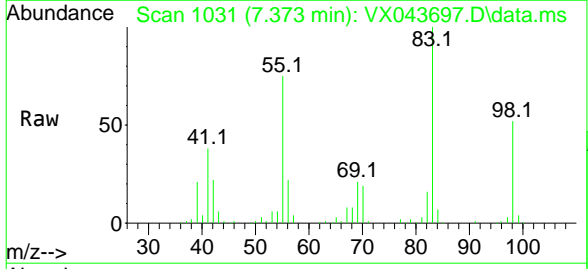
Ion	Ratio	Lower	Upper
95	100		
97	66.0	45.4	84.2
132	104.0	69.7	129.5
130	103.2	72.7	134.9

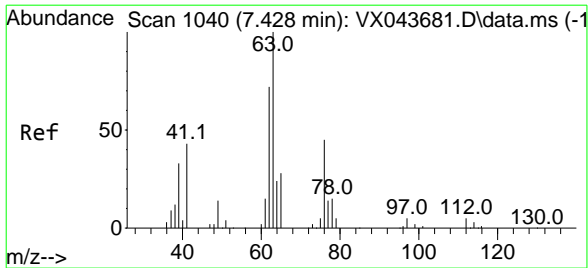


#35
 Methylcyclohexane
 Concen: 30.139 ug/L
 RT: 7.373 min Scan# 1031
 Delta R.T. -0.000 min
 Lab File: VX043697.D
 Acq: 04 Nov 2024 20:56

Tgt Ion: 83 Resp: 91216

Ion	Ratio	Lower	Upper
83	100		
55	72.6	58.6	88.0
98	50.4	39.0	58.4

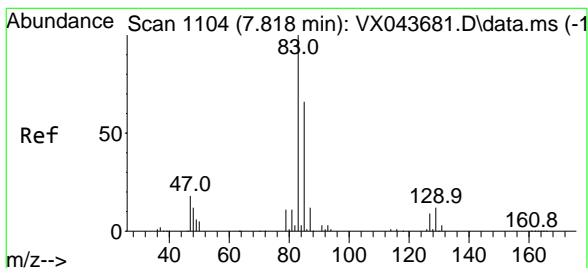
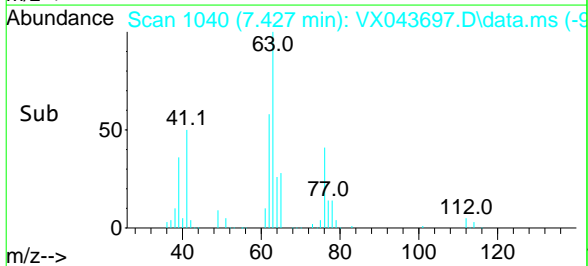
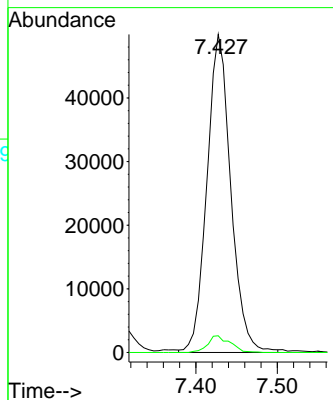
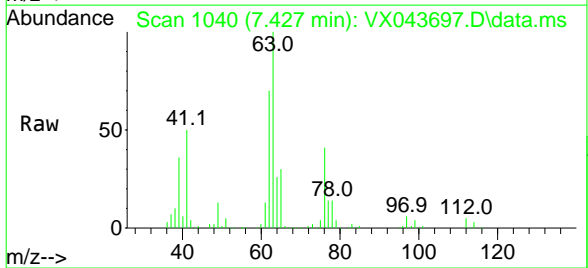




#37
 1,2-Dichloropropane
 Concen: 50.731 ug/L
 RT: 7.427 min Scan# 1040
 Delta R.T. -0.000 min
 Lab File: VX043697.D
 Acq: 04 Nov 2024 20:56

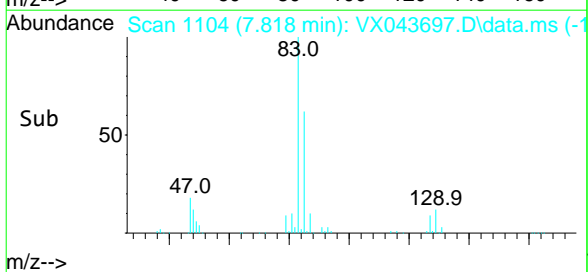
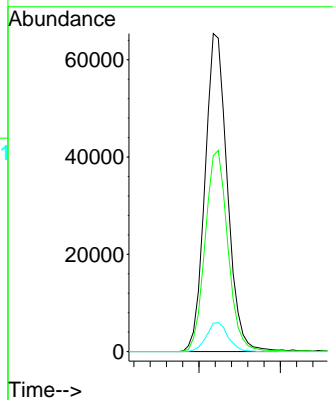
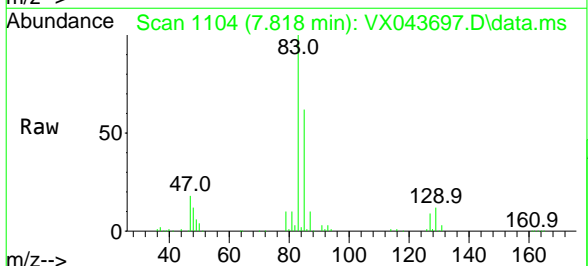
Instrument : MSVOA_X
 ClientSampleId : BH6M8

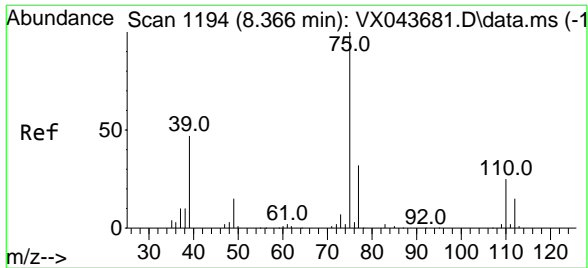
Tgt Ion: 63 Resp: 101822
 Ion Ratio Lower Upper
 63 100
 112 5.0 3.8 5.8



#38
 Bromodichloromethane
 Concen: 48.788 ug/L
 RT: 7.818 min Scan# 1104
 Delta R.T. -0.000 min
 Lab File: VX043697.D
 Acq: 04 Nov 2024 20:56

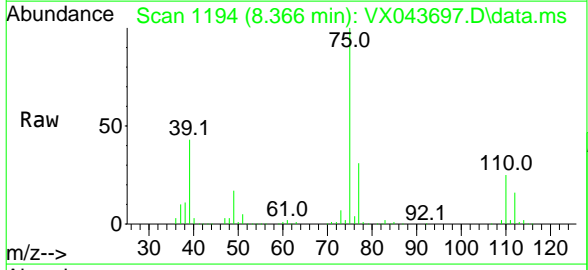
Tgt Ion: 83 Resp: 124550
 Ion Ratio Lower Upper
 83 100
 85 61.6 43.8 81.3
 127 8.9 6.8 10.2



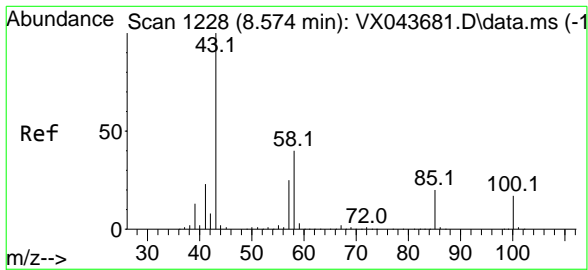
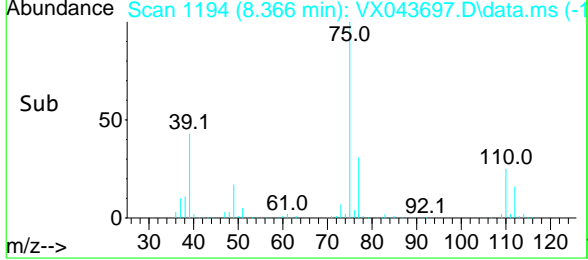
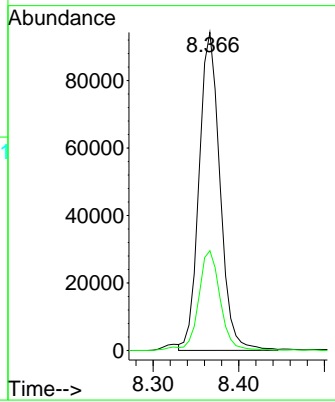


#39
 cis-1,3-Dichloropropene
 Concen: 48.722 ug/L
 RT: 8.366 min Scan# 1194
 Delta R.T. -0.000 min
 Lab File: VX043697.D
 Acq: 04 Nov 2024 20:56

Instrument : MSVOA_X
 ClientSampleId : BH6M8

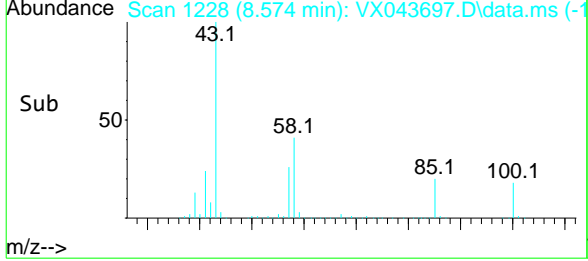
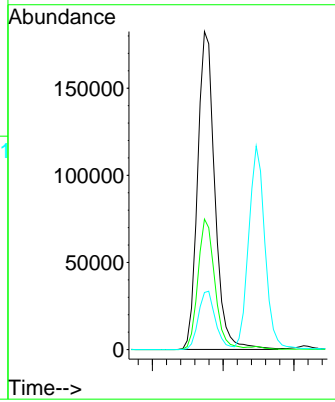
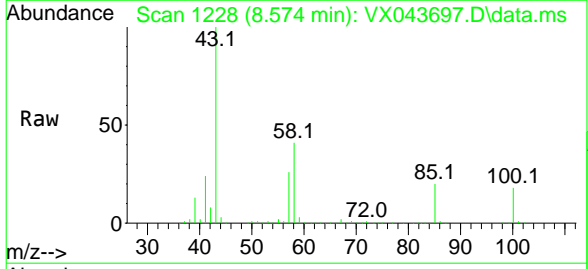


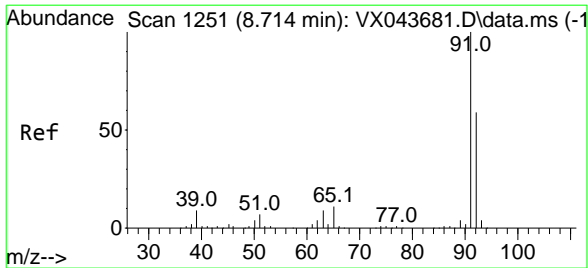
Tgt Ion: 75 Resp: 159645
 Ion Ratio Lower Upper
 75 100
 77 31.4 21.7 40.3



#40
 4-Methyl-2-pentanone
 Concen: 112.969 ug/L
 RT: 8.574 min Scan# 1228
 Delta R.T. -0.000 min
 Lab File: VX043697.D
 Acq: 04 Nov 2024 20:56

Tgt Ion: 43 Resp: 308617
 Ion Ratio Lower Upper
 43 100
 58 40.2 31.6 47.4
 100 18.3 13.8 20.6

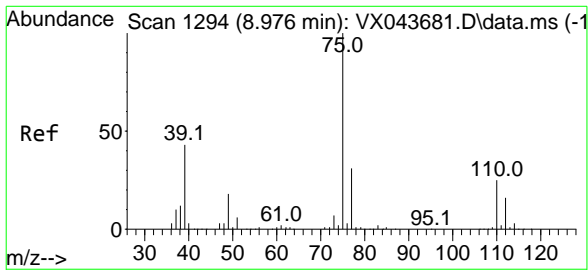
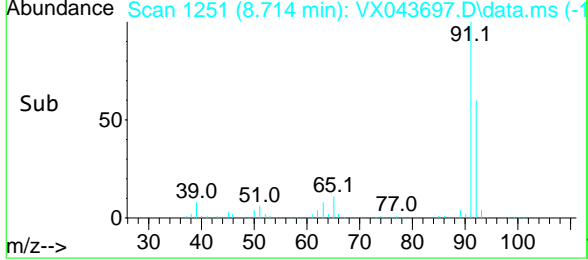
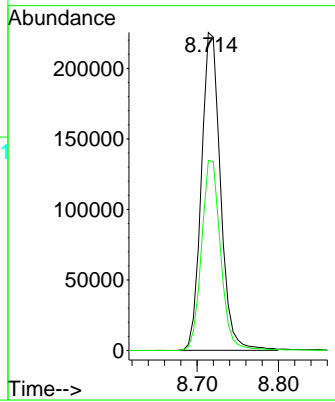
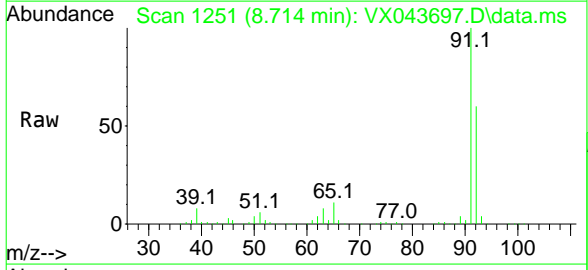




#42
 Toluene
 Concen: 46.413 ug/L
 RT: 8.714 min Scan# 1251
 Delta R.T. -0.000 min
 Lab File: VX043697.D
 Acq: 04 Nov 2024 20:56

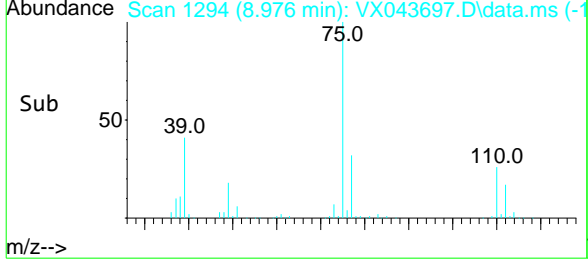
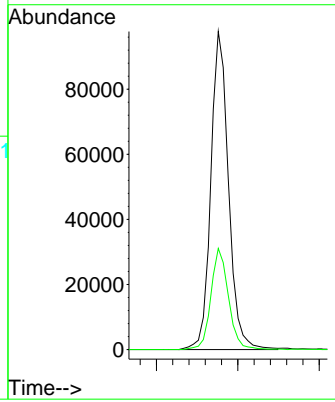
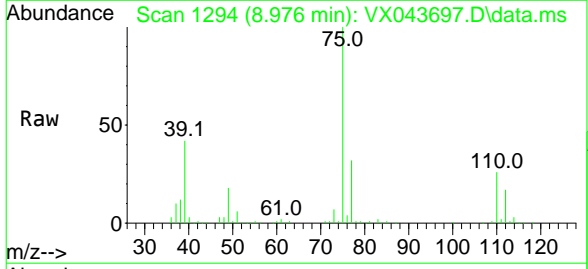
Instrument : MSVOA_X
 ClientSampleId : BH6M8

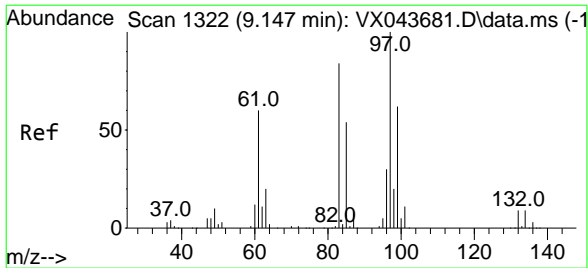
Tgt Ion: 91 Resp: 367833
 Ion Ratio Lower Upper
 91 100
 92 59.8 41.6 77.3



#44
 trans-1,3-Dichloropropene
 Concen: 49.367 ug/L
 RT: 8.976 min Scan# 1294
 Delta R.T. -0.000 min
 Lab File: VX043697.D
 Acq: 04 Nov 2024 20:56

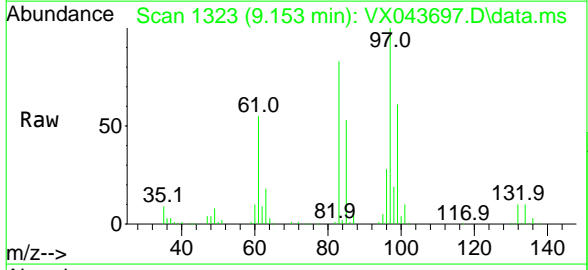
Tgt Ion: 75 Resp: 147499
 Ion Ratio Lower Upper
 75 100
 77 31.8 21.8 40.4





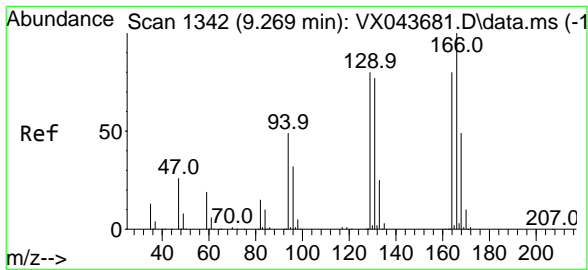
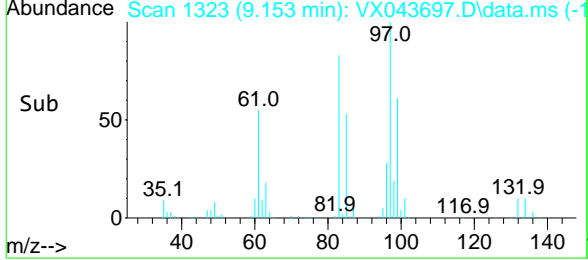
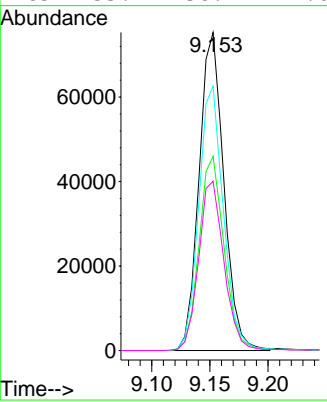
#45
 1,1,2-Trichloroethane
 Concen: 53.992 ug/L
 RT: 9.153 min Scan# 13
 Delta R.T. 0.006 min
 Lab File: VX043697.D
 Acq: 04 Nov 2024 20:56

Instrument : MSVOA_X
 ClientSampleId : BH6M8

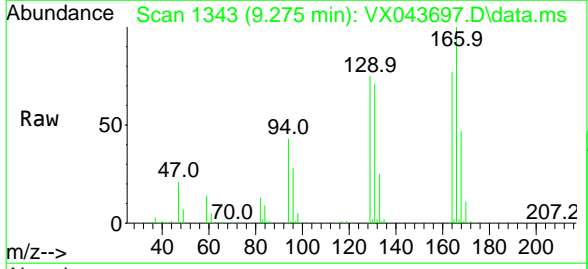


Tgt Ion: 97 Resp: 111125

Ion	Ratio	Lower	Upper
97	100		
99	61.0	42.8	79.4
83	83.1	58.4	108.4
85	53.2	38.2	71.0

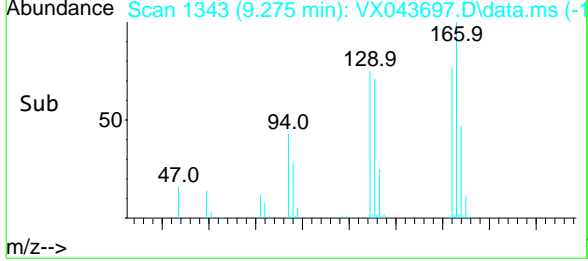
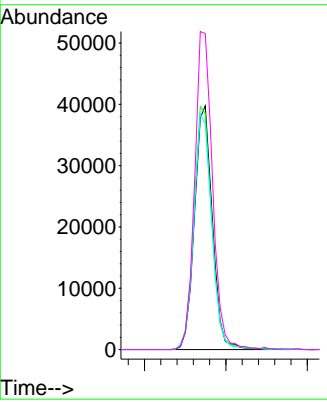


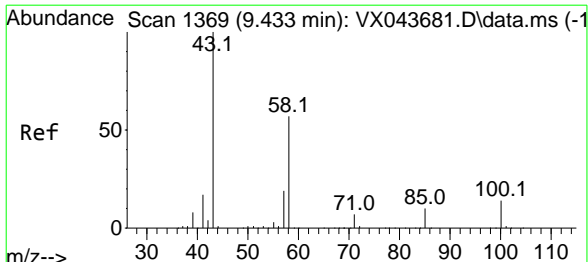
#46
 Tetrachloroethene
 Concen: 41.568 ug/L
 RT: 9.275 min Scan# 1343
 Delta R.T. 0.006 min
 Lab File: VX043697.D
 Acq: 04 Nov 2024 20:56



Tgt Ion: 164 Resp: 60610

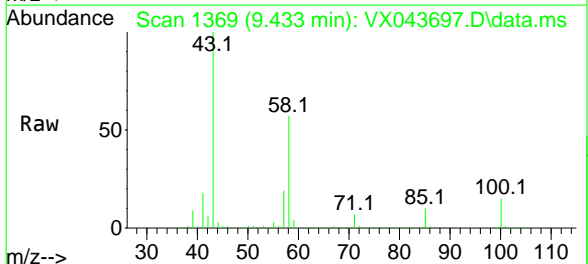
Ion	Ratio	Lower	Upper
164	100		
129	96.9	72.2	134.2
131	92.5	69.0	128.2
166	129.6	87.9	163.3



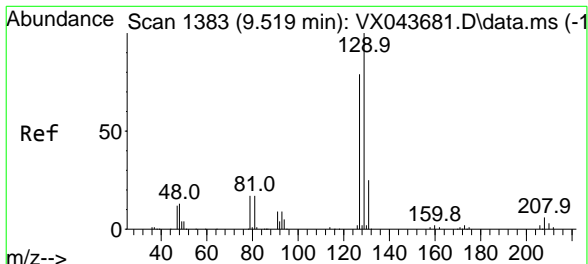
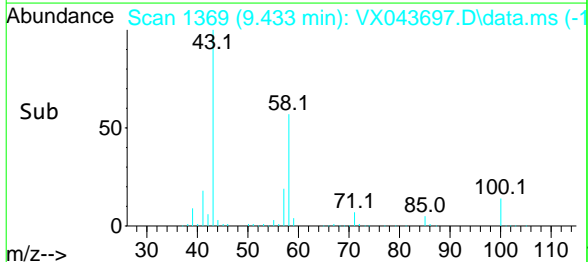
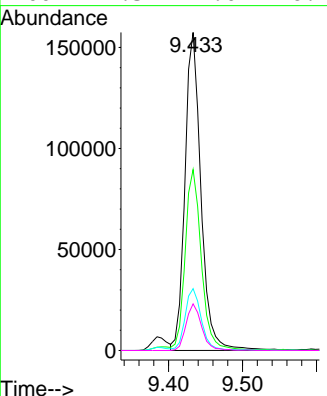


#48
 2-Hexanone
 Concen: 115.867 ug/L
 RT: 9.433 min Scan# 1369
 Delta R.T. -0.000 min
 Lab File: VX043697.D
 Acq: 04 Nov 2024 20:56

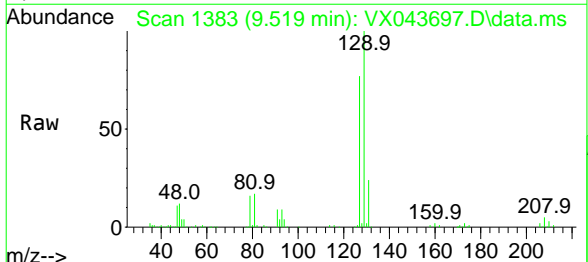
Instrument : MSVOA_X
 ClientSampleId : BH6M8



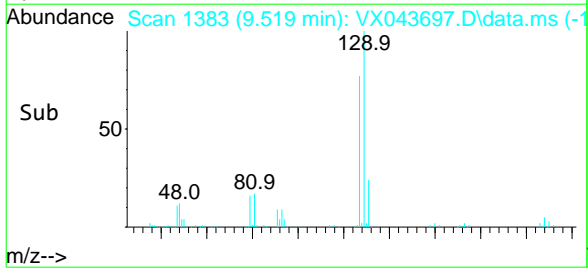
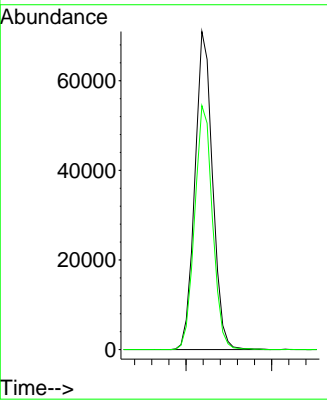
Tgt Ion	Resp	Lower	Upper
43	100		
58	57.5	44.6	67.0
57	19.7	15.7	23.5
100	14.3	11.0	16.4

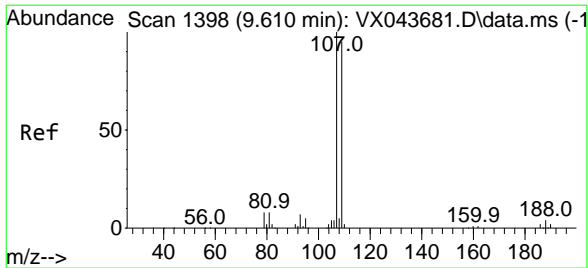


#49
 Dibromochloromethane
 Concen: 53.014 ug/L
 RT: 9.519 min Scan# 1383
 Delta R.T. -0.000 min
 Lab File: VX043697.D
 Acq: 04 Nov 2024 20:56



Tgt Ion	Resp	Lower	Upper
129	100		
127	76.7	54.2	100.6

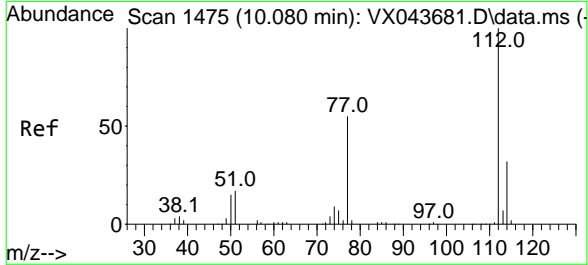
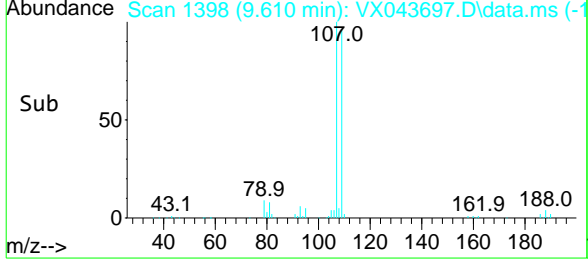
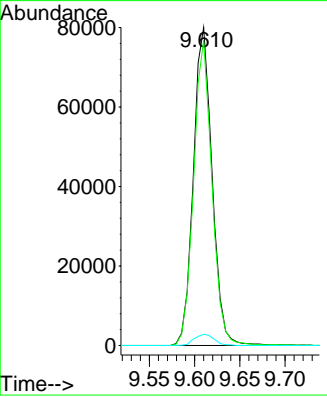
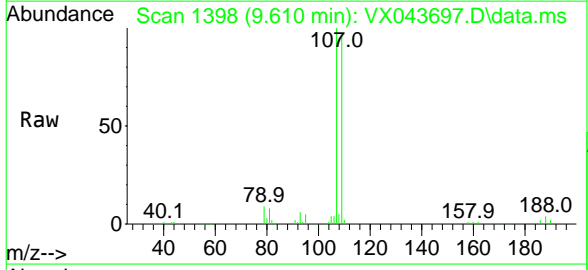




#50
 1,2-Dibromoethane
 Concen: 54.342 ug/L
 RT: 9.610 min Scan# 1398
 Delta R.T. -0.000 min
 Lab File: VX043697.D
 Acq: 04 Nov 2024 20:56

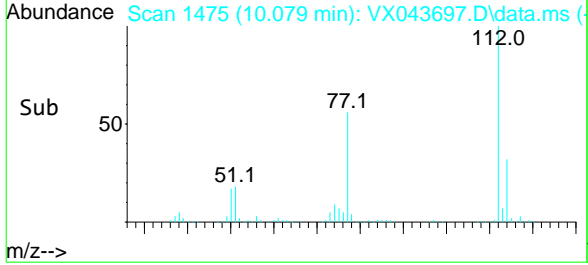
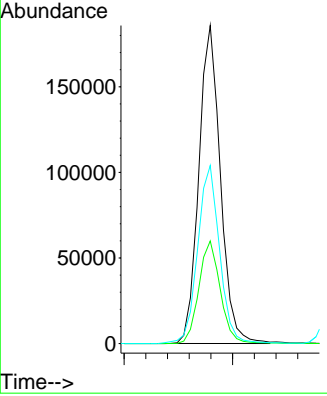
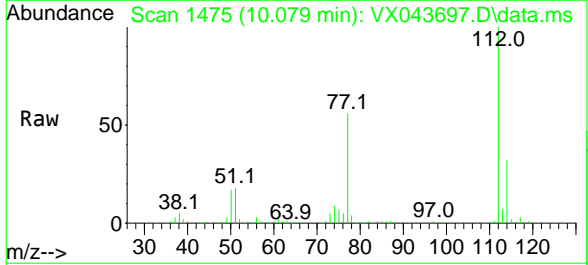
Instrument : MSVOA_X
 ClientSampleId : BH6M8

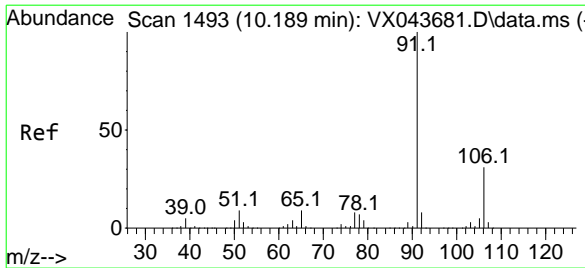
Tgt Ion	Resp	Lower	Upper
107	115481		
109	95.9	64.9	120.5
188	3.5	2.6	4.0



#51
 Chlorobenzene
 Concen: 49.610 ug/L
 RT: 10.079 min Scan# 1475
 Delta R.T. -0.000 min
 Lab File: VX043697.D
 Acq: 04 Nov 2024 20:56

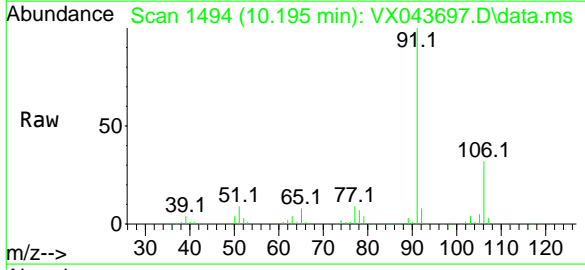
Tgt Ion	Resp	Lower	Upper
112	256953		
114	32.3	22.6	42.0
77	56.0	45.9	68.9



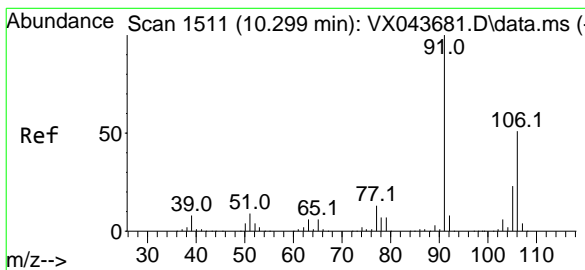
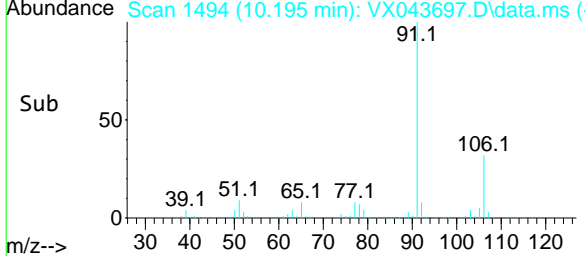
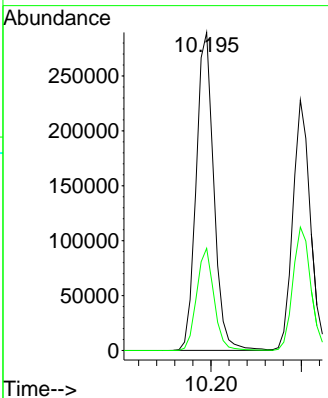


#52
 Ethylbenzene
 Concen: 45.491 ug/L
 RT: 10.195 min Scan# 1494
 Delta R.T. 0.006 min
 Lab File: VX043697.D
 Acq: 04 Nov 2024 20:56

Instrument : MSVOA_X
 ClientSampleId : BH6M8

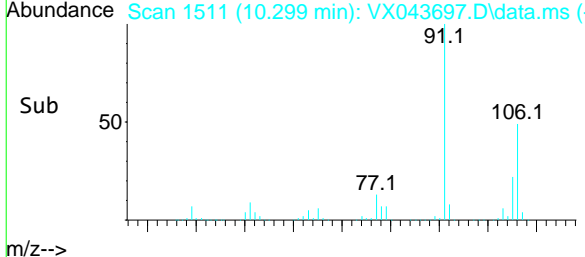
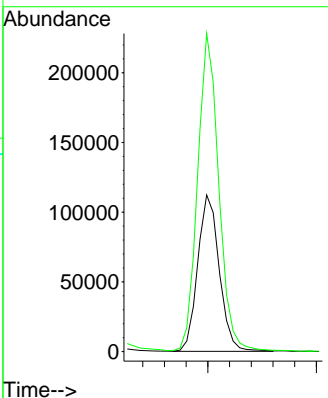
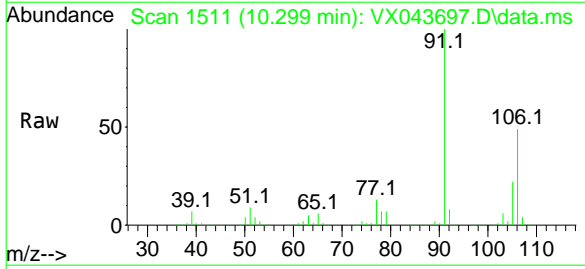


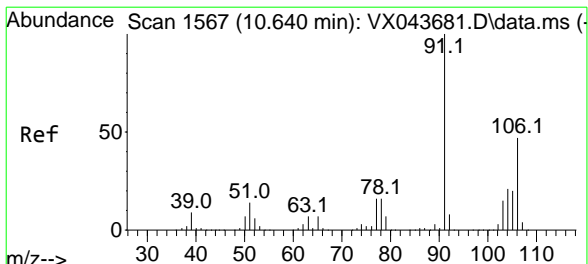
Tgt Ion: 91 Resp: 391879
 Ion Ratio Lower Upper
 91 100
 106 32.1 21.9 40.7



#53
 m,p-Xylene
 Concen: 46.542 ug/L
 RT: 10.299 min Scan# 1511
 Delta R.T. -0.000 min
 Lab File: VX043697.D
 Acq: 04 Nov 2024 20:56

Tgt Ion: 106 Resp: 154772
 Ion Ratio Lower Upper
 106 100
 91 203.0 140.6 261.2

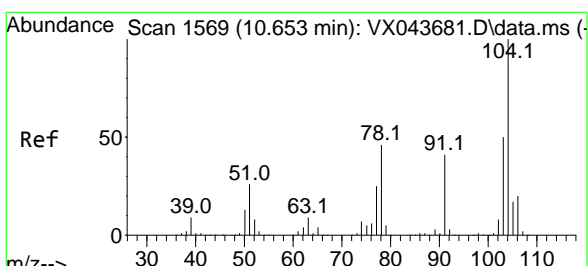
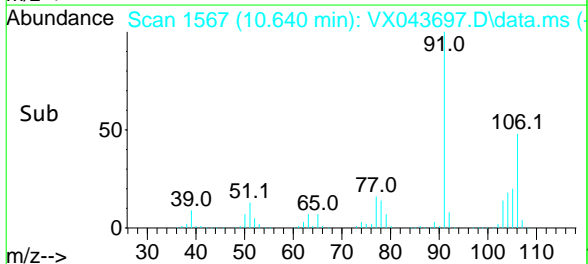
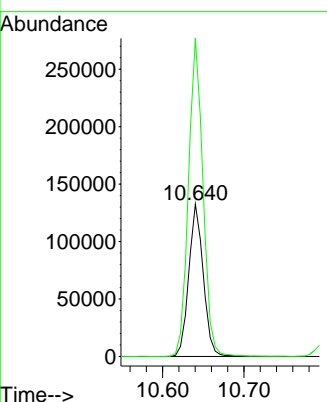
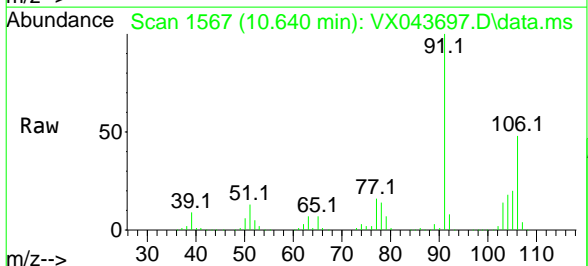




#54
 o-Xylene
 Concen: 49.426 ug/L
 RT: 10.640 min Scan# 1567
 Delta R.T. -0.000 min
 Lab File: VX043697.D
 Acq: 04 Nov 2024 20:56

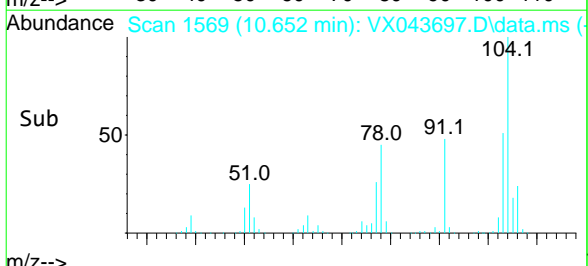
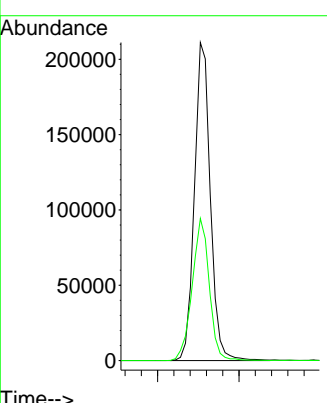
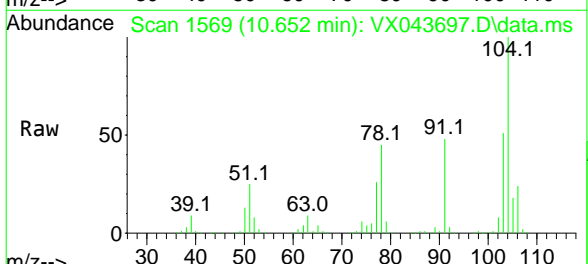
Instrument : MSVOA_X
 ClientSampleId : BH6M8

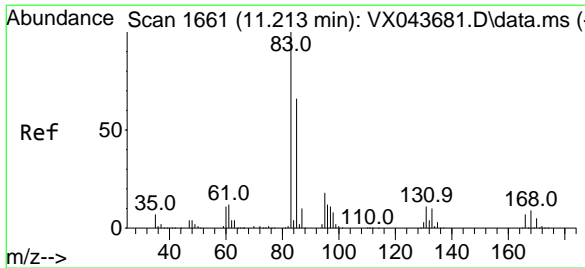
Tgt Ion:106 Resp: 163860
 Ion Ratio Lower Upper
 106 100
 91 208.6 151.9 282.1



#55
 Styrene
 Concen: 51.984 ug/L
 RT: 10.652 min Scan# 1569
 Delta R.T. -0.000 min
 Lab File: VX043697.D
 Acq: 04 Nov 2024 20:56

Tgt Ion:104 Resp: 286685
 Ion Ratio Lower Upper
 104 100
 78 44.7 31.6 58.6

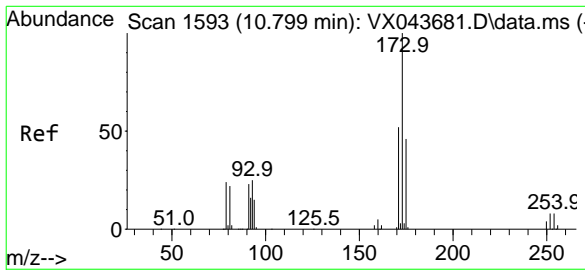
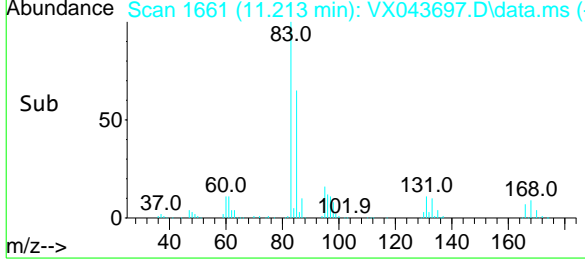
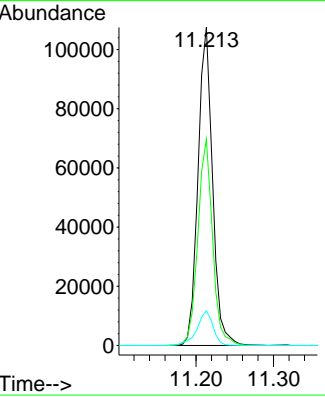
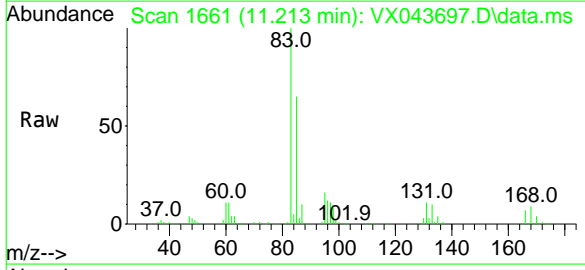




#57
 1,1,2,2-Tetrachloroethane
 Concen: 45.457 ug/L
 RT: 11.213 min Scan# 1661
 Delta R.T. -0.000 min
 Lab File: VX043697.D
 Acq: 04 Nov 2024 20:56

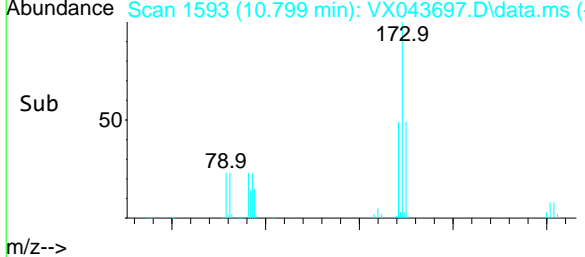
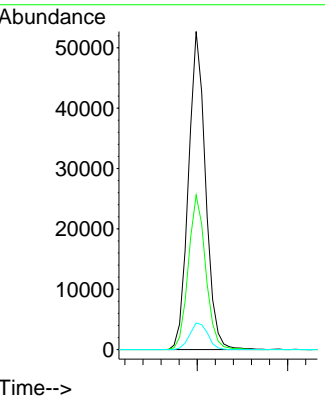
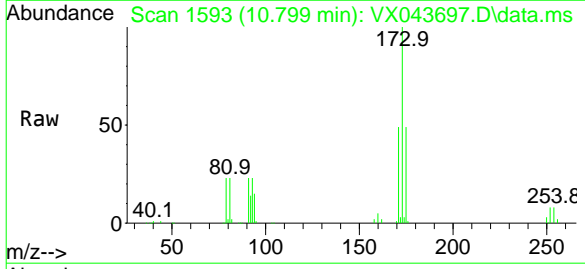
Instrument : MSVOA_X
 ClientSampleId : BH6M8

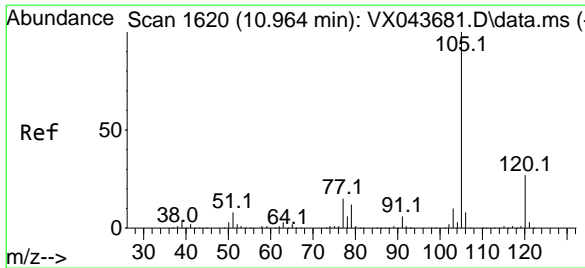
Tgt Ion	Resp	Lower	Upper
83	140124		
85	64.8	45.2	84.0
131	10.9	8.3	12.5



#59
 Bromoform
 Concen: 53.306 ug/L
 RT: 10.799 min Scan# 1593
 Delta R.T. -0.000 min
 Lab File: VX043697.D
 Acq: 04 Nov 2024 20:56

Tgt Ion	Resp	Lower	Upper
173	69085		
175	49.2	37.0	55.6
254	8.9	6.4	9.6

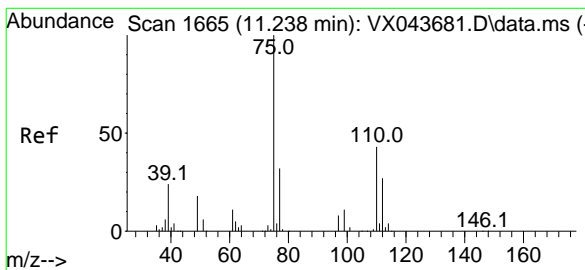
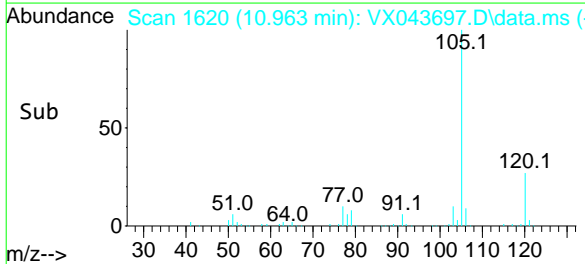
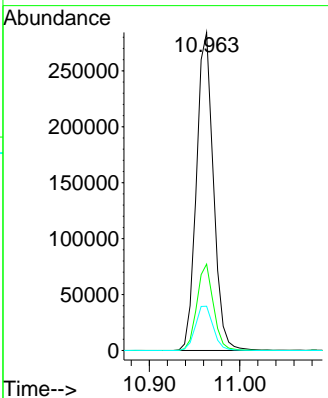
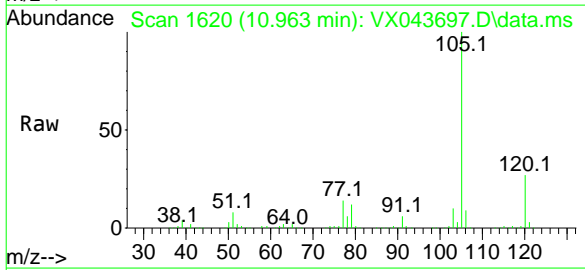




#60
 Isopropylbenzene
 Concen: 43.135 ug/L
 RT: 10.963 min Scan# 16
 Delta R.T. -0.000 min
 Lab File: VX043697.D
 Acq: 04 Nov 2024 20:56

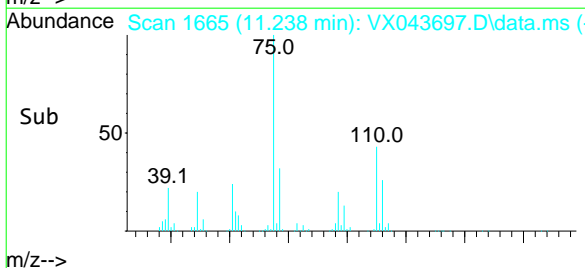
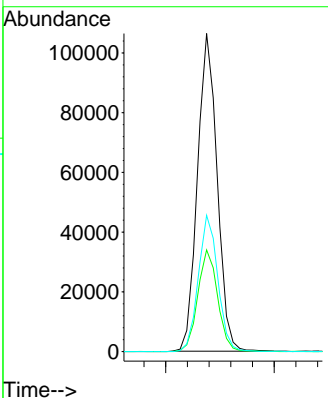
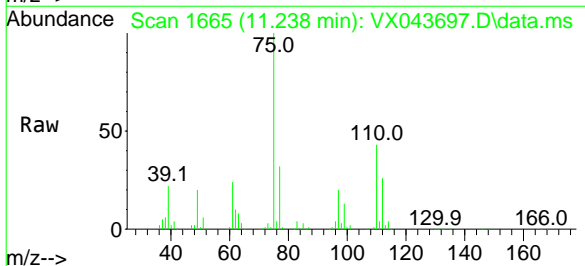
Instrument : MSVOA_X
 ClientSampleId : BH6M8

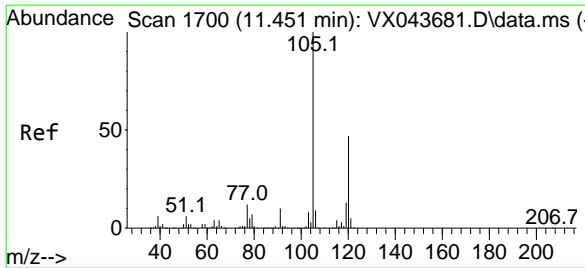
Tgt Ion	Resp	Lower	Upper
105	100		
120	26.6	21.1	31.7
77	14.7	12.3	18.5



#61
 1,2,3-Trichloropropane
 Concen: 55.743 ug/L
 RT: 11.238 min Scan# 1665
 Delta R.T. -0.000 min
 Lab File: VX043697.D
 Acq: 04 Nov 2024 20:56

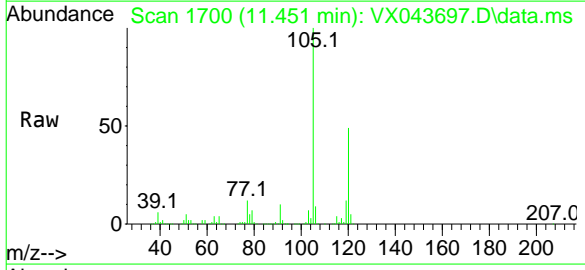
Tgt Ion	Resp	Lower	Upper
75	100		
77	32.4	25.4	38.0
110	42.5	33.6	50.4



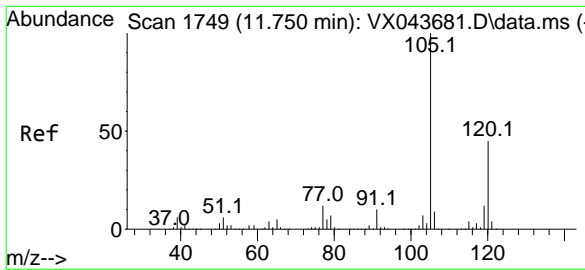
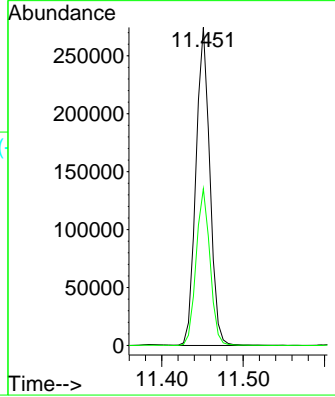
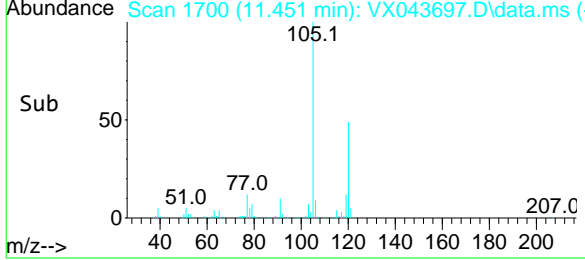


#62
 1,3,5-Trimethylbenzene
 Concen: 45.190 ug/L
 RT: 11.451 min Scan# 1700
 Delta R.T. -0.000 min
 Lab File: VX043697.D
 Acq: 04 Nov 2024 20:56

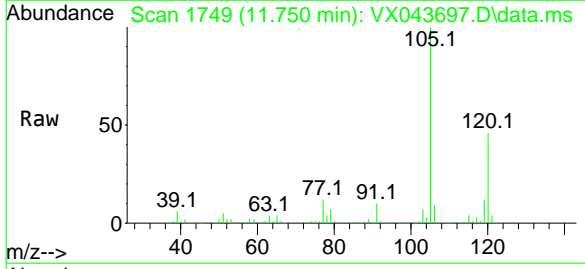
Instrument : MSVOA_X
 ClientSampleId : BH6M8



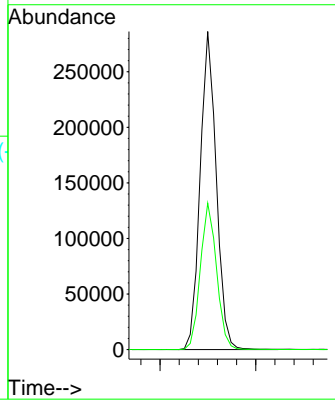
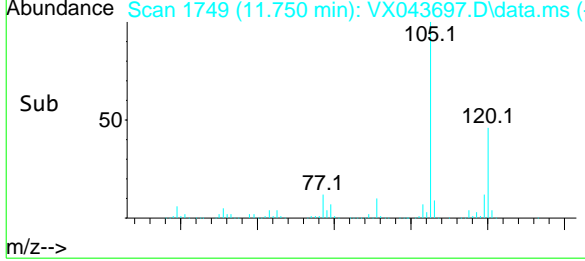
Tgt Ion:105 Resp: 326333
 Ion Ratio Lower Upper
 105 100
 120 49.1 39.4 59.2

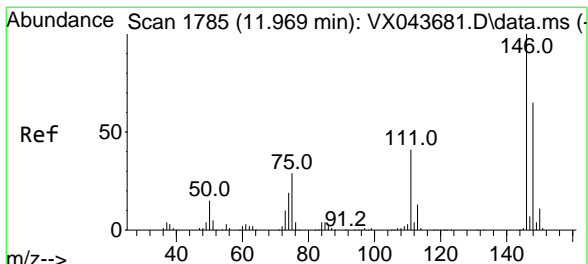


#63
 1,2,4-Trimethylbenzene
 Concen: 46.501 ug/L
 RT: 11.750 min Scan# 1749
 Delta R.T. -0.000 min
 Lab File: VX043697.D
 Acq: 04 Nov 2024 20:56



Tgt Ion:105 Resp: 334346
 Ion Ratio Lower Upper
 105 100
 120 46.4 35.7 53.5



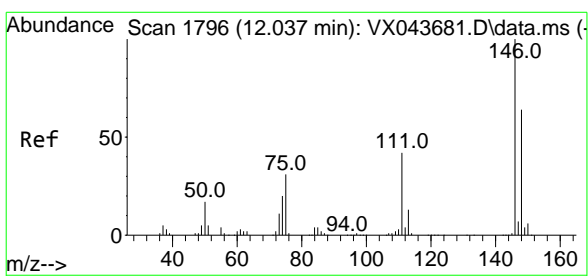
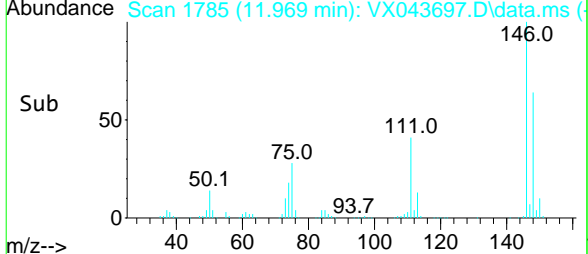
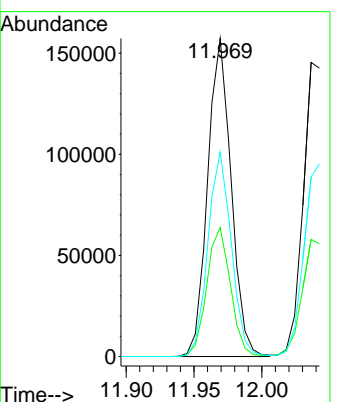
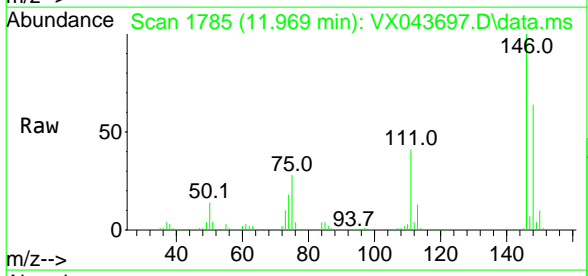


#64
 1,3-Dichlorobenzene
 Concen: 50.174 ug/L
 RT: 11.969 min Scan# 1785
 Delta R.T. -0.000 min
 Lab File: VX043697.D
 Acq: 04 Nov 2024 20:56

Instrument : MSVOA_X
 ClientSampleId : BH6M8

Tgt Ion:146 Resp: 189608

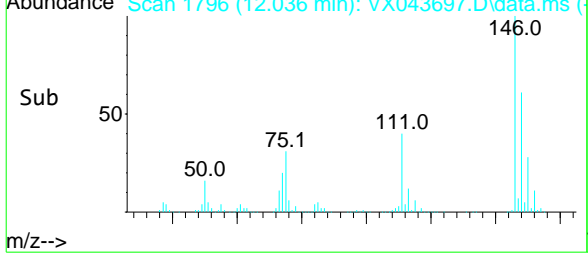
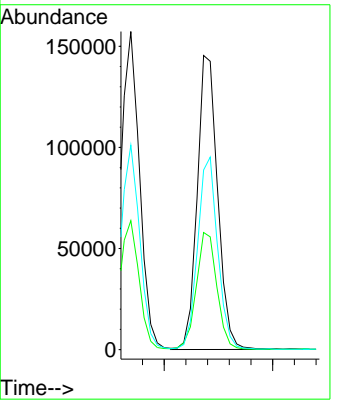
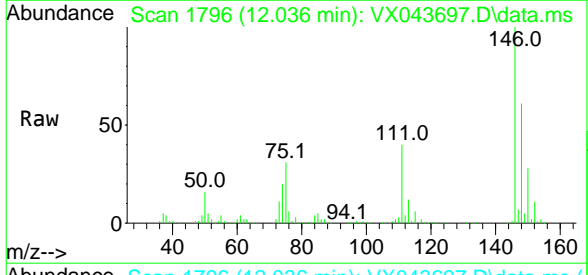
Ion	Ratio	Lower	Upper
146	100		
111	40.5	28.3	52.5
148	64.3	45.1	83.9

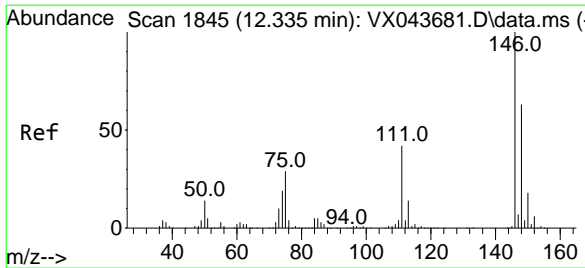


#65
 1,4-Dichlorobenzene
 Concen: 49.973 ug/L
 RT: 12.036 min Scan# 1796
 Delta R.T. -0.000 min
 Lab File: VX043697.D
 Acq: 04 Nov 2024 20:56

Tgt Ion:146 Resp: 190210

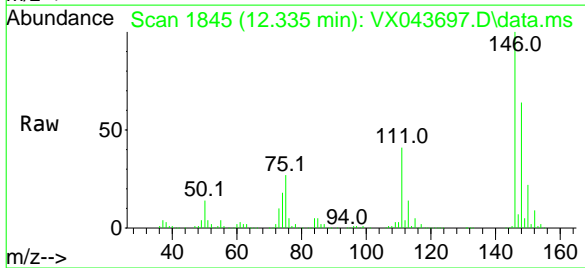
Ion	Ratio	Lower	Upper
146	100		
111	39.8	28.9	53.7
148	61.1	45.0	83.6





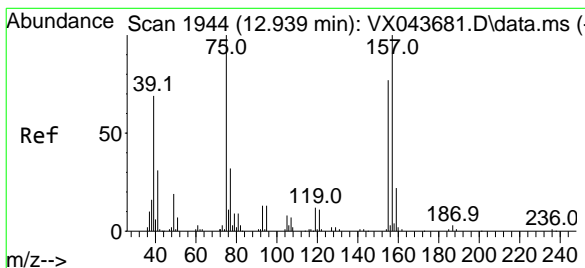
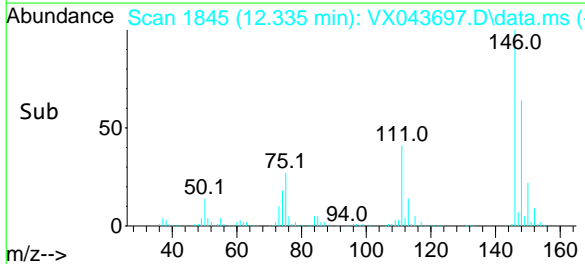
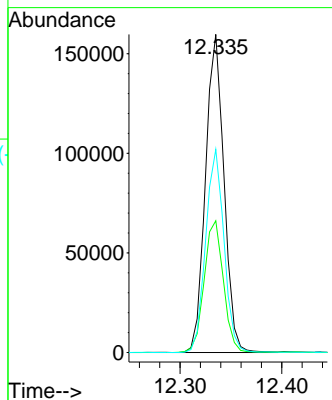
#67
 1,2-Dichlorobenzene
 Concen: 52.176 ug/L
 RT: 12.335 min Scan# 18
 Delta R.T. -0.000 min
 Lab File: VX043697.D
 Acq: 04 Nov 2024 20:56

Instrument :
 MSVOA_X
 ClientSampleId :
 BH6M8



Tgt Ion:146 Resp: 201494

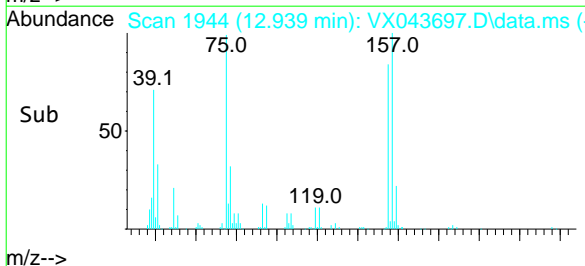
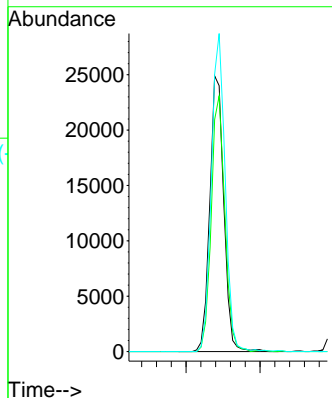
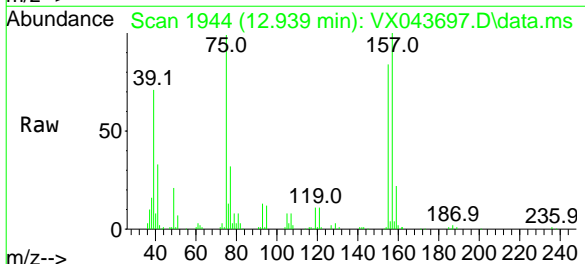
Ion	Ratio	Lower	Upper
146	100		
111	41.4	33.9	50.9
148	63.9	50.6	76.0

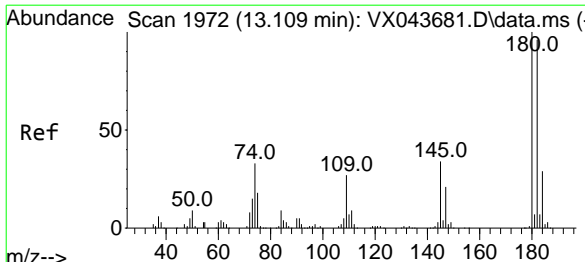


#68
 1,2-Dibromo-3-chloropropane
 Concen: 54.316 ug/L
 RT: 12.939 min Scan# 1944
 Delta R.T. -0.000 min
 Lab File: VX043697.D
 Acq: 04 Nov 2024 20:56

Tgt Ion: 75 Resp: 32711

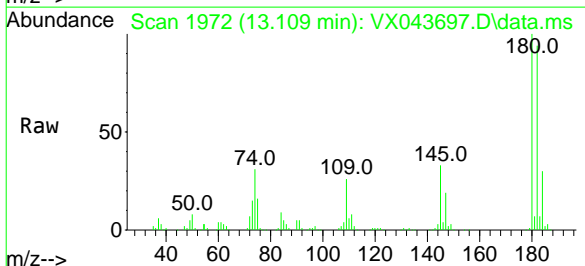
Ion	Ratio	Lower	Upper
75	100		
155	84.2	63.8	95.8
157	100.6	80.3	120.5



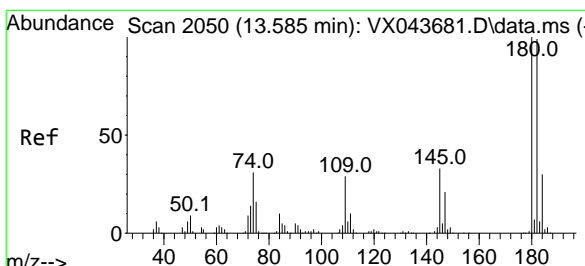
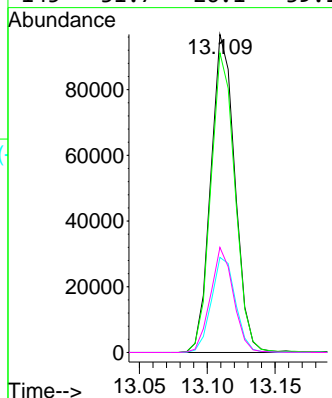
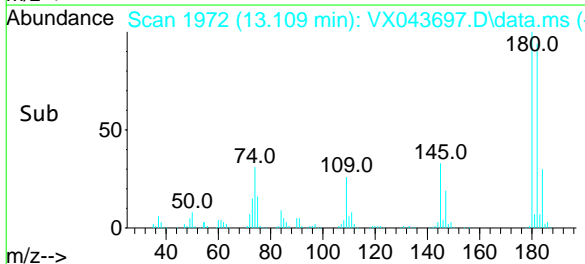


#69
 1,3,5-Trichlorobenzene
 Concen: 47.338 ug/L
 RT: 13.109 min Scan# 1972
 Delta R.T. -0.000 min
 Lab File: VX043697.D
 Acq: 04 Nov 2024 20:56

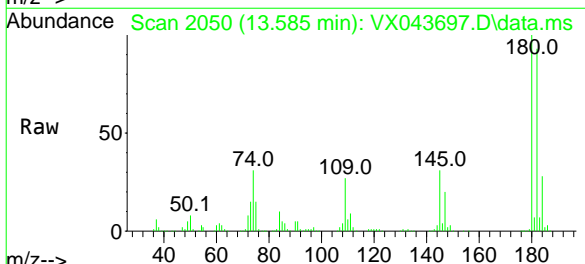
Instrument : MSVOA_X
 ClientSampleId : BH6M8



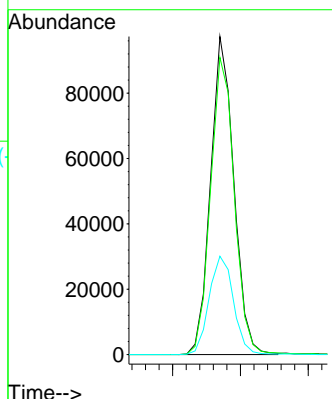
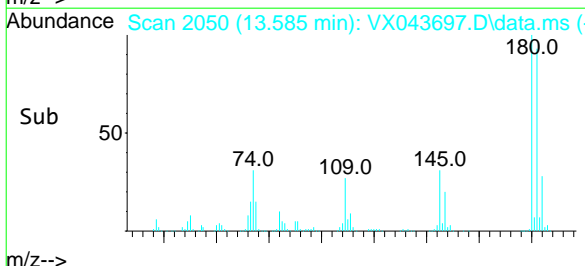
Tgt Ion:180 Resp: 119313
 Ion Ratio Lower Upper
 180 100
 182 94.3 74.7 112.1
 184 30.0 23.7 35.5
 145 31.7 26.1 39.1

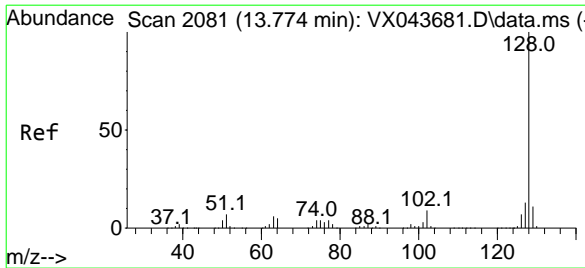


#70
 1,2,4-trichlorobenzene
 Concen: 50.272 ug/L
 RT: 13.585 min Scan# 2050
 Delta R.T. -0.000 min
 Lab File: VX043697.D
 Acq: 04 Nov 2024 20:56



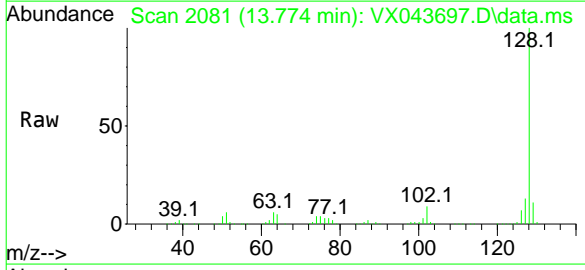
Tgt Ion:180 Resp: 116179
 Ion Ratio Lower Upper
 180 100
 182 95.5 75.9 113.9
 145 32.3 26.9 40.3





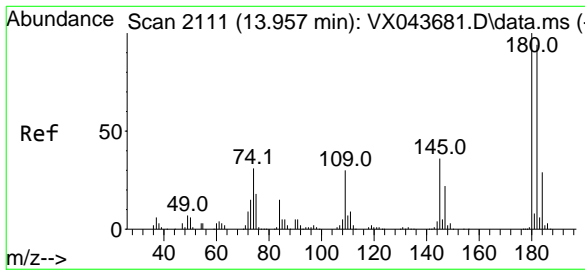
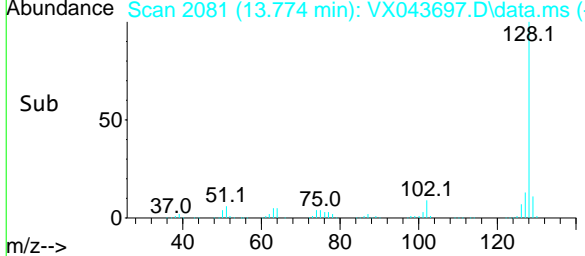
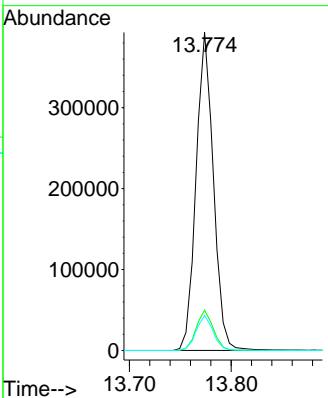
#71
 Naphthalene
 Concen: 54.209 ug/L
 RT: 13.774 min Scan# 2081
 Delta R.T. -0.000 min
 Lab File: VX043697.D
 Acq: 04 Nov 2024 20:56

Instrument : MSVOA_X
 ClientSampleId : BH6M8



Tgt Ion:128 Resp: 465222

Ion	Ratio	Lower	Upper
128	100		
127	12.5	10.2	15.2
129	10.9	8.8	13.2



#72
 1,2,3-Trichlorobenzene
 Concen: 52.175 ug/L
 RT: 13.957 min Scan# 2111
 Delta R.T. -0.000 min
 Lab File: VX043697.D
 Acq: 04 Nov 2024 20:56

Tgt Ion:180 Resp: 124616

Ion	Ratio	Lower	Upper
180	100		
182	97.2	75.8	113.8
145	34.4	28.4	42.6

