

Data Path : Z:\voasrv\HPCHEM1\MSVOA\_X\Data\VX111823\  
 Data File : VX038927.D  
 Acq On : 18 Nov 2023 14:45  
 Operator : JC/MD  
 Sample : 05404-25DL 10X  
 Misc : 5.0mL/MSVOA\_X/WATER  
 ALS Vial : 11 Sample Multiplier: 1

Instrument :  
 MSVOA\_X  
 ClientSampleId :  
 RW4-20231109DL

Quant Time: Nov 20 04:35:16 2023  
 Quant Method : Z:\voasrv\HPCHEM1\MSVOA\_X\Method\82X111623W.M  
 Quant Title : SW846 8260  
 QLast Update : Thu Nov 16 22:59:22 2023  
 Response via : Initial Calibration

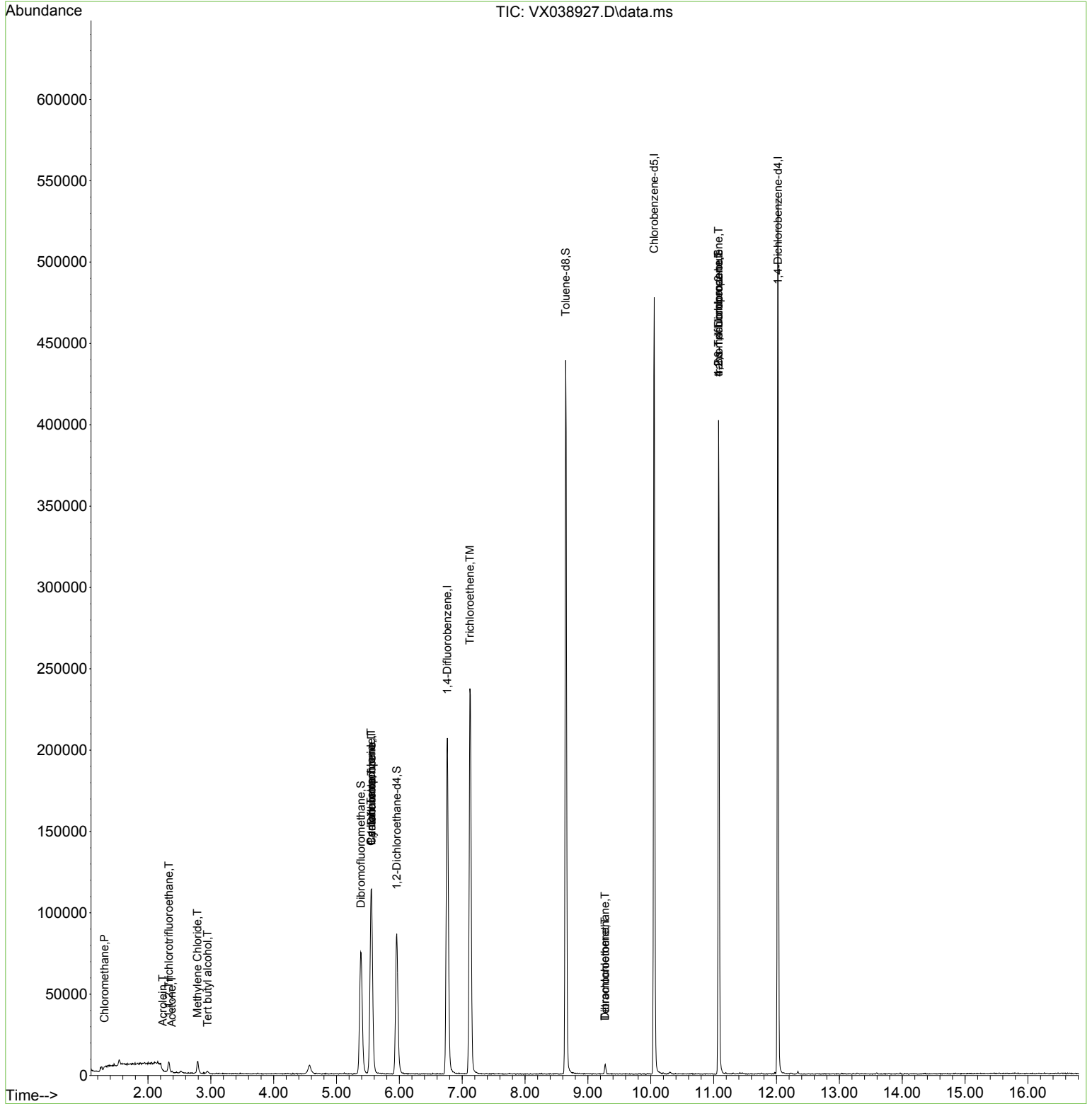
Compound	R.T.	QIon	Response	Conc	Units	Dev(Min)
-----						
Internal Standards						
1) Pentafluorobenzene	5.556	168	102994	50.000	ug/l	0.00
34) 1,4-Difluorobenzene	6.763	114	208440	50.000	ug/l	0.00
63) Chlorobenzene-d5	10.055	117	210541	50.000	ug/l	0.00
72) 1,4-Dichlorobenzene-d4	12.024	152	105416	50.000	ug/l	0.00
System Monitoring Compounds						
33) 1,2-Dichloroethane-d4	5.958	65	80409	48.451	ug/l	0.00
Spiked Amount	50.000	Range 78 - 117	Recovery	=	96.900%	
35) Dibromofluoromethane	5.385	113	66499	44.174	ug/l	0.00
Spiked Amount	50.000	Range 75 - 124	Recovery	=	88.340%	
50) Toluene-d8	8.647	98	261473	45.397	ug/l	0.00
Spiked Amount	50.000	Range 92 - 112	Recovery	=	90.800%#	
62) 4-Bromofluorobenzene	11.079	95	110805	48.058	ug/l	0.00
Spiked Amount	50.000	Range 83 - 123	Recovery	=	96.120%	
Target Compounds						
						Qvalue
3) Chloromethane	1.307	50	359	0.229	ug/l #	43
9) 1,1,2-Trichlorotrifluo...	2.331	101	2444	1.922	ug/l #	93
11) Tert butyl alcohol	2.946	59	988	2.140	ug/l #	93
13) Acrolein	2.233	56	188	0.770	ug/l #	14
16) Acetone	2.379	43	921	1.042	ug/l #	47
20) Methylene Chloride	2.788	84	3608	2.266	ug/l	95
31) Cyclohexane	5.556	56	3248	1.371	ug/l #	2
36) 1,1-Dichloropropene	5.556	75	9504	4.405	ug/l #	50
38) Carbon Tetrachloride	5.550	117	11345	5.689	ug/l #	16
44) Trichloroethene	7.123	130	89706	57.751	ug/l	95
60) Dibromochloromethane	9.275	129	1081	0.643	ug/l #	11
64) Tetrachloroethene	9.275	164	1050	0.802	ug/l	88
76) 1,2,3-Trichloropropane	11.079	75	58344	22.183	ug/l #	38
81) trans-1,4-Dichloro-2-b...	11.079	75	58344	49.204	ug/l #	5
-----						

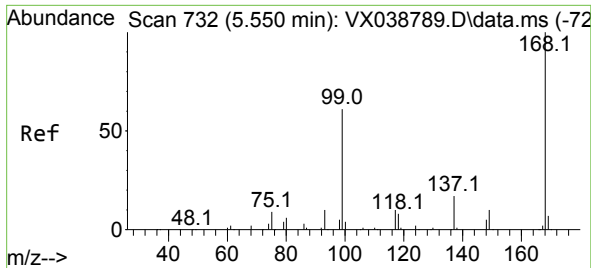
(#) = qualifier out of range (m) = manual integration (+) = signals summed

Data Path : Z:\voasrv\HPCHEM1\MSVOA\_X\Data\VX111823\  
 Data File : VX038927.D  
 Acq On : 18 Nov 2023 14:45  
 Operator : JC/MD  
 Sample : 05404-25DL 10X  
 Misc : 5.0mL/MSVOA\_X/WATER  
 ALS Vial : 11 Sample Multiplier: 1

**Instrument :**  
 MSVOA\_X  
**ClientSampleId :**  
 RW4-20231109DL

Quant Time: Nov 20 04:35:16 2023  
 Quant Method : Z:\voasrv\HPCHEM1\MSVOA\_X\Method\82X111623W.M  
 Quant Title : SW846 8260  
 QLast Update : Thu Nov 16 22:59:22 2023  
 Response via : Initial Calibration

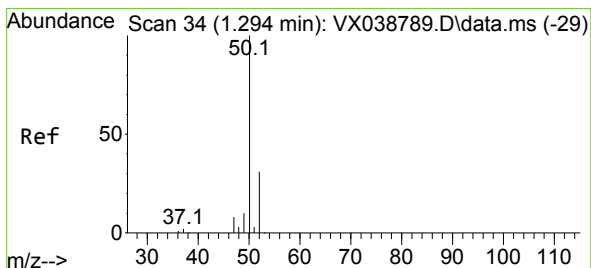
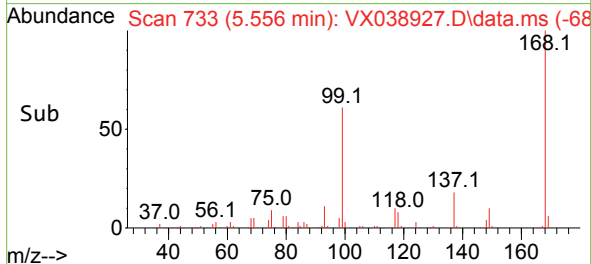
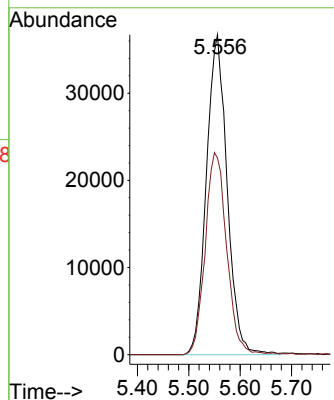
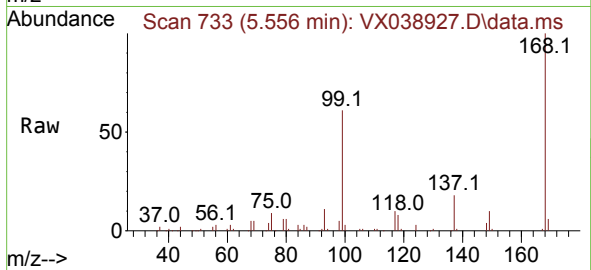




#1  
 Pentafluorobenzene  
 Concen: 50.000 ug/l  
 RT: 5.556 min Scan# 71  
 Delta R.T. 0.006 min  
 Lab File: VX038927.D  
 Acq: 18 Nov 2023 14:45

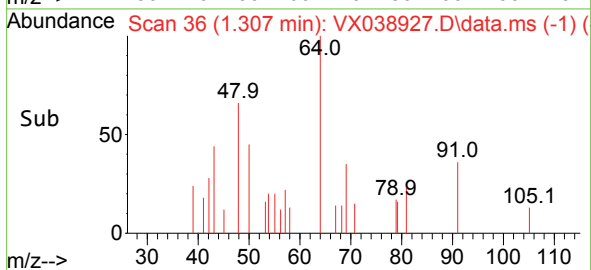
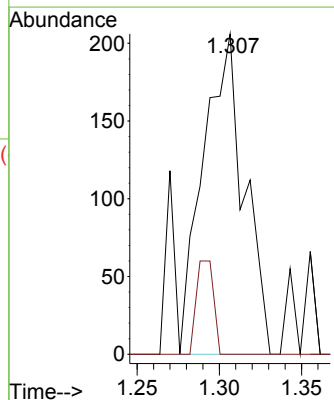
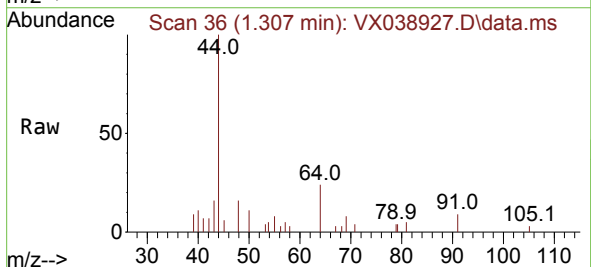
Instrument :  
 MSVOA\_X  
 ClientSampleId :  
 RW4-20231109DL

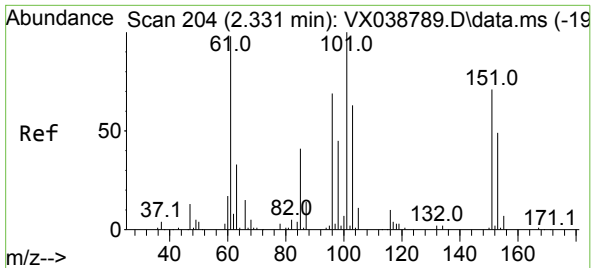
Tgt Ion:168 Resp: 102994  
 Ion Ratio Lower Upper  
 168 100  
 99 61.5 56.6 85.0



#3  
 Chloromethane  
 Concen: 0.229 ug/l  
 RT: 1.307 min Scan# 36  
 Delta R.T. 0.012 min  
 Lab File: VX038927.D  
 Acq: 18 Nov 2023 14:45

Tgt Ion: 50 Resp: 359  
 Ion Ratio Lower Upper  
 50 100  
 52 0.0 25.5 38.3#



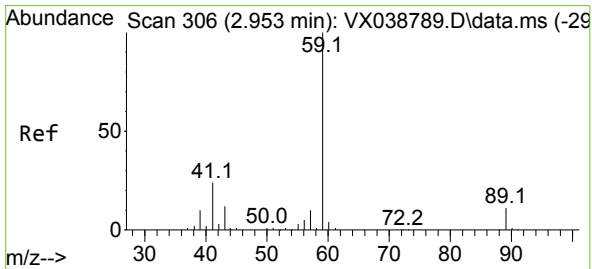
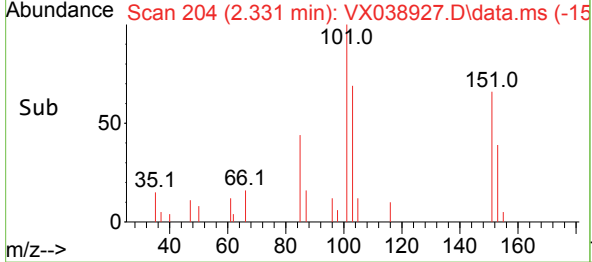
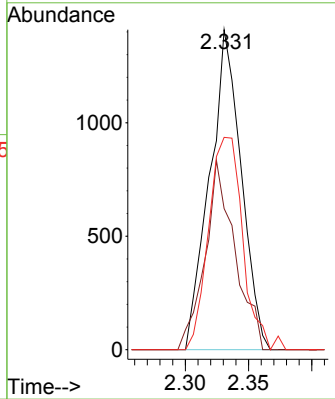
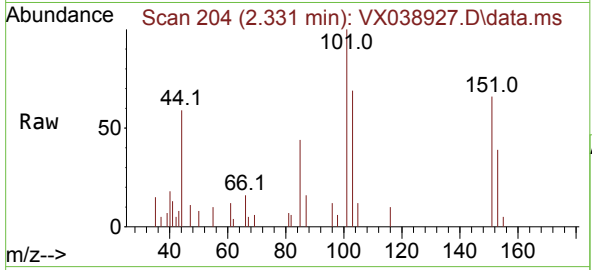


#9  
 1,1,2-Trichlorotrifluoroethane  
 Concen: 1.922 ug/l  
 RT: 2.331 min Scan# 204  
 Delta R.T. -0.000 min  
 Lab File: VX038927.D  
 Acq: 18 Nov 2023 14:45

Instrument : MSVOA\_X  
 ClientSampleId : RW4-20231109DL

Tgt Ion:101 Resp: 2444

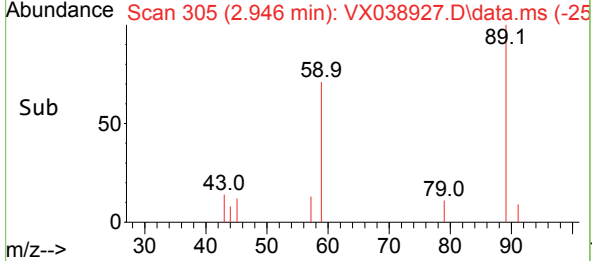
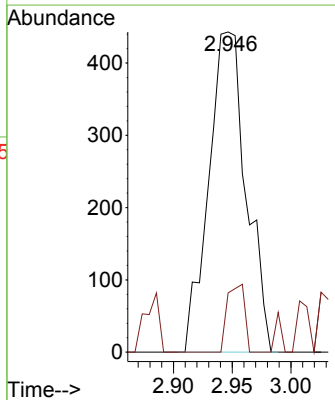
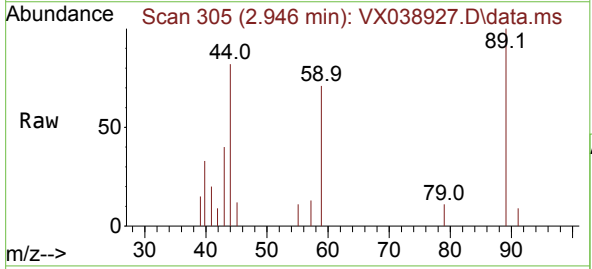
Ion	Ratio	Lower	Upper
101	100		
85	56.0	37.0	55.6#
151	71.8	58.6	87.8

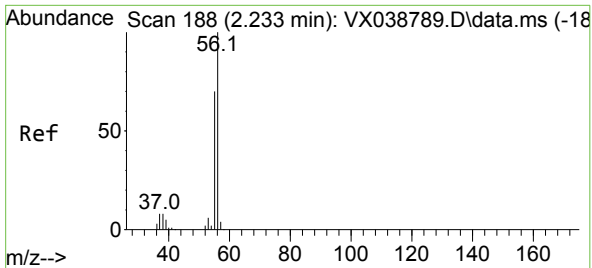


#11  
 Tert butyl alcohol  
 Concen: 2.140 ug/l  
 RT: 2.946 min Scan# 305  
 Delta R.T. -0.006 min  
 Lab File: VX038927.D  
 Acq: 18 Nov 2023 14:45

Tgt Ion: 59 Resp: 988

Ion	Ratio	Lower	Upper
59	100		
57	9.8	6.0	9.0#

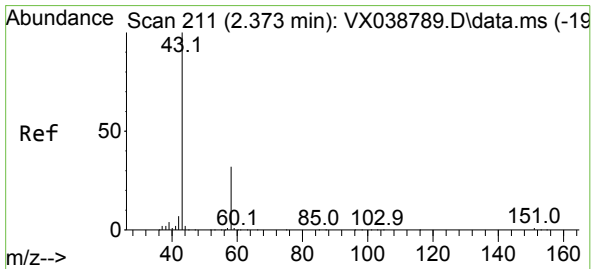
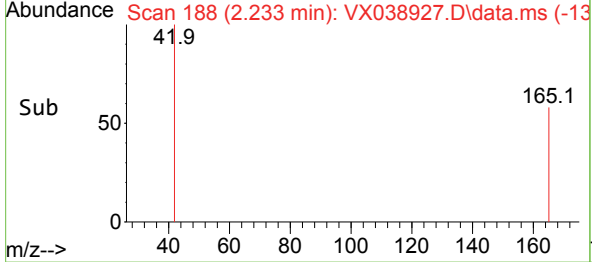
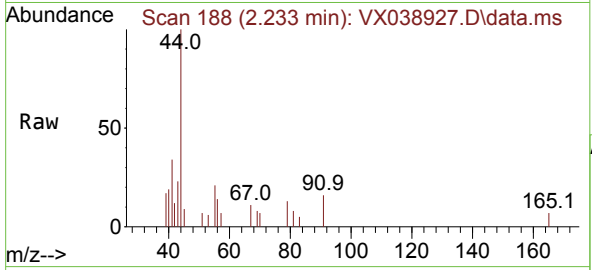




#13  
 Acrolein  
 Concen: 0.770 ug/l  
 RT: 2.233 min Scan# 11  
 Delta R.T. -0.000 min  
 Lab File: VX038927.D  
 Acq: 18 Nov 2023 14:45

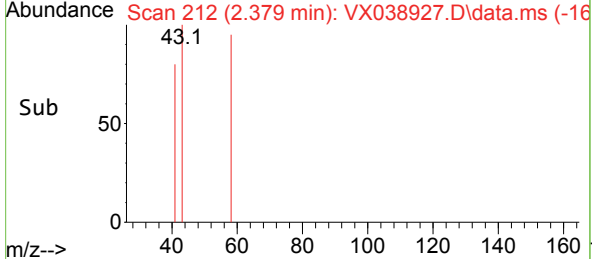
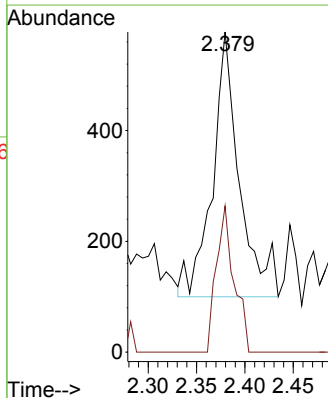
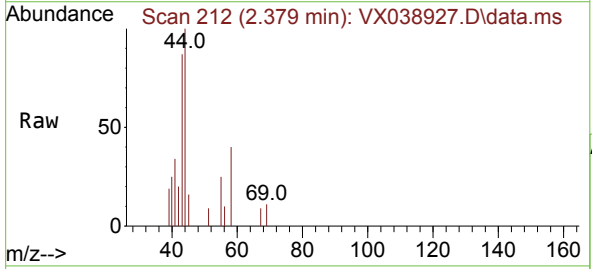
Instrument : MSVOA\_X  
 ClientSampleId : RW4-20231109DL

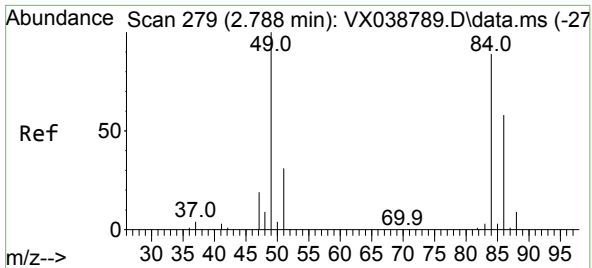
Tgt Ion: 56 Resp: 188  
 Ion Ratio Lower Upper  
 56 100  
 55 0.0 57.1 85.7#



#16  
 Acetone  
 Concen: 1.042 ug/l  
 RT: 2.379 min Scan# 212  
 Delta R.T. 0.006 min  
 Lab File: VX038927.D  
 Acq: 18 Nov 2023 14:45

Tgt Ion: 43 Resp: 921  
 Ion Ratio Lower Upper  
 43 100  
 58 55.2 21.9 32.9#

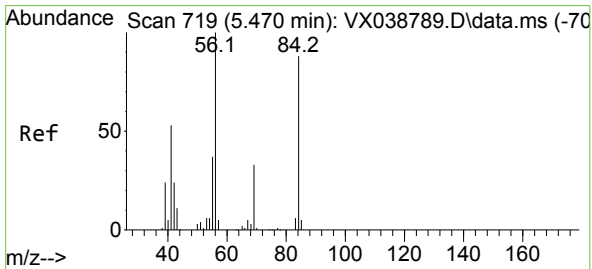
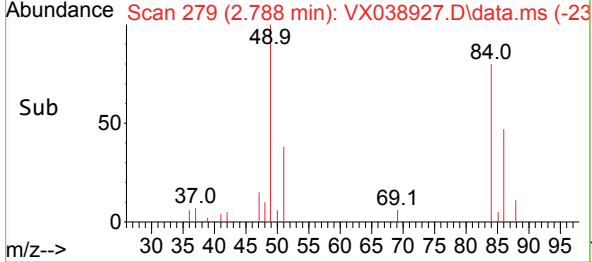
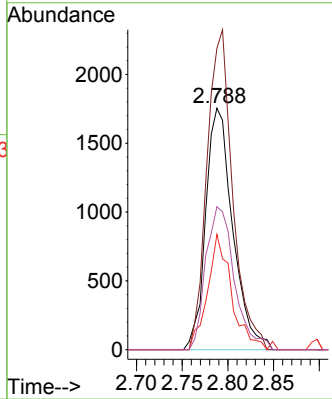
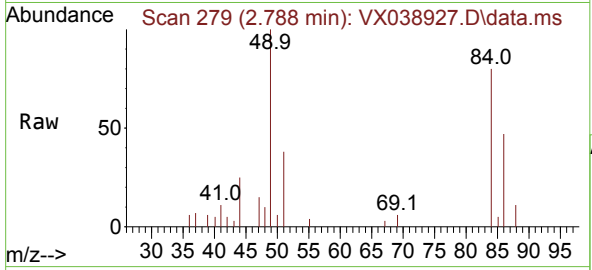




#20  
 Methylene Chloride  
 Concen: 2.266 ug/l  
 RT: 2.788 min Scan# 21  
 Delta R.T. -0.000 min  
 Lab File: VX038927.D  
 Acq: 18 Nov 2023 14:45

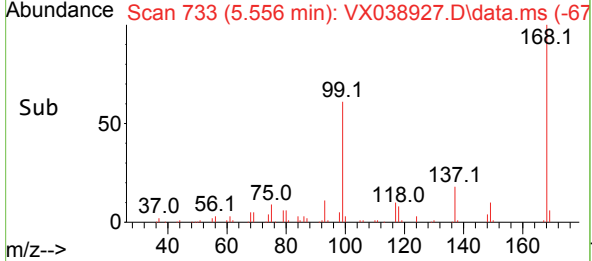
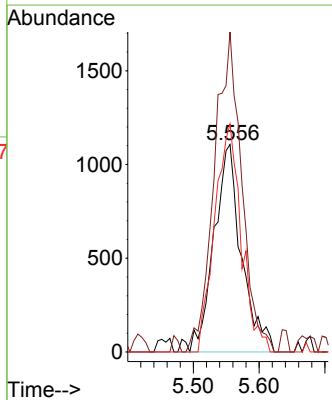
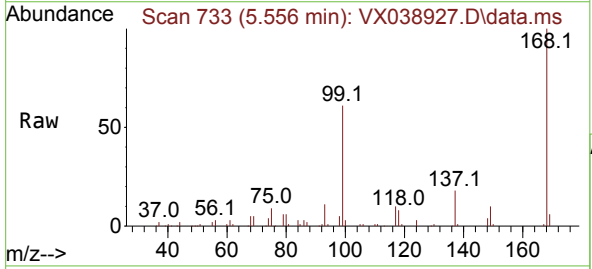
Instrument : MSVOA\_X  
 ClientSampleId : RW4-20231109DL

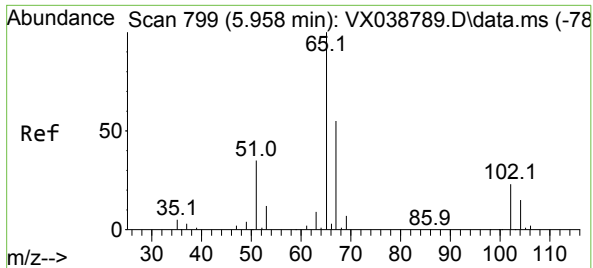
Tgt Ion	Resp	Lower	Upper
84	3608		
49	124.8	103.6	155.4
51	47.7	33.8	50.6
86	59.3	49.4	74.0



#31  
 Cyclohexane  
 Concen: 1.371 ug/l  
 RT: 5.556 min Scan# 733  
 Delta R.T. 0.085 min  
 Lab File: VX038927.D  
 Acq: 18 Nov 2023 14:45

Tgt Ion	Resp	Lower	Upper
56	3248		
69	154.2	23.4	35.2#
84	127.7	65.9	98.9#

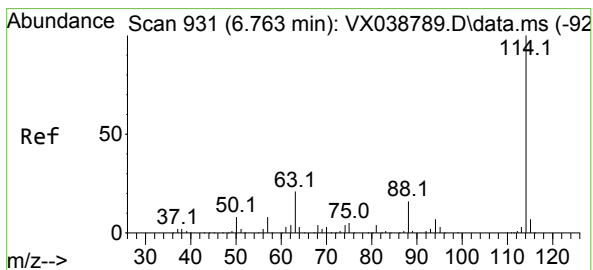
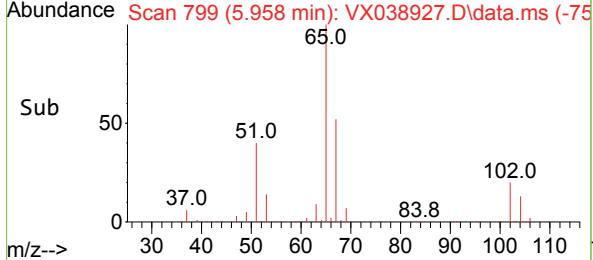
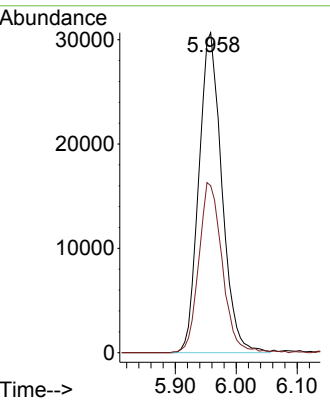
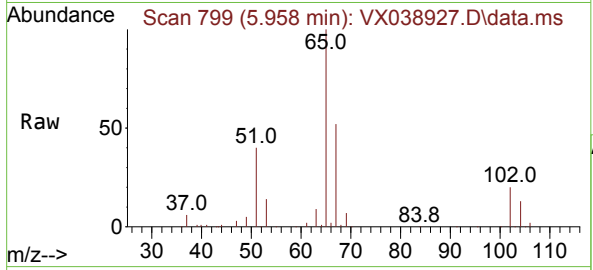




#33  
 1,2-Dichloroethane-d4  
 Concen: 48.451 ug/l  
 RT: 5.958 min Scan# 799  
 Delta R.T. -0.000 min  
 Lab File: VX038927.D  
 Acq: 18 Nov 2023 14:45

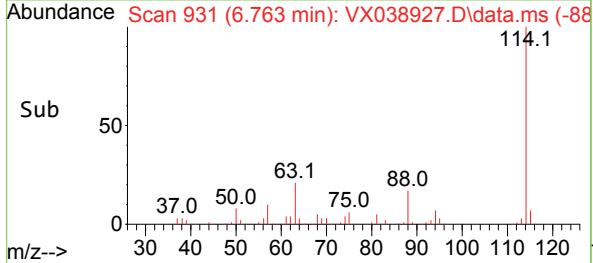
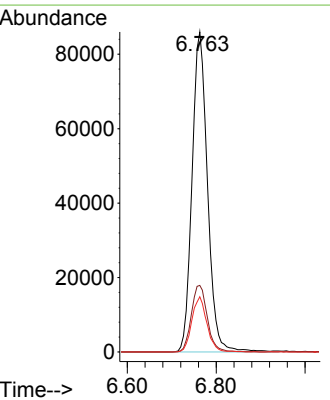
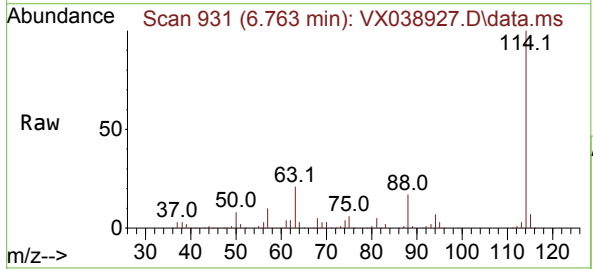
Instrument : MSVOA\_X  
 ClientSampleId : RW4-20231109DL

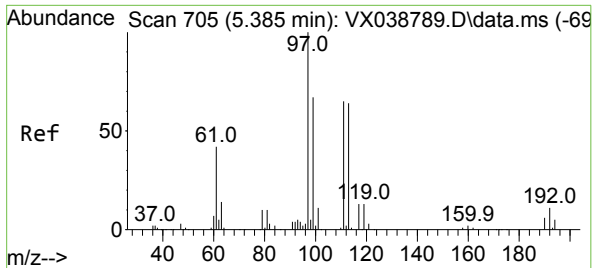
Tgt Ion: 65 Resp: 80409  
 Ion Ratio Lower Upper  
 65 100  
 67 54.2 0.0 100.2



#34  
 1,4-Difluorobenzene  
 Concen: 50.000 ug/l  
 RT: 6.763 min Scan# 931  
 Delta R.T. -0.000 min  
 Lab File: VX038927.D  
 Acq: 18 Nov 2023 14:45

Tgt Ion: 114 Resp: 208440  
 Ion Ratio Lower Upper  
 114 100  
 63 20.8 0.0 45.0  
 88 17.3 0.0 36.6

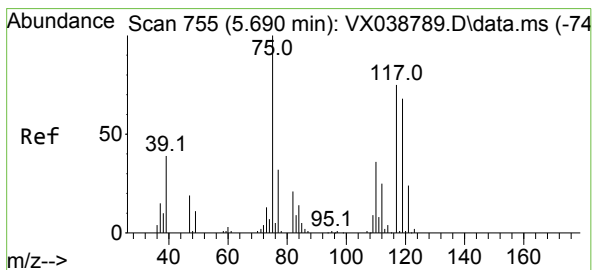
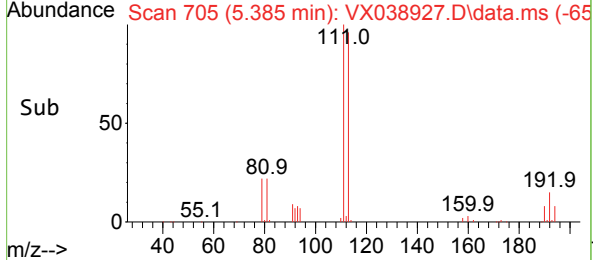
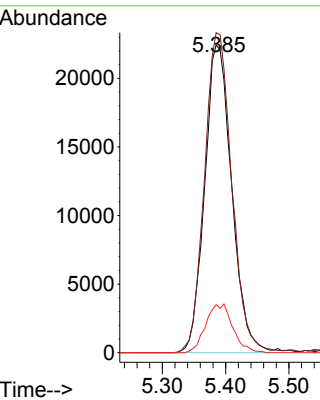
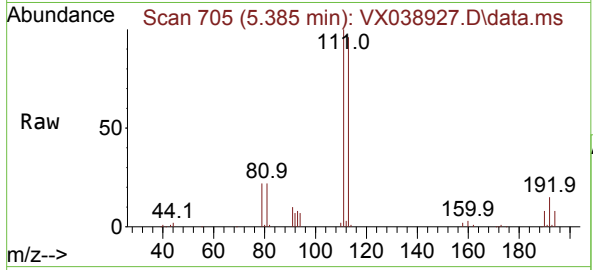




#35  
 Dibromofluoromethane  
 Concen: 44.174 ug/l  
 RT: 5.385 min Scan# 705  
 Delta R.T. -0.000 min  
 Lab File: VX038927.D  
 Acq: 18 Nov 2023 14:45

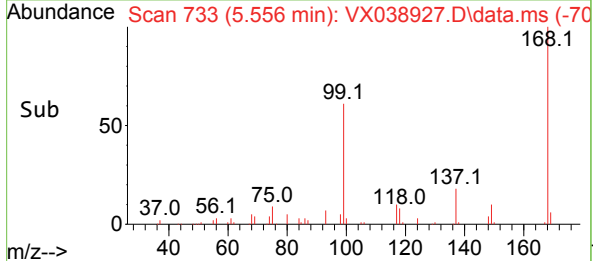
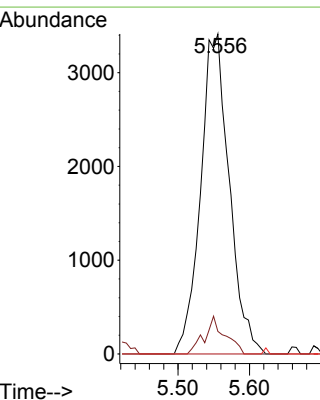
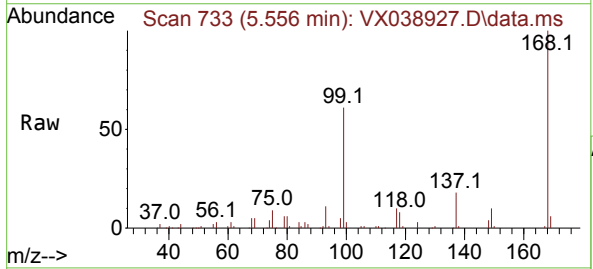
Instrument : MSVOA\_X  
 ClientSampleId : RW4-20231109DL

Tgt Ion	Resp	Lower	Upper
113	100		
111	105.1	82.9	124.3
192	15.8	13.3	19.9

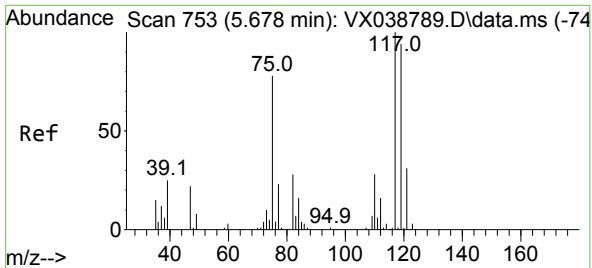


#36  
 1,1-Dichloropropene  
 Concen: 4.405 ug/l  
 RT: 5.556 min Scan# 733  
 Delta R.T. -0.134 min  
 Lab File: VX038927.D  
 Acq: 18 Nov 2023 14:45

Tgt Ion	Resp	Lower	Upper
75	100		
110	8.3	17.0	50.9#
77	0.0	24.7	37.1#



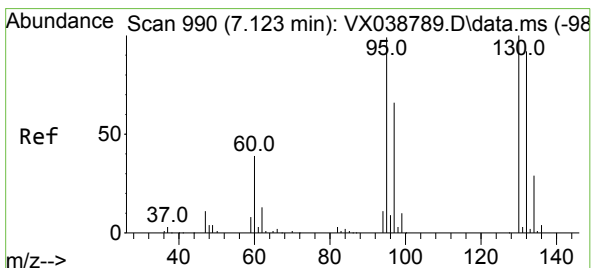
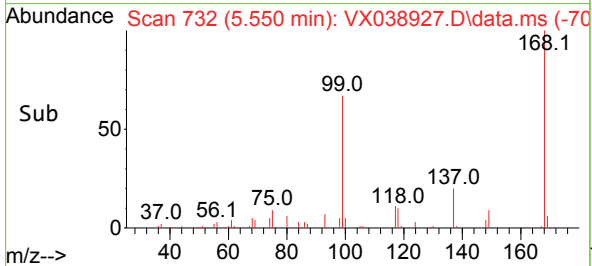
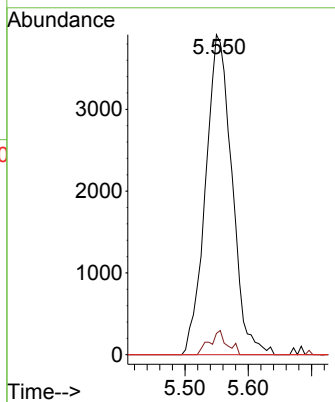
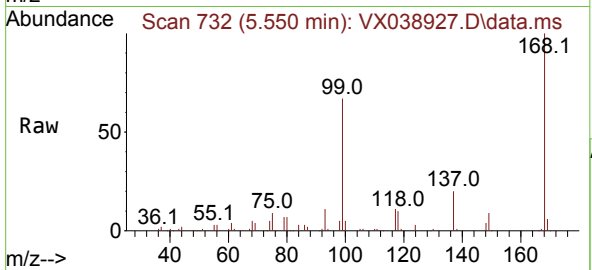




#38  
 Carbon Tetrachloride  
 Concen: 5.689 ug/l  
 RT: 5.550 min Scan# 711  
 Delta R.T. -0.128 min  
 Lab File: VX038927.D  
 Acq: 18 Nov 2023 14:45

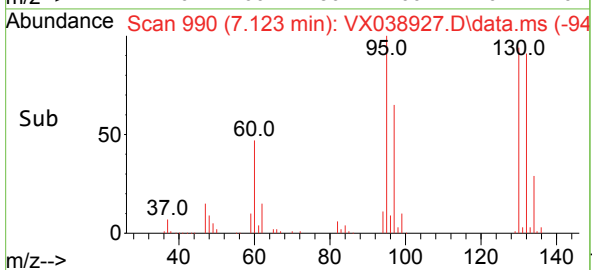
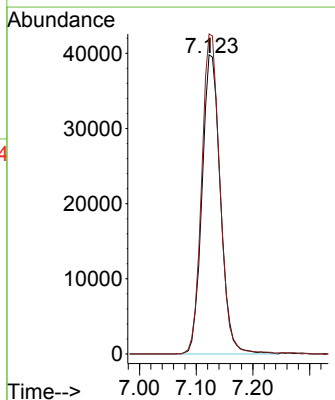
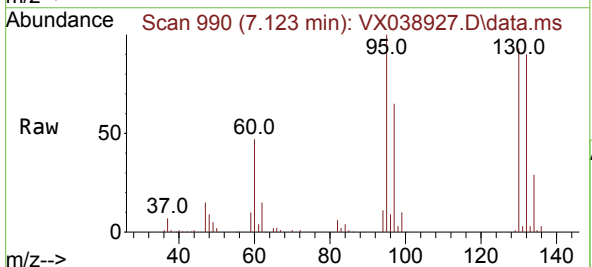
Instrument : MSVOA\_X  
 ClientSampleId : RW4-20231109DL

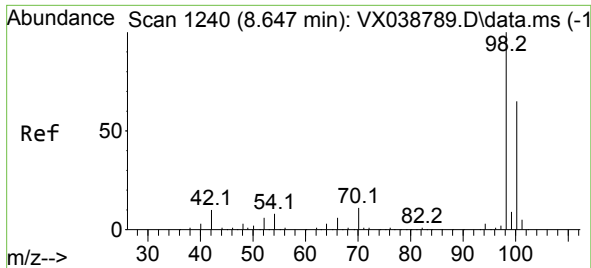
Tgt Ion	Resp	Lower	Upper
117	11345		
119	6.7	78.2	117.2#
121	0.0	24.4	36.6#



#44  
 Trichloroethene  
 Concen: 57.751 ug/l  
 RT: 7.123 min Scan# 990  
 Delta R.T. -0.000 min  
 Lab File: VX038927.D  
 Acq: 18 Nov 2023 14:45

Tgt Ion	Resp	Lower	Upper
130	89706		
95	106.8	0.0	204.4

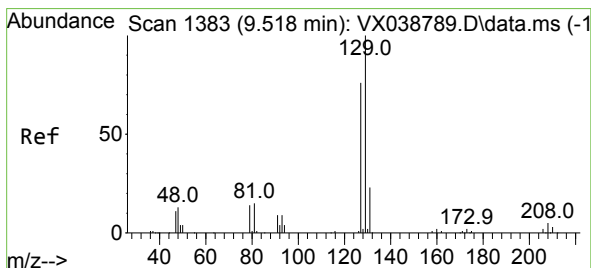
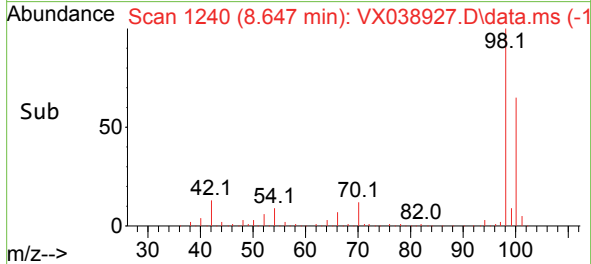
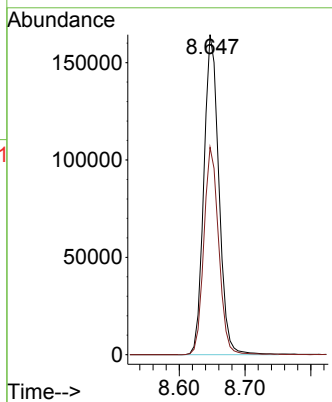
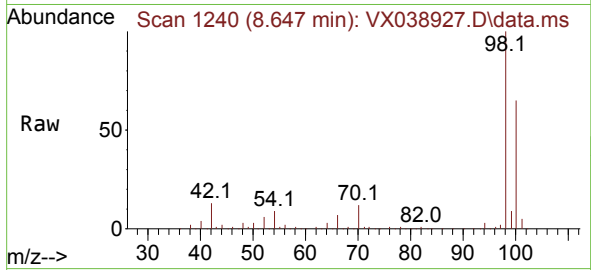




#50  
 Toluene-d8  
 Concen: 45.397 ug/l  
 RT: 8.647 min Scan# 111  
 Delta R.T. -0.000 min  
 Lab File: VX038927.D  
 Acq: 18 Nov 2023 14:45

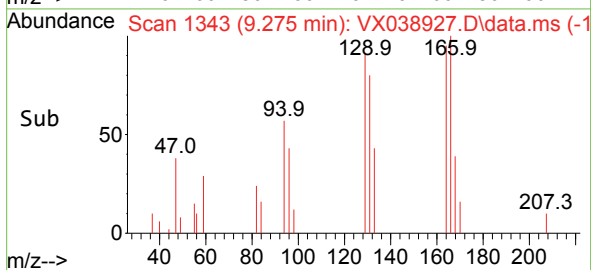
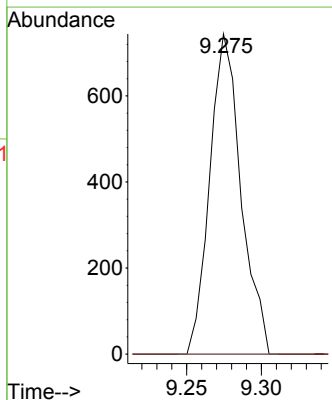
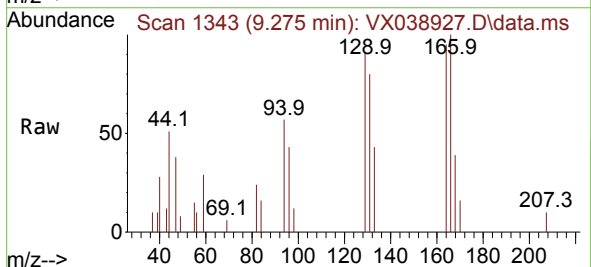
Instrument :  
 MSVOA\_X  
 ClientSampleId :  
 RW4-20231109DL

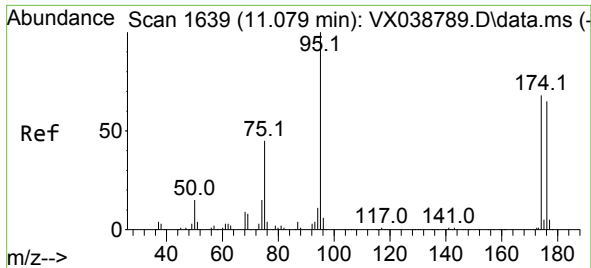
Tgt Ion: 98 Resp: 261473  
 Ion Ratio Lower Upper  
 98 100  
 100 64.1 53.1 79.7



#60  
 Dibromochloromethane  
 Concen: 0.643 ug/l  
 RT: 9.275 min Scan# 1343  
 Delta R.T. -0.244 min  
 Lab File: VX038927.D  
 Acq: 18 Nov 2023 14:45

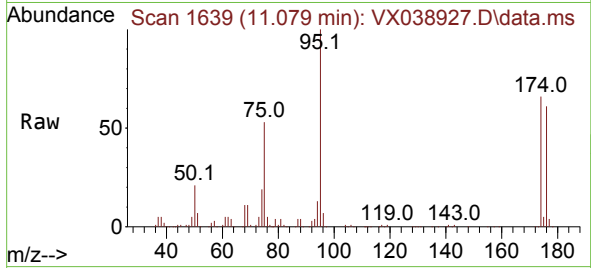
Tgt Ion: 129 Resp: 1081  
 Ion Ratio Lower Upper  
 129 100  
 127 0.0 38.8 116.4#



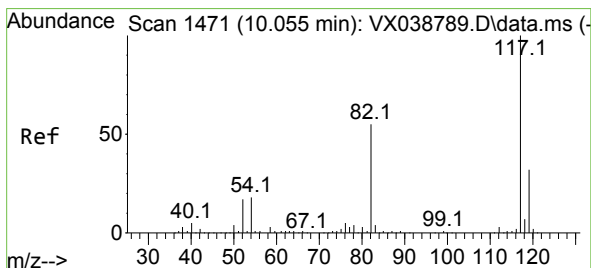
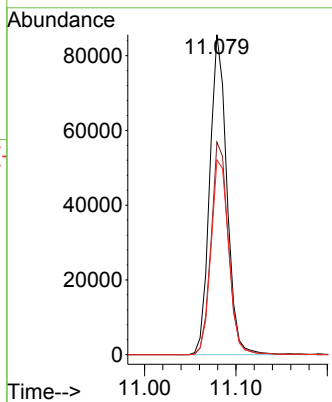
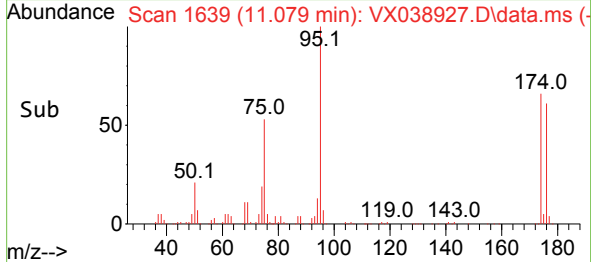


#62  
 4-Bromofluorobenzene  
 Concen: 48.058 ug/l  
 RT: 11.079 min Scan# 11  
 Delta R.T. -0.000 min  
 Lab File: VX038927.D  
 Acq: 18 Nov 2023 14:45

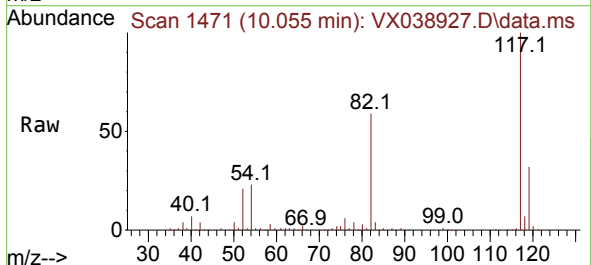
Instrument :  
 MSVOA\_X  
 ClientSampleId :  
 RW4-20231109DL



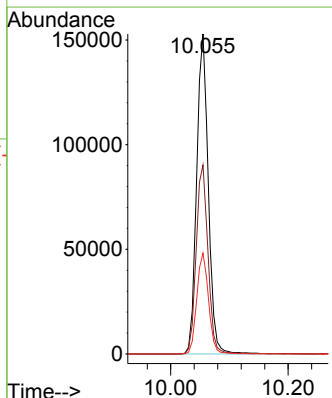
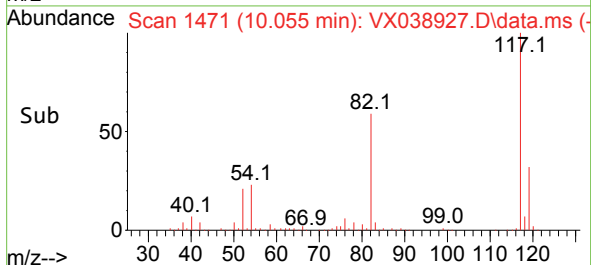
Tgt Ion: 95 Resp: 110805  
 Ion Ratio Lower Upper  
 95 100  
 174 67.2 0.0 135.6  
 176 63.7 0.0 131.0

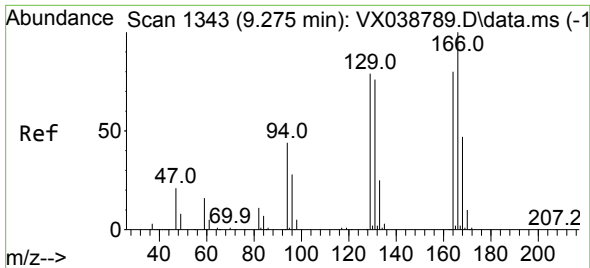


#63  
 Chlorobenzene-d5  
 Concen: 50.000 ug/l  
 RT: 10.055 min Scan# 1471  
 Delta R.T. -0.000 min  
 Lab File: VX038927.D  
 Acq: 18 Nov 2023 14:45



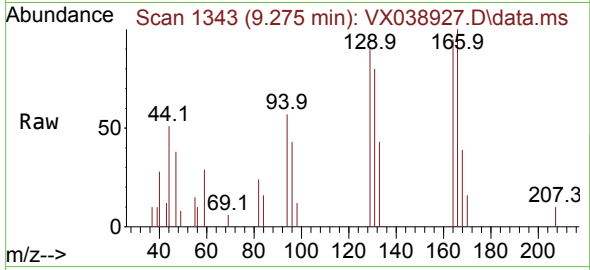
Tgt Ion: 117 Resp: 210541  
 Ion Ratio Lower Upper  
 117 100  
 82 59.0 46.2 69.4  
 119 31.5 25.5 38.3





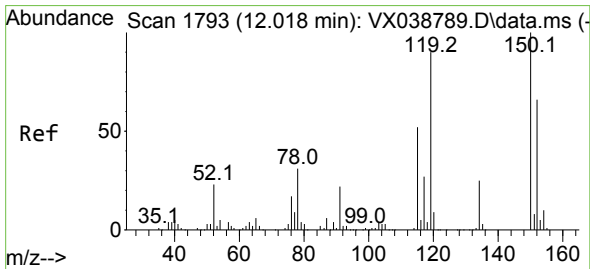
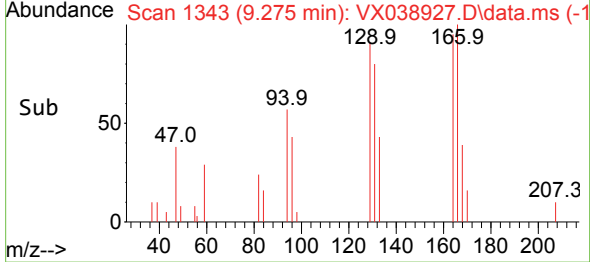
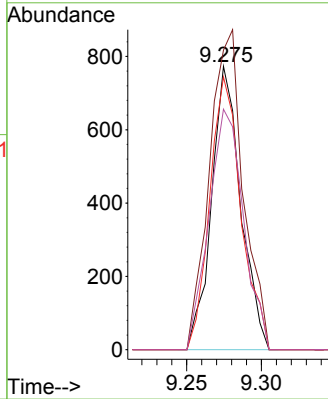
#64  
 Tetrachloroethene  
 Concen: 0.802 ug/l  
 RT: 9.275 min Scan# 11  
 Delta R.T. -0.000 min  
 Lab File: VX038927.D  
 Acq: 18 Nov 2023 14:45

Instrument :  
 MSVOA\_X  
 ClientSampleId :  
 RW4-20231109DL



Tgt Ion:164 Resp: 1050

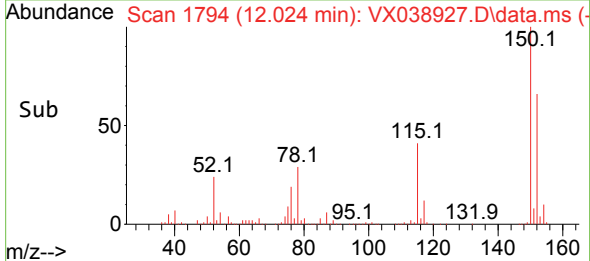
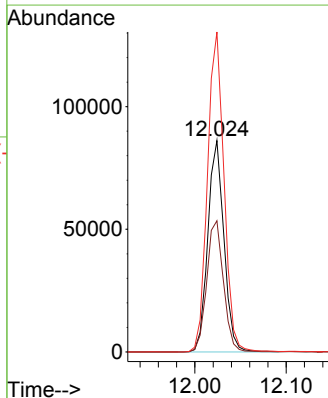
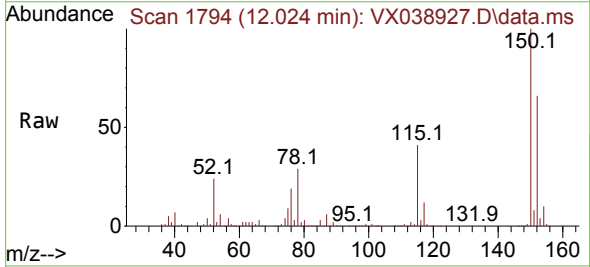
Ion	Ratio	Lower	Upper
164	100		
166	105.7	102.7	154.1
129	96.2	80.4	120.6
131	84.9	76.5	114.7

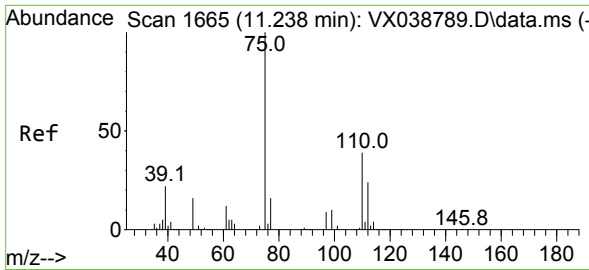


#72  
 1,4-Dichlorobenzene-d4  
 Concen: 50.000 ug/l  
 RT: 12.024 min Scan# 1794  
 Delta R.T. 0.006 min  
 Lab File: VX038927.D  
 Acq: 18 Nov 2023 14:45

Tgt Ion:152 Resp: 105416

Ion	Ratio	Lower	Upper
152	100		
115	64.5	43.3	129.9
150	155.1	0.0	345.0

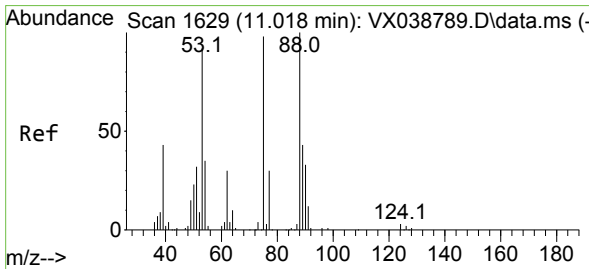
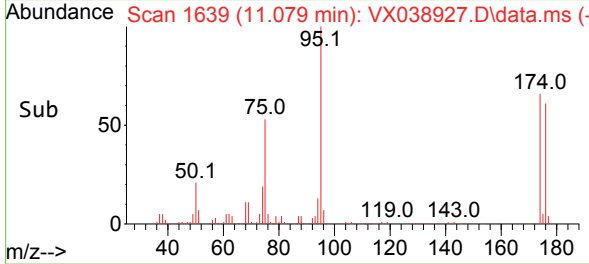
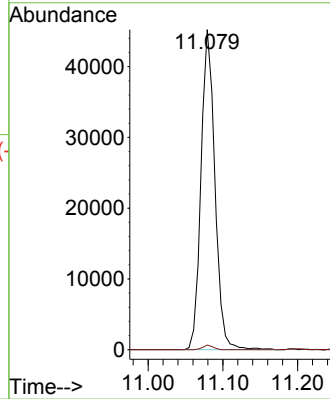
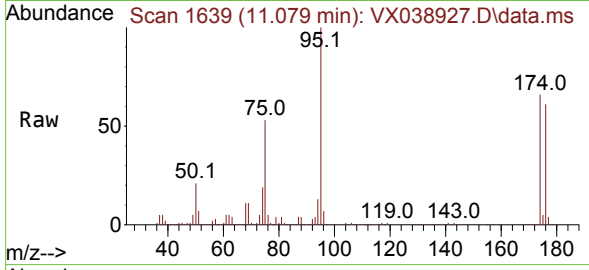




#76  
 1,2,3-Trichloropropane  
 Concen: 22.183 ug/l  
 RT: 11.079 min Scan# 1639  
 Delta R.T. -0.159 min  
 Lab File: VX038927.D  
 Acq: 18 Nov 2023 14:45

Instrument : MSVOA\_X  
 ClientSampleId : RW4-20231109DL

Tgt Ion: 75 Resp: 58344  
 Ion Ratio Lower Upper  
 75 100  
 77 1.1 19.1 57.5#



#81  
 trans-1,4-Dichloro-2-butene  
 Concen: 49.204 ug/l  
 RT: 11.079 min Scan# 1639  
 Delta R.T. 0.061 min  
 Lab File: VX038927.D  
 Acq: 18 Nov 2023 14:45

Tgt Ion: 75 Resp: 58344  
 Ion Ratio Lower Upper  
 75 100  
 53 0.0 90.5 135.7#  
 89 0.1 36.9 55.3#

