

Data Path : Z:\voasrv\HPCHEM1\MSVOA_X\Data\VX111823\
 Data File : VX038940.D
 Acq On : 18 Nov 2023 19:46
 Operator : JC/MD
 Sample : 05428-03
 Misc : 5.0mL/MSVOA_X/WATER
 ALS Vial : 24 Sample Multiplier: 1

Instrument :
 MSVOA_X
 ClientSampleId :

Quant Time: Nov 20 04:39:52 2023
 Quant Method : Z:\voasrv\HPCHEM1\MSVOA_X\Method\82X111623W.M
 Quant Title : SW846 8260
 QLast Update : Thu Nov 16 22:59:22 2023
 Response via : Initial Calibration

Compound	R.T.	QIon	Response	Conc	Units	Dev(Min)

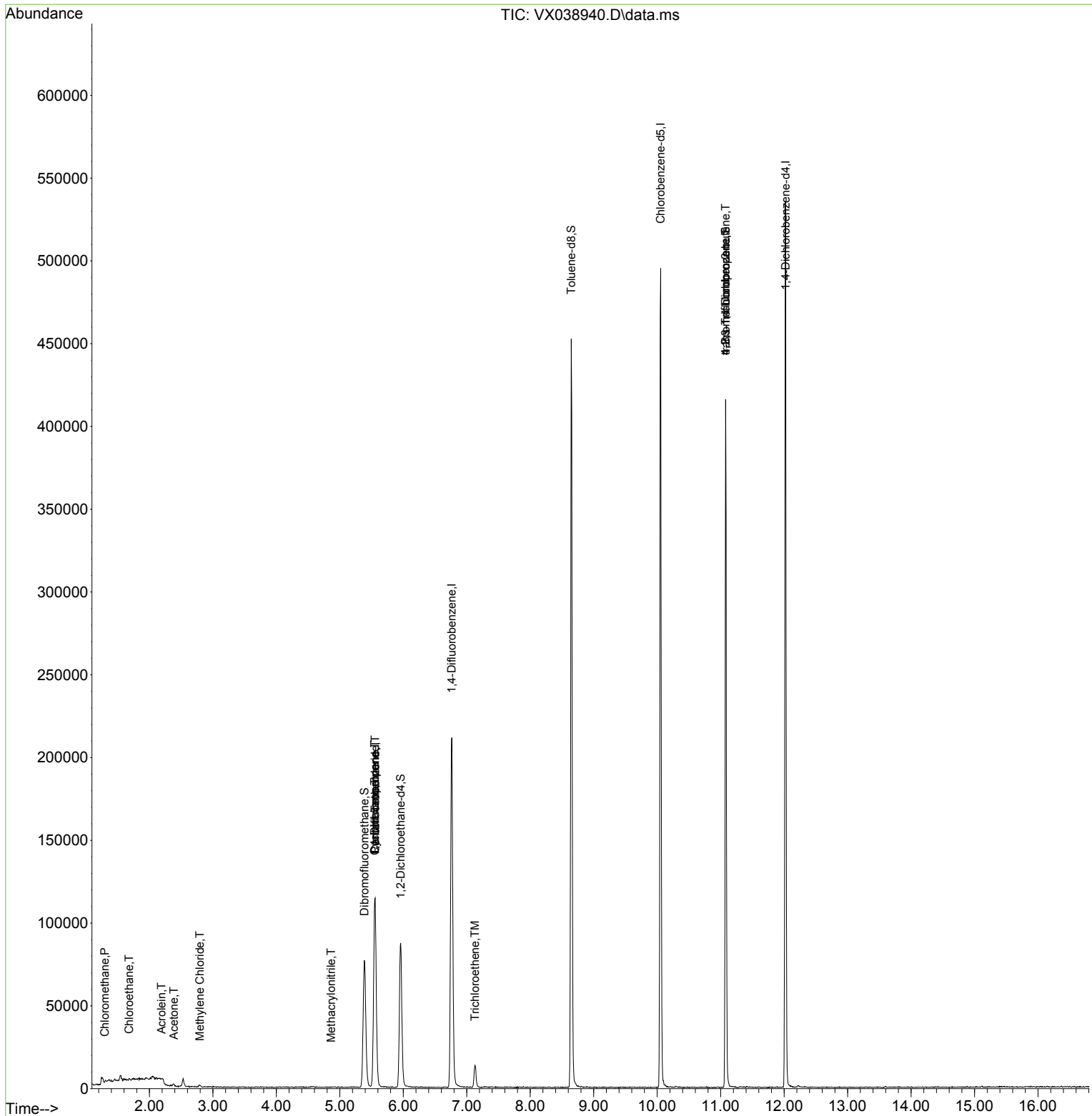
Internal Standards						
1) Pentafluorobenzene	5.556	168	101971	50.000	ug/l	0.00
34) 1,4-Difluorobenzene	6.763	114	212547	50.000	ug/l	0.00
63) Chlorobenzene-d5	10.055	117	219561	50.000	ug/l	0.00
72) 1,4-Dichlorobenzene-d4	12.024	152	107381	50.000	ug/l	0.00
System Monitoring Compounds						
33) 1,2-Dichloroethane-d4	5.958	65	83619	50.891	ug/l	0.00
Spiked Amount	50.000	Range 78 - 117	Recovery	=	101.780%	
35) Dibromofluoromethane	5.385	113	68519	44.636	ug/l	0.00
Spiked Amount	50.000	Range 75 - 124	Recovery	=	89.280%	
50) Toluene-d8	8.647	98	267613	45.565	ug/l	0.00
Spiked Amount	50.000	Range 92 - 112	Recovery	=	91.120%#	
62) 4-Bromofluorobenzene	11.079	95	116283	49.459	ug/l	0.00
Spiked Amount	50.000	Range 83 - 123	Recovery	=	98.920%	
Target Compounds						
					Qvalue	
3) Chloromethane	1.294	50	392	0.252	ug/l #	43
6) Chloroethane	1.678	64	287	0.336	ug/l #	43
13) Acrolein	2.191	56	421	1.741	ug/l	86
16) Acetone	2.386	43	1520	1.738	ug/l #	80
20) Methylene Chloride	2.794	84	514	0.326	ug/l	97
31) Cyclohexane	5.550	56	2905	1.238	ug/l #	35
36) 1,1-Dichloropropene	5.550	75	9862	4.483	ug/l #	47
38) Carbon Tetrachloride	5.556	117	11680	5.744	ug/l #	15
41) Methacrylonitrile	4.861	41	426	0.287	ug/l #	36
44) Trichloroethene	7.129	130	5222	3.297	ug/l	93
76) 1,2,3-Trichloropropane	11.079	75	61447	22.935	ug/l #	39
81) trans-1,4-Dichloro-2-b...	11.079	75	61447	50.873	ug/l #	5

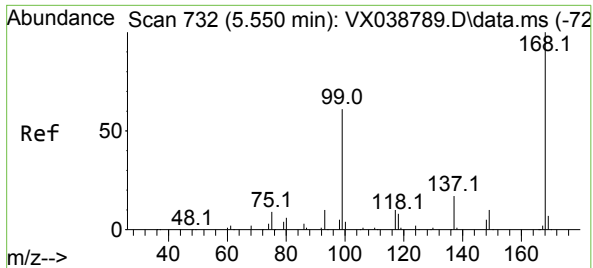
(#) = qualifier out of range (m) = manual integration (+) = signals summed

Data Path : Z:\voasrv\HPCHEM1\MSVOA_X\Data\VX111823\
 Data File : VX038940.D
 Acq On : 18 Nov 2023 19:46
 Operator : JC/MD
 Sample : 05428-03
 Misc : 5.0mL/MSVOA_X/WATER
 ALS Vial : 24 Sample Multiplier: 1

Instrument :
 MSVOA_X
 ClientSampleId :

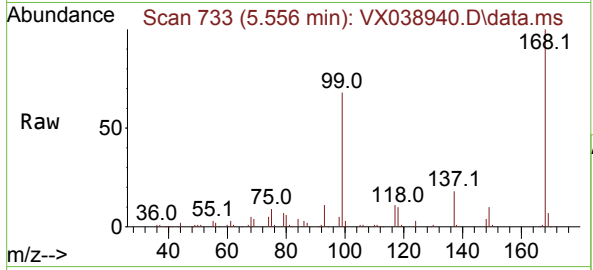
Quant Time: Nov 20 04:39:52 2023
 Quant Method : Z:\voasrv\HPCHEM1\MSVOA_X\Method\82X111623W.M
 Quant Title : SW846 8260
 QLast Update : Thu Nov 16 22:59:22 2023
 Response via : Initial Calibration



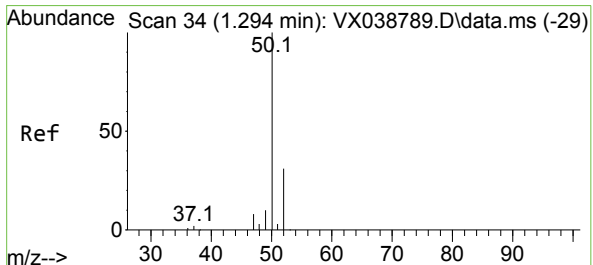
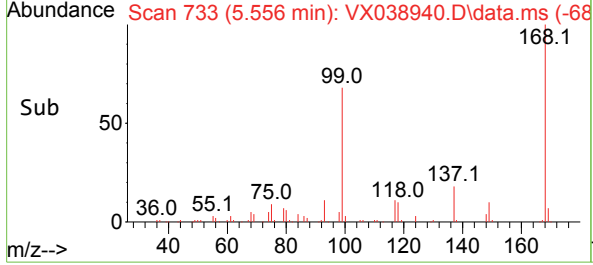
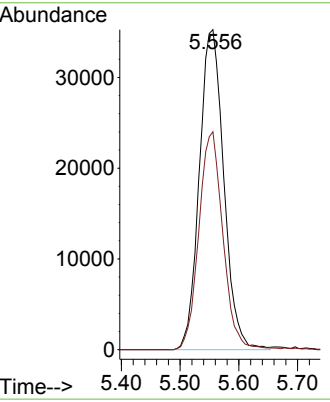


#1
 Pentafluorobenzene
 Concen: 50.000 ug/l
 RT: 5.556 min Scan# 71
 Delta R.T. 0.006 min
 Lab File: VX038940.D
 Acq: 18 Nov 2023 19:46

Instrument : MSVOA_X
 ClientSampleId :

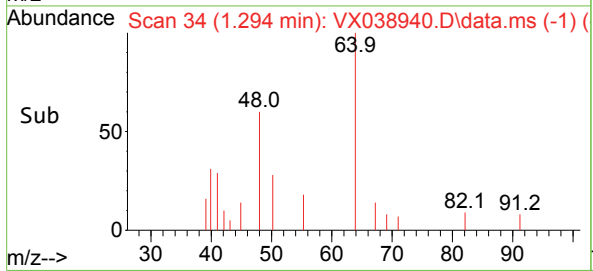
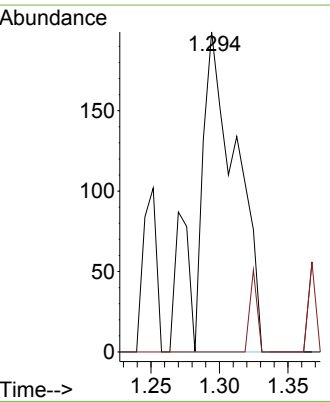
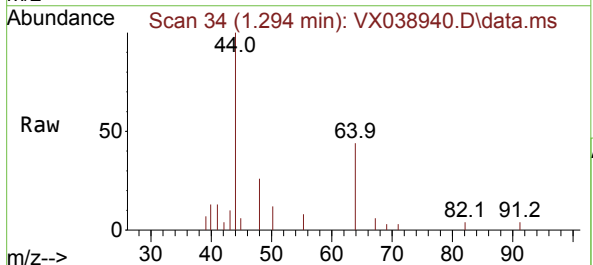


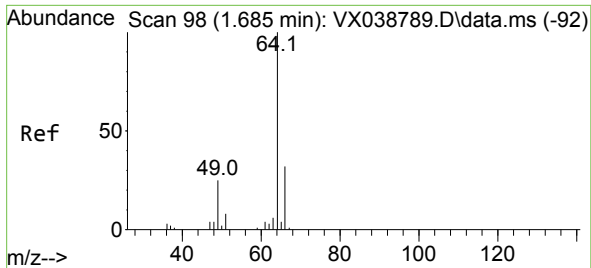
Tgt Ion:168 Resp: 101971
 Ion Ratio Lower Upper
 168 100
 99 68.1 56.6 85.0



#3
 Chloromethane
 Concen: 0.252 ug/l
 RT: 1.294 min Scan# 34
 Delta R.T. 0.000 min
 Lab File: VX038940.D
 Acq: 18 Nov 2023 19:46

Tgt Ion: 50 Resp: 392
 Ion Ratio Lower Upper
 50 100
 52 0.0 25.5 38.3#

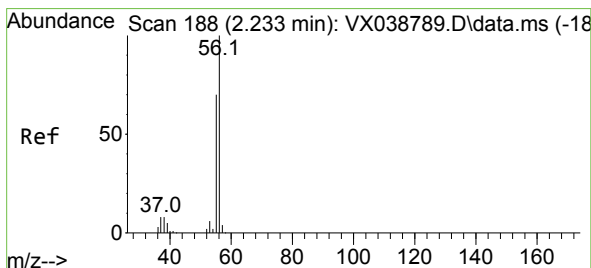
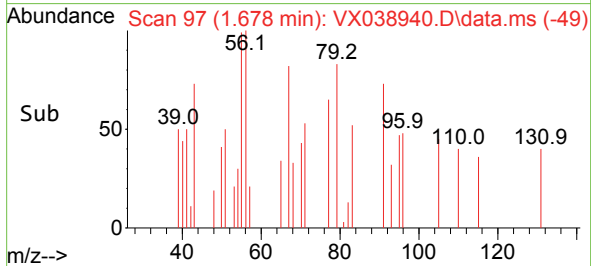
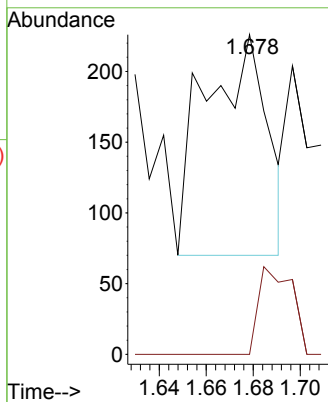
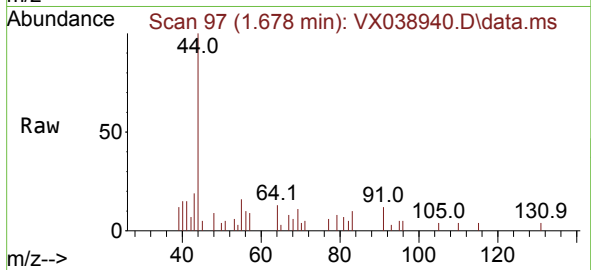




#6
 Chloroethane
 Concen: 0.336 ug/l
 RT: 1.678 min Scan# 91
 Delta R.T. -0.007 min
 Lab File: VX038940.D
 Acq: 18 Nov 2023 19:46

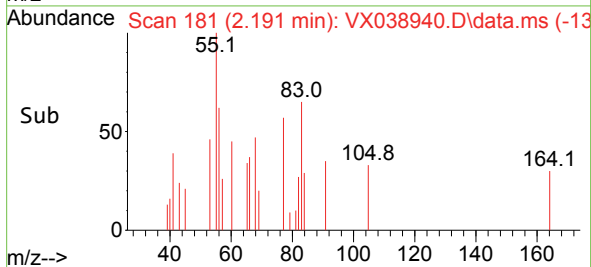
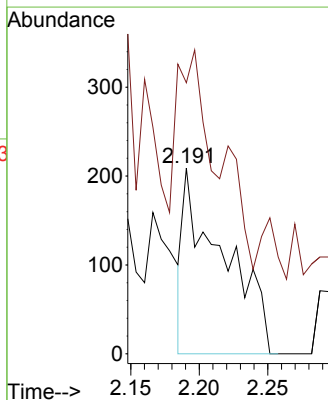
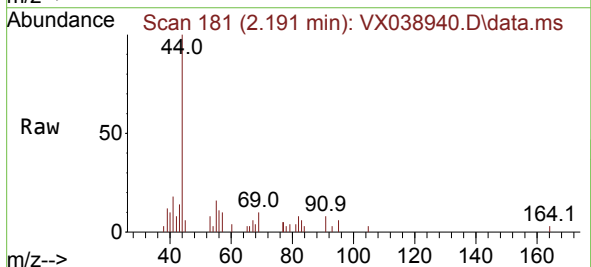
Instrument :
 MSVOA_X
 ClientSampleId :

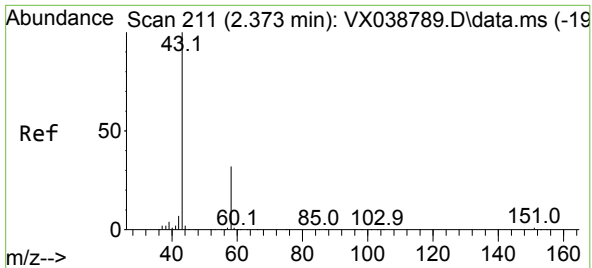
Tgt Ion: 64 Resp: 287
 Ion Ratio Lower Upper
 64 100
 66 0.0 25.1 37.7#



#13
 Acrolein
 Concen: 1.741 ug/l
 RT: 2.191 min Scan# 181
 Delta R.T. -0.043 min
 Lab File: VX038940.D
 Acq: 18 Nov 2023 19:46

Tgt Ion: 56 Resp: 421
 Ion Ratio Lower Upper
 56 100
 55 59.4 57.1 85.7

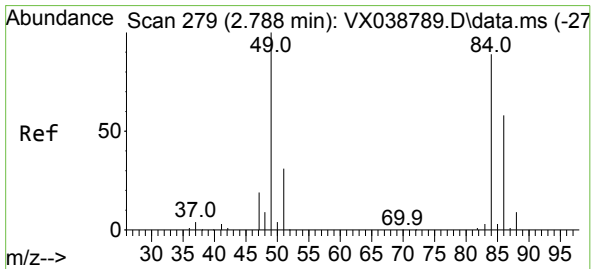
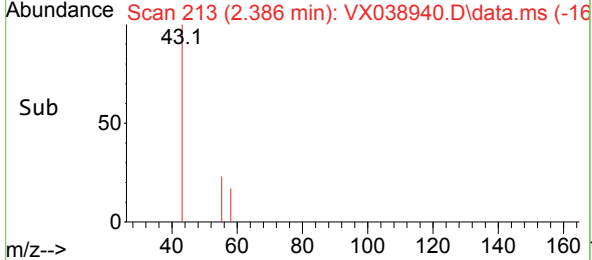
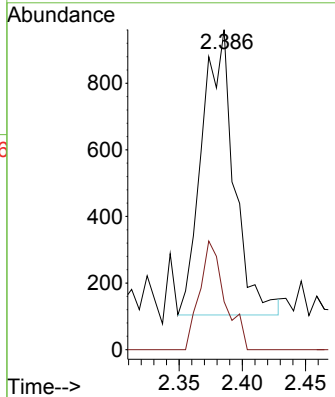
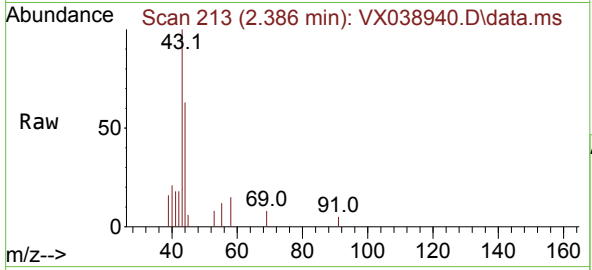




#16
 Acetone
 Concen: 1.738 ug/l
 RT: 2.386 min Scan# 21
 Delta R.T. 0.012 min
 Lab File: VX038940.D
 Acq: 18 Nov 2023 19:46

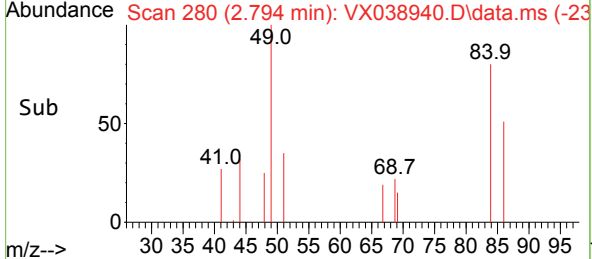
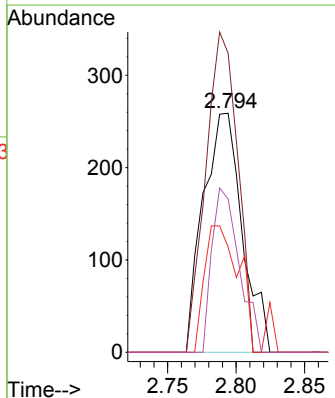
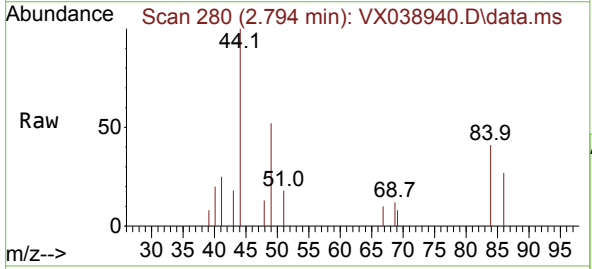
Instrument : MSVOA_X
 ClientSampleId :

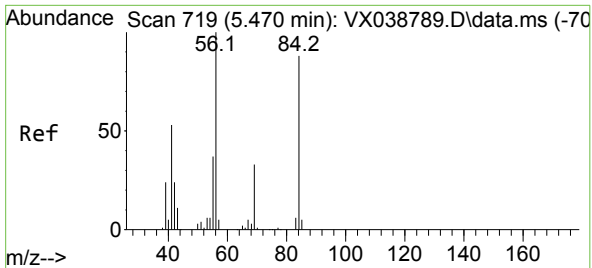
Tgt Ion: 43 Resp: 1520
 Ion Ratio Lower Upper
 43 100
 58 16.8 21.9 32.9#



#20
 Methylene Chloride
 Concen: 0.326 ug/l
 RT: 2.794 min Scan# 280
 Delta R.T. 0.006 min
 Lab File: VX038940.D
 Acq: 18 Nov 2023 19:46

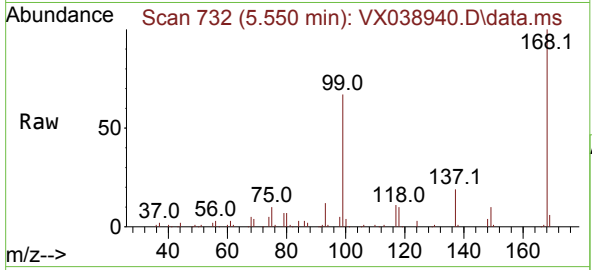
Tgt Ion: 84 Resp: 514
 Ion Ratio Lower Upper
 84 100
 49 125.1 103.6 155.4
 51 44.0 33.8 50.6
 86 64.1 49.4 74.0



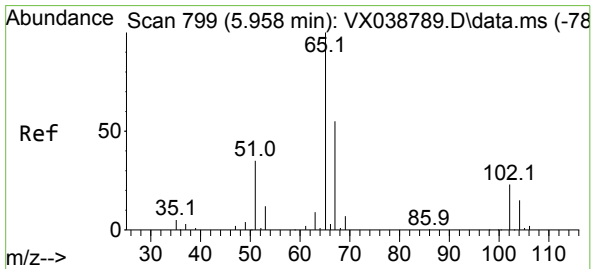
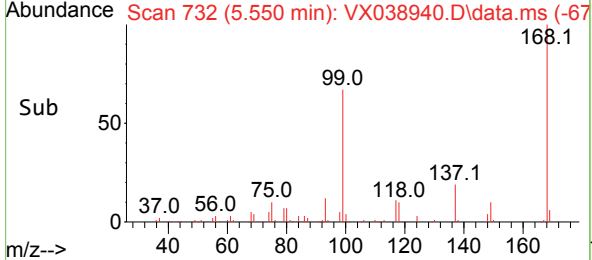
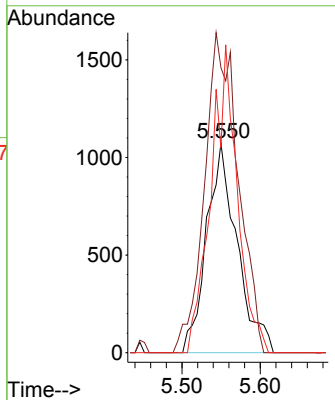


#31
 Cyclohexane
 Concen: 1.238 ug/l
 RT: 5.550 min Scan# 719
 Delta R.T. 0.079 min
 Lab File: VX038940.D
 Acq: 18 Nov 2023 19:46

Instrument :
 MSVOA_X
 ClientSampleId :

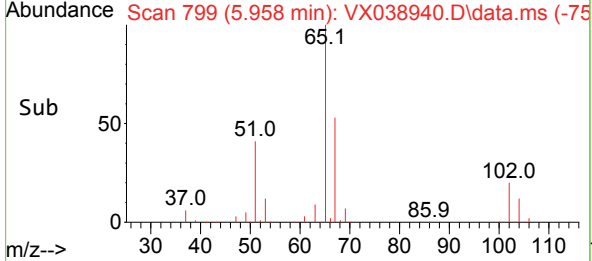
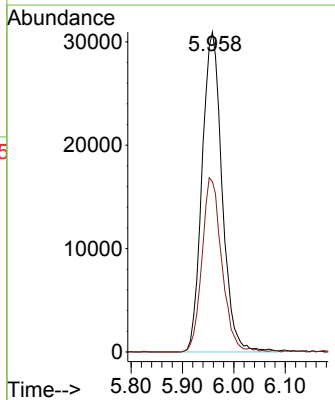
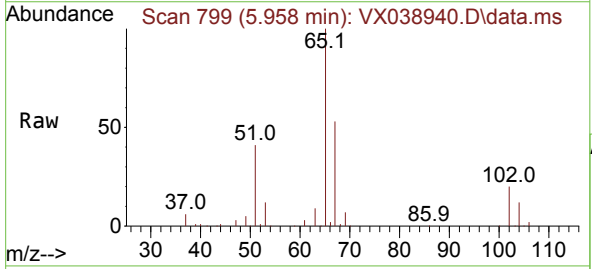


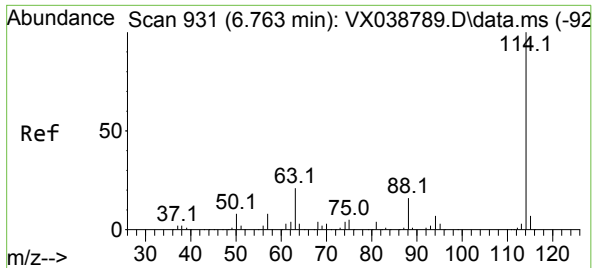
Tgt Ion: 56 Resp: 2905
 Ion Ratio Lower Upper
 56 100
 69 135.9 23.4 35.2#
 84 97.8 65.9 98.9



#33
 1,2-Dichloroethane-d4
 Concen: 50.891 ug/l
 RT: 5.958 min Scan# 799
 Delta R.T. -0.000 min
 Lab File: VX038940.D
 Acq: 18 Nov 2023 19:46

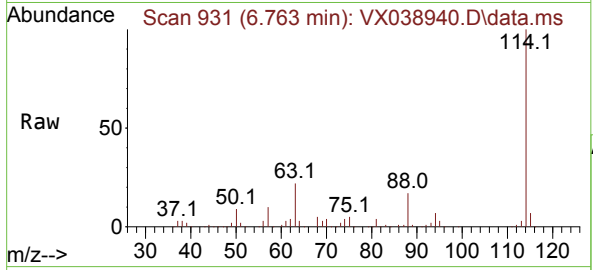
Tgt Ion: 65 Resp: 83619
 Ion Ratio Lower Upper
 65 100
 67 54.0 0.0 100.2





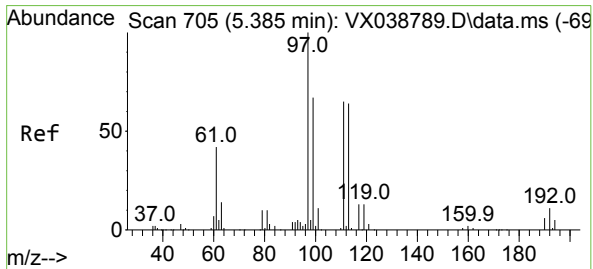
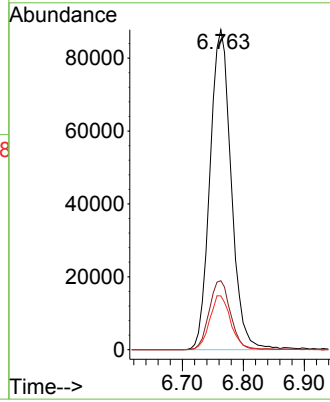
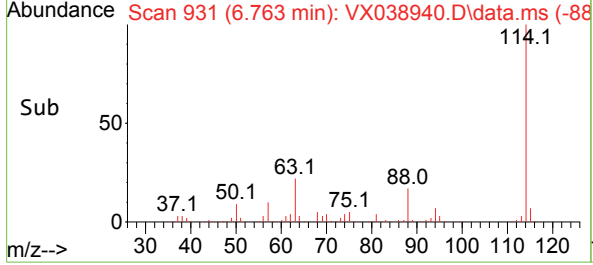
#34
 1,4-Difluorobenzene
 Concen: 50.000 ug/l
 RT: 6.763 min Scan# 91
 Delta R.T. -0.000 min
 Lab File: VX038940.D
 Acq: 18 Nov 2023 19:46

Instrument :
 MSVOA_X
 ClientSampleId :

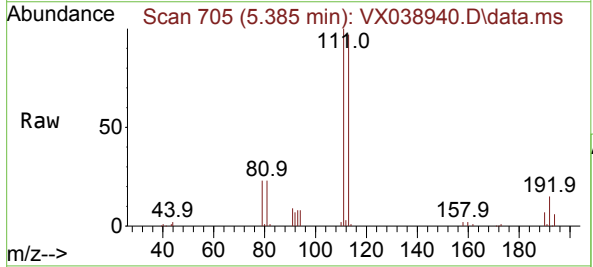


Tgt Ion:114 Resp: 212547

Ion	Ratio	Lower	Upper
114	100		
63	21.6	0.0	45.0
88	16.8	0.0	36.6

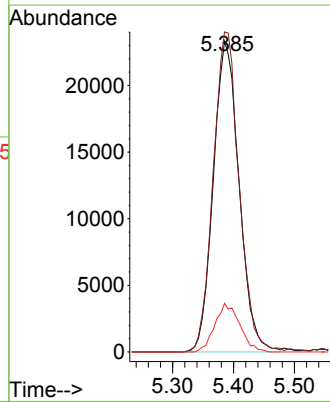
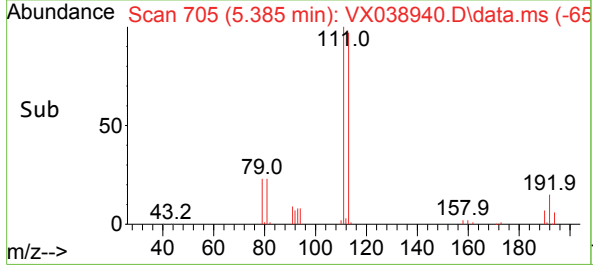


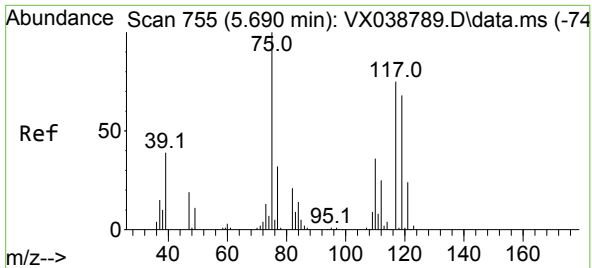
#35
 Dibromofluoromethane
 Concen: 44.636 ug/l
 RT: 5.385 min Scan# 705
 Delta R.T. -0.000 min
 Lab File: VX038940.D
 Acq: 18 Nov 2023 19:46



Tgt Ion:113 Resp: 68519

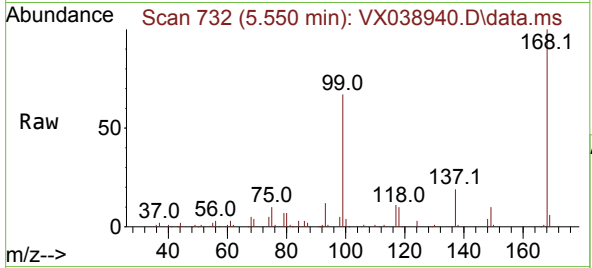
Ion	Ratio	Lower	Upper
113	100		
111	103.5	82.9	124.3
192	15.1	13.3	19.9



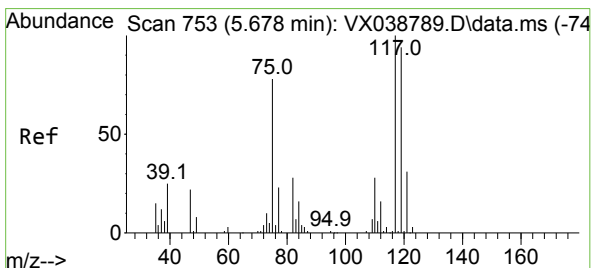
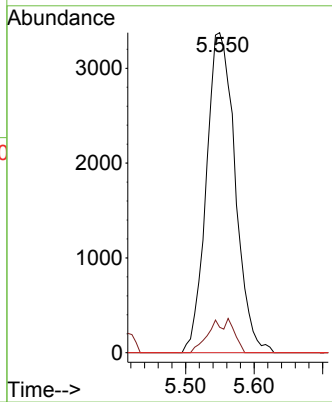
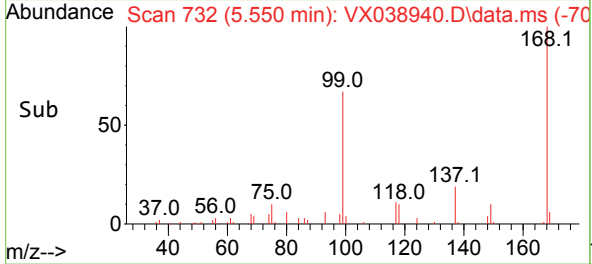


#36
 1,1-Dichloropropene
 Concen: 4.483 ug/l
 RT: 5.550 min Scan# 711
 Delta R.T. -0.140 min
 Lab File: VX038940.D
 Acq: 18 Nov 2023 19:46

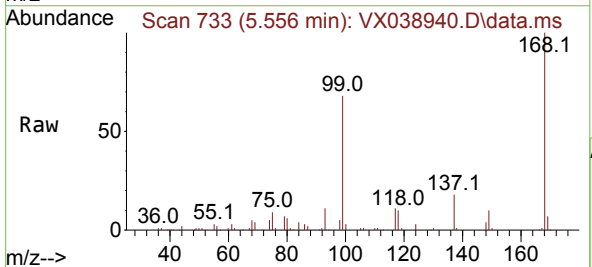
Instrument :
 MSVOA_X
 ClientSampled :



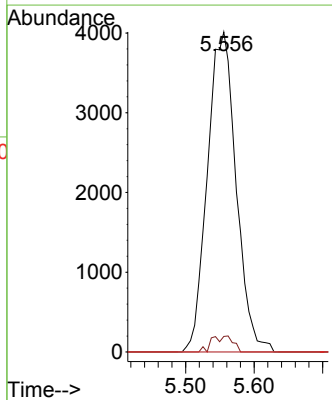
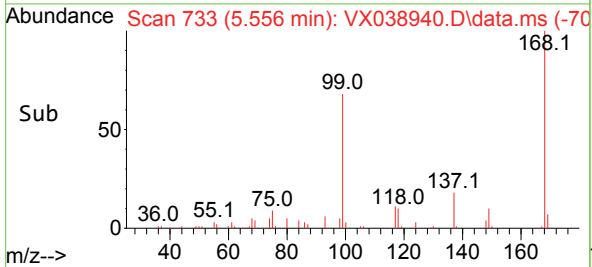
Tgt Ion: 75 Resp: 9862
 Ion Ratio Lower Upper
 75 100
 110 5.8 17.0 50.9#
 77 0.0 24.7 37.1#

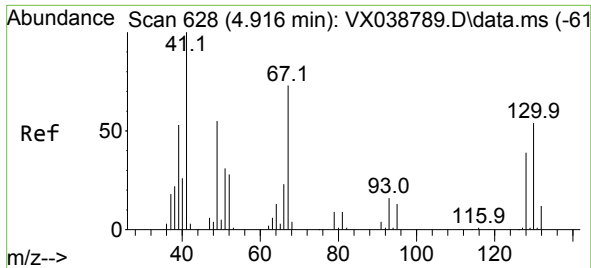


#38
 Carbon Tetrachloride
 Concen: 5.744 ug/l
 RT: 5.556 min Scan# 733
 Delta R.T. -0.122 min
 Lab File: VX038940.D
 Acq: 18 Nov 2023 19:46



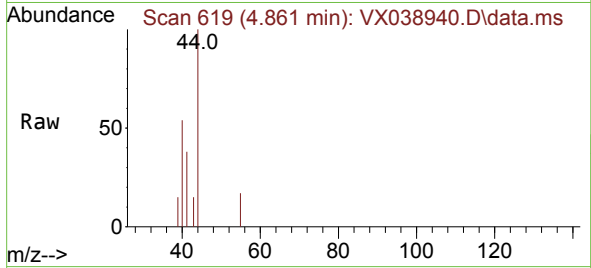
Tgt Ion: 117 Resp: 11680
 Ion Ratio Lower Upper
 117 100
 119 4.9 78.2 117.2#
 121 0.0 24.4 36.6#





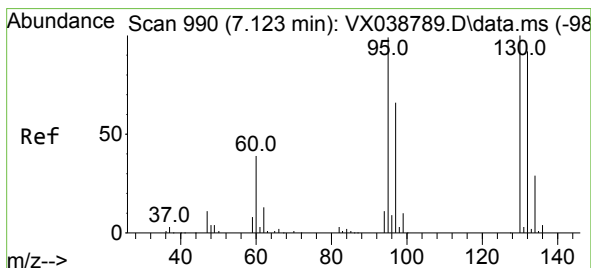
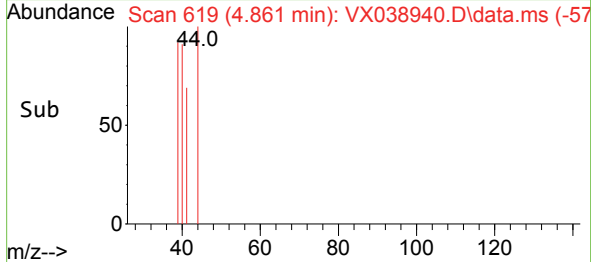
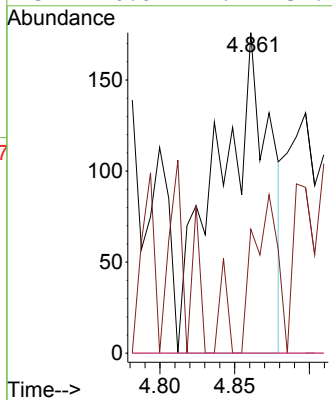
#41
 Methacrylonitrile
 Concen: 0.287 ug/l
 RT: 4.861 min Scan# 619
 Delta R.T. -0.055 min
 Lab File: VX038940.D
 Acq: 18 Nov 2023 19:46

Instrument : MSVOA_X
 ClientSampleId :



Tgt Ion: 41 Resp: 426

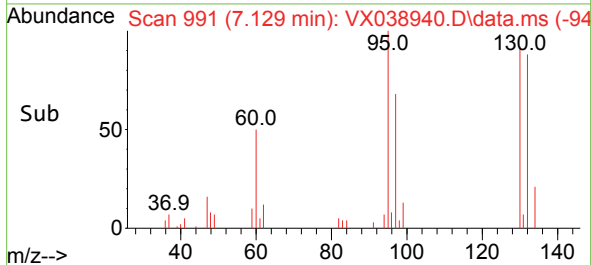
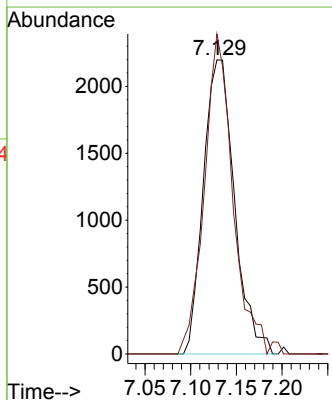
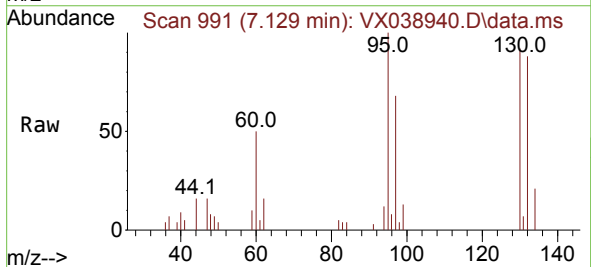
Ion	Ratio	Lower	Upper
41	100		
39	22.8	45.2	67.8#
67	0.0	52.6	78.8#
52	0.0	22.7	34.1#

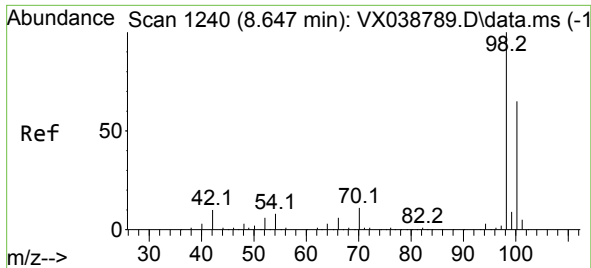


#44
 Trichloroethene
 Concen: 3.297 ug/l
 RT: 7.129 min Scan# 991
 Delta R.T. 0.006 min
 Lab File: VX038940.D
 Acq: 18 Nov 2023 19:46

Tgt Ion: 130 Resp: 5222

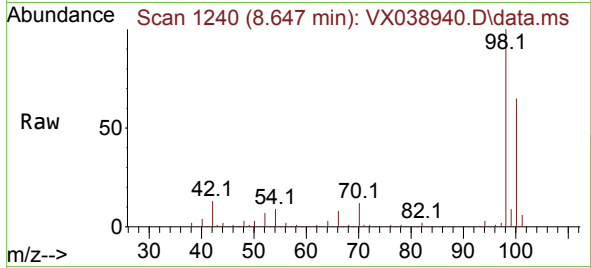
Ion	Ratio	Lower	Upper
130	100		
95	108.8	0.0	204.4



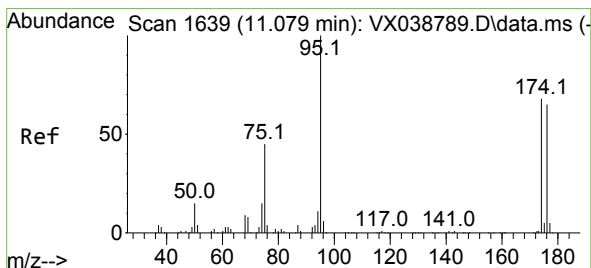
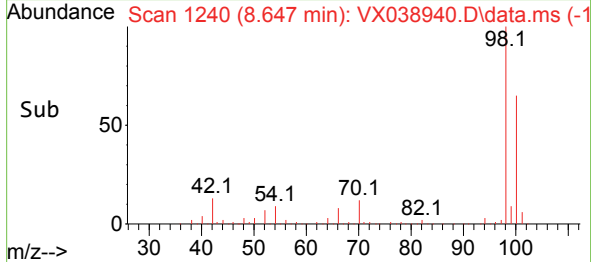
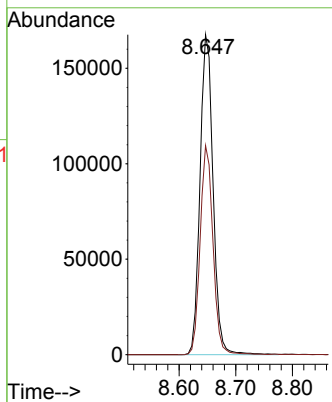


#50
 Toluene-d8
 Concen: 45.565 ug/l
 RT: 8.647 min Scan# 11
 Delta R.T. -0.000 min
 Lab File: VX038940.D
 Acq: 18 Nov 2023 19:46

Instrument :
 MSVOA_X
 ClientSampleId :

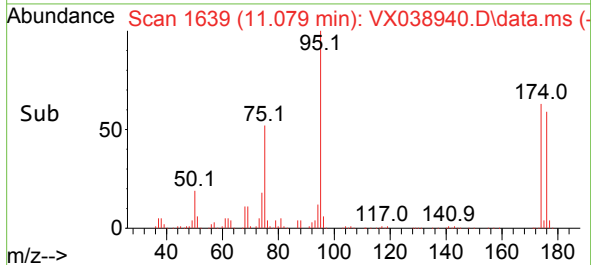
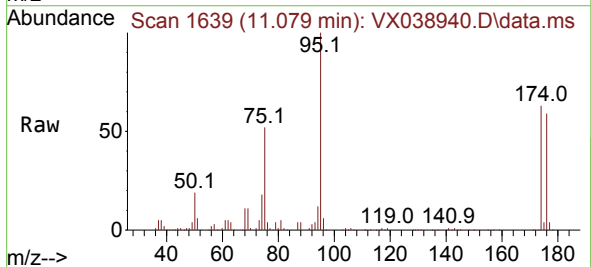
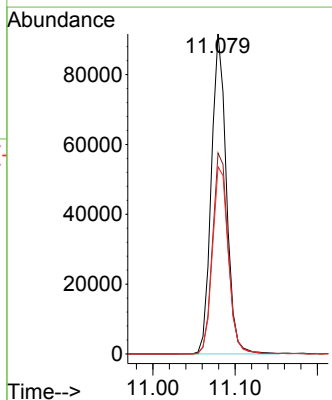


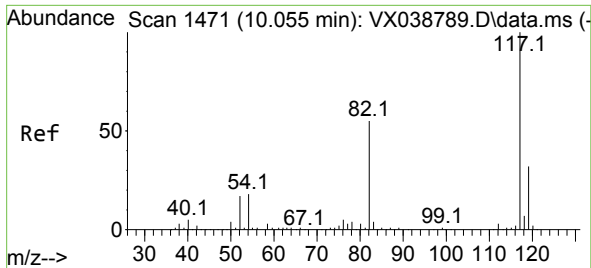
Tgt Ion: 98 Resp: 267613
 Ion Ratio Lower Upper
 98 100
 100 64.3 53.1 79.7



#62
 4-Bromofluorobenzene
 Concen: 49.459 ug/l
 RT: 11.079 min Scan# 1639
 Delta R.T. -0.000 min
 Lab File: VX038940.D
 Acq: 18 Nov 2023 19:46

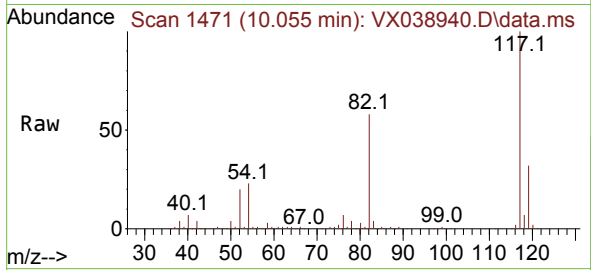
Tgt Ion: 95 Resp: 116283
 Ion Ratio Lower Upper
 95 100
 174 65.8 0.0 135.6
 176 61.9 0.0 131.0



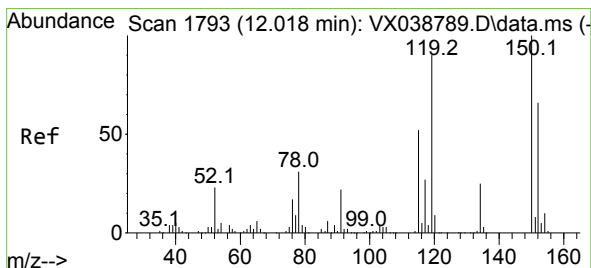
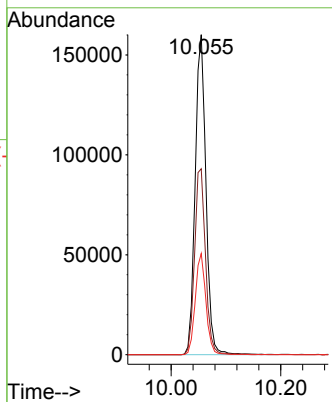
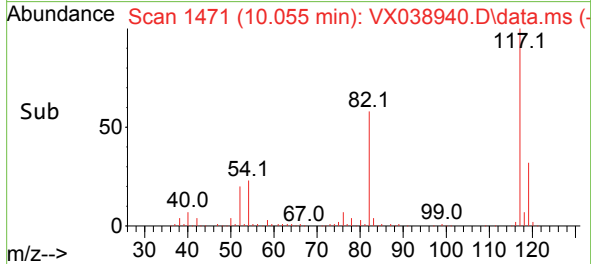


#63
 Chlorobenzene-d5
 Concen: 50.000 ug/l
 RT: 10.055 min Scan# 14
 Delta R.T. -0.000 min
 Lab File: VX038940.D
 Acq: 18 Nov 2023 19:46

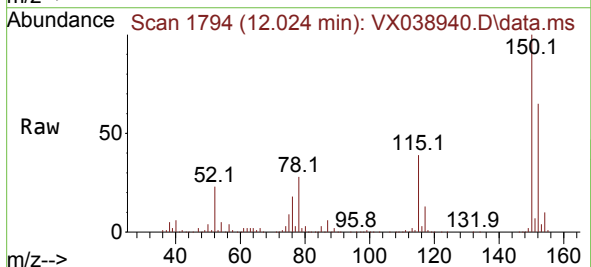
Instrument :
 MSVOA_X
 ClientSampleId :



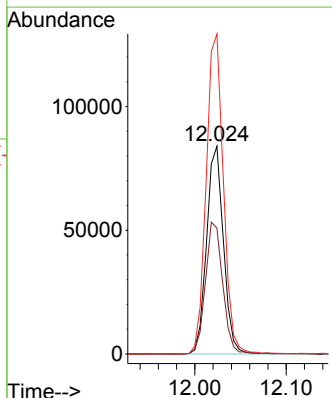
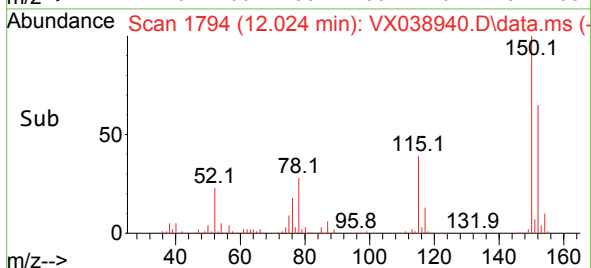
Tgt Ion:117 Resp: 219561
 Ion Ratio Lower Upper
 117 100
 82 58.1 46.2 69.4
 119 31.6 25.5 38.3

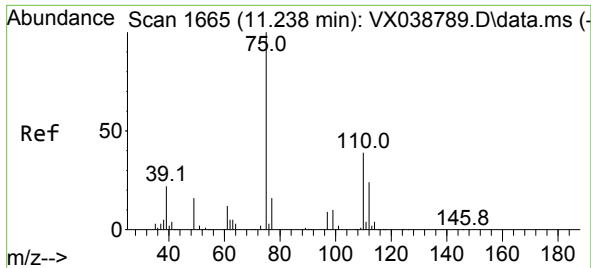


#72
 1,4-Dichlorobenzene-d4
 Concen: 50.000 ug/l
 RT: 12.024 min Scan# 1794
 Delta R.T. 0.006 min
 Lab File: VX038940.D
 Acq: 18 Nov 2023 19:46



Tgt Ion:152 Resp: 107381
 Ion Ratio Lower Upper
 152 100
 115 65.1 43.3 129.9
 150 157.1 0.0 345.0

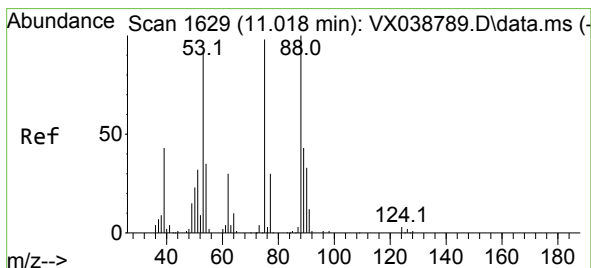
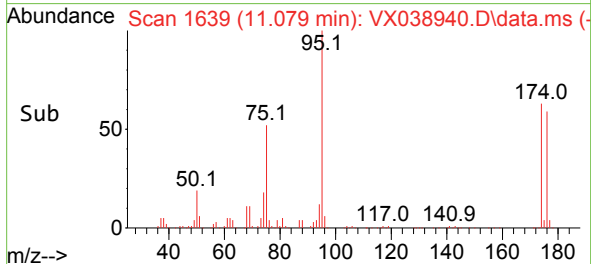
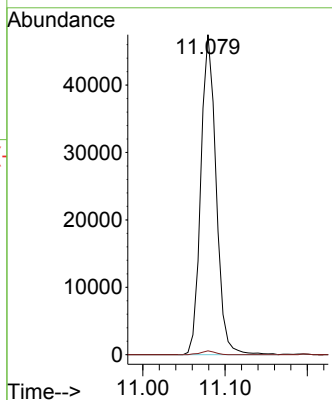
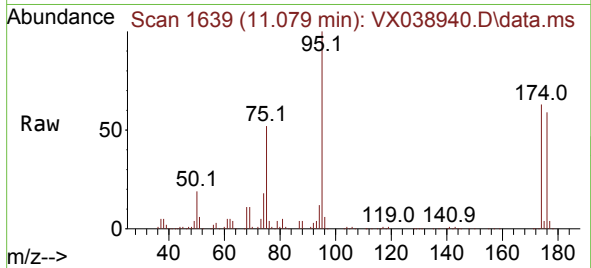




#76
 1,2,3-Trichloropropane
 Concen: 22.935 ug/l
 RT: 11.079 min Scan# 1639
 Delta R.T. -0.159 min
 Lab File: VX038940.D
 Acq: 18 Nov 2023 19:46

Instrument : MSVOA_X
 ClientSampleId :

Tgt Ion: 75 Resp: 61447
 Ion Ratio Lower Upper
 75 100
 77 1.1 19.1 57.5#



#81
 trans-1,4-Dichloro-2-butene
 Concen: 50.873 ug/l
 RT: 11.079 min Scan# 1639
 Delta R.T. 0.061 min
 Lab File: VX038940.D
 Acq: 18 Nov 2023 19:46

Tgt Ion: 75 Resp: 61447
 Ion Ratio Lower Upper
 75 100
 53 0.0 90.5 135.7#
 89 0.0 36.9 55.3#

